



NAYLAND^{WITH}WISSINGTON COMMUNITY TIMES

YOUR LOCAL MAGAZINE FOR NEWS AND VIEWS

CALENDAR PHOTOGRAPHIC COMPETITION



Many thanks to all who entered this year's calendar competition and helped provide a very colourful and interesting display for visitors on 6th May. Full details of the competition can be found on pages 36 & 37. Now that summer is here, don't forget to keep your cameras to hand to capture scenes for next year's competition.



NAYLAND 10K FUN RUN

The Community Council is delighted to be supporting this exciting event in the Nayland calendar of events.

With 650 runners already signed up we hope there will be plenty of local runners of all abilities taking part on 30th June – with 10k, 5k and 1k

runs there is something for everybody! However, you don't necessarily need to be an athlete to support this fantastic fundraising opportunity. If running isn't for you a team of volunteers and marshalls to help on the day (from 9am to 12pm) is needed - please contact Luke Rumbelow or Rachel Hitchcock if you can help. See page 14 for further details.



Are you passionate about your local area?

Would you like a new challenge?

Are you concerned about local community issues and your environment?

Do you enjoy working as part of a team?

The Parish Council needs YOU - see page 2

JUNE 2019

No: 179

SPECIAL INTEREST

Nayland Cinema: *'Loving Vincent', 'Vice' & 'The Keeper'*

Outing: Pashley Manor Garden

Nayland Open Gardens

Nayland Flower Show

Luncheon Club for Over 60s

HortSoc: Garden Party

Choir Summer Concert

School Summer Fete

Village Players Auditions

Nayland 10k

Outing: Audley End House

'Cedric Morris: Artist & Plantsman'

THIS ISSUE

Players: *Cash On Delivery*

Calendar Photo Competition

Annual Parish Assembly

REGULARS

Community Council News

Parish Council Notes

Village Hall Meetings

Society News

Church Services

Garden Notes

Village History

PLUS

Dates for your Diary

Local Information

Contact Details

(on back pages)

View the CT in colour on: www.naylandcommunitycouncil.org.uk

NAYLAND WITH WISSINGTON PARISH COUNCIL

Extract of Minutes for Meeting: 10th April 2019

(Minutes will be available on PC notice board in the High Street or www.naylandandwiston.net after the next meeting)

PUBLIC FORUM

The meeting heard about a private venture of a Boot Camp proposed for the Recreation Ground with the permission of the Parish Council. The residents proposing this venture explained their experience and why this would be beneficial for the participants including outside training bringing about improved fitness in a social environment. No music is proposed, however, the sound of the coaches' voices may be heard. Numbers will be limited but a real family atmosphere was anticipated - parents with buggies and grandparents with children in the play park.

COUNTY COUNCIL REPORT

County Cllr James Finch attended and reported on changes to the opening hours of Recycling Centres. He has called for a full review in relation to Wiston traffic. He has asked for the speed restrictor sign to be re-programmed near the A134 junction to come on at a lower speed than at present. Speed roundels will be painted on the roads shortly as a result of the speed reductions.

PLANNING

Babergh DC have approved discharge of condition 4 (details of repairs) at **8 High Street** [DC/19/00806].

Parish councillors considered a re-consultation for **8 Mill Street** [DC/18/05465] for erection of dwelling and conversion of out-building into annex between meetings. The response issued was as follows: *the Parish Council have no objection to these revised plans. We approve of the reduction in the height of the roof to the main building and the partial retention of the old brick wall on the street front. We would however recommend that the following conditions are imposed: 1. That the annexe should not be let or sold separately from the main house. 2. That the bricks, bonding material and colours of the new building are carefully selected to blend in with the surrounding houses, preferably reclaimed red bricks or a muted rendered finish. The reduction in roof height may alleviate some of the concerns of residents at No 4/6 Mill St, about loss of light & amenity, but we repeat our previous request for the officers to visit the site, to assess the visual impact of the proposed building on their south boundary. The Parish Council's additional comments (13/03/19) on the*

previous consultation remain valid.

Councillors had no objections to an application at **11 Gravel Hill** [DC/19/01301] for insertion of electric gate following removal of existing wooden gate.

After discussion regarding **5 High Street** [DC/19/01491/2] for replacement windows, ground floor doors and new boundary wall including Listed Building a response was agreed as follows: *Please note the Parish Council do not object in principle as long as there is a condition requiring traditionally designed windows. We note no pre-application advice was sought and would therefore stress the need to involve the Heritage Officer.*

RECREATION AND OPEN SPACES

Following discussion the Parish Council concluded that they were in favour of trialling the Boot Camp idea subject to the legalities of the use of the Playing Field being checked as this is a commercial venture for adults. The timing of sessions should ensure children's play is prioritised. Parking during the trial should be monitored and any comments from the neighbours to the Playing Field taken on board. Evidence of Public Liability Insurance will be required and a letter of intent drawn up.

On another matter, a site meeting will be scheduled for 23rd May with a Diocesan Surveyor in relation to the Burial Ground driveway. The Chairman and G Battye will work on the proposed signage at the Playground. Some logs have been taken from Caley Green. This has been reported. Pop's Piece still has tyre tracks. It was agreed to seek advice from our Grounds Maintenance Contractors in this regard.

HIGHWAYS

Various pot-holes have been marked for filling in High Street and Church Lane. The Chairman was able to discuss with the contractor upon their visit. The Community Litter Pick was a success again, all contributors were thanked. They concentrated on footpaths and cleared 12 bags of rubbish in about an hour. Some of the equipment used is in need of replacement so it was agreed to make enquiries about how to go about this. The Chairman wanted to raise the idea of starting up Lorry Watch at the Annual Parish Assembly. All agreed.

STREET LIGHTING

The Chairman is still trying to arrange an appointment with the owners of the property in Court Street where the removal of the street light has been requested. The power and maintenance for last year has been invoiced and checked and it is one of the listed payments for this meeting.

ALLOTMENTS

It was agreed to hold the Annual Meeting of Allotment Holders after the elections. As there are people on the waiting list, members agreed those who do not pay their rent within a further month should vacate their allotment.

VILLAGE HALL

Tricia Fuller out-lined the various meetings and actions she was taking towards the grants for the Village Hall Roof. The Committee discussed the request by the PCC to locate a hut on the grounds of the Village Hall and they didn't think there was a suitable location. The Parish Council supported that assessment and will write to the PCC accordingly.

IN BRIEF

The Environment Agency have accepted responsibility for the management of the Mill Stream. The grid is blocked currently and will need reporting.

The Footpath Warden is working with Fen holders in relation to a new stile for Candy Lane. Damage has been reported to the bridge over the flood channel.

Speakers at the annual Parish Assembly on 29th April will be Carroll Reeve, the Lavenham Parish Council Chairman on the subject of Neighbourhood Planning. Other speakers will be from Stoke by Nayland and the Lady Anne Windsor Trust Charity. J Finch will cover Highways.

NAYLAND WITH WISSINGTON PARISH COUNCIL

Do you live or work in Nayland or Wiston?

Would you like a new challenge?

Are you concerned about the local community
issues and environment?

Do you enjoy working as part of a team?

Would YOU be interested in becoming a co-opted Councillor?

The recent Parish Council elections were uncontested. There are now five elected councillors and four vacancies. Please apply by letter or email before 7th June 2019 to let us know what qualities and skills you can offer the community. You can find out more about the responsibilities of a Parish Council by speaking to a Councillor or by contacting the Parish Clerk, Mrs. Debbie Hattrell, at:

pc@naylandwithwissington.suffolk.gov.uk

12 Hitchcock Place, Sudbury CO10 1NN

01787 378649

Notes on the annual meeting : 8th May 2019

(Minutes will be available on PC notice board in the High Street or www.naylandandwiston.net after the next meeting)

PUBLIC FORUM

Sally Dalton of Friends of Caley Green said that they had made new temporary 'No Parking' signs for the Green and will put them out at weekends from the end of May.

Mike Hunter expressed thanks for the work of the four retiring councillors.

DISTRICT COUNCIL

Melanie Barrett reported that she had been returned with a small majority and that limited local issues were raised on the doorstep; most comments were on national issues.

PARISH COUNCILLORS

Mary George was elected Chair. Mary accepted on condition that it was until October. Mary will remain as a councillor from then on.

Councillors discussed allocation of responsibilities and the shortfall in the number of members. Four people could be co-opted before June when vacancies will be formally advertised.

PLANNING

Babergh DC have approved discharge of conditions regarding surface water prevention drainage at **The Bungalow, Harpers Hill** [DC/19/00947] and listed building consent at **Millstone Cottage, Fen Street** [DC/19/00705] for formation of opening in garden wall to provide access with step from terrace area to garden area beyond and erection of a new painted timber gate and posts within new opening.

Parish Councillors had no objection to the felling of a Robinia tree at **Mallards, 88 Bear Street** [DC/19/01953] and at **3 Ash Rise** [DC/19/01796] for the erection of rear single storey extension and side porch extension (following demolition of existing single storey extension and garage), removal of front window and reinstatement of garage door.

Parish councillors will consider the following applications before the next meeting: at **Wickham, 65 Bear Street** to fell a tree (no other details available online) and at **25 Stoke Road** [DC/19/02118] for conversion of existing garage into a bedroom; construction of willow fencing; creation of new gravel drive.

RECREATION AND OPEN SPACES

Gerry Battye reported that repairs at Fairfield Recreation Ground were done now but signage and the state of the driveway were an issue. Councillors are to meet with the Diocese to discuss the driveway on 23 May.

The new Boot Camp fitness venture has Public Liability Insurance and is operating on a trial basis.

COME AND JOIN OUR FRIENDLY COMMUNITY COUNCIL COMMITTEE

We are seeking some new volunteers to come and join the Community Council Committee to bring new ideas and support with popular village events, such as Bonfire Night, the Christmas Fayre and the Nayland 10k.

It really isn't an arduous job - we meet every couple of months, provide a forum for all the village societies to come together and share what they are up to, fund-raise to support village activities and societies and organise some of the key events in the village calendar. Nayland is such an active and friendly village and being involved in the Community Council is a great way to be part of it.

Please don't be shy. If you think you can help or would like to find out more please contact:

Rachel Hitchcock
01206 263169 or 07788 954309
rachel_hitchcock@hotmail.com

An advert for Bures Open Gardens has appeared on Caley Green by the A134/Bear Street junction. The PC will advise those responsible that there's a procedure to follow through the Parish Council.

HIGHWAYS

Birch Street will be closed between 9am and 3.30pm from 20th May for 5 days due to works to investigate the drains.

Councillors had met with officers from Suffolk CC Highways regarding damage to verges in Wiston; Highways view was that damage to verges was the same 'all over Suffolk' though funds might be available to tidy up.

Councillors were unimpressed with the new road surface on the A134, through Gt Horkesley.

SCHOOL TRANSPORT CHANGES

Changes to Suffolk CC's Schools Transport policy mean that they will fund transport only to a child's geographically nearest school: Hadleigh for the eastern part of Nayland and Thomas Gainsborough School (TGS) for those living in the western part and Wiston. The change over starts somewhere in Bear Street. While those pupils already at TGS and living in the 'East side' would not have to pay for their transport unless they move house, councillors discussed issues including parents of east side new to TGS children having to pay for bus transport. As there is no public bus to Hadleigh, there is no clear guidance about how a child is supposed to get there other than SCC saying parents will have to 'make their own arrangements'. Also, SCC will no longer pay for transport for children to Nayland Primary from Leavenheath above a certain age as they consider under three miles to be walkable. The PC will ask James Finch to attend the next PC meeting to answer questions.

MATTERS ARISING FROM THE PARISH ASSEMBLY

Though a bigger turn out than last year, there were only 36 members of the public present.

Local Development Plan

Councillors had appreciated the talks given by councillors Carol Reed from Lavenham and Isabel Reece from Stoke by Nayland on the importance of communities setting up a LDP. Lavenham is already building new homes in their parish and Stoke's LDP is underway with much community consultation.

Gerry Battye made the point that at present there is no LDP to balance private development; if there's a plan in place, developers will come and talk rather than simply submit plans. Parish Clerk Debbie Hattrell observed that while the PC can support and grants are available to set up a LDP, it must be run by the community. Ned Cartwright said that 'buy-in' from the parish was crucial. Councillors agreed that the core issue was identifying where housing development could happen. Mary George mentioned the possibility of having an 'Open Day' to inspire community interest and that if the LDP included housing, it must benefit local people.

Lavenham had benefited from being gifted Suffolk CC land and the service of retired planning officers. Nearby parishes establishing LDPs include Newton Green (40 volunteers) and Assington.

Recruiting more Parish Councillors

Ned Cartwright would be happy to create a flyer inviting applications to become a Parish Councillor. Mary George would investigate whether these could be available at the Church Fete.

IN BRIEF

Gerry Battye said the PC should consider having a lively Facebook page. This might be something a new councillor might take on.

The gate accessing the allotments was found to be left open recently but it should be kept locked.

Tricia Fuller is busy searching for further grants to help with the Village Hall Roof fund. Issues regarding the leasehold terms of the hall have a bearing on grants available from Babergh DC and are under discussion.

Stour Valley Landscapes

*Gardening
Fencing
Tree & Hedge work
Landscaping
Digger work
Handyman jobs*


For a local, friendly & reliable service:

**Tel: 01206 263629
Mob: 07801 430751**


**NEWTONS FARM
INDOOR TENNIS COURT**

Wissington, near Nayland

**PAY AND PLAY
NO MEMBERSHIP
BOOK ONLINE**



www.indoortenniscourt.co.uk
01206 262453

Learn to drive 
with your local driving school

Rob Austin D.O.T A.D.I.

Fully qualified
12 years experience
Dual controlled car
Learn at your own pace
1st 2 hour lesson £25
£19 per hour there after

For more information or to book lessons call Rob on:
**01206 262106
or: 07946 085338**

TOWN PRINTS
**General
Picture Framing**

Also a selection of
antique engravings
of Colchester and District.

Foster Jones
Longwood Cottage,
Fen Street, Nayland,
CO6 4HT

Tel: 01206 262483

 **Fix-A-Lock**
Locksmith - available 24/7

- **Emergency LOCKSMITH -**
Wooden and UPVC doors
- All window & door repairs -
handles/hinges/mechanisms/etc
- Replacement sealed units
- UPVC window & door specialist
- UPVC window & door installations
- CRB checked

 **Ted Blanchette**
07836 551 032
tedblanchette@tiscali.co.uk

LOWER DAIRY FARM
BUY DIRECT FROM THE
FARM SHOP



**GRASS FED BEEF
HORKESLEY PORK
FREE RANGE EGGS
JAMS & PRESERVES
NEARLY WILD CAMPSITE**

Water Lane - Lt Horkesley - CO6 4JS
T: 01206 262314   
www.lowerdairyfarm.co.uk


**SUPER CLEAN
Carpet Cleaners**
www.supercleancarpetcleaners.co.uk

Fresh, clean & healthy
carpets and upholstery...
Just a phone call away!

Professional Service,
Super Results & Great Prices!

**Call
Today
07376
800 111**



Yoga & Marma Therapy
 **for anxiety and
post traumatic
stress disorder.**

Lucia's Light offers respite through
1:1 yoga and acupressure touch
therapy for PTSD and anxiety
disorders. Neuroscience based
approaches that calm the nervous
system and change the brain.

For more information visit
www.luciaslight.org
or call 01206 272453.
Email info@luciaslight.org

DS Clarke
Building Services

For professional - high quality work

General building work including:-
Extensions - Renovations - Brickwork
Landscaping - Roofing - Kitchens - Tiling
Plastering - Carpentry - Decorating etc

For a free, no obligation estimate,
contact David Clarke on:

**Tel: 01787 227943
Mb: 07867 851 137**
dsclarkebuilding@yahoo.co.uk
7 Claypits Ave, Bures, CO8 5DA

AERIAL VIEW

TV, FM & DAB Aerials
Freeview, Freesat & Sky
Motorised Satellite,
Smart TV & Wi-Fi set ups,
Repairs, Poor Reception
& Upgrades
Extra Points, Magic Eyes
& TV Wall Mounting

Please call for other services

01787 311057
www.aerial-installers

HANDYMAN
based in Nayland

**Gardening
Decorating
DIY
Odd Jobs**

References available

**Call Stuart Mosley
07760-236937
01206-262981**

**JOHN
TOKELY**
Painter &
Decorator

*Interior & Exterior
Work Undertaken
Free Estimates*

*No Job too large
or too small*



9 Nayland Road, Colchester,
Essex CO4 5EG
Telephone: 01206 845665
Mobile: 07976 848310

**TRG PEST
CONTROL**

Rabbits, Moles, Rats,
Mice, Wasps, etc
Efficient and
Economical Service

For Further
information call
Terry Gowing
Tel: 01206 322776
Mobile: 07990 954192

**NORTH
ESSEX
WINDOW
CLEANING**

**Local and Professional
Window Cleaning Service**

Full Window Cleaning
including doors, cills and frames
Cladding • Soffits • Fascia boards
Gutter cleans/clears
Conservatory cleans

Call Mick on 07912 660956
for a no obligation quote

**TO ADVERTISE
IN THE
COMMUNITY TIMES**

Contact Editor: Lorraine Brooks
Tel: 262807
E-mail: lorraine.nayland@btinternet.com
Advertising tariffs are listed on back cover

JP Services

Fencing - Horticultural Woodwork - Paving
Sleepers/Landscape timber

07970 559251 - www.jpsservices.co

Services:

Sheds & greenhouses erected and repaired, bases laid
Raised beds ■ Patios and paving ■ Artificial grass installed
Traditional window boxes & planters
Rustic structures: rose arches, pergolas etc
Fencing, hedge laying ■ Gardens cleared
NPTC chainsaw certification held
Waste removed, EA registered waste carrier
Flat pack furniture constructed ■ And much more

Sales: visit us at www.jp-services.info

Sleepers/landscape timber ■ Oak tubs/barrels
Steel barrels, ideal for storage, incinerators etc

COMPUTER DOCTOR CALL OUT

THE TIME THAT SUITS YOU!
COMPUTER MAINTENANCE & UPGRADES

- PC Maintenance
- Device Installation
- Software Installation
- Upgrading Operating Systems
- Improve Performance
- Internet & Mail Configuration
- Virus Detection and Removal



Contact: 07989 405791 (Nayland based)

Country Cars Private Hire

YOUR LOCAL TAXI SERVICE

Local & Long Distance

Airports - Theatre Trips

Weddings - Hospitals



Polstead Based

Personal & Professional Service

NVQ Trained

Contact Dave Howard 07767 076976

Mike Freeman's Window Cleaning Residential and Commercial



For an honest, fully insured, experienced window cleaning service, please call
Mike: 01206 503814
or **07590 396781**

Facias, Gutters, Frames, Cladding - all undertaken

13 Flanders Field, Colchester CO2 8BX

JMAC INTERIORS

Specialist Painters & Decorators

Est. 1997

- ✎ All Interior and Exterior Work Undertaken
- ✎ Specialist in Period & Listed Properties
- ✎ Wallpaper Hanging to the Highest Standards
- ✎ Restoration of Ornate Cornices & Ceiling Roses
- ✎ References Available
- ✎ Fully Insured

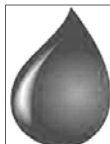


Contact: Jeff Macdonald

Tel: 07778 031505 - 01787 224674

Email: jmacinteriors@aol.com

www.jmac-interiors.co.uk



STOURVALLEY

HEATING & DOMESTIC SERVICES LTD

- OIL CENTRAL HEATING INSTALLATION & MAINTENANCE
- COMMISSIONING
- HOT WATER STORAGE INSTALLATION
- UNDERFLOOR HEATING INSTALLATION
- WATER SOFTENER INSTALLATION
- FULL BATHROOM DESIGN & INSTALLATION
- DOMESTIC PLUMBING SERVICES

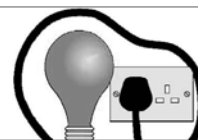
Local experienced established registered installer
For advice or a free estimate call MARK WARREN
on Mobile 07968 586613



A.S. Ironing Services

All your ironing needs
Occasional or weekly
Free collection and delivery
Fully insured
Established 2004

Tel: 01787 228036 after 4pm
or Mob: 07790 344090
Annette Southernwood



ELECTRICAL DGS

ELECTRICAL CONTRACTORS

Alterations - Rewires - Maintenance - Inspection & Testing

City & Guilds
Qualified

Local Electrician
Call Dan on 07500 038322
or Leavenheath 01206 262956
dan@electrical-dgs.co.uk



Free quotations available

COMMUNITY COUNCIL REPORT

Meeting: 8th May 2019 Chair: Rachel Hitchcock 263169

www.naylandcommunitycouncil.org.uk

Rachel Hitchcock welcomed members to the meeting.

MATTERS ARISING:

Executive Committee: Rachel Hitchcock welcomed Jo Metson, as an Executive member, to the meeting and said further members would be welcome. More members would bring new ideas and thoughts to the CC. Membership is not arduous; meetings are held just six times a year. It is an enjoyable friendly village committee and an ideal way for those new to the village to become involved and meet new friends. Contact Rachel 263169 rachel_hitchcock@hotmail.com if you would like to know more.

Current members confirmed their status as group members: Rachel Hitchcock – Messy Church, Iain Wright – Village Hall, Jo Metson – HSA, John Parsonson – Art Group.

Fundraising Activities & Events: Ideas for fund raising projects to benefit the CC are always welcome

Community Defibrillator: There are two defibrillators in Nayland; located at the Village Hall and at the Fire Station. Rachel Hitchcock said a training session with Community Heartbeat Trust will be held on 15th May, 7.30pm at Nayland Primary School for those that could not attend the last session. Although training is not required to use a defibrillator these training sessions help raise awareness and give confidence to potential users.

Nayland 10k Fun Run: Rachel Hitchcock reported 650 entries so far, this year they are aiming for 900 runners for the 10k, 5k and 1k distances. Entries and further details on www.nayland10k.co.uk. The charity to benefit from the event this year will be SESAW, the animal rescue centre in Leavenheath. Donations will also be made to NwW Community Council, NwW Conservation Society, Nayland Primary School and Charley Watkins Foundation. CoHoc, Colchester Hospitals Charity benefitted from the last two events.

It was much appreciated that CC provided so many volunteers in the past and will welcome CC volunteers for this year's event. Anyone marshalling will be entitled to free entry to the event for a friend or relative running the 10k, 5k or 1k distances. Please contact Luke 07598 821663 rumbelow_2000@yahoo.co.uk or Rachel 263169 rachel_hitchcock@hotmail.com if you can help.

Village Hall Garden: The spring gardening morning was held on 16th March. The strong winds of Storm Gareth did not deter the happy band of volunteers. More hands make light work so volunteers to help are always welcome.

TREASURER'S REPORT: Maggie Ryan had sent her report. **Breakdown of profits:** Quiz £295.00, Community Times £368.50. **Current Position:** The accounts show reserves of £23,624.49, represented by Deposit a/c monies £10,639.38, Current a/c monies £12,917.33, Cash in hand £67.78. We hold £418.50 for the Services Fund. **Unencumbered assets are therefore £23,205.99.**

GRANTS & DONATIONS:

Village Hall Roof: Following a presentation on the VH roof replacement proposal during the Village Hall AGM and further discussion by the CC Exec it was agreed to support their grant application for £10,000 towards the cost of the replacement roof. The meeting was reminded that the CC had agreed at their AGM to support the use of the VH endowment fund for the roof. The construction costs are estimated at £225,000.

Lizzie's Fund in association with The Brain Tumour Charity: Thanks had been received for a grant of £195 to cover hire of the village hall as part of a 50km endurance walk fundraiser for this charity. Eighteen local residents will be walking 50k, starting and finishing in Nayland; they will be joined by a considerable number of family and friends at the concluding fundraiser at the village hall.

Community Times & Websites: Lorraine Brooks gave a reminder for photos of village activities and things seen in the parish for See It Snap It, etc. She reminded societies to look at the events calendar on the Nayland & Wiston website when planning events to avoid clashes with other village activities.

Village Calendar: Lorraine Brooks was pleased to say Wendy Sparrow has continued and Sally Dalton and Iris Sebba had joined the Calendar Team. We are grateful to Pat Bray who helped gain sponsorship.

The calendar photograph competition on 6th May had been successful and just over 60 visitors enjoyed choosing their favourite 12 photos, although it was not an easy task. The CC and CT history and CT archives were on display; the CT has its 30th anniversary this year.

This year's calendar will not include historic photos and captions, therefore production will take less time; it was agreed to have the calendars on sale at the Nayland 10k and available in shops for summer tourists.

Print costs, of £636 inc VAT, were approved.

We would be grateful to anyone who can help with selling the calendars; at local events or venues/groups they are involved with.

FORTHCOMING ACTIVITIES

2019 Dates: Nayland 10K Fun Run Sunday 30th June, Fireworks Tuesday 5th November, Christmas Fayre Saturday 7th December. The next Fun Quiz will be held in February 2020.

SOCIETY REPORTS

Art Group: Colin Ramsell said under the guidance of their two visiting tutors they have been painting a myriad of subjects, from ballerinas, elephants, a male life model to Church Passage in Nayland. There is currently one vacancy to join the group which meets on Wednesday afternoons in the Church Hall. They are planning a visit to Munnings Museum for the 'Behind The Lines' exhibition of his work when appointed as a war artist in France for the Canadian Cavalry Brigade and later for the Canadian Forestry Corps during 1918.

HortSoc: Trevor Smy said the Spring Show and a talk on 'The History & Development of Perrywood Nursery' during March had been successful and their AGM and Fun Quiz in April was well attended. The Morning Market, selling plants and cakes takes place on 11th May. They are taking bookings for a June outing to *Pashley Manor Garden*.

Women's Institute: Wendy Sparrow said in March the Nayland branch celebrated their 62nd Anniversary with a lunch party at The Saracens Head at Newton Green and in April Simon Gallup spoke on 'Unknown Constable Country'. On 21st May we will have our Annual Meeting and Resolutions and on 17th June Andy Malcomb from the Fishermen's Mission will talk on the subject 'The True Price of Fish and Chips'.

Book Club: Wendy Sparrow said they recently read 'This Is Going To Hurt' by Adam Kay; it is a humorous book with a very sobering message about his years spent as a junior doctor; Adam left the Health Service and is now a stand-up comedian. Their current book is 'Dreams From My Father' by Barack Obama.

Friends of Caley Green: They have produced new temporary 'No Parking' signs for the Green and will start putting them out towards the end of May.

Parish Council: There are currently 4 vacancies on the Council. Councillors are: Gerry Battye, Ned Cartwright, Laura Erith, Tricia Fuller and Mary George. Attendance at CC meetings is likely to be rotated between them until they are back to full complement. Birch Street will be closed to traffic for five days between 9am and 3pm from 20th May to sort out the drainage from the bottom of Gravel Hill to Mill Street and the culvert with the defunct millstream along the back of Birch Street gardens from the Mill Street to Socket Alley.

Nayland with Wissington 2020 Calendar

Fantastic new views of the parish
Still priced at just £5 !
They make ideal gifts

Calendars will be on sale from:

30th June at Nayland 10k Fun Run
4th August at Nayland Flower Show
and at the Post Office
and Forget Me Not



Community Council report continued.....

Conservation Society: John Partridge said the May Bank Holiday walk, this year around Polstead, had been interesting and a visit to Euston Hall, a delightful house with a wealth of antiques, was most enjoyable despite the wet weather.

Twenty one gardens are expected to be included in Open Gardens on 9th June and on 24th June Sarah Cook will be talking on Cedric Morris, a local but internationally renowned artist and plantsman.

Royal British Legion: John Partridge said they had a very interesting visit to Stow Marie, a WW1 military aviation museum based at an aerodrome in Maldon. Originally opened in 1916 as home to B Flight of No 37(HD) Squadron, Royal Flying Corps, the aerodrome saw the birth of the Air Defence of Great Britain in response to the first raids by Zeppelins and Gotha bombers on London and the South East. Their next meeting will be on 13th May when Dick Strover will give a talk about his father's experiences and letters home as a Royal Flying Corps pilot and POW. All are welcome.

Village Players: Bryan Smith said 'Cash On Delivery' went very well and received excellent feedback. The set had been complicated to construct and had some teething problems but was all part of the challenge. Jim Bond will be directing the next production which will be decided upon soon.

Baby & Toddler Group: The group will be spreading the word/advertising for a new 'management' team to run the group from September, as Anna, Helen and Kate will be stepping down at the end of the summer term.

Village Hall: Iain Wright thanked the CC for awarding a £10,000 grant and agreeing to the release of the Endowment Funds. Tricia Fuller is working hard on obtaining grants towards the roof replacement and they had a positive meeting with Babergh DC. General maintenance continues including appliances; the cooker may need repair/replacement.

Village Cinema: Recent films have been well attended. This Friday's film is 'On The Basis of Sex' the powerful true story of

US Supreme Court Justice Ruth Bader Ginsburg who led the fight against gender discrimination. Future dates are: 24th May 'Green Book' inspired by the true story of a tour of the Deep South by African American classical and jazz pianist and Italian bouncer who served as his driver and bodyguard. 14th June 'Loving Vincent' a biographical drama film about the life of the painter Vincent van Gogh, and, in particular, about the circumstances of his death. It is the first fully painted animated feature film.

Messy Church: Rachel Hitchcock said this is an informal introduction to the church with fun activities for children and parents followed by afternoon tea. They are held on the last Sunday of the month.

DATE OF NEXT MEETING: will be **Wednesday 3rd July** in the Church Hall at 8pm with Exec at 7.30pm.

Nayland Over 60s LUNCHEON CLUB

A Monthly Lunch for Senior Citizens
Longwood Barn, Fen Street ~ 12 noon for 12.30pm ~ £3

Tuesday 25 June
Thursday 18 July Summer : Tea Party
(August : No Lunch)
Tuesday 24 September

Come along and join the friendly atmosphere for a chat with friends, old and new.

If you would like to join us for lunch just come along. If transport down to Fen Street is difficult telephone Olga Alexander on 263923 to see if we can collect you.

NAYLAND WITH WISSINGTON PARISH COUNCIL

EXTRACTS FROM CHAIRMAN'S REPORT FOR THE ANNUAL PARISH ASSEMBLY - 29 APRIL 2019

FINANCE

All areas of PC expenditure are reviewed every December when the budget for the following financial year is set and approved. The 2019-2020 PC Precept element of Council Tax was increased by 1.9% this month. The only other income comes from allotment rents and burial fees, both of which go towards the costs of administering and managing those areas. Previous grants from central government and Babergh have ceased and bank interest on capital is very low.

STREETLIGHTING

We had expected the whole of the street lighting project to be completed and paid for by now. This ongoing commitment distorts the true end of year balance but at least the completed work has now been invoiced after a two-year delay. We are still waiting for the installation at Mill Street/Bear Street junction plus an alternative light where one householder has refused consent to a replacement lantern. Unexpectedly, we had to remove the LED lantern on Norfolk's garage in Mill Street when the building was demolished. A possible relocation site has been identified. However, there is a complication because of potential roadworks on the bridge and pavements in that area and we need to co-ordinate any work with the relevant authorities. A more efficient replacement for the standard light at the corner of Newlands Lane has been ordered. These unexpected extras have increased the overall cost of the scheme but the bus garage lantern will be re-used and the LED lights will continue to reduce our running costs.

VILLAGE HALL AND PLAYING FIELD

Loans Board repayments by Parish Council for Webb's Meadow, the Village Hall and the 1999 extension paid are £2233.72 per annum. These loans will end in 2025 and 2030 and the outstanding debt is £10,900.68. The PC has earmarked £10,000 from the capital investment fund towards the replacement roof. Planning permission has been granted as a first step. The Hall is an asset for the benefit of all residents in Nayland and Wiston.

HIGHWAYS

The PC will revisit our previous campaign for a 20 mph limit in the centre of the village. We also need to find a way to limit the number of lorries directed onto unsuitable roads by sat nav causing impact damage to houses, destroying grass verges and obstructing narrow lanes and junctions. Incidents are reported whenever possible but we are asking all residents to help us to set up a lorry watch scheme, similar to the HALT campaign of the 1990s. We have arranged a site meeting in Wiston with SCC Highways Officers about problems experienced there. Unauthorised parking by school parents in the turning circle of the vicarage driveway, which is not part of the public highway, is continuing to cause damage and inconvenience, as is some irresponsible parking at the start and end of the school day. Last month someone was prevented from driving from the fire station with the defibrillator when a resident on Harpers Estate was taken ill.

LITTERPICKING

Our contractors work in different parts of the parish for two hours each week, including verges on main roads that are really Babergh DCs responsibility. It is now unsafe to walk on some A134 verges because of overgrown bushes. SCC Highways have been asked to cut these back for two years. We regularly notify Colchester BC about litter on the Essex side of the A134. Two Community Litterpicks are organised in conjunction with the Conservation Society when volunteers clear PROW and permissive footpaths as well as streets and open spaces. In those weeks our contractors concentrate on Wiston. We are grateful to everyone who picks up litter regularly throughout the year. We are not so happy about those dog walkers who don't clear up after their dogs or choose to litter the countryside with poo bags instead of taking them to a bin.

The Environment Agency suggested that the PC and residents take over the task of clearing and disposing of vegetation and debris trapped at the Mill Stream grille. However, the PC does

not regard this as a safe activity for volunteers. We would appeal to residents not to flytip their garden waste or reeds in the mill-stream. Reed-cutting needs to be done according to EA guidelines at the proper time of the year, in the Autumn, only.

CALEY GREEN AND POP'S PIECE

These areas are managed by the PC under a SCC licence. The maintenance budget is reviewed each year. The Friends of Caley Green have helped to monitor and prevent parking on the Green, but there has been damage caused by vehicles. A conservation habitat was created using the fallen willow, but unfortunately, someone has used a chain saw to cut up and steal logs from the pile. SCC and the Environment Agency are aware. Caley Green was used for a Remembrance Garden of crosses and Tommy sculpture as part of the parish WW1 Centenary events in November. This had a strong impact on residents and visitors as did the service involving Nayland School pupils organised by the Nayland Royal British Legion.

PLANNING SINCE APRIL 2018

The PC continues to make representations to Babergh DC and to SC Highways about the lack of site meetings for controversial planning applications. This Council does not believe that it is always possible to make an informed judgement about detrimental impact on neighbours, Conservation Area or AONB just by looking at drawings and photographs, particularly if those at County or District level making that judgement have no personal knowledge of the location. This Parish Council was consulted by Babergh on 51 applications for planning and listed building consent this year, including 8 applications for tree work. 42 have been decided. There are 9 applications still awaiting a decision and 2 have been withdrawn. The PC had no objections to most of these applications, although sometimes conditions were requested, particularly in respect of annexes or heritage materials. We did object to some elements of the detailed application for 5 houses at the Bungalow Harpers Hill site that was granted outline permission in 2017. One application for change of use from commercial to residential and division of a listed building into flats did not meet planning regulation criteria and the application has been withdrawn. We objected to the scale of the proposal at Chandlers, 100 Bear Street. No decision has been made by Babergh at the time of writing.

Listed building consent was granted for the alterations at the Post Office but sadly the proposal for the Community Stores and Post Office was unable to go forward. It now seems likely that we will lose our Post Office when Patsy Ford retires.

The Babergh District Local Plan has been delayed several times but should be published online for public consultation in June this year. We would advise all residents to look at the plan and comment.

The Local Housing Needs Survey took place in 2018. It did highlight the needs of 89 individuals unable to find suitable affordable accommodation to rent or buy.

Residents will need to decide whether to set up a Community Committee with the PC to create a Neighbourhood Plan and volunteers will be needed. Without a Neighbourhood Plan, the parish will be more vulnerable to speculative development and would have no say in the kind of development that the parish needs. Most parishes in Babergh either have a plan already or are working on one.

It has been very difficult to cover all the work needed to get things done during the past four years with only seven out of nine members to share the work load. Unfortunately, only five candidates, stood for PC this time. It will be even more difficult if we cannot fill the four vacancies.

I would like to thank my fellow councillors, particularly those who are retiring after several years, for their commitment and support. We thank our Parish Clerk, Debbie Hattrell, for her diligence and hard work and keeping us within the legal bounds of a local authority. We also thank all volunteers who work for the good of the whole community.

NAYLAND WITH WISSINGTON PUBLIC RIGHTS OF WAY Footpath Warden's Annual Report – April 2019

The public rights of way network in the parish continues to be freely available and generally easy to use. Throughout the past year public footpaths across arable land were adequately reinstated, and the upgrowth of natural vegetation on other rights of way was cleared by Suffolk County Council (SCC) when necessary. On occasions during the summer some permissive paths became a little overgrown but in general all remained passable. The permissive path to Stoke by Nayland was regularly mown and continues to be a well used addition to the local path network.

The large area of Open Access Land at the bottom of Fen Street is well used, especially throughout the winter months when there are no cattle grazing the meadows.

Very few reports of problems have been received by the Parish Council in the last year which hopefully means that walkers are finding our paths in an acceptable condition. Problems that were referred to SCC and ECC include:

Footpath 9: the kissing gate at the Wiston Road end of the path became difficult to use and was reported to SCC who arranged for it to be repaired so it's now safe and easy to use.

Footpath 13 Nayland with Wissington/Footpath 47 Gt Horkesley: a fallen tree to the north of Horkesley Lock footbridge was leaning over the main path used by walkers. It is unclear whether SCC or ECC is responsible for this section of ProW; both inspected the tree. Although ECC may not be responsible its footpath inspector realised the tree could pose a danger to walkers and very quickly arranged for it to be made safe. Clarification regarding responsibility has been sought.

A small hole in the decking of the footbridge has recently been reported to ECC who is responsible for the bridge itself and the steps on either side

Permissive path adjacent to Stour (Essex side): the erosion of the river bank continues to cause concern, especially where the width of the path is also reduced by fallen fencing. The landowner was advised of the potential dangers last year but it doesn't appear that any action has been taken to date. However local walkers are aware of the problem and opt to walk in the field ie on the other side of the fencing.

GENERAL MATTERS: There is much evidence that our public rights of way network, the permissive paths, and the Open Access land in the parish are enjoyed by many people living in Nayland and Wiston. Regular use is the best way to keep paths from becoming overgrown, and it helps to show people less familiar with the network where they are allowed to walk. To fully benefit from this may I remind walkers to keep to the legal line of public footpaths and not to wander onto adjacent land.

Most public footpaths have a legal width of between 1 and 1.5 metres. Not everyone is aware that it is trespass against the owner of the land if walkers, or their dogs, stray beyond the legal line of a path.

FP28 & FP41 between A134 and the Weir: These Public Footpaths are on top of the embankment on the old towpath beside the river but unfortunately some people are still walking through the wildflower meadow often immediately beside the sheep fencing. To help to protect the wild flowers and other wildlife please use the public right of way on the top of bank.

DOGS on OPEN ACCESS LAND (The Fens): Please note, that in order not to disturb ground nesting birds on all areas of Open Access Land, the law requires that between 1st March and 31st July all dogs are kept on a lead no more than 2 metres long. The law also requires that dogs are kept on a lead whenever cattle or other livestock is grazing the land.

DOG FOULING: Unfortunately the matter of dog fouling is still a problem on our paths. While most dog owners 'pick up the poo' some then throw the bags into bushes, or dump them next to paths. Earlier this year at least twelve bags could be seen where someone had thrown them into a small area next to the steps on the north side of Anchor Bridge. They not only looked extremely unsightly but would be swept into the river (and onwards to the sea?) when water levels are high adding to the problems of plastic pollution.

So, as in previous years, I'd like to remind all dog owners to clear up after their dogs, and when they have done so to use the bins provided to dispose of the bags. If there are no bins nearby please hang on to the bags until you reach one, or when necessary wait to dispose of them at home.

Sally Bartrum, Footpath Warden, Nayland with Wissington

LORRY WATCHERS NEEDED

Lorries are getting bigger and bigger. More of them are being guided by Sat Nav along our narrow roads and streets, causing impact damage to jettied medieval properties, destroying grass verges, putting pedestrians at risk and getting stuck across junctions in the centre of the village.

Could you help to monitor lorry traffic in Nayland or Wiston?

By recording and reporting every incident to Suffolk Highways we can discourage companies from using inappropriate roads as a shortcut to and from A134 or A12.

The Parish Council would like to set up a lorry watch team along the affected routes to record and report incidents and carry out surveys of lorry traffic at various times of the day.

If you would like to help, please email
mary@naylandwithwissington.suffolk.gov.uk
or telephone 01206 262712 for more information.

Mary George, Chair, Nayland with Wissington Parish Council



Lorry travelling from the A134 at dusk via centre of village got stuck in Court Street, had to reverse from Court Street. Residents had to assist the driver to turn in the entrance to Court Knoll before it could return to the A134. The incident was reported to SCC Highways by Mary George. Photograph taken by Simon Dunstan.

Nayland Baby & Toddler group

Come and join the Nayland Baby and Toddler Group and keep it thriving.

We are currently looking for some new helpers to run this essential community group come September 2019. The group attracts many local families and carers and is a great place to make new and meet up with old friends. Help is needed to run the group by setting up toys, making tea and coffee and packing away at the end of the session along with some basic admin tasks. *More info on page 31.* Please get in touch if you can help.

Contact: Kate: 0774 3259796 or Anna: 0782 6153023

Nayland Baby & Toddler group



Bring your child, trained or not, to the Nayland playgroup.

Great for:

- exercise & agility
- sociability
- obedience(!)
- healthy treats

Fridays during term time, 9.30-11.15am in Nayland village hall



NAYLAND PRIMARY SCHOOL HSA

Summer Fete

Friday 21st June

at 3.20pm

TUCK SHOP • RAFFLE • TOMBOLA

JEWELLERY • BBQ • PLANTS

ICE LOLLIES • REFRESHMENTS

FACE PAINTING & TATTOOS

... PLUS LOTS OF CHILDREN'S STALLS ...

All proceeds to Nayland Primary School HSA



WoodlandCorner

SUMMER HOLIDAY FUNSHINE CLUB

**31st July, 6th August, 8th August,
12th August, 16th August, 20th August,
22nd August, 28th August
& 30th August**

9am-4pm £20 full day

Aged 3-11 years and two year olds already attending Pre-School at Woodland Corner

For further information, contact Woodland Corner
tel: 01206 263054 e-mail: woodlandcorner@outlook.com
web: <http://woodlandcornernayland.blogspot.com>
Registered Charity 1168815



Woodland Corner
Pre-School & Wraparound Care

Spaces now available for September
Register your interest today

Woodland Corner are now allocating pre-school places for the next school year. If you have a child turning 2+ in the next year, please contact us to arrange a viewing and complete a registration form.

In the grounds of Nayland Primary School, Bear Street, Nayland CO6 4HY
Tel: 01206 263054 Email: woodlandcorner@outlook.com
web: <http://woodlandcornernayland.blogspot.com>
Woodland Corner is a Registered Charity 1168815



Nayland & District
Horticultural Society

SUMMER GARDEN PARTY

FOR MEMBERS

Friday 19th July

7.30pm at Parkers, Bear Street

For your free ticket please contact Margaret
01206 262022 or trevor.smy24@gmail.com

In case of inclement weather we need to restrict numbers
so please book early to avoid disappointment

- Tour of the lovely gardens
- Refreshments and buffet
- Free ticket draw

www.naylandhortsoc.org.uk



A CELEBRATION

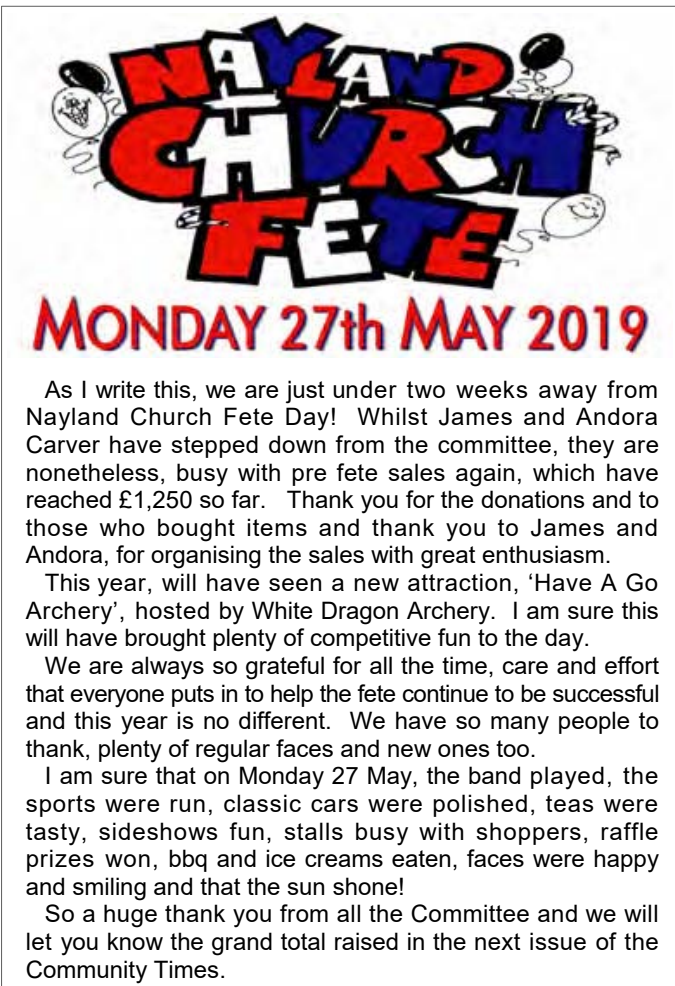
Tinuke Olafimihan
invites you to
an evening of music and fun
with her three children.

There will be easy listening and enjoyment from
Etienne, Tilly and Rafael
who are quite grown up now. Many of you
will be familiar with them as young children.

This 'Cabaret'
is on
Thursday 18th July

at 7.30pm in Nayland Village Hall
Doors open at 7pm
We look forward to seeing you

Tickets are £7 - under 18 are £4
They will be available from Nayland Post Office from 24th June
or at the door on the night.



NAYLAND CHURCH FÊTE

MONDAY 27th MAY 2019

As I write this, we are just under two weeks away from Nayland Church Fete Day! Whilst James and Andora Carver have stepped down from the committee, they are nonetheless, busy with pre fete sales again, which have reached £1,250 so far. Thank you for the donations and to those who bought items and thank you to James and Andora, for organising the sales with great enthusiasm.

This year, will have seen a new attraction, 'Have A Go Archery', hosted by White Dragon Archery. I am sure this will have brought plenty of competitive fun to the day.

We are always so grateful for all the time, care and effort that everyone puts in to help the fete continue to be successful and this year is no different. We have so many people to thank, plenty of regular faces and new ones too.

I am sure that on Monday 27 May, the band played, the sports were run, classic cars were polished, teas were tasty, sideshows fun, stalls busy with shoppers, raffle prizes won, bbq and ice creams eaten, faces were happy and smiling and that the sun shone!

So a huge thank you from all the Committee and we will let you know the grand total raised in the next issue of the Community Times.



STOUR BORDER Country Music Club

Nayland Village Hall 7.30 - 10.30
Admission, usually £5, doors open 7pm
No bar – please bring your own drinks.
Tea/coffee & light refreshments available

SUNDAY 23RD JUNE
'Brian's Country'
A popular return for Brian Mann

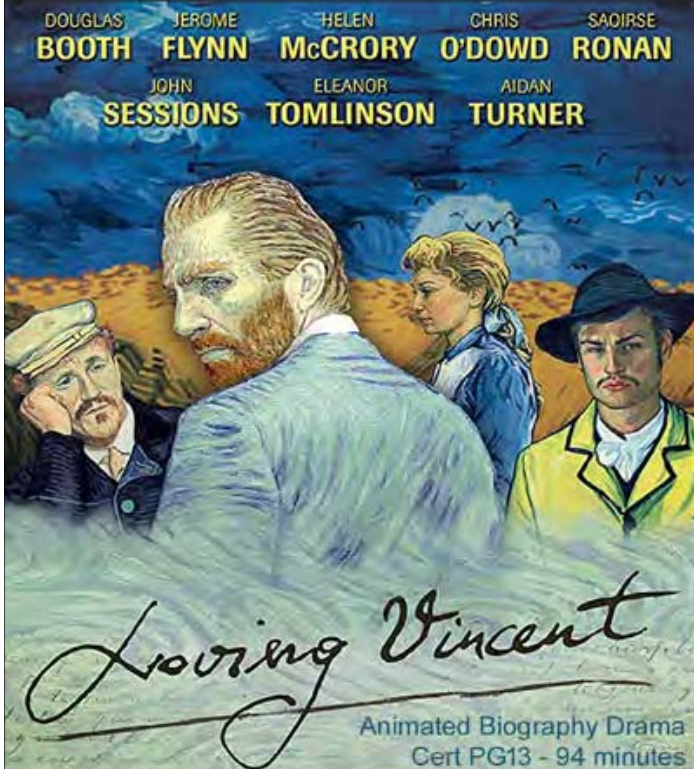
SUNDAY 21ST JULY
'Budgie Coleman & The Mustard Band'
First time here for these gentlemen of country music

SUNDAY 18TH AUGUST
'Colt Murphy'
A popular return for this solo artist from Liverpool

SUNDAY 22 SEPTEMBER
'Long Shot'
A popular return for this trio

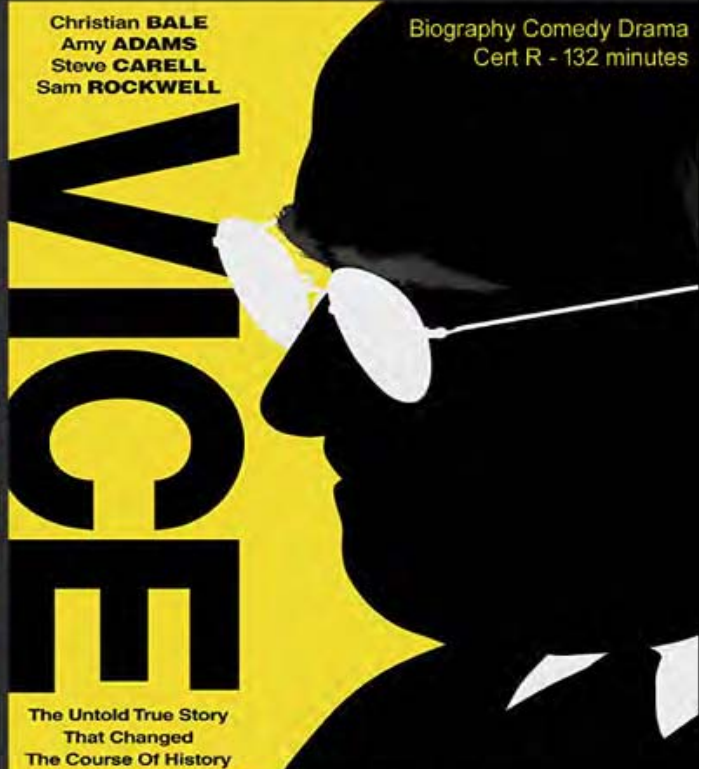


NAYLAND VILLAGE HALL CINEMA Starts 7.30pm Doors open 7pm

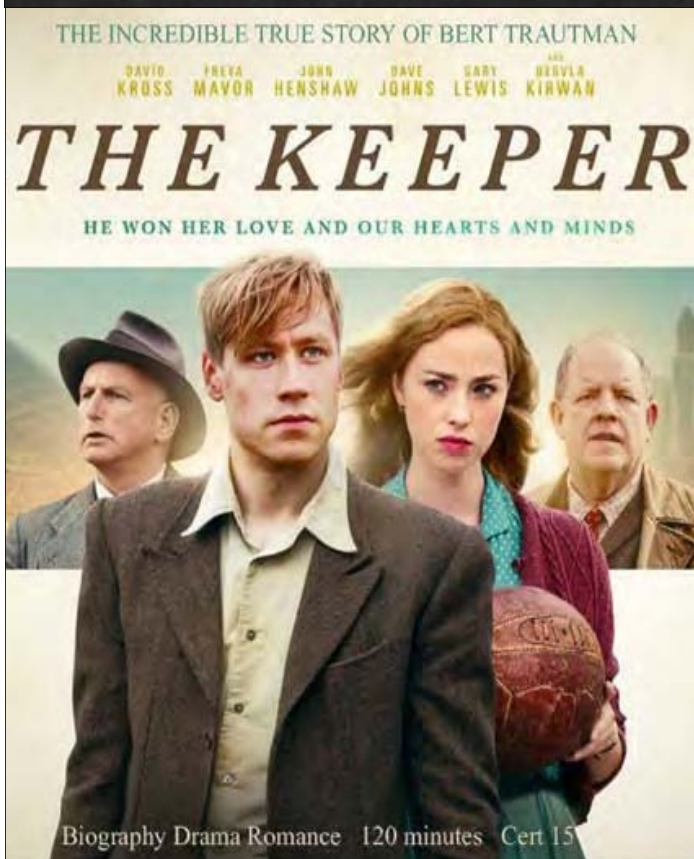


Friday 14th June

Refreshments served before and during the interval. Tea/coffee and biscuits will be by donation with a charge for other refreshments and the bar. Tickets £5, under 16 £2. A loyalty card will be issued on the first visit to the cinema which will then be stamped at each visit. Every fifth film will be free of charge. *Further details on page 28*



Friday 12th July



Friday 26th July



Friday 9th August

Nayland-with-Wissington Conservation Society

Registered Charity No. 268104

CEDRIC MORRIS ARTIST & PLANTSMAN

Speaker: Sarah Cook



MONDAY 24th JUNE

7.15pm for 7.30pm

Nayland Village Hall

All are most welcome

www.naylandconservation.org.uk

Nayland with Wissington Conservation Society

Registered Charity No. 268104

NAYLAND OPEN GARDENS

**SUNDAY
9th JUNE
2019**

2pm-6pm

Tickets from
Gardens & Hall

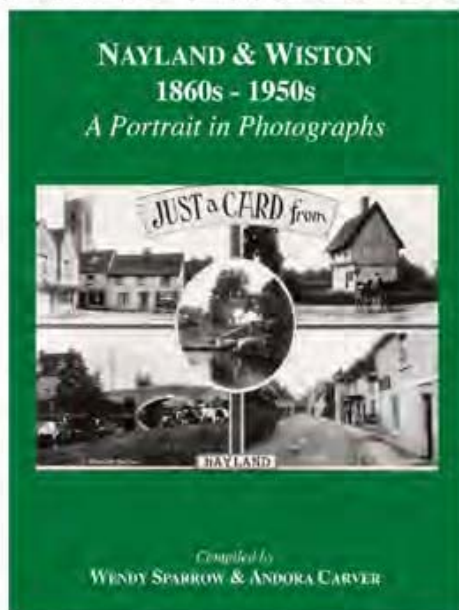
£5 - children free

TEAS
in the Village Hall

www.naylandconservation.org.uk

If anyone would like to include their garden on the list, please contact Mike Hunter on 264100 or Jill Slater on 262145

NEW EDITION NAYLAND PHOTO BOOK



with caption updates and enhanced photographs

Price £6

Available from:

Forget Me Not, Committee Members
or Conservation Society meetings

www.naylandconservation.org.uk

NAYLAND VILLAGE HALL ROOF PROJECT

The Village Hall is an important village asset and we all have a responsibility to ensure that the Hall is fit for purpose and available for future generations of village residents.

Progress with fundraising and grant applications continues but in order to raise the £225,000 required for the roof replacement there is a need for donations from the village residents.

Please consider giving to this very important village project.

Cheques payable to Nayland with Wissington Parish Council should be sent to the Parish Clerk, Mrs Debbie Hattrell, 12 Hitchcock Place, Sudbury CO10 1NN.

We are very grateful for the donations and pledges we have received to date.



Nayland & District Horticultural Society have a few seats left for the coach outing to Pashley Manor Gardens

Wednesday 5th June

Pashley Manor Gardens, on the border of Sussex and Kent, has sweeping herbaceous borders, elegant rose and historic walled gardens, a productive kitchen garden, enchanting woodland paths and tranquil vistas.

In addition to the gardens, you can savour the homemade, local food in the café; relax on the terrace with refreshments and be captivated by the exhibitions of sculpture and art.

Coach leaving Nayland 9.30am, return from Sussex 4:30pm.

The cost will be £25 to include travel and entry.

Refreshments are available. Open to non-members.

If you would like to join us on this outing contact Trevor or Margaret Smy on 262022 or trevor.smy24@gmail.com for availability.

Booking forms can be returned to the HortSoc box in the Post Office, or direct to Trevor Smy at 24 Harpers Estate.

Cheques payable to *Nayland & District Horticultural Society*.

For more information, visit www.naylandhortsoc.org.uk

NAYLAND 10K FUN RUN

The third annual Nayland 10k is back! Sponsored by Peake Fitness and supporting lots of local charities including SESAW, we are very excited to see 1,000 runners take part and enjoy our fun but challenging route.

Luke Rumbelow, the organiser, said he's thrilled to be supporting SESAW and the local community:

"The Nayland 10k has gone from strength to strength every year thanks to all our volunteers, especially the team from Nayland Community Council. We're promoting a more greener event this year and hope to offer our runners something different. The event attracts hundreds of families, children, amateur runners and experienced club runners, so there is a real mixture of participants. This is what is so special about the event. With tickets from £5 it's also good value for money."

As well as raising money for local causes, the events team are looking to stage a more greener event this year. As well as reducing event waste and promoting recycling, they will be introducing runners to Ooho water capsules made from seaweed, and each runner will be awarded a very unique finisher's medal made from sustainable wood.

The Nayland 10k are also promoting their fundraising with SESAW. Fundraise at least £75 for SESAW and get one of our limited edition Nayland 10k running tops! We had such a demand for running tops last year, here is your opportunity to get involved and raise some money for charity.

The team are also on the hunt to recruit lots of volunteers, so if you know anyone who perhaps wants to give their time up and contribute to our fundraising event please do get in touch.

Head to nayland10k.co.uk for more details and to secure your place in this wonderful event.

"One of the hardest & best"

EventNation

NAYLAND 10K

RUNNING FOR THE COMMUNITY

SPONSORED BY

PEAKE Fitness

10k 5k 1k

The heart of Constable Country

Competitive & family friendly
+ off-road Fun Run

- ✓ Improved multi-terrain route
- ✓ Chip timing for 10k & 5k
- ✓ Larger route specific medals
- ✓ Distance markers
- ✓ New running numbers & bag drop
- ✓ Strict starting times
- ✓ Run for SESAW or your favourite charity
- ✓ Free event car parking

Feedback

"Difficult, enjoyable, challenge" "Difficult, hard terrain" "Tough, Bees, Stiles" "Challenging, hot, fun"

"Friendly, organised, challenging" "Great first run" "Hilly, amazing, cows!" "Harder than expected"

"Well organised fun" "Fun, memorable, pleasurable" "Really great event"

Donating to Nayland Community Council & SESAW

Nayland & Wiston Community Council

1000 entries available

SESAW

Sunday 30th June 2019

nayland10k.co.uk

Nayland & District Horticultural Society

SUMMER FLOWER SHOW



Saturday 3rd August

2pm - 5pm Nayland Village Hall

Teas, Produce Stall, Raffle, Nayland Calendar 2020

Admission 50p - Opening 2pm, Prize Giving 4.30pm

Classes for: Vegetables, Fruit, Flowers, Flower Arranging, Cookery, Preserves, Country Drinks, Art & Craft, Photography, Children's & Family's Sections - Entries in by 31st July.

Show schedules available at Nayland shops, Trevor 01206 262022 or at www.naylandhortsoc.org.uk

THE NAYLAND WITH WISSINGTON LAND COMPANY



The Nayland with Wissington Land Company was formed in 2005 to facilitate ownership of the Conservation Meadow abutting the north bank of the River Stour where it runs parallel with Bear Street.

In 2012 a further section of land located adjacent to the first plot was acquired. On both occasions the purchase price was raised by donations from the public and the fund raising was managed by the Nayland with Wissington Conservation Society.

The Company is limited by guarantee which means it doesn't have shareholders but is "owned" by members who give a personal guarantee for the debts of the company in the event of its liquidation (although the sum guaranteed by each member cannot exceed £1).

The current members are all sitting on the board of the Company and comprise John Alexander (Chairman) Dipak Warren (Secretary) David Heigham (Treasurer) and Martin Wright, Richard Cave, David Slater and Mike Hunter.

Recently the board have held a number of meetings with a view to re-visiting the previous basis upon which the land was

managed. The Dedham Vale Project have been very helpful in giving management guidance and the Project arranged for the Suffolk Wildlife Trust to make specific management recommendations contained in a draft management plan to cover the next five years. Similarly, the Environment Agency have also made a number of recommendations all of which are under consideration by the board. Once the plan is in a final form the local community will be informed of the progress being made.



HARE & HOUNDS LEAVENHEATH

traditional country freehouse with 3 real ales
pool table - open fire - beer garden & patio - play area

**WE NOW SERVE HOMEMADE PIZZAS
EVERY SATURDAY EVENING 6 - 9PM
AVAILABLE TO EAT IN OR TAKEAWAY**

BURGER WEDNESDAYS (6 - 9PM)

A pint of your choice plus a choice of homemade burger
with all the trimmings for just £8

SUMMER BEER FESTIVAL

A DATE FOR YOUR DIARIES
8TH - 11TH AUGUST

PLEASE SEE OUR WEBSITE FOR OTHER
UPCOMING EVENTS

OPENING HOURS

TUESDAY, WEDNESDAY, THURSDAY 12 - 3PM & 5 - 11PM
FRIDAY & SATURDAY 12 - 11PM
SUNDAY 12 - 10PM
CLOSED ALL DAY MONDAY

FOOD IS AVAILABLE

TUESDAY - SATURDAY 12 - 2PM & 6 - 9PM
SUNDAY 12 - 3PM



www.hareandhoundsleavenheath.co.uk



01787 212396

M & J REGAN

Building Contractors

A local family company who have been trading
in the area for over 35 years.

01206 264019

07803 604254

m.regan3@sky.com

Evolve
LANDSCAPES
Landscape design & build

- Landscape Design
- Construction work
- Paving / driveways / patios / paths
- Fencing / decking / garden walls
- Pruning / hedge cutting
- Tree felling / clearance
- Regular garden maintenance

T 01206 263813 M 07841625358

E info@evolve-landscapes.co.uk

www.evolve-landscapes.co.uk

Nayland House

Off Bear Street
Nayland CO6 4LA

**We offer long and
short term care for elderly
and dementia residents
in our beautiful home set
in the heart of the village**

**You are very welcome to
visit – come and see our
excellent facilities**

**For more information
please telephone:
01206 263199**

TURNER & MAY LIMITED

Plumbing and Heating Engineers

General Plumbing
Central Heating Installation
Energy Efficiency Boiler Installation
Boiler Maintenance
Underfloor heating
Water Softeners
Bathroom Design & Installation
Free Estimate

*We offer a fully comprehensive range
of domestic plumbing and central heating services.*

Excellent local reputation

Over 30 years of experience

Tel/Fax: 01206 263392

Mobile: 07966 286603

Email: office.tandmltd@gmail.com



Tim Allen & Son

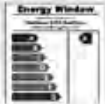


Established 1994

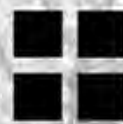
Windows, Doors & Conservatories
PVC-u, Aluminium & Hardwood
Fascias, Soffits, Bargeboards, etc
Also Extensions & Garden Rooms
Replacement Sealed Units

Tel: 01473 827086

Mob: 07885 437409 or 07909 091691
timallenwindows@gmail.com



Insurance Backed Guarantee



Water Lane
ARCHITECTS



An RIBA Chartered Practice

- Architectural services for new and existing buildings
- Residential and commercial schemes
- Designs for greater sustainability — AECB member

Call: Chris Exley ARB, RIBA, AECB on:

info@waterlanearchitects.co.uk

www.waterlanearchitects.co.uk

Water Lane, Little Horkesley

01206 271617

01206 890178

07827 414847



Shimmy, Shake, Wiggle & Giggle
Dance Fitness

FunDancing
Classes

Nayland Village Hall

every Wednesday at 10:00

spaces are limited - to reserve yours

Call Janet on
07506 350 455

classes also held in:

- Boxford
- Capel St Mary
- Stratford St Mary

janet@fundancing.co.uk
www.fundancing.co.uk



FunDancing



FunDancing.Suffolk

Nayland Dental and Cosmetic Clinic



18 High Street, Nayland, Suffolk CO6 4JF

Family Dentist

Facial Rejuvenation

Hygienist

Smilelign

PRIVATE DENTISTRY
AT AFFORDABLE PRICES

Free examination for children of school age with full paying adult

DENPLAN AVAILABLE
SMILELIGN CONSULTATIONS
TEETH WHITENING - only £199

FREE ORAL CANCER SCREENING
GIVEN WITH EXAMINATION

Early Morning & Late Evening Appointments Available

Call us to book an appointment or request an
information pack **01206 262262**

www.naylanddentalclinic.co.uk

Beer Festival

BBO FAMILY ENTERTAINMENT LIVE MUSIC



ANCHOR INN
NAYLAND

ANCHORNAYLAND.CO.UK

PETER MOSS & SONS

Providing all aspects of
vehicle maintenance



**68 Bear Street
Nayland
Tel: 01206 262866**

SERVICING ■ REPAIRS

BUGG SKIP HIRE

**For All Your Waste
Disposal Requirements**

- Excellent Service
- Lowest Prices
- Various Sizes to Suit Every Situation



Tel: 01206 262605

www.buggskiphire.co.uk

The Woodyard, Gravel Hill, Nayland, CO6 4JB



Gladwins Farm

Harpers Hill

Nayland

Suffolk CO6 4NU

Tel: (+44) 01206 262261

Fax: (+44) 01206 263001

E-mail: contact@gladwinsfarm.co.uk

www.gladwinsfarm.co.uk

- Award-winning self-catering cottages – sleeping 2–8 people. Charming conversions of period farm buildings, some are designed to be accessible by accompanied disabled visitors, some luxury cottages with private hot tubs.
- Moving house? Longer tenancies in the Winter period can be arranged.
- Swimming lessons throughout the week. Fully air-conditioned in a lovely building. Available for childrens' parties.
- Guests have the use of the pool, sauna, hard tennis court and playground. The lake is stocked with coarse fish. Pets welcome.

Brochure and details available from Stuart and Susie Bradshaw. 01206 262261

www.gladwinsfarm.co.uk

SALES & LETTINGS

Carter Jonas combine extensive local knowledge with a network of national offices including 12 in central London.

Whether you are a buyer, seller, tenant or landlord please call us to discuss your property needs.

SUFFOLK

01787 882881

suffolk@carterjonas.co.uk

St Mary's Court, Little St Mary's,
Long Melford CO10 9LQ

carterjonas.co.uk/suffolk

Carter Jonas

N.P. & S.G. Evans Plumbing & Heating

Hill Farm, Wiston, Nayland, Colchester CO6 4NL
npsgevs@gmail.com

Tel: 01206 262091 Mob: 07979 535670

For all your plumbing & heating requirements.
Also guttering maintenance & replacement.



NEW BUILDS • EXTENSIONS • RENOVATIONS

**ARCHITECTURAL SERVICES FOR
RESIDENTIAL AND COMMERCIAL BUILDINGS**

Tel: 01206 262697

E-mail: info@optimum-architecture.co.uk
www.optimum-architecture.co.uk

Optimum Architecture Limited
Nags Corner, Nayland, Nr. Colchester CO6 4LT 

GET IT RIGHT FROM THE START



BARNEY THE DECORATOR YOUR LOCAL PAINTER & DECORATOR

Quality Decorating Applied To Last!

Fully Insured - Friendly Professional Service
No Job Too Big or Too Small

Call Barney for your free quote: 01473 822787 or 07856 540664
or email: barneythedecorator@gmail.com 37 Malyon Rd, Hadleigh IP7 6RE

"Yet another superb safari, tailor-made for us by Jane"

Birding, horse-riding, photographic, 4x4, walking. Bookings ATOL / AITO bonded.



Jane Walker, Independent Safari Consultant
Farthing Hall, Nayland with Wissington
www.safari-consultants.com
01206 262352, JaneW@safari-consultants.com



PARGETTING

In June of last year Bill Sargent spoke to the Conservation Society on the ancient art of pargetting and he was so persuasive that Merlin Cunningham Batt decided to use his skills for the front elevation of her house in Bear Street.

Bill used lime plaster and worked a design which reflected the property's proximity to the river.

More on pargetting and traditional plastering can be seen on Bill's website <http://pargettingcompany.com/>

COMMUNITY LITTERPICK APRIL 2019

The six-monthly Community Litterpick was very successful with fifteen volunteers who collected eleven full sacks of rubbish in just over an hour from PROW footpaths, both playing fields, allotments and Nayland streets. The regular volunteers were joined by friends Isla, Pippa and Emily who came along with their family. As usual, Dave George cleaned some of the road and street signs. Parish Council contractors concentrated on Wiston and Harpers Hill during early April and collected several more sacks.

The litter collected included three small wheels, a two-metre length of aluminium left near the weir, an unusually large amount of cigarette ends along High Street and Mill Street and heaps of dog poo bags that had been dumped by dog walkers instead of being placed in the bins provided.

The Conservation Society and Parish Council would like to thank all the volunteers who joined us in April and everyone who clears up other people's litter on a regular basis from our streets and green spaces. The next Community Litterpick will take place during October.

Mary George, Parish Council
Mike Hunter, Conservation Society

WHERE ARE THE 2 PUBLIC ACCESS DEFIBRILLATORS IN NAYLAND?

- **Nayland Fire Station**, Bear Street, Nayland CO6 4HY on the outside wall by the entrance.
- **Nayland Village Hall**, Church Lane, Nayland CO6 4JH on the outside wall to the right of the main entrance.

Please familiarise yourself with these locations and let your friends, family and neighbours know too.



NAYLAND MOBILE LIBRARY

Route 20 : High Street P.O.

Saturdays at 10am-11.15am, every four weeks

22 June - 20 July
17 August - 14 September - 12 October
9 November - 7 December

Route 9 : Parkers Way

Saturdays at 3.55pm-4.30pm, every four weeks

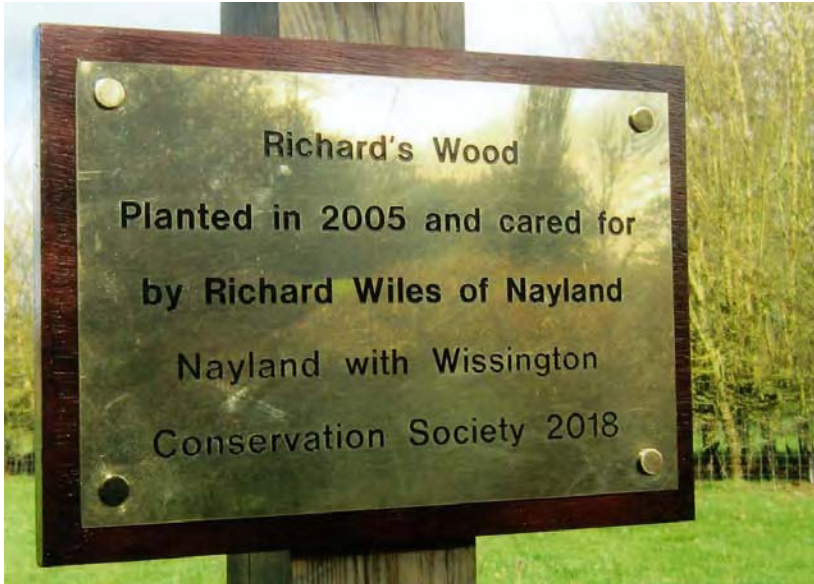
8 June - 6 July - 3 August
31 August - 28 September - 26 October
23 November - 21 December

Tel: 01473 263838 www.suffolklibraries.co.uk

SEE IT, SNAP IT, SEND IT...

Thank you to Hazel Gardiner for this charming photo with reflections of the surrounding trees in the brass plaque at Richard's Wood, an area of woodland located between the A134 and Nayland Meadow owned by the Nayland Land Company, which has been maintained by Richard Wiles.

Do keep what you see coming to lorraine.nayland@btinternet.com. View the colour version of the CT at: www.naylandcommunitycouncil.org.uk/CommunityTimes.html



Thank you to Gill Boardman who explains: *For many months we've put a bowl of water in our garden in case a thirsty hedgehog comes to visit. It wasn't until we trained a wildlife camera on the bowl that we realised that at least five different hedgehogs were dropping by for a drink!*



This was particularly timely as 5th-11th May was **Hedgehog Awareness Week** which is organised by the British Hedgehog Preservation Society (BHPS) and aims to highlight the problems hedgehogs face and how you can help them. This year the Charity is asking people to make a space for hedgehogs to live in their garden, this could be in the form of a log pile or wild area (that will also provide a buffet of creepy crawlies) or a more formal hedgehog home. The Society has a downloadable plan for building a hedgehog home on their website www.britishhedgehogs.org.uk/hedgehog-homes.

Hedgehogs have a tough time in the countryside nowadays with more intensive farming reducing suitable habitat and resulting in less creepy crawlies for them to eat and the rise in badger numbers as they compete with hedgehogs for worms and beetles, and also prey on them.

It is now well known that the population of hedgehogs in Britain is suffering from a serious decline. Hedgehogs are considered the gardener's friend as they can help keep some of the garden pests under control so we can only benefit from encouraging them into our gardens and keeping them safe.



Following all the excitement when Gordon, our resident Goose, received a Valentine card in February villagers were thrilled when in April a female greylag goose arrived and it looked as though they were quite smitten. However, to our dismay the relationship did not blossom. Thank you to Diana Green for capturing this photo during their brief courtship.

Dates for your diary

Nayland's answer to **The Antiques Roadshow**

with the assistance of
Reeman Dansie Auctioneers & Valuers

in the Village Hall
on the evening of
Friday 18th October



in aid of Cancer Research UK

----- o o o o o -----

A concert by the **Boxted Silver Band**

followed by
Tea and Home-made Cakes

on Sunday 15th September
in St James' Church

WALSH TRUST

Annual Statement as presented to the Annual Parish Assembly

This trust was created to distribute bequests under the will of Mrs Violet Jennie Walsh.

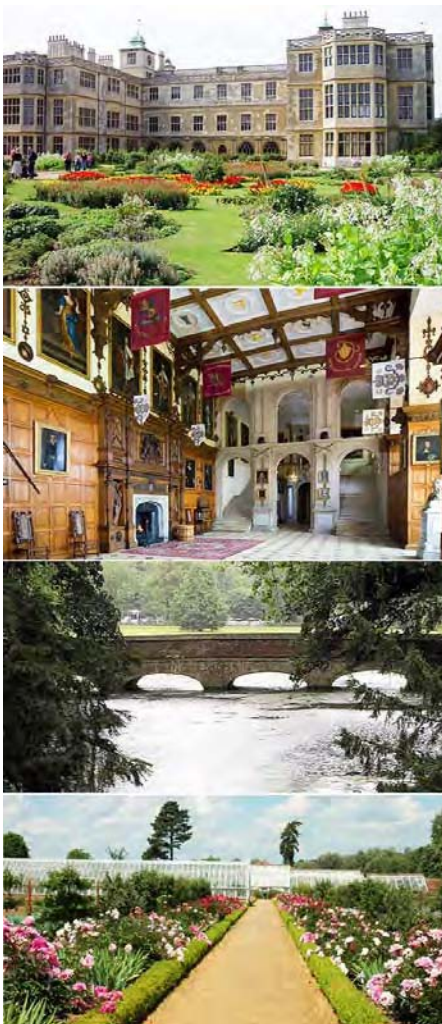
The Walsh trust is a parish charity which gives small Christmas Bonuses to the elderly within the parish. The Trustees are Gerry Battye; Mrs. Rosemary Knox; Miss Kathy Hunt; Mrs. Mig Drew-Knight; Mrs. Eva Rolfe and Mrs. Patricia Fuller.

Our income is too small to qualify for the Charity Aid Fund's bank account with its better interest rates, which means that our income continues to be relatively small. Therefore, we can only give bonuses to those residents over 80 who have lived in the village for at least 3 years. As we have no official

way of finding out who is 80, we rely on everyone to tell us of parishioners reaching this age by Christmas who would welcome and benefit from the Bonus. The trustees continue to be challenged by identifying exactly, the circumstances of possible recipients. If you are aware of a possible deserving recipient, please let one of the trustees know by December 1st. The Trustees shall meet in December to decide allocations. As a charity, we attempt to use all our annual income as bonuses, so once we have allocated the money, it is very difficult to give to latecomers, however deserving.

In December 2018, we gave out 15 single bonuses at £35 each; 3 Double bonuses at £50 each and two gifts worth £10. No other deserving recipients were identified. This made a total of £695 distributed.

Gerry Battye, Trustee



Nayland & District Horticultural Society

Coach outing to

Audley End House & Gardens Sunday 8th September

Coach leaving Nayland 10am, return from Audley End 4pm.

The cost will be £30 (£15 for English Heritage members) to include travel and entry to both the house and garden. Open to non-members.

Locally sourced hot and cold meals, drinks and snacks will be available.

Explore this decadent Jacobean mansion house and meet the staff in the Victorian Service Wing. Enjoy stunning views across the unspoilt Essex countryside and wander the tranquil gardens created by 'Capability' Brown and the elegant garden buildings, such as the bridge over the River Cam, are the work of Robert Adam, the neoclassical designer. Then trot across to see the horses in the Victorian stable yard.

Booking forms can be returned to the HortSoc box in the Post Office, or direct to Trevor Smy at 24 Harpers Estate.

Cheques payable to *Nayland & District Horticultural Society*.

For more information, visit www.naylandhortsoc.org.uk or contact Trevor on 262022 or trevor.smy24@gmail.com.

Audley End House & Gardens Booking Form

I would like to book seat(s) English Heritage Members Payment attached: £.....

Name: Tel:

Address:

Email:

Names of Guest/s: Where boarding coach: Stoke Rd / Parkers Wy / Harpers Est



Nayland with Wissington Society News



NAYLAND AND DISTRICT ROYAL BRITISH LEGION

Secretary: Andrew Gowen 262534 parkersag@yahoo.co.uk Chairman: John Partridge 263733

There is no doubt that our bimonthly meetings are enhanced by the drinks beforehand and the pre meeting talk. On 13th May we heard Dick Strover recounting his father's experiences as a POW in WW1. An extraordinary tale of a brave man who was not content to remain a prisoner of war and spent his time taking every opportunity to escape. We have talks about wartime experiences in spitfires and working with the police forensics department at future meetings. Non members are welcome to attend these talks.

On 29th March we had an excellent visit to Stow Maries WW1 airfield; saw a number of WW1 flying machines and heard all about the battles with German airships coming across the North Sea to bomb us into oblivion!

A visit to Greenwich via a trip down the Thames is being proposed for the future as is a visit to the local Waste Disposal site. A visit to the Fruit Farm at Stoke is also planned for next year.

Some 40 attended our St George's Day Lunch at the Anchor which went down very well; enhanced by our two speakers. The plan is to hold this event every other year.

The plant sale at Parkers raised £586; £200 went to the Village Hall; £100 to the local Services Fund held by the Community Council and the remainder to the Church Hall. We had tremendous support from the surrounding villages. Thank you all.

Our next meeting is on 15th July at 7.30pm in the Church Hall. Please join us.



NAYLAND BOWLS CLUB

Chair: Mervyn Farthing 01206 851739 mervynpaul@btinternet

On the 27th April we held our annual Charity Bowls Tournament in the village hall; twenty teams from Suffolk and Essex played for the Nayland Charity Fours Shield. A friendly and competitive day was enjoyed by all. The eventual winners 'Friends Together', the team made up from bowlers from Clacton-Nayland-Newmarket, took the trophy and individual gift vouchers.

Our chosen charity this year was 'Lizzie's fund' in aid of The Brain Tumour Charity, which was set up in memory of Lizzie Bramall who lived in the village. A very successful day allowed us to present a cheque to Lizzie's mother, Sally Bramall, for an amazing £500. Sally gave an insight into the charity and what work they do.

In the April edition we invited villagers to pop in on the day for a cup of tea and see what carpet bowls is all about and enjoyed by many, unfortunately nobody turned up.





NAYLAND ART GROUP

Liz Thorne 262664

The group under the guidance of their two visiting tutors, Lesley and Vernon, have been painting a myriad of subjects, from ballerinas, African elephants, a male life model to the picturesque alleyway alongside St James' church in the centre of Nayland.

Some members attended the *Turner vs Constable; the great British paint-off*, a series of lectures by Nicola Moorby, held at the Village Hall which was very interesting and explored the work and lives of the two artists. The event concluded that Turner had the edge over Constable in relation to art, however their work was very different, like chalk and cheese, as were their lives and personalities. John Constable, the son of a Suffolk landowner who gave up the good life to focus on watermills, peasants and passing clouds while Joseph MW Turner, the progeny of a London barber and wigmaker, scrambled his way to the top by painting apocalyptic storms, eye-searing sunsets and history-defining battles.

We are planning a visit to Munnings Museum for the 'Behind The Lines' exhibition of his work when appointed as a war artist in France for the Canadian Cavalry Brigade and later for the Canadian Forestry Corps during 1918.

Colin Ramsell



OVER 60s CLUB

Secretary: Barbara Smith 501492

President: Eva Rolfe 263151

In May, instead of our usual meeting, we visited Perrywood Garden Centre at Newton Green where we enjoyed lunch in the refurbished coffee shop and browsing around the nursery and shop.

Our next Over 60s meetings will be on Thursday 13th June, followed by 11th July and 8th August - do pop these dates in your diaries. We haven't as yet planned any outings but hope to do so.

More members would be very welcome to come along and enjoy refreshments with us and have a chat and a game of bingo; we meet on the second Thursday of each month in Parkers Way Community Centre at 2.30pm.

Diana Whiting



NAYLAND LUNCHEON CLUB FOR OVER 60S

A Monthly Lunch for Senior Citizens ~ at Longwood Barn ~ 12 noon for 12.30pm ~ £3

Olga Alexander on 263923

The next monthly lunch will be held on 25th June then on Thursday 18th July the Summer Tea Party will take place. There will be no luncheon in August but they will resume on Tuesday 24th September.

Do make a note of the dates in your diary and come along and join the friendly atmosphere for a chat with friends, old and new.

If you would like to join us for lunch just phone to let me know. If transport down to Fen Street is difficult telephone Olga Alexander on 263923 to see if we can collect you.



NAYLAND AND DISTRICT WOMENS INSTITUTE

President: Jeannette Finch 262993

Secretary: Lorna Rumsey 01787 211975

On 18th March twenty-five members enjoyed lunch at The Saracens Head at Newton Green to celebrate the 62nd birthday of the Nayland branch of the WI. Also in March eight of our members attended a group meeting of the Stoke by Nayland WI. At our meeting in April Simon Gallup spoke on 'Unknown Constable Country'.

Looking ahead, on 21st May we will have our Annual Meeting and Resolutions, on 17th June Andy Malcomb from the Fishermen's Mission will talk on the subject 'The True Price of Fish and Chips' and on 15th July the subject of Paula Baker's talk will be 'Hedgehog Rescue'. Our annual afternoon Tea Party will take place on 19th August.

Our meetings are on the third Monday of the month, at 7.30, in Nayland Village Hall, visitors always welcome.



THE FRIENDS OF ST. JAMES' CHURCH, NAYLAND

Registered Charity Number 1052641

Chairman: Alan Edwards 262800 alan@edwards-online.net

We are still setting up events to be held over the late Summer and Autumn in or around St James' Church.

Only one is finalized; on Sunday 15th September the Boxted Silver Band will treat us to a one hour concert, followed by tea and home-made cakes! Tickets will be £7 each. Please make a note of this in your diary now, further details will follow in the next edition of the Community Times.



NAYLAND WITH WISSINGTON CONSERVATION SOCIETY

Chairman: Mike Hunter 264100
mikejphunter@gmail.com

www.naylandconservation.org.uk

Twenty members of the Conservation Society enjoyed an excellent walk on the Early May Bank Holiday Monday led by Chris Hunt who once again kept everyone amused with his anecdotes and the local history of the buildings and surroundings that were encountered en route.

Two days later nineteen members had a private tour of Euston Hall, a delightful restoration house still occupied by the same family, the Dukes of Grafton. Although the weather was very wet the contents of the house and the excellent guide lifted everyone's spirits. The house contains the largest collection of Stuart paintings in the country in addition to some wonderful works by Stubbs. A priceless clock by Thomas Tompion also caught the eye and the current Duke's record decks made an interesting contrast to the wonderful antiques, evidencing the fact that this is still very much a house enjoyed and lived in by the family.

In the last edition of the Community Times I mentioned the continuing financial support given by the Dedham Vale Project through their Sustainable Development Fund and I am pleased to confirm that once again they have agreed to make a grant available to the Society to permit the continuing analysis of the finds obtained from the excavation. This is the fifth consecutive year the Fund have made an award to the Society. We have also arranged for Jo Caruth, the leading archaeologist from Cotswold Archaeology (formally Suffolk Archaeology) to speak to the Society members and guests at Nayland Village Hall on Monday the 9th of December. More details of this meeting will be revealed in future editions of the Community Times.

Our next speaker is Sarah Cook. She will be telling us about Cedric Morris, the internationally renowned artist and plantsman who opened the East Anglian School of Painting in 1937. This subsequently moved to Benton End near Hadleigh where he lived for the rest of his life. Please come and join us at the Village Hall on Monday the 24th of June at 7.15 pm.

Finally, we shall have 21 gardens plus St James' Churchyard on show for this year's Open Gardens which will take place on the 9th of June. There are a number of new gardens open this year and we are also pleased to confirm that Alston Court will once again be opening its doors. Assistance is always welcome on this very busy day and if you would like to help please contact our Hon Secretary Jill Slater.



Top: May Day Walk, above: visit to Euston Hall



NAYLAND SURGERY NEWS

www.northhillsurgery.co.uk

Rebecca Renshaw, Practice Manager 481190

We have launched a brand new calling system in our Nayland Practice. A call board has been installed in our waiting room to inform patients when the GP/Nurse is ready to see them and where to find them.

We would like to remind our patients that we require 3 working days to complete any medication requests. We will be closed on Monday 27th May due to the bank holiday so please take into consideration you will need to allow enough time for your prescription to be processed. Please note due to North East Essex CCG guidelines we are only able to prescribe medication for 28 days at a time.

We offer a range of appointments at the surgery, including telephone appointments. Please speak to our reception team who can advise you who best to see or speak to depending on your symptoms.

We will be launching a new website, as part of the Creffield Medical Group - <https://www.creffieldmedicalcentre.nhs.uk/>, in the coming months which will provide up to date information on the surgery and be easier to use than our previous website. As soon as we have an exact date we will advertise the launch in the surgery and on our existing website.



NAYLAND AND DISTRICT HORTICULTURAL SOCIETY

Chair: Trevor Smy 262022 trevor.smy24@gmail.com www.naylandhortsoc.org.uk

Despite the cold late Spring, our annual **Spring Flower Show** on Saturday 23rd March was well supported. The steady stream of visitors were able to enjoy the beautiful floral entries, as well as having some refreshments and a chat. Our thanks to the judges and the helpers on the day. The 10th Spring Show had a total of 12 entrants producing 73 exhibits. The winner of the Olive Noakes cup was Alison Davies-Evans with 24 points, second place was Trevor Smy with 21 points and third place was Diane Leach with 13 points. Class results were:

Pot Spring Bulbs Corms or Tubers:	Trevor Smy, Alison Davies-Evans, Margaret Smy
Pot Five Daffodil/Narcissus:	Alison Davies-Evans
Pot miniature Daffodil/Narcissus:	Alison Davies-Evans, Hazel Gardiner
Pot Polyanthus or Primula:	Diane Leach, Jane Barbrook
Flowering houseplant:	Hazel Gardiner, Diane Leach, Alison Davies-Evans
Non- Flowering Houseplant:	Trevor Smy, Alison Davies-Evans
Three blooms floating in a dish of water:	Trevor Smy, Chris Jacobs, Jane Barbrook
Flower Arrangement 'Host of Daffodils':	Chris Jacobs, Hazel Gardiner
Flower Arranging 'Spring Fever'	Hazel Gardiner, Catherine Davison, Chris Jacobs
Vase Hyacinths:	Alison Davies-Evans, Margaret Smy, Hazel Gardiner
Vase mixed flowers &/or flowering shrubs:	Diane Leach, Ann Channon, Hazel Gardiner
Vase one kind of flowering shrub or tree:	Alison Davies-Evans, Diane Leach, Andrew Gowan
Vase three Tulips:	Diane Leach, Chris Jacobs, Alison Davies-Evans
Vase one Camellia:	Alison Davies-Evans
Vase six assorted Daffodil/Narcissus:	Jo Petersen, Trevor Smy, Alison Davies-Evans
Vase six miniature Daffodil/Narcissus:	Jo Petersen, Catherine Davison, Trevor Smy
Vase three specimen Daffodil/Narcissus:	Trevor Smy, Alison Davies-Evans, Hazel Gardiner
Rhubarb, 3 stalks:	Trevor Smy, Hazel Gardiner

Our Spring Speaker, Hannah Powell, gave us a very interesting talk about 'The History and Development of Perrywood Nursery'. Her grandfather bought the business in the 1950s, originally growing potatoes and pick-your-own strawberries, and Perrywoods was taken over by Hannah's father and mother in 1984. The family bought the Sudbury site on the 24th September last year. We were told that Perrywood is Number 3 in the UK top 100 Garden Centre League Table.

At our AGM Trevor Smy reported that last year there were many unusual weather events. Freezing temperatures in late February just before the Spring Flower show made entries more difficult, but thanks to our loyal entrants we had a nice show, enjoyed by all who came. The rest of the spring was fairly normal until the heat of the Summer. With our main show looming it was touch and go whether to cancel, as some other shows did, but we carried on and had a very good one which was an amazing testimony to all involved.

Trevor went on to thank; Andrew Gowen for auditing the accounts and both Sue and Andrew for allowing the Garden Party to be held at Parkers, always an enjoyable event, Pat Bray for keeping the local press informed, Justin Dowding for his inexhaustible patience and technical expertise for maintaining the website and creating posters, the judges for their expertise at our spring and summer shows, Margaret and Ann for manning the raffles, Anne and Ray Spencer (Ray for being 'volunteered' before he knew it!), Tom Gardiner, everyone who had donated cakes or raffle prizes, the Committee for organizing trips, outings and their work for the Flower Show.

Officers re-elected were Trevor Smy (Chair), Jane Barbrook and Chris Jacobs (joint Secretaries), Margaret Smy (Treasurer), Hazel Gardiner, Colin Ramsell, Sheila Wildish, Shirley Whitnell, Sylvia Bond (Committee). After the meeting there was a light-hearted horticultural based quiz organised by Trevor.

The **morning market** on the 11th May was very successful. The tables were full of healthy plants for sale and we had very good support from visitors.

There are still a few seats left on the coach outing to **Pashley Manor Gardens** on the **5th June** - further details on page 14 or www.naylandhortsoc.org.uk. If you are interested, please contact Trevor or Margaret Smy on 262022 to check availability.

The schedules for the **annual Flower Show** on **3rd August** will be distributed locally this month. If you require additional copies, they are available from the Post Office or can be downloaded from the website. Schedules can also be collected from Trevor or Margaret.

The coach outing on **8th September** is to **Audley End House & Gardens**. Join us for a leisurely stroll around the house and magnificent Capability Brown designed gardens affording stunning views of the surrounding countryside. The visit includes access to what was one of the largest and most opulent houses in Jacobean England. The gardens have recently been restored to their former glory, and include many interesting features including a fine Robert Adam bridge over the River Cam. The coach departs from Nayland at 10am, and leaves Audley End at 4pm. Further details and booking form are available on page 22 or on www.naylandhortsoc.org.uk.





THE FRIENDS OF CALEY GREEN

Sally Dalton johnansal@live.co.uk 262675

We have made some new temporary No Parking signs for Caley Green. We will start putting them out at the weekends towards the end of May.

We continue to pick up the occasional piece of litter and dog poo. So far we have had many people visit the green, especially over the Easter holidays. Residents and visitors took advantage of the fabulous weather to picnic, paddle board and canoe. Everyone cleared up afterwards and the green was left clean and tidy.

DUCKS SWANS AND GORDON

Congratulations to the meadow pond swans, with seven cygnets and the river swans with six. Both broods hatched roundabout the same time at the beginning of May. Both pairs of parents seem to be attentive and are already instructing their broods on how to survive.

One set of ducklings appeared very early in the spring, but at the time of writing we are still awaiting the return of the females to the green with their ducklings.

In April a female greylag goose appeared on the green, and after a brief getting to know each other period, she returned every day to spend time with our greylag Gordon. He seemed quite smitten and became very protective, running at other wildlife that ventured to close with his neck extended. He even took to the skies with her flying for longer and higher than we had seen before.

The romance now seems to have fizzled out, as it appears that Gordon couldn't make up his mind between her and his own reflection in the bus stop. He is now back at the bus stop admiring his reflection which of course requires much less effort!!



NAYLAND CHOIR

Chair: Rob Swan 07954 334548 rob.swan@tb9.uk
Sec: Cathy Allen cathymargaretallen@gmail.com

www.naylandchoir.org
Twitter at @naylandchoir

Rehearsals have begun for our June concert, *Midsummer Cabaret*. We'll be performing an evening of songs from *Cabaret*, *Chicago*, *Fiddler on the Roof* and others, in Nayland Village Hall on Friday 28th June from 8pm; and we'll be making the most of the summer evening with refreshments. Tickets will be available shortly; see naylandchoir.org for details.



NAYLAND FIRST RESPONSE TEAM

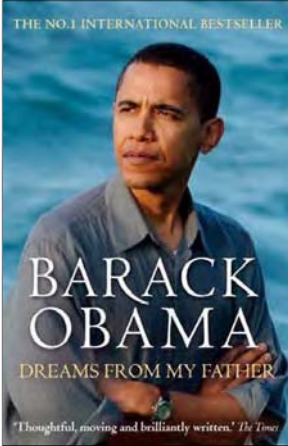
Coordinator: Tracy Le Grys 271553 Mob 07504 118843 tracyb295@googlemail.com

First Responders are volunteers with life-saving skills who attend medical emergencies where they live or work on behalf of the ambulance service. Because they volunteer in their community they can often reach a patient before an ambulance or first response car.

Interested in joining the Nayland First Response Team?

Are you – physically fit, aged between 18-70, have a sympathetic and caring nature and agree to undertake training which is provided by the service. Then this could be for you.

Please contact Tracy Le Grys or view <http://www.eastamb.nhs.uk/join-the-team/community-first-responders>



BOOK CLUB

Jane Barbrook 263619 janebarbrook@hotmail.com

We have recently finished reading 'Hiding from the Light' by Barbara Erskine. This scary story is about witches, witch hunters, ghosts and lost souls. Emma Dickson abandoned her London life to buy a country cottage in Mistley, Essex, which she remembers from her childhood. The cottage is called 'Lisa's Cottage' and is named after an old woman who used to live there and who Matthew Hopkins, 'The Witch Finder General' arrested and tortured under the suspicion of being a witch in the 1660's. This area in Mistley seems to be a centre for paranormal activity and evil - and as the novel progresses the atmosphere builds with ghostly sightings and menace.

We then went on to read 'This Is Going To Hurt' by Adam Kay which is a humorous book with a very sobering message about his years spent as a junior doctor; Adam left the Health Service and is now a stand-up comedian.

Our current novel is totally different. It's by Barack Obama and is called 'Dreams from my Father'.



TABLE TENNIS CLUB

Jane Barbrook 263619 janebarbrook@hotmail.com
Tony Mann 262492 ad.mann@homecall.co.uk

The Table Tennis Group meet every Monday including most bank holidays. New members are welcome to join us. Just come along to the Village Hall on Monday afternoons between 2pm and 4pm. Please ring one of the telephone numbers above for more information. No previous experience necessary!



NAYLAND CINEMA

Karen Freeman karenfreeman@suffolkonline.net Mob: 07773 402765

At the time of writing Nayland Cinema has screened two films since the last edition of the Community Times, 'Stan & Ollie' and 'On the Basis of Sex'. The former was well attended with everyone present fondly remembering the antics of Laurel and Hardy and how their simple slapstick comedy kept the audience laughing. The attendance for the second film was disappointing, maybe due to the title? It was a poor choice of title 'On the Basis of Gender' would have been more appropriate. It was however an excellent, thought provoking film based on the true story of Harvard Lawyer Ruth Bader Ginsburg who was instrumental in revolutionising the American Justice system.

By the time this article has been published we will have screened 'The Green Book' which as a comedy-drama hopefully should be a popular choice amongst the cinema goers.

We have an excellent bar which is available before, during the interval and at the end of the film, so why not stay for a drink and a chance to chat about the film. Other refreshments and ice creams are available. Loyalty cards have been well used.

The Anchor Inn continues to support the cinema with a specially designed voucher with offers that change with every film screening. Their website and up to date information regarding the cinema and future films can be found on <https://www.naylandandwiston.net/cinema/>

For those who have yet to try out the cinema come along, no need to book. Tickets are £5 for adults with 16 years and under only £2. Pick up a loyalty card and every fifth film is free.

Our next films will be:

- **Friday 14th June: 'Loving Vincent' (2017)** The World's first fully painted feature film! Animated biographical drama film about the life of Vincent Van Gogh and, in particular, about the circumstances of his death. In a story depicted in oil painted animation, a young man comes to the last hometown of Van Gogh to deliver the troubled artist's final letter and ends up investigating the artist's final days. Each of the film's 65,000 frames is an oil painting on canvas, using the same technique as Van Gogh, created by a team of over 100 painters. The film won Best Animated Feature Film at the 30th European Film Awards in Berlin and was nominated for Best Animated Feature at the 90th Academy Awards.
- **Friday 12th July: 'Vice' (2018)** is a American biographical comedy-drama which explores the epic story of Dick Cheney, an unassuming bureaucratic Washington insider, who quietly wielded immense power as Vice President to George W. Bush, reshaping the country and the globe in ways that we still feel today.
- **Friday 26th July: 'The Keeper' (2018)** is a British-German biographical film starring German actor David Kross as the footballer Bert Trautmann and tells the extraordinary love story between a young English woman Margaret Friar (Freya Mavor) and a German PoW, who together overcome prejudice, public hostility, and personal tragedy
- **Friday 9th August: 'Sometime Always Never' (2018)** is a comedy, drama, mystery film where Alan (Bill Nighy) is a stylish tailor with moves as sharp as his suits. He has spent years searching tirelessly for his missing son Michael who stormed out over a game of Scrabble. With a body to identify and his family torn apart, Alan must repair the relationship with his youngest son Peter and solve the mystery of an online player who he thinks could be Michael, so he can finally move on and reunite his family
- **Friday 30th August: 'Can You Ever Forgive Me' (2018)** is a 2018 American biographical film. Lee Israel (Melissa McCarthy) made her living in the 1970's and 80's profiling the likes of Katharine Hepburn, Estee Lauder and journalist Dorothy Kilgallen. When Lee is no longer able to get published because she has fallen out of step with current tastes, she turns her art form to deception, abetted by her loyal friend Jack (Richard E. Grant)



HANDBELL RINGERS

Chris Hunt 262014 or Hazel Gardiner 262582

We continue to meet with our tutor most Tuesday afternoons at 1.45 – 3pm in the Church Hall. If you are looking for a new interest do come along; handbell ringing is friendly, fascinating and fun. We also make time for a cup of tea!



VILLAGE PLAYERS

www.villageplayers.co.uk



Chair: Justin Dowding 01206 262217 jpdowding@gmail.com

Thank you to everyone who came along to 'Cash On Delivery', which was directed by Mary Moriarty. The play was great fun to perform and we were delighted to see such large (and appreciative) audiences.

Everyone is very welcome to join us at the Anchor when we meet every other month. Our next meet up will be on Thursday 4th July at 8pm.

We held our AGM in May. The title of the next play has yet to be decided, but the dates for the auditions and performances are fixed.

Auditions will take place at Nayland Church Hall on Sunday July 14th at 5pm and on Wednesday July 17th at 7:30pm. Rehearsals will be on Wednesday and Sunday evenings, starting in September.

Performance dates will be December 5th – 7th.

If you're not already on our mailing list and you would like to know more about the auditions, please get in touch at jpdowding@gmail.com

As always, for more information on the Village Players, including photos of 'Cash on Delivery', details of future productions and tickets to performances, please head to www.villageplayers.co.uk.

Photos from performances of 'Cash on Delivery'





ST JAMES' CHURCHYARD

Come sleet, snow and rain, we were undeterred in our work! Thank you all so much for what turned out to be one of our most productive ever morning's work. Unfortunately Mike Hunter had to leave early, so he is not included in the photo, but we thank him and Chris for all they did in advance and today. Several trailer loads of brushwood and logs were removed. The churchyard has really opened up with the removal of various overgrown shrubs and branches and looks in good heart for the summer.



NAYLAND FUNDRAISING COMMITTEE

Secretary: Caroline Lowe 263852 caroline.m.lowe@btinternet.com

Despite a last-minute change of venue to Loretto, 6 Church Lane our coffee morning on 27th April was a great success and we are delighted to have raised £910 for Ferrier's Barn, Bures.

Everyone who came was able to enjoy a cup of coffee and chat in a lovely venue while also having the opportunity to buy our popular homemade cakes and plants. There was also a gift stall and raffle.

I'd like to thank everyone on the committee and husbands for their hard work and also to Peter Drew who spent 2 hours in the cold advertising the morning outside the butchers. We even had two tourists from Belgium turning up!

Ferrier's Barn, is a day centre for people with disabilities on the outskirts of Bures. Members who attend are given the opportunity to take part in activities in a supportive and sociable environment while their families and carers are provided with essential respite. Activities include woodwork, painting, gardening, mosaics and more general arts and crafts. A two-course meal is provided every day. Thank you to everyone who came and helped us raise funds for this worthwhile and local charity.



THE VILLAGE LUNCH

Jo Murrison 262369

The Village Lunch held on Wednesday 10th April was very successful. There was a full house with eighty people attending and the speaker, Sara Barber gave a most interesting talk on the subject of **'From Fleece to Floor'**. For twenty years Sara has been the owner of the

Persian Studio in Long Melford and is a well known expert in rug making and repairs. She has made many visits overseas to visit the nomads and to learn about the making of the beautiful rugs and Kelams, the rearing of the sheep for their wool, the spinning and dyeing with natural colours and the making before taking their work to the markets in the lowlands. A delicious lunch was then enjoyed.

Thank you to all who support the lunches; a profit of £794 was made for village hall funds. Our thanks to all our excellent cooks and all those involved in making the village lunches so enjoyable.

The autumn Village Lunch will be on **Wednesday 16th October** when the speaker will be Nicholas Charrington on the subject of **'Layr Marney Tower'**. A Tudor palace, built as a statement house in the 1520's by Henry, Lord Marney, Layr Marney Tower is England's tallest Tudor Gatehouse at about eighty feet tall. The Charrington family purchased the property in 1959. The buildings suffered considerable damage from the Great English earthquake of 1884.

Photo: Layr Marney Tower





Woodland Corner

Administrator: Nicola Peachey 263054
e-mail: woodlandcorner@outlook.com

Manager: Cheryl Leeks 263054
<http://woodlandcornernayland.blogspot.com>

Registered Charity
No. 1035330

Thank you everyone for continuing to support our fundraising activities. Our Mother's Day cake sale in the sunshine raised £226. We would like to thank Ivan Kerridge and his team for letting us continue to set up outside their shop. We have been spending our fundraising money on updating our outside area.

Our building is now 11 years old and some things are coming the end of their life! We have replaced the decking, which was a major expense, but should last another 10 years!

We would like to welcome all our new children and their families for both pre-school and extended schools. We have planned an open day with Nayland Primary School on 14th June from 9.30-11.30am and look forward to showing off our wonderful setting.

This term we are learning all about "Growing" as we start our transition activities, preparing some children for school in September, including ready for schools PE, and Maxim Sport visit to run a Little Feet Multi-sports session. We incubated hen eggs and looked after three chicks, which have now gone to live at Colletts Farm. The pre-school children visited the farm with staff and parents, we saw Jersey cows, Long Horn cows, lambs, pigs, and we were able to sample the pork sausages made at the farm by Sophie. We have been finding out about life cycles, our caterpillars will shortly turn into Butterflies. We are planting our vegetable garden, and are learning about where our food comes from. We will grow carrots, radishes, potatoes and sunflowers to name a few.

We would like to thank the crew at Nayland Fire Station for showing the pre-school children how the station works and giving them the chance to use the hose to get 'Fred' wet, sit in the fire engine and try on a helmet, which was really heavy! We even saw a big red elephant!

Our extended schools sessions are extremely busy, the children have been enjoying the sun as and when it comes out! The children enjoy playing on the scooters, playing cricket and football, and exploring our wonderful grounds. Maxim Sports run a football club on Wednesday afternoons which is extremely popular.

Our Maths Open Afternoon was great fun, this gave parents and children lots of new ideas to extend their maths learning at home.

We are now taking bookings for our Summer Holiday Club, please see our advert.

We will have a stall at the Nayland Primary School Summer Fete on Friday 21st June from 3.20pm and hope to see you there. Please let us know if you would like to visit.

Photos: above right the visit to Colletts Farm, below the visit to Nayland Fire Station





NAYLAND BABY & TODDLER GROUP

Leaders: Kate Dunstan 07743 259796 baird_katherine@hotmail.com
Anna Easdon 07826 153023 easdownanna@gmail.com



Nayland Baby & Toddler Group continues to go from strength to strength each week with great attendance and a warm and welcoming atmosphere.

There is a small charge of £3.50 per visit which covers the hall fees and healthy snacks. The session runs from 9:30am until 11:15am every Friday morning during term time in the Village Hall, but you are most welcome to pop in anytime during these hours.

Sadly the current management team are due to hang up their boots at the end of the Summer term which means we are now looking for some new helpers to run this essential community group from the beginning of the new school term in September 2019. The Nayland Toddler Group attracts many local families and carers and is a great place to make new and meet up with old friends. Help is needed to run the weekly group by setting up toys, making tea and coffee and packing away the equipment at the end of the session along with some basic admin tasks. We would love the group to continue and flourish under a new and energetic team. For further information or to volunteer on a weekly, fortnightly or monthly basis, please call us or drop us an email via the details above.



MESSY CHURCH

Churches of Nayland, Wiston, Leavenheath, Polstead, Stoke by Nayland

For further information: Revd Mark Woodrow 262150

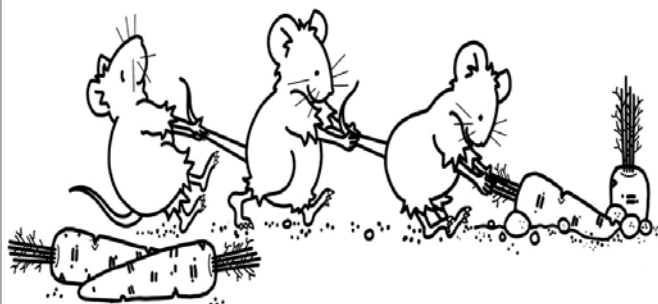
All members of the family welcome for fun art and craft activities, games, stories and singing based around informal worship followed by afternoon tea.

Our next Messy Churches will be on:

- **Sunday 26th May**, the theme is Rogation with lots of messy activities based on growing things
- **Sunday 30th June** which will be our annual BBQ and a Generation Game style challenge!
- We then have our summer break and will return for more messy fun on 29th September.

Messy church will be held at 4pm to 6pm in St Mary's Church, Stoke by Nayland.

Please put the dates in your diary and come and join us - It's church but not as you know it! Suitable for all ages, no pre-registration required.





VILLAGE HALL MANAGEMENT COMMITTEE

Registered Charity No 304 928

Chairman: Iain Wright 263646

Secretary: Christine Thompson 262825



APRIL COMMITTEE MEETING

MATTERS ARISING & HOUSEKEEPING BOOK

- The Comments Book was checked. The dishwasher will be cleaned after an adverse comment was made.
- The Calendar (monthly tasks) was read out.
- The March monthly fire checks were carried out the April checks will be carried out next week.
- Iain Wright has inspected the hall floor,
- The thermostat in the changing rooms will be reprogrammed to avoid the heating there coming on every day.

HALL MATTERS AND MAINTENANCE

- Arrangements will be made this week to have the guttering cleaned and repaired.
- The trees overhanging a neighbouring garden will be cut back on 18th April.
- Lock Electrical have been asked to replace the florescent tubes in the kitchen with LED lights.
- The VHMC discussed the damage to the Football Pitch caused by cars being driven onto it. The Football Club will be compensated for the repair work that was necessary and the cost of retractable posts on the edge of the car park will be investigated.

BOOKINGS & WEBSITE

- Recently two hirers booked the Hall and then failed to honour their bookings. It was decided that any single use hirers who are not known to us should be contacted to ensure that if they change their minds, they cancel the bookings. A deposit system was ruled out on the grounds that it would not be easy to administer.
- The Community Times will be asked to add contact details to the list of regular classes held in the Hall.

CINEMA

- The last film, Bohemian Rhapsody, was very well attended.

ROOF REPLACEMENT & FUNDRAISING

- Iain Wright and Tricia Fuller are meeting representatives from Babergh DC at the hall on Thursday 11th April to discuss the plans for the new roof which will be on display there.
- Tricia Fuller has contacted several organisations to ask them for grants towards the new roof. She is preparing a detailed report which some organisations have asked for and is keeping detailed records of their responses.

AOB

- The VHMC are not in favour of a hut being erected on the field to store donations for the Fete.
- The VHMC are delighted that 3 villagers have come forward to be on the committee: Yvonne Swane, Irene & Steve Collins

MAY COMMITTEE MEETING

MATTERS ARISING & HOUSEKEEPING BOOK

- The Comments Book was checked. In response to a complaint the dishwasher has been cleaned and all cups will now be washed in the dishwasher.

- The Calendar (monthly tasks) was read out.
- The monthly fire checks were carried out.
- A broken drain will be investigated.
- Brian May has been asked to check the basin in the gents toilet for a possible leak and the flushing mechanism in one of the toilets. Awaiting a reply.

HALL MATTERS AND MAINTENANCE

- Arrangements will be made to have the guttering cleaned and repaired.
- Iain Wright has contacted Dulux about the new paint work that is peeling.
- An alternative bar shutter will be investigated as the present one is difficult to open.
- Lock Electrical have been asked to see if the timer on the range cooker is repairable. If it is not then a replacement cooker will be needed.
- The new microphone isn't working properly and will be sent back. It will be replaced by the original one.
- The accessibility of the hearing loop was discussed. It needs to be checked before use to ensure the batteries still function.

ROOF REPLACEMENT & FUNDRAISING

- Invoices from the architect & quantity surveyor have been paid.
- Tricia Fuller has contacted several organisations to ask them for grants towards the new roof.
- The Community Council has allocated £10,000.
- The Parish Clerk has been asked to check with the VAT office about the terms of the lease to ensure that the VAT on the project can be claimed back.
- Tricia Fuller has contacted the Community Infrastructure Levy to ask for a contribution. Gill Hilder from Babergh DC will confirm to them that this is an upgrade so is eligible for funds.
- Local fundraising; we have received two donations but we will need support from the Parish. Perhaps those who pledged money for the Post Office might like to support the Hall?

BOOKINGS & WEBSITE

- It was agreed that if any equipment is loaned out of the hall, all members of the VHMC and the Spooners should be asked by email first.
- 1 licence had previously been signed.
- The website is working well.

AOB

- A photo taken of a car that is frequently parked on the field was shown to the committee. The owner will be asked to move it.
- The trees overhanging a neighbouring garden have been cut back but not satisfactorily. The PC will be contacted.

TREASURER'S REPORT

- COIF Endowment £14,708, COIF £19,153, Bank £4,084, Cash £206, Assets £14,942.
- There was a deficit of £1469 in the first quarter but the year's insurance was paid and there were two oil deliveries.

NEXT MEETING

- The next meeting will be on **Monday 3rd June** at 7.30pm in the Meeting Room.

CLASSES & GROUPS IN THE VILLAGE HALL

- Mondays: 9.30 Acrylic Painting, 2pm Table Tennis
- Tuesdays:
- Wednesdays: 10am Fun Dancing, 7pm Carpet Bowls Club
- Thursdays: 10am Supple Fit, 11am Active Fit,
- Fridays: 9.30am Baby & Toddler Group, 11.45 Zumba Gold Fitness

Further details of these classes are available on the village hall bookings website via www.naylandandwiston.net.

VILLAGE HALL ROOF FUNDRAISING

In the April Community Times Iain Wright wrote an article about the VH roof project in which he asked for any cheques/donations to be made out to the VHMC and sent to our treasurer.

We have since been informed by Babergh DC that this they should be made out to Nayland with Wissington Parish Council and sent to the Parish Clerk, Debbie Hattrell 12 Hitchcock Place Sudbury 10 1NN

Garden Notes *by The Old Muckspreader*



The rain came at last, a really decent soak; not enough, of course, but at least relief from what was looking like a spring drought.

The roses mentioned in the last issue have all reacted favourably to their hard pruning, putting up good strong growth and a 40 year old Peace has also produced new growth from old wood

All the spring flowering shrubs have produced masses of blossom here, by far the best display for some years and the latest one to appear is Syringa Microphylla, the dwarf Lilac.

As the name describes it has small leaves, and the whole plant rarely exceeds 6 feet in height (very well – if you must, two metres). It is difficult to propagate unwilling to strike from cuttings and lacking the habit of the large Lilacs of suckering all over the place.

Last month we talked of plants that will grow in dark places. By contrast there are some that will delight in a hot, dry situation, an equal problem that may well become more common in the future. Most of them will have felty leaves like the Verbascums (Mulleins) and the most common is probably Lychnis Coronaria. Here it has established itself in an open situation, but near a huge Macrocarpa whose roots have taken all moisture from the soil. There is a white variety, but mostly the flowers are red. Other examples are Stachys Lanata, and most of the hardy Geraniums, though the latter do not have woolly leaves.

For those gardeners (mostly masculine) whose area of responsibility is the lawn, now is the best time to carry out repairs. Though many, including to the OM/S' surprise, Monty Don, will go to the trouble of digging up the bare patch and sowing fresh seed, this is not the best, or even the easiest solution. At worst it will produce an area of grass totally different from the rest of the lawn. Many years ago the OM/S' father refused to listen to advice from the rest of his family and a large patch in the centre of what had once been a grass tennis-court was known, to his fury, as The Cricket Pitch. Instead, find some large weeds growing adjacently (no shortage of such at M/S Hall) and fill up the bare patch with them; for good measure scatter some lawn mowing as well.

On a recent visit to John Smith in Sudbury the OM/S came away with the usual haul of well grown plants. Among these were some Diascias. They are a very useful small annual and last time he grew them they flowered more or less non-stop until the first frost of winter.

By the time this issue is published the annual Church Fete will be upon us, and the OM/S will no longer have been seen at the Plant Stall. After about 50 years he has thrown in the towel.

WORDSEARCH: Summer Flowers

E	A	V	A	D	I	C	T	A	M	N	U	S	X	S	A
N	S	S	C	J	W	O	I	Q	O	B	A	S	I	G	D
O	O	E	I	E	O	T	R	U	S	S	S	R	W	Y	R
R	I	U	N	O	N	S	P	I	I	O	I	E	T	E	A
S	B	N	O	A	P	E	T	L	T	P	L	A	D	J	N
E	A	A	R	R	N	T	A	E	A	U	A	M	A	U	O
T	C	T	E	P	E	C	Z	G	P	K	T	O	H	H	M
O	S	G	V	T	O	A	S	I	H	R	I	T	L	A	M
A	W	Y	S	R	J	W	N	A	A	K	G	U	I	L	U
T	T	E	E	O	E	O	R	R	W	S	I	A	A	B	I
S	Z	M	U	I	N	I	H	P	L	E	D	O	U	V	L
O	E	O	B	A	S	T	E	G	R	U	O	N	E	R	L
H	O	N	E	Y	S	U	C	K	L	E	S	E	P	X	A

CRYPTIC CLUES: Annual Flowers

- 1 AWTESEPE 2 words
- 2 NIPFACNOPROIPLAY
2 words
- 3 LEWNOSRUF
- 4 PRKALRUS
- 5 LIGLANE
- 6 NOWOFCRLE
- 7 NUHISDTA
- 8 OBASISUC
- 9 TAGIODE
- 10 PSOCOIRSE
- 11 RATRINMINUH
- 12 RANSTUTUMI

ALLIUM	DIGITALIS	LUPIN
AQUILEGIA	GAURA	MONARDA
ASTRANTIA	HEMEROCALIS	ROSA
DAHLIA	HOSTA	SCABIOSA
DELPHINIUM	HONEYSUCKLE	SEDUM
DICTAMNUS	IRIS	VERONICA

Wordsearch words may be horizontal, vertical, or diagonal and forward or backwards
Solutions on page 46

SOME MEMORIES OF WISTON

Betty Rudge, who was born in 1926 in Rushbanks Cottages, has written her life history and has many memories of living with her family in Wiston. She was the 5th child of 6, having four sisters and one brother. Her parents, Robert (known as Bob) and Elizabeth Eyles, moved to Wiston from London because of her father's health. Bob had fought in the trenches in France during World War I and suffered gas poisoning and later tuberculosis, then known as consumption. In the early 1920s his health deteriorated and he was advised to move near to the East Anglian Sanatorium at Wiston founded in 1901 by Dr Jane Walker who was a pioneer in the study of tuberculosis.

Dr Walker had bought Rushbanks House and Farm, and the farm workers' cottages opposite were used by workers at the "San". One of the four cottages was fortunately vacant and Bob and Elizabeth moved in with their three children, Maisie, Dot and Vi, their only son Bob was away in hospital. Betty was born there not long after. Bob worked part-time as a carpenter at the San, paying 2s 6d rent for the cottage. During times of illness he stayed in the San which consisted of the Upper Block for children, the Central Block for women and Maltings Farm for men. Maltings had raised wooden buildings separated into small individual rooms and it was here that Bob went when he was ill. Despite being given only three months to live in 1924 he survived until 1950.

Betty wrote: "Mum was a town person but adapted to country life, plucking chickens, skinning rabbits, looking after the pigs, digging the garden. She was a good cook and worked hard. She had a copper laundry tub heated with wood and coal for boiling sheets and a big wooden mangle in the garden shed. We children helped to hang out the washing in the garden and ironing was done with solid metal irons heated on the range. Clothes were dried in front of the fire on lines of string though the lines often broke under the weight. Mum sometimes cycled to the shops in Nayland but the baker, butcher, grocer, oilman and fishmonger also delivered. If the family was out the door was always left open and the tradesmen would leave their wares and any change."

RUSHBANK COTTAGES. "The cottages were originally two pairs of semi-detached cottages with an alleyway between. Downstairs there was a living room, scullery and pantry and two bedrooms upstairs. A cast iron range in the living room was used for cooking and heating and we girls had to polish it with black lead every day. Coal was used to heat the range but when Dad was in the San we collected wood from the meadows.



Betty age 17

Mum could not afford coal when she only had 11 shillings per week sickness benefit although she also received a £1 voucher each week from the British Legion to use at Walton's grocery shop in Nayland."

"Dad worked hard to improve the cottage. The original kitchen was shared with neighbours and he built an extension for a kitchen/wash area. Our bath was a tin one which we put in front of the range fire.

The pantry was later converted to a bedroom. Upstairs my four sisters and I slept in the front bedroom in a double brass-knobbed bed – three at the top of the bed and two at the bottom". Occasionally their many relatives and friends from London visited and Betty said it was difficult to imagine how they all fitted into such a tiny space.

"In later years because of the overcrowding, four more rooms were built in the gap between the cottages. We then had two new rooms downstairs and our neighbours had two upstairs. We had a long garden and we all helped Dad to do the digging. We grew vegetables, fruit and flowers. If cows got into the garden and ate the vegetables Dad would make us raid the farmer's fields for replacements though we were scared of being caught. Dad kept two pigs and the butcher from Nayland attended to the slaughtering and cutting up and the bacon was hung to dry. He also kept rabbits and chickens, a cockerel was killed for Christmas. A small wooden building in the garden was our only toilet. All our water had to be collected in buckets, originally from a spring fed pipe opposite the cottages. Later a standpipe was fitted and in the 1950s a water tap was fitted behind the cottages. Water was heated on the range but it took a while and I remember all of us trying to wash in the mornings in a bowl of often cold water."

"I remember dark winter evenings, sitting listening to the radio by the light of an oil lamp. Sometimes we were allowed to stay up late to hear Gracie Fields sing. We also had an old wind up gramophone with a big speaker horn. Dad taught me to play an old accordion and he played the harmonica and sang".

"In winter when there was snow and ice our bedrooms were freezing. We had only one stone hot water bottle between us but we also heated bricks in the range oven, wrapping them up to put in the bed. We didn't have many toys but Dad made us hoops to roll downhill and a wheelbarrow in which we gave each other rides. At Christmas we had tangerines, nuts and sweets. Our pocket money was mostly spent on sweets from Smy's sweet shop in Nayland or from the hospital shop down the road [now Pound House]. Cookie who made his own ice cream in Nayland sometimes came by on his motorbike and side car."

"We made our own amusements, enjoying the freedom of the countryside, playing in the meadows and woods, beside the river, sometimes going to the mill and back by boat. We played in the hayloft of Creems Farm where Mrs Withers lived. There were group outings by charabanc and once a year there was a church outing to Clacton. Sometimes we went fruit and potato picking with Mum to help earn some money."

To be continued....

Wendy Sparrow, Parish Recorder



Rushbanks Cottages

Calendar



St James' from Alston Court, Mike Almond



Nayland Fireworks, Mike Hunter



Nesting Swan by the Weir, Trevor Smy



Nayland 10k runners at Caley Green, Luke Rumbelow

The photographic competition to generate images for the 2020 Nayland with Wissington Calendar took place on 8th May. There were 128 beautiful scenes submitted, making selection of just twelve scenes and a cover very difficult indeed.

This year we asked visitors to the display to select their 12 favourite photographs and cover image to include in the calendar and this seemed to be a very popular idea with over 60 of you carefully studying all the images before making your choices. It was not an easy task choosing just 12 scenes from so many lovely photographs!

The photographs selected were submitted by Julie Clark, Nicola Thorogood, Joanna Petersen, Graham Wiles, Antony Day, Mandy Cook, Brian Sanders, Lorraine Brooks, Hazel Gardiner, Sally Dalton, Adrian Szabo, Wendy Sparrow and Phil Border.

You will have to wait for the calendar to see the selected entries but shown here are an example of the other delightful images submitted and on show at the exhibition. As hoped entries represented the different seasons with our range of weather conditions, from glorious sunshine to mist and snow. Locations ranged from village activities and events such as the Nayland 10K Fun Run, Church Fete, Open Gardens and erecting the village Christmas tree to parish landmarks, such as St James' and St Mary's churches. There were a variety of street scenes, views of the meandering river Stour, the countryside and farming views and some interesting architectural and natural features including the remains of the Mill wheel at Wiston and a vintage tractor parked outside the Surgery. Several people managed to capture spur of the



Nayland 10k runners at the allotments, Will Hitchcock



Rooftop view, Andora Carver

Competition

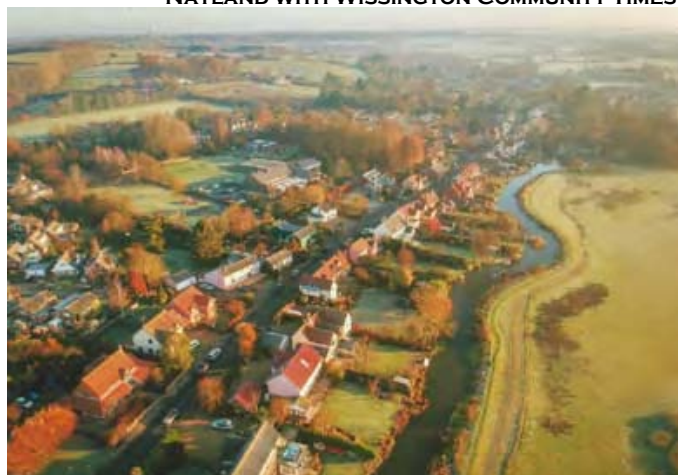
moment scenes, and our feathered residents - the ducks, swans and Gordon, our resident goose on Caley Green.

The images selected for inclusion in the calendar are now being inserted in the village calendar which will be on sale at the Nayland 10k on 30th June and the Flower Show on 4th August.

In the meantime, don't forget to keep your cameras to hand to capture scenes for next year's competition.

View these images in the colour version of the Community Times at www.naylandcommunitycouncil.org.uk on the Community Times page.

NAYLAND WITH WISSINGTON COMMUNITY TIMES



Aerial view of Bear Street, Adrian Szabo



Sunset over Nayland Meadow, Adrian Amos



Reflections at Mill Lade, Harold Miller



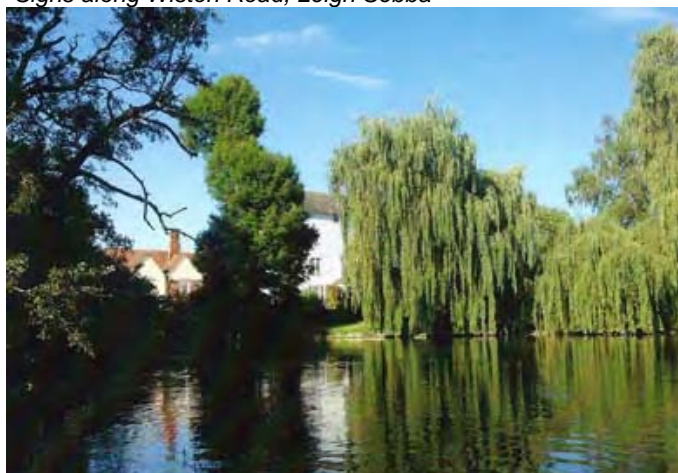
Field of Remembrance, Brian Sanders



Signs along Wiston Road, Leigh Sebba



Nayland Fete, Richard Elston



Wiston Mill from the river, Karen Freeman



FIVE PARISHES CHURCH SERVICES: JUNE & JULY

Nayland, Wiston, Leavenheath, Stoke by Nayland & Polstead

<i>Date</i>	<i>Time</i>	<i>Venue</i>	<i>Service</i>	<i>Priest / Leader</i>	<i>Time</i>	<i>Venue</i>	<i>Service</i>	<i>Priest / Leader</i>
26th May <i>Easter 6</i>	8.00am	Polstead	HC 2	Rev'd Mark Woodrow	10.00am	Stoke	MP	David Rowe
	10.00am	Nayland	HC 1	Very Rev'd Joe Hawe	4.00pm	Stoke	Messy Ch.	Messy Church Team
	10.00am	Leavenheath	HC 1	Rev'd Mark Woodrow	6.30pm	Wiston	Evensong	David Pryor
2nd June <i>Easter 7</i>	8.00am	Nayland	HC 2	Rev'd Mark Woodrow	12.noon	Nayland	Baptism	Rev'd Mark Woodrow
	10.00am	Polstead	HC 1	Rev'd Mark Woodrow	3.00pm	Wiston	Rogation	Derek Johns
	10.00am	Leavenh. VH	First Sunday	First Sunday Team	6.30pm	Stoke	Evensong	Jane Addis
9th June <i>Pentecost</i> <i>(Whit Sunday)</i>	8.00am	Stoke	HC 2	Rev'd Mark Woodrow	6.30pm	Nayland	Evensong	Rev'd Valri Armstrong
	10.00am	Polstead	Ben. Pentecost	Rev'd Mark Woodrow				
16th June <i>Trinity Sunday</i>	8.00am	Wiston	HC 2	Rev'd Mark Woodrow	10.00am	Nayland	MP	Kathy Hunt
	10.00am	Stoke	HC 1 & Bapt	Rev'd Mark Woodrow	6.30pm	Leavenh. VH	Ev Praise	Evening Praise Team
	10.00am	Polstead	family@polstead	Family Service Team				
23rd June <i>Trinity 1</i>	8.00am	Polstead	HC 2	Rev'd Mark Woodrow	10.00am	Stoke	MP	Jane Addis
	10.00am	Nayland	HC 1	Rev'd John Fowler	6.30pm	Wiston	Evensong	Rev'd Mark Woodrow
	10.00am	Leavenheath	HC 1	Rev'd Mark Woodrow				
30th June <i>Trinity 2</i>	8.00am	Stoke	HC 2	Rev'd Mark Woodrow	4.00pm	Stoke	Messy Ch.	Messy Church Team
	10.00am	Nayland	family@nayland	Family Service Team	6.30pm	Leavenheath	Evensong	David Rowe
7th July <i>Trinity 3</i>	8.00am	Nayland	HC 2	Rev'd Mark Woodrow	10.00am	Wiston	MP	Derek Johns
	10.00am	Polstead	HC 1	Rev'd Mark Woodrow	6.30pm	Stoke	Evensong	Jane Addis
	10.00am	Leavenh. VH	First Sunday	First Sunday Team				
14th July <i>Trinity 4</i>	8.00am	Stoke	HC 2	Rev'd Mark Woodrow	10.00am	Polstead	MP	Rev'd Valri Armstrong
	10.00am	Wiston	HC 1	Rev'd Canon Tim Jones	6.30pm	Nayland	Evensong	Kathy Hunt
	10.00am	Leavenheath	MP	Jim Bond				
21st July <i>Trinity 5</i>	8.00am	Wiston	HC 2	Rev'd Mark Woodrow	10.00am	Nayland	MP	Kathy Hunt
	10.00am	Stoke	HC 1	Rev'd Valri Armstrong	6.30pm	Leavenh. VH	Ev Praise	Evening Praise Team
	10.00am	Polstead	family@polstead	Family Service Team				
28th July <i>Trinity 6</i>	8.00am	Polstead	HC 2	Rev'd Mark Woodrow	10.00am	Stoke	MP	David Rowe
	10.00am	Nayland	HC 1	Rev'd John Fowler	6.30pm	Wiston	Evensong	David Pryor
	10.00am	Leavenheath	HC 1	Rev'd Mark Woodrow				
4th August <i>Trinity 7</i>	8.00am	Nayland	HC 2	Rev'd Mark Woodrow	10.00am	Wiston	MP	Derek Johns
	10.00am	Polstead	HC 1	Rev'd Mark Woodrow	6.30pm	Stoke	Evensong	Jane Addis
	10.00am	Leavenh. VH	First Sunday	First Sunday Team				
11th August <i>Trinity 8</i>	8.00am	Stoke	HC 2	Rev'd Mark Woodrow	10.00am	Polstead	MP	Rev'd Valri Armstrong
	10.00am	Wiston	HC 1	Rev'd Mark Woodrow	6.30pm	Nayland	Evensong	Kathy Hunt
	10.00am	Leavenheath	MP	Jim Bond				

Key: FC : Family Communion, HC 1 : Holy Communion Contemporary, HC 1 : Holy Communion, HC 1tr : Holy Communion Traditional, FS : Family Service, PC : Parish Communion, MP : Morning Prayer, MW : Morning Worship, MS : Morning Service, EP : Evening Prayer, Ev Praise : Evening Praise, *Note: Worship leaders may be subject to change*

Other Dates for your Diary

Monday 27th May **Nayland Church Fete**, Webb's Meadow 1-4pm [See page 11]

Sunday 2nd June **Rogation Sunday**, annual trailer ride starting from St Mary's Wiston at 3pm [See page 39]

Other Services and Groups

MESSY CHURCH

Messy Church is held on Sundays (usually the last Sunday) at 4pm-6pm. Messy Church will be held on 26th May & 30th June (with BBQ) at St Mary's Church, Stoke by Nayland. We then break for summer and return on 29th September See page 32 for further details.

COFFEE, CAKE & CONVERSATION: Wednesday Mornings 10am to Noon at St James. Join with us for Coffee, Tea, Cakes and Conversation in an informal atmosphere with others from our local community. Everyone Welcome from 0 to 100+ years!

WEEKDAY PRAYER: Morning Prayer is held on Tuesdays at 8.30am at St Matthew's Leavenheath. All are welcome.



Dear Friends,

A couple of years ago I was given a copy of Simon Jenkin's book 'England's Cathedrals'.

In this book, the author visits all 42 Anglican diocesan Cathedrals in England, plus Westminster Abbey and a selection of Roman Catholic Cathedrals. He awards stars to each, with, he admits, mixed emotions, as everybody appreciates different styles and ages, and are therefore bound to disagree with many of his views!

The book has caused us to decide to try to visit all the Cathedrals in the book. With my just slightly competitive nature, we take photographs of each one, and tick it off in the book, only stopping to fire an e mail to friends who are also doing the same in a 'Ah! Another one ticked off!' way.

What it has done is twofold; firstly, it has taken us to parts of our beautiful country which we have not visited before, and, secondly, we have visited some stunning buildings. 24 so far, and another 4 by the time this letter has been published.

However, although some of the best visits have been when the Cathedrals have been full of people; an exhibition, a flower festival, a concert, or best of all, a service taking place in which we can join, there is something immensely powerful about sitting quietly somewhere in the building, allowing yourself time to just think. The visits show us that cathedrals are doing what they are built for, to be a place of Christian worship; places that convey a sense of the spiritual and sacred to all, even those who are not of the Christian faith.

In our little corner of Suffolk, we don't have a cathedral, but we do have five very different churches, each with their own individual characters. Have you visited them all? It is funny that we often travel long distances to visit ancient or interesting buildings, but forget to look at the ones nearest our homes.

I don't have a book to recommend for you to look at (although our churches appear in many august tomes!) but a good place to start is our website: www.naylandchurches.wordpress.com where you can find information about our buildings.

Spend some time in the buildings, enjoy the peace and tranquillity, whatever your beliefs are, use the time to connect with God, worship or give thanks.

However, 'church' is not all about the buildings, beautiful though they are. We offer a wide variety of services on a Sunday, different styles and formats, hopefully there is something that suits all whatever your background or preferences! You may have to travel to another church sometimes but to me that just adds to the experience!

All our church buildings are part of their local communities, indeed some of our services don't even take place in the church – First Sunday is held in the Village Hall in Leavenheath on (you may have guessed!) the first Sunday of each month at 10am.

Many of our churches hold coffee mornings and village lunches either in the church or village hall. There are discussion groups such as 'Wednesday Welcome' in Stoke church on the first Sunday of the month. We have 'Messy Church' on the last Sunday of the month, sometimes in Stoke Church, and sometimes in Stoke village hall.

People come to us for those 'life events' baptisms, weddings and funerals; for those special days like Harvest, Easter, Christmas – all are welcome!

Do come and visit us, either for a service, or just to look. All details about the things that happen in the different churches are available on the website.

Take up the challenge this year – get to know our village churches and the communities that support them!

Jane Addis, Lay Elder

Church News

ROGATION SUNDAY

The annual Rogation trailer ride *[or follow in cars]* will take place on Sunday 2nd June, starting at 3pm from Newtons Farm, Wiston *[on road leading to church]*.

We will 'beat the bounds' from Wiston, up to Shaddelows Farm, Nayland and back blessing the crops, farm animals and river en route and returning to tea and refreshments in the churchyard.

All are very welcome. Why not come along and bring the children on this trailer ride?



CHRISTIAN AID WEEK
12-18 May

Many thanks to all those who delivered the Christian Aid envelopes this year and grateful thanks to you too for donating. It was a great help to us that you deposited your envelopes into the collecting box in the Post Office.

The total of the amount collected will be announced in the next issue.

Nicola Thorogood 01206 262453



PALM SUNDAY

The weather was kind on 14th April for the procession along Nayland Church Lane to the Palm Sunday service at St James' Church.

FROM THE REGISTERS



DEATHS

Howard Wood
Shirley Stiles

BAPTISMS

Edward James Easdown

CHURCH CONTACT DETAILS ON PAGE 47

Priest in Charge:

Revd Mark Woodrow

The Vicarage

Bear Street, Nayland CO6 4LA

01206 262150

revdmarkwoodrow@gmail.com

W: naylandchurches.wordpress.com/

F: [facebook.com/naylandchurches/](https://www.facebook.com/naylandchurches/)

T: @NaylandChurches

COFFEE, CAKE & CONVERSATION



Wednesday Mornings

10am to Noon

St James' Church, Nayland

Join with us for Coffee, Tea, Cakes and Conversation in an informal atmosphere with others from our local community.

Everyone Welcome

WISTON CHURCH PORCH BOOKS

There is a wide selection of good quality, second-hand books for sale in the church porch. **A bargain at 3 for a £1.** Park at Newtons Farm and take a stroll up to the church. You might even see a caramel coloured rabbit en route. Keep quiet though!



DESIGN THE 1K FUN RUN MEDAL - WINNER!

Organisers of the Nayland 10k invited children from Nayland Primary School to design a finishers medal for the Nayland 1k Fun Run! The response was fantastic with the children really showing their creativity with highly original medal designs that really captured the brief - 'What Nayland means to you'. It made judging very difficult!

There could only be one winning design however, and after careful consideration, it was decided that Adam Walker's medal design encapsulated all of the required elements along with a unique style and a creative approach. Adam's winning design will now be branded onto a unique wooden medal and awarded to all those taking part in the 1k Fun Run.

Nayland Primary School Headteacher Raegan Delaney said: "We are so pleased to be involved in the Nayland 1km Fun Run. It is an excellent opportunity to improve children's fitness, raise some money for our school and, most importantly, have fun!"

On Sunday June 30 this exciting multi-terrain run is back for its third year and is proving more popular than ever. To secure your place on the 1km, 5km or 10km you can enter online at: nayland10k.co.uk

SESAW Open Day & Fun Dog Show

at Stoke Road, Leavenheath, CO6 4PP

Sunday 28th July, 10-4pm.

Games, gift and craft stalls, refreshments marquee, homemade cakes, plants, tom bola, BBQ, big raffle, music from Hadleigh Ukulele Group, lots of dog show classes and a special SESA W Dog of the Year category for pooches re-homed by SESA W.

All welcome, adult entry £1, children free.

All proceeds to Suffolk and Essex Small Animal Welfare Reg. Charity No. 1124029

Nayland Choir invites you to



8pm, Friday 28 June 2019

Nayland Village Hall

tickets £15 incl refreshments

naylandchoir.org

NO CENTRAL HEATING IN YOUR HOME?

Cold homes are not just uncomfortable to live in, they can have a negative effect on health. In Suffolk there are still a large number of houses that do not have a central heating system with a boiler and radiators.

- First time central heating systems available to Suffolk residents*
- Up to 100% fully funded gas and oil systems
- For privately owned and privately rented households
- Council backed scheme run by Suffolk Warm Homes Healthy People

Call local rate telephone 03456 037 686 - Email: whhp@eastsuffolk.gov.uk

For more information visit www.greensuffolk.org/whf

*Eligibility criteria apply. To find out if you are eligible either complete the online enquiry form on the website or telephone/email us using the details above.

*Learn to swim the
Mini Swimming way!*

Fun and engaging swimming classes for
children from 6 weeks to 10 years old.

Join us at: **Gladwins Farm, A134, Nayland**
Call 01376 340310 or email: suffolk@miniswimming.co.uk



**MINI
SWIMMING**

VILLAGE PLAYERS' 'CASH ON DELIVERY'



When it came to providing laughs and surprises The Village Players' production of Michael Cooney's *Cash on Delivery* was right on the money.

This frantic farce about a man's ever more entangled attempts to extricate himself from two years of multiple benefit frauds by killing off the numerous non-existent lodgers and their innumerable family members he was claiming benefits for was delivered with speed, panache, precise timing and a lightness of touch by a talented cast of ten totally committed to entertaining their enthusiastic audience.

The play, presented nightly at Nayland Village Hall from Thursday April 4 to Saturday April 6, was a tour de force with the Players entering enthusiastically into the entertainingly implausible plot so that the audience was able to suspend their disbelief and enjoy the madcap goings-on to the full.

For a farce to succeed it has to be slick, non-stop action set against a tenuous plot but however bizarre the story gets there has to be just the modicum of reality and the possibility that it could just happen and this production managed throughout to do just that.

And it did so by the superb presentation of a very wordy script which was permanently going off at a tangent being delivered in a word-perfect fashion.

Of course, a farce always benefits from near slapstick comedy – and this production had plenty of that.

There was the 'body' dumped in a window box then stretched off-stage covered in a sheet only to be, apparently, brought back and subjected to all sorts of mishaps including being dumped face down on the stage (I was afterwards assured that it was in fact a very lifelike dummy corpse, if you see what I mean).

Then there was the inexplicable marauding washing machine blowing bubbles everywhere and attempting to launch itself on to the stage (I was expecting its malfunctions to be something to do with having the ill-gotten gains from the benefit frauds having been hidden inside leading to blatant references to 'money laundering' but that was not in the script - despite the suggestion given in the very clever cartoon on the front of the programme).

We had, too, the inevitable transvestite cavortings of one male character, the re-appearance of a very lively 'corpse' and someone who should have been deaf hearing through a door - "he has very good eyesight," we were told.

But alongside all the fast and furious visual capers this was a play with a very complicated and demanding script which had to be precise and delivered with conviction and aplomb to succeed – and succeed it did.

Particularly impressive was John McCarroll as Eric Swan, the man who caused the mayhem with his fraudulent benefit claims, who was rarely off-stage, juggling problem after problem with

increasingly panicky and inventive explanations.

A nicely bemused and bewildered Mark Russell was Norman, his lodger, who gets drawn into trying to cover up the scams, particularly when gullible jobsworth benefits inspector Mr Jenkins (played with temerity and confusion by Justin Dowding) arrives and from then on its mistaken identity all the way with Swan having to take on the guise of a gout-ridden former lodger, Norman becoming his own fictitious son and then Swan's partner in crime Uncle George (a suitably doddering and bewildered Jim Bond) who gets twice smashed in the face by a door and apparently dies on the sofa being introduced as Swan himself.

Emma Wallis was initially the most 'normal' of the characters as Swan's wife until she arrives with Dr Chapman (Mark West as a shrink trying to explain her mistaken belief that her husband is a cross-dresser after finding hidden women's clothing which was in fact part of the proceeds of the benefit frauds) when she became almost hilariously hysterical and obsessed.

Swan's report of Norman's death also brought on to the scene a strait-laced do-gooding Rebecca Pentney and upright and confused Charlie Erith as undertaker and assistant trying to sort out not one but two reported deaths in the house (one from Lhasa fever).

With jobsworth Jenkins' inability to sort out Swan's fraudulent activities, eventually his forthright and fearsome boss Ms Cowper (an extremely assured and articulate performance by Jackie Grant) arrives only to be mistaken by Swan as Norman in women's clothing and given a totally inappropriate groping (getting out of that one as 'a physical manifestation of Tourette's Syndrome' was probably the most tortuous of his improbable excuses).

To round it all off, enter Norman's about-to-be bride (a sweetly naïve Emily Adkinson) whose reaction scream when she realised she was being told her fiancé was dead had to be heard to be believed.

However it all came out in the wash as Swan decides he can worm his way out of the situation no longer and confesses his crimes expecting to be put in prison only to be told by the wily Ms Cowper that if he could get away with his monstrous deceptions for so long rather than prosecute him she would employ him to chase down other benefit frauds.

I have to commend director Mary Moriarty for a highly entertaining and diverting production and all the backstage team led by stage manager Nick Moriarty on a very busy set (as with all farces there were doors everywhere for cast members to dive into – all well used including the one which became unhinged as it knocked out Uncle George, much to the general amusement among the audience, and was industriously repaired during the interval).

Chris Mills

JANE WALKER FC CHARITY MATCH

Sunday League teams from the 1980s-2000s, Jane Walker FC and Bures Three Horseshoes FC, dusted off their football boots and limbered up on 6th April to raise money in remembrance of Pat Day and his fight against Pancreatic Cancer. Pat had been the manager of Jane Walker FC.

The intensity and rivalry between these teams on the pitch



had always been fierce, but post-match socialising was equally convivial.

The players led by Danny Kemp (Jane Walker) and Chris Scanlan (Bures) organized the event with Kerrie Day, Pat's daughter.

The match may have resulted in a 3:0 win for Bures, but there was no animosity once these somewhat mature players soothed their aches and retired to the Three Horseshoes for refreshments and to reminisce on past wins, defeats, near misses and footie banter.

The football match, a raffle - for a signed Colchester United FC shirt and a football signed by Julian Dicks, a past West Ham FC player - and a kind donation from the Three Horseshoes public house raised the fantastic amount of £1,000 for Pancreatic Cancer UK. They are leading the fight for this tough, difficult to diagnose and treat disease.

Well done to everyone who participated.

Above: Jane Walker FC Players through the years, Left: Pat Day's granddaughter Bonnie with the cheque for Pancreatic Cancer UK.

KENNY'S SESAW NEWS



By the time you read this, our new paths should be installed ready for the SESAW Open Day on Sunday 28th July. Several companies plan to spend a day helping to prepare the Sanctuary for this annual event when new and old

friends new visit us. Many bring their pooches to enter the Fun Dog Show, those that we re-homed can enter the SESAW Dog of the Year class. It is always a happy day full of good fun, food and entertainment. The Hadleigh Ukulele Group are making a welcome return, the musicians proved very popular last year.

Readers might also enjoy the Eight Ash Green Music Festival at Fordham Heath, CO3 9TQ on Saturday 20th July. This is a great day out with lots going on (including a SESAW stall). More information can be found on the internet or our website.

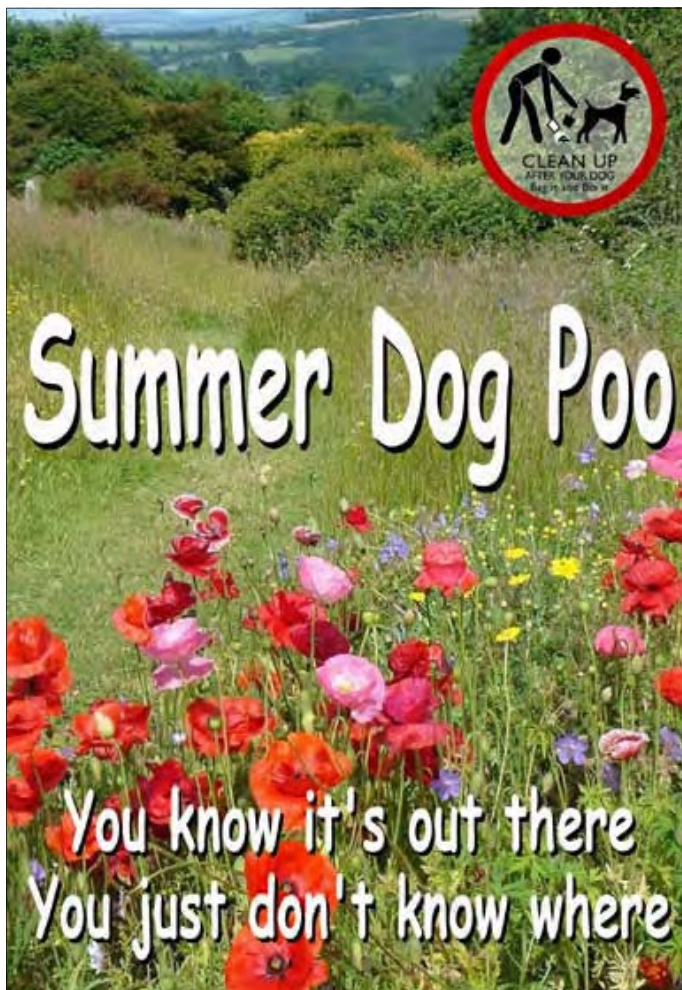
Although we always have lots of dogs awaiting new homes, Ollie wants me to mentioned two cats he told you about last time. They are Betty, a black cat and a pretty tabby and white called Fat Cat. Please don't be put off, she does **not** have a weight problem. They came in last May when their owner died and need a quiet adult-only home as they are very timid. Can you offer them the love and time they deserve, maybe a new name too?

I'm off to check on the work going on in the garden. If there is any wet concrete, it will be incomplete without a few paw prints from me, **Kenny (the Boss) Chihuahua!**

Suffolk & Essex Small Animal Welfare (Reg Charity No. 1124029)

Stoke Road, Leavenheath, CO6 4PP - Open 10-1pm Thurs-Sun

Tel: 01787 210888 www.sesaw.co.uk



SALTER & SALTER
· INTERIORS ·
KITCHENS · BEDROOMS · BATHROOMS · LIVING SPACES

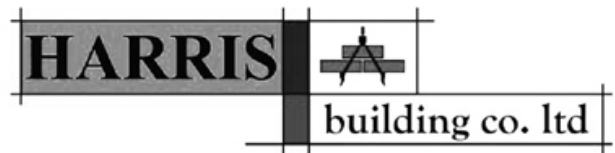


NOW OPEN

INTERIOR DESIGN SPECIALISTS
BESPOKE KITCHENS & FURNITURE

Showroom located in The Mill, Mill street, Nayland, CO6 4HU

Tel: 01206 616684 • www.salterandsalter.co.uk



We are a local building company with many years experience working on new and period country houses and cottages.

.....

For new build, conversions, maintenance, repair and joinery, for design and construction and for planning and listed building applications

.....

Telephone us on
Nayland (01206) 263632

Or email
info@harrisbuilding.net
and you will find us at
www.harrisbuilding.net

MR. WHEELER
— Since 1893 —

Visit our specialist wine cellar today!

NOW OPEN

Wednesday to Saturday, 10am to 6pm

Offering a selection of high quality wine for entertaining and everyday enjoyment, from small, independent vineyards; **plus** unmissable deals on a great range of fine wine.



visit www.mrwheelerwine.com or call 01206 713560

Mr Wheeler's Wine Cellar is our shop in Dedham.
Birchwood Farm, Birchwood Road, Dedham, Essex CO7 6HX

we choose better wine™

WHITTLES
CHARTERED ACCOUNTANTS



**Sound, clear advice
Personal, practical approach**

Business advisory, tax, audit and accounting services for companies, charities, trusts and individuals.

COLCHESTER OFFICE
The Old Exchange, 64 West Stockwell St, Colchester CO1 1HE
T: 01206 762200 E: mail@whittles.co.uk

WEST MERSEA OFFICE
15 High Street, West Mersea CO5 6QA T: 01206 385049 E: mail@whittles.co.uk

www.whittles.co.uk



Print from
yoursofa.co.uk

Playing Cards - NO MINIMUM ORDER
We can print you ONE PACK!

Professional, High Quality Playing Cards,
with Your Photos Printed on Them



only
£9.95
for just
1 PACK!

Personalised with **1 photo on back**
and standard playing card faces

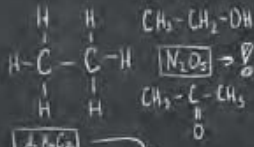


only
£12.95
for just
1 PACK!

Personalised cards with up to
55 different photos through the pack!

Incredibly Easy - Design Yourself Online
and collect from our office within a week!

01206 262751 • hello@printfromyoursofa.co.uk
The Studio, Harpers Hill, Nayland, CO6 4NT



Simplifying property
since 1966

$$\begin{aligned} \omega(A) &= \frac{w \cdot A_r(A)}{M_r(A_r B_r C_r)} \Rightarrow x = \frac{\omega(A) \cdot M_r}{A_r(B)} \\ \omega(B) &= \frac{y \cdot A_r(B)}{M_r(A_r B_r C_r)} \Rightarrow y = \frac{\omega(B) \cdot M_r}{A_r(B)} \\ \omega(C) &= \frac{z \cdot A_r(C)}{M_r(A_r B_r C_r)} \Rightarrow z = \frac{\omega(C) \cdot M_r}{A_r(C)} \end{aligned}$$

$$\begin{aligned} a^2 + b^2 + c^2 &= 0 \\ x_1^2 + x_2^2 + x_3^2 &= 0 \end{aligned}$$

$$r = \frac{2S}{a+b+c}$$

$$\begin{aligned} \ell &= 2\pi R \\ S &= \frac{1}{2} \ell R \\ \ell_{30} &= 2\pi R \cdot \frac{1}{360} \\ S_{30} &= \frac{1}{2} R^2 \cdot \frac{1}{360} \end{aligned}$$

Value your property online
now at boydens.co.uk



FREE
TRIAL LESSON

QUAY
DANCE

The Quay School of Theatre Dance

Classes held in Sudbury
and
Ixworth nr Bury St. Edmunds
Pupils accepted from 3 years to adult

EXAMS • SHOWS
SUMMER WORKSHOPS

For further details please contact:

Mrs Marie Morris A.I.S.T.D. Dip. C.D.E.

Telephone:

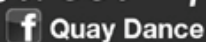
07771 648649

email: quaydance@hotmail.co.uk

www.quaydance.co.uk



Ballet - Modern - Jazz
Tap - Street - Fitsteps



Quay Dance

IMPERIAL SOCIETY OF TEACHERS OF DANCING

SMALL ADVERT COLUMN

Nayland and Wiston residents may place free adverts for items valued at under £50. Items £50 and over incur a charge of £5.

To Advertise Contact: Lorraine Brooks 262807
lorraine.nayland@btinternet.com

WANTED:

POSTAGE STAMPS for East Anglian Air Ambulance. Please leave them in box in the Post Office.

UNWANTED BICYCLES for Re-cycle Bicycles to Africa, www.re-cycle.org. Contact Iris Sebba 262632 or take them to the Re-Cycle Depot: Unit 8 The Grove Estate, Colchester Road, Wormingford CO6 3AJ Tel: 01206 617 865

FOR SALE:

PIONEER DV-737 DVD CD PLAYER, Pure Cinema Progressive, Black, 2 scarts, Digital and Optical out Double stereo out, No HDMI. £30. Nayland 01206 262331

BRIDGESTONE POTENZA 215/45R17 TYRE for sale. New still with manufacturing 'hairs'. Was £75 new. Sell for £30. Nayland 01206 262331

BIKE CARRIER - fits hatchbacks and SUVs with full back tailgates (not saloon boots). Carries two bikes. Around £50 new, yours for £15. Nayland 01206 262331

Hunnaball of Colchester

Family Funeral Service



York House, 41 Mersea Road
Colchester, CO2 7QT

01206 760049

www.hunnaball.co.uk



MARY-ANNE
MORRISON
MILLINERY



INDEPENDENT
MILLINER
Providing a ready-
made and bespoke
service



01206 262391 | 07850 571879

www.mamorrison.co.uk | hats@mamorrison.co.uk



HILL FARM
LANDSCAPES

*Landscaping &
Fencing Contractors*

01206 303608
www.hillfarmlandscapes.com

ST. JAMES' CHURCH HALL HIRE CHARGES

Monday – Friday (Hourly Rates)	£5.00
MINIMUM CHARGE (2 hours)	£10.00
Weekends (Hourly Rates)	£6.00
MINIMUM CHARGE (2 hours)	£12.00

During Winter: Heating Vouchers @ £1 each

Bookings: online at www.naylandandwiston.net
or Andrew Gowen 262534 stjameschurchhall@yahoo.com
Collect Key from 43 Bear Street

NAYLAND VILLAGE HALL HIRE CHARGES (from 1 January 2019)

Includes: Main Hall, Stage, Kitchen, Bar Area and Toilets.
Licence to provide Alcohol: £25 additional fee.

MINIMUM HALL HIRE:
2 HOURS FOR VILLAGE SOCIETIES, 3 HOURS FOR OTHERS

Sunday – Friday Hourly Rates	Residents	Non Residents
9am – midnight	£12.00	£18.00
Meeting Room (minimum 3 hours)	£6.00	£21.00
Playing Field only (all day)	£60.00	£60.00
Changing Rooms (all day)	£25.00	£25.00

Saturday

Daytime until 6pm	Hourly Rates as above	
Evening 6pm-midnight	£140.00	£210.00
Playing Field, Changing Rooms & Meeting Room	Hourly Rates as above	

Reduced rates for regular users can be negotiated with the Treasurer, Peter Mann on 262830

Bookings: online at www.naylandandwiston.net or
Booking Sec 07748 953175 naylandvillagehall@yahoo.co.uk
c/o Nayland Village Hall, Church Lane, Nayland, Colchester. CO6 4JH

NAYLAND WITH WISSINGTON COMMUNITY TIMES WORDSEARCH

	A		A	D	I	C	T	A	M	N	U	S		S	A
	S	S	C				I	Q						I	D
	O		I			T		U		S	S	R			R
R	I		N		N			I	I		I	E			A
B		O	A					L			L		D		N
A		R					A	E		U	A		A	U	O
C	T	E				C		G	P		T		H		M
S		V		O			I			I		L			M
A				R			N	A			G		I		U
T			E								I	A	A		I
S		M	U	I	N	I	H	P	L	E	D		U		L
O	E													R	L
H	O	N	E	Y	S	U	C	K	L	E					A

CRYPTIC CLUE SOLUTION

1 Sweet Pea, 2 Californian Poppy, 3 Sunflower, 4 Larkspur, 5 Nigella, 6 Cornflower, 7 Dianthus, 8 Scabious, 9 Godetia, 10 Coreopsis, 11 Antirrhinum, 12 Nasturtium

USEFUL WEBSITES

- **Babergh Planning:** www.babergh.gov.uk/planning/
- **Refuse Collections:** <https://www.babergh.gov.uk/waste-services/collection-days/>
- **Highways Reporting:** <https://highwaysreporting.suffolk.gov.uk/>
- **To check on roadworks:** <https://roadworks.org/>

Useful local social media group sites:

- <https://www.facebook.com/groups/StokeByNaylandBoxfordLeavenheathNaylandBures/>
- https://nextdoor.co.uk/news_feed/

SCHOOL TERM DATES 2019

May Half Term: 27 May – 31 May
Summer Term ends: 24 July
Autumn Term begins: 4 September 2019

BUS TIMETABLES Service 84 (Sch = Schooldays only, NSch = Non-schooldays only) No service on Sunday or Public Holidays

From 29 May 2018

Sudbury – Newton Green – Assington – Leavenheath – Stoke by Nayland – Nayland – Gt Horkesley – General Hospital – Colchester

Monday to Saturday							NSch	Sch 84A			Saturdays					
Great Cornard School	0655	0915	1025	1125	1225	1325	1500	1630	1730	0715	0915	1025	1225	1325	1640
Sudbury Bus Station	1500	1640
Nayland Surgery	0744	1003	1108	1208	1308	1408	1548	1555	1728	1818	0803	1003	1108	1308	1408	1728
Colchester Gen. Hosp.	0801	1018	1123	1223	1323	1423	1603	1610	1833	0818	1018	1123	1323	1423	1743
Colchester North Stat.	0806	1023	1128	1228	1328	1428	1608	1615	1838	0823	1023	1128	1328	1428	1748
Colchester Osbourne St	0815	1030	1135	1235	1335	1435	1615	1622	1845	0830	1030	1135	1335	1435	1755
Norman Way Schools	0825

Monday to Saturday	NSch	Sch					Sch	NSch					Saturdays					
Norman Way Schools	1550		
Colchester Stanwell St	1440	1450	1605	1750	0905	1035	1140	1340	1450	1750	
Colchester North Stat.	1448	1458	1613	1758	0913	1043	1148	1348	1458	1758	
Colchester Gen Hosp.	1454	1504	1819	1804	0919	1049	1154	1354	1504	1604	
Nayland Surgery	0754	0754	0934	1104	1209	1309	1409	1509	1519	1634	1819	0754	0934	1104	1209	1409	1519	1819
Great Cornard School	0840	0840	1020	1150	1250	1450
Sudbury Bus Station	0840	0855	1020	1150	1250	1350	1450	1605	1720	1902	0840	1020	1150	1250	1450	1605	1902

For more information: Chambers Coaches www.chamberscoaches.co.uk Tel: 01206-769778

LOCAL INFORMATION

COMMUNITY WEBSITE www.naylandandwiston.net

Website manager
Mobile Library
Post Office
Doctors Surgery

Parkers Way
Primary School
Home School Association
Nayland Playgroup
Woodland Corner
Primary School Choir
Baby & Toddler Group
Village Hall
Church Hall
Royal British Legion
Womens Institute
Over 60s Club
Bowls Club
Village Cinema
Table Tennis Club
Nayland Art Club
Horticultural Society
Conservation Society
Village Players
Nayland Choir
First Response
Friends of St. James Church
Friends of Wiston Church
Friends of Caley Green
Chambers Buses
Roman Catholic Church
Local Police
Police Safer Neighbourhood Team
Babergh District Council
District Councillor
Suffolk County Councillor
James Cartlidge MP

Justin Dowding – Tel: 262217 - e-mail: jpdowding@gmail.com
Saturdays 4-weekly alternating between: High Street & Parkers Way. *See page 20 for details*
High Street Tel: 262210 Early Closing on Wednesday
93 Bear Street Tel: 262202 (*out of hours emergency 01206-578070 or NHS 111*)
Surgery hours: Mon-Fri 8am-6pm (*telephone service until 6.30*) www.northhillsurgery.co.uk
Scheme Manager: Ellen Salmon, 15 Samford Close, Holbrook Tel 01473 328458
Head Teacher: Raegan Delaney Tel: 262348
Sec: Kate Field 07747830884 katefield955@gmail.com
Manager: Cheryl Leeks 263054 <http://woodlandcornernayland.blogspot.com>
Administrator: Nicola Peachey 263054 e-mail: woodlandcorner@outlook.com
Jayne Kennedy 262348
Kate Dunstan 07743 259796 baird_katherine@hotmail.com - Fridays 9.30-11.30am Village Hall
Bookings: 07748 953175 naylandvillagehall@yahoo.co.uk Caretaker: Mrs Y. Spooner 262691
Bookings: Andrew Gowen 262534 stjameschurchhall@yahoo.com
Hon Sec. Andrew Gowen 262534 parkersag@yahoo.co.uk
Sec: Lorna Rumsey 01787 211975 – 3rd Monday each month 7.30pm Village Hall
Sec: Barbara Smith 501942 President: Mrs Eva Rolfe 263151 - 2nd Thursday each month
Chair: Mervyn Farthing 01206 851739 mervynpaul@btinternet.com
Karen Freeman 07773 402765 karenfreeman@suffolkonline.net
Jane Barbrook 263619 Tony Mann 262492 Mondays 2pm-3.30 Village Hall
Liz Thorne 262664 - Wednesdays 2-4pm (*term times*)
Chair: Trevor Smy 262022 trevor.smy24@gmail.com www.naylandhortsoc.org.uk
Chair: Mike Hunter 264100 mikejphunter@gmail.com www.naylandconservation.org.uk
Chair: Justin Dowding 262217 jpdowding@gmail.com
Chair: Rob Swan 07954 334548 rob.swan@tb9.uk
Tracy Le Grys 271553 tracyb295@gmail.com Mob 07504 118843
Chair: Alan Edwards 262800 alan@edwards-online.net
Sec: Cath Davison 262654 wistonfriends@gmail.com Ch: Bill Starling 262397
Sally Dalton 262675 johnansal@live.co.uk
Tel: 01787-375360 or 01206-769778 www.chamberscoaches.co.uk
Father Peter Brett 01473 372703 www.sudburywithhadleigh.net
PC 1455 Matt Paisley Tel: 101 (*non-emergency*) number
Babergh East SNT email: babergheast.snt@suffolk.pnn.police.uk
Tel: 0300 123 4000 www.babergh.gov.uk Endeavour House, 8 Russell Road, Ipswich IP1 2BX
Melanie Barrett melanie.barrett@babergh.gov.uk 01787 370139
James Finch James.Finch@suffolk.gov.uk 263649 Rose Cottage, 5 Fen Street CO6 4HT
james.cartlidge.mp@parliament.uk 0207 219 4875 House of Commons, London SW1A 0AA

PARISH COUNCIL	COMMUNITY COUNCIL	VILLAGE HALL COMMITTEE
Clerk: Debbie Hattrell 01787 378649 pc@naylandwithwissington.suffolk.gov.uk 12 Hitchcock Place, Sudbury CO10 1NN Chairman Mary George Vice Chairman - Councillors: Gerald Battye, Patricia Fuller, Laura Erith, Ned Cartwright Parish Recorder Wendy Sparrow Tree Warden Terry Bannister Footpath Warden Sally Bartrum <i>Meetings: 7.30pm second Wednesday of month in the Village Hall Committee Room</i> <i>Minutes: PC notice board in High Street</i>	Chairman Rachel Hitchcock 263169 Vice-Chair Julie Clark Secretary Lorraine Brooks 262807 Treasurer Maggie Ryan President Ken Willingale Vice-President Bryan Smith Executive: Colin Ramsell, Tricia Hall, Individual: Claire Buller, Vicki Sargent, John Parsonson, Luke Rumbelow, Iain Wright, Jo Metson <i>Meetings: 3 July, 4 September, 28 October</i> 8pm Church Hall (Exec 7.30) naylandcommunitycouncil.org.uk	Chairman: Iain Wright 263657 Secretary Chris Thompson Treasurer Peter Mann Bookings Sec. Chris Thompson Committee: Nick Moriarty, Tricia Fuller, Karen Freeman, Yvonne Swane <i>Meetings: first Monday every month (except Bank Holidays: second Monday)</i> No meeting in August 7.30pm Village Hall Committee Room
CHURCH naylandchurches.wordpress.com Priest in charge (<i>five ecclesiastical parishes</i>) Revd Mark Woodrow 262150 revdmarkwoodrow@gmail.com The Vicarage, Bear Street CO6 4LA Benefice Administrator: Nicola Thorogood 262453 nicola.church@yahoo.com Retired Clergy: Revds J Fowler & V Armstrong Readers: David Rowe & Derek Johns Reader Emeritus: Ken Willingale 262531 Lay Elder: Kathy Hunt 262014 Bell Ringers Captain: Chris Hunt 262014	Organists: St James: James Finch St Mary's: Catherine Johns St James Choir: James Finch 262993 Church Wardens St James: Chris & Kathy Hunt 262014 chrisjhunt12@gmail.com St Mary's: Nicola Thorogood 262453 thorogood.nicola@gmail.com or John Branfield 845107 Deanery Synod Reps St James: James Carver 262970 Helen Schalin St Mary's: Rosemary Knox 262224, Derek Johns 845815	Parochial Church Councils St James Lay Chairman: David Pryor Treasurer: Jonathan Pearson Sec: Michael George 68michaelgeorge@gmail.com Com: Chris & Kathy Hunt, Anita George, Sandra Pryor, Alex Murrison, Helen & Gustaf Schalin St Mary's: Secretary: Tibby Mimpriss Treasurer: John Branfield 845107 George & Fiona Storey, Sandra Gibbons, Suki Cohen, Derek Johns, Caroline Nevill, Ned Carter, Rosemary Knox, N Thorogood

VILLAGE DIARY

May 27th	Nayland Church Fete 1-4pm Webb's Meadow <i>page 11</i>	
June 2nd 3rd 5th 9th 12th 13th 14th 17th 21st 23rd 24th 25th 28th 30th	Rogation Sunday: annual trailer ride starting from St Mary's Wiston at 3pm <i>page 38 & 39</i> Village Hall Management Committee meeting 7.30pm Village Hall <i>page 33 & 47</i> HortSoc: Coach outing to Pashley Manor Gardens <i>page 14 & 26</i> Conservation Society: Open Gardens 2pm-6pm <i>page 13 & 25</i> Parish Council Meeting 7.30pm Village Hall Committee Room <i>page 47</i> Over 60s: meeting 2.30pm Parkers Way Community Centre <i>page 24</i> Village Cinema: 'Loving Vincent' 7pm for 7.30 Village Hall <i>page 12 & 28</i> Women's Institute: <i>The True Price of Fish & Chips</i> Andy Malcomb 7.30pm Village Hall <i>page 24</i> Primary School: HSA Summer Fete 3.20pm <i>page 10</i> Country Music Club: 'Brian's Country' 7.30 Village Hall <i>page 11</i> Conservation Society: Sarah Cook 'Cedric Morris Artist & Plantsman' 7.15 for 7.30pm Village Hall <i>page 13 & 25</i> Luncheon Club for over 60s: at Longwood Barn 12 noon for 12.30 <i>page 7 & 24</i> Nayland Choir: concert <i>Midsummer Cabaret</i> Village Hall <i>page 27 & 40</i> Nayland 10k Fun Run: Village Hall Playing Field <i>page 1 & 14</i>	
July 1st 3rd 4th 14th 10th 11th 12th 15th 15th 17th 18th 18th 19th 21st 26th	Village Hall Management Committee meeting 7.30pm Village Hall <i>page 33 & 47</i> Community Council: meeting 8pm Church Hall (Exec 7.30) <i>page 7 & 47</i> Village Players: Drinks at the Anchor at 8pm <i>page 29</i> Village Players: Auditions 5pm Church Hall <i>page 29</i> Parish Council Meeting 7.30pm Village Hall Committee Room <i>page 47</i> Over 60s: meeting 2.30pm Parkers Way Community Centre <i>page 24</i> Village Cinema: 'Vice' 7pm for 7.30 Village Hall <i>page 12 & 28</i> Royal British Legion: meeting 7.30pm Church Hall <i>page 23</i> Women's Institute: <i>Hedgehog Rescue</i> Paula Baker 7.30pm Village Hall <i>page 24</i> Village Players: Auditions 7.30pm Church Hall <i>page 29</i> Luncheon Club for over 60s: Summer Tea Party at Longwood Barn <i>page 7 & 24</i> Evening of Music: Tinuke Olafimihaan 7pm for 7.30 Village Hall <i>page 11</i> HortSoc: Summer Garden Party 7.30pm <i>page 11 & 26</i> Country Music Club: 'Budgie Coleman & The Mustard Band' 7.30 Village Hall <i>page 11</i> Village Cinema: 'The Keeper' 7pm for 7.30 Village Hall <i>page 12 & 28</i>	
August 3rd 8th 9th 18th 19th 30th	HortSoc: Flower Show 2pm-4pm Village Hall <i>page 15 & 26</i> Over 60s: meeting 2.30pm Parkers Way Community Centre <i>page 24</i> Village Cinema: 'Sometime Always Never' 7pm for 7.30 Village Hall <i>page 12 & 28</i> Country Music Club: 'Colt Murphy' 7.30 Village Hall <i>page 11</i> Women's Institute: Afternoon Garden Tea Party <i>page 24</i> Village Cinema: 'Can You Ever Forgive Me' 7pm for 7.30 Village Hall <i>page 12 & 28</i>	
Forward Planner	15th September 8th September 22nd September 7th October 16th October 18th October 5th November	Concert by the Boxted Silver Band St James' Church <i>page 21 & 24</i> HortSoc: Coach outing to Audley End House & Gardens <i>page 22 & 26</i> Country Music Club: 'Long Shot' 7.30 Village Hall <i>page 11</i> Conservation Society: Nick Amor <i>The Suffolk Medieval Cloth Industry</i> Village Lunch: 'Layer Marney Towers' Nicholas Charrington <i>page 30</i> 'Antiques Roadshow' in aid of Cancer Research UK Village Hall <i>page 21</i> Nayland Bonfire & Fireworks <i>page 6</i>

Thank you for your contributions – if you have any ideas or suggestions please contact the Editor

DEADLINE (subject to space) for receipt of copy in the **AUGUST** issue is 3pm on: **20th JULY**

CONTACT		ADVERTISING COSTS		
The Editor: Lorraine Brooks Tel: 262807 E-mail: naylandcc@yahoo.co.uk www.naylandcommunitycouncil.org.uk Copy can be posted in the Community Times Box in Nayland Post Office To ensure contributions can be accommodated in the space available it is advisable that space for promotion or large articles is reserved with the editor.		Six issues for the Price of Five – get one advert FREE		
		Size	Dimensions	Cost
		1/16 page portrait	6.3cm H x 4.4cm W	£5
		1/8 page landscape	6.3cm H x 9cm W	£10
		1/4 page portrait	13cm H x 9cm W	£17.50
		1/4 page landscape	6.2cm H x 18.4cm W	£17.50

All monies raised from the Community Times go to good causes within the community. The Editor and Community Council may not be held responsible for the accuracy of articles or any other claims made by any advertiser in the Community Times.

The Editor and Community Council reserves the right to alter, shorten or refuse any items submitted for publication.

The Community Times is produced and distributed by the **Nayland-with-Wissington Community Council**

Registered Charity No.304926

The Community Times can also be viewed / downloaded from: **www.naylandcommunitycouncil.org.uk**