



# NAYLAND<sup>WITH</sup> WISSINGTON COMMUNITY TIMES

YOUR LOCAL MAGAZINE FOR NEWS AND VIEWS

DECEMBER 2016

No: 164

## SPECIAL INTEREST

Village Players: 'Cinderella'

Christmas Family Fayre

School Christmas Fayre

Carols Around the Christmas Tree

Candlelit Carol Service

RBL Christmas Party

Village Players Auditions

New Year's Eve Party

Supper with Strings

Nayland Calendar

## THIS ISSUE

Christmas Dates To Remember

The Court Knoll Project

Community Post Office

The Village Quiz

Bonfire & Fireworks

## REGULARS

Community Council News

Parish Council Notes

Village Hall Meetings

Society News

Church Services

Garden Notes

Village History

## PLUS

Dates for your Diary

Local Information

Contact Details

(on back pages)

## SEASONS GREETINGS

The Editor and the  
Community Council  
would like to take  
this opportunity of  
wishing you all a  
Very Merry Christmas  
and a  
Happy & Prosperous  
New Year

## BONFIRE NIGHT

Nayland's bonfire night has been going for many years and has always provided the Community Council with funds. This year was no exception. But it does not just happen.

Once again our thanks go to all who helped make this event such a great success.

*Ken Willingale,  
President, Community Council*



# NAYLAND WITH WISSINGTON PARISH COUNCIL

**Meeting: 12th October 2016**

*(This is an extract from the draft minutes of the meeting)*

## PUBLIC FORUM

Members of the public expressed concern that in their opinion community spirited work on Caley Green had been met with criticism. They explained the background and the reasons they stepped in. The Chairman explained the ownership, responsibilities and the policy adopted by the Environment Agency. The PC listened with interest to the views expressed by residents attending. The Chairman explained regular nettle cutting by the river bank has been added to next year's maintenance contract and the Parish Council is currently reviewing the whole regime.

Concern was expressed about the lack of Police attendance in the village and the spate of vandalism. The Chairman explained how the Parish Council were urging more support towards detection and accurate recording of information by the Police.

## PLANNING

Decisions from the Planning Authority: a site inspection was arranged at Harpers Hill Farm regarding the proposed change of use at the waste transfer station. Work can proceed to remove leylandii trees to ground level at **Hollies, Stoke Road** B/16/01184/TCA. Permission had been granted for single storey rear extension at **48 Bear Street** B/16/00768/FHA & 769/LBC. Permission had been granted for a garden greenhouse at **8 Jane Walker Park** B/16/01132/FHA.

Councillors had No Objections to the following applications: proposed rear extension at **The Manse, 27 Bear Street** B/16/01210 & 01109, proposed rear extensions at **109 Bear Street** B/16/01260, proposed rear extension at **14 Heycroft Way** B/16/01200, proposed removal of 3 leylandii at **28 Stoke Road** B/16/01343.

A response was issued between meetings on an application for a new annexe and garage at **Ricklands Bungalow, Wiston Road** B/16/01238.; councillors had no objections to a residential annexe subject to a condition to ensure it cannot be used or sold separately from the host dwelling.

## COMMUNITY COUNCIL'S RAFFLE AT THE CHRISTMAS FAYRE

Donations of prizes for the Community Council's raffle at the Christmas Family Fayre - on Saturday 3rd December - would be very much appreciated and can be left at 107 Bear Street or 9 Birch Street or brought along on the day.

## NAYLAND VILLAGE HALL REQUIRES A BOOKINGS SECRETARY

This job is unpaid and usually only takes up a couple of hours a week. It is a very good way of getting to know everyone in the village. Some familiarity with computer skills is needed and training will be given. If you are interested in joining an enthusiastic group of volunteers who run this amenity which greatly benefits our community, contact Christine Thompson on 262825 or email at [christinecthompson@btinternet.com](mailto:christinecthompson@btinternet.com).

### Job Description:

- Oversight of the online booking system
- Email weekly the confirmed bookings to the caretaker and treasurer
- Show new hirers around the hall
- Attend monthly VHM meetings
- Answer any queries via the village hall email and mobile phone
- Check village hall post box

## HOUSING NEEDS SURVEY

Members expressed disappointment at the lack of progress by the District Council in relation to organising a survey. A letter from the owner, in respect of a potential housing scheme at Nags, was read to Council. Following discussion, it was agreed to invite the owner to a working party meeting.

## ALLOTMENTS

The rent request letters had been issued. Ian Harris and Gerry Battye were working on the specification for the gates.

The Allotment taps had failed an inspection by the Water Authority, however, subsequent investigation instigated by the PC revealed that the taps were up to the required standard.

## HIGHWAYS

The response to the A134 speed limit consultation had been issued. The comments were supportive of the change, however, suggested extending the speed reduction to Honey Tye. Gerry Battye reported on progress towards a noticeboard for inside the redundant bus shelter at the entrance to Heycroft Way. James Finch was arranging for the road signs on the A134 to be cleaned. The missing sign showing the start of Essex on the A134 will be reported to Essex County Council.

## STREET LIGHTING

Orders had been made and remaining lights from previous orders had been chased. The small amount of upgrades scheduled for next year will be ordered now.

## VANDALISM

Concern was expressed at the continuing vandalism problem. A tree had been taken down near the turning circle on the Fairfield. There were 2 recent break ins at the dig. It was agreed to produce a letter for distribution to nearby residents urging vigilance and reports to be made either on 999 if a crime was in progress or otherwise on 101

## CALEY GREEN

The comments made by residents in the public forum were considered in relation to the management of Caley Green. It was felt that some views expressed were valid and cooperation was needed between the various interested parties. Consideration of future management of the area was in the process of being reviewed and considered.

## BURIAL GROUND

A memorial application was duly approved. The memorial seat for the late Ben Collins had been installed.

## NAYLAND WITH WISSINGTON PARISH COUNCIL VACANCY

**Do you live or work in Nayland or Wiston?**

Would you like a new challenge?

Are you concerned about the local community and environment?

Do you enjoy working as part of a team?

**Would YOU be interested in joining the Parish Council as a Co-opted Member?**

If so, please apply by letter to let us know what qualities, experience and skills you can offer the community. Councillor training courses are available. You can find out more about the work of the Parish Council by speaking to a Parish Councillor or by emailing or telephoning the Parish Clerk, Mrs. Debbie Hattrell:

[pc@naylandwithwissington.suffolk.gov.uk](mailto:pc@naylandwithwissington.suffolk.gov.uk) 01787 378649



# NAYLAND WITH WISSINGTON PARISH COUNCIL

## Meeting: 9th November 2016

(Minutes will be available on PC notice board in the High Street or [www.naylandandwiston.net](http://www.naylandandwiston.net) after the next meeting)

### DISTRICT COUNCIL REPORT

Melanie Barrett is pursuing the Babergh District Council (BDC) team responsible for producing the Housing Survey. Chair Mary George expressed disappointment at the delay as the PC was advised the survey redesign was imminent last February. She confirmed that BDC are withdrawing roadside collections of textiles and will not implement glass collection. The Council's recycling sites are to remain free to access.

### PLANNING APPLICATIONS

Decisions from the Planning Authority: permission had been granted at **Ricklands Bungalow, Wiston** for a new annexe and garage subject to not being sold or occupied separately, at **The Manse, 27 Bear Street** for a single storey rear extension and at **28 Stoke Road** for three leylandii to be cut down. Permission had been granted for **TD and AM Bugg at Harpers Hill, Nayland** B/16/01037 for change of use of land for the storage of empty skips and skip lorry parking subject to detailed conditions listed on BDC's website. These include: no lighting shall be erected in site, landscaping is carried out and maintained, no operations shall be undertaken outside the following times: 7am-5pm Mon-Fri; 7am-1pm Sat; no operations Sundays, bank or national holidays.

Discussing recent applications councillors had no objections to the proposed reduction of the crown of 4 ash trees and prune back an alder tree to previous levels at **Old Poplars, 106 Bear Street** B/16/01382.

### ALLOTMENT FIELD

Invitations to tender for maintenance of the allotment field (hedge trimming, gate replacement etc) have gone out.

A healthy elm tree was cut down maliciously; this has been reported to the Police.

The Council contacted Suffolk County Council (SCC) regarding the sign leading to Bell Meadow as it was badly deteriorated and impeded access to the gate and footpath; the PC felt it would be better positioned on the other side of the gate. SCC's response was that the sign was fit for purpose but it has since fallen off. The PC will raise the matter again with SCC.

### HIGHWAYS

Following the installation of a black pole for a speed reminder on the green fronting The Crescent, Stoke Road councillors requested James Finch to act in liaison between residents and the County Council to resolve concerns.

The PC is seeking quotations for refurbishment of the redundant bus shelter at the entrance to Heycroft Way and installation of an interior notice board.

### STREET LIGHTING

With the exception of one streetlight currently attached to a private house, all upgraded streetlights have been approved by the PC. Mary George is in discussion with the householder.

*Continued on page 12*

## Christmas Dates To Remember

Christmas Day and Boxing Day fall on Saturday and Sunday this year, and New Years Day is on the following Sunday.

### Doctors Surgery

Open Monday 19th - Fri 23rd December 8am-6pm.

Closed Sat 24th - Tues 27th December

Open Weds 28th - Fri 30th 8am-6pm.

Closed Sat 31st December - Mon 2nd January

Open as usual from Tuesday 3rd January

*Out of hours emergency 01206-578070 or NHS 111 – Don't forget to order your prescriptions*

### Refuse Collection

Black bins: collections due Thursday 29th December will be Friday 30th

collections due on Friday 30th will be on Saturday 31st

Blue bins: collections due Thursday 5th January will be Friday 6th

collections due on Friday 6th will be on Saturday 7th January

Brown bins: no collection over 26th December - 6th January.

*Leave bins out by 6.30am. See page 36 for Babergh's full schedule*

### Bus Services

See page 46 for Christmas services

### Kerridge's Butcher

Opening hours will be on display in the shop

Open Thursday 22nd - Friday 23rd December & Saturday 24th December

Closed Sunday 25th - Tuesday 27th December.

Open Wednesday 28th - Friday 30th & Saturday 31st December

Closed Sunday 1st & Monday 2nd January, open as usual from Tuesday 3rd January.

*Orders for Christmas can be made from 1st December*

### Post Office

Open Saturday 24th December 9am-1pm,

Closed Sunday 25th - Tuesday 27th December

Open Weds 28th Dec 9am-1pm, Thurs 29th, Fri 30th 9am-5pm, Sat 31st 9am-1pm.

Closed Sunday 1st & Monday 2nd January, open as usual from Tuesday 3rd January.

Shop only open: Mon 26th & Tues 27th Dec 9am-11am, Sun 1st & Mon 2nd Jan 9am-11am.

*If pensions/benefits are due on days PO is closed they may be collected the week before.*

Last Post  
for Xmas Delivery:  
2nd Class: 20<sup>th</sup> December  
1st Class: 21<sup>st</sup> December  
Spec Delivery Guaranteed:  
22<sup>nd</sup> December



## Office Matters

Comprehensive  
**WORDPROCESSING**  
Service

(Inhouse cover also provided)

Please contact

**Margarette**  
on

**01473 822860** or

**07863 560945**

to discuss your particular  
requirement

[margarette@officematters.org](mailto:margarette@officematters.org)

**Professional and Confidential**

## INDOOR TENNIS COURT

at Newtons Farm,  
Wissington, Nr Nayland

"PAY AND PLAY"

NO MEMBERSHIP FEE  
PARKING & TOILET FACILITIES

Further

details:

**01206**

**262453**

[www.indoortenniscourt.co.uk](http://www.indoortenniscourt.co.uk)



## Learn to drive

with your local driving school



**Rob Austin D.O.T.A.D.I.**

Fully qualified

12 years experience

Dual controlled car

Learn at your own pace

1st 2 hour lesson £25

£19 per hour there after

For more information or to book  
lessons call Rob on:

**01206 262106**

or: **07946 085338**

## TOWN PRINTS

**General  
Picture Framing**

Also a selection of  
antique engravings  
of Colchester and District.

Foster Jones  
Longwood Cottage,  
Fen Street, Nayland,  
CO6 4HT

**Tel: 01206 262483**

original hand-made  
**prints**

framed or unframed



Smallbridge Avenue 20x3cm  
many more designs from £45

**Tel: 01206 262927**

[annetownshendart.weebly.com](http://annetownshendart.weebly.com)

## Lower Dairy Farm

Traditionally Reared  
**BEEF**

Free Range Pork

Wild Venison

Preserves & Chutneys



Lower Dairy Farm Shop  
Water Lane, Little Horkesley  
CO6 4JS Tel: 01206 262314

[www.lowerdairyfarm.co.uk](http://www.lowerdairyfarm.co.uk)

## Fix-A-Lock

Locksmith - available 24/7

- Emergency LOCKSMITH -
- Wooden and UPVC doors
- All window & door repairs -
- handles/hinges/mechanisms/etc
- Replacement sealed units
- UPVC window & door specialist
- UPVC window & door installations
- CRB checked



**Ted Blanchette**

**07836 551 032**

[tedblanchette@tiscali.co.uk](mailto:tedblanchette@tiscali.co.uk)

## Stour Valley Landscapes

*Gardening*

*Fencing*

*Landscaping*

*Tree & Hedge work*

*Handyman jobs*

*For a local, friendly &  
reliable service:*

**Tel: 01206 263629**

**Mob: 07801 430751**

## D.S. Clarke

*Building Services*

For professional - high quality work

General building work including:-

Extensions - Renovations - Brickwork

Landscaping - Roofing- Kitchens - Tiling

Plastering - Carpentry - Decorating etc

For a free, no obligation estimate,  
contact David Clarke on:

**Tel: 01787 227943**

**Mb: 07867 851 137**

[dsclarkebuilding@yahoo.co.uk](mailto:dsclarkebuilding@yahoo.co.uk)

7 Claypits Ave, Bures, CO8 5DA

## AERIAL VIEW

TV, FM & DAB Aerials  
Freeview, Freesat & Sky  
Motorised Satellite  
Satellite Broadband  
Installations, Repairs,  
Poor Reception & Upgrades  
Extra Points, Magic Eyes  
& TV Wall Mounting

Please call for other services

**01787 311057**

[www.aerial-installers](http://www.aerial-installers)

## Karen Bromley Swim School

BABIES  
TODDLERS  
TEENS  
ADULTS  
SMALL GROUPS  
POOLS IN YOUR AREA  
FULLY QUALIFIED TEACHER  
STA & ASA



TAKING BOOKINGS NOW

**07841 483515**

[kbswimschool@yahoo.co.uk](mailto:kbswimschool@yahoo.co.uk)

[KbSwimSchool.com](http://KbSwimSchool.com)

## JOHN TOKELY Painter & Decorator

*Interior & Exterior  
Work Undertaken  
Free Estimates*

*No Job too large  
or too small*



9 Nayland Road, Colchester,  
Essex CO4 5EG  
**Telephone: 01206 845665**  
**Mobile: 07976 848310**

## TRG PEST CONTROL

Rabbits, Moles, Rats,  
Mice, Wasps, etc  
Efficient and  
Economical Service

For Further  
information call

**Terry Gowing**

**Tel: 01206 322776**

**Mobile: 07990 954192**

Colchester's Premier Roofing Specialist



Established  
over 30  
years

**EXTERIOR  
CARE**

FLAT ROOFING - TILING & SLATING  
New Roofs & Repairs - Chimney Work  
- Leadwork

An Established Local Family Business  
QUALITY WORKMANSHIP GUARANTEED  
FREE ESTIMATES & ADVICE  
For Quality, Reliability & Service Please Call

**01206 618486**

MOBILE 07970 016234

5 Brook Cottages, Boxted, Colchester CO4 5TW

## HANDYMAN

based in Nayland

**Gardening  
Decorating  
DIY**

**Odd Jobs**

References available

**Call Stuart Mosley**

**07760-236937**

**01206-262981**

**TO ADVERTISE  
IN THE  
COMMUNITY TIMES**

Contact:

Editor: Lorraine Brooks

**Tel: 262807**

E-mail:

[naylandcc@yahoo.co.uk](mailto:naylandcc@yahoo.co.uk)



## JP Services

Fencing - Horticultural Woodwork - Paving  
Sleepers/Landscape timber  
07970 559251 - [www.jpsservices.co](http://www.jpsservices.co)

### Services:

Sheds & greenhouses erected and repaired, bases laid  
Raised beds ■ Patios and paving ■ Artificial grass installed  
Traditional window boxes & planters  
Rustic structures: rose arches, pergolas etc  
Fencing, hedge laying ■ Gardens cleared  
NPTC chainsaw certification held  
Waste removed, EA registered waste carrier  
Flat pack furniture constructed ■ And much more

### Sales: visit us at [www.jp-services.info](http://www.jp-services.info)

Sleepers/landscape timber ■ Oak tubs/barrels  
Steel barrels, ideal for storage, incinerators etc

## COMPUTER DOCTOR CALL OUT

THE TIME THAT SUITS YOU!  
COMPUTER MAINTENANCE & UPGRADES

- PC Maintenance
- Device Installation
- Software Installation
- Upgrading Operating Systems
- Improve Performance
- Internet & Mail Configuration
- Virus Detection and Removal



Contact: 07989 405791 (Nayland based)

## Country Cars Private Hire

Personal & Professional Service Polstead Based

Local & Long  
Distance

Airports - Theatres  
Weddings - Hospitals



Contact Dave Howard

01206 262196 07767 076976

## Mike Freeman's Window Cleaning Residential and Commercial



For an honest, fully  
insured, experienced  
window cleaning  
service, please call  
**Mike: 01206 503814**  
or **07590 396781**

Facias, Gutters, Frames, Cladding - all undertaken

13 Flanders Field, Colchester CO2 8BX

## DAWN DALE

### BEAUTY & RELAXATION THERAPY

AUSSER HOUSE • POLSTEAD STREET • STOKE BY NAYLAND

OFFERING: MANICURE INC GELCOLOR BY OPI,  
PEDICURE, WAXING, AROMATHERAPY,  
BODY TREATMENTS, FACIALS,  
EYE TREATMENTS, MASSAGE  
LADIES ONLY

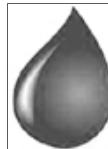
OPEN: TUESDAY-SATURDAY 9AM-5.30PM

GIFT VOUCHERS AVAILABLE

PLEASE PHONE DAWN:

**01206 262 118**

[dawncdale@gmail.com](mailto:dawncdale@gmail.com)



## STOURVALLEY

HEATING & DOMESTIC SERVICES LTD

- OIL CENTRAL HEATING INSTALLATION & MAINTENANCE
- COMMISSIONING
- HOT WATER STORAGE INSTALLATION
- UNDERFLOOR HEATING INSTALLATION
- WATER SOFTENER INSTALLATION
- FULL BATHROOM DESIGN & INSTALLATION
- DOMESTIC PLUMBING SERVICES

Local experienced established registered installer  
For advice or a free estimate call MARK WARREN  
on Mobile 07968 586613



## SHORT COURSES at ASSINGTON MILL

Beekeeping for beginners  
Jam, jellies & juice making  
Birds of Prey, working with  
Hen keeping in your garden  
Chain-sawing for amateurs  
Clay ovens - how to make one  
Bricklaying for amateurs  
Sheep for Smallholders  
Wild game butchery  
Wooden spoon carving  
Willow plant supports

Bread-making  
Foraging for food  
Dog psychology  
Tortoise ownership  
Natural Skin Care  
Fruit tree pruning  
Stained glass  
Silver clay jewellery  
Cyder-making  
Taxidermy  
Picture framing

Fly Fishing  
Scything  
Mosaic  
Badgers  
Upholstery  
Storytelling  
Hedgelaying  
Felt-making  
Signwriting  
Pig-keeping  
Calligraphy

Contact Anne Holden: **01787 229955**

[info@assingtonmill.com](mailto:info@assingtonmill.com)

[www.assingtonmill.com](http://www.assingtonmill.com)

## Evolve LANDSCAPES

Landscape design & build

- Landscape Design
- Construction work
- Paving / driveways / patios / paths
- Fencing / decking / garden walls
- Pruning / hedge cutting
- Tree felling / clearance
- Regular garden maintenance



T 01206 263813 M 07841 625358

E [info@evolve-landscapes.co.uk](mailto:info@evolve-landscapes.co.uk)

[www.evolve-landscapes.co.uk](http://www.evolve-landscapes.co.uk)

## COMMUNITY COUNCIL REPORT

Meeting: 31st October 2016

Vice Chairman: Colin Ramsell 264006

[www.naylandcommunitycouncil.org.uk](http://www.naylandcommunitycouncil.org.uk)

Colin Ramsell welcomed members to the meeting.

### MATTERS ARISING:

**Executive Committee:** Colin Ramsell reminded expressed sadness at the recent death of Neil Barbrook, our Chairman. His energy and commitment will be greatly missed by the CC and many in the village.

Colin added he will continue as acting Chair for the next meeting but feels a younger person is needed to take on the role as soon as possible. The CC Executive also urgently requires more members who are members of village groups.

### FUNDRAISING ACTIVITIES:

**Spring/Summer Event:** It had been agreed to move the CC's Fun Village Quiz from October to February. The recent quiz had been a huge success but it was felt that February 2017 was too soon to hold another; the next quiz will be held in February 2018, on a date to be decided.

The possibility of a fundraiser in collaboration with the Post Office Committee was mentioned but no decision was made.

Further ideas and/or support with running events would be welcome.

**Selling advance raffle tickets at Farmers' Market:** Thanks were expressed to volunteers for selling raffle tickets and calendars ahead of the Quiz and Christmas Fayre during the Markets. There will be a first prize of £50. It was noted that the Farmer's Market will not be continuing after December.

**Community Council History & Website:** Lorraine Brooks said the CC's history display will have another outing at the Christmas Fayre. A photo album of the Street Fayre and much of the CC's history archive have been added to [www.naylandcommunitycouncil.org.uk](http://www.naylandcommunitycouncil.org.uk)

**Community Defibrillator:** This was a proposal for a community defibrillator sited at the Fire Station which had approval by the Fire Service. Karen Elliott on behalf of First Response, feels this is a worthwhile project. She confirmed there is no possibility of harming a patient. The device talks you through everything step by step. It analyses the heart and will not give a shock if it is not suitable to do so. You will also have the support of the 999 operator.

Rachel Hitchcock is seeking advice from other villages who have a community defibrillator. Mary George will forward research the Parish Council previously carried out. To take this project forward grants will need to be sourced. Grants may still be available from the British Heart Foundation and/or the Big Community Fund run by District Councils.

**Save Our Post Office Campaign:** Maggie Ryan reported on the current situation.

An Executive Management Committee of eight members is in place with Maggie Ryan as Chair and Simon Carter as Vice Chair. Simon reported that progress is being made in the plan to secure the products and services of our village post office in preparation for the retirement of the current postmistress. The next steps are: by the end of this year to establish and register the Community Company; to complete due diligence on and engage in further talks with the Post Office and the Postmistress to agree how we can take on the Post Office business; to determine exactly what works need to be undertaken to the premises and how they will be funded; to agree the business plan. In early 2017: to action the business plan and determine our fundraising needs. By Easter 2017: to issue the Community Share Offer and invite the entire community of Nayland and Wissington to become a part of this exciting community enterprise. When fully funded, to actually acquire the Post Office business, complete the conversion works and then launch our Community Enterprise.

A grant application had been made to the CC for assistance with seedcorn capital the purpose of which was to get the Community Company off the ground, i.e. register the company

with the regulators and other authorities, give the resources to conduct due diligence on the business acquisition of the post office, and fund the publicity costs of the share issue and public awareness campaign. Members felt this will be very beneficial for the community and options have been thoroughly explored by the volunteer teams involved. It was unanimously agreed to award a grant of up to £2,500.

**Village Year Planner:** It was previously mooted that having a magnetic year planner in the Post Office may be a solution to preventing clashes of activities in the village. The discontinued village diary in the Post Office and existing diary on [naylandandwiston.net](http://naylandandwiston.net) were not proving successful solutions. Maggie Ryan suggested once the Community Post Office was in place alternative solutions may be available. Setting up a Nayland App was also suggested.

### RECENT ACTIVITIES:

**Fun Quiz - Friday 7th October:** Colin Ramsell thanked Rachel Hitchcock and her helper for organising the quiz and Claire for running the raffle. Rachel said she had enjoyed it. The event had been a resounding success, a fun night with a great atmosphere. Maggie Ryan confirmed the evening made £310 profit.

### GRANTS & DONATIONS:

**Donation to St Helena Hospice in memory of Neil Barbrook:** Many members of the Exec and other residents of Nayland paid their respects to Neil attending the funeral service. It had been agreed to make a donation of £250 to St Helena Hospice, a local charitable organisation which has been of benefit to a number of NwW residents. It provides reassurance and end of life care and comfort and support to families at a time of distress.

### Conservation Society: Court Knoll exploration

The CC have pledged £1,000 to the Conservation Society towards archaeological exploration at Court Knoll. A letter has been received from Mike Hunter, their Chairman, thanking the CC for supporting phase 1 of the project which has been hugely successful, both in terms of community involvement and historical discovery. They are hopeful that phase 2, involving the analysis of all finds, can be completed without requesting a further grant. However, in the latter part of 2017 the CC's assistance may be sought for phase 3, preparation of the final report.

**Village Hall Endowment Fund:** The VHMCM requested £1,000 towards this fund; at the May meeting the decision was deferred rather than the chairman using his casting vote against the grant. At that meeting, in addition to having queries, there had been concerns that a grant of £3,500 has already been awarded to the VH this year. A response from Peter Mann, confirmed previous grants to the Endowment Fund had paid into the Endowment Fund bank account and that expenditure from the fund requires the agreement of the Parish Council, the Community Council and the VHMCM. He states he will confirm this with the Parish Council. Following further discussion it was agreed, 6 to 3 in favour, to award the £1,000 grant.

### Callum Kennedy: volunteering placement

Callum, who has often helped out at CC events, has been fundraising to reach his £800 target for a three-month volunteering placement. Whilst in Burkina Faso, he will be working with a small group of fellow volunteers to help raise awareness of the human rights of disabled people and to help empower them in their local community. It was agreed to award a grant of £100.

### TREASURER'S REPORT:

Maggie Ryan gave her report. She warned there will be a deficit this year; we need to be mindful that several large grants have been awarded. Changes to bank signatories is being dealt with as is the mandate for online banking.

Main income includes: Community Times £3,200, Calendar £1,226, Street Fayre £1,108, Village Quiz £350 Nayland History Exhibition £135.



Nayland with Wissington Community Council's

# CHRISTMAS FAMILY FAYRE

**Saturday 3rd December**

10.30 until 1pm in Nayland Village Hall

## Fun for all the Family

Father Christmas & his Elf

Musical Entertainment by Nayland Primary School

Traditional Stalls & Festive Goodies

Mulled Wine, Fabulous Food, Seasonal Sounds

Raffle & Tombola, Great Atmosphere

Community Council's History Display

Main expenditure includes: Community Times £1,061, Street Fayre £776, Calendar £643, Village Quiz £39, Grants £3760 (Village Hall Kitchen £3,500, Mother & Toddler Group £150, Nayland History Exhibition £110). We hold £444 for First Response, £270 for the Services Fund. Grants not yet paid: Conservation Society Court Knoll £1,000, Community Post Office £2,500, Village Hall Endowment Fund £1,000, Callum Kennedy £100. **Therefore unencumbered assets are £14,343.48.**

**Community Times:** Lorraine Brooks thanked Claire Buller for photos of the Quiz and gave a plea for photos for the CT and the CC's website of Fireworks Night and the Christmas Fayre - the more the merrier.

**Village Calendar:** Lorraine Brooks said calendars are on sale at village shops - Post Office, Blue Owl, Hatten's Village Stores and Forget Me Not. Currently 107 copies of the 2017 calendar have been sold.

More help selling calendars especially at society events would be welcome. Please let Lorraine know if you could sell calendars at an event you are organising.

### FORTHCOMING ACTIVITIES:

**Guidance Lists and Risk Assessments for Events:** These have been established with the coordinators of each event. This will comply with our new insurers and help new coordinators to pick up the reins.

**Bonfire & Fireworks - Saturday 5th November:** Iain Wright is coordinating the event. Claire Buller has the BBQ and sales teams organised, Tricia Hall has the mulled wine in hand.

**Christmas Fayre - Saturday 3rd December :** Coordinators: Rachel Hitchcock is managing the table bookings, hall layout plans and advance tasks, Claire Buller and Julie Clark will coordinate on the day. Father Christmas will be in attendance and Jayne Kennedy has confirmed Nayland School will perform again. Volunteers are needed to help setting up the hall at 9am and with refreshments and manning the raffle.

Donations of raffle prizes would be very welcome and can be dropped off to Claire at 107 Bear Street (left in the side porch if out) or to Colin Ramsell 9 Birch Street (left by back door if out).

**Village Christmas Tree** - Claire Buller is leading. The tree is ordered, the Dental Surgery are kindly providing the electricity supply, Sean Norfolk and the team will be erecting the tree on Sunday 11th December at 9 am. Preventative measures will be taken ensure the site is clear of parked cars. The tree will be taken down on Monday 2nd January,

### SOCIETY REPORTS

**Conservation Society:** Andora Carver thanked the CC for supporting the archaeological exploration of Court Knoll; the project has been very exciting. Over half of the 500 volunteer days were by Nayland residents so this was very much a community venture. The excavation has amassed a wealth of new knowledge and information in terms of finds, records, photographs and plans that will be analysed over the coming months. Excavations revealed that part of a rectangular building had been demolished to allow a curved wall to be constructed; this could be part of a semi-circular apse, or part of a tower. A large part of the wall was beyond a trench that Historic England



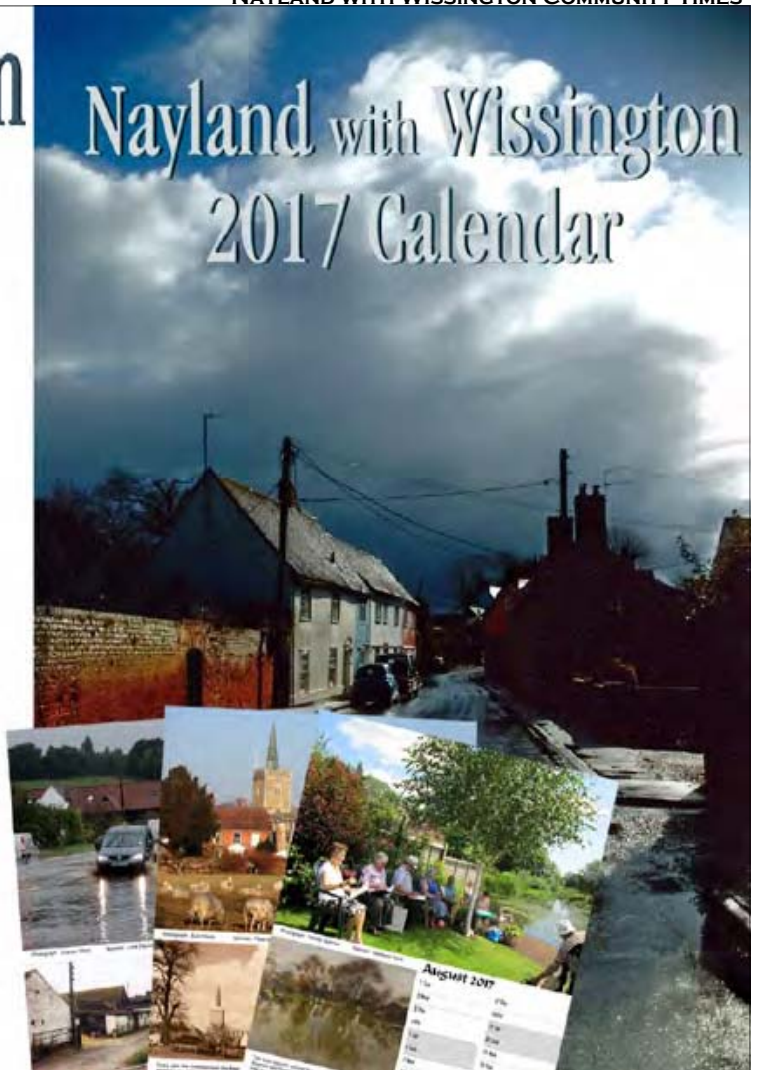
# Nayland with Wissington 2017 Calendar

Fantastic new views of the parish  
accompanied by  
historic views and notes

Still priced at just £5 !

They make ideal gifts

Calendars are on sale at  
the Post Office,  
Blue Owl  
Hatten's Stores  
Forget-Me-Not  
and at various village events



had consented to be excavated. With many new questions raised it is hoped a smaller scale dig may be permitted next year.

**Parish Council:** Mary George said they still have a vacancy on the Council, part of the Fairfield playground has been resurfaced and they are moving towards the last phase of updating street-lighting.

**Royal British Legion:** John Partridge said they had enjoyable visits to Brightlingsea including the museum, a harbour boat trip, the historic boat yard and to Sizewell Power Station, Integration with the Women's' Section is going ahead despite some reservations. They will observe two minutes silence at the War Memorial on 11/11 and the Sunday Remembrance Service will be on 13th November.

**HortSoc:** Trevor Smy said it had been another successful year: The sun beamed down on a very enjoyable coach outing to Wrest Park and Hopleys Gardens and Simon White gave an interesting talk 'Highlights of Chelsea and Hampton Court' showing his vast collection of behind the scenes photos.

On 9th November at the joint meeting with the Conservation Society, Edward Martin will give an illustrated talk on 'The Lost Gardens of Suffolk'. After the Christmas Fayre HortSoc goes into semi-hibernation until springing back to life in March with a talk on *Wildlife in the Garden* and the Spring Show.

**Women's Institute:** Jeannette Finch said on 21st November Revd Canon David Atkins will be talking on *Hatches Matches and Dispatches* and on 19th December Peter Layzell's talk will be *Tales from a Rural Police Sergeant*. They are planning an outing to Monks Eleigh Corn Dolly Centre and will be attending Carol Services in Bures and Bury St Edmunds.

**Woodland Corner:** Karen Newton said they are very busy. A new mound has been installed, funded by the closure of Polstead playgroup.

**Baby & Toddlers:** the group has a few new mums, new

activities and there is much more enthusiasm. Numbers still fluctuate; some weeks are very busy, some still too quiet but momentum is going in the right direction. They have a new Facebook page.

**HSA:** Rachel Hitchcock said the School Christmas Fayre, with Father Christmas and lots of fun and frolic, will be on 9th December at 6-8pm,

**Book Club:** They have read a variety of books; their last book was *The Unlikely Pilgrimage of Harold Fry* by Rachel Joyce, the current book is *East of the Sun* by Julia Gregson which they will discuss at their next meeting.

**Village Hall:** Iain Wright said general maintenance is ongoing. Sara Strover has resigned as Bookings Secretary; the task is not onerous as most of the bookings are made online and the Treasurer deals with invoicing.

**Nayland Cinema:** Closure of the cinema was confirmed but Iain Wright stressed that the equipment is available for other hall hirers to use at no additional cost. Members were disappointed by the decision and hoped another group or a new group may take up the opportunity of showing the occasional film.

**Art Group:** Colin Ramsell said recent sessions have been full to overflowing. They meet every Wednesday afternoon and have visits from two visiting tutors and occasional outings.

**St James' Church:** Andora Carver said thanks to dedicated volunteers and a glorious day the churchyard has never looked in better condition before the winter.

**AOB:**

**Village Hall Gardening Morning:** The autumn session will be held on Saturday 19th November from 9am. Helpers to tidying the CC's garden would be welcome.

**Farmers' Market:** It has been confirmed that markets will not continue beyond December.

**Date of next meeting:** will be **Monday 9th January** in the Church Hall at 8pm with Exec at 7.30pm.





## NAYLAND POST OFFICE CAMPAIGN: update November 2016

<http://www.naylandcommunitycouncil.org.uk/PostOffice.html>



An Executive Management Committee of eight members is now in place with Maggie Ryan as Chair and Simon Carter as Vice Chair. Simon reported that progress is being made in our plan to secure the products and services of our village post office in preparation for the retirement of the current postmistress. In September we had an exploratory meeting on site with the Post Office Field Agent to examine the implications of taking on the Post Office; to identify the potential costs of transfer and make an initial assessment of the work needed to ensure the Post Office can continue to operate from its current base. We will be eligible for some funding from the Post Office to cover the cost of essential works they will insist upon.

We have also met with a representative from the Plunkett Foundation who will guide us in the formalities of establishing the legal entity we need to actually take on the Post Office business. Plunkett Foundation is a charity which aims to alleviate rural poverty and social exclusion by helping communities set up and run community co-operatives. Community co-operatives can come in many forms: shops, pubs, bakeries, farms, community hubs, farmers' markets, woodlands, broadband projects – the list is endless! Plunkett Foundation has supported the establishment of more than 340 community shops throughout the UK.

Community Co-operatives are businesses, but they trade primarily for the benefit of their community. They are controlled by the community, and they have open and voluntary

membership, actively encouraging people to get involved by becoming members. They do this by offering shares in the co-operative, the cost of which are set at a level that the majority of people will be able to afford.

We intend to establish up a Community Benefit Society, set up on a one member, one vote basis, rather than one share, one vote. This is important because it means that all members have an equal say in how they want the co-operative to be run, regardless of how many shares they've bought or how much money they've invested. In this way, it will be a truly democratic form of business in and for our community.

Our next steps are: by the end of this year to establish and register the Community Benefit Society; to complete due diligence on and engage in more formal talks with the Post Office and the Postmistress to agree how we can take on the Post Office business; to determine exactly what works need to be undertaken to the premises and how they will be funded; to agree the business plan. In early 2017 to action the business plan and determine our fundraising needs. By Easter 2017 to issue the Community Share Offer and invite the entire community of Nayland and Wissington to become a part of this exciting community enterprise. When fully funded, to actually acquire the Post Office business, complete the conversion works (the Post Office will be closed for a couple of days whilst all that takes place) and then launch our Community Enterprise.

### THANK YOU: LUNCHEON CLUB FOR OVER 60S

I attended the Luncheon Club for Over 60s for the first time on Thursday 25th October when my daughter kindly pushed me to the Church Hall in my wheelchair. I was most impressed by the organisation, the excellent meal accompanied by an unexpected glass of wine and the friendliness of the people there. It was a thoroughly enjoyable occasion.

Many thanks to the volunteers and in particular Olga, who worked so hard to make this possible. I hope to be able to attend again. It was good to meet old friends.

*Lyn Carter, The Merchants House, 24 Court Street*



**CHEAPER  
HEATING OIL  
& COAL**

**OilBuyingGroup**

**Together We Save on  
[horkesleybuyers.com](http://horkesleybuyers.com)**

### Nayland Over 60s LUNCHEON CLUB

A Monthly Lunch for Senior Citizens  
Church Hall ~ 12.00 noon for 12.30 pm ~ £3

**Tuesday 13 December :  
Christmas Party**

**Tuesday 24 January  
Tuesday 28 February**

Come along and join the friendly atmosphere for a chat with friends, old and new.

If you would like to join us for lunch just come along. If transport down to the Church Hall is difficult telephone Olga Alexander on 263923 to see if we can collect you.



## NEIL BARBROOK

Known for his kindness, fun, energy and enthusiasm in our community, for his professionalism and integrity at work and volunteering, Neil Barbrook, of Bear Street, Nayland died on 28th September. He was a beloved husband to Jane, supportive and loving father to Tim and Laura and a special granddad to Amelia, Jacob, Iris and William, and not forgetting pack leader to Teddy the Labrador.

Neil was born in Hertford, Mick and Cecily's second child, and together with his elder brother Roger he shared many interests particularly the railway spending countless hours together watching the steam engines ply up and down the line at the end of their road. Football and cricket were also enjoyed in equal measure.

On leaving Hertford Grammar School, Neil trained as an estimator and took work at Hertford County Council. He was twenty when he bumped into Jane at Leahoe Social Club. A few days later he called her, friendship quickly established, romance blossomed and they married two years later in Hoddeston in April 1972.

At work and at home, Neil was the person everyone turned to for advice; he was professional, reliable, understanding, level-headed and extremely knowledgeable. But at heart he was also free-spirited, loved cycling, swimming, travelling and simply to wander the countryside with Jane and their labradors. It was this rich mix which made Neil so special as a husband, father and grandfather, as a friend, work colleague and volunteer.

Neil was also a committed Francophile who spoke French fluently, loved the culture, the scenery, the food and wine and especially the wine. Hardly a year passed without a visit to France and for many years Neil revelled in holidays under canvas, in caravans or cottages.

Neil was a keen cyclist, taking part in amongst others, the London Bikeathon, the Carter cycle ride in aid of Help For Heroes and even cycling from the North to the South of France with his son Tim.

Although Neil wasn't a very practical man, and he really didn't like DIY, he was a passionate problem solver. And although he wasn't a 'pub man' he enjoyed social occasions and was often the person to stand and say 'just a few words'.

At work Neil was a consummate professional. He joined RG Carter in 1998 as an estimator, having previously worked for Fairclough's (which became Amec and is today Morgan Sindall). Neil was quickly promoted to Senior Estimator and in 2011 he was quite rightfully made a Director of RG Carter which essentially made him responsible for securing all the contracts for the business. He didn't win contracts by being the cheapest, but by knowing the clients and consultants and gaining their trust.

Neil retired in 2013, planning a more flexible way of life for himself and his family that among other things would allow him to improve his golf handicap.

Outside of the workplace Neil was a very proactive member of the Community. Some of his many interests included helping to run Lexden Saints Football Club.

Neil was very strong and used that strength to provide voice and a platform for those that didn't have it. Through the refugees, asylum seekers and migrant workers that he helped settle and learn English while volunteering with Fresh Beginnings; to the people he helped through financial difficulty at Christians Against Poverty; and also at the Citizens Advice Bureau.

He had been a member of Great Horkesley Parish Council during his time living there. On arriving in Nayland Neil soon became a very active member of the community; taking on the Chairmanship of Nayland with Wissington Community Council, something that he very much enjoyed. As well as contributing to host of other activities, Neil established the popular Table Tennis Group, he organised improvements to footpath stiles, and initiated the Save Our Post Office Campaign.

Neil will be greatly missed by family, friends and so many whose lives he touched and have happy memories.





## VILLAGE QUIZ

Nineteen teams took part in the annual fun village quiz held by Nayland with Wissington Community Council at the village hall on October 7.

Winners were Fancy Bears - Mel Skeet, Teresa Moriarty, Gill Boardman and Emma Bishton pictured - with The Millstones second and Clangers third.

The event was hosted by Rachel Hitchcock, on behalf of the Community Council, who said: "It was a really enjoyable social event and we raised over £300 for council funds. A big thank you to everyone who came along and helped to make it a fun evening."



## CLEAN NAYLAND

The second 'clean for Nayland' event held in the village on October 29 was successful with ten bags of rubbish collected.

There were nine volunteers who covered most of the ground during the afternoon.

Organiser Andora Carver said: "It wasn't nearly so bad as in the Spring. The worst place was the lay-by on the A134 near the nature reserve where drivers park and discard stuff. Babergh were very helpful, providing us with hi-viz jackets, picking sticks and rubbish bags."

## Nayland Bonfire & Fireworks

The annual bonfire and fireworks event organised by Nayland Community Council drew a record attendance on November 5.

Villager Johnny Spooner, who took his two grandchildren, said: "It was a wonderful display. Everything was very reasonable and good value for money."

It was fun for all the family. Barbecued hot dogs with sausages from our local butcher, warming hot chocolate and mulled wine, children's drinks, sparklers and luminous necklaces all sold well.

Maggie Ryan, CC Treasurer, said: "It was a very enjoyable and profitable evening."

The event made about £1,700 for Community Council funds.



## FARMERS' MARKET

Nayland Farmers' Market will close in December following a steady decline in customers.

When Suffolk Market Events took it over in November 2014 the market had been struggling but with funds made available through the Dedham Vale AONB Sustainable Development Fund its future look positive and it thrived.

However, the number of customers has reduced over recent months and local support has not been maintained.

A recent apple pressing event was well attended but Justine Paul, Suffolk Market Events owner, pointed out: "The market cannot survive on increased footfall when there's an event.

The support of local rural markets has to be consistent and sadly we haven't achieved this at Nayland."

A meeting was held and most producers together with Ms Paul decided it would cease trading in December.

She said: "I feel really sad Nayland Farmers' Market is closing. Unfortunately it had become economically unsustainable and we had to make a decision. We would like to thank the customers who have shown loyal support and the AONB Sustainable Development Fund for its financial input."

The last Nayland market will be held on Saturday December 10 in the village hall. Regular producers will be there with information about other markets in the area.



## VILLAGE HALL GARDEN WORKING PARTY



On Saturday the 19th November this happy band of volunteers came along to care for the gardens of the Village Hall. All wrapped up and working hard they kept warm in the autumn chill and they were rewarded with sunshine and refreshments. The VHMC would like to thank all who came to help.

## DO YOU RECOGNISE THIS COTTAGE?



A descendant of the Faiers family who lived in Nayland and Wiston for many years would appreciate any information about this picture, believed to be painted circa 1900. The cottage could have been altered or perhaps demolished since that time. If you can help please let Wendy Sparrow know on 262820 or [wsparrow150@btinternet](mailto:wsparrow150@btinternet)



NEW BUILDS • EXTENSIONS • RENOVATIONS

**ARCHITECTURAL SERVICES FOR  
RESIDENTIAL AND COMMERCIAL BUILDINGS**

Tel: 01206 262697  
E-mail: [info@optimum-architecture.co.uk](mailto:info@optimum-architecture.co.uk)  
[www.optimum-architecture.co.uk](http://www.optimum-architecture.co.uk)

Optimum Architecture Limited  
Nags Corner, Nayland, Nr. Colchester CO6 4LT 

GET IT RIGHT FROM THE START

## NAYLAND with WISSINGTON PARISH COUNCIL

Meeting: 9th November 2016 continued from p3

### RECREATION AND OPEN SPACES

Gerry Battye requested that current parking on parish land in the recreation ground and the congestion in Bear Street (especially around school drop off and pick up times) required councillors' discussion.

The annual safety inspection of the playground was about to take place.

The PC is to distribute a letter to residents close to the Fairfield recreation ground to request that residents are on alert regarding vandalism.

The PC will request that the EA writes to those households who have cut reeds along the river frontage of their property. The regulations are designed to protect invertebrates and other wildlife nesting in the reeds; the EA is best placed to explain the proper procedure.

Future grass cutting on Caley green is to move closer to the river to reduce the nettles.

### VILLAGE HALL

Sara Stover has retired as Bookings Secretary of the Village Hall. The PC was very appreciative of the excellent service Sara had given. The post is being advertised; in the meantime the VHMC Secretary will cover the role on a temporary basis.



## Tuition Offered

**Is English not your first Language?**

**If so, Nayland based Teaching English  
as a Foreign Language teacher offers  
one to one tuition.**

**Christopher Thompson**

(B.A. Language Studies Uni of Essex, TEFL Col. Inst)

Email: [cithom@live.com](mailto:cithom@live.com)

Tel: 01206 262825




**The Village Players**  
Presents

# Cinderella

By Kane Edgar & Colin Wakefield

Thursday 1 - Saturday 3 December 2016

Nayland Village Hall



Thursday 1 December, 6.30pm  
Early Performance - All tickets £6.00

Friday 2 December, 7.30pm  
Saturday 3 December, 2.30pm  
Saturday 3 December, 7.30pm  
Tickets £7.50, £5.00 Children

Book online at [villageplayers.co.uk](http://villageplayers.co.uk)

or available from Nayland Post Office  
(afternoons only) from 31 October

This amateur production is presented by arrangement with Josef Weinberger

# New Year's Eve

## ★ Party Night ★

with  
**Brian Mann & 60s Music**

8 till late  
Nayland Village Hall

Bring Your own Drink & Nibbles  
(Tea & coffee available)

**EVERYBODY WELCOME!**

**Tickets £8**

**Full details call John:**  
**01206 262691**

# Village Players

## AUDITIONS

for the March 2017 production of  
Terence Rattigan's play  
**'The Deep Blue Sea'**

8 adults parts of mixed ages for  
men and women.

Two auditions will be held in the Church Hall,  
Nayland, open to all comers on either day:-

Wednesday, December 7th at 7:30pm and  
Sunday, December 11th at 5pm

Enquiries: Justin Dowding 01206 262217 / [jpdowding@gmail.com](mailto:jpdowding@gmail.com)

[www.villageplayers.co.uk](http://www.villageplayers.co.uk)



# STOUR BORDER

## Country Music Club

Nayland Village Hall 7.30 - 10.30  
Admission, usually £5, doors open 7pm  
No bar – please bring your own drinks.  
Tea/coffee & light refreshments available

**SUNDAY 18TH DECEMBER**  
**CHRISTMAS PARTY**  
**'Bonnie Diamond & Co'**  
*A welcome return for this popular duo*

**SUNDAY 22ND JANUARY**  
**'Bob Keeley'**  
*A welcome return for this popular solo star*

**SUNDAY 19TH FEBRUARY**  
**'Country Mile'**  
*A welcome return for this Ipswich duo*





**CAROLS AROUND  
THE VILLAGE  
CHRISTMAS TREE**

Wednesday 21st December  
at 7.30pm  
with Boxted Silver Band



The Annual  
**CANDLELIT  
CAROL SERVICE**

St James Church  
Sunday 18th December  
at 6.30pm

Following the candlelit service,  
with traditional carols and lessons,  
enjoy a glass of wine  
and a mince pie  
before the journey home!

**Nayland  
Baby  
& Toddler  
group**

Bring your child, trained or not, to the Nayland playgroup.

Great for:

- exercise & agility
- sociability
- obedience(!)
- healthy treats

Fridays during term time,  
9.30am - 11.30am at  
Nayland village hall.

**NEW  
team and  
activities for  
the Autumn  
Term**




**Nayland Primary School  
Christmas Fayre**

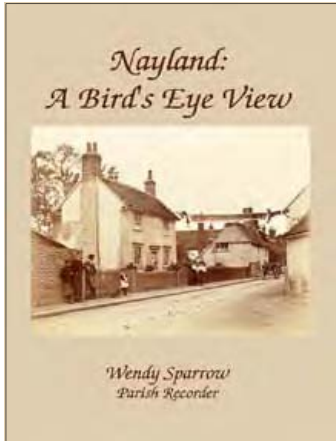
**Friday 9th December**  
**6pm to 8pm**

Santa's Grotto • Refreshments  
Children's activities and games  
Beauty parlour • Jam Jar Lucky Dip  
Bottle Bag Grab • Raffle • Tombola

Adults 50p - Children FREE

*Great family festive fun with all  
proceeds going to Nayland Primary School*





## HISTORY BOOK

### Nayland: A Bird's Eye View

A collection of articles written by the Parish Recorder over the past ten years for the Nayland with Wissington Community Times. The articles are about people and events from Nayland's past, historic buildings and much more.

Available at the Post Office, the Village Stores, Forget-me-not and 17 Court Street, Nayland

Price £7.00



The Old Naga Cottages

Not a lot is known of the early history of the cottages but we know that Dan and Laura Spooner bought them in 1902. Dan was a farmer, well known for horse dealing and the breeding of fox hounds for which he won many trophies. He was also well remembered for horse slaughtering and previously lived and farmed at Farthing Hall, later being over the Anchor for a few years. The cottages were at that time divided into six dwellings, the rent ranging from 1s to 2s 6d per week. Dan also bought two adjacent cottages which were more modern and these were reconstructed to form a house called The Hollies. The 1902 census shows Dan and his wife living at The Hollies and six other families living in the adjoining cottages.

After being damaged at the end of the Second World War, The Hollies was rebuilt and then eventually demolished in the 1950s as it stood in the direct line of the new bypass.

Old maps cannot always be relied on for complete accuracy and on the 1826 Title Map for Nayland, Naga Cottages and The Hollies are shown as being one long terrace divided up into three properties. The cottages had no name at that time but were shown as being opposite Naga Farm and Yard (Naga Corner) which at that time were owned by Sir Joshua Rowley.

(Sources: Nayland Leg Book)

August 2011

# Supper with Strings

## Saturday 11th February

7pm for 7.30pm

at Nayland Village Hall, Church Lane, Nayland CO6 4JH

*Two course supper with a welcome drink*

*Relax and enjoy music by Savoy Strings a classical quartet from Colchester*

*The meal will be prepared by our Village Lunch Team*

*Licensed Bar and Raffle*

Tickets £25 - All proceeds to Nayland Village Hall.

Tickets available with the pro forma below and also available in the Post Office from 16th January

Last date for tickets Wednesday 8<sup>th</sup> February. For further details call 01206 262369

*Supper with Strings, Saturday 11th February 2017*

I would like :..... tickets @ £25 each (Cash/cheque please make cheques payable to: Nayland Village Hall)

Name:

Tel:

Address

Any seating requests please specify below and if possible make a group booking:

Please return pro forma and cheques to Jo Murrison, 11 Fen street Nayland CO6 4HT or Terry Bannister 26 Stoke Road Nayland. CO6 4JD by Wednesday 8<sup>th</sup> February 2017

## HARE & HOUNDS LEAVENHEATH

traditional country freehouse with 3+ real ales  
pool table - open fire - beer garden & patio - play area

### **DON'T FORGET ABOUT OUR BURGER NIGHTS**

Homemade beef burger with all the  
trimmings plus a pint of your choice for £8  
**EVERY WEDNESDAY!**

### **CHRISTMAS DRAW**

Friday 23rd December  
Lots of prizes to be won  
Tickets available at pub

Check out our website for Christmas  
opening hours and more events

#### OPENING HOURS

tuesday, wednesday, thursday 12 - 3pm & 5 - 11pm  
friday & saturday 12 - 11pm  
sunday 12 - 10pm  
closed all day monday

#### FOOD IS AVAILABLE

tuesday - saturday 12 - 2pm & 6 - 9pm  
sunday 12 - 3pm



[www.hareandhoundbleavenheath.co.uk](http://www.hareandhoundbleavenheath.co.uk)

01787 212398

## M & J REGAN

### **Building Contractors**

A local family company who have been trading  
in the area for over 35 years.

01206 264019

07803 604254

[m.regan3@sky.com](mailto:m.regan3@sky.com)

GARDEN DESIGN  
BORDER DESIGN  
PLANT SOURCING  
GARDEN  
OVERHAUL  
GARDEN  
GIFT VOUCHERS



Call Angela for a consultation:

**01787 212264**

**07974 375254**

### **Give your garden the makeover it deserves!**

We are a local garden design  
company and can offer a  
complete design, construction  
and maintenance package  
or just a planting plan for a  
single border.

[WWW.ZINNIADDESIGN.CO.UK](http://WWW.ZINNIADDESIGN.CO.UK)



## **Nayland House** Off Bear Street Nayland CO6 4LA

**We offer long and  
short term care for elderly  
and dementia residents  
in our beautiful home set  
in the heart of the village**

**You are very welcome to  
visit – come and see our  
excellent facilities**

**For more information  
please telephone:  
01206 263199**

## **TURNER & MAY LIMITED**

*Plumbing and Heating Engineers*

[www.turnerandmaylimited.co.uk](http://www.turnerandmaylimited.co.uk)

General Plumbing  
Central Heating Installation  
Energy Efficiency Boiler Installation  
Boiler Maintenance  
Underfloor heating  
Water Softeners  
Bathroom Design & Installation  
Free Estimate

*We offer a fully comprehensive range  
of domestic plumbing and central heating services.*

*Excellent local reputation*

*Over 25 years of experience*

Tel/Fax: 01206 263392

Mobile: 07966 286603 / 07885 075031

Email: [brian@turnerandmaylimited.co.uk](mailto:brian@turnerandmaylimited.co.uk)





## N.P. & S.G. Evans Plumbing & Heating

Hill Farm, Wiston, Nayland, Colchester CO6 4NL  
npsgevens@gmail.com

**Tel: 01206 262091 Mob: 07979 535670**

For all your plumbing & heating requirements.  
Most makes of oil boiler serviced.  
Also guttering maintenance & replacement.

## MAKING YOUR WILL

Retired solicitor Trevor Dodwell is local and  
Through his business he writes  
Wills and Lasting Powers of Attorney.  
He offers a home visit service, thoughtful and friendly  
client care, with career-long advisory experience.  
The fees are surprisingly affordable.

Please call 01206 263420  
or email me at: [trevordodwell@aol.com](mailto:trevordodwell@aol.com)  
**www.thewillbusiness.com**



**Water Lane ARCHITECTS**  
An RIBA Chartered Practice

- Architectural services for new and existing buildings
- Houses, schools, commercial and development schemes
- Designs for greater sustainability — AECB member

Chris Exley, RIBA, AECB  
info@waterlanearchitects.co.uk 01206 890178  
www.waterlanearchitects.co.uk  
Water Lane, Little Horkesley 07827 414847



So Much More Than a Dance Class  
No partners required  
Any age & ability  
All are very welcome

**"Strictly" style Dance-a-cise  
Classes**  
Nayland Village Hall  
every Wednesday morning  
spaces are limited - to reserve yours

**Call Janet on  
07506 350 455**

classes also held in:  
- Capel St Mary  
- East Bergholt  
- Hadleigh  
- Nayland  
- Stratford St Mary

janet@fundancing.co.uk  
www.fundancing.co.uk

 FunDancing  FunDancing.Suffolk

### Nayland Dental and Cosmetic Clinic



18 High Street, Nayland, Suffolk, CO6 4JF

**Family Dentist Teeth whitening  
Children welcome Hygienist**

**PRIVATE DENTISTRY  
AT AFFORDABLE PRICES**  
Free examination for children of school age with full paying adult

**WISHING ALL OUR PATIENTS  
A MERRY CHRISTMAS  
& A PROSPEROUS 2017**

**Gift vouchers available to help  
fill those Christmas stockings**  
**TEETH WHITENING £169**

All treatments carried out by an experienced qualified Dental Practitioner. Dr DG Figg B.D.S.D (SRD)

**Early Morning & Late Evening Appointments Available**  
Call us to book an appointment or request an  
information pack **01206 262262**



**Blue Owl**  
Ceramics Studio  
& Gift Shop

**We are open:  
Monday - Saturday  
9.30am - 5pm**



We have a wide range of gifts and cards for  
all ages, including toys, scarves, jewellery,  
candles, home gifts and more.  
You can also come in for coffee and cake at  
anytime - craft activities are optional!

 **www.blue-owl.co.uk**  
Tel: 01206 263350  
The Mill, Mill Street, Nayland, CO6 4HU. 

## PETER MOSS & SONS

Providing all aspects of  
vehicle maintenance



**68 Bear Street  
Nayland  
Tel: 01206 262866**

**SERVICING ■ REPAIRS**

## BUGG SKIP HIRE

**For All Your Waste  
Disposal Requirements**

- Excellent Service
- Lowest Prices
- Various Sizes to Suit Every Situation



**Tel: 01206 262605**

**[www.buggskiphire.co.uk](http://www.buggskiphire.co.uk)**

The Woodyard, Gravel Hill, Nayland, CO6 4JB



*Gladwins Farm*

*Harpers Hill*

*Nayland*

*Suffolk CO6 4NU*

*Tel: (+44) 01206 262261*

*Fax: (+44) 01206 263001*

*E-mail: [contact@gladwinsfarm.co.uk](mailto:contact@gladwinsfarm.co.uk)*

*[www.gladwinsfarm.co.uk](http://www.gladwinsfarm.co.uk)*

- Award-winning self-catering cottages – sleeping 2–8 people. Charming conversions of period farm buildings, some are designed to be accessible by accompanied disabled visitors, some luxury cottages with private hot tubs.
- Moving house? Longer tenancies in the Winter period can be arranged.
- Swimming lessons throughout the week. Fully air-conditioned in a lovely building. Available for childrens' parties.
- Guests have the use of the pool, sauna, hard tennis court and playground. The lake is stocked with coarse fish. Pets welcome.

*Brochure and details available from Stuart and Susie Bradshaw. 01206 262261*

*[www.gladwinsfarm.co.uk](http://www.gladwinsfarm.co.uk)*



# Tim Allen & Son

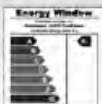


*Established 1994*

Windows, Doors & Conservatories  
Hardwood, Aluminium & PVCU  
Fascias, Soffits, Bargeboards, etc  
Also Extensions & Garden Rooms  
Replacement Sealed Units

**Tel: 01473 827086**

Mob: 07885 437409 or 07909 091691  
timallenwindows@gmail.com



*Insurance Backed Guarantee*

*Matthew Gough*  
MPTA, Btec. HND, C&G Pts 1&2

## PIANO TUNING PIANO SALES AND HIRE



• PIANO TUNING,  
REPAIRS AND  
FULL RENOVATIONS

• QUALITY PIANOS  
INCLUDING YAMAHA MODELS  
FOR SALE OR MONTHLY HIRE!

• VARIOUS MONTHLY RATES  
A GREAT WAY TO TRY A QUALITY  
PIANO BEFORE YOU BUY

Frinton-on-Sea

*Established since 1988 and Fully Qualified  
Covering the Nayland area for over 25 years*

**mpgpianos.com**  
**01255 670780**



## BARNEY THE DECORATOR YOUR LOCAL PAINTER & DECORATOR

Quality Decorating Applied To Last!

Fully Insured - Friendly Professional Service  
No Job Too Big or Too Small

Call Barney for your free quote: 01787 210166 or 07856 540664  
or email: barneythedecorator@gmail.com 3 Harrow Street, Leavenheath CO6 4PW

## PRINCIPLE HEATING SOLUTIONS

Proactive from conception to completion

e: daren@principleheatingsolutions.co.uk  
w: principleheatingsolutions.co.uk

t: 07976 151595



oil  
biomass  
servicing  
installation

Wood  
burners  
chips  
logs  
pellets



Comfortable  
heating with wood

Recommended Installer



**Renewable Heat Incentive (RHI)**  
**Grants available**

Supply and installation of wood burning  
stoves and boilers

Oil boiler servicing and installation

Supply and installation of oil tanks

**Please call or email for your free  
no obligation quote**



74 HUNGERDOWN LANE  
LAWFORD  
COLCHESTER  
ESSEX  
CO1 2LX

## REMEMBRANCE SUNDAY

Nayland marked Remembrance Day initially with a wreath-laying ceremony at the village war memorial. Led by the choir and standard-bearers, the minister's group joined other villagers for the service, including the two-minutes silence, conducted by the Rev Mark Woodrow. Wreaths were laid by John Partridge of the Royal British Legion, parish council chairman Mary George, James Vernon of Nayland fire station, his daughter Jessica of Nayland Primary School and Ann Turner of Bosted Airfield Historical Society.

Afterwards everyone gathered in St James's Church for the main service led by the Rev Woodrow who delivered a moving sermon. Legion president Ken Willingale listed the names of Nayland and Wiston war casualties and James Carver read the lesson.

Earlier a service was held at St Mary's Church, Wiston, where wreaths were laid by Gerald Knox and Martin Booth. Bugler Bill Slark sounded Last Post and Reveille at both venues.

## ARMISTICE DAY

A short service of remembrance and two minutes' silence held at the Nayland war memorial on Armistice Day was well attended. The ceremony was conducted by Royal British Legion chairman Alex Murrison and the Rev Mark Woodrow, priest in charge, led the prayers.

## POPPY APPEAL COFFEE MORNING

A coffee morning held by Nayland branch of the Royal British Legion at the church hall on November 12 raised £220 for the Poppy Appeal.



## EYES DOWN! THE NIGHT THE VILLAGE HALL BECAME A BINGO HALL

Nayland Village hall enjoyed a wonderful night of Bingo on Saturday 12<sup>th</sup> November. Over fifty people attended the event to raise vital funds for the on-going maintenance of the Village Hall.

Dabbers and pens were the order for the night for this highly enjoyable event. A lot has changed since many last played; Maggie's den (10) has been succeeded by many PM's since; the pension age (65) has increased somewhat and the Brighton

line (59) has now been replaced with 01273! Nonetheless modern life did not deter our resident bingo caller Ray Spencer from flawlessly reeling off the traditional bingo slang with the occasional jokes thrown in, which raised many laughs.

However it wasn't just laughs that were raised, there were many glasses of wine raised too, as well as a grand total of £570, which will go towards the vital upkeep of the Village Hall.

In summary a fantastic night, that bought the community together under the roof of our fantastic village hall. Thank you so much to all that were involved in making the night a huge success.





## SEE IT, SNAP IT, SEND IT...

NAYLAND WITH WISSINGTON COMMUNITY TIMES



It's not often you will see Birch Street looking very much as it did a hundred years ago - free of vehicles. This photograph was taken just as recent road re-surfacing was completed but before the white lines were painted.

Thanks to Mary George for capturing this rare scene.

The normal flow of traffic through Birch Street has been disturbed for some time. Prior to closure for resurfacing, traffic lights were in operation as rendering work was taking place at the Old Maltings.

Thanks to Antony Day for capturing this scene.

Insets; an old postcard of Birch Street (dated 1920) and a view we all knew and loved of the Old Maltings with the beams exposed (1999).

View this in the colour version of the CT at [www.naylandcommunitycouncil.org.uk/CommunityTimes.html](http://www.naylandcommunitycouncil.org.uk/CommunityTimes.html)

*If you have a snapshot taken in the parish to feature in a future issue please send it to [lorraine.nayland@btinternet.com](mailto:lorraine.nayland@btinternet.com)*



## VILLAGE NOTICE BOARDS

When using notice boards around the village to promote your Nayland with Wissington community event please be considerate to other users by using drawing pins to put your posters up and NOT staple guns.

Some notice boards clearly request that staple guns are not used. Please also consider the same applies to telegraph poles.



# Nayland with Wissington Society News



## ROYAL BRITISH LEGION

Secretary: Andrew Gowen 262534 parkersag@yahoo.co.uk Chairman: Alex Murrison 262369

We had a most successful visit to the Sizewell Nuclear Power Station and were quite impressed by the way it is being run by the French Company; EDF. It was followed by an excellent pub lunch and our thanks go to Richard Cave for organising it all.

The Armistice Day 2 minutes silence was attended by some 30 people on the Friday 11 November and we appreciated the prayers given by the Revd. Mark Woodrow.

Thank you all for supporting the Poppy Appeal Coffee Morning on the Saturday which made almost £220.

Again our Remembrance Service was well attended and we were lucky that our short service at the War Memorial was bathed in sunshine. The service in the Church which followed was led by Mark Woodrow and his sermon was appreciated by us all. The collection was £337.55 which was up on last year. It was a very successful day.

At our Annual General Meeting on 24<sup>th</sup> October 2016, Jim Turner retired as Standard Bearer and we are fortunate to have Kathy Hunt to take over from him. James Carver has retired as Poppy Appeal organiser and Mark Shirley will take over from him on completion of this year's Poppy Appeal. The Chairman thanked both for their long years of service to the Branch. The following were re-elected: Ken Willingale – President; Alex Murrison – Chairman; John Partridge – Vice Chairman; Richard Cave – Treasurer; Chris Hunt – Welfare officer; Andrew Gowen – Secretary.

We are all looking forward to our Christmas Party in the Church Hall on Monday 12<sup>th</sup> December 2016. The format will be the same as last year at 7.30pm with a short amusing film and Christmas Carols washed down with wine/or similar and small eats which I hope members will contribute!

Our next meeting is at 7.30 for 8pm on Monday 16<sup>th</sup> January 2017 in the Church Hall (not the Anchor) at which James Carver will show a film of the Normandy Beachhead. We will start with a few drinks.

THE ROYAL BRITISH  
LEGION



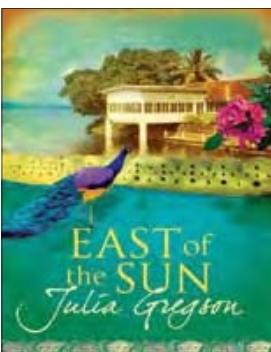
## POPPY APPEAL

Poppy Appeal Organiser:  
James Carver 262970

The total amount raised for the Royal British Legion from the Nayland and District Branch in 2016 was £3,319.27 against £2,938.07 last year.

"This sum could be a record for the branch", said James Carver, Poppy Organiser, "I would like to thank everybody involved with this very satisfactory result."

*Pictured: members of the Royal British Legion prepare to count the Poppy Collection - John Partridge, Alex Murrison, Colin Moule, Malcolm Lukey, Roy Chapman, James Carver, Colin Ramsell & Keith Bannister.*



## BOOK CLUB

Jane Barbrook 263619 janebarbrook@hotmail.com

The book club has about 7-8 members meeting regularly. Anyone interested in joining is welcome to contact Jane Barbrook.

We have been reading a variety of books; the last book was *The Unlikely Pilgrimage of Harold Fry* by Rachel Joyce and the current book is *East of the Sun* by Julia Gregson which we will discuss at our next meeting.

The book club are having their annual Christmas dinner at the Crown at Stoke by Nayland on 5th December.





## NAYLAND ART GROUP

Daphne Berry 262641 Liz Thorne 262664

A series of full to capacity classes have greeted our Tutors Keith Whitlock and Vernon Lever for their recent tutorials in the Church Hall on landscape and still life subjects.

We are now heading rapidly to our final session on 7th December and looking forward to our Christmas Lunch on 14th December, this year at a new location, The Yew Tree at Great Horkesley. Sessions in the Church Hall will resume after the Christmas break on 4th January.

**Colin Ramsell**



## HORTICULTURAL SOCIETY

Sec: Lorraine Brooks 262807  
lorraine.nayland@btinternet.com

[www.naylandhortsoc.org.uk](http://www.naylandhortsoc.org.uk)  
Chair: Trevor Smy 262022



As autumn arrived our activities retreated indoors when on 18th October Simon White returned to Nayland to give a very interesting talk about **'Highlights of Chelsea and Hampton Court'**.

The facts and figures associated with these shows are impressive: 15 months in the planning by the Royal Horticultural Society it takes 800 people 4½ weeks to prepare the site in the Royal Hospital Chelsea for the Show which covers 11 acres, has 600 exhibitors and requires visitor numbers

capped at 157,000. Once Britain's largest flower show Chelsea, first held in 1913, has now been overtaken by RHS Hampton Court Palace Flower Show which was first held in 1990 and covers 34 acres with about 160,000 visitors.

As we travelled through Simon's vast collection of photographs we spotted him mingling with the odd celebrity or royal at the Peter Beales Roses display in the pavilion which he has been involved with for many years. Beales' displays can involve 1500 plants and cost in the region of £70,000 but that is low cost compared to the outside display gardens which often cost £250,000 to £500,000, with extravagant designs costing way over the million mark. Simon also enlightened us on some tricks of the trade; the climbing roses may appear to be huge specimens but are really smaller plants staggered up the pagoda with the pots concealed. With out of season plants required for Chelsea in mid-May and Hampton Court in late June timing is a tricky business involving cold storage of, for example, Narcissus and heated conditions for bringing plants forward. Gnomes had been banned from the show until 2013 but some designers had defied the ruling by having them hidden within their gardens.

Simon brought along some specimen shrubs and roses and unusual garden sundries at bargain prices - tempting us to spoil ourselves and to do some early Christmas shopping!

At the joint meeting with the Conservation Society on **14th November** Edward Martin gave a very enlightening talk on **'The Lost Gardens of Suffolk'**. Documentary evidence on several local grand estates enables researchers to piece together what was on the site and the lifestyles of the owners including Clare Castle, which had been the home of Elizabeth de Clare, one of the richest women in England in the 14th Century. Documents state that: "in 1342 a certain house in the garden was roofed for the Lady's deer [*pro cervis domine*]" and "two men repaired the glass chamber in the house of the pheasants [*pro camera vitrea in domo feysants*]". Shelley Hall was built for Sir Philip Tilney [1517-33]. "A survey for the manor of Shelley 1519-33" states: "The site of the manor of Shelley lies in the east side of the park 'with a garden on the east side ...whiche gardeyn ys bylded with stywes and ponds. And also it is motyd on every side And a duffe house ys byldyd on the south side of the side styws and ponds.'" In his capacity as an archaeologist, Edward had involvement with the Channel Four programme 'Lost Gardens'. One episode featured Shelley Hall in which the site of the moated garden was examined, researched and restored on the site. The programme can be viewed on [https://www.youtube.com/watch?v=urCGtoKZM\\_A](https://www.youtube.com/watch?v=urCGtoKZM_A)

Even closer to home is Tendring Hall. Lady Arabella Rowley died in 1784; in her will she bequeathed to her son William "all the pines and Hothouse and Green House plants that shall be at Tendring Hall at my decease", these were to be sold and the proceeds given to the poor of Stoke. There is a plan which includes an 'elegant Fruit and Kitchen Garden and a Pinery, a Pheasantry, Theatrical [sic] plantations upon the banks of the gardens'. Canals became a fashionable feature in gardens for a while, as did serpentine lakes - the canal and Fishing Temple on the Tendring Estate has been restored.

Gardeners put much of themselves into their gardens and this has been the case for centuries; incorporating their heraldry and elaborate structures. Their properties were also status symbols and visitors were granted access via a route that would give the greatest impression.

HortSoc will be having a stall at the Community Council's **Christmas Family Fayre** on Saturday 3rd December, 10.30am to 1pm in the Village Hall. As usual, donations for HortSoc's raffle would be very much appreciated and can be brought along on the day or left with a committee member.

HortSoc is looking for a new secretary as I will be retiring - if you think you would be able to help please ring Trevor Smy on 262022. I won't be far away to give assistance if required.

In the meantime, the committee has been busy planning the calendar of events for 2017 including the **Spring Show** which will be held on 25th March, so bear this in mind when planting your bulbs and pot plants.

Our activities for 2017 include:

- 21st March:** Spring Speaker: Barry Kaufmann-Wright **'Wildlife in the Garden'**
- 25th March:** **Spring Show** – the schedule is shown on **page 37**, and on the website
- 18th April:** **AGM & Fun Quiz Evening**
- 20th May:** **Morning Market**
- 14th July:** **Summer Garden Party**
- 26th July:** coach outing to **Sandringham Flower Show**
- 5th August:** **Annual Flower Show** – schedules will be available in early March
- 10th September:** coach outing to **Hever Castle**
- 18th October:** Autumn Speaker: Mark Lane LVO, London Palaces, **'Royal Gardens'**
- 14th November:** Joint meeting - Pip Wright *'subject to be decided'*

With best wishes to all for a very Merry Christmas and a Happy New Year.



## NAYLAND WITH WISSINGTON CONSERVATION SOCIETY

Hon. Secretary: Andora Carver 262970  
carversnayland@talktalk.net

[www.naylandconservation.org.uk](http://www.naylandconservation.org.uk)  
Chairman: Mike Hunter 264100

The Court Knoll Project, which is featured elsewhere in the Community Times, is undoubtedly one of the Society's largest and most significant undertakings since the restoration of Horkesley Lock in 1995 and the purchase of the Nayland Meadow in 2004. We are delighted to welcome some new Life Members of the Society, who have joined as a result of being involved with this community activity. More details and photographs of the dig are on the Society's website ([naylandconservation.org.uk](http://naylandconservation.org.uk))

We are also delighted to announce that the Dedham Vale & Stour Valley AONB Project Sustainable Development Fund have made a further grant of £1,500 towards Phase 2 Part 1 of the Court Knoll Project. This is to enable assessment and analysis of finds to take place following the dig.

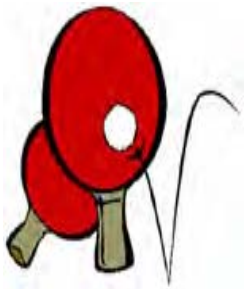
We are still seeking substantial funds for the project and would very much welcome donations from private individuals and local businesses and are most grateful to those who have already supported this appeal, particularly the Community Council and the Dedham Vale Project SDF. Volunteers meet in the Carvers' barn and garden room 2 or 3 days a week. No experience necessary and everyone is most welcome. Please contact Sally Bartrum ([sallybartrum123@btinternet.com](mailto:sallybartrum123@btinternet.com)) or just turn up.

Edward Martin talked about *The Lost Gardens of Suffolk* at a very well attended Joint Meeting with HortSoc on 14<sup>th</sup> November. He told some fascinating stories about how quickly gardens can be overgrown and seemingly disappear, although with a little detective work, they can be revealed again. We were particularly interested to hear about Tendring Park, the man-made creation of the canal (one of 50 in Suffolk) in about 1723 and the Fishing House, now known as the Temple.

We will be having our usual publications and tea towels stall at the Christmas Fayre on 3<sup>rd</sup> December. Volunteers to help on the stall would be welcome.

We are also still looking for a Membership Secretary to help keep our database up to date. Please talk to either Mike Hunter or Andora for more information. This is a largely computer based task but attendance at meetings is always very helpful.

A full year of talks and visits for 2017 is in place. Please see the noticeboard in the High Street or the Society's website for details.



## TABLE TENNIS CLUB

Tony Mann 262492 [ad.mann@homecall.co.uk](mailto:ad.mann@homecall.co.uk)  
Jane Barbrook 263619 [janebarbrook@hotmail.com](mailto:janebarbrook@hotmail.com)

Since the last issue of the Community Times a very significant event for the Club and its members has occurred, that being the very tragic passing of Neil Barbrook, our founder, who will be most sadly missed.

The Club, which was founded by Neil in 2014, has since flourished under his guidance and enthusiasm, supported by his wife Jane, and now has a membership of some 25 people, with regular attendance of 12-16 players.

Playing with four tables, we have plenty of room for everyone, and new members are still very welcome so just come along to the Village Hall to see us on Mondays at 2-3.30pm or ring Tony Mann or Jane Barbrook. No previous experience necessary!

The table tennis club are having their Christmas meal at the Newton Green Golf Club early in December.



## NAYLAND AND DISTRICT WOMENS INSTITUTE

President: Jeannette Finch 262993

Secretary: Lorna Rumsey 01787 211975

We have enjoyed some very interesting speakers over the last few months. Our flower arranging demonstration by Jayne Lawson and Alison Bradshaw was a great success, and three of us visited West Bergholt Flower Club to watch a professional demonstration.

During an interesting talk on *Physiotherapy*, Jackie Grant gave us many tips on how not to fall over !!! and demonstrated some exercises to help.

Four of our members supported the village Quiz, which was fun.

Just after the CT goes to print Revd Canon David Atkins will be talking on *Hatches Matches and Dispatches*, which we will report on next issue.

We are planning an outing to Bridge Farm Barns, at Monks Eleigh and will enjoy a Christmas lunch and we will have our usual stall at the Nayland Christmas Fayre.

The Group Carol Service will be held at Bures this year on the 8th of December and the Federation Carol Service will be at St Mary's Church Bury St Edmunds on the 5th of December.

On 19th December Peter Layzell's talk will be *Tales from a Rural Police Sergeant*.

At our meeting on the 16th January Wendy Sparrow is talking about properties in Nayland and on 20th February James Carver will be giving a talk illustrated with photographs on his travels to South Africa.

If you are interested in joining the WI or would like to come along to any meetings as a guest they are held in the Village Hall at 7.30 pm on the 3rd Monday of the month. We would love to have some new young members.





## THE VILLAGE LUNCH

Jo Murrison 262369

The Village Lunch held on 19th October was attended by 78 people. The Speaker was Mark Mitchels who gave an excellent illustrated talk on The Lost City of Dunwich. The talk and a delicious lunch was enjoyed by all present and a profit of £697 was made for the Village Hall fund.

Our thanks to all our wonderful helpers and all those who attended.

The next lunch will be on Wednesday 26th April 2017. Speaker to be announced.

## SUPPER WITH STRINGS

The village Lunch Team are organising an evening supper with entertainment - **Supper with Strings** - on Saturday 11th February at Nayland Village Hall, 7pm for 7.30. This will be a two course supper with a welcome drink. Musical entertainment will be by Savoy Strings a classical quartet from Colchester. The cost will be £25 per ticket - more details and a booking form can be found on page 15 and available in the Post Office from 16th January.



## NAYLAND CHOIR

Chair: Rob Swan 07954 334548 rob.swan@tb9.uk  
Sec: Cathy Allen cathy.margaret.allen@gmail.com

[www.naylandchoir.org](http://www.naylandchoir.org)  
Twitter at @naylandchoir

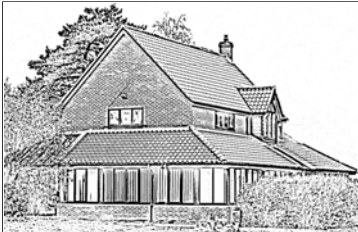
Soon after the Community Times goes to print - on 26th November - Nayland Choir has a concert in St James' Church *Puccini's Messa di Gloria*.

Nayland Choir will be taking part in the annual carol service in St James's Church. There are two rehearsals - on 8th and 15th December at 8.00pm in Nayland School - as well as a final run through in the Church on the afternoon of the service. All welcome to take part in rehearsals with no subs required.

Mendelssohn's magnificent Elijah is Nayland Choir's spring production. The choir is again joining forces with the Bury Bach Choir in a performance on 20th May in St Edmundsbury Cathedral.

The choir will rehearse as usual on Thursday evenings in Nayland School - starting on 28th February at 8.00pm. Nearer the concert there will be some joint rehearsals in Bury St Edmunds. Car sharing will be encouraged, but those who would prefer not to travel to Bury are able to simply take part in the Nayland rehearsals and not the final concert if they would prefer. Subs for the term will be the usual £35.

The Choir is looking for a new accompanist. Jeremy Hughes is retiring as choir leader and his wife Emma, who is our current accompanist will be taking his place. We will be joining with other village organisations to raise money for a new piano to replace the ageing village hall piano.



## NAYLAND SURGERY NEWS

[www.northhillsurgery.co.uk](http://www.northhillsurgery.co.uk)

Rachel Beales, Practice Manager 578070

Thank you to everyone who attended the Flu Vaccination Clinics at our 3 surgeries. So far we have vaccinated 2801 patients aged over 18s with the flu vaccination and 181 patients aged under 18s with the nasal flu vaccination. If you are over 65, have a chronic disease such as asthma, diabetes or are currently pregnant and haven't had your flu vaccination

please contact the surgery to arrange an appointment with our Healthcare Assistant. During our Flu Vaccination Clinics we have raised over £200 for Essex Air Ambulance - a big thank you for all your donations.

Are you eligible for the Shingles vaccination? If you were born between the 2<sup>nd</sup> September 1942 and the 1<sup>st</sup> September 1946 (aged between 70 and 73) or between the 2<sup>nd</sup> September 1936 and the 1<sup>st</sup> September 1938 (aged between 78 and up to 80<sup>th</sup> birthday) you are entitled to a free Shingles vaccination. If you have not received a vaccination and your date of birth falls between these dates please contact the surgery to arrange an appointment with our Healthcare Assistant.

This year our Christmas/New Year opening times will be:

Monday 19<sup>th</sup> - Friday 23<sup>rd</sup> December - Open - 8am-6.30pm.

Saturday 24<sup>th</sup> December - Tuesday 27<sup>th</sup> December (inclusive) - CLOSED

Wednesday 28<sup>th</sup> December - Friday 30<sup>th</sup> December - Open -8am-6.30pm

Saturday 31<sup>st</sup> December - Monday 2<sup>nd</sup> January (inclusive) - CLOSED

Open as usual from Tuesday 3<sup>rd</sup> January 2017.

Don't forget to order check your repeat medication to ensure that you have enough to last you over the Christmas/New Year period.

If you require any medical advice or assistance out of surgery hours, or when we are closed please contact NHS 111 by dialling 111 on your telephone.

Please remember that for many common illnesses and ailments a pharmacist may be able to help. They are able to provide advice and medication for low back pain, heartburn and indigestion, fever in children, constipation, headaches, coughs in adults, sprains and strains, sore throats, earaches, common colds and sinusitis.

If you would like to be more involved in the practice, or have some ideas about the services that are provided, why not consider joining our Patient Participation Group. We hold meetings every few months with our Patient Participation Group members and a combination of clinicians and staff members. If you would like to be involved in our Patient Participation Group, or would like to know more about what is involved please email us at [nhmg.prg@nhs.net](mailto:nhmg.prg@nhs.net)

Finally we would like to thank you all for your continued support and to wish you all a Merry Christmas and a Happy New Year.



## NAYLAND CINEMA CLOSURE

A Walk in the Woods on Friday 30th September was our last film. The VPMC have decided not to continue with this venture due to a variety of reasons: competition from nearby villages, ongoing sound problems and only a small profit.

I have enjoyed running the cinema and I would like to thank those who have helped: Iain Wright, Nick Moriarty, Sara Strover, Gale Scott, Mary Knapp, Rosemary and Gerald Knox. I would also like to thank our loyal supporters.

**Chris Thompson** Secretary V.H.M.C. 262825 christinecthompson@btinternet.com



## OVER 60s CLUB

Secretary: Barbara Smith 501492

President: Eva Rolfe 263151

In November members enjoyed an outing to Perrywood Garden Centre at Inworth; we enjoyed some Christmas shopping and a lovely meal in their restaurant

Our last meeting this year will be a Christmas Tea for members on Thursday 8th December at 2.30pm at the Community Centre at Parkers Way. We do not meet in January but our first meeting in 2017 will be on Thursday 9th February - do pop these dates in your diaries.

More members would be very welcome to come along enjoy refreshments with us and have a chat; we meet on the second Thursday of each month at 2.30pm.

**We take this opportunity to wish you all a very Merry Christmas and a Happy New Year.**

*Diana Whiting*



## NAYLAND LUNCHEON CLUB FOR OVER 60s

A Monthly Lunch for Senior Citizens ~ Church Hall ~ 12.00 noon for 12.30pm ~ £3  
Olga Alexander on 263923

The Christmas Party at Longwood Barn will take place on Tuesday 13th December. In the New Year luncheons will resume again on Tuesday 24 January, Tuesday 28 February and Tuesday 28 March.

Make a note of the dates in your diary and come along and join the friendly atmosphere for a chat with friends, old and new.

If you would like to join us for lunch just come along. If transport down to the Church Hall is difficult telephone Olga Alexander on 263923 to see if we can collect you.



## NAYLAND FUNDRAISING COMMITTEE

Secretary: Caroline Lowe 263852 caroline.m.lowe@btinternet.com

We are delighted to announce that our recent Fundraiser 'Fabulous Festive Flowers' on Friday 11<sup>th</sup> November raised £2,900 for Essex Air Ambulance.

Over 100 people attended this fun event and were shown how to make a variety of different flower arrangements from Beverley of Jade's Flower Design. This was followed by a two-course lunch of lasagne, homemade puddings and a glass of prosecco. There was also the opportunity to purchase floral accessories for our own Christmas displays and Christmas gifts from Fillpots. Some lucky raffle winners won the flower displays that Beverley had made.

We are very grateful to everyone who supports our events by either attending, giving donations or helping us set up and clear away.



## BOWLS CLUB

Secretary: Eva Rolfe 263151

Our winter league started late this year due to holidays, but it has been worth the wait. Our first match was away at Somersham with the first two games one had a comfortable win 14-7 the other was a bit closer but still managed to win 15-12. The second teams were a bit nervous by now wondering what was going to go wrong; they had no need to worry as they both won 20-5 and 15-6. Our first 10-0 win for some time. A week later Martlesham came to us; Again the first two teams had good wins 16-7 and 10-6, somehow the next teams also had good wins 10-8 and 20-6, another 10-0 win this was completely unexpected. On November 2nd Whatfield came to us. Once again the first two games were resounding wins 27-2 and 11-6, the second session just hoped to win and they did 13-6 and 11-7, three 10-0 wins. Unfortunately this left us with only one way to go. On November 9th Bramford came to us. Both the first teams lost 8-16 and 3-13, the second teams fared marginally better one team won 13-6 and the other drew, we came down with a bump defeated 3-7. We just have to keep trying, at least we have a points cushion at the moment.

**Fixtures:** December - 7th Hintlesham home, 12th Burstall away, 19th Brantham away  
January - 17th Martlesham away, Rivers home 31st, Whatfield away

*Sylvia Bond*





## VILLAGE PLAYERS

Chair: Justin Dowding 01206 262217  
jpdowding@gmail.com

[www.villageplayers.co.uk](http://www.villageplayers.co.uk)

Membership: Jill Fernandez 07979 988434  
jillyfern@gmail.com



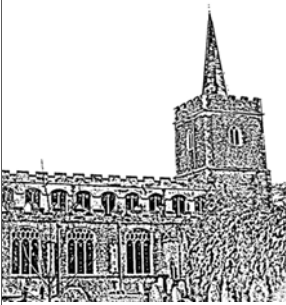
As I write this, the Village Players are in the final few weeks of rehearsals for our pantomime: Cinderella. We will be performing at the Village Hall on December 1st (Thursday) at 6:30pm, Friday 2nd at 7:30pm and Saturday 3rd at 2:30pm and 7:30pm. Tickets for the Saturday Matinee are sold out, but there should still be availability for other dates. Tickets are £7.50 for adults and £6.00 for under-16s. For the December 1st performance, all tickets are £6.00. Tickets are available both at Nayland Post Office (PM) or online at [www.villageplayers.co.uk](http://www.villageplayers.co.uk)

Our next production will be Terence Rattigan's play 'The Deep Blue Sea', considered by many to be his finest work. We are delighted that Chrissie Kettle will be joining us to direct, and performances will be on March 23rd, 24th and 25th. Auditions will be held in the Church Hall, Bear Street, on Wednesday 7th December at 7:30pm and Sunday 11th of December at 5pm. Remember that we don't just need actors: whether it's building sets, lighting and sound, making costumes or sourcing props (for Cinderella, this has included an inflatable leg and a chamberpot), there's a job for everyone!

If you would like further information on getting involved, please get in touch at jpdowding@gmail.com or by calling 01206 262217.



Set building for Cinderella



## THE FRIENDS OF ST. JAMES' CHURCH, NAYLAND

Registered Charity Number 1052641

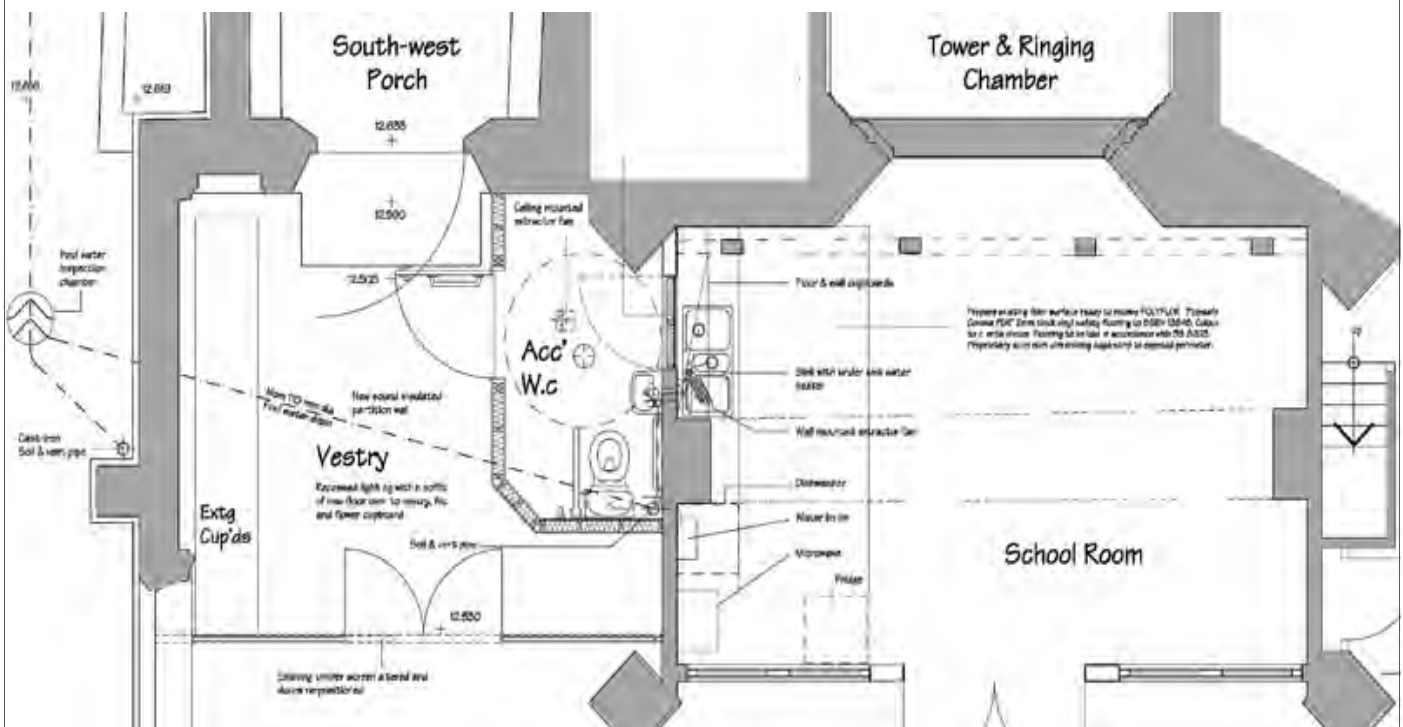
Chairman: Alan Edwards 262800 alan@edwards-online.net

### ANNUAL CANDLELIT CAROL SERVICE :

The Annual Candlelit Carol Service of Carols and Lessons on Sunday 18th December at 6.30pm in St James' Church. Following the candlelit service enjoy a glass of wine and a mince pie before the journey home.

### THE LAVATORY/SERVERY IN ST JAMES'

The new drawings, which we show below, have now been informally submitted to the DAC. We hope to hear in the next few weeks that we will have their support - which will be needed in further and possibly tortuous discussions with other interested organisations. We also need to discuss heating, lighting and decorative finishes that will be needed to complete the project, as well as any equipment. From there, we hope we may be able to start the business of getting quotes in for the work.





## Woodland Corner

Administrator: Nicola Peachey 263054  
e-mail: woodlandcorner@outlook.com

Manager: Cheryl Leeks 263054  
http://woodlandcornernayland.blogspot.com

Registered Charity  
No. 1035330

This Half Term we have been celebrating Diwali and Bonfire Night with lovely Fireworks activities as well as talking about Firework Safety. We have now transformed the Classroom into a "Land of Ice and Snow" and we'll be learning about the Arctic and the animals that live there. Of course we can't learn about the North Pole without learning about its famous resident, Father Christmas!

We will start preparing for our Christmas Nativity Play in December.

A huge thank you to all who helped, baked and sold cakes at Kerridge's at the start of October. We raised a whopping £270.

People are doing amazing things with their first new fiver - First Fiver Donate - why not choose Woodland Corner as your chosen charity? So far we have had £85 donated. Bring your first fiver into Woodland Corner - I'll donate the first new five pound note I get to a charity. Will you? #fivergiver

Our Major Fundraising Project has been installed. Thank you to Evolve Landscapes for working during our half term break to install the fabulous mound with a tunnel, slide and steps for our garden.

Our Christmas Craft Club is now fully booked - look out for new extended schools activities in the New Year. We are running an Easter Holiday on 3<sup>rd</sup>, 5<sup>th</sup>, 10<sup>th</sup> and 12<sup>th</sup> of April, please contact us for further information.

We hope to see you at the Community Council Christmas Fayre on Saturday 3<sup>rd</sup> December where Woodland Corner



will be holding their popular Christmas tombola stall - all donations welcome.



## MESSY CHURCH

Churches of Nayland, Wiston, Leavenheath, Polstead, Stoke by Nayland  
For children and parents: Activities, crafts, worship followed by afternoon tea.  
For further information: Revd Valri Armstrong 262814

**All members of the family welcome for fun art and craft activities and games based around informal worship and afternoon tea.**

At our October Messy Church we explored the theme of light, enjoyed traditional apple bobbing and attempted to eat doughnuts without using our hands or licking our lips!

By the time this goes to print we will have also held our Advent Messy Church in November.

We will be taking a break from Messy Church in December but we will be back, raring to go on Sunday 29th January.

The theme is to be confirmed but messy fun is guaranteed! It will take place at Stoke by Nayland Village Hall, 4pm-6pm. For further information please call Revd Valri Armstrong on 262814.



## HOLLY

We sing about the 'Holly and the Ivy' and prickly green leaves and red berries are everywhere in Christmas decorations.

In Scandinavian countries the holly is even known as the 'Christ-thorn' and it seems that the name of the holly actually came from the word 'holy'.

The holly reminds us of the death of Jesus - the sharp prickles on the leaves are like the crown of thorns that Jesus was forced to wear on the cross. The red berries remind us of the drops of blood that came where the thorns hurt his head.

Holly is an evergreen, which means that it does not lose its leaves in the autumn, but keeps them all year round. And because its leaves are always green it is a symbol of eternal life.

## CHRISTMAS PRAYER

Father, Thank you for creating us and for loving us so much that you sent Jesus to become one of us and to be our way to you. This Christmas may we know the love, peace, comfort and joy that only you can give, no matter what our circumstances. And may we reflect your light and love in this dark world to bring glory to you. In Jesus' name. Amen.

*by Daphne Kitching*





## NAYLAND BABY & TODDLER GROUP

Leaders: *Amelia Knowland on 07887 563779*  
*Karen Tranter on 07970 968882*



Bring your child – trained or not - to the Nayland playgroup  
 Great for: exercise & agility - sociability - obedience(!) - healthy treats

**On Fridays during term time from 9.30-11.30am in Nayland village hall**

Last group before Christmas holidays: Friday 16th December

First group after Christmas holidays: Friday 6th January 2017

'Like' our Facebook page (Nayland Baby & Toddler Group) for news and updates

- themed activities each week
- singing/music sessions
- sit down snack time

Toys for all ages. Something different each week. A great chance to meet other parents and carers over a coffee and a biscuit. First visit is free and then £3 per visit. Contact Amelia or Karen - details above.



## NAYLAND PRIMARY SCHOOL HOME SCHOOL ASSOCIATION

Chairs: Michelle Cottingham [michellecottingham@hotmail.co.uk](mailto:michellecottingham@hotmail.co.uk)  
 Lois Eves [lois.hamiltonprimary@gmail.com](mailto:lois.hamiltonprimary@gmail.com)  
 Sec: Ronnie Egan 01787 210046 [rontone01@sky.com](mailto:rontone01@sky.com)

Lois Eves and Michelle Cottingham have been elected as new Joint Chairpersons. HSA funds will be spent on the following projects: interactive smart boards for two classrooms and development of the reception area.

### CHRISTMAS FAYRE - 9th December 2016 6-8pm

The Christmas Elves are working hard behind the scenes to create another fabulous Christmas Fayre this year. As always, we will have a fabulous selection of stalls for everyone to enjoy including our very popular Chocolate Tombola and Santa's Grotto.

Thank you in advance for your support and donations and we look forward to seeing you on the night

### MAY BALL – Friday 19th May 2017

The **May Ball** is a great fundraiser for grown ups! Where school parents and their family and friends can get glammed up, enjoy a delicious 3 course meal, take part in an auction and raffle and dance the night away!

Tickets for the charity ball cost £55 per person which includes - Reception drinks - Three course dinner - Auction and Raffle - Photographer - Disco. You may book a complete table or individual tickets.

**You could win A bottle of champagne with your meal, Hair Styled for the evening and a free photograph at the Ball if you order tickets before 31st January!!**

## ST JAMES' CHURCHYARD WORKING PARTY



Thanks to our dedicated volunteers and a glorious day the churchyard has never looked in better condition before the winter. We were very lucky with the weather and because of some hard work in advance by Chris Hunter, John Jervois and Trevor Smy, we managed to complete all the main tasks.

Well done, everyone and thank you very much, especially Boudicca for her very tasty cakes.

**James Carver. Churchwarden**

## NAYLAND MOBILE LIBRARY

### Route 20 : High Street P.O.

Saturdays at 10am-11.15am,  
 every four weeks

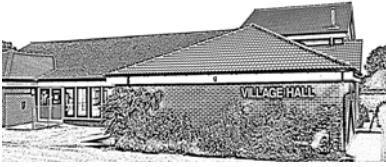
**10 December**  
**7 January**  
**4 February**

### Route 9 : Parkers Way

Saturdays at 3.55pm-4.30pm,  
 every four weeks

**26 November**  
**no visit December**  
**21 January**  
**18 February**

Tel: 01473 263838  
[www.suffolklibraries.co.uk](http://www.suffolklibraries.co.uk)



# VILLAGE HALL MANAGEMENT COMMITTEE

Registered Charity No 304 928

Chairman: Iain Wright 263646

Secretary: Christine Thompson 262825



## OCTOBER COMMITTEE MEETING

### MATTERS ARISING & HOUSEKEEPING BOOK

- Housekeeping and Comments books: There was a comment that the windows in the kitchen are high up and difficult to open. It was agreed to buy a set of steps to make this easier.
- Trevor Smy will be asked to quote for cutting back overgrown foliage around the Hall.
- Suffolk County Council agreed to put up a Village Hall sign opposite the Church Lane entrance and at the junction of Bear St and Mill St. The work has been completed.
- The energy audit report undertaken by the Suffolk Climate Change Partnership was given to the VHMC. Some LED lighting has already been installed and more roof insulation will be put in place when the roof is replaced.
- The kettles have been descaled
- The monthly Fire Safety Check was carried out; no problems were found.
- Signage to fire escape routes has been improved.
- Fire risk assessment recommendations which remain to be carried out; An Assembly Point notice will be installed.
- Two door guard automatic stops have been installed in the doors leading to the hall.

### MAINTENANCE

- Locks will be asked to fix the cover to the key switch near the changing rooms.
- Gary Napper will be asked for a quote to paint the front hall and the arches in the main Hall.

### TREASURER'S REPORT

- letter was sent to the Community Council in response to the VHMC's request for £1000 grant for the Endowment Fund.

### CINEMA

- The last film show did have a good attendance but due to ongoing sound problems the cinema will be closed.

### BOOKINGS

- A new Pilates class will start on Wednesdays 4-5pm
- A zumba class will start on Tuesdays 7.30-8.30pm
- A children's tennis class will start 4.45-5.45pm
- Sara Stover has resigned as Bookings Secretary effective from 17th November.

### AOB

- Emma Bishton & Mandy Cook asked for help in fundraising for a new piano for the Hall. The VHMC agreed that the piano could be stored in the bar in a purpose made cupboard. The VHMC will help with fundraising events.

## NOVEMBER COMMITTEE MEETING

### TREASURER'S REPORT

- COIF Endowment £13,591, COIF £13,978, Bank £12,722 Cash £301, Debtors £0, Assets £10,529
- A review of the hiring charges was undertaken. The VHMC agreed that from next April the hiring charges for casual users of the Hall would be increased by £1 an hour. The charges for regular users will remain the same.

### MATTERS ARISING & HOUSEKEEPING BOOK

- Housekeeping and Comments books: no new entries.
- Fire risk assessment recommendations which remain to be carried out; coloured edging will be placed on fire escape door, an Assembly Point sign will be installed, an alarm cord will be placed in the disabled toilets.
- Two door guard automatic stops have been installed in the doors leading to the hall. Three more will be installed.
- The calendar was read out.
- The autumn Garden Working Party has been set for 19<sup>th</sup> November at 9am.
- The annual Health & Safety Check has been carried out but the report will be completed when access has been obtained to all parts of the hall.

- Action plan quarterly inspection: overgrown foliage around the Hall has been cut back. John Spooner will be asked to clean the gutters quarterly.
- The monthly Fire Safety Check was carried out; no problems were found. The annual 3 hour test will be carried out in December.
- A fridge bulb in the kitchen has been replaced. The light mechanism needs adjusting as well.
- A quotation has been submitted by Gary Napper for the repainting of some of the interior around the foyer. He will be asked to quote for putting up hooks for hanging bunting and flags from.
- The firm of Edward Hyde inspected the floor. It was felt that their last treatment of the floor was inadequate. They will fix the floor in January at no charge.

### MAINTENANCE

- Locks will be asked to repair the flashing light by the front door and put an on/off button on the new cooker.
- David Hewitt will be asked to change the doors on the Community Council cupboard.
- Two neon lights on the stage will be replaced.
- David Hewitt will fix new kick plates to the chair cupboard.
- The disabled toilet in the changing rooms has been repaired. The water leak around the toilet has been fixed.
- David Hewitt has been asked to repair the soffits once the weather has improved.
- The paving at the rear of the Hall has been repaired.

### BOOKINGS

- An advert for new Bookings Secretary and job description will be promoted in the Community Times.
- Webpages: the VHMC login now works.
- Photos of the newly refurbished bar, kitchen and meeting room have been put on the website.
- One licence was signed.
- A detailed Risk Assessment document for the Hall. (see separate sheet). Any alterations will be discussed at the next meeting before it is adopted..

### AOB

- The remote microphone is missing.
- The organiser of Babergh D.C. Funding Workshop was contacted explaining that the expensive renewal of the roof will be necessary in the next 1-2 years. Their reply was that they should be able to help towards the total cost with a grant.

### NEXT MEETING

The next meeting will be **Monday 5th December** at 7.45pm in the Meeting Room.

**The Village Hall Management Committee would very much appreciate some new members joining us.**

We meet once a month in the meeting room of the hall for a couple of hours on the first Monday of the month. If you feel you can give a little of your time to keep this community facility prospering for the mutual benefit of the whole village, please contact any member of the VHMC.

If you would like to know more about the vacancy for **Booking Secretary**, please see the advert on page 2.

### CLASSES & GROUPS IN THE VILLAGE HALL

- Mondays: 9.30 Acrylic Painting, 2pm Table Tennis
- Tuesdays: 10am Yoga,
- Wednesdays: 10am Dance-a-cise, 7pm Carpet Bowls
- Thursdays: 10am Fitness Class,
- Fridays: 9.45am Baby and Toddler Group (term times)

Further details of these classes are available on the village hall bookings website via [www.naylandandwiston.net](http://www.naylandandwiston.net).



## NAYLAND WITH WISSINGTON CALENDAR PHOTOGRAPHIC COMPETITION 2017

The calendar team are now working towards the format of a calendar for 2018. So many people have enjoyed reading the historic notes accompanying this year's pictures that we hope to include something similar next time.

A competition to select thirteen pictures will be held in the Church Hall on the **May bank holiday, on 1st May**.

Photographs which represent our beautiful parish and our thriving community are welcome. This may be scenic views, community activities, street scenes, and any aspects of the parish. So don't miss any photographic opportunities - keep your cameras close over the next few months!

Finally a warm thank you to all who have been involved in the selling of these calendars; the Community Council is so very grateful for your help.

*The Calendar Team, Community Council*



## CLEAN NAYLAND : COMMUNITY LITTERPICK

Although there were fewer volunteers than in the Spring (11 residents including 2 Parish Councillors) we managed to cover most village streets, alleys and green spaces on the Nayland side of the parish. One volunteer washed the dirt from highways signs between the Essex boundary and Bear Street instead of picking litter, but of course this did not remove the graffiti from those signs.

We collected just 10 bags overall, a great improvement over the Spring event. The Harpers Hill Reserve and layby, plus the A134 in that section only, produced two and a half bags. Most of it had probably been thrown from vehicles as it consisted of fast food packaging, drinks cans, bottles and takeaway coffee cups including one neatly tied carrier bag

packed full of plastic bottles and packaging that had been dumped on the verge. The worst area was from Gravel Hill junction along Stoke Road to the parish boundary which produced two heavy bags of litter. It is likely that most of that was thrown from vehicles too. However, we were unable to cover the Heights or Harpers Estate, the footpath from Anchor Bridge steps beside the river, or the footpath to Horkesley Lock Bridge and the lock area this time. Many thanks to all the volunteers, to Mike Hunter for organising the provision of bags, pickers, hi vis jackets from Babergh and Andora Carver for providing refreshments and storage at Carvers Barn.

Many thanks to all the volunteers, to Mike Hunter for organising the provision of bags, pickers, hi vis jackets from Babergh and Andora Carver for organising the litter pick, providing refreshments and storage at Carvers Barn.

*Mary George, Community Litterpick Group*

## GARDEN WASTE & BONFIRES



With winter approaching and gardens in need of a final tidy the question of what to do with our garden waste comes to the forefront. There are various options for disposal; composting at home, using Babergh's Brown Bin Scheme, taking the rubbish to Household Waste and Recycling Centres such as:

- **Hadleigh:** Crockett Way (off Lady Lane Industrial Est) IP7 6RH
- **Sudbury:** Sandy Lane (off Ballingdon Hill) CO10 7HG
- **Colchester:** Maldon Road, Shrub End CO3 4RN

### Another option is to have a bonfire...

The bonfire takes its name from the medieval bon-fire of animal bones. While modern day bonfire ingredients are on the whole less gruesome, burning waste materials can cause pollution and local nuisance.

Occasionally a bonfire is the best practicable way to dispose of woody or diseased waste that cannot be composted. If you chose this option please adhere to the guidelines:

- Speak to your neighbours, see if you can agree a time and site for the fire.
- Do not light it when your neighbours' washing is out or their windows are open.

- Avoid lighting a fire in unsuitable weather conditions – smoke hangs in the air on damp, still days. If it is too windy, smoke blows into neighbours' gardens and windows and across roads. In the evenings pressure keeps the smoke down.
- Avoid burning at weekends and on bank holidays when your neighbours have a right to enjoy their gardens
- Never use petrol or oil to light a fire
- Ensure that only dry material is burnt. This will produce the minimum of smoke.
- Do not burn plastic, rubber, household rubbish, or other materials which cause dark smoke and noxious fumes
- Never leave a fire unattended or leave it to smoulder - put it out

There are no specific controls, such as permitted times, over the lighting of domestic bonfires to burn waste. However, smoke and emissions from a bonfire (or any other process of burning) can be considered a Statutory Nuisance. Environmental Health is responsible for investigating complaints.

### If You are Troubled by Bonfire Smoke...

- Try talking to those responsible for the bonfire. They may not be aware that they are causing a problem and a reasonable approach may encourage a reasonable response.
- If this fails, environmental health at your local council should be notified. They must investigate your complaint and must issue a notice under the Environmental Protection Act 1990.

# Garden Notes

by The Old Muckspreader



The OM/S came across an article recently about the pruning of trees, which stipulated that the following should be dealt with in autumn rather than spring. Acers (the Maple family), Birches, Cherries and Magnolias. This was to avoid the risk of sap bleeding. He can add another to the list - Walnuts. Many years ago, when he lived in Nayland his garden rose in a steepish slope behind the house; at the top there was a wired to prevent rabbit incursion where he grew vegetables. His neighbour's garden was similar, but the top was mostly occupied by a fine old Walnut tree. One branch grew over the boundary, and as time went on it came to overshadow his vegetables. One day in late February he decided to take action, and omitting the courtesy of asking the neighbour's permission sawed off the end of the branch (by now at least 2 inches thick) where it crossed the fence. The next day he was half way down the garden when he heard what sounded like water coming out of a hosepipe. Walking up to the top he saw sap spouting out of the cut branch and forming a large puddle in the soil. He managed to staunch the flow by means of tags and sealing wax, and by the next day it was reduced to a dribble, enabling him to make a permanent repair with grafting wax. The neighbour who was old and didn't venture far up his garden in winter never appeared to notice what had happened; the Walnut suffered no harm and was flourishing when he left several years later. Enquiries to a subsequent owner reveal that the tree had vanished by the Millennium, probably removed in an intervening makeover. Two of its progeny flourish here, providing food for squirrels and carrion crows.

While on the subject, there's no need to prune woody plants as a routine job. Dead wood should always be removed, but otherwise 'If in doubt, don't cut it out'.

Moles have again become a nuisance here, venturing some distance into the side lawn. To remove their heaps of spoil, which incidentally make excellent potting medium, on no account just trample them down; this course will just leave large bare patches. Collect the soil from the outside working inwards towards the centre of the molehill. The residue of the soil can be brushed away (look out for stones) with a besom if you have one, otherwise a stiff brush.

The plant of the month is *Ceratostigma Willmottianum*, named after the redoubtable Miss Willmott, who raised the first plants in England from seed collected in China. It's a small shrub growing to about 4 feet with green foliage just now beginning to produce good autumn colour, and flowers of a brilliant pale blue from September until the advent of frosts, a decent long period. This is a choice plant, not found in the average garden centre, but available from decent nurseries.

A happy Christmas and successful gardening in 2017 to all our readers.

## WORDSEARCH: Autumn Interest Trees & Shrubs

## ANAGRAMS: Festive Food & Drink

E	L	P	A	M	E	S	E	N	A	P	A	J	V	I	M	O	E
L	D	I	T	M	E	G	I	N	K	G	O	B	I	L	O	B	A
P	M	T	Q	M	O	E	D	A	H	O	E	P	A	H	J	T	S
A	I	S	X	U	D	A	T	H	O	E	Y	A	E	S	T	I	U
M	E	M	E	H	I	S	P	I	C	T	M	E	M	U	C	L	O
D	C	H	L	O	U	D	J	H	A	R	C	O	W	N	C	O	K
L	O	T	P	R	O	L	A	U	O	D	K	N	D	U	N	P	S
E	L	W	A	Y	S	O	N	M	W	E	Y	G	O	R	T	T	U
I	X	D	M	L	Y	A	V	S	B	J	L	H	O	P	N	R	N
F	E	O	D	E	W	H	O	U	Z	A	E	K	A	O	D	E	R
B	E	A	E	O	D	A	S	A	R	C	R	S	O	H	O	E	O
A	P	E	R	X	R	H	U	S	T	Y	P	H	I	N	A	Z	C

- 1 WELLDUNIME
- 2 SPINECIME
- 3 ROTTYURSAKE
- 4 NALSIGPINKSTEB
- 5 STRECSTRUBSTUN  
&SLOUSHES
- 6 REBSAYCRUNACE
- 7 DUPPGLINDUM
- 8 DAMZELAGH
- 9 GOLLEYU
- 10 SKATICREMACHS
- 11 TROVELSEF

BEECH

CORNUS KOUSA

FIELD MAPLE

GINKGO BILOBA

JAPANESE MAPLE

KATSURA

LIQUIDAMBAR

PRUNUS

RED MAPLE

RED OAK

RHUS TYPHINA

ROWAN

SMOKE BUSH

TULIP TREE

Wordsearch words may be horizontal, vertical, or diagonal and forward or backwards

**Solutions on page 46**



## CLAY TOBACCO PIPES

Amongst the many fascinating objects dug up on Court Knoll during the six week dig in September/October, it was interesting to see quite a lot of pieces of clay pipe. Unfortunately there were no complete pipes but some thirty years ago I found a whole bowl of a quite unusual pipe in the ditch surrounding the Knoll. Clay pipes were first introduced into this country at the end of the 16<sup>th</sup> century, long after the first known occupation of Court Knoll, so it is not surprising that the pieces of pipe found there were fairly near the surface.

Who made the first clay pipe is not known but the idea probably came from the

American Indians who used them for medicinal purposes and religious ceremonies. The craft of making these pipes began in England soon after the introduction of tobacco in 1558. The earliest pipes were made by hand and later by the use of brass and iron moulds. Although the form of the pipe remained much the same during its long and interesting history, variations in style and size of the bowl occurred as well as in the length of the stem.

In the early days pipes were very small and the stems were 4 to 6 inches long. They were sometimes given names, such as fairy pipes, old man's pipes or plague pipes because of the large numbers found in plague pits during excavation work in London. People were encouraged to smoke clay pipes in the belief that they would ward off the disease. By the mid 17<sup>th</sup> century the bowl had become much larger and the stem longer, from 10 to 14 inches. Craftsmen were becoming more skilful and elaborately decorated pipes were beginning to appear. During the 18<sup>th</sup> century extra long pipes, called aldermen or straws with stems 18 to 24 inches long, became fashionable with the gentry. After 1850 pipes about 36 inches long called churchwardens were introduced, but these were obviously not very practical and a shorter version called short churchwardens was made. However, the 19<sup>th</sup> century working man preferred his ordinary short pipe, sometimes known as a nose warmer, which was cheap and often given away with a pint of beer by the local publican.

By 1650 there were at least a thousand pipe makers in London and many others in other large towns. The trade expanded so that most towns in England had at least one pipe making family. Between 1670 and 1740 the popularity of snuff, brought over from France and considered to be a more elegant habit, caused a recession in the trade. In the 19<sup>th</sup> century factory production was introduced and led to the decline of the trade as a cottage industry.

Victorian businessmen used pipes as an advertising medium with illustrations and slogans of every description and many bowls were shaped to represent heads of well known characters of the day, members of the Royal family or even human skulls.

By 1914 clay pipe manufacture as an industry had virtually come to an end leaving only a few makers to meet the demand of those who enjoyed its cool smoke and slow burning properties, including Masonic and other societies for after-dinner smoking. However, during the 1960s there was a resurgence in the use of clay pipes caused by the formation of



*The Nayland Pipe Smokers' Club at the Anchor in the 1930s*

the Pipe Club of Great Britain. Competitions were held at branch meetings to find the smoker who could keep a 9 inch pipe going the longest without relighting.

Locally, by the middle of the 17<sup>th</sup> century Colchester, Ipswich and Norwich are known to have had pipe factories. During the demolition of an old building in Colchester High Street in 1959/60 a Colchester archaeologist discovered a tobacco-pipe kiln which according to town records was in existence in 1688. There were 14 pipe makers known to have worked in Colchester but in a directory of 1902 only one in George Street remained and the business had gone by 1910, having been there for over a century.

In White's Directory of Suffolk for 1855 only Ipswich and Beccles had pipe makers whereas in the 18<sup>th</sup> century makers had been active also at Woodbridge, Sudbury and Bury St Edmunds.

The widespread habit of cigarette smoking, which was introduced into this country during the Crimean War and became popular in the 1870s, all but killed clay pipe smoking in England. Also the general rise in prosperity enabled remaining pipe smokers to buy the more long lasting briar pipes.

Blowing bubbles with clay pipes was a popular pastime with children until the 1950s. They were also used as targets at fairground shooting galleries. A popular sport was to knock a clay pipe out of the mouth of a head, commonly known as Aunt Sally, which was perched on the end of a pole with a clay pipe sticking out of its mouth. It is thought that this sport could have been intended as a deterrent for lady smokers!

Here in Nayland we had our very own Pipe Smokers' Club which met at the Anchor. The photograph shows a group of enthusiasts during a competition in the 1930s, all smoking short stemmed pipes, aiming to see who could keep their pipe going the longest without it going out. Bert Beady, first on the left in the front row, was the landlord of the Anchor and, I imagine, the referee ensuring fair play. Next to him are Arthur Osborne, Ray Osborne and Dan Spooner. Behind him is Tom Bugg and in the middle of that row Stan Hatten.

Like other residents in the village we have found many pieces of clay pipes in our garden over the years. Every time the soil is turned over pieces appear and one can imagine former occupiers digging their gardens while happily puffing away on their clay pipes, tossing them aside when they broke and perhaps replacing them with new ones from the pub.

**Wendy Sparrow, Parish Recorder**

*[Sources: Clay Tobacco Pipes, Shire Publications Ltd; Clay Pipes in Essex & East Anglia by LS Harley, Nayland Record]*



# THE COURT KNOLL PROJECT



Following some good geophysical survey results in 2015, the previous exposure of walls on the site in 1924 and records dating from Domesday, earlier this year we applied for permission from Historic England and the Tendring Hall Estate to excavate seven trenches on Court Knoll in September. This was successful.

We were grateful to obtain funding from the Dedham Vale Project Sustainable Development Fund, the Conservation Society and the Community Council. With fantastic support from over 80 volunteers, we managed to open up and dig all seven trenches. Everyone thoroughly enjoyed digging, scraping, sifting, washing and sorting the finds. The weather was amazing, with only a single wet afternoon in six weeks. Nayland residents put in over 260 volunteer days and members of the Colchester Archaeological Group and Stour Valley Community Archaeology slightly more. This was a tremendous effort, which was recognised by the experts who frequently visited the site.

David Andrews, Chelmsford Diocesan Archaeologist said: *"This is one of the most exciting sites of the medieval period I have seen in the East of England."*

Edward Martin, the distinguished Suffolk archaeologist commented, *"Your group has done an outstanding piece of work and I hope they are all feeling very pleased about the results."* We certainly do!

Well, what did we actually find? As our archaeologist, Linzi Everett said, *"This is not Time Team and we can't provide a fully illustrated and dated interpretation of the site just yet. The excavation has amassed a wealth of new knowledge and*

*information in terms of finds, records, photographs and plans that will all be analysed over the coming months"* by volunteers under the guidance of experts, *"to find out more about the active life and subsequent decline of the manorial complex which was a major part of the settlement of Nayland"* – possibly around the time of the Norman Conquest.

How exciting it will be to peel back more pages of Nayland's history from 950 years ago. We will keep you posted as more information is revealed.



*Day 1 opening up Trench 1 which later revealed beautifully laid stone walls with corners edged with re-used Roman floor tiles and remains of a beaten chalk floor inside the building.*



*The walls and inner apse/tower show clearly in this composite drone image. Further excavation is necessary to identify this and we are hopeful this will be permitted next year by Historic England - provided further funding can be obtained.*





Clockwise from above:

- The fallen arch in Trench 2. The loose demolition material was carefully scraped away to reveal the curved line of mortar below the re-used Roman tiles, which shows clearly that the original structure was either a doorway or window arch which fell over – probably when the building was being “robbed” for re-usable building materials in the middle ages.
- Pieces of a horse's jawbone and oyster shells from Trench 4.
- Volunteers enjoy a well earned break
- Volunteers enjoy the sunset after the End of Dig Tea Party

**Andora Carver, Project co-ordinator  
& Sally Bartrum, Volunteer co-ordinator**





## CONSERVATION SOCIETY by Pat Bray

A fascinating account of the Court Knoll Project and its findings was heard by members of Nayland with Wissington Conservation Society at their October meeting.

The project, which involved digging seven trenches on the Knoll, has revealed all kinds of discoveries including pieces of Tudor plates, Roman tiles, animal bones, medieval fragments, oyster shells and two silver coins.

Chairman Mike Hunter said the dig was of national importance and would not have taken place without the drive and enthusiasm of the society's secretary Andora Carver, who had taken part in the exercise daily with her husband James.

Started on September 2, he said the dig was backed by Suffolk Archaeology and was due to end on October 16. There had been a huge response from volunteers, both from Nayland and outside the village. The society was grateful to the Tendring Hall Estate for permitting the dig and Blue Owl who provided free bottled water.

Detailing the cost of the project, Mr Hunter said the society would be looking for further financial assistance for the next phase and he hoped the Dedham Vale Project and Nayland Community Council would make more funds available.

Dr Tim Dennis, who led the dig, screened numerous slides illustrating how work on the Knoll had progressed in the various trenches and the specialist equipment used.

Mrs Carver said the project had followed a successful test pit dig in November 2014. She showed a selection of

photographs and thanked all the volunteers. More than 70 people of all ages had applied and between 10 and 18 helpers were on site daily.

Visitors had included representatives of Historic England and the Tendring Hall Estate, two classes from Nayland Primary School and Dr Ronald Blythe. Among the finds were two silver coins – one dating probably from 1216 – and the other a Tudor penny.

All the finds will be analysed and Mrs Carver added she hoped one day to repeat the exercise.

Former chairman John Alexander presented Dr Dennis with a gift from the society and gave a vote of thanks to everyone involved in the Court Knoll Project.

## SUFFOLK BEREAVEMENT SUPPORT

### *'Easing loss through group support'*

Recently bereaved or suffering a delayed reaction to loss?

Are you in need of help and support?

Why not join a small focused group, of 5-10, sharing bereavement issues?

Groups are led by an experienced facilitator creating a warm, safe environment in which to explore the many aspects of loss.

Groups are free and open to Suffolk residents able to attend the Hadleigh venue.

For more details or to reserve a place contact

Patrick or Margaret

Web site: [www.sbsg.eu](http://www.sbsg.eu)

Email: [sbsg246@gmail.com](mailto:sbsg246@gmail.com)

Tel: 01206 299832

SBS is a not-for-profit charity working with 'Community Action Suffolk' in setting up this new service (registration CAS2398/16)

**Christmas & New Year Waste & Recycling Collection Schedule 2016/17**

**BABERGH DISTRICT COUNCIL**  
Please ensure your bins are presented by 06:30am on the day of collection.

	Usual Collection	Revised Collection	Change
Recycling	Monday 19 December	Monday 19 December	No change
	Tuesday 20 December	Tuesday 20 December	No change
	Wednesday 21 December	Wednesday 21 December	No change
	Thursday 22 December	Thursday 22 December	No change
	Friday 23 December	Friday 23 December	No change
Refuse	Monday 26 December	Tuesday 27 December	1 day late
	Tuesday 27 December	Wednesday 28 December	1 day late
	Wednesday 28 December	Thursday 29 December	1 day late
	Thursday 29 December	Friday 30 December	1 day late
Recycling	Friday 30 December	Saturday 31 December	1 day late
	Monday 2 January	Tuesday 3 January	1 day late
	Tuesday 3 January	Wednesday 4 January	1 day late
	Wednesday 4 January	Thursday 5 January	1 day late
	Thursday 5 January	Friday 6 January	1 day late
	Friday 6 January	Saturday 7 January	1 day late

There will be no brown bin collections over Christmas and New Year (between 26th December and 6th January)  
Please check [www.babergh.gov.uk](http://www.babergh.gov.uk) for further details  
From Monday 9th January normal waste and recycling collections resume  
**Waste Helpline: 01449 778678**

## Paint it, Paper it, Love it!

Stockists of Farrow & Ball, Little Greene and Paint Library designer paints.



Decorating, Glass & Building Centre  
Layer Road, Colchester CO2 9JY  
Phone 01206 216048  
[sales@kentblaxill.co.uk](mailto:sales@kentblaxill.co.uk)  
Twitter: @KBColchester Facebook: /KentBlaxill  
Buy online [www.kentblaxill.co.uk](http://www.kentblaxill.co.uk)







# Nayland & District Horticultural Society Spring Flower Show

on Saturday 25th March 2017 in the Church Hall

- Classes:
1. Pot of spring bulbs, corms or tubers (*other than Daffodil/Narcissus*)
  2. Pot of 5 Daffodil/Narcissus bulbs any colour or variety
  3. Pot miniature Daffodil/Narcissus bulbs
  4. Pot of Polyanthus or Primula (Primroses)
  5. Flowering houseplant
  6. Non-flowering houseplant
  7. 3 blooms (*any one variety*) floating in a dish of water
  8. Flower arrangement: 'A Host of Daffodils' (*to be predominantly Daffodils*)
  9. Flower arrangement: 'Spring Fever' (*max size 12" overall*)
  10. Vase with 3 stems of Hyacinths
  11. Vase of mixed flowers and/or flowering shrubs
  12. Vase of one kind of flowering shrub or tree
  13. Vase of 3 Tulips (*any variety/varieties*)
  14. Vase with 1 bloom Camellia
  15. Vase of 6 assorted Daffodil/Narcissus
  16. Vase of 6 Miniature Daffodil/Narcissus
  17. 3 specimen Daffodil/Narcissus blooms (*any one variety*)
  18. Rhubarb: 3 stalks, leaves trimmed, but if forced foliage should remain

This is an advance notice to enable you to plant up your entries!

More information will be available in later issues of the Community Times, or [www.naylandhortsoc.org.uk](http://www.naylandhortsoc.org.uk) or Lorraine 262807 [lorraine.nayland@btinternet.com](mailto:lorraine.nayland@btinternet.com)



We need you today  
You may need us tomorrow



## Tim & Linda's Hedge Veg

Thank you for your incredible donation of

**£185.50**

East Anglian Air Ambulance is proud to serve the communities of Bedfordshire, Cambridgeshire, Norfolk and Suffolk.

08450 669 999

[www.eaaa.org.uk](http://www.eaaa.org.uk)

Registered Charity No. 1083876



**ARE YOU  
GETTING  
A BIKE FOR  
CHRISTMAS?**

Do you need to get  
rid of your old one?

**Re~Cycle**

Bicycles to Africa

UK Charity 1063570  
[www.re-cycle.org](http://www.re-cycle.org)



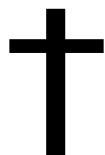
If you have an unwanted bike of  
ANY description  
EITHER Take it to the Re-Cycle Depot  
Unit 8, The Grove Estate,  
Colchester Road,  
Wormingford, CO6 3AJ

OR CONTACT

Iris Sebba on 01206 262632

who may be able to collect in your local area

Re~Cycle collects secondhand bicycles and ships them to Africa. Our partners distribute the bikes and teach riders the skills to repair and maintain them. Since 1998 over 42,000 bikes have been shipped to 13 African Countries.



## FIVE PARISHES CHURCH SERVICES: DECEMBER & JANUARY

Nayland, Wiston, Leavenheath, Stoke by Nayland & Polstead

<i>Date</i>	<i>Time</i>	<i>Venue</i>	<i>Service</i>	<i>Priest / Leader</i>	<i>Time</i>	<i>Venue</i>	<i>Service</i>	<i>Priest / Leader</i>
<b>27<sup>th</sup> November</b> <i>Advent 1</i>	8.00am 10.30am	Nayland Leavenheath	HC 2 Benefice	Revd Mark Woodrow Revd Mark Woodrow	4.00pm	Stoke	Messy Ch	Revd Valri Armstrong
<b>4<sup>th</sup> December</b> <i>Advent 2</i>	8.00am 9.30am 10.00am	Stoke Nayland Leavenheath	HC 2 HC 1 First Sunday	Revd Mark Woodrow Revd John Fowler Revd Valri Armstrong	11.00am 5.30pm 6.30pm	Polstead Wiston Stoke	HC 2 Evensong Evensong	Revd Mark Woodrow Revd Mark Woodrow Jane Addis
<b>11<sup>th</sup> December</b> <i>Advent 3</i>	9.30am 9.30am 11.00am	Leavenheath Nayland Polstead	HC 1 & B Café Ch MW	Revd Mark Woodrow Congregation Congregation	11.00am 11.00am 4.30pm	Stoke Wiston Leavenheath	HC 2 MW Carols [Hall]	Revd Mark Woodrow Derek Johns Revd Valri Armstrong
<b>18<sup>th</sup> December</b> <i>Advent 3</i>	11.00am 11.00am	Stoke Wiston	MP HC 1 trad	David Rowe Revd Mark Woodrow	3.00pm 6.30pm 6.30pm	Polstead Nayland Leavenheath	Carol Serv Candle Carols Ev Praise	BW Revd Mark Woodrow Revd Valri Armstrong
<b>24<sup>th</sup> December</b> <i>Christmas Eve</i>	3.00pm 3.45pm 4.30pm	Stoke Leavenheath Nayland	Crib Service Christingle Christingle	Revd Mark Woodrow Revd Valri Armstrong Revd Mark Woodrow	5.00pm 6.30pm 11.30pm	Polstead Stoke Stoke	Christingle Candle Carols Midnight Mass	Revd Valri Armstrong Revd John Fowler Revd Mark Woodrow
<b>25<sup>th</sup> December</b> <i>Christmas Day</i>	8.00am 9.30am 9.30am	Leavenheath Wiston Polstead	HC 1 F Eucharist F Eucharist	Revd John Fowler Revd Mark Woodrow Revd Valri Armstrong	11.00am 11.00am	Stoke Nayland	F Eucharist F Eucharist	Revd Valri Armstrong Revd Mark Woodrow
<b>1<sup>st</sup> January</b> <i>Christmas 1</i>	8.00am 10.30am	Nayland Leavenheath	HC 2 First Sunday	Revd John Fowler Revd Valri Armstrong				
<b>8<sup>th</sup> January</b> <i>Epiphany</i>	9.30am 9.30am 11.00am	Leavenheath Nayland Polstead	HC 2 Café Ep. MW	Revd Mark Woodrow Congregation Congregation	11.00am 11.00am 4.30pm	Stoke Wiston Nayland	HC 2 MW Evensong	Revd Mark Woodrow Derek Johns Kathy Hunt
<b>15<sup>th</sup> January</b> <i>Baptism of Christ</i>	8.00am 10.30am	Nayland Polstead	HC 2 Benefice NB	Revd Mark Woodrow Revd Mark Woodrow	6.30pm	Leavenheath	Ev Praise	Revd Mark Woodrow
<b>22<sup>nd</sup> January</b> <i>Epiphany 2</i>	9.30am 9.30am 11.00am	Leavenheath Nayland Polstead	MP HC 1 HC 1	David Rowe Revd Mark Woodrow Revd Mark Woodrow	11.00am 11.00am	Stoke Wiston	MP HC 1 trad	David Rowe Revd Valri Armstrong
<b>29<sup>th</sup> January</b> <i>Epiphany 3</i>	8.00am 11.00am	Nayland Hadleigh	HC 1 Deanery	Revd Mark Woodrow	4.00pm	Stoke	Messy Ch	Revd Valri Armstrong

**Key:** FS : Family Service, FC : Family Communion, HC 1 / 2 : Holy Communion 1 or 2 , PC : Parish Communion, MP : Morning Prayer, MW : Morning Worship, MS : Morning Service, EP : Evening Prayer, Ev Praise : Evening Praise, B : Baptism, Benefice NB : Benefice New Beginnings, Café Ch: Café Church, Café Ep.: Café Epiphany, F Eucharist : Family Eucharist



### CHRISTMAS FLOWERS IN ST JAMES' CHURCH

Donations for flowers for decorating the Church for Christmas would be gratefully received, and can be given to Jo Murrison, 11 Fen Street or Jeannette Finch Rose Cottage, 5 Fen Street.  
Many thanks to all our Flower Arrangers who keep our church looking so welcoming throughout the year.  
**Jo Murrison 262369**

### Weekday Services and Groups

Bible Study 18 Laburnum Way (*Rita Dibble 262580*): Mondays 11am 28th Nov, 12th December 9th & 23rd January, 6th & 20th February  
Parkers Way Communion: Tuesdays 10.15am 20th December, 17th January, 21st February (*3<sup>rd</sup> Tuesday of month*)  
Parkers Way Prayer & Praise Service: Wednesdays 3pm 7th December, 5th January, 1st February (*1<sup>st</sup> Wednesday of month*)  
Nayland House Holy Communion: Wednesdays 10.45am 7th December & 4th January  
Messy Church Sundays 4pm-6pm: 27th November & 29th January at St Mary's Church, Stoke Village Hall (*usually last Sunday of month*)

### Other Dates for your Diary

Sunday 18th December Candlelit Carol Service at St James at 6.30pm

Wednesday 21st Dec Carols Around the Christmas Tree with the Boxted Silver Band





*Dear All,*

This time last year, I was privileged to lead a group on a Pilgrimage to the Holy Land, to sites so familiar to many of us from the Bible and particularly the Nativity and Easter stories.

One of the reasons I like to take groups at this time of the year, is so that we can begin the season of Advent with time in Bethlehem, the place where Jesus, as the Gospel of John tells us God, "... became flesh and lived among us..."

(The Church of the Holy Nativity, Bethlehem)

Advent is observed during the four weeks leading up to Christmas, and it is a season of expectation and preparation, as the Church prepares to celebrate the coming (*latin.adventus*) of Christ, and looks ahead to his final advent as judge at the end of time.

Advent season falls at the darkest time of the year, and the natural symbols of darkness and light are powerfully at work throughout Advent and on into Christmas. In Church, as in many homes, we have adopted the tradition of lighting candles on an Advent wreath, with each candle representing a different focus of our prayers and thoughts:

**Candle 1: The Patriarchs** (Lit on the first Sunday of Advent – 27<sup>th</sup> November 2016)

Focus is on Abraham, our father in faith, and David, the ancestor in whose city of Bethlehem Jesus was born.

**Candle 2: The Prophets** (Lit on the second Sunday of Advent – 4<sup>th</sup> December 2016)

We reflect on the way the birth of the Messiah was foretold, such as in Isaiah.

**Candle 3: John the Baptist** (Lit on the third Sunday of Advent – 11<sup>th</sup> December 2016)

We remember that it was John, who proclaimed the Saviour.

It is also known as 'Gaudete' Sunday from the traditional opening line of the prayer "**Gaudete, gaudete! Christusestnatus**" (*Latin. Rejoice, Rejoice! Christ is Born*). It was incidentally the words of this prayer which Maddy Prior and Steeleye Span had a hit with in 1972!

**Candle 4: The Virgin Mary** (Lit on the fourth Sunday of Advent – 18<sup>th</sup> December 2016)

God's obedient servant who bore the Christ child in her womb

**Candle 5: The Christ** (Lit from Christmas Eve)

The light of the world, bringing light out of darkness.

So, as we prepare for the coming of the Prince of Peace, I wish you and all those whom you care for, a blessed Advent and when it comes, a joyful and peace filled Christmas.

.... and if you have ever wanted to visit the Holy Land yourself, why not join me next year, when I will be leading a group from Stoke by Nayland, Leavenheath, Polstead, Nayland and Wiston, from 28<sup>th</sup> November to 7<sup>th</sup> December 2017. Call or email me for more information.

**We are God's children, we seek the coming Christ. Maranatha! Come, Lord Jesus!**

*Mark*

## Church News

### WISTON TENNIS TOURNAMENT

On Monday 19th September the Friends of Wiston Church held a fundraising Ladies tennis tournament. A total of 34 players signed up and had an excellent morning of tennis on 4 different courts in Wiston followed by a grand final and lunch at Rushbanks House. We were extremely lucky with the weather and a good time was had by all.

The total sum raised was just short of £700 which will go towards various projects on the church building including renovation of the porch.

Names of the winning 4 were Annie Del Mar, Cara Fenwick, Fi Crace and Amanda Gerry.

## CHURCH CONTACT DETAILS ON PAGE 47

Priest in Charge:

**Revd Mark Woodrow**

The Vicarage

Bear Street, Nayland CO6 4LA

01206 262150

revdmarkwoodrow@gmail.com

W: [naylandchurches.wordpress.com/](http://naylandchurches.wordpress.com/)

F: [facebook.com/naylandchurches/](https://www.facebook.com/naylandchurches/)

T: @NaylandChurches

### Weekday Prayer

Tuesday

Morning Prayer 8.30 am Leavenheath

## FROM THE REGISTERS



### FUNERALS

Neil Barbrook

### BURIAL OF ASHES

Colin Bray

## SAD NEWS FOR NAYLAND FARMERS' MARKET

After two years of trading, the doors of Nayland Farmers' Market will close for the last time on December 10<sup>th</sup>.

In November 2014 Suffolk Market Events took over the running of the market which had been in decline for some time and, with some vital funds made available through the Dedham Vale AONB Sustainable Development Fund, the future of the market looked positive. However, in the last eight months there has been a steady decline in the number of customers coming through the doors and, even with continuous marketing, it has not been possible to increase and maintain a good level of support.

Last Saturday an apple pressing event was held at the market which again was partly funded by the AONB and which did attract a really good number of people but as Justine Paul, owner of Suffolk Market Events points out "the farmers' market cannot survive on an increased footfall only when an event is held. The support of local, rural markets needs to be consistent and sadly, for a number of reasons, we have not managed to achieve this in Nayland."

A meeting was held after the market and a significant majority of producers, together with Justine, decided that the market would cease trading after the December market.

'I feel really sad that Nayland farmers' market is going to close' says Justine 'I work tirelessly to promote small scale local producers but Nayland farmers' market had become economically unsustainable and, as a group, we had to make a decision. We would like to thank those customers who have shown their loyal support and the AONB Sustainable Development Fund for their financial input. We very much hope to see lots of familiar faces at the market in November and December.'

Nayland Farmers' Market will be held on Saturday December 10<sup>th</sup> when all the regular producers will be in the village hall and information will be available for customers regarding other markets where the producers can be found.

For further information please contact Justine Paul at [Justine@suffolkmarketevents.co.uk](mailto:Justine@suffolkmarketevents.co.uk)

Spring Series of 9 Lectures  
at Stoke-by-Nayland Village Hall  
From Thursday 12th January 2017, 7.30 pm



## 'Red October : Lenin & the Russian Revolution'



One of the great events of global history, the Russian Revolution, changed the shape of the contemporary world at great cost to the Russian people. This course will study the causes of the revolution, the reasons for the October coup (1917), and seek to explain why Lenin and the Bolsheviks were able to win a Civil war and secure power against all the odds.

Our lecturer **Simon Doney** is a local lecturer in Further and Higher Education and has taught classes for the WEA over a number of years.

**Fees: Adult £48** (payable after the first session)  
Try the first session (free).  
For further information please contact Sue Whiteley.  
Phone: 01787 210945 or email: [whiteleysa@hotmail.co.uk](mailto:whiteleysa@hotmail.co.uk)

**Future Events**  
AGM on 6th April 2017, 7.30 pm  
'Submarines' by Richard Channon  
Summer School, 15th July 2017  
Talk & visit to **Landguard Fort**,  
Felixstowe

WEA is a company limited by guarantee registered in England number 280095 and an unregistered charity number 1112775

## Feedback from James Finch - Your Stour Valley County Councillor

### EARLY YEARS FOUNDATION STAGE PROFILE RESULTS

Provisional figures which have been published by the Department for Education show an increase in Suffolk children achieving a good level of development and achievement in their Early Years Foundation Stage (EYFS) results. These include key areas of learning and development such as communication and language; physical development; and personal, social and emotional development.

In Suffolk 70.2% of children achieved a Good Level of Development (GLD) this year. This is slightly above the rest of England. The percentage of children eligible for free school meals achieving a GLD compared with those not eligible, has also improved this year. This means the gap between the groups has narrowed by 7% points.

It is particularly pleasing to note the improvement seen for children eligible for free school meals across the county. The results include a group of children who first received a free place at two years old rather than aged three, because their parents were eligible, for economic reasons. To find out if a two year-old is eligible for free childcare, visit <https://www.suffolk.gov.uk/children-families-and-learning/childcare-information-and-support-for-parents-and-providers/guidance-for-parents-and-carers/free-early-learning-for-2-year-olds/>

All children, no matter their family circumstances, are entitled to free early education (childcare) from the term after their third birthday up until they start school full time. More information can be found here: <https://www.suffolk.gov.uk/children-families-and-learning/childcare-information-and-support-for-parents-and-providers/guidance-for-parents-and-carers/>

### GREATER ANGLIA RAIL - SUFFOLK RAIL CONFERENCE

Rail network infrastructure requirements needed to deliver the new Greater Anglia Rail Franchise were the key topics discussed at this year's rail conference held in October in Ipswich.

Improving track capacity, signals and level crossings are just some of the areas required for improvement to support new rolling

stock and additional train services, which have been confirmed as part of the new Greater Anglia rail franchise contract announced.

This annual conference is a key date in the diary each year in helping to lobby Government and rail organisations to deliver better East Anglian passenger and freight rail services. The new passenger franchise is the reward for this effort but there is still more to do for the Suffolk's residents and businesses to make it a reality in the next decade.

### BE SAFE AND SEEN IN SUFFOLK

Suffolk County Council has worked in partnership with BBC Radio Suffolk to launch a new road safety campaign this autumn – 'Be Safe and Seen in Suffolk.'

The campaign will see over 12,000 badge reflectors given to primary school aged children, which can be worn on their coats or backpacks to reflect the beam of vehicles in darker conditions to ensure that children are seen as they walk with friends and parents.

A major part of undertaking this campaign was the determination to promote exercise, walking and physical activity amongst young people. It was understood that to achieve this, the children and their families needed to feel safe before stepping out during the darker months. So the reflector campaign was born!

The campaign is part of Suffolk's Year of Walking, which celebrates walking in Suffolk, promotes walking events and encourages new walking opportunities. Suffolk County Council's Road Safety Team and Public Health Team have invested £9,550 into the campaign to deliver enough reflectors to benefit over 60 primary schools across the county.

I officially launched the campaign at the Suffolk Show with BBC Radio Suffolk.

**James Finch, Suffolk County Councillor, Stour Valley Division**  
Assington, Boxford, Bures St Mary, Edwardstone, Groton, Leavenheath, Lindsey,  
Little Cornard, Mildenhall, Nayland with Wissington, Newton, and Stoke by Nayland  
Tel 01206 263649 Mobile 07545 423796



## KENNY'S SESAW NEWS



Here we are again, at the end of another year, approaching another festive season. Apologies for my unenthusiastic intro but like everyone at SESAW, my little heart is very heavy just now. It's difficult to be cheery as Mum's dear husband, Ron, passed away recently.

The two of them started animal rescue decades ago, right here in their own home. My canine pals, Barney, Daisy and Tyler were Dad's constant companions are nearly as inconsolable as Mum but

everyone has been very kind. SESAW is closed, except by prior appointment and the wonderful Volunteers are working hard to keep the Sanctuary running as smoothly as possible.

We are grateful to all our supporters, both at this sad time and throughout the year. Without all these good people, SESAW could not exist. Despite our sorrow, animals in need continue to arrive. If you are looking for a family pet or companion to share your hearth please get in touch and someone will contact you as soon as possible. Meanwhile, best wishes for a happy, healthy and safe Christmas from me, **Kenny (the Boss) Chihuahua.**

Suffolk & Essex Small Animal Welfare, Stoke Road,  
Leavenheath, CO6 4PP (Reg. Charity No.1124029)  
Tel: 01787 210888 [www.sesaw.co.uk](http://www.sesaw.co.uk)

## L'Enfance du Christ

by Hector Berlioz



THE JANUS ENSEMBLE, LONDON  
THE PIMLOTT FOUNDATION CHOIR

Choral Director - Christopher Borrett  
Music Director - Michael Coleby

SATURDAY 10 DECEMBER 2016

ST PETER'S CHURCH, NORTH HILL, COLCHESTER, CO1 1NZ

Concert starts 7.30pm

Tickets £15, £8 students & children

[www.pimlottfoundation.org](http://www.pimlottfoundation.org) / 01206 271291

THE PIMLOTT  
FOUNDATION

kindly supported by



## A.S. Ironing Services

All your ironing needs  
Occasional or weekly  
Free collection and delivery  
Fully insured  
Established 2004

Tel: 01787 228036 after 4pm  
or Mob: 07790 344090  
Annette Southernwood

JMAC INTERIORS  
Specialist Painters & Decorators  
Est. 1997

- All Interior and Exterior Work Undertaken
- Specialist in Period & Listed Properties
- Wallpaper Hanging to the Highest Standards
- Restoration of Ornate Cornices & Ceiling Roses
- References Available
- Fully Insured



Contact: Jeff Macdonald



Tel: 07778 031505 - 01787 224674  
Email: [jmacinteriors@aol.com](mailto:jmacinteriors@aol.com)  
[www.jmac-interiors.co.uk](http://www.jmac-interiors.co.uk)



## "Yet another superb safari, tailor-made for us by Jane"

Birding, horse-riding, photographic, 4x4, walking. Bookings ATOL / AITO bonded.



Jane Walker, Independent Safari Consultant  
Farthing Hall, Nayland with Wissington  
[www.safari-consultants.com](http://www.safari-consultants.com)  
01206 262352, [JaneW@safari-consultants.com](mailto:JaneW@safari-consultants.com)

# Theatricool

Performing Arts School

INNOVATIVE, INDEPENDENT, INSPIRATIONAL

---

**THEATRICOOL PERFORMING ARTS SCHOOL - ESTABLISHED 2009**  
 QUALITY PART TIME PERFORMING ARTS TRAINING FOR STUDENTS AGED 2-16



**NAYLAND**

**Little Stars Drama**  
 For ages 4-6 years  
 3.30 - 4.30pm  
 Term-time Mondays  
 at Church Hall,  
 Bear Street, Nayland

**Also offering....**

- Saturday performing arts schools
- Parties
- Studio hire
- Holiday schools and workshops



Season's greetings to all our students and parents.

Join us for the new term in January 2017!

Theatricool Studio, St Pauls Hall, Belle Vue Road, Colchester CO11XA  
 t: 0773 6713909 e: sally@theatricool.co.uk www.theatricool.co.uk

## MR. WHEELER

Since 1883

Visit our specialist wine cellar today!

### NOW OPEN

---

**Wednesday to Saturday, 10am to 6pm**

Extended Christmas opening times:  
 Open Sunday 4th December, 10am to 4pm and  
 Wednesday 7th December through to Christmas Eve  
 Please visit [www.mrwheelerswine.com](http://www.mrwheelerswine.com) for full details

Offering a selection of high quality wine for entertaining and everyday enjoyment, from small, independent vineyards; plus unmissable deals on a great range of fine wine.



visit [www.mrwheelerswine.com](http://www.mrwheelerswine.com) or call 01206 713560

**Mr. Wheeler's Wine Cellar is our shop in Dedham.**  
 Birchwood Farm, Birchwood Road, Dedham, Essex CO7 6HX

*we choose better wine™*

## WistonGallery

Modern Art & Contemporary Design for You & Your Home




Contemporary art and designer hand crafted products including jewellery, hand blown glass, ceramics, hand woven and screen printed textiles, designer mid-century modern furniture, printed cards, gift wrap, complimentary accessories and gifts for you & your home

---

Open Tuesday - Saturday  
 10am - 5pm

[www.wistongallery.co.uk](http://www.wistongallery.co.uk)  
 Tel: 01206 262840  
 e: hello@wistongallery.co.uk

Nags Corner  
 Wiston Road  
 Nayland CO6 4LT



## The Quay School of Theatre Dance

---

Classes held in Sudbury  
 and  
 Ixworth nr Bury St. Edmunds  
 Pupils accepted from 3 years to adult

**EXAMS • SHOWS  
 SUMMER WORKSHOPS**

For further details please contact:  
 Mrs Marie Morris A.I.S.T.D, Dip. C.D.E.  
 Telephone: 01359 271057  
 Mobile: 07766 290161  
 email: [quaydance@hotmail.co.uk](mailto:quaydance@hotmail.co.uk)  
[www.quaydance.co.uk](http://www.quaydance.co.uk)



*Ballet - Modern - Jazz  
 Tap - Street - Fitsteps*

**Quay Dance**

**IMPERIAL SOCIETY OF TEACHERS OF DANCING**





# ANCHOR INN

NAYLAND

## December

### Sunday Lunch with Santa

4th, 11th & 18th December

Meet Santa and enjoy a delicious Sunday lunch with a gift for all children dining.



## January

### 2 for 1 Dining

Visit our website to claim your 2 for 1 Voucher.  
T&C apply.



The Anchor Inn, Nayland • 01206 262313 • [www.anchorinnayland.co.uk](http://www.anchorinnayland.co.uk)

**COMPUTER TROUBLE ? CALL US NOW!**

**01787 321177    01206 587047**

### THE I.T. SOLUTION hub!

We are a friendly computer repair company in Nayland Road Bures. You are more than welcome to visit us or we can visit you. We offer

Same day service with NO call out fee. Advice is always free! We can help with pretty much anything from desktop and laptop repairs, spyware/virus removal, computer and laptop upgrades, computer clean ups, remote support and monitoring.

**10% OFF WHEN YOU QUOTE THIS ADVERT**

[theitsolutionhub.co.uk](http://theitsolutionhub.co.uk)  
[info@theitsolutionhub.co.uk](mailto:info@theitsolutionhub.co.uk)  
 01787 321177  
 01206 587047



**VIRUS REMOVAL**



**NEW COMPUTERS**



**UPGRADES**



**BACK UPS & DATA RECOVERY**



**LAPTOP REPAIR**



**PC REPAIR**



**MONTHLY SUPPORT**



**PRINTERS**



**NETWORKING**

## MARY - ANNE MORRISON

MILLINERY



**INDEPENDENT MILLINER**  
 Providing a ready-made and bespoke service



01206 262391 | 07850 571879

[www.mamorrison.co.uk](http://www.mamorrison.co.uk) | [hats@mamorrison.co.uk](mailto:hats@mamorrison.co.uk)

## Matthew Douglas

*Forward Thinking Independent Financial Advice*



**"Matthew Douglas successfully helped organise my personal finances following a number of unexpected and life changing events"**

Mr Patel

**New Model Adviser**

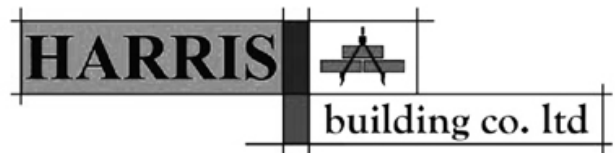
**TOP 100**

**2014**

To talk with one of our fully qualified staff or to book an appointment to meet us in person, call us on 01206 265904

[www.matthewdouglas.co.uk](http://www.matthewdouglas.co.uk)

Matthew Douglas Ltd is authorised and regulated by the Financial Conduct Authority (226918)



We are a local building company with many years experience working on new and period country houses and cottages.

.....

For new build, conversions, maintenance, repair and joinery, for design and construction and for planning and listed building applications

.....

Telephone us on  
Nayland (01206) 263632

Or email  
[info@harrisbuilding.net](mailto:info@harrisbuilding.net)  
and you will find us at  
[www.harrisbuilding.net](http://www.harrisbuilding.net)

**BOYDENS**  
*Built on service and trust*

*A house with many doors*  
...whatever your property needs, we can help

Branches: Braintree, Clacton-on-Sea, Colchester,  
Frinton-on-Sea, Kelvedon, Sudbury

**boydens.co.uk**

Member No. G033

**MAKE IT A GOOD MOVE**

**ASK US FOR ADVICE ON MOVING**

- UK door to door
- Storage services
- Commercial archive storage
- European door to door
- Commercial office moves
- Packing materials included

**Good Move Removals & Storage**  
Unit 1, Holly Lodge, Holly Lane, Great Horkesley, Colchester CO6 4AW

**Colchester 01206 272780**  
**Sudbury 01787 378515**  
**Ipswich 01473 288110**

Email [guy@goodmove.org.uk](mailto:guy@goodmove.org.uk) Website [www.goodmove.org.uk](http://www.goodmove.org.uk)

**WHITTLES**  
CHARTERED ACCOUNTANTS

**Count on us to help you with your tax returns**

Business advisory, tax, audit and accounting services for companies, charities, trusts and individuals

The Old Exchange, 64 West Stockwell St, Colchester, Essex CO1 1HE  
Telephone: **01206 762200**

15 High Street, West Mersea CO5 8QA  
Telephone: **01206 385049**

[www.whittles.co.uk](http://www.whittles.co.uk)



## SMALL ADVERT COLUMN

Nayland and Wiston residents may place free adverts for items valued at under £50. Items £50 and over incur a charge of £5.

### GIVING AWAY:

**JOHN LEWIS 'ERIC' COT** used, but in excellent condition, with mattress. Available for pickup from Nayland. Call/Text Justin on 07805 648935.

### FOR SALE:

**WII CONSOLE** boxed, stand, remote, nunchuck, sensor bar, Wii Sports games, all internet cables. £20. Nayland 01206 262331

**WII MARIO CART** boxed, wheel, remote, game cd. £5. Nayland 01206 262331

### TO ADVERTISE CONTACT:

Lorraine Brooks 262807 Lorraine.nayland@btinternet.com

### FREE:

#### BAGS OF SHREDDED PAPER

Available from Matthew Douglas, 4 Church Mews (opposite Post Office) between 9-5, or telephone 265904.

### WANTED:

**WANTED CHIPBOARD FURNITURE** any condition will collect. 01787 211975

**POSTAGE STAMPS** for East Anglian Air Ambulance. Please leave them in box in the Post Office.

**UNWANTED BICYCLES** for Re-cycle Bicycles to Africa, www.re-cycle.org. Contact Iris Sebba 262632 or take them to the Re-Cycle Depot: Unit 8 The Grove Estate, Colchester Road, Wormingford CO6 3AJ Tel: 01206 617 865

**BATTERY RECYCLING** – box in the Post Office.

## Hunnaball of Colchester

Family Funeral Service



York House, 41 Mersea Road  
Colchester, CO2 7QT

01206 760049

www.hunnaball.co.uk

**Spingold**  
Design & Print

The Studio | Harpers Hill | Nayland  
Colchester | Essex | CO6 4NT

*Stuck for present ideas this Christmas?*



Calendars

Christmas Cards

Canvas Wraps

Playing Cards

www.spingold.co.uk

01206 262751

## ST. JAMES' CHURCH HALL HIRE CHARGES

<b>Monday – Friday</b> (Hourly Rates)	£5.00
<b>MINIMUM CHARGE</b> (2 hours)	£10.00
<b>Weekends</b> (Hourly Rates)	£6.00
<b>MINIMUM CHARGE</b> (2 hours)	£12.00

During Winter: Heating Vouchers @ £1 each

Bookings: online at [www.naylandandwiston.net](http://www.naylandandwiston.net)  
or Anna Boon 262780 [annaboone@btinternet.com](mailto:annaboone@btinternet.com)  
Collect Key from 43 Bear Street

## NAYLAND VILLAGE HALL HIRE CHARGES (from 1 April 2014)

Inc: Hall, Stage, Kitchen & Bar - Changing Rooms: £20 extra per session  
Licence to provide Alcohol £20 extra

Sunday – Friday Hourly Rates	Residents	Non Residents
9am – 6pm (April-Sept)	£10.00	£13.50
9am-6pm (Oct-March)	£11.00	£15.50
6pm-midnight (April-Sept)	£11.00	£15.50
6pm-midnight (Oct-March)	£12.00	£17.50

**MINIMUM HIRE: 2 HOURS RESIDENTS – 3 HOURS NON RESIDENTS**

### Saturday

Daytime until 6pm	Hourly Rates as above	
Evening 6pm-midnight	£140.00	£210.00
All day until 6pm	£90.00	£110.00
All day until 6pm with playing field	£140.00	£160.00
Playing Field only	£50.00	£50.00
Playing Field & Changing Rooms	£70.00	£70.00
Meeting Room only (3 hour session)	£15.00	£21.00

Reduced terms for use of the hall over a period can be negotiated  
with the Treasurer, Peter Mann on 262830

Bookings: online at [www.naylandandwiston.net](http://www.naylandandwiston.net) or  
**07748 953175 [naylandvillagehall@yahoo.co.uk](mailto:naylandvillagehall@yahoo.co.uk)**

## WORDSEARCH



## ANAGRAM & WORDSEARCH SOLUTION

1 Mulled Wine, 2 Mince Pies, 3 Roast Turkey, 4 Pigs in Blankets, 5 Brussels Sprouts & Chestnuts, 6 Cranberry Sauce, 7 Plum Pudding, 8 Glazed Ham, 9 Yule Log, 10 Christmas Cake, 11 Leftovers



Saturday 24 <sup>th</sup> December	Usual Service
Sunday 25 <sup>th</sup> - Tuesday 27 <sup>th</sup>	No bus service
Wednesday 28 <sup>th</sup> - Saturday 31 <sup>st</sup>	Usual Service
Sunday 1 <sup>st</sup> & Monday 2 <sup>nd</sup> January	No bus service
Tuesday 2 <sup>nd</sup> January	Services as normal

## SCHOOL TERM DATES 2016/17

Autumn term ends: 20 December  
Spring Term 2017 begins: 4 January  
Spring Half Term: 13 – 17 February

## BUS TIMETABLES Service 84 (NS = Not Saturdays, Sch = Schooldays only, SHol = Saturdays & weekdays during School Holidays only)

From 30 November 2015

Sudbury – Newton Green – Assington – Leavenheath – Stoke by Nayland – Nayland – Gt Horkesley – General Hospital – Colchester

Monday to Saturday	NS	Sch	SHol					Sch	SHol		
Sudbury, Bus Station	0630	0655	0705	0915	1130	1330	1415	1500	1508	1630	1730
Great Cornard School	.....	.....	.....	.....	.....	.....	.....	1520	.....	.....	.....
Nayland, Doctors Surgery	0713	0743	0753	1003	1218	1418	1503	1555	1555	1718	1818
Colchester General Hospital	0728	0800	0808	1018	1233	1433	1518	1610	1610	1733	1833
Colchester North Station	0733	0805	0813	1023	1238	1438	1523	1615	1615	1738	1838
Colchester Stanwell Street	0740	.....	0820	1030	1245	1445	1530	1622	1622	1745	1845
Norman Way Schools	.....	0825	.....	.....	.....	.....	.....	.....	.....	.....	.....
Monday to Saturday	NS	NS Hol						Sch	SHol		
Norman Way Schools	.....	.....	.....	.....	.....	.....	.....	1550	.....	.....	.....
Colchester Stanwell Street	0725	0755	0855	1055	1255	1455	1605	1605	1605	1655	1755
Colchester North Station	0734	0803	0903	1103	1303	1503	1613	1613	1613	1703	1803
Colchester General Hospital	0740	0809	0909	1109	1309	1509	1619	1619	1619	1709	1809
Nayland, Doctors Surgery	0756	0825	0925	1125	1325	1525	1635	1635	1635	1725	1825
Great Cornard School	0840	.....	.....	.....	.....	.....	.....	.....	.....	.....	.....
Sudbury, Bus Station	0856	0910	1010	1210	1410	1610	1720	1720	1720	1810	1910

For more information: **Chambers Coaches**

Tel: 01787 – 375360

[www.chamberscoaches.co.uk](http://www.chamberscoaches.co.uk)



# LOCAL INFORMATION

Mobile Library	Saturdays 4-weekly alternating between: High Street & Parkers Way. See page 21 for details
Post Office	High Street Tel: 262210 Early Closing on Wednesday
Doctors Surgery	93 Bear Street Tel: 262202 (out of hours emergency 01206-578070 or NHS 111)
	Surgery hours: Mon-Fri 8am-6pm (telephone service until 6.30) www.northhillsurgery.co.uk
	Scheme Manager: Ellen Salmon, 15 Samford Close, Holbrook Tel 01473 328458
Parkers Way	Head Teacher: Raegan Delaney Tel: 262348
Primary School	Sec: Ronnie Egan 01787 210046 rontone01@sky.com
Home School Association	Manager: Cheryl Leeks 263054 http://woodlandcornernayland.blogspot.com
Nayland Playgroup	Administrator: Nicola Peachey 263054 e-mail: woodlandcorner@outlook.com
Woodland Corner	Jayne Kennedy 262348
Primary School Choir	Amelia Knowland 07887 563779 Karen Tranter 07970 968882 - Fridays 9.30-11.30am Village Hall
Nayland Toddler Group	Bookings: 07748 953175 naylandvillagehall@yahoo.co.uk Caretaker: Mrs Y. Spooner 262691
Village Hall	Bookings: Anna Boon 262780 stjameschurchhall@yahoo.com
Church Hall	Hon Sec. Andrew Gowen 262534
Royal British Legion	Sec: Lorna Rumsey 01787 211975 - 3rd Monday each month 7.30pm Village Hall
Womens Institute	Sec: Barbara Smith 501942 President: Mrs Eva Rolfe 263151 - 2nd Thursday each month
Over 60s Club	Sec: Mrs Eva Rolfe 263151
Bowls Club	Jane Barbrook 263619 Tony Mann 262492 Mondays 2pm-3.30 Village Hall
Table Tennis Club	Daphne Berry 262641 Liz Thorne 262664 - Wednesdays 2-4pm (term times)
Nayland Art Club	Sec: Lorraine Brooks 262807 Chair: Trevor Smy 262022
Horticultural Society	Hon Sec Andora Carver 262970 Chair: Mike Hunter 264100
Conservation Society	Chair: Justin Dowding 262217 Membership Sec: Jill Fernandez jillyfern@gmail.com
Village Players	Chair: Rob Swan 07954 334548 rob.swan@tb9.uk
Nayland Choir	Will Hitchcock 263169 - info@transitionnayland.co.uk - www.transitionnayland.co.uk
Transition Nayland	Karen Elliott 263233 kazelli@btinternet.com
First Response	Chair: Alan Edwards 262800 alan@edwards-online.net
Friends of St. James Church	Sec: Caroline Ross-Stewart 263701 wistonfriends@gmail.com Ch: Bill Stirling 262397 billstirling@hotmail.com
Friends of Wiston Church	Father Peter Brett 01473 372703 www.sudburywithhadleigh.net
Roman Catholic Church	Tel: 01787 227233 www.chamberscoaches.co.uk
Chambers Buses	PC 1455 Matt Paisley Tel: 101 (non-emergency) number
Local Police	Babergh East SNT email: babergheast.snt@suffolk.pnn.police.uk
Police Safer Neighbourhood Team	Tel: 01473 822801 (Main Switchboard) Corks Lane, Hadleigh, IP7 6SJ www.babergh.gov.uk
Babergh District Council	Melanie Barrett melanie.barrett@babergh.gov.uk 01787 211126
District Councillor	James Finch James.Finch@suffolk.gov.uk 263649 Rose Cottage, 5 Fen Street CO6 4HT
Suffolk County Councillor	james.cartlidge.mp@parliament.uk 0207 219 4875 House of Commons, London SW1A 0AA
James Cartlidge MP	

PARISH COUNCIL	COMMUNITY COUNCIL	VILLAGE HALL COMMITTEE
<b>Clerk:</b> Debbie Hattrell 01787 378649 pc@naylandwithwissington.suffolk.gov.uk 5 Churchill Drive, Sudbury CO10 1NZ <b>Chairman</b> Mary George <b>Vice Chairman</b> - <b>Councillors:</b> Russell Badrick, Gerald Battye, Martyn Booth, Kathleen Cannings, Patricia Fuller, Ian Harris, Graham Walker. <b>Parish Recorder</b> Wendy Sparrow <b>Tree Warden</b> Terry Bannister <b>Footpath Warden</b> Sally Bartrum <u>Meetings:</u> 7.30pm second Wednesday of month in the Village Hall Committee Room <u>Minutes:</u> PC notice board in High Street	<b>Chairman</b> (vacancy) <b>Vice-Chair</b> Colin Ramsell 264006 <b>Secretary</b> Lorraine Brooks 262807 <b>Treasurer</b> Maggie Ryan <b>President</b> Ken Willingale <b>Vice-President</b> Bryan Smith <b>Executive:</b> Tricia Hall, Julie Clark, Rachel Hitchcock, <b>Individual:</b> Claire Buller, Vicki Sargent, John Parsonson, Colin Moule, Iain Wright <u>Meetings:</u> 9 January, 6 March AGM, 3 May, 5 July, 6 Sept, 30 Oct 8pm Church Hall (Exec 7.30)	<b>Chairman:</b> Iain Wright 263657 <b>Secretary</b> Chris Thompson <b>Treasurer</b> Peter Mann <b>Vice Chairman</b> (vacancy) <b>Bookings Sec.</b> (vacancy)  <b>Committee:</b> Nick Moriarty, Tricia Fuller, Will Hitchcock, Frank Warren <u>Meetings:</u> first Monday every month (except Bank Holidays: second Monday) 7.45pm Village Hall Committee Room
<b>CHURCH</b> <a href="http://naylandchurches.wordpress.com">naylandchurches.wordpress.com</a> <b>Priest in charge</b> (five ecclesiastical parishes) Revd Mark Woodrow 262150 revdmarkwoodrow@gmail.com The Vicarage, Bear Street CO6 4LA <b>Benefice Administrator:</b> Nicola Thorogood 262453 nicola.church@yahoo.com <b>Clergy:</b> Revd Valri Armstrong 262814 <b>Licensed Reader:</b> David Rowe <b>Reader Emeritus:</b> Ken Willingale 262531 <b>Lay Elders</b> David Pryor 262303 & Kathy Hunt 262014 <b>Bell Ringers</b> Captain: Chris Hunt 262014	<b>Organists:</b> St James: James Finch St Mary's: Catherine Johns <b>St James Choir:</b> James Finch 262993 <b>Church Wardens</b> St James: James Carver 262970 carversnayland@talktalk.net or Kathy Hunt 262014 St Mary's: Nicola Thorogood 262453 thorogood.nicola@gmail.com or Gerald Knox 262224 <b>Deanery Synod Reps</b> St James: James Carver 262970 Helen Schalin St Mary's: Rosemary Knox 262224, John Branfield 845107	<b>Parochial Church Council</b> <u>St James</u> Lay Chairman: John Baker, Treasurer: James Carver 262970, Sec: Michael George 07557 998325 25 Laburnum Way CO6 4LG 68michaelgeorge@gmail.com Com: Chris Hunt & Kathy Hunt, David Pryor & Sandra Pryor, Alex Murrison, Anita George, Helen & Gustaf Schalin <u>St Mary's</u> Treasurer: Gerald Knox 262224, Secretary: John Branfield 845107 George & Fiona Storey, Suki Cohen, Derek Johns, Tibby Mimpriss

## COMMUNITY WEBSITE - [www.naylandandwiston.net](http://www.naylandandwiston.net)

Webmaster: Graham W Griffiths – Tel: 262132 - e-mail: [webmaster@naylandandwiston.net](mailto:webmaster@naylandandwiston.net)

# VILLAGE DIARY

<b>September</b> 29th	Luncheon Club for over 60s: Church Hall <i>page 9 &amp; 26</i>
<b>December</b> 1st-3rd 3rd 4th 5th 7th 8th 9th 11th 11th 12th 13th 14th 18th 18th 19th 21st 31st	<p>Village Players: Pantomime 'Cinderella' [1st 6.30pm, 2nd 7.30pm, 3rd 2.30pm &amp; 7.30pm] <i>page 13 &amp; 27</i></p> <p>Community Council: <b>Christmas Family Fayre</b> 10.30am-1pm Village Hall <i>page 6 &amp; 7</i></p> <p>Friends of Wiston Church: Marenzio Singers 6pm St Mary's Church</p> <p>Village Hall Management Committee meeting 7.45pm Village Hall <i>page 30 &amp; 47</i></p> <p>Village Players: Auditions 'The Deep Blue Sea' 7.30pm Church Hall <i>page 13 &amp; 27</i></p> <p>Over 60s: members Christmas Tea 2.30pm Parkers Way Community Centre <i>page 26</i></p> <p>Nayland School: Christmas Fayre 6pm-8pm <i>page 14 &amp; 29</i></p> <p>Community Council: erecting the village Christmas tree High Street 9am <i>page 7</i></p> <p>Village Players: Auditions 'The Deep Blue Sea' 5pm Church Hall <i>page 13 &amp; 27</i></p> <p>Royal British Legion: Christmas Party 7.30pm Church Hall <i>page 22</i></p> <p>Luncheon Club for over 60s: Christmas Party Longwood Barn <i>page 9 &amp; 26</i></p> <p>Parish Council Meeting 7.30pm Village Hall Committee Room <i>page 47</i></p> <p>Country Music Club: Christmas Party 'Bonnie Diamond &amp; Co' 7pm for 7.30 Village Hall <i>page 13</i></p> <p>Candlelit Carol Service at St James Church at 6.30pm <i>page 14 &amp; 27</i></p> <p>Women's Institute: <i>Tales from a Rural Police Sergeant</i> Peter Layzell 7.30pm Village Hall <i>page 24</i></p> <p>Carols Around the Christmas Tree with the Boxted Silver Band at 7.30pm <i>page 14</i></p> <p>New Years Eve Party Night: Brian Mann &amp; 60s Music 8 till late Village Hall <i>page 13</i></p>
<b>January</b> 2nd 4th 9th 9th 11th 16th 16th 22nd 24th	<p>Community Council: taking down the village Christmas tree High Street 9am <i>page 7</i></p> <p>Art Group: New term begins 2pm Church Hall <i>page 23</i></p> <p>Village Hall Management Committee meeting 8pm Village Hall <i>page 30 &amp; 47</i></p> <p>Community Council: meeting 8pm Church Hall (Exec 7.30) <i>page 6 &amp; 47</i></p> <p>Parish Council Meeting 7.30pm Village Hall Committee Room <i>page 47</i></p> <p>Women's Institute: <i>Properties in Nayland</i> Wendy Sparrow 7.30pm Village Hall <i>page 24</i></p> <p>Royal British Legion: meeting 7.30 for 8pm Church Hall <i>page 22</i></p> <p>Country Music Club: 'Bob Keeley' 7pm for 7.30 Village Hall <i>page 13</i></p> <p>Luncheon Club for over 60s: Church Hall <i>page 9 &amp; 26</i></p>
<b>February</b> 6th 9th 11th 19th 20th 28th	<p>Village Hall Management Committee meeting 8pm Village Hall <i>page 30 &amp; 47</i></p> <p>Over 60s: meeting 2.30pm Parkers Way Community Centre <i>page 26</i></p> <p>Village Lunch: 'Supper with Strings' 7pm for 7.30 Village Hall <i>page 15 &amp; 25</i></p> <p>Country Music Club: 'Country Mile' 7pm for 7.30 Village Hall <i>page 13</i></p> <p>Women's Institute: <i>South Africa</i> James Carver 7.30pm Village Hall <i>page 24</i></p> <p>Luncheon Club for over 60s: Church Hall <i>page 9 &amp; 26</i></p>
<b>March</b> 6th 13th 21st 23rd-25th 25th	<p>Community Council &amp; Village Hall Management Committee AGMs Village Hall <i>page 47</i></p> <p>Conservation Society: AGM Francis Terry 7.15 for 7.30pm Village Hall <i>page 24</i></p> <p>HortSoc: Barry Kaufmann Wright 'Wildlife in the Garden' 7.30pm for 7.45pm Church Hall <i>page 23</i></p> <p>Village Players: Performances 'The Deep Blue Sea'</p> <p>HortSoc: Spring Show - display &amp; refreshments from 10am Church Hall <i>page 23 &amp; 37</i></p>
<b>Forward Planner</b>	<p>1st May                      Nayland Calendar Photographic Competition <i>page 31</i></p> <p>29th May                  Nayland Church Fete</p> <p>11th June                  Conservation Society: Open Gardens <i>page 24</i></p>

Thank you for your contributions – if you have any ideas or suggestions please contact the Editor

**DEADLINE** (subject to space) for receipt of copy in the **FEBRUARY** issue is 3pm on: **20th JANUARY**

CONTACT		ADVERTISING COSTS		
<p>The Editor: Lorraine Brooks Tel: 262807 E-mail: <a href="mailto:naylandcc@yahoo.co.uk">naylandcc@yahoo.co.uk</a> <b><a href="http://www.naylandcommunitycouncil.org.uk">www.naylandcommunitycouncil.org.uk</a></b> Copy can be posted in the Community Times Box in Nayland Post Office</p> <p>To ensure contributions can be accommodated in the space available it is advisable that space for promotion or large articles is reserved with the editor.</p>		Six issues for the Price of Five – get one advert <b>FREE</b>		
		Size	Dimensions	Cost
		1/16 page portrait	6.3cm H x 4.4cm W	£5
		1/8 page landscape	6.3cm H x 9cm W	£10
		1/4 page portrait	13cm H x 9cm W	£17.50
		1/4 page landscape	6.2cm H x 18.4cm W	£17.50

All monies raised from the Community Times go to good causes within the community. The Editor and Community Council may not be held responsible for the accuracy of articles or any other claims made by any advertiser in the Community Times.

The Editor and Community Council reserves the right to alter, shorten or refuse any items submitted for publication.

The Community Times is produced and distributed by the **Nayland-with-Wissington Community Council**

Registered Charity No.304926

The Community Times can also be viewed / downloaded from: **[www.naylandcommunitycouncil.org.uk](http://www.naylandcommunitycouncil.org.uk)**