



# NAYLAND<sup>WITH</sup>WISSINGTON COMMUNITY TIMES

YOUR LOCAL MAGAZINE FOR NEWS AND VIEWS



*The atmospheric buzz of the Nayland Street Fayre - see more on centre pages*

May I congratulate those who organised the Nayland Street Fayre. It followed in the great tradition of the Nayland with Wissington Community Council who have celebrated various national and local events over its 50 year history. It was great to see so many children who are our future as we go forward in the 21st century.

My thanks also to all the stall holders who made the day so memorable.

**Ken Willingale, President, Community Council**



## SAVE OUR NAYLAND POST OFFICE

The various options were discussed at the public meeting on 20th July, including forming a Community Benefit Society and raising funds by issuing share capital. There appeared to be genuine support and enthusiasm so villagers are urged to complete the questionnaires on page 6 and at <http://www.naylandcommunitycouncil.org.uk/POLatestNews.html>. In order to take this project forward a small number of willing people to give specific skills and time to the formation and running of the company will be required.

Further details of the meeting can be found on page 7.

## A PLEA FOR HELP

**The Village Hall Management Committee would very much appreciate some new members joining us.**

The time commitment is not very great but as the adage says "many hands make light work". We meet once a month in the meeting room of the hall for a couple of hours on the first Monday of the month. Our next meeting is on September 5<sup>th</sup> at 7.45p.m. In addition you may be asked to help out at the cinema nights or to show a hirer around the hall. If you feel you can give a little of your time to keep this community facility prospering for the mutual benefit of the whole village, please contact any member of the VPMC.

**AUGUST 2016**

**No: 162**

## SPECIAL INTEREST

The Village Quiz

Nayland Flower Show

Nayland Cinema: *A Bigger Splash*  
& *A Walk in the Woods*

Village Lunch

HortSoc Outing: *Wrest Park*

Wiston Tennis Tournament

Harvest Supper

*Court Knoll* Talk

*Chelsea & Hampton Court* Talk

Woodland Corner Cake Sale

## THIS ISSUE

Nayland Open Gardens

St James' Church Fete

Nayland Street Fayre

School: Fete & Concert

## REGULARS

Community Council News

Parish Council Notes

Village Hall Meetings

Society News

Church Services

Garden Notes

Village History

## PLUS

Dates for your Diary

Local Information

Contact Details

*(on back pages)*

View the CT in colour on: [www.naylandandwiston.net](http://www.naylandandwiston.net) or [www.naylandcommunitycouncil.org.uk](http://www.naylandcommunitycouncil.org.uk)

# NAYLAND WITH WISSINGTON PARISH COUNCIL

## Meeting: 8th June 2016

(This is an extract from the draft minutes of the meeting)

### DISTRICT COUNCILLOR'S REPORT

Various meetings were being arranged in the vicinity on the subject of building a sustainable future. The meeting in Nayland was scheduled for 5th July. In relation to Devolution, a separate deal was being arranged for Cambridge, so we were working with Norfolk. An appointment of a Deputy Chief Executive at the District Councils had been made for the interim period due to the resignation of the Chief Executive. Lindsay Barker was taking on this role.

### PLANNING

#### Decisions from the Babergh:

- **Little Firmins, Cawley Road B/14/01590/ROC** - The Planning Inspectorate, on appeal, confirmed a condition regarding occupation of the dwelling by those involved in agriculture locally would still apply, however, the wording was amended slightly to comply with up to date legislation.
- **5 Jane Walker Park B/16/00269** - Listed Building Consent had been granted to install double glazed units into existing wooden frames.
- **The Manse, 27 Bear Street B/16/00316/FHA & 317/LBC** - Permission and Listed Building Consent had been granted for an ancillary outbuilding and boiler room.
- **Pound House, Bures Road B/16/00456/LBC** - Listed Building Consent had been granted for internal alterations and French doors.
- **Westwood, Harpers Hill B/16/00288** - Revised plans for information only had been provided in respect of the application for replacement two storey dwelling and cartlodge.

#### Recent Applications: [yet to be decided by Babergh]

- **Horkesley Park Glasshouses** Application – The Chairman confirmed that a response from this Council was agreed and sent following the guidance agreed at last meeting.
- **17 Birch Street B/16/00519** - This application was for replacement windows and plastering. The Parish Council had No Objections.
- **Vine House, 1 Court Street B/16/00466** - This application was for a two storey double garage with bedroom accommodation above. The Parish Council had No Objections.
- **Oak Cottage, Kingsland Lane** - There were No Objections to this tree application.
- **Ricklands Cottage, Cawley Road B/16/00604** - This application was for a cartlodge and alterations to existing driveway. The Parish Council had No Objections. Both G Battye and G Walker abstained.
- **Park House, Wissington Uplands B/16/00723** - This tree application was to reduce 4 lime trees and 7 holm oak trees. The previous application was for a 50% reduction of the lime trees. This Council felt that was too drastic, however, had No Objection to this amended application. There was also No Objection to the reduction of the holm oaks as they are dense and very close together. Careful professional maintenance work, as carried out in previous years, seems sensible and is unlikely to have a detrimental impact of the character and appearance of the local area.

### ALLOTMENTS

The Clerk shared information from the Allotment waiting list and confirmed there may be potential for either 1 or 2 extra full allotments. The recent vandalism has been reported to the Police. A resident had written to the Parish Council to register a claim for right of access on the allotment field. Our footpath warden had researched the next step. It was agreed to advise that claims for prescriptive rights of access should be directed to the County Council. Contact details and a web link were provided and a pending claim does not prevent us from creating a permissive path. The name and management of the field was then discussed following feedback at the Annual Parish Assembly. It was agreed to continue with this project and apply for funding.

### RECREATION AND OPEN SPACES

The order had been made for the work in the playground, the investigation and the decision to place the order had been delegated to I Harris and G Battye between meetings. The Field Analysis report of the Parish Council trees had been received. It was agreed to combine the recommendations with the work at the Allotment Field. It was agreed for members to consider a gardener to maintain the Horse Watering.

### STREET LIGHTING

A site meeting is still to be arranged with the owners of 1 Court Street in relation to upgrading the light on their property. The Chairman, G Battye and I Harris agreed to liaise over attendance as soon as the owner confirms their availability. It was agreed to chase the work to the shop near Forget Me Not.

### HIGHWAYS

Following the Annual Parish Assembly, Star Alley had been strimmed and weed-killed. Fly tipping in Wiston had not been cleared. Various pot-holes had been reported between meetings. There was a broken inspection chamber cover in Bear Street. The Council has been in dialog with the County Council in respect of the leaning tree in Fen Street across the Mill Stream.

It was agreed for members to consider the Quiet Lanes scheme between meetings and include as an Agenda item for next meeting. *[This is aimed to help walkers/cyclists by encouraging motorists to respect the quiet status of a lane. There are not many schemes in Suffolk yet.]*

Following discussion it was agreed for Martyn Booth to take the lead on the cycle rack project and as soon as this Council has a clear idea of what is required, County Highways will be consulted.

G Battye attended the Police Forum and shared his observations with the Council. The various options to combat speeding were out-lined.

### VILLAGE HALL

Mrs Fuller reported that the sign pointing towards the Village Hall was on order following discussions with P Gant at County Highways. It was noted that the remains of the bonfire site still hadn't been cleared effectively by the Community Council.

### ANNUAL PARISH ASSEMBLY

From the Annual Parish Assembly there was general concern at the lack of police attendance especially in view of the spate of crimes. Letters received from residents following the Annual Parish Assembly had been circulated and the contents noted.

### IN BRIEF

It was agreed to defer the election of a vice chairman to the July Meeting.

A head stone in the burial ground had been laid flat as it was insecure, the wreaths by the lych gate are in need of removal; it was agreed to ask our grounds maintenance contractors.

**JMAC INTERIORS**  
*Specialist Painters & Decorators*  
 Est. 1997



- All Interior and Exterior Work Undertaken
- Specialist in Period & Listed Properties
- Wallpaper Hanging to the Highest Standards
- Restoration of Ornate Cornices & Ceiling Roses
- References Available
- Fully Insured

Contact: Jeff Macdonald  
 Tel: 07778 031505 - 01787 224674  
 Email: [jmacinteriors@aol.com](mailto:jmacinteriors@aol.com)  
[www.jmac-interiors.co.uk](http://www.jmac-interiors.co.uk)






# NAYLAND WITH WISSINGTON PARISH COUNCIL

Meeting: 13th July 2016

## It has not been possible to include a report on this meeting Could YOU help to ensure Parish Council reports are included?

In order for independent reports to continue a volunteer is needed to share this task by attending a meeting every other month and writing the report. The Parish Clerk is able to answer queries you may have on issues discussed. The meetings are held on the second Wednesday of each month at 7.30pm in the Village Hall Committee Room.

If you can help or would like more information please contact Lorraine Brooks on  
lorraine.nayland@btinternet.com or 262807



### ROYAL BRITISH LEGION Women's Section

Secretary: Kath Hunt 262014

#### CLOSURE OF THE BRANCH

In 1945 a branch of the Women's Section of the British Legion, (now Royal British Legion, RBL) was formed in Nayland. Membership was open to ex-Service women, wives, mothers, widows, sisters, daughters and dependents of past and present members of HM Forces. Over the years several hundred ladies have been members of the Branch, including many who lived and worked at the Jane Walker Hospital - this was formerly a British Legion Hospital and the inaugural meeting of the Branch was held there. The Women's Section has been to the fore with fund raising for the Legion and for many years its members formed the backbone of the annual door to door poppy collection. The Women's Section Standard has been paraded at the Remembrance Day Services locally, as well as at county and national Women's Section conferences.

But now time and circumstances have resulted in change to the organisation of the Women's Section including the way it is run. As a result of this the members of the Nayland and District Branch have decided to close the Branch at the end of June 2016. The decision was taken with regret and we thank all members, past and present for their support over the years.

The work of the RBL does of course continue. The local Branch is open to all (men and women), and now is not solely for ex-Service personnel. The RBL looks forward to your continuing support.

*Photo: Kathy Hunt, Standard bearer at the 2012 Remembrance Service - their presence will be missed.*



## Nayland Over 60s LUNCHEON CLUB

A Monthly Lunch for Senior Citizens  
Church Hall ~ 12.00 noon for 12.30 pm ~ £3

*(No lunch in August)*

**Tuesday 27 September**  
**Tuesday 25 October**

Come along and join the friendly atmosphere for a chat with friends, old and new.

If you would like to join us for lunch just come along. If transport down to the Church Hall is difficult telephone Olga Alexander on 263923 to see if we can collect you.

## NAYLAND FUN VILLAGE QUIZ

Preparations are in hand for this year's Village Quiz to be held on **Friday 7th October** in the Village Hall - see page 15 for further details and a booking form.

## VILLAGE QUIZ RAFFLE

This year first prize at the raffle will be £50 so don't miss the opportunity to have a flutter..... tickets will be on sale in advance of the quiz at

**Farmers Market on 10th September.**

Nayland with Wissington calendars will also be on sale so do pop along to see us in the Village Hall Foyer.

## Office Matters

Comprehensive  
**WORDPROCESSING**  
Service

(Inhouse cover also provided)

Please contact

**Margarette**  
on

**01473 822860** or

**07863 560945**

to discuss your particular  
requirement

[margarette@officematters.org](mailto:margarette@officematters.org)

**Professional and Confidential**

## INDOOR TENNIS COURT

at Newtons Farm,  
Wissington, Nr Nayland

"PAY AND PLAY"

NO MEMBERSHIP FEE  
PARKING & TOILET FACILITIES

Further

details:

**01206**

**262453**

[www.indoortenniscourt.co.uk](http://www.indoortenniscourt.co.uk)



## Learn to drive

with your local driving school



**Rob Austin D.O.T.A.D.I.**

Fully qualified

12 years experience

Dual controlled car

Learn at your own pace

1st 2 hour lesson £25

£19 per hour there after

For more information or to book  
lessons call Rob on:

**01206 262106**

or: **07946 085338**

## TOWN PRINTS

**General  
Picture Framing**

Also a selection of  
antique engravings  
of Colchester and District.

Foster Jones  
Longwood Cottage,  
Fen Street, Nayland,  
CO6 4HT

**Tel: 01206 262483**

## DS Clarke Building Services

For professional - high quality work

General building work including:-

Extensions - Renovations - Brickwork

Landscaping - Roofing- Kitchens - Tiling

Plastering - Carpentry - Decorating etc

For a free, no obligation estimate,  
contact David Clarke on:

**Tel: 01787 227943**

**Mb: 07867 851 137**

[dsclarkebuilding@yahoo.co.uk](mailto:dsclarkebuilding@yahoo.co.uk)

7 Claypits Ave, Bures, CO8 5DA

## Lower Dairy Farm

**Traditionally Reared  
BEEF**

Free Range Pork

Wild Venison

Preserves & Chutneys



Lower Dairy Farm Shop

Water Lane, Little Horkesley

CO6 4JS Tel: 01206 262314

[www.lowerdairyfarm.co.uk](http://www.lowerdairyfarm.co.uk)

## Fix-A-Lock

Locksmith - available 24/7

- Emergency LOCKSMITH -
- Wooden and UPVC doors
- All window & door repairs -
- handles/hinges/mechanisms/etc
- Replacement sealed units
- UPVC window & door specialist
- UPVC window & door installations
- CRB checked



**Ted Blanchette**

**07836 551 032**

[tedblanchette@tiscali.co.uk](mailto:tedblanchette@tiscali.co.uk)

## Stour Valley Landscapes

*Gardening*

*Fencing*

*Landscaping*

*Tree & Hedge work*

*Handyman jobs*

*For a local, friendly &  
reliable service:*

**Tel: 01206 263629**

**Mob: 07801 430751**

## TRG PEST CONTROL

Rabbits, Moles, Rats,  
Mice, Wasps, etc  
Efficient and  
Economical Service

For Further  
information call

**Terry Gowing**

**Tel: 01206 322776**

**Mobile: 07990 954192**

Colchester's Premier Roofing Specialist

Established  
over 20  
years

## EXTERIOR CARE

FLAT ROOFING - TILING & SLATING  
New Roofs & Repairs - Chimney Work  
- Leadwork

An Established Local Family Business  
QUALITY WORKMANSHIP GUARANTEED  
FREE ESTIMATES & ADVICE

For Quality, Reliability & Service Please Call

**01206 272453**

MOBILE 07970 016234

5 Brook Cottages, Boxted, Colchester CO4 5TW

## Karen Bromley Swim School

BABIES  
TODDLERS  
TEENS  
ADULTS  
SMALL GROUPS  
POOLS IN YOUR AREA  
FULLY QUALIFIED TEACHER  
STA & ASA



TAKING BOOKINGS NOW

**07841 483515**

[kbswimschool@yahoo.co.uk](mailto:kbswimschool@yahoo.co.uk)

[KbSwimSchool.com](http://KbSwimSchool.com)

## HANDYMAN

based in Nayland

**Gardening  
Decorating  
DIY**

**Odd Jobs**

References available

**Call Stuart Mosley**

**07760-236937**

**01206-262981**

## COMPUTER CARE V-EXTERMINATOR LTD

**CALL NOW: 01787 370397**

➤ Free Call Out Service

➤ Virus Removal and Internet Security

➤ Home and Home Office Support

➤ Networks / Wireless / Printing

➤ Microsoft Windows 7/8/10

➤ Very Reasonable Rates

[www.v-exterminator.co.uk](http://www.v-exterminator.co.uk)

23 Brandeston Close  
Great Waldingfield  
Sudbury

**Microsoft  
CERTIFIED  
IT Professional**

## Evolve LANDSCAPES

Landscape design & build

- Landscape Design
- Construction work
- Paving / driveways / patios / paths
- Fencing / decking / garden walls
- Pruning / hedge cutting
- Tree felling / clearance
- Regular garden maintenance



T 01206 263813 M 07841 625358

E [info@evolve-landscapes.co.uk](mailto:info@evolve-landscapes.co.uk)

[www.evolve-landscapes.co.uk](http://www.evolve-landscapes.co.uk)



## JP Services

Fencing - Horticultural Woodwork - Paving

07970 559251 [www.jpsservices.co](http://www.jpsservices.co)

- Fencing, Rustic Structures - Rose arches, Pergolas etc
- Sheds & greenhouses erected and repaired - bases laid
- Raised Beds, Traditional Window Boxes & Planters
- Hedge laying
- Patios and Paving
- Artificial grass installed
- Grass cutting
- Gardens cleared, Waste removed - EA registered waste carrier
- NPTC chainsaw certification held
- Oak tubs/barrels and steel drums supplied
- And much more

Also, Flat pack Furniture constructed

## COMPUTER DOCTOR

**CALL OUT**

THE TIME THAT SUITS YOU!

COMPUTER MAINTENANCE & UPGRADES

- PC Maintenance
- Device Installation
- Software Installation
- Upgrading Operating Systems
- Improve Performance
- Internet & Mail Configuration
- Virus Detection and Removal



Contact: 07989 405791 (Nayland based)

## Country Cars Private Hire

Personal & Professional Service Polstead Based

Local & Long  
Distance

Airports - Theatres  
Weddings - Hospitals



Contact Dave Howard

01206 262196 07767 076976

## Mike Freeman's Window Cleaning

Residential and Commercial



For an honest, fully insured, experienced window cleaning service, please call  
**Mike: 01206 503814**  
or **07590 396781**

Facias, Gutters, Frames, Cladding - all undertaken

13 Flanders Field, Colchester CO2 8BX

## DAWN DALE

BEAUTY & RELAXATION THERAPY

AUSSER HOUSE • POLSTEAD STREET • STOKE BY NAYLAND

OFFERING: MANICURE INC GELCOLOR BY OPI,  
PEDICURE, WAXING, AROMATHERAPY,  
BODY TREATMENTS, FACIALS,  
EYE TREATMENTS, MASSAGE  
LADIES ONLY

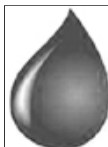
OPEN: TUESDAY-SATURDAY 9AM-5.30PM

GIFT VOUCHERS AVAILABLE

PLEASE PHONE DAWN:

**01206 262 118**

[dawncdale@gmail.com](mailto:dawncdale@gmail.com)



## STOURVALLEY

HEATING & DOMESTIC SERVICES LTD

- OIL CENTRALHEATING INSTALLATION & MAINTENANCE
- COMMISSIONING
- HOT WATER STORAGE INSTALLATION
- UNDERFLOOR HEATING INSTALLATION
- WATER SOFTENER INSTALLATION
- FULL BATHROOM DESIGN & INSTALLATION
- DOMESTIC PLUMBING SERVICES

Local experienced established registered installer  
For advice or a free estimate call MARK WARREN  
on Mobile 07968 586613



## SHORT COURSES at ASSINGTON MILL

Beekeeping for beginners  
Jam, jellies & juice making  
Birds of Prey, working with  
Hen keeping in your garden  
Chain-sawing for amateurs  
Clay ovens - how to make one  
Bricklaying for amateurs  
Plumbing basics for amateurs  
Ballroom dancing for novices  
Wooden spoon carving  
Sheep for Smallholders

Bread-making  
Foraging for food  
Wild game butchery  
Dog psychology  
Tortoise ownership  
Natural Skin Care  
Fruit tree pruning  
Stained glass  
Silver clay jewellery  
Willow plant supports  
Cyder-making

Fly Fishing  
Scything  
Mosaic  
Badgers  
Upholstery  
Storytelling  
Hedgelaying  
Felt-making  
Signwriting  
Pig-keeping  
Calligraphy

Contact Anne Holden: 01787 229955

[info@assingtonmill.com](mailto:info@assingtonmill.com)

[www.assingtonmill.com](http://www.assingtonmill.com)

## MAKING YOUR WILL

Retired solicitor Trevor Dodwell is local and  
Through his business he writes  
Wills and Lasting Powers of Attorney.  
He offers a home visit service, thoughtful and friendly  
client care, with career-long advisory experience.  
The fees are surprisingly affordable.

Please call 01206 263420

or email me at: [trevordodwell@aol.com](mailto:trevordodwell@aol.com)

[www.thewillbusiness.com](http://www.thewillbusiness.com)



Your feed back would be much appreciated by the Save Our Post Office Campaign committee

## NAYLAND POST OFFICE - COMMUNITY QUESTIONNAIRE

How often do you use the Post Office?	Daily	2-3 times a week	Weekly	Fortnightly	Occasionally	Never
What services are you most likely to use?	Parcels/Letters/ Stamps	Home shopping returns	DVLA/Bill payments/ Pensions	Banking services	Other ( <i>please state</i> )	
What are you most likely to buy?	Newspapers/ magazines	Stationery/Stamps	Emma Bridgewater /Gifts	Cards	Other ( <i>please state</i> )	
Other products/services you would like to see	Fresh flowers	Local produce (different from that available elsewhere in the village)	Veg box scheme	Fresh coffee	Other ( <i>please state</i> )	
Rate the importance of the Post Office to you	Extremely	Very	Quite	Not very	Unimportant	
Would you be able to help set up a Community-based Company (please give area of expertise)	Yes / No	Details:				
Would you be able to give up to 2 hours a week to the running of the shop?	As volunteer helper Yes / No		As volunteer manager Yes / No			

Name:	Address:	Telephone:	Email:
-------	----------	------------	--------

Please return completed form to [ryanfamily@btinternet.com](mailto:ryanfamily@btinternet.com), Maggie Ryan at The Butts, 20 Church Lane, Nayland CO6 4JH or to the Community Times box in Nayland Post Office by 15th August 2016



<http://www.naylandcommunitycouncil.org.uk/PostOffice.html>



## COULD YOUR SKILLS HELP SAFEGUARD THE FUTURE OF NAYLAND POST OFFICE?

If you have the experience or desire to help the SOPO campaign, whether at a later date to assist on the retail side, or more urgently to assist with the formation and running of the company please get in touch with

**Maggie Ryan 262837 [ryanfamily@btinternet.com](mailto:ryanfamily@btinternet.com)**

who can answer any questions you may have.

### Public Meeting held on 20th July 2016

Roy Chapman welcomed about 45 attendees and presented an introduction of the Save Our Post Office Campaign.

#### MIKE HUNTER'S REPORT TO THE MEETING

As you have already heard Roy mention, provided sufficient interest is shown by the community following tonight's meeting, we are hoping to commence negotiations with Patsy concerning the terms to acquire the post office business and an appropriate interest in the property. In anticipation of reaching an accord we have been investigating the type of corporate entity most suitable to acquire the business and subsequently trading from the premises. Fortunately in 2014 a new type of limited liability company was created known as a Community Benefit Society. Like a limited company it enjoys limited liability, it issues shares and can trade but the essential difference is that it has to be run for the benefit of the community and the rules of the Society shall contain an asset lock whereby if the society is dissolved, any residual assets must be transferred to another charity with the same or similar charitable purposes. Furthermore each member will have one vote no matter how many shares are owned and of course members have no liability to third parties.

In the event that we are able to progress the acquisition of the Post Office then a prospectus will be issued inviting community members to subscribe for shares. As you would expect the prospectus will contain details of the financial projections and any other terms relevant to making a decision whether you might want to subscribe.

Note that any shares issued by the Society are not transferable, save in the case of the death of a shareholder, and the ability to withdraw will in all probability be in the discretion of the board. We are also investigating the possibility of the project falling within the Governments Enterprise Investment Scheme to permit tax relief to be claimed.

#### Director liability:

The issue of director liability is very similar to an ordinary limited company – we will not expect any director to give any personal guarantees for the performance of the company and accordingly personal liability would only arise in the case of negligent or fraudulent behaviour or if a director exceeded his or her authority. We shall also investigate the possibility of indemnity insurance for directors in any event.

#### MAGGIE RYAN'S REPORT ON FINANCES

Mike has mentioned that we would raise funds by issuing share capital. In addition to this I anticipate we would supplement start-up capital requirements with some fundraising to attract donations. This will all be done with complete transparency: a business plan and share prospectus would be drawn up and would be made publicly available. Meanwhile, I can tell you that from all the information and accounts received (going

back as far as 2009) the community could run the Post Office as a healthy business on – at least – a breakeven basis, possibly even returning a profit.

We would adopt the Post Office 'Local' business model, retaining the premises, sorting office and currently employed staff: we are grateful to Sylvia Bond for agreeing to stay on the Post Office counter. In addition we would look to back up Sylvia's efforts with a number of volunteer helpers offering to give one or two hours during the week - and I am glad to say that there has already been a very positive response from the questionnaires. In case you haven't seen the survey, I have a limited number of copies here, or perhaps could I encourage you to complete the form online? It is available from the PO or the Nayland Community Council website: just follow the Post Office links.

But I would at this point reiterate that this project will simply not get off the ground without a small number of people willing to give specific skills and time to the formation and running of the company. Without them, the PO will not award us the franchise – we need to demonstrate we have the backing of the community and a strong team. We have set a deadline of 30<sup>th</sup> of September to recruit the right people. The governance team would include: Chairman, Company Secretary, Treasurer, Minutes Secretary, Retail Business Manager, Post Office Counter Manager, Members Secretary, IT Manager, Publicity/Marketing Manager

So if you have the flair, experience or desire to roll up your sleeves and make a lasting difference by joining the team please do find me after the meeting and I would love to have that conversation. Or send me an email when you've had some time to reflect.

If we are successful in forming the CBS I will just quickly outline our initial main priorities which will all run in parallel:

- To negotiate terms with Patsie Ford
- To prepare a business plan and tender for the PO franchise
- To set up the company and appoint solicitors and accountants
- To raise start-up and working capital through donations and shares.

I might add that the success of well-supported community shops is well in excess of their commercial counterparts and we have every chance of making a real and lasting difference to the village by keeping our Post Office open.

Concluding on the meeting, Roy Chapman states the most important message which emerged from the meeting was that without volunteers the project would never get off the ground. Age is no barrier - there appeared to be genuine support and enthusiasm so villagers are urged to complete the questionnaires being circulated and return them to the Post Office well before 30th September.



## COMMUNITY COUNCIL REPORT

Meeting: 6th July 2016

Vice Chairman: Colin Ramsell 2634006

[www.naylandcommunitycouncil.org.uk](http://www.naylandcommunitycouncil.org.uk)

**Executive Committee:** Iain Wright confirmed he would no longer be representing the VPMC at CC meetings and wished to be an individual member. He said he would confirm whether Peter Mann would be taking his place. (Iain resigned as CC representative at the VPMC meetings in January.)

It was pointed out that this took individual membership to 50% of the Executive committee, which is the maximum stated in the Constitution. We, therefore, urgently require more members from village groups.

The Community Council was originally made up of a representative from every village group, which provided wide representation of residents. This 'bringing together' also enabled good cohesion between the groups and benefited all.

### Fundraising Activities:

**Spring/Summer Event:** The annual fundraisers of the CC are held in October to December. Ideas for a Spring/Summer fundraiser are being sought. A Valentine's event or Barn Dance had previously been mooted. Please bring ideas to the next meeting for further discussion.

**Selling advance raffle tickets at Farmers' Market:** It was agreed selling raffle tickets (and calendars) the Farmer's Markets ahead of the Quiz and Christmas Fayre had been beneficial. The Farmer's Market organiser has kindly agreed we may do so in the foyer of the hall. We will need a couple of volunteers for each market: 10 Sept. 8 Oct & 12th Nov. It was agreed to promote a first prize of £50. Please let Lorraine know if you can volunteer to help between 9.30am-1pm on one of these dates.

**Community Council History & Website:** Lorraine Brooks said the website [www.naylandcommunitycouncil.org.uk](http://www.naylandcommunitycouncil.org.uk) has details of Street Fayre competitions and programme of activities as well as the grant application form.

The CC's history is ready for display during the Street Fayre and be available for other CC events if required.

**Community Defibrillator:** This was a proposal for a community defibrillator sited at the Fire Station, which had been given approval by the Fire Service.

Iain Wright said we missed the grant opportunity so this project is on hold. There are currently no grants available from the British Heart Foundation but hopefully grants will come available again.

**Save Our Post Office Campaign:** Maggie Ryan reported on the current situation.

The flyer and promotion to raise awareness of the services offered at the post Office has had some success as transactions have risen slightly during May, and we would urge the village to keep supporting the PO. The CT will repeat the promotion.

The SOPO working group are engaging with a charitable foundation that offers advice and support to communities wishing to save a community asset, such as a Post Office, and we have identified a suitable business model for running the PO after the Postmistress's retirement in October 2019.

**Donation of wooden '50' Sign:** We are grateful for this donation from Iris Sebba for our 50th year celebration Street Fayre.

### GRANTS & DONATIONS

**Village Hall Endowment Fund:** The VPMC asked for £1,000 towards this fund. At the May meeting following a split vote the decision was deferred rather than the chairman using a casting vote. At that meeting there had been concerns:

- that a grant of £3,500 has already been awarded to the VH this year
- that there had been inaccurate comments at recent VPMC and PC meetings regarding authorisation of expenditure from the Endowment Fund
- that there had been confusing comments at CC meetings as to whether the grant awarded is always paid into the Endowment Fund

These queries have not been resolved. It was suggested that details can become blurred over time with changes in committees

and reference to archive documents is likely to settle this query. In this respect it was suggested that it would be useful if the VPMC minutes were available to view at [naylandandwiston.net](http://naylandandwiston.net) as the CC and PC minutes are - as a current and archive repository.

It was agreed to write formally to the VPMC treasurer stating that: *"prior to consideration of further grants to the Endowment Fund the CC requests official written confirmation, to both the CC and PC, regarding their involvement in the Endowment Fund. It is hoped this confirmation will be in line with the resolution agreed by the VPMC at their meeting on 8th May 2007. The CC hope this would eliminate any future confusion between the committees involved."*

*Following comments during past CC meetings we would also ask for confirmation that grants awarded to the EF are always deposited in that account.*

*We hope this will rectify previous confusions, which may not have occurred if the VPMC minutes were available as a public record for easy reference. Graham Griffiths provides an excellent repository for PC and CC minutes and archives on [nayland-andwiston.net](http://nayland-andwiston.net); the inclusion of VPMC documents would be a useful addition.*

Following the grant decision some historical aspects of the Village Hall were discussed with Iain Wright, Chairman of the VPMC. Bryan Smith pointed out that the original lease for Webb's Meadow - which would be due for renewal in 13 years - was between the Community Council (the tenants) and the Parish Council (the freeholders). Records show the Community Council had purchased the land and gained planning consent for a village hall, but in order to qualify for certain grants the freehold of the land was passed to the Parish Council in 1969. The VPMC was set up in May 1970 to manage the recreational facilities on Webb's Meadow - the Trust property. Responsibility for management of the village hall building, which was built by the CC, was passed to the VPMC at its official opening on 5th August 1971. The Lease states that: *"the tenants (CC) are to remove at the expiry of the tenancy if the Council (PC) so requires any building erected during the tenancy"*. It was suggested that the thirteen years remaining on the tenancy is not long and it would be prudent to explore further the legalities and transactions during the 1999 upgrade of the village hall building including whether there was a lease extension.

**TREASURER'S REPORT:** Maggie Ryan gave her report.

The early part of the year holds no fundraising events so income is derived entirely from Community Times and Calendar contributions. The 2015 annual return to the Charities Commission has been filed. The CCLA Deposit Account requires a change of signatory - Iain Wright was asked to complete the mandate form.

Main income includes: Community Times £2232.50, Calendar £690, Donation £135. Main expenditure includes: Community Times £620, Calendar £25, Grants £3650 (Village Hall Kitchen £3,500, Mother & Toddler Group £150). We hold £444 for First Response, £270 for the Services Fund and the following grants; £150 for the Local History Exhibition, £500 for the Conservation Society Court Knoll and £825 not yet drawn for the Street Fayre. Therefore **unencumbered assets are £18,770.10.**

**Introduction of online banking:** The mandate has been signed and passed to NatWest for processing.

**CC Insurance:** Community Action Suffolk will no longer be providing insurance but wish to help groups find specialist cover and have recommended another route. Maggie will pursue this for annual public liability insurance.

**Community Times:** Lorraine Brooks gave the usual plea for contributions for the next issue. She would be grateful to receive photos of the Street Fayre - the more the merrier - for the CT and the CC's website and archives.

**Village Calendar:** A print proof was displayed at the meeting. Lorraine Brooks said calendars will be on sale at the Street





## HELP SAFEGUARD THE FUTURE OF NAYLAND POST OFFICE

DID YOU KNOW.... YOU CAN:

- **Tax your car, motorcycle, HGV or tractor or SORN your vehicle**
- **DVLA forms are available:** for vehicles and driving licences
- **Pay most of your utility bills;** electricity, gas, telephone, (there is a charge for water), council tax by arrangement
- **Collect your pension or benefits payments**
- **Withdraw money from most current accounts** (not business)
- **Pay cheques into current accounts:** Barclays, Lloyds, TSB, NatWest, RBS, Co-op, Smile, Cahoot, HSBC, First Direct, M&S Bank
- **Pay cash into current accounts:** Lloyds and NatWest via your normal deposit slip, or you can arrange for your bank to pay in cash at the Post Office and they add the facility to your bank card
- **Santander transactions:** business or personal cheque deposit and cash is available with prior arrangement with them
- **Foreign currency:** Euros available on demand, other currencies by order (before 4pm for next day)
- **Collection mail items:** for online shopping or for missed deliveries
- **Home shopping returns** via Royal Mail can be made
- **Purchase postal orders or One4all Gift Cards**
- **Buy your Environment Agency Fishing Rod Licence**
- **Arrange to have your mail redirected** if you are moving house or **Keepsafe™** if you are going on holiday
- **And of course, you can buy stamps, post letters and parcels,** whether first or second class, by air, or recorded/registered delivery. You can also get **advice** on the best way to send your mail and get free proof of postage certificates.

**So save your time, your fuel and beat the queues at banks.....**

## USE NAYLAND POST OFFICE - EVERY TRANSACTION HELPS

**PO Opening hours: Monday–Friday 9am-5pm, except Wednesday 9am-1pm, Saturday 9am-1pm**

Fayre and the Flower Show. She added help with sales would be appreciated at village events and suggestions for ways to increase sales would be welcomed.

### FORTHCOMING ACTIVITIES:

#### Street Fayre - Sunday 17th July 2016:

The Street Fayre is now all in place to be a great fun family event. There is a good selection of activities and stalls to keep everyone entertained. The Committee will have their final meeting on 13th July 7pm in the High street to finalise details. The event will be officially opened at 11am by Ken Willingale president of the CC, followed by junior choir singing.

We are very proud of our very exciting community art project - a large picture of Nayland created by Anna Boon which all the Community can take part in by adding their own finger print to this piece of history!

Stalls include: children's activities/face painting/shooting range/ children's roundabout/ Pimms stall/ vintage car ride/art exhibition/ history of CC exhibition/1960s quiz/ conservation society quiz/ baguette stall/ice cream/table tennis/Punch and Judy/walking balloons/jewellery stalls/antiques/card stall, etc. The Anchor and Blue Owl will also be open for business throughout the day.

The committee will be dressing the street with bunting from 6pm on Saturday evening and setting up from 8am on Sunday morning.

Claire Buller and the team were thanked their hard work.

**Fun Quiz - Friday 7th October:** Rachel Hitchcock will be leading the quiz, the CC organise the raffle.

**Bonfire & Fireworks - Saturday 5th November:** Iain Wright agreed to co-ordinate the event and he will contact Fred Bugg about clearing the debris from the bonfire. Lorraine has the task list for the event and will circulate.

It was agreed to order the same quantity of Fireworks as last

year from Dynamic Fireworks - this must be done in August to obtain the 20% discount. Quantities of sparklers & glo-necklaces left over should be confirmed with Claire Buller (usually 100 of each are required).

After last year's bad weather it was felt more promotion is needed to build visitors confidence. It was agreed that Lorraine would purchase a banner and obtain banner permission from the PC. **Christmas Fayre - Saturday 4th December :** A co-ordinator for the event is needed. Lorraine will check with Jayne Kennedy whether the School can perform this year.

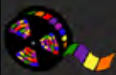
### SOCIETY REPORTS

**Art Group:** Colin Ramsell said they are mid way through the summer session. Next week they are off to Newton Green Golf Club for Cream Tea - this has become a popular annual occasion, although nothing to do with art! During the Street Fayre they will be staging an exhibit of their latest work in St James' Church and on 27th July a trip to Pin Mill is being organised.

Their exhibition held in May with over 70 pictures on display very successful with large numbers of visitors full of praise for the work on display.

**Conservation Society:** John Partridge said numbers attending Open Gardens were down due to the weather but they raised £1,500. In June their meeting was entitled 'Past Times: An Evening of Reflections of Old Nayland' compered by Chris Hunt. During the Street Fayre they will have a quiz, positioned under the archway of the old Queen's Head, which has been compiled by Wendy Sparrow and Andora Carver. They are planning a visit to Columbine Hall, near Stowmarket on 13th September.

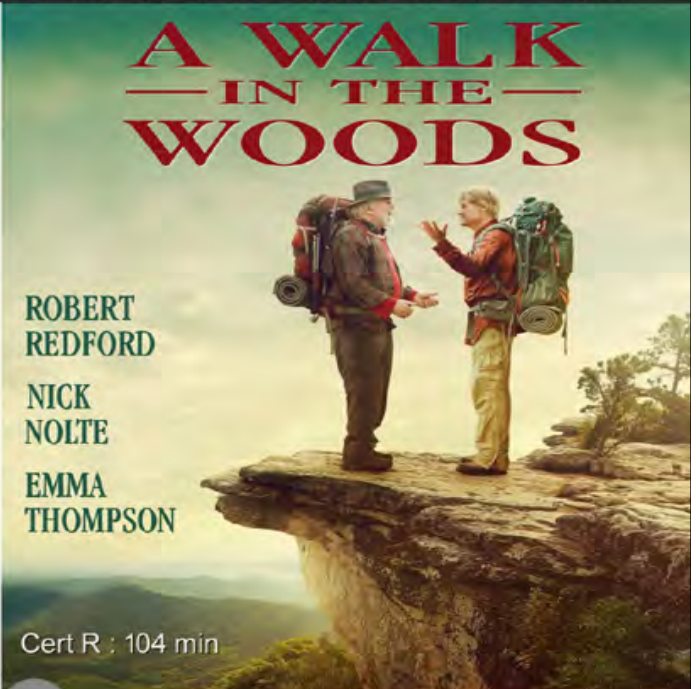
**Parish Council:** Martyn Booth said they are progressing with their project for the Allotment Field and they are still considering sites near the Harpers Estate/Bear Street junction for a small scale cycle rack.



# NAYLAND VILLAGE HALL CINEMA

Start 8pm Bar open at 7.30pm

Tickets £5 (inc tea/coffee and biscuits) Ice cream available available from the Post Office (afternoons) or on the door



Friday 26th August

Friday 30th September

It was pointed out that the proposals for the Allotment Field are a mystery to residents unless they attended the Parish Assembly. Some members felt villagers have enjoyed access to the area for decades and should be aware of proposed changes. It was suggested details, like those shown at the Parish Assembly, could be featured in the Community Times, but Lorraine said that no information relating to the Parish Assembly or the Allotment Field project has been made available.

**Royal British Legion:** Alex Murison said a central joint committee had been formed to implement integration proposals with the Women's' Section by 1st October and developments for branch participation are awaited.

Their visit to the Debach Airfield Museum was attended by 17 members and friends. Their next visit will be to Brightlingsea Museum and Shipyard on 14th September; contact Andrew Gowen on 262534 if interested. Arrangements are being made for a visit to Sizewell Power Station on 26th October.

Reminiscences of the 1916 Battle of the Somme were presented at their last meeting. At the next meeting, on 18th July, 7.30 for 8pm at the Anchor Inn, there will be an illustrated talk on the Landmark Trust.

**HortSoc:** Lorraine Brooks said they have been busy; their main fundraiser, the Morning Market in May was very successful. Feedback from the June outing to Hindringham Hall and Oxburgh Hall has been very positive.

They were looking forward to the summer Garden Party on 8th July and they will have a stall at the Street Fayre on 17th July. The hanging basket competition takes place in the lead up to the show which is on 6th August.

They are taking bookings for a coach outing to Wrest Park and Hopleys Plants Garden on 4th September.

**Village Players:** Auditions for their pantomime 'Cinderella' take place on 10th and 13th July.

**Women's Institute:** Wendy Sparrow said the June meeting had been a talk about East Anglian place names. In a follow up to an interesting talk last autumn they visited the Shelley Centre for Therapeutic Riding (RDA). They met the horses and some members rode Ebony, the computerised mechanical horse. The visit enabled us to fully appreciate what a valuable facility the centre is for those with disabilities who get so much from riding.

In July the WI will be selling baguettes at the street Fayre and

their monthly meeting will include a talk about St Nicholas Hospice Charity Shop. In August they have their annual Garden Party.

**Woodland Corner:** Tricia Hall said they are very busy at the moment and they have a good number of bookings for September. Caroline Keep has retired as administrator and Nicola Peachey will be replacing her. The recent sports day had been good with all children receiving a medal and they enjoyed the Barn Dance on 11th June which was a very successful fundraiser.

**Book Club:** Wendy Sparrow said they have read a variety of books; their last book was *Firefight* by Chris Ryan, the current book is *Whistling for the Elephants* by Sandi Toksvig which they will discuss at their next meeting.

**Table Tennis Group:** They will be participating at the Street Fayre. The group continues to play each Monday afternoon 2pm-3.30pm in the village hall, new players would be welcome.

**Village Hall:** Iain Wright said they are currently organising repairs to the floor. General maintenance is ongoing and upgrading of the toilets is required.

**St James' Church:** Chris Hunt said the Fete was once again a marvellous success. Reporting on the LSS plans (for a Lavatory, Served and Storage) he said the Diocesan Advisory Committee had given their approval to the project. In addition to that expenditure costly work to the stonework will be required within the five year plan.

The new vicar, Revd Mark Woodrow, will be moving into Nayland vicarage and licensing will take place on 21st July at St Mary's Stoke by Nayland.

**Mothers & Toddlers:** Numbers attending have improved and they have volunteers to take over in September.

**AOB: Village Hollyhocks:** An indiscriminate weedkilling regime had taken place around the village which decimated the village hollyhocks. HortSoc has complained to Suffolk County Council on behalf of its members and following submission of photos for the Community Times SCC have been asked for a statement - a response to both is awaited. Bryan Smith said he asked the person spraying the weedkiller (who was on a quad bike) not to spray the Hollyhocks but the response was he was instructed to spray everything. The Conservation Society have been told that SCC do not know the identity of who administered the weedkiller. This mystery continues!

**Date of next meeting:** will be **Wednesday 7th September** in the Church Hall at 8pm with Exec at 7.30pm.



St James' & St Mary's Churches

# Shared Harvest Supper

Nayland Village Hall  
Friday 23rd September  
7 for 7:30 pm

*Please bring cold meats, quiches, salads etc.  
plus desserts to share with your fellow guests  
Soft Drinks only will be available*

**TICKETS**  
£4-00

Children need a  
'Free' ticket

Available from the Post Office



**Nayland & District Horticultural Society**  
Autumn speaker

## Simon White

returns to Nayland to talk about:  
**'Highlights of Chelsea & Hampton Court'**

Simon is a knowledgeable and charismatic speaker and will enlighten us about these shows; his and share his experiences and anecdotes.

## Tuesday 18th October

7.40 for 8pm Church Hall, Bear Street  
All welcome  
[www.naylandhortsoc.org.uk](http://www.naylandhortsoc.org.uk)




## The Village Lunch

**Wednesday 19th October**

11.45 am for 12 noon, Lunch at 1pm  
Nayland Village Hall

An illustrated talk by **Mark Mitchels**

**'The Lost City of Dunwich'**

Tickets: £12.50 available from 19th September to 15th October at Nayland Post Office (afternoons).



Woodland Corner



## Cake Sale

**Saturday 8 October**

from 8.45 am (*while stocks last!*)

Outside Kerridge's - Court Street

Please come along and support  
Woodland Corner and give yourself  
a treat by buying our delicious  
home made cakes.

For further information, contact Woodland Corner  
tel: 01206 263054 e-mail: [enquiries\\_wc1@btconnect.com](mailto:enquiries_wc1@btconnect.com)  
web: <http://woodlandcornernayland.blogspot.com>  
Registered Charity 1035330





# Royal British Legion

Visit to

## BRIGHTLINGSEA

on 14th September

This will include a visit to the Museum, a local boatyard and a boat trip and lunch in the Yacht Club. Brightlingsea has a very interesting history. The cost will be £20 per person and we shall be going in private transport. Please contact John Partridge on 263733 or [jandcpartridge@yahoo.com](mailto:jandcpartridge@yahoo.com) as soon as possible as numbers are restricted.



# Nayland Baby & Toddler group

Bring your child, trained or not, to the Nayland playgroup.

Great for:

- exercise & agility
- sociability
- obedience(!)
- healthy treats

Fridays during term time, 9.30am - 11.30am at Nayland village hall.



NEW team and activities for the Autumn Term

Nayland & District Horticultural Society

# CHILDREN'S & FAMILY'S CLASSES NAYLAND FLOWER SHOW

Saturday 6th August

2pm-5pm Nayland Village Hall

An animal or person made from vegetables and/or fruit

Cardboard Creation

'I grew this myself'

Jar of named wild flowers

Decorated cresshead

Garden-on-a-plate

Photo: 'I took this photo myself'

Decorated fairy cakes



Entries in by 3 August. Children's classes are free to enter. Youngsters can also enter other classes for: Vegetables, Fruit, Flowers, Flower Arranging, Cookery, Preserves, Art, Craft & Photography

Show schedules available at local shops, Lorraine 262807 or [www.naylandhortsoc.org.uk](http://www.naylandhortsoc.org.uk)



Save the date!



## Fun Ladies Tennis Tournament And Lunch

In aid of The Friends of Wiston Church  
To be played on various courts in Wiston.

**Monday 19<sup>th</sup> September**

9am start to finish around 2pm

Contact Caroline Ross-Stewart  
[wistonfriends@gmail.com](mailto:wistonfriends@gmail.com)

Nayland-with-Wissington Conservation Society

Registered Charity No. 268104

## COURT KNOLL - PAST, PRESENT & FUTURE

by Dr Tim Dennis  
and the Survey team

**MONDAY 10<sup>th</sup> OCTOBER**

7.15pm for 7.30pm  
Nayland Village Hall

All are most welcome

[www.naylandconservation.org.uk](http://www.naylandconservation.org.uk)

Nayland-with-Wissington Conservation Society

Registered Charity No. 268104

Visit to:

## COLUMBINE HALL NEAR STOWMARKET



**TUESDAY 13<sup>th</sup> SEPTEMBER**  
in the afternoon

As before it is a private visit. Numbers are limited.

The cost is £16 per person.

If you are interested in the visit please contact Mike Hunter  
on 01206 264100 or email [mikejphunter@gmail.com](mailto:mikejphunter@gmail.com)

[www.naylandconservation.org.uk](http://www.naylandconservation.org.uk)



## STOUR BORDER Country Music Club

Nayland Village Hall 7.30 - 10.30  
Admission, usually £5, doors open 7pm  
No bar – please bring your own drinks.  
Tea/coffee & light refreshments available

**SUNDAY 21<sup>ST</sup> AUGUST**

**'Jonny & Lynnette'**

*A welcome return for this popular duo*

**SUNDAY 25<sup>TH</sup> SEPTEMBER**

**'Best of Friends'**

*A popular return for one of the top duos on the circuit*

**SUNDAY 23<sup>RD</sup> OCTOBER**

**'Kevin Barry'**

*A welcome return for this crowd pulling artist*

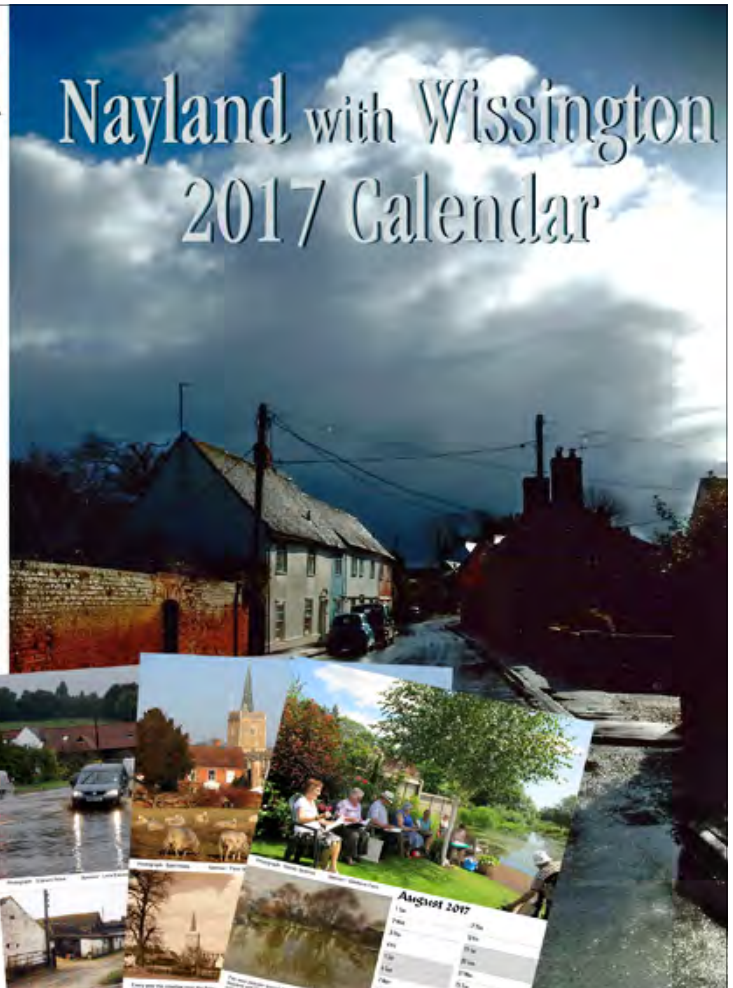


# Nayland with Wissington 2017 Calendar

Fantastic new views of the parish  
accompanied by historic views and notes  
Still priced at just £5 !  
They make ideal gifts

Calendars will be on sale from  
6th August at the  
Nayland Flower Show

After this they will be on sale at  
various village events, the Post Office,  
Blue Owl, Hatten's Stores and Forget-Me-Not



Nayland & District  
Horticultural Society

# SUMMER FLOWER SHOW

**Saturday 6th August**  
2pm-5pm Nayland Village Hall - Admission 50p  
Produce Stall, Teas, Raffle, Nayland Calendar 2017




Classes for: Vegetables, Fruit, Flowers, Flower Arranging, Cookery, Preserves, Art & Craft, Photography, plus Children's & Family's Sections - open to non-members - entries by 3rd August  
Show schedules available at Nayland shops, Lorraine 262807 or [www.naylandhortsoc.org.uk](http://www.naylandhortsoc.org.uk)



**NAYLAND WITH WISSINGTON PARISH COUNCIL'S**

**BEST KEPT ALLOTMENT COMPETITION 2016**

Winners: 1st Trevor Smy (No 2), 2nd Tom Gardiner (No 6), 3rd Jim Baird (No 1a)

*Congratulations to the winners.*

*Prizes will be presented at the Nayland flower Show  
on 6th August, held in the Village Hall from 2-5pm. Presentations begin at 4.30pm.*

Under the auspices of NAYLAND WITH WISSINGTON  
**COMMUNITY COUNCIL**  
The Ever Popular Fun  
**VILLAGE QUIZ**  
**Friday 7th October**  
**Village Hall**  
**7.30pm sharp start**  
**£12 a table of Four**  
**Bring your own refreshments**  
Further application forms in Forget Me Not, 2 Birch Sreet  
or email [rachel\\_hitchcock@hotmail.com](mailto:rachel_hitchcock@hotmail.com)  
Further details from:  
Rachel Hitchcock 263169  
Don't worry if you are not a 4  
let us know & we can pair you up

**Application for the Village Quiz**

Name:

Telephone:

Team Name:

Please submit in envelope with payment to:  
Forget Me Not Stores, 2 Birch Street or to Rachel Hitchcock, 21 Stoke Road

# HARE & HOUNDS LEAVENHEATH

traditional country freehouse with 3+ real ales  
pool table - open fire - beer garden & patio - play area

## DON'T FORGET ABOUT OUR BURGER NIGHTS

Homemade beef burger with all the  
trimmings plus a pint of your choice for £8  
**EVERY WEDNESDAY!**

PUT OUR BEER FESTIVAL IN YOUR DIARIES!

## SUMMER BEER FESTIVAL

Thursday 4<sup>th</sup> - Sunday 7<sup>th</sup> August

10+ Real Ales plus real cider & craft beer  
(and a bouncy castle for the kids)

## LIVE MUSIC

2 live bands on Saturday 6<sup>th</sup> August from 6pm  
with smoked meats from "Meat The Bruce"

### OPENING HOURS

tuesday, wednesday, thursday 12 - 3pm & 5 - 11pm  
friday & saturday 12 - 11pm  
sunday 12 - 10pm  
closed all day monday

### FOOD IS AVAILABLE

tuesday - saturday 12 - 2pm & 6 - 9pm  
sunday 12 - 3pm



[www.hareandhoundbleavenheath.co.uk](http://www.hareandhoundbleavenheath.co.uk)



01787 212398

# M & J REGAN

## Building Contractors

A local family company who have been trading  
in the area for over 35 years.

01206 264019

07803 604254

[m.regan3@sky.com](mailto:m.regan3@sky.com)

GARDEN DESIGN  
BORDER DESIGN  
PLANT SOURCING  
GARDEN  
OVERHAUL  
GARDEN  
GIFT VOUCHERS



Call Angela for a consultation:

**01787 212264**

**07974 375254**

## Give your garden the makeover it deserves!

We are a local garden design  
company and can offer a  
complete design, construction  
and maintenance package  
or just a planting plan for a  
single border.

[WWW.ZINNIADDESIGN.CO.UK](http://WWW.ZINNIADDESIGN.CO.UK)



# Nayland House

Off Bear Street  
Nayland CO6 4LA

We offer long and  
short term care for elderly  
and dementia residents  
in our beautiful home set  
in the heart of the village

You are very welcome to  
visit – come and see our  
excellent facilities

For more information  
please telephone:  
**01206 263199**

# TURNER & MAY LIMITED

Plumbing and Heating Engineers

[www.turnerandmaylimited.co.uk](http://www.turnerandmaylimited.co.uk)

General Plumbing  
Central Heating Installation  
Energy Efficiency Boiler Installation  
Boiler Maintenance  
Underfloor heating  
Water Softeners  
Bathroom Design & Installation  
Free Estimate

We offer a fully comprehensive range  
of domestic plumbing and central heating services.

Excellent local reputation

Over 25 years of experience

Tel/Fax: 01206 263392

Mobile: 07966 286603 / 07885 075031

Email: [brian@turnerandmaylimited.co.uk](mailto:brian@turnerandmaylimited.co.uk)





# N.P. & S.G. Evans Plumbing & Heating

Hill Farm, Wiston, Nayland, Colchester CO6 4NL  
npsgevens@gmail.com

**Tel: 01206 262091 Mob: 07979 535670**

For all your plumbing & heating requirements.  
Most makes of oil boiler serviced.  
Also guttering maintenance & replacement.



**Water Lane**  
**ARCHITECTS**  
An RIBA Chartered Practice

- Architectural services for new and existing buildings
- Houses, schools, commercial and development schemes
- Designs for greater sustainability — AECB member

Chris Exley, RIBA, AECB  
info@waterlanearchitects.co.uk 01206 890178  
www.waterlanearchitects.co.uk  
Water Lane, Little Horkesley 07827 414847

## Paint it, Paper it, Love it!

Stockists of Farrow & Ball, Little Greene  
and Paint Library designer paints.



Decorating, Glass & Building Centre  
Layer Road, Colchester CO2 9JY  
Phone 01206 216048  
sales@kentblaxill.co.uk  
@KBColchester • f/KentBlaxill  
Buy online www.kentblaxill.co.uk



## Nayland Dental and Cosmetic Clinic



18 High Street, Nayland, Suffolk, CO6 4JF

**Family Dentist Teeth whitening**  
**Children welcome Hygienist**

## PRIVATE DENTISTRY AT AFFORDABLE PRICES

Free examination for children of school age with full paying adult

**DENPLAN AVAILABLE**  
**FREE SMILELIGN CONSULTATIONS**  
**FACIAL REJUVENATION TREATMENTS**  
**TEETH WHITENING - only £149**

All treatments carried out by an experienced qualified Dental Practitioner: Dr DG Figaji B.Ch.D (STELL)

**Early Morning & Late Evening Appointments Available**

**FREE ORAL CANCER SCREENING**  
**GIVEN WITH EXAMINATION**

Call us to book an appointment or request an  
information pack **01206 262262**



**We are open:**  
**Monday - Saturday**  
**9.30am - 5pm**



We have a wide range of gifts and cards for  
all ages, including toys, scarves, jewellery,  
candles, home gifts and more.

You can also come in for coffee and cake at  
anytime - craft activities are optional!



[www.blue-owl.co.uk](http://www.blue-owl.co.uk)

Tel: 01206 263350

The Mill, Mill Street, Nayland, CO6 4HU.



## PETER MOSS & SONS

Providing all aspects of  
vehicle maintenance



**68 Bear Street  
Nayland  
Tel: 01206 262866**

**SERVICING ■ REPAIRS**

## BUGG SKIP HIRE

**For All Your Waste  
Disposal Requirements**

- Excellent Service
- Lowest Prices
- Various Sizes to Suit Every Situation



**Tel: 01206 262605**

**[www.buggskiphire.co.uk](http://www.buggskiphire.co.uk)**

The Woodyard, Gravel Hill, Nayland, CO6 4JB



*Gladwins Farm*

*Harpers Hill*

*Nayland*

*Suffolk CO6 4NU*

*Tel: (+44) 01206 262261*

*Fax: (+44) 01206 263001*

*E-mail: [contact@gladwinsfarm.co.uk](mailto:contact@gladwinsfarm.co.uk)*

*[www.gladwinsfarm.co.uk](http://www.gladwinsfarm.co.uk)*

- Award-winning self-catering cottages – sleeping 2–8 people. Charming conversions of period farm buildings, some are designed to be accessible by accompanied disabled visitors, some luxury cottages with private hot tubs.
- Moving house? Longer tenancies in the Winter period can be arranged.
- Swimming lessons throughout the week. Fully air-conditioned in a lovely building. Available for childrens' parties.
- Guests have the use of the pool, sauna, hard tennis court and playground. The lake is stocked with coarse fish. Pets welcome.

*Brochure and details available from Stuart and Susie Bradshaw. 01206 262261*

*[www.gladwinsfarm.co.uk](http://www.gladwinsfarm.co.uk)*






**The Quay School of Theatre Dance**

Classes held in Sudbury  
and  
Ixworth nr Bury St. Edmunds  
Pupils accepted from 3 years to adult

**EXAMS • SHOWS  
SUMMER WORKSHOPS**

For further details please contact:  
Mrs Marie Morris A.I.S.T.D. Dip. C.D.E.  
Telephone: 01359 271057  
Mobile: 07766 290161  
email: quaydance@hotmail.co.uk  
www.quaydance.co.uk



*Ballet - Modern - Jazz  
Tap - Street - Fitsteps*

 Quay Dance

**IMPERIAL SOCIETY OF TEACHERS OF DANCING**

*Matthew Gough*  
MPTA, Btec. HND, C&G Pts 1&2

**PIANO TUNING  
PIANO SALES AND HIRE**



- PIANO TUNING,  
REPAIRS AND  
FULL RENOVATIONS
- QUALITY PIANOS  
INCLUDING YAMAHA MODELS  
FOR SALE OR MONTHLY HIRE!
- VARIOUS MONTHLY RATES  
A GREAT WAY TO TRY A QUALITY  
PIANO BEFORE YOU BUY

Frinton-on-Sea

*Established since 1988 and Fully Qualified  
Covering the Nayland area for over 25 years*

**mpgpianos.com**  
**01255 670780**



## BARNEY THE DECORATOR

### YOUR LOCAL PAINTER & DECORATOR

Quality Decorating Applied To Last!

Fully Insured - Friendly Professional Service  
No Job Too Big or Too Small

Call Barney for your free quote: 01787 210166 or 07856 540664  
or email: barneythedecorator@gmail.com 3 Harrow Street, Leavenheath CO6 4PW

## PRINCIPLE HEATING SOLUTIONS

Proactive from conception to completion

e: daren@principleheatingsolutions.co.uk  
w: principleheatingsolutions.co.uk



**t: 07976 151595**

**oil biomass**

**Wood burners**

servicing  
installation

logs chips pellets



**Recommended Installer**

**Renewable Heat Incentive (RHI)  
Grants available**

Supply and installation of wood burning  
stoves and boilers

Oil boiler servicing and installation

Supply and installation of oil tanks

**Please call or email for your free  
no obligation quote**



**HETAS**

74 HUNGERDOWN LANE  
LAWFORD  
COLCHESTER  
ESSEX  
CO1 2LX




## ST JAMES CHURCHYARD WORKING PARTY

### Saturday 29 October

from 9am – 12 noon



All welcome, no skill necessary.  
Tea, coffee and biscuits provided.

**PLEASE BRING GLOVES, RAKES,  
SECATEURS, WHEELBARROWS, ETC**

For further details contact  
**James Carver: 262970**

## VILLAGE HALL GARDEN WORKING PARTY

### Saturday 19 November

from 9am



Please come along and join us  
and make it a social occasion.

**IT WILL BE USEFUL TO BRING  
TOOLS, GLOVES, SECATEURS,  
WHEEL BARROWS, ETC.**



Nayland & District Horticultural Society  
Coach outing to

## Wrest Park and Hopleys Plants & Gardens Sunday 4th September

Coach leaving Nayland 8.30am, return from Hopleys Plants 5pm. The cost will be £30 (£21 *English Heritage* members) to include travel, entry to both venues and a tour of Hopleys Gardens. Open to non-members.

These are popular venues so please book early to avoid disappointment. Please complete the booking form below and send, with your payment to:  
L Brooks, 50 Gravel Hill, Nayland CO6 4JB or  
place in the Community Times box in the Post Office.

Cheques payable to *Nayland & District Horticultural Society*.

For more information or a cash payment please ring Lorraine on 262807 or email: [lorraine.nayland@btinternet.com](mailto:lorraine.nayland@btinternet.com), or visit [www.naylandhortsoc.org.uk](http://www.naylandhortsoc.org.uk)

*At Wrest Park discover over 90 acres of beautiful gardens showcasing French, Dutch, Italian and English styles side by side and on the ground floor of the Mansion House learn about the story of the estate and the de Grey family who lived there for over 600 years. The gardens and Dairy Sculpture Gallery contain a remarkable collection of 18th- and 19th-century statues.*

*Hopleys in Much Hadham has a fine four-acre garden with some excellent plants, and the nursery, now one of the finest perennial nurseries, was established in 1968. The nursery offers an extensive choice of hardy shrubs and perennials, with many half-hardy plants too.*

## Wrest Park and Hopley's Plants & Gardens Booking Form

You will receive an acknowledgement of booking.

I would like to book ..... seat(s)    English Heritage Members .....    Payment attached: £.....

Name: ..... Tel: .....

Address: .....

Email: .....

Names of Guest/s: ..... Where boarding coach: Stoke Rd / Parkers Wy / Harpers Est



## SEE IT, SNAP IT, SEND IT...



### NAYLAND MOBILE LIBRARY

**Route 20 : High Street P.O.**  
Saturdays at 10am-11.15am,  
every four weeks

**20 August - 17 September**  
**15 October - 12 November**

**Route 9 : Parkers Way**  
Saturdays at 3.55pm-4.30pm,  
every four weeks

**6 August - 3 September**  
**1 October - 29 October**

Tel: 01473 263838  
[www.suffolklibraries.co.uk](http://www.suffolklibraries.co.uk)

Thanks to Chris Hunt for capturing this amusing scene entitled **'Reflections at the End of the Pier'.**

View this in the colour version of the CT at [www.naylandcommunitycouncil.org.uk/CommunityTimes.html](http://www.naylandcommunitycouncil.org.uk/CommunityTimes.html)

If you have a snapshot taken in the parish to feature in a future issue please send it to [lorraine.nayland@btinternet.com](mailto:lorraine.nayland@btinternet.com)

## HOLLYHOCK CHARM .....



## NOW YOU SEE THEM, NOW YOU DON'T...

In early June the village grapevine was buzzing with shock and dismay at the decimation of the village's beloved Hollyhocks. There were several reports of a possible culprit seen, and even questioned, spraying weed-killer from a quad bike in various areas of the village.

The question on everyone's lips was **"who has murdered our Hollyhocks?"**

But the answer has not yet been found!

Several village organisations made enquiries with Suffolk County Council, including the Community Times, who was just issued a reference number due for a response 30 days from 28th June.

So while some areas of our picturesque village, the characterful streets and quaint alleyways are looking positively naked here is a reminder of happier times gone by.

We hope for their eventual return so residents can once again be cheered by them, visitors can be charmed by them, photographers can take spectacular shots of them and artists can capture them in paint.







# Nayland with Wissington Society News



## ROYAL BRITISH LEGION

Secretary: Andrew Gowen 262534 [parkersag@yahoo.co.uk](mailto:parkersag@yahoo.co.uk) Chairman: Alex Murrison 262369

We had an enjoyable visit to Debach Airfield Museum organised by David Slater and we appreciated that all the volunteers who support the Museum came out to make our visit most enjoyable. Apart from being a US airbase during the War, it also provided interesting exhibits on how we all survived on limited rations and material during the war. The climax was the lunch in the local Pub.

At our recent meeting we unanimously agreed that the Street Fayre was a great success and congratulate Claire Buller and her team in organising such an enjoyable event. We decided to allocate £50 from the money raised to the Community Council who provided much of the organisation and entertainment at no cost. It was a memorable anniversary.

Mike Hunter gave us a riveting talk on the Landmark Trust at our recent meeting. Few of us realised the extent of the Trust's activities and we are all better informed and certainly will be considering staying at some of the Trust's unusual properties.

We are all disappointed that our Women's Section has disbanded and draw your attention to its interesting history which is reported elsewhere in this edition of the Community Times. We hope that its members will join our Branch which is not restricted to Men – in fact we have had women members in the past.

The Secretary has been authorised to write to HQ objecting to the centralisation of collecting subscriptions. It has resulted in a huge loss of membership nationally and a loss of contact with our less able local members who had to be visited to collect subscriptions.

We have two very interesting visits which are open to everybody and we welcome non members.

**14<sup>th</sup> September visit to Brightlingsea** which will include a visit to the Museum, a local boatyard and a boat trip and lunch in the Yacht Club. Brightlingsea has a very interesting history. The cost will be £20 per person and we shall be going in private transport. Please contact John Partridge on 263733 or [jandcpartridge@yahoo.com](mailto:jandcpartridge@yahoo.com) as soon as possible as numbers are restricted.

**26<sup>th</sup> October visit to Sizewell Nuclear Power Station.** 8.30am start from the Surgery. Tickets will be about £20 depending on numbers and will include a pub lunch. We need to have names by 1 September for security reasons and everybody must take means of identification such a driving licence or passport. Names to Andrew Gowen 262534 or [parkersag@yahoo.co.uk](mailto:parkersag@yahoo.co.uk). This is an interesting trip so get your names down soonest.

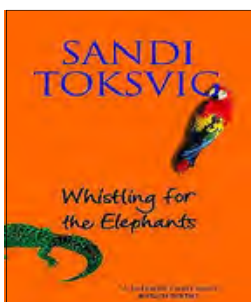
Our next meeting will be in the downstairs Garden Room at the Anchor at 8pm on 26 September with pre-drinks starting in the bar at 7.30pm



Visit to Debach Museum on 8 June 16 sitting on a load of bombs !



Our pitch at Nayland Street Fayre, members with Claire Buller who coordinated the event



## BOOK CLUB

Jane Barbrook 263619 [janebarbrook@hotmail.com](mailto:janebarbrook@hotmail.com)

The book club has about 7-8 members meeting regularly. Anyone interested in joining is welcome to contact Jane Barbrook.

We have been reading a variety of books; the last book was *Firefight* by Chris Rya and the current book, which we will meet to review on 9th August is *Whistling for the Elephants* by Sandi Toksvig.





## TABLE TENNIS CLUB

Neil Barbrook 263619 or 07817 449920 nbarbrook@hotmail.com

The Nayland Table Tennis Club members were very impressed with how many visitors to our stall took up the challenge of playing a game in the open air in the centre of the village. We were pleased that so many young people tried the game.

Those of us who were teenagers in the 1960's remember how popular the game was then, so we fitted in well with the theme.

We also ran a 1960s quiz for the Community Council which was very popular, particularly among baby boomers, who passed on their reminiscences - the winner was Linda Butcher.

Playing with four tables, we have plenty of room for everyone, and new members are still very welcome so just come along to the Village Hall to see us on Mondays at 2-3.30pm or ring Neil Barbrook on 263619.

No previous experience necessary !



## HORTICULTURAL SOCIETY

Sec: Lorraine Brooks 262807  
lorraine.nayland@btinternet.com

[www.naylandhortsoc.org.uk](http://www.naylandhortsoc.org.uk)

Chair: Trevor Smy 262022



The weather was fine for our recent enjoyable outing to Hindringham Hall Garden and Oxburgh Hall & Garden.

We are now taking bookings for the coach outing to **Wrest Park** in Bedfordshire and **Hopleys Plants and Gardens** in Hertfordshire on Sunday 4th September leaving Nayland at

8.30am. The cost will be £30 (£21 for *English Heritage members*), to include travel, entry to both venues and a tour at Hopleys. Like many of our activities this is open to non-members. Further details are available on our website or from the secretary. Please book early to avoid disappointment.

**Wrest Park** has over 90 acres of beautiful gardens showcasing French, Dutch, Italian and English styles side by side and on the ground floor of the Mansion House a display about the history of the estate and the de Grey family who lived there for over 600 years. The gardens and Dairy Sculpture Gallery contain a remarkable collection of 18th- and 19th-century statues. **Hopleys in Much Hadham** has a fine four-acre garden with some excellent plants, and the nursery, now one of the finest perennial nurseries, was established in 1968. The nursery offers an extensive choice of hardy shrubs and perennials, with many half-hardy plants too. *A booking form can be found on page 20.*

We were delighted that the unpredictable British weather was kind again for HortSoc's summer garden party. During the evening about sixty members enjoyed a tour of the beautiful garden at Parker's, revealing its bountiful variety of plants and produce. The winner of the ticket draw was Pat Dewsbury. Grateful thanks are due to the committee for putting it all together and especially to Andrew and Sue Gowen for their fantastic hospitality. Everyone said they thoroughly enjoyed the evening - in turn the committee thank members for coming.

HortSoc took part in the Community Council's Street Fayre to celebrate their 50th anniversary by having small stall and running a treasure hunt - the winner was Arthur Bunting. It was a beautiful sunny day full of atmosphere and gaiety and nice to watch the performances from the shade and travel back in time listening to the tunes of the 60s.

Relaxation over, the Flower Show is fast approaching! In the lead up to the show the **best hanging basket competition** will be judged in situ on 30th July. There are only a few days left to submit your entries for the **Flower Show on 6th August**; Wednesday 3rd August is deadline. Schedules are still available in local shops or on our website. *See the adverts on pages 12 & 14.* There are 89 classes for vegetables, fruit, flowers, flower arranging, photography, art, craft, cookery and country drinks. Subjects for the photography section will be 'An Interesting Building' and 'A Country Lane', and in the children's section 'I took this photograph myself'.

This is a friendly village show and fellow entrants help each other as well as engage in some friendly banter, so go on... give it a go! We look forward to seeing what has been successful over the year and hope to see you at the show, whether you are participating or just admiring the exhibits and enjoying refreshments.

Other dates for your diaries; Tuesday 18th October when the subject of Simon White's talk will be 'Highlights of Chelsea & Hampton Court', as usual in the Church Hall at 7.40 for 8pm and on Monday 14th November the subject of Edward Martin's talk at our joint meeting with the Conservation Society will be 'The Lost Gardens of Suffolk' in the Village Hall.



*One of Norfolk's hidden gems Hindringham Hall is a fine Grade 2\* tudor house with a moat dating from c1200 and beautiful gardens*



# STREET FAYRE THANKS

A big thank you to everyone involved in the Street Fayre on 17th July 2016 celebrating 50 years of the Community Council. It was a wonderful event with a fabulous atmosphere and reflected the spirit of the Community Council in true Nayland with Wissington style. Whether you moved your car from the High Street, sung in the choir, attended a society stall, compèred the event, entered the fancy dress parade, served a Pimms, dressed a doll, manned the car park, were a member of the set up committee or just attended the event you were part of a day to remember.

The praise for the event has been coming in from far and wide and I can honestly say it would not have happened without everyone's cooperation and support.

**Claire Buller, CC Street Fayre Team**



## FUN AT THE FAYRE

Sights and sounds of the 1960s were highlighted when Nayland with Wissington Community Council held its street fayre on July 17.

The event celebrated the council's 50<sup>th</sup> anniversary and the gaily decorated village centre was packed with stalls.

The fayre was opened by council president Ken Willingale who served on the original committee and recalled how the first chairman, the late General Fairbanks, had led a project to have a village hall built in six years.

The ceremony was followed by Nayland School Choir singing a medley of 60s songs and during the day performances were staged by Nayland Choir, the Village Players and the Caverners 60s band.

There were two art exhibitions in St James's Church and a display illustrating the council's history and current activities.

Other features included vintage car rides, a shooting range, a community art project, photo booth and a children's roundabout.

Apart from local people the fayre attracted hundreds of visitors from further afield and was rated "a huge success" by organising committee chairman Claire Buller.

She said: "It was a great team effort and there was a wonderful atmosphere throughout the day. A big thank you to Lorraine Brooks for compiling the council's history display."

First prizewinners in the fancy dress competition were: under 7 Alex Heaven, 8-11 Honey Castles-Brown, adults Sharon Pentney, group winners The Hippies, Mig and Peter Drew and Mandy Cook.

Dressing the doll competition: under 7 Sophia Anta-Cannings, 8-11 Honey Castles-Brown, adults Rebecca Gladwell. Winner of the Community Council's 1960 Quiz was Linda Butcher.

Chris Hunt was the fayre's MC.

*Photos: [top L-R] the bustle of the fayre, dancin' in the street to The Caverners band, [middle L-R] MC Chris Hunt with Ken Willingale, president of the Community Council, opening the fayre, youngsters enjoying the photo booth and Punch 'n' Judy, [bottom L-R] Claire Buller and Will Hitchcock with winners of the Dress the Doll competition, MC Chris Hunt announcing winners of the Fancy Dress.*







## NAYLAND WITH WISSINGTON CONSERVATION SOCIETY

Hon. Secretary: Andora Carver 262970  
carversnayland@talktalk.net

[www.naylandconservation.org.uk](http://www.naylandconservation.org.uk)  
Chairman: Mike Hunter 264100

In spite of the chilly weather, Open Gardens was much enjoyed by a good number of visitors. Very many thanks to the 17 gardens owners who worked so hard to make their gardens look wonderful. Thanks also to the cake bakers and tea and ice cream helpers. The final surplus was about £1,500 which will go towards conservation projects.

Still unclaimed is a floral tray, a glass microwave plate and a wooden chopping board inscribed "3rd September 2011. All Our Love". Please contact Andora if they are yours.

Chris Hunt compiled a splendid evening of Past Times in Nayland and Wiston for our June Open Meeting. These included a fascinating colour film of a British Legion parade at the Jane Walker Hospital in the early 1950s. David Slater gave an insight into traditional farming methods adopted by his father, John, when he took on the tenancy in 1958 and the audience contributed more stories of the old days.

After discussion, the Committee has decided to bring forward the start of our Open Meetings to 7.15pm for 7.30pm. It is hoped this earlier time will be more convenient for our members and will take effect at our next meeting on October 10th.

A visit to Columbine Hall, Stowmarket has been arranged for September 13th. This is a medieval moated manor house with a fascinating history and the private visit with a tour conducted by the owners, costs £16 per person including tea. To book a place, please contact Mike Hunter on email: [mikejphunter@gmail.com](mailto:mikejphunter@gmail.com).

When this edition of the Community Times comes out, we hope very much that Historic England will have given permission for limited excavation at Court Knoll during September. If anyone would like to be involved please contact Andora or Sally Bartrum. Further details will be on our website and the Society's noticeboard.

Last but not least, the Committee are still looking for a volunteer to take on the role of Membership Secretary. The work is largely computer based, but occasional attendance at meetings would also be an advantage.

The Society was delighted to be involved in the Nayland Street Fayre on 17th July. There were 15 entries to our history quiz, kindly compiled by Wendy Sparrow.

The winner of the £10 Kerridges meat voucher was John Baker and the runner up with a £5 voucher was Julie Lay. Many thanks to all who took part.



*Open Gardens*



*Past Times in Nayland and Wiston : compèred by Chris Hunt*



## BOWLS CLUB

Secretary: Eva Rolfe 263151

On May 18th Polstead came to us for our first match of the summer league; the first two games we just managed to win and we were 8 shots up, one team in the second session had a very good win and the second team lost we still had the shot advantage so an 8-2 win.

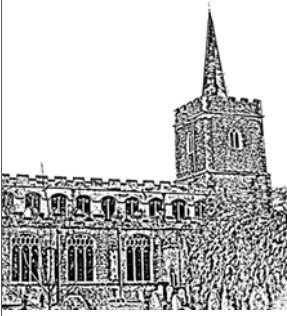
June 1st saw us go to Polstead; in the first two games one team lost 7-12 and the other won 11-7, in the second games one was drawn and the other team lost having lost the shots as well we lost 3-7. On the 8th June Burstall came to us; the first two teams both had good wins and the second teams both lost. Luckily we managed to keep the shot advantage winning 6-4. On 16th we went to Stratford St Mary; the first two teams both had very good wins and the second games carried on the form - a 10-0 win was a real boost. On 29th we went to Bramford again; the first two teams won their games, unfortunately the second two just lost, we kept the shots so it was a 6-4 win.

On July 6th we went to Sproughton where no visiting team has ever won and we were no exception, we did not manage to win one game, it was a 0-10 loss. On 13th July Hintlesham came to us; the first two teams had very good wins and the second games both went our way as well. A 10-0 win levelled the result of the previous week.

We need to keep winning to try and win our division.

**Fixtures:** August - 3rd Stratford St Mary home, 10th Sproughton home, 15th Burstall away, 24th Hintlesham away  
September - 7th Bures away, 14th West Bergholt home - both friendlies

*Sylvia Bond*



## THE FRIENDS OF ST. JAMES' CHURCH, NAYLAND

Registered Charity Number 1052641

Chairman: Alan Edwards 262800 alan@edwards-online.net

### THE LAVATORY/SERVERY/STORAGE IN ST. JAMES'

As the last edition of the Community Times went to press, so the DAC responded to our Application to put the LSS into St. James'. They suggested an informal meeting, which took place on June 15th. At this Meeting, 4 members of the Diocesan Advisory Committee (DAC) and 4 from our P.C.C. fully

discussed the project. Peter Hinchcliffe - the Friends Architect and Alan Edwards were also present.

After much discussion, it was agreed that it was not necessary to floor over the area to provide storage - it was felt that this storage was not immediately necessary but could be pursued by the P.C.C. at some point in the future if wanted. The DAC supported the plan for the Lavatory and Servery, suggesting some changes:

1. That the step from the LSS area to the Porch be cut back and levelled.
2. That the floor (which would have to be taken up to provide a drainage route) be re-laid level, with the slabs in the same position as now  
Both these really as the result of eliminating trip hazards.
3. That the existing door and window into the School Room from the LSS area be securely shut but not boarded over on the Vestry side.
4. That our Architect should investigate and recommend routes for the Soil & Vent Pipe and the Ventilation Pipe.
5. That cupboards within the School Room should be kept clear of the Rood Screen.

Given these considerations, the DAC broadly supports the Application. The DAC asked that a new (and more detailed) plan be produced and sent to them, which we will publish as soon as possible. This will enable the DAC to have informal discussions with other Agencies - like Historic England - clearing the way for a full Application. Our Architect is on the case - we hope to submit the new plan to the DAC by September, the full Application following some 3 months later

### STRAWBERRIES AT THE FETE:

We raised a record £216 from sales of Strawberries. Our many thanks go to Hazel Gardiner and her team of willing hullers who made this possible."



### THE VILLAGE LUNCH

Jo Murrison 262369

The next Village Lunch is on Wednesday 19th October 11.45 for 12 noon followed by lunch. The speaker is Mark Mitchels, a very experienced speaker, who will give an illustrated talk on The Lost City of Dunwich. This should be a very interesting talk so please get your tickets early. These will be on sale from Monday 19th September to 15th October priced £12.50 each.

Thank you all for your continuing support.



### NAYLAND AND DISTRICT WOMENS INSTITUTE

President: Jeannette Finch 262993

Secretary: Lorna Rumsey 01787 211975

Our June meeting included an interesting talk about East Anglian place names by Martyn Roper. In a follow up to an enlightening talk last autumn we visited the Shelley Centre for Therapeutic Riding (RDA). We met the horses and some members rode Ebony, the computerised mechanical horse and some sponsored a horse for a year, which only costs £25. The visit enabled us to fully appreciate what a valuable facility the centre is for children and adults with disabilities who get so much from riding and being with the horses.

In July the WI will be selling baguettes at the Street Fayre and the monthly meeting will include a talk by Jane Gaunt about St Nicholas Hospice Charity Shop. On 15th August we will be holding our Afternoon Garden Tea Party, on 19th September Jayne Lawson and Alison Bradshaw will be giving us a Flower Arranging Demonstration and on 17th October Jacqueline Grant will be giving us an insight to Physiotherapy.

If you are interested in joining the WI or would like to come along to any meetings as a guest they are held in the Village Hall at 7.30 pm on the 3rd Monday of the month.

We very much enjoyed the wonderful atmosphere of the Nayland Street Fayre. Our stall quickly sold out of baguettes, slices of cake and tea/coffee/juices.







## NAYLAND ART GROUP

Daphne Berry 262641 Liz Thorne 262664

Nayland Art Group would like to add our congratulations to Claire Buller and her helpers for staging a great Village Street Fayre and thanks for their help in transferring our three art display boards down to the church. The Art Group's display on the pegboards packed with our artworks were sited at the rear of the church plus a further display on a shelf adjacent.

Our display coupled with Anna Boon's Art Class works and sculptures emphasised what a vast array of talent we have in the village and an important contributor to the art world in Suffolk generally.

The Group is mid way through the summer session. We recently went to Newton Green Golf Club for Cream Tea - this has become a popular annual occasion, although nothing to do with art!

On 27th July Daphne has organised a trip to Pin Mill a favourite subject of artists so remember to take your sketch pads / paints, etc plus cameras to help capture the location on the day or for use at a later date.

The group continues to thrive and meets on Wednesday afternoons at 2-4pm.

**Colin Ramsell**



*Just three of the impressive artworks on display*



## NAYLAND FUNDRAISING COMMITTEE

Secretary: Caroline Lowe 263852 caroline.m.lowe@btinternet.com

Our next event on Friday 11<sup>th</sup> November is a Flower Arranging Demonstration with coffee on arrival and followed by a two course lunch with a glass of wine. A minimum of four arrangements will be demonstrated by the florist Amy Curtis from Colchester. These can then be won in a raffle.

We are holding this event to raise funds for Essex Air Ambulance. Please put the date in your diary.

Further details will be available in the next edition of the Community Times.



## NAYLAND SURGERY NEWS

[www.northhillsurgery.co.uk](http://www.northhillsurgery.co.uk)

Rachel Beales, Practice Manager 578070

You will see some new faces around the practice again shortly as August is the month during which our trainee GPs move on in their training. Dr Opute will be leaving us and a new GP will be joining our North Hill Surgery. Dr Katy Daniel and Dr Karen Roberts have also moved on to new ventures and as such 2 new GPs have been recruited to work at North Hill Medical Group (details to follow in the next Community Times). You will also see some new faces in our reception and dispensary teams and I hope you join us in welcoming them to Nayland Surgery.

If you collect/receive your medications from any local pharmacy you may be aware that North East Essex Clinical Commissioning Group have requested that all pharmacies cease ordering medication on behalf of patients. Instead patients will be asked to contact the surgery to reorder their medication.

As we head into the final summer months preparations are being made for the annual flu vaccination clinics. We will be writing to all patients who are eligible for the vaccines as soon as we have confirmation of dates.



## VILLAGE PLAYERS

Chair: Justin Dowding 01206 262217  
jpdowding@gmail.com

[www.villageplayers.co.uk](http://www.villageplayers.co.uk)

Membership: Jill Fernandez 07979 988434  
jillyfern@gmail.com



We had a fantastic turnout to the auditions for our December pantomime, and as I write this, our Director, Emma Wallis, is having to make some very difficult casting decisions!

We will be performing 'Cinderella' on December 1st - 3rd and we are still very interested to hear from people who would like to be involved backstage - be it lighting, sound, props, costume or set building. Just get in touch to find out more!

In other news, Chris Hunt guided us on our annual Village Players walk on June 11th. We were taken for a (reasonably leisurely) stroll around the countryside near Dedham Vale Vineyard, which was followed by tea and cakes. Thank you, Chris, for another entertaining afternoon!

Many of you will have seen the Village Players perform at the Street Fayre on Sunday June 17th. Faced with the prospect of learning *another* script so soon after Blithe Spirit, we took the brave decision of putting on a radio show sketch in the style of the 1960s. Although it was an ensemble effort, special thanks must go to Mary Moriarty for devising a framing script to keep us in the theme of the day, and also to Nick Moriarty for bringing a selection of sound-effect props from his Aladdin's Cave.

Diary Dates: September 1st is our regular meet up at the Anchor pub at 8pm. Everyone is welcome - if you'd like to find out more about the Village Players, please come along! We will also be holding our annual barbecue on September 4th to which all members are invited. We'll send out an email with more information a little nearer the time.

As always, you can find out more about the Village Players at our website <http://villageplayers.co.uk> or by going to [facebook.com/villageplayers](https://facebook.com/villageplayers).



## NAYLAND CHOIR

Chair: Rob Swan 07954 334548 rob.swan@tb9.uk  
Sec: Cathy Allen cathymargaretallen@gmail.com

[www.naylandchoir.org](http://www.naylandchoir.org)  
Twitter at @naylandchoir

### Give choral singing a go this autumn

Ever fancied singing with a choir?

Nayland Choir is so much more than just another village choir. Yes, at the core of our repertoire are classics like the Faure, Mozart and Verdi Requiems, and great pieces by composers like Bach, Beethoven, Schubert and Mendelssohn. But, we have also sung Gilbert and Sullivan, folk songs, songs from the Jazz Age and in a couple of weeks' time we are singing songs from the 1960s at the Nayland Street Fayre. And each year we do the Carol Service at the lovely St James's Church in Nayland.

**Our concert this Autumn is Puccini's Mass (Messa di Gloria) in Nayland Church on Saturday 26 November.** We are very much looking forward to performing this beautiful and very operatic mass. Accompaniment will be from a hand-picked selection of instrumentalists, including strings, woodwind and brass as well as the organ. There will also be tenor and bass baritone soloists.

What we need more than anything to make this performance memorable, is for you to **join us to help sing it!** There are no auditions to join the choir and many existing members have come back to choral singing after a long break (usually since singing in school). A rudimentary ability to sight read does help and, believe me, you will be much more proficient after a few rehearsals.

Choral singing is good for the artist in you, good for your breathing and your brain, and very sociable. I'm sure there are many musicians amongst Community Times readers (and their friends and relations) just looking for an outlet. So come and give it a go for a term.

Rehearsals will start on Thursday 8th September at 8pm in Nayland School. Subscriptions for the whole term are just £35, and include your score hire. Why not take a listen to this wonderful Puccini work to get you in the mood; we recommend Antonio Pappano conducting the LSO and chorus with soloists Roberto Alagna and Thomas Hampson, available on the EMI Classics label from Amazon and iTunes.

Please get in touch if you have any questions. We look forward to singing alongside you this autumn!





## OVER 60s CLUB

Secretary: Barbara Smith 501492

President: Eva Rolfe 263151

In July, in place of our usual meeting, our members joined the Luncheon Club for Over 60s for their summer Tea Party at Longwood Barn. I was a beautiful sunny day to relax in the lovely garden from the shade of the gazebos and arbours and enjoy the delicious tea.

Our next meeting will be on 11th August and on 8th September in place of our usual meeting, we are arranging an outing for members to Stonham Barns.

We meet on the second Thursday of each month; at the Community Centre in Parkers Way at 2 30pm. New members are always very welcome to come along.

*Diana Whiting*



## NAYLAND CINEMA

Chris Thompson Secretary V.H.M.C.

The film on 26th August will be **A Bigger Splash**; this film was beautifully filmed on an Italian island and explores the relationships when rock star (Tilda Swinton) who is vacationing with her boyfriend (Matthias Schoenaerts) is unexpectedly visited by an old flame (Ralph Fiennes) and his seductive daughter (Dakota Johnson).

**A Walk in the Woods** is on Friday 24th June. This film is based on the true story of the writer Bill Bryson's adventures while walking the Appalachian Trail in the eastern U.S.A. The film is full of wit and humour and stars the charismatic actor, Robert Redford.

All films start at 8pm. We have a bar from 7.30pm and an interval for tea and coffee and ice creams. Tickets cost £5 either from the Post Office or on the door. All profits go towards the maintenance of the Village Hall.



## NAYLAND LUNCHEON CLUB FOR OVER 60s

A Monthly Lunch for Senior Citizens ~ Church Hall ~ 12.00 noon for 12.30pm ~ £3  
Olga Alexander on 263923

A great time was had by all at the Luncheon Club for Over 60s Summer Tea Party at Longwood Barn on 19th July!

Members and helpers enjoyed a typical English afternoon tea with sandwiches, cake, strawberries and cream from the cool shade of the gazebos and had a wander round the delightful garden.

There will be no luncheon in August but they will resume again on Tuesday 27th September and Tuesday 25th October. Make a note of the dates in your diary and come along and join the friendly atmosphere for a chat with friends, old and new.

If you would like to join us for lunch just come along. If transport down to the Church Hall is difficult telephone Olga Alexander on 263923 to see if we can collect you.



## NAYLAND BABY & TODDLER GROUP

Leaders: *Amelia Knowland on 07887 563779*  
*Karen Tranter on 07970 968882*

Bring your child – trained or not - to the Nayland playgroup  
Great for: exercise & agility - sociability - obedience(!) - healthy treats  
**On Fridays during term time from 9.30-11.30am in Nayland village hall**

**NEW** organising team and activities for the new Term including:

- 'Autumn' themed activities and crafts in September
- singing/music sessions
- outdoor games
- sit down snack time

Toys for all ages. Something different each week. A great chance to meet other parents and carers over a coffee and a biscuit First session after the summer holidays: Friday 16th September. First visit is free and then £3 per visit. Contact Amelia or Karen - details above.

With sincere thanks to Alice and Michelle for their tenure to date



## NAYLAND SCHOOL YOUTH CHOIR & CHILDREN'S CHOIR

Jayne Kennedy

### NAYLAND SCHOOL SUMMER CONCERT

This year's concert in the Village Hall was a great success with over 70 children involved and a capacity audience creating a fantastic atmosphere. Nayland Children's Choir and Nayland Youth Choir benefited from having four conductors this year, including for the first time Laura Tuck a well-respected musician who also happens to be a former pupil at Nayland!

As usual the children surprised the audience by their level of skill and enthusiasm - from the Kestrel Class Collective (Year 5) and their thought provoking multi-media presentation on saving the rainforest environment, to the Kingfisher Boys (Year 3) who stole the hearts of the audience with their cheeky hip-hop song and dance routine. Year 6 pupils (Tilly Motts, Jasmine Hare, Mia Mayes, Katie Brookes and Jess Miller) demonstrated great vocal maturity whilst dancers Honey Reagan, Chloe Hitchcock, Evie Hughes and Izzy Cochrane entertained us with their original choreography. Pianists Annabel Hitchcock, Matthew Walker, Alex Walder and Oscar Vallois-Davies were all greeted with rapturous applause and the newly formed recorder group wowed the audience with their creative take on some old familiar tunes. The Ukulele Orchestra invited surprise guests (which included several teachers, parents and ex-pupils) as backing singers for their medley of Rock'n'Roll songs; they literally did have the audience rocking!

This year it was fantastic to have some parents joining in with the performances, bringing as they did their own unique skills from flute playing to guitar accompaniment via some seriously rocking ukulele playing! Thanks to Mr Walker and Mr and Mrs Walder.

The school would also like to thank Mr Nick Moriarty of the Village Players for his time and expertise in setting up the stage and lighting.



Photos: Kingfisher Boys (Year 3) and the Kestrel Class Collective (Year 5)



## NAYLAND PRIMARY SCHOOL : YEAR SIX, THE EAGLES

Mrs Kennedy, Year 6 class teacher

### COUNTY CHAMPIONS

To say this term has been busy is a massive understatement!! Once the SAT exams were finished the children were involved in area then county competitions for Kwik Cricket. The boy's team became County Champions at the time of writing this report and are soon to play at the Essex County Ground in Regional finals... watch this space.

### END OF YEAR MUSICAL

As well as the Summer Concert, the whole of the Eagle Class have been involved in the production of their end of year musical – Porridge! Designing and then making scenery, programmes, tickets, posters and some costumes were all part of their learning over the four weeks it took to prepare for the performance. The children also made porridge-related produce for refreshments and kept a spread sheet of ticket sales and expenses. The performance itself in the Village Hall was a great success and demonstrated fantastic collaboration. Solo singing performances from Tilly Motts, Samuel Pigram and Jess Miller were complimented by the fantastic chorus of the remainder of the class. The children choreographed their own dance routines in the show, highlights of which included a techno Little Bo Peep number and a comedic Police girl routine. Lighting and sound were expertly provided by William Leonard under the guidance of Nick Moriarty of the Village Players – who is fast becoming an honorary member of Nayland School!







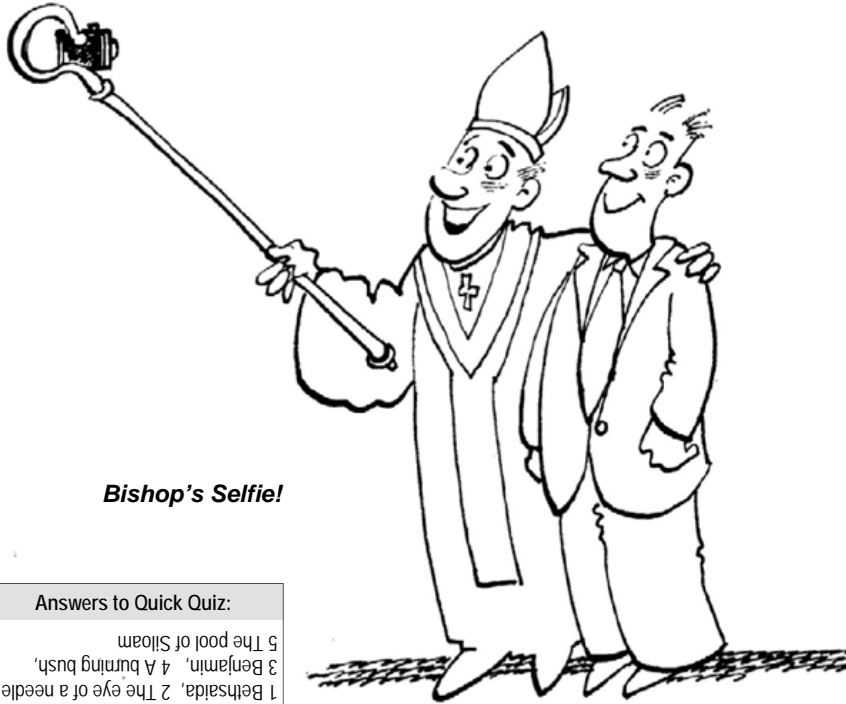
## MESSY CHURCH AT PENTACORD BENEFICE

Churches of Nayland, Wiston, Leavenheath, Polstead, Stoke by Nayland  
For children and parents: Activities, crafts, worship followed by afternoon tea.  
For further information: 01206 262719.



Our 'Who Let the Dads out?' session in June was a great success - the sun shone on our barbeque and our junk-modeled dinky car racetrack was a sight to behold, with some budding engineers creating all sorts of exciting features. We also managed a very enthusiastic rendition of Father Abraham complete with energetic (if slightly uncoordinated) actions!

There will be no Messy Church in July and August – even Messy Church needs its summer holidays! But why not come along and join in the fun at our next Messy Church which will be on Sunday 25th September. The theme will be Giant Slayers and it will take place at St Mary's Church, Stoke by Nayland from 4pm-6pm. All members of the family welcome. As usual there will be fun art and craft activities and games for children and families based around informal worship and afternoon tea. For further information please call 01206 262719.



**Bishop's Selfie!**

### Answers to Quick Quiz:

1 Bethsaida, 2 The eye of a needle,  
3 Benjamin, 4 A burning bush,  
5 The pool of Siloam

### Quick Quiz 'EYE SEE YOU'

All the answers to this Bible quiz are to do with eyes and seeing. *Answers at the bottom of the article.*

1. What is the name of the village where Jesus healed a blind man? (Luke, chapter 8)
2. What eye can a camel go through more easily than a rich man? (Matthew, chapter 19)
3. Joseph talks about his eyes and the eyes of which one of his brothers? (Genesis, chapter 45)
4. What did Moses see in the desert at Horeb? (Exodus, chapter 3)
5. Where did Jesus send the blind man to wash his eyes? (John, chapter 9)
6. What are the eyes like of the one who rides a white horse? (Revelation, chapter 19)



## Woodland Corner

Administrator: Caroline Keep 263054  
e-mail: woodlandcorner@outlook.com

Manager: Cheryl Leeks 263054  
<http://woodlandcornernayland.blogspot.com>

behind Nayland Primary School, Bear Street,  
Nayland, Colchester, CO6 4HY

Registered Charity  
No. 1035330

Woodland Corner is going from strength to strength. Our Preschool numbers have risen dramatically and we are already full for two of our mornings in September 2016. We still have Preschool places on some mornings and all afternoon sessions. Our Breakfast and Afterschool sessions are also very busy but we still have lots of spaces.

This term the Preschool children have been using their investigative, problem solving and critical thinking skills, in Science, Maths and Technology activities lead and planned by individual members of staff. The children have taken part in a wide variety of Transition activities, including visits to Nayland school and we have had visits from teachers from different schools in the area. We had a wonderful Family Sports Day and taken part in a Barnardos Toddle Waddle and everyone has been working very hard, preparing for our 1st ever Preschool Graduation Celebration.

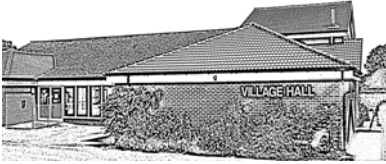
At the Nayland Street Fayre we ran a stall with crafts, glitter tattoos, face painting and more - see photos.



## A PLEA FOR HELP

**The Village Hall Management Committee would very much appreciate some new members joining us.**

The time commitment is not very great but as the adage says "many hands make light work". We meet once a month in the meeting room of the hall for a couple of hours on the first Monday of the month. Our next meeting is on September 5<sup>th</sup> at 7.45p.m. In addition you may be asked to help out at the cinema nights or to show a hirer around the hall. If you feel you can give a little of your time to keep this community facility prospering for the mutual benefit of the whole village, please contact any member of the VHMC.



## VILLAGE HALL MANAGEMENT COMMITTEE

Registered Charity No 304 928

Chairman: Iain Wright 263646

Secretary: Christine Thompson 262825



### JUNE COMMITTEE MEETING

#### MATTERS ARISING & HOUSEKEEPING BOOK

- Housekeeping and Comments books: no new entries.
- The monthly Fire Safety Check was carried out; no problems were found.
- Recommendations which remain to be carried out; signage to fire escape routes to be improved - new signs have been obtained, including an Assembly Point sign, distress alarms will be placed in the disabled toilets.
- Door guards will be placed on the main entrance doors to the Hall

#### MAINTENANCE

- Mary Knapp had reported: A fuse blew in the kitchen during the fete. Locks were called but no fault was found. The kick plate on the chair store had been damaged. This has been removed and will be replaced with a stronger one.
- The quote for decorating the bar is £520. This will be done from 8<sup>th</sup> -10<sup>th</sup> June

#### BOOKINGS

- The High Intensity training class has been discontinued.
- The VHMC are disappointed with the time that the Community Council have taken to clear the debris from the bonfire.

#### AOB

- Patricia Fuller attended a SALC meeting about Village Halls and playing fields and reported back to the VHMC.

### JULY COMMITTEE MEETING

#### TREASURER'S REPORT

- COIF Endowment £13,561, COIF £13,947, Bank £9,452 Cash £140, Debtors £0, Assets £9,203
- Comparison research of other village halls will be done in preparation for a review of the hiring charges.

#### MATTERS ARISING & HOUSEKEEPING BOOK

- Housekeeping and Comments books: no new entries.
- The calendar was read out.
- The autumn Garden Working Party has been set for 19<sup>th</sup> November at 9am.
- The quarterly inspection was carried out and discussed. A bag of soil will be disposed of and the grounds tidied up. The Village Hall sign is now obscured by plants. The gutters will be cleaned quarterly. A broken table will be disposed of. The kettles will be descaled.
- The monthly Fire Safety Check was carried out; no problems were found.
- A quotation will be sought for the repainting of some of the interior around the foyer.
- The firm of Edward Hyde inspected the floor. It was felt that their last treatment of the floor was inadequate. They will fix the floor shortly at no charge.
- The redecoration of the Bar has now been completed and the photos hung on the wall. A letter of thanks will be sent to Foster Jones as he did not charge for his time for framing the village photos.
- Recommendations which remain to be carried out; signage to fire escape routes to be improved - new signs have been obtained.

- Suffolk County Council have agreed to put up a Village Hall sign opposite the Church Lane entrance. The VHMC agreed to the cheaper option at a cost of £165.31. This has been paid but no sign has appeared yet.

#### MAINTENANCE

- David Hewitt will fix new kick plates to the chair cupboard.
- The disabled toilet in the changing rooms needs repairing.
- Gary Napper will be asked for a quote to paint the front hall and the arches in the main Hall.
- David Hewitt has been asked to repair the soffits once the weather has improved.
- Three quotes will be obtained for relaying paving at the rear of the Hall. An additional another 2 rows of paving have been suggested.
- A request has been made for a water powered scrubbing brush for the kitchen.
- It was agreed to install Robus LED lights in the Ladies and Gents toilets at a cost of £504.90 + VAT

#### CINEMA

- A risk assessment for placing a banner on Caley Green, advertising the cinema has been sent to the PC.
- Dates for 2016: 29 July **Eddie the Eagle**, 26 August **A Bigger Splash**, 30 September **A Walk in the Woods**, 28 October and 25 November .

#### BOOKINGS

- Webpages: investigations will be made to see if VHMC members could access details of a "Private Event".
- The Pilates class has been discontinued. Other Pilates teachers will be researched.
- It was agreed that Stoke FC could continue to hire the field next year.
- Two licences have been signed.

#### AOB

- Iain Wright will co-ordinate the CC's Fireworks Night this year. Hopefully the debris from the bonfire will be cleared in December.
- The VHMC thanked I.W. for providing free of charge new tables and chairs for the Meeting Room.
- The organisers of the Village Lunch have offered to buy a small glass washer for the Bar. The VHMC gratefully agreed to buy this for November

#### NEXT MEETING

The next meeting will be **Monday 5th September** at 7.45pm in the Meeting Room.

### CLASSES & GROUPS IN THE VILLAGE HALL

- Mondays: 9.30 Acrylic Painting, 2pm Table Tennis
- Tuesdays: 10am Yoga,
- Wednesdays: 10am Dance-a-cise, 7pm Carpet Bowls
- Thursdays: 10am Fitness Class, 7pm Ballroom Dancing
- Fridays: 9.45am Baby and Toddler Group

Further details of these classes are available on the village hall bookings website via [www.naylandandwiston.net](http://www.naylandandwiston.net).



# Garden Notes

by The Old Muckspreader



Indigofera Tinctora



Indigofera Gerardiana

At the time of writing summer is here at last, and anything planted recently will begin to look droopy and need watering. Give it a good soaking after the sun has gone off it, a gallon at least, and repeat the process frequently until we get some rain.

If there is no rain for any length of time it's better to leave lawns unmown than to continue shaving them once a week, unless you try to water it, which is a waste of effort (and water). Owners of grass tennis courts, bowling greens, croquet lawns et al will disagree, but this advice is not for them.

This month's plant is something of a rarity, Indigofera. The best know species is probably I. Tinctora, found in the Tropics, and the natural source of the dye Indigo.

There are, however, a few hardy species and one of these is to be found in several gardens hereabouts. It originally came from the garden of the Old School House in Nayland, whose owner gave offshoots to several local gardeners, including the OM/S; this year a generous friend gave him several large offspring for the Church Fete plant stall.

The various standard reference works list several species, but none really seems to fit ours. It grows to at least 8 feet or so, and is now covered with its delicate pea-like flowers. A few years ago a seedling appeared here a few feet away from the min pant but is obviously a totally different species since it's only about 2 feet high with smaller but denser foliage and smaller flowers. This more or less proves that the parent plant is a hybrid.

The various progeny of the original School House parent, incidentally, have all come from suckers which come up from shallow roots growing near the parent; surprisingly none of the reference works gives this as a means of propagating, they all say take cuttings which the OM/S finds difficult to strike.

Indigoferas are perfectly hardy, are deciduous, and very useful in that they don't cast much shade and you can plant other subjects underneath.

Most annuals are now in full bloom, and many will continue if they are regularly dead-headed. This is a boring job, but really worthwhile as it does prolong the flowering life of the plant.

The OM/S rarely gives advice on vegetable growing, but recently remembered something his father used to do, namely to surround marrows or courgette plants with lawn mowings; this helps keep the soil moist and also generates a bit of heat.

## WORDSEARCH: Summer Flowering Plants

## ANAGRAMS: Perennial plants

M	K	M	U	I	N	O	G	R	A	L	E	P	J
U	S	C	I	B	A	E	H	I	I	B	P	V	Z
M	A	S	L	M	E	D	F	C	V	M	R	I	A
R	H	G	E	A	O	O	X	S	I	A	O	I	N
E	E	D	A	I	H	G	A	B	L	U	T	C	T
P	B	N	W	P	H	M	J	B	C	E	E	O	E
S	M	O	I	X	A	A	E	H	R	C	A	S	D
O	A	N	J	R	Y	N	A	B	I	A	A	C	E
E	K	W	E	B	E	H	T	A	L	D	D	R	S
T	V	I	C	M	A	N	K	H	E	T	E	I	C
S	D	D	S	A	O	D	S	O	U	M	L	N	H
O	G	A	B	M	U	L	P	I	C	S	E	U	I
E	Y	S	U	C	S	I	L	L	Y	R	A	M	A

- 1 PELNIDHUMI
- 2 MANRYHEMUCHST
- 3 KHYHOCOLL
- 4 VOGOFLEX
- 5 WOLNERFUS
- 6 DIGLOIAL
- 7 PORHIETOLE
- 8 KOHONMODS
- 9 CIVANORE
- 10 BLESNARLIC
- 11 FOLLWARREW

AGAPANTHUS  
AMARYLLIS  
CLIVIA  
CRINUM  
DIERAMA

KNIPHOFIA  
MONTBRETIA  
NERINE  
OSTEOSPERMUM  
PELARGONIUM

PLUMBAGO  
PROTEA  
TULBAGHIA  
ZANTEDESCHIA

Wordsearch words may be horizontal, vertical, or diagonal and forward or backwards

Solutions on page 46

## A YEAR OF CELEBRATION AND SADNESS

This year the village is remembering and celebrating the 50<sup>th</sup> anniversary of the Nayland with Wissington Community Council. However, there are two other anniversaries in 2016 which are worth remembering but which will not be celebrated. Twenty five years ago, 1991 was a very sad year because we lost W Norfolk & Sons and the Jane Walker Hospital, both of which had long histories, and our community has been the poorer because of their demise. They each provided a unique service to Nayland and Wiston which should be remembered.

Until the company was sold in 1991 Norfolks held the record for being the oldest independent bus company in the United Kingdom and was well known and respected in this area. The Norfolk family were originally farmers and were always involved with transport and horses, but it was William Thomas Norfolk (1847-1930) who founded W Norfolk & Sons to provide transport for goods and passengers for the Essex/Suffolk area around Nayland when he moved into his house in Mill Street in 1868. The family started a regular omnibus service and supplied horse-drawn carts and carriages of all kinds for hire as well as providing horses for the village fire engine and hearse. Over the years they acquired several premises to house all these vehicles, including the Perry yard, next to Forget-me-not, the former garage in Bear Street, the old maltings in Birch Street and Wilmot's yard in Mill Street. Their only remaining building is the old garage in Mill Street which has a very uncertain future.

Norfolks and the East Anglian Sanatorium at Wiston (later the Jane Walker Hospital) were linked when there was a demand for transport for the many visitors to the San in the early 1900s - who could have guessed then that they would both close their doors at the same time, some 90 years later?

Looking through old bus timetables is a fascinating exercise especially when we think of today's service. Unfortunately the old timetables I have are not dated but with the help of Geoff Mills's book, published in 1995, it is possible to estimate when these were current. His book includes very detailed descriptions of the many routes Norfolks provided and the competition with other bus companies.

In days gone by Norfolks ran buses to and from every village surrounding Nayland on at least one day a week to Colchester, Sudbury or Ipswich. After the Second World War car ownership increased and the gradual demise of the very rural routes and the frequency of buses on the main routes began. It must have been a very sad day and the end of an era for some when the weekly Norfolks' bus no longer passed through their village.

By the 1920s there were buses on the main route from Stoke to Colchester on 7 days a week including Sundays and some evenings. Some of these journeys started at the Wiston Fox and these continued until the 1960s. The fare then was 10d single from Stoke or 1/6d return.

Soon there were buses from Sudbury to Colchester on Market Days and Sundays via Newton, Assington, Leavenheath, Stoke, Nayland and Great Horkesley (return fare 2/6d), the route we now have today. There were two buses a week which went to Colchester via Boxted and Severalls; on Mondays there was a bus to Hadleigh via Stoke and Polstead (return fare 1/6d); on Tuesdays and Fridays a bus went to The Blue Coat Boy in Ipswich, via Thorington Street, Higham and Capel St Mary (return fare 2/9d). On Wednesdays and Saturdays a bus went



from Higham to Colchester, via Thorington Street, Boxted Mill and Langham Water Works (return 1/6d). During the 1940s a bus went to Colchester from Nayland via Little Horkesley Beehive and Great Horkesley on Tuesday and Fridays (return fare 1/8d). This last rural route was a pleasant ride to Colchester which I often enjoyed but sometimes being the only passenger I was not surprised when it was discontinued in the 1980s.

Norfolks' first motor bus travelled from Nayland to Colchester in 1915 and for bus enthusiasts Geoff Mills's book provides many illustrations and details of the vehicles that the company owned. Norfolks were always at the forefront of the advances in transport which were taking place at the beginning of the 20<sup>th</sup> century. However, despite modernisation and innovation, by the 1970s all the Sunday services and late evening buses ended due to low passenger numbers, a blow for many people, especially the younger generation.

In the early days the transport of goods formed a large part of Norfolks' business and until the 1960s they still included an advertisement on their timetables: *CARRIERS VAN delivers Parcels & Goods in Stoke, Nayland, Great Horkesley, Mile End and Colchester daily. Also Polstead and Boxford on Wednesdays and Saturdays. FURNITURE CAREFULLY REMOVED. For Cars, Coaches and Cartage phone Nayland 206 or Gt Horkesley 334.*

In 1991 the difficult decision to sell the company to Hedingham Omnibuses was made. For a few years afterwards we still saw Norfolks' yellow and green buses in the village as a reminder of the past but inevitably these eventually disappeared. Some years later the Nayland route was taken over by Chambers of Bures, another old family bus company. In 2012 Chambers was acquired by the national Go-Ahead Group which includes Hedingham buses and so we sometimes see Hedingham buses again on the Nayland route.

Nayland is more fortunate than many villages because we still have a bus service between Colchester and Sudbury, even though it is much reduced and no longer based here. As I wait at the bus stop for the next bus I sometimes imagine the sound of approaching horses and the sight of one of Norfolks' magnificent old horse buses coming into view, transporting me back in time. Fortunately there are many old photographs of these buses surviving which will ensure that Norfolks of Nayland will never be forgotten.

**Wendy Sparrow, Parish Recorder**

[Sources: *Norfolk's Nayland*, Geoff R Mills]



## NAYLAND CHURCH FETE

Blustery weather made no difference to Nayland Church Fete which proved to be another winner.

The May bank holiday event on the village playing field raised £11,900 for St James's Fabric Fund and will help pay for repairs to the church tower.

Fete committee chairman Andora Carver said: "It was a fantastic result given the challenging weather conditions and we were well supported. Our traditional formula seems to be popular with visitors and we were very pleased with the way it went. I want to thank the committee and everyone who worked so incredibly hard setting everything up."

One of the highlights was a display of 24 gleaming classic cars ranging from Austin Sevens to Rolls Royces. Making its 19<sup>th</sup> appearance at the fete, the Victory Jazz Band played a selection of traditional jazz numbers during the afternoon. Stalls were well stocked and there were sideshows for all ages from face painting to a china smash.

There were plenty of volunteers for the children's and adult sports and the tug of war. Nayland's fire appliance also attended and youngsters queued to sit behind the wheel.

A separate stall organised by members of St Mary's Church, Wiston, raised £970 for its funds.

Chris Hunt was MC for the afternoon.

\*In addition to Monday's proceeds, a pre-fete sale of items donated by villagers over a ten-week period made £704.

*Photos from top: Anne Spencer, Lesley Lumley and Terry Bannister helping with teas, Nathan and his mother cooked over 400 sausages, Catherine Maguire attempts to give Steve a soaking, Pinkle Werner were finds a good place to carry her new picture*

## CHURCH FETE THANKS

This year's fete was a great success in spite of the gusty cold north wind.

The surplus now looks to be about £12,200 thanks to further income from the hire of the Zippy Dipper. This is amongst the highest total ever achieved and is a huge credit to all those involved in the preparations, helping on the day and clearing up, etc. It is a major task and so much appreciated. Thanks also to everyone who donated items to sell at the Fete, without which it just wouldn't be the same.

An interesting, entertaining and very successful feature this year was the pre-Fete sales of items too large to bring onto the field on Fete Day. In the 10 weeks prior to the Fete, about 90 items were sold outside the Carvers' Barn, bringing in a total of £704, before the Fete even took place. These included a wood burning stove, lawn mower, bed head, corner cupboard and an Ikea sofa. Not only is this a good way to recycle unwanted items for a good cause, but it helps to publicise the Fete to. It was also fun chalking up the rising total each day. Pre-Fete sales will start again next March.

We are very grateful to all our sponsors, the Victory Jazz Band, the Nayland Fire Service, St. John Ambulance and to everyone who participated in any way. It is a long day and over 100 volunteers are involved.

A huge thank you to everyone and above all to the very hard working committee of Terry Bannister, Lorna Burgin, Annie Elston, Anna Mann, Gill Stanton, Helen Walder and Stuart Bradshaw who very efficiently handled the field arrangements on the day.

Some of these hard earned funds are already being used towards the cost of repairs to St. James church tower.

Next year the Fete is on Monday 29<sup>th</sup> May.

**Andora Carver, Chairman Fete Committee**





## HISTORY OF ST JAMES' CHURCH

An appreciative audience were treated to a presentation by Mr Clive Payne on the history of Nayland Church. Clive is an authority on Suffolk churches and certainly gave much food for thought as to the history of the church. It was a typical summer evening but this didn't 'dampen' the enthusiasm of Clive or those from far and near who came. A very enjoyable and informative evening.



## OPEN GARDENS

Although the number of visitors was down on previous years those who came to Nayland's open gardens afternoon on June 12 were able to tour sixteen gardens of all sizes. Organised by Nayland with Wissington Conservation Society, the event made about £1,500 profit which will probably go towards the survey of Court Knoll.

Secretary Andora Carver said: "Luckily we avoided the rain and everyone who came enjoyed strolling round the village. There were some really nice visitors including some who used to live in Nayland and it was a very happy day. We also had a fantastic lot of cakes made by volunteers for our teas served in the village hall."



## SCHOOL FETE

Parents, grandparents and other villagers joined Nayland Primary School pupils for their annual summer fete on June 25.

Organised by the Home School Association, the event raised just over £1,790 for school funds.

HSA chairman Drina May said: "Despite the rain shower midway through it was another very successful fete.

"The children enjoyed riding ponies and playing Human Football and the animal section was a huge success. Pupils were able to handle snakes and lizards and also to stroke rabbits and guinea pigs.

A big thank you to our sponsors Chewton Rose for displaying their boards."

Other attractions included face painting, a bouncy castle, barbecue, cream teas and numerous stalls, some devised by Year Five class.

Woodland Corner, Nayland's pre-school facility, also took part.







# CHURCH SERVICES: AUGUST & SEPTEMBER

Nayland, Wiston, Leavenheath, Stoke by Nayland & Polstead

<i>Date</i>	<i>Time</i>	<i>Venue</i>	<i>Service</i>	<i>Priest / Leader</i>	<i>Time</i>	<i>Venue</i>	<i>Service</i>	<i>Priest / Leader</i>
31 <sup>st</sup> July	11.00am	Hadleigh	Deanery					
7 <sup>th</sup> August <i>Trinity 11</i>	8.00am	Stoke	HC 2	Revd John Fowler	11.00am	Polstead	HC 2	Revd Mark Woodrow
	9.30am	Nayland	HC 1	Revd Mark Woodrow	6.30pm	Stoke	Evensong	AS edgwick/J Smith
	10.00am	Leavenheath	First Sunday	Revd Valri Armstrong	6.30pm	Wiston	Evensong	David Pryor
14 <sup>th</sup> August <i>Trinity 12</i>	9.30am	Leavenheath	HC 2	Revd Mark Woodrow	11.00am	Stoke	HC 2	Revd John Fowler
	9.30am	Nayland	Café Church	Congregation	11.00am	Wiston	MS	Derek Johns
	11.00am	Polstead	MW	Congregation	6.30pm	Nayland	Evensong	David Pryor
21 <sup>st</sup> August <i>Trinity 13</i>	9.30am	Leavenheath	MP	David Rowe	11.00am	Stoke	MP	David Rowe
	9.30am	Nayland	HC 1	Revd Mark Woodrow	11.00am	Wiston	HC 1 tr	Revd Mark Woodrow
	11.00am	Polstead	HC 1	Revd Valri Armstrong	6.30pm	Leavenheath	Ev Praise	Revd Valri Armstrong
28 <sup>th</sup> August <i>Trinity 14</i>	8.00am	Nayland	HC 2	Revd John Fowler				
	10.30am	Wiston	SP Benefice	Revd Mark Woodrow / Derek Johns				
4 <sup>th</sup> September <i>Trinity 15</i>	8.00am	Stoke	HC 2	tba	11.00am	Polstead	HC 2	tba
	9.30am	Nayland	HC 1	tba	6.30pm	Stoke	Evensong	tba
	10.00am	Leavenheath	First Sunday	tba	6.30pm	Wiston	Evensong	tba
11 <sup>th</sup> September <i>Trinity 16</i>	9.30am	Leavenheath	HC 1	tba	11.00am	Stoke	HC 2	tba
	9.30am	Nayland	Café Church	tba	11.00am	Wiston	MS	tba
	11.00am	Polstead	MW	tba	6.30pm	Nayland	Evensong	tba
18 <sup>th</sup> September <i>Trinity 17</i>	9.30am	Leavenheath	MP	tba	11.00am	Stoke	MP	tba
	9.30am	Nayland	HC 1	tba	11.00am	Wiston	HC 1	tba
	11.00am	Polstead	HC 1	tba	6.30pm	Leavenheath	Ev Praise	tba
25 <sup>th</sup> September	10.30am	Stoke	Benefice Service 'Celebration of Creation'					
2 <sup>nd</sup> October <i>Trinity 19</i>	8.00am	Stoke	HC 2	tba	11.00am	Polstead	HC 2	tba
	9.30am	Nayland	HC 1	tba	6.30pm	Stoke	Evensong	tba
	10.00am	Leavenheath	First Sunday	tba	6.30pm	Wiston	Evensong	tba

Key: FS : Family Service, FC : Family Communion, HC 1 / 2 : Holy Communion 1 or 2 , PC : Parish Communion, MP : Morning Prayer, MW : Morning Worship, MS : Morning Service, EP : Evening Prayer, Ev Praise : Evening Praise, CC Café Church, B : Baptism, SP Benefice : Songs of Praise Benefice *Worship leaders shown may be subject to change.*

## Weekday Services and Groups

Bible Study 18 Laburnum Way (*Rita Dibble 262580*): Mondays 11am 1st & 15th August, 5th & 19th September, 3rd, 17th & 31st October  
 Parkers Way Communion: Tuesdays 10.15am 16th August, 20th September & 18th October (*3<sup>rd</sup> Tuesday of month*)  
 Parkers Way Prayer & Praise Service: Wednesdays 3pm 3rd August, 7th September & 5th October (*1<sup>st</sup> Wednesday of month*)  
 Nayland House Holy Communion: Every Wednesday 10.45am  
 Messy Church Sundays 4pm-6pm: (*no meeting in Aug*) 25th September at St Mary's Church, Stoke by Nayland (*usually last Sunday of month*)

## Other Dates for your Diary

Friday 23rd Sept **Harvest Supper** in Nayland Village Hall 7pm for 7.30pm [*see page 11*]  
 Sunday 2nd October **Wiston Harvest Festival** at 5.30pm at St Mary's  
 Sunday 9th October **Nayland Harvest Festival** at 9.30am at St James'

## Weekday Prayer

Tuesday  
 Morning Prayer 8.30 am Leavenheath

## WISTON CHURCH PORCH BOOKS

A selection of second-hand books -  
 autobiographies, cookery, children's, fiction, and non-fiction -  
 are on sale in St Mary's porch at either 50p or £1.



*Dear All,*

By the time that you will be reading this, I will have been Licensed and Installed as your new Priest in Charge a role which I am both excited and, if I am honest, a little apprehensive about taking up. So I am incredibly grateful to all those who have made my move relatively painless.

I suspect that you might like to know a bit more about me, well the basics are that I am a 'Suffolk Lad', born in Ipswich. I'm 44 years old and live with my cat, Greebo, (although it is likely that my younger brother, Ben, may also be moving into the Vicarage with me in the next few months). I love Indian and Asian food, and enjoy the books of Sir Terry Pratchett, and I love watching films, having an eclectic taste with everything from Sci-Fi to Bollywood! Before ordination I worked in the Insurance Industry first as a Lloyd's Broker and latterly as a Commercial Underwriter and Offshoring/Change Consultant.

I have a real love of travel, and was fortunate that my previous job meant that I was able to spend a fair amount of time living and working in India, and this has inevitably had an effect on my faith life - there is something very humbling to worship alongside Christians who when praying "give us this day our daily bread", are genuinely and fervently praying for God to provide for them - something we in the 'affluent West' have long since taken for granted.

During my curacy I was encouraged to lead groups to both the Holy Land and to India, and this is something which I very much hope to continue here (*although I must apologise that my next tour to North India in February 2017 is already sold out!*). So if you have ever wanted to travel to India or the Holy Land do let me know. I have found that travel is frequently about taking yourself beyond what is familiar, forcing you to reassess preconceptions, and in doing so reminding yourself that God is, and always has been, present in the whole of his creation, in every race and nation.

The Psalmist got it right I think when they wrote, "...Where can I go from your spirit? Or where can I flee from your presence? If I ascend to heaven, you are there; if I make my bed in Sheol, you are there. If I take the wings of the morning and settle at the farthest limits of the sea, even there your hand shall lead me, and your right hand shall hold me fast." (Psalm 139:7-10)

How comforting it is to know, that wherever we are, we are watched over by our creator - it makes embracing change and new challenges just that little bit easier.

With every blessing

**Mark, The Revd. Mark Woodrow**

## Church News

### PRIEST IN CHARGE

As announced in previous issues, the **Revd Mark Woodrow** has been appointed by the Bishop to be the next Priest in Charge of Stoke by Nayland with Leavenheath and Polstead and Nayland with Wissington.

Mark's licensing service took place on Thursday 21st July at St Mary's Stoke at 7.30pm (just after the CT went to print so it will be included next issue).



### Christian Aid Week: 15-21 May

Many thanks to all those who delivered and collected the Christian Aid envelopes this year and grateful thanks to you too for donating. It was a great help to us that you deposited your envelopes into the collecting box in the Post Office.

The total of the amount collected throughout Nayland and Wiston was £705 - thank you to all who contributed and collected.

*Nicola Thorogood, Local Organiser*

### HISTORY BOOK

#### *Nayland: A Bird's Eye View*

A collection of articles written by the Parish Recorder over the past ten years for the Nayland with Wissington Community Times. The articles are about people and events from Nayland's past, historic buildings and much more.

Available at the Post Office, the Village Stores,  
Forget-me-not and 17 Court Street, Nayland

Price £7.00

### CHURCH CONTACT DETAILS ON PAGE 47

the **Revd Mark Woodrow** has  
been appointed as Priest in Charge  
The Vicarage  
Bear Street, Nayland CO6 4LA  
01206 262150  
revdmarkwoodrow@gmail.com  
**www.suffolkbenefice.org**

### FROM THE REGISTERS



#### FUNERALS

Martin Pankiewicz  
Stephen Fullbrook

#### BAPTISMS

Gracie Marie Crisell (Wiston)

#### MARRIAGES

Thomas Cowell and Jemma Rix  
Thomas Woodward and  
Georgina Cave



## STOKE-BY-NAYLAND WEA

presents a series of 9 Lectures starting on Thursday 29th September 2016 in Stoke-by-Nayland Village Hall at 7.30 pm. This is a 9 week topical illustrated course exploring **Shakespeare's** insights into how "one may smile, and smile, and be a villain", a scheming 'Machiavel', "bloody, bawdy" and eternally fascinating to audiences.

What makes and motivates a Shakespearian villain? What unleashes violence and cruelty in the plays? Ambition and political intrigue – sibling rivalry – jealousy – obsession and the impulse to revenge: all these issues will be explored

through lecture, discussion and video clips of scenes from the plays. What have Shakespeare's psychological insights still to say to our own age?

*Ron Marks has taught English Literature for over 50 years now, in Essex comprehensive and grammar schools and abroad and for the WEA for the last ten years. In 2010 he gained an M.A. in Shakespeare and Theatre from the Shakespeare Institute in Stratford-upon-Avon.*

**Fees: Adult £48 (payable after the first session). Try the first session (free).**

For further information please contact Sue Whiteley.

Phone: 01787 210945 or email: whiteleysa@hotmail.co.uk

## NAYLAND WITH WISSINGTON PUBLIC RIGHTS OF WAY

### Footpath Warden's Annual Report – May 2016

The public rights of way network in the parish continues to be freely available and generally easy to use. During the last year public footpaths across arable land were adequately reinstated, and the upgrowth of natural vegetation on other rights of way was cleared by Suffolk County Council when necessary. On occasions during the Summer some permissive paths became a little overgrown but all remained passable. The permissive path to Stoke by Nayland was regularly mown and continues to be a well-used and welcome addition to the local path network. Very few reports of problems have been received by the Parish Council in the last year which hopefully means that walkers are finding our paths in an acceptable condition.

**Footpath 1:** In October 2015 Essex County Council installed new sets of steps on both sides of Horkesley Lock footbridge. The old steps had fallen into disrepair which had resulted in the closure of the bridge and the paths over it for nearly 11 months, much to the frustration of local walkers and also of visitors to the area. However the new steps are a great improvement and many walkers believe they were worth waiting for as their design has made them much easier to use than the previous steps, and their timber treads have been finished to help to reduce slipperiness.

**Footpath 4:** in February 2016 Suffolk County Council responded very quickly when the bridge behind the Scout Hut became unsafe to use due to the rotting of some of the timber decking.

Within a matter of days all the decking of the bridge was completely replaced with new timbers.

There is much evidence that our public rights of way network, the permissive paths, and the Open Access land in the parish are enjoyed by many people living in Nayland and Wiston. Regular use is the best way to keep paths from becoming overgrown, and it helps to show people less familiar with the network where they are allowed to walk.

To fully benefit from this may I remind walkers to keep to the legal line of public footpaths and not to wander onto adjacent land. Most public footpaths have a legal width of between 1 and 1.5 metres.

Not everyone is aware that it is trespass against the owner of the land if walkers, or their dogs, stray beyond the legal line of any path.

With this in mind please note that FP28 runs along the top of the river bank immediately next to the Stour between the A134 and the weir and not at the bottom of the bank or in the strip of wild flower meadow next to it. To help to protect the wild flowers and other wildlife please walk on the top of bank.

I would also like to remind dogowners not only to clear up after their dogs, but when they have done so to use the bins provided to dispose of the bags. If there are no bins nearby please hang on to the bags until you reach one and do not dispose of the bags at the side of a path, or throw them in a hedge or ditch.

**Sally Bartrum, Footpath Warden**

## Feedback from James Finch - Your Stour Valley County Councillor

### DEVOLUTION UPDATE FOR NORFOLK AND SUFFOLK

All councils and both Local Enterprise Partnership (LEP) Boards debated the Deal at Full Council meetings during the last week of June. Suffolk County Council had their debate on 30<sup>th</sup> June. **All Suffolk Councils voted in favour.** Four District Councils in Norfolk voted against. Devolution is still moving forward and it will be up to the Secretary of State to decide what impact the Norfolk Councils will have on the deal.

The next step is that formal consultation on the proposed powers (Governance) of the Mayor and Combined Authority is now being carried out during **July** and **August**. All the associated documents, the online survey and hard copy booklet and questionnaire is available at [www.eastangliadevo.co.uk](http://www.eastangliadevo.co.uk). The site offers information about the Norfolk/Suffolk proposal as well as providing people with information on plans across the wider East Anglia area. Along with Suffolk County Council each borough and district council will raise awareness of the consultation via their website. We ask that Parish Councils encourage awareness of this consultation.

The outcome of the consultation will be submitted to the government in early September, with a further meeting of the full council to be held by the end of October to consider giving consent to the establishment of a Mayoral Combined Authority for the two counties. The details of the consultation questions are still being drafted by Council Leaders and Government.

The highlights of the Deal which Councils voted on are:

- A single pot of £25m a year of new money for the next 30 years (£750m) to support economic growth, development of

local infrastructure and jobs. 40% of the 'single pot' will be revenue, which can support capital borrowing

- £100m, over five years, of new money to support the building of new homes across Norfolk and Suffolk. Recognising the housing market conditions in Norwich and Ipswich, Government will also provide the Combined Authority with an additional £30m over five years, split equally for Norwich City and Ipswich Borough, to meet its housing needs
- A guaranteed £225m transport budget for the next four years
- Control of an existing c£20m a year Adult skills funding to ensure the training offer matches the needs of local businesses and the local labour market
- Control of an existing c£2m Apprenticeship Grant for Employers (AGE grant) to enable funding to better meet the needs of local Norfolk and Suffolk employers
- Greater control over who delivers transport services in Norfolk and Suffolk, and how they are delivered, rather than it being imposed on us by Central Government

Councils will need to agree the powers of the Mayors and combined authorities before the end of **October**.

Before the end of **November** views from public consultation are reported to the Secretary of State for him to consider before creating combined authorities and putting in place arrangements for mayoral elections in May 2017.

**James Finch, Suffolk County Councillor, Stour Valley Division**

*Assington, Boxford, Bures St Mary, Edwardstone, Groton, Leavenheath, Lindsey, Little Cornard, Mildenhall, Nayland with Wissington, Newton, and Stoke by Nayland*

Tel 01206 263649 Mobile 07545 423796

## Nayland Farmers' Market

Saturday August 13<sup>th</sup>  
Saturday September 10<sup>th</sup>  
9.30am – 1pm

Nayland Village Hall

**Come along & support your local farmers' market where you will find a wonderful selection of some of the region's best local producers including locally grown vegetables, freshly baked pies, bread and cakes, local apple juice & lots more....**

Further info from Justine Paul on 07704 627973

[www.suffolkmarketevents.co.uk](http://www.suffolkmarketevents.co.uk)

[justine@suffolkmarketevents.co.uk](mailto:justine@suffolkmarketevents.co.uk)



## A.S. Ironing Services

All your ironing needs  
Occasional or weekly  
Free collection and delivery  
Fully insured  
Established 2004

**Tel: 01787 228036** after 4pm  
or **Mob: 07790 344090**  
Annette Southernwood

**WHEELERS**  
Wine Cellar

**NOW OPEN**

Shop open  
Wednesday to Saturday  
**10am - 6pm**

Come and visit our specialist wine cellar

Telephone: 01206 713560 | [www.wheelerswine.co.uk](http://www.wheelerswine.co.uk)  
Birchwood Farm, Dedham, Essex CO7 6HX

**FunDancing**  
Shimmy, Shake, Wiggle & Giggle  
and Dance Fitness Fun

So Much More Than a Dance Class  
No partners required  
Any age & ability  
All are very welcome

**"Strictly" style Dance-a-cise  
Classes**  
Nayland Village Hall  
every Wednesday morning  
spaces are limited - to reserve yours

**Call Janet on  
07506 350 455**

classes also held in:  
- Capel St Mary  
- East Bergholt  
- Hadleigh  
- Nayland  
- Stratford St Mary

janet@fundancing.co.uk  
www.fundancing.co.uk

Twitter: FunDancing  
Facebook: FunDancing Suffolk

## Jane Walker, Independent Safari Consultant

Photographic, walking, bird-watching, horse-riding. Bookings ATOL / AITO bonded.



Farthing Hall, Nayland with Wissington  
[woodbridgesafaris.co.uk](http://woodbridgesafaris.co.uk) / [horsebacksafaris.co.uk](http://horsebacksafaris.co.uk)  
01206 262352, [janew@safariconsultantuk.com](mailto:janew@safariconsultantuk.com)



## KENNY'S SESAW NEWS



Our Open Day will be over when you read this and if you visited us, you will know more about it than me at time of writing. Instead I'll tell you about a naughty resident – no, it's not me!

Last month Storm, the sheep, lived up to his name when his brothers were being sheared. As his turn came, our woolly wriggler smashed out of the pen and stormed off in disgust. Despite his superior air when they came in that night, his triumph was short lived and he is now devoid of his thick coat, just like his siblings. The story

continues as we plan to follow one of the fleeces on its journey from field to finish. Watch this space!

We were delighted to find we raised £537 at our £1 Sale last month. The Volunteers enjoyed a warm at St. Luke's Church Hall in Tiptree and look forward to holding another fundraising event there in the future.

As August is holiday time please check the website or ansaphone before you visit in case we are closed, or leave a message. Right now, it's time to follow Mum as she checks all the animals awaiting homes. I'm sure they all look forward to a chat with me, **Kenny (the Boss) Chihuahua**

**Suffolk & Essex Small Animal Welfare**, Stoke Road,  
Leavenheath, CO6 4PP (Reg. Charity No.1124029)

Tel: 01787 210888 [www.sesaw.co.uk](http://www.sesaw.co.uk)

Opening times vary, please phone first or check website

## Old Joes Golf Club

**Are you looking for somewhere fun, relaxed and affordable to come and learn or practise golf?**

Here at Old Joes we have some amazing facilities available to all levels of golfer whether you are just starting out to the player looking for more intensive practice.

Our facilities include

- A 10 bay floodlit driving range
- Practise putting and chipping green with two practice bunkers
- A recently installed pro shop home to Nike Golf
- A custom fitting suite with state of the art launch monitor system
- Café with hot drinks available all year
- As well as our friendly, knowledgeable staff who are able to answer almost all of your golf queries

Golf Tuition is available please ask at the pro shop or give us a call for more details

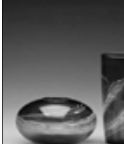
**Old Joes Golf Club**, Joes Road, Cornard Tye,  
Great Cornard, Sudbury, CO10 0QB

**Tel: 01787 374807**

**Email: [info@patrickcollinsgolf.com](mailto:info@patrickcollinsgolf.com)**  
**[www.oldjoesgolfingrange.co.uk](http://www.oldjoesgolfingrange.co.uk)**

## WistonGallery

Modern Art & Contemporary Design for You & Your Home



Contemporary art and designer hand crafted products including jewellery, hand blown glass, ceramics, hand woven and screen printed textiles, designer mid-century modern furniture, printed cards, gift wrap, complimentary accessories and gifts for you & your home



Open Tuesday - Saturday  
10am - 5pm

[www.wistongallery.co.uk](http://www.wistongallery.co.uk)

Tel: 01206 262840

e: [hello@wistongallery.co.uk](mailto:hello@wistongallery.co.uk)

Nags Corner  
Wiston Road  
Nayland CO6 4LT

## Theatricool in Nayland




Weekday classes from September 12th 2016  
Term-time Mondays at Church Hall, Bear Street

**Tinycool Dance and Drama:** fun classes for accompanied tots aged 2-4 years. 2.10 - 3.10pm

**After school drama club:** great fun, games and activities for ages 4-8 years. 3.30 - 4.30pm



[www.theatricool.co.uk](http://www.theatricool.co.uk) 07736 713909  
[sally@theatricool.co.uk](mailto:sally@theatricool.co.uk)





## ANCHOR INN

NAYLAND

### Fish & Fizz Fridays

A complimentary glass of Prosecco with main courses from the Catch of the Day menu.  
Fridays from 6pm.





## THE ANCHOR BEER FESTIVAL

12th - 14th August

### CASK ALES & CIDER

LIVE MUSIC  
SMOKEHOUSE BBQ  
FAMILY FUN

26, Court Street, Nayland CO6 4JL • 01206 262313  
[www.anchornayland.co.uk](http://www.anchornayland.co.uk)

## COMPUTER TROUBLE ? CALL US NOW!

# 01787 321177    01206 587047

### THE I.T. SOLUTION hub!

We are a friendly computer repair company in Nayland Road Bures. You are more than welcome to visit us or we can visit you. We offer

Same day service with NO call out fee. Advice is always free! We can help with pretty much anything from desktop and laptop repairs, spyware/virus removal, computer and laptop upgrades, computer clean ups, remote support and monitoring.

**10% OFF WHEN YOU QUOTE THIS ADVERT**

[theitsolutionhub.co.uk](http://theitsolutionhub.co.uk)  
[info@theitsolutionhub.co.uk](mailto:info@theitsolutionhub.co.uk)  
 01787 321177  
 01206 587047



**VIRUS REMOVAL**



**NEW COMPUTERS**



**UPGRADES**



**BACK UPS & DATA RECOVERY**



**LAPTOP REPAIR**



**PC REPAIR**



**MONTHLY SUPPORT**



**PRINTERS**



**NETWORKING**

## MARY - ANNE MORRISON

MILLINERY



**INDEPENDENT MILLINER**  
 Providing a ready-made and bespoke service



01206 262391 | 07850 571879

[www.mamorrison.co.uk](http://www.mamorrison.co.uk)

[hats@mamorrison.co.uk](mailto:hats@mamorrison.co.uk)

## Matthew Douglas

*Forward Thinking* Independent Financial Advice

**"The returns we have had from the investments have been way above our expectations"**

Mr & Mrs McMillan

**New Model Adviser**

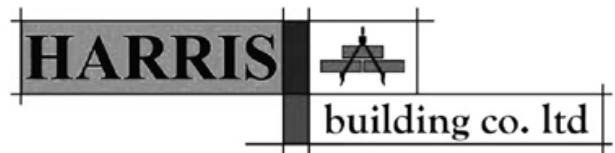
**TOP 100**

2014

To talk with one of our fully qualified staff about the range of products and services we offer, or to book an appointment to meet us in person call us on 01206 265904

Matthew Douglas Ltd, 4 Church Mews, High Street, Nayland, Suffolk CO6 4JF.  
 Matthew Douglas Ltd is authorised and regulated by the Financial Conduct Authority (226918)





We are a local building company with many years experience working on new and period country houses and cottages.

.....

For new build, conversions, maintenance, repair and joinery, for design and construction and for planning and listed building applications

.....

Telephone us on  
Nayland (01206) 263632

Or email  
[info@harrisbuilding.net](mailto:info@harrisbuilding.net)  
and you will find us at  
[www.harrisbuilding.net](http://www.harrisbuilding.net)

**BOYDENS**  
*Built on service and trust*

*A house with many doors*  
...whatever your property needs, we can help

Branches: Braintree, Clacton-on-Sea, Colchester,  
Frinton-on-Sea, Kelvedon, Sudbury

**boydens.co.uk**

Member No. G033

**MAKE IT A GOOD MOVE**

**ASK US FOR ADVICE ON MOVING**

- UK door to door
- Storage services
- Commercial archive storage
- European door to door
- Commercial office moves
- Packing materials included

**Good Move Removals & Storage**  
Unit 1, Holly Lodge, Holly Lane, Great Horkesley, Colchester CO6 4AW

**Colchester 01206 272780**  
**Sudbury 01787 378515**  
**Ipswich 01473 288110**

Email [guy@goodmove.org.uk](mailto:guy@goodmove.org.uk) Website [www.goodmove.org.uk](http://www.goodmove.org.uk)

**WHITTLES**  
CHARTERED ACCOUNTANTS

**Count on us to help you with your tax returns**

Business advisory, tax, audit and accounting services for companies, charities, trusts and individuals

The Old Exchange, 64 West Stockwell St, Colchester, Essex CO1 1HE  
Telephone: **01206 762200**

15 High Street, West Mersea CO5 8QA  
Telephone: **01206 385049**

[www.whittles.co.uk](http://www.whittles.co.uk)

## SMALL ADVERT COLUMN

Nayland and Wiston residents may place free adverts for items valued at under £50. Items £50 and over incur a charge of £5.

### FOR SALE:

**WROUGHT IRON GATES**, one 78" high x 30" wide £75 ono, one 36" x 36" £30 ono, Nayland 01206 262807

### ROMAN CATHOLIC CHURCH

Nayland and Wiston are part of the Hadleigh Parish  
Details are: Catholic Church of Our Lady and St John,  
20 The Croft, Sudbury CO10 1HW  
St Joseph's, Long Bessels, Hadleigh IP7 5DB  
**Father Peter Brett 01473 372703**  
[www.sudburywithhadleigh.net](http://www.sudburywithhadleigh.net)

## TO ADVERTISE CONTACT:

Lorraine Brooks 262807 [Lorraine.nayland@btinternet.com](mailto:Lorraine.nayland@btinternet.com)

### FREE:

#### BAGS OF SHREDDED PAPER

Available from Matthew Douglas, 4 Church Mews (opposite Post Office) between 9-5, or telephone 265904.

### WANTED:

**WANTED CHIPBOARD FURNITURE** any condition will collect. 01787 211975

**POSTAGE STAMPS** for East Anglian Air Ambulance. Please leave them in box in the Post Office.

**UNWANTED BICYCLES** for Re-cycle Bicycles to Africa, [www.re-cycle.org](http://www.re-cycle.org). Contact Iris Sebba 262632 or take them to the Re-Cycle Depot: Unit 8 The Grove Estate, Colchester Road, Wormingford CO6 3AJ Tel: 01206 617 865

**BATTERY RECYCLING** – box in the Post Office.

## Hunnaball of Colchester

Family Funeral Service



York House, 41 Mersea Road  
Colchester, CO2 7QT

01206 760049

[www.hunnaball.co.uk](http://www.hunnaball.co.uk)

## Personalised Playing Cards

**Spingold**  
Design & Print



### Ideal for:

- ♠ Special Events
- ♥ Corporate Gifts
- ♣ Birthday Presents
- ♦ Promotional Material
- ♠ Wedding Favours/Gifts



### Personalised Backs

**1** custom image on the card backs, with standard playing card faces.

### Personalised Fronts & Backs

**54** different images on the faces of the cards, plus a back image.

Number of Packs	Single Sided Personalisation	Double Sided Personalisation
1 Pack (per pack)	£18.00	£33.00
2 Packs (per pack)	£13.20	£20.40
5 Packs (per pack)	£9.00	£10.80

**Please enquire for details on larger quantities, orders of 100+ packs can have a bespoke printed box too!**

[www.spingold.co.uk](http://www.spingold.co.uk)

**01206 262751**

Spingold Design & Print Ltd.  
The Studio | Harpers Hill | Nayland  
Colchester | Essex | CO6 4NT



# WORDSEARCH

M	K	M	U	I	N	O	G	R	A	L	E	P	J
U	S	C	I	B	A	E	H	I	I	B	P	V	Z
M	A	S	L	M	E	D	F	C	V	M	R	I	A
R	H	G	E	A	O	O	X	S	I	A	O	I	N
E	E	D	A	I	H	G	A	B	L	U	T	C	T
P	B	N	W	P	H	M	J	B	C	E	E	O	E
S	M	O	I	X	A	A	E	H	R	C	A	S	D
O	A	N	J	R	Y	N	A	B	I	A	A	C	E
E	K	W	E	B	E	H	T	A	L	D	D	R	S
T	V	I	C	M	A	N	K	H	E	T	E	I	C
S	D	D	S	A	O	D	S	O	U	M	L	N	H
O	G	A	B	M	U	L	P	I	C	S	E	U	I
E	Y	S	U	C	S	I	L	L	Y	R	A	M	A

## ANAGRAM SOLUTION

1 Delphinium, 2 Chrysanthemum, 3 Hollyhock, 4 Foxglove, 5 Sunflower, 6 Gladioli, 7 Heliotrope, 8 Veronica, 9 Cranesbill, 11 Wallflower



**CHEAPER  
HEATING OIL  
& COAL**

*Together We Save on*  
***horkesleybuyers.com***  
 Join us and start saving on your fuel

## SCHOOL TERM DATES 2016

Summer term ends: Friday 22 July  
 Autumn term begins: Monday 5 September  
 Autumn half term: 24 – 28 October

## ST. JAMES' CHURCH HALL HIRE CHARGES

**Monday – Friday** (Hourly Rates) £5.00  
**MINIMUM CHARGE** (2 hours) £10.00

**Weekends** (Hourly Rates) £6.00  
**MINIMUM CHARGE** (2 hours) £12.00

During Winter: Heating Vouchers @ £1 each

Bookings: online at [www.naylandandwiston.net](http://www.naylandandwiston.net)  
 or Anna Boon 262780 [annaboone@btinternet.com](mailto:annaboone@btinternet.com)  
 Collect Key from 43 Bear Street

## NAYLAND VILLAGE HALL HIRE CHARGES (from 1 April 2014)

Inc: Hall, Stage, Kitchen & Bar - Changing Rooms: £20 extra per session  
 Licence to provide Alcohol £20 extra

Sunday – Friday Hourly Rates	Residents	Non Residents
9am – 6pm (April-Sept)	£10.00	£13.50
9am-6pm (Oct-March)	£11.00	£15.50
6pm-midnight (April-Sept)	£11.00	£15.50
6pm-midnight (Oct-March)	£12.00	£17.50

**MINIMUM HIRE: 2 HOURS RESIDENTS – 3 HOURS NON RESIDENTS**

**Saturday**

Daytime until 6pm	Hourly Rates as above	
Evening 6pm-midnight	£140.00	£210.00
All day until 6pm	£90.00	£110.00
All day until 6pm with playing field	£140.00	£160.00
Playing Field only	£50.00	£50.00
Playing Field & Changing Rooms	£70.00	£70.00
Meeting Room only (3 hour session)	£15.00	£21.00

*Reduced terms for use of the hall over a period can be negotiated with the Treasurer, Peter Mann on 262830*

Bookings: online at [www.naylandandwiston.net](http://www.naylandandwiston.net) or  
**Sara Strover 07748 953175 [naylandvillagehall@yahoo.co.uk](mailto:naylandvillagehall@yahoo.co.uk)**

## BUS TIMETABLES Service 84

(NS = Not Saturdays, Sch = Schooldays only, SHol = Saturdays & weekdays during School Holidays only)

From 30 November 2015

Sudbury – Newton Green – Assington – Leavenheath – Stoke by Nayland – Nayland – Gt Horkesley – General Hospital – Colchester

Monday to Saturday	NS	Sch	SHol		Sch	SHol	
Sudbury, Bus Station	0630	0655	0705	0915	1130	1330	1415
Great Cornard School	.....	.....	.....	.....	.....	.....	1500
Nayland, Doctors Surgery	0713	0743	0753	1003	1218	1418	1500
Colchester General Hospital	0728	0800	0808	1018	1233	1433	1518
Colchester North Station	0733	0805	0813	1023	1238	1438	1523
Colchester Stanwell Street	0740	.....	0820	1030	1245	1445	1530
Norman Way Schools	.....	0825	.....	.....	.....	.....	.....
Monday to Saturday	NS	NS Hol			Sch	SHol	
Norman Way Schools	.....	.....	.....	.....	.....	1550	.....
Colchester Stanwell Street	0725	0755	0855	1055	1255	1455	1605
Colchester North Station	0734	0803	0903	1103	1303	1503	1613
Colchester General Hospital	0740	0809	0909	1109	1309	1509	1619
Nayland, Doctors Surgery	0756	0825	0925	1125	1325	1525	1635
Great Cornard School	0840	.....	.....	.....	.....	.....	.....
Sudbury, Bus Station	0856	0910	1010	1210	1410	1610	1720

**For more information: Chambers Coaches Tel: 01787 – 375360 [www.chamberscoaches.co.uk](http://www.chamberscoaches.co.uk)**

## LOCAL INFORMATION

Mobile Library	Saturdays 4-weekly alternating between: High Street & Parkers Way. See page 21 for details
Post Office	High Street Tel: 262210 Early Closing on Wednesday
Doctors Surgery	93 Bear Street Tel: 262202 ( <i>out of hours emergency 01206-578070 or NHS 111</i> )
	Surgery hours: Mon-Fri 8am-6pm ( <i>telephone service until 6.30</i> ) <a href="http://www.northhillsurgery.co.uk">www.northhillsurgery.co.uk</a>
	Scheme Manager: Ellen Salmon, 15 Samford Close, Holbrook Tel 01473 328458
Parkers Way	Head Teacher: Raegan Delaney Tel: 262348
Primary School	Sec: Ronnie Egan 01787 210046 <a href="mailto:rontone01@sky.com">rontone01@sky.com</a> , Chair: Lindsey Regan 264019
Home School Association	Manager: Cheryl Leeks 263054 <a href="http://woodlandcornernayland.blogspot.com">http://woodlandcornernayland.blogspot.com</a>
Nayland Playgroup	Administrator: Caroline Keep 263054 e-mail: <a href="mailto:woodlandcorner@outlook.com">woodlandcorner@outlook.com</a>
Woodland Corner	Jayne Kennedy 262348
Primary School Choir	Amelia Knowland 07887 563779 Karen Tranter 07970 968882 - Fridays 9.30-11.30am Village Hall
Nayland Toddler Group	Bookings: Sara Strover 07748 953175 Caretaker: Mrs Y. Spooner 262691
Village Hall	Bookings: Anna Boon 262780 <a href="mailto:stjameschurchhall@yahoo.com">stjameschurchhall@yahoo.com</a>
Church Hall	Hon Sec. Andrew Gowen 262534
Royal British Legion	Sec: Kath Hunt 262014 – 2nd Tuesday each month Church Hall 2.30pm
Royal British Legion (Women's)	Sec: Lorna Rumsey 01787 211975 – 3rd Monday each month 7.30pm Village Hall
Womens Institute	Sec: Barbara Smith 501942 President: Mrs Eva Rolfe 263151 - 2nd Thursday each month
Over 60s Club	Sec: Mrs Eva Rolfe 263151
Bowls Club	Daphne Berry 262641 Liz Thorne 262664 - Wednesdays 2-4pm ( <i>term times</i> )
Nayland Art Club	Sec: Lorraine Brooks 262807 Chair: Trevor Smy 262022
Horticultural Society	Hon Sec Andora Carver 262970 Chair: Mike Hunter 264100
Conservation Society	Chair: Justin Dowding 262217 Membership Sec: Jill Fernandez <a href="mailto:jillyfern@gmail.com">jillyfern@gmail.com</a>
Village Players	Chair: Rob Swan 07954 334548 <a href="mailto:rob.swan@tb9.uk">rob.swan@tb9.uk</a>
Nayland Choir	Will Hitchcock 263169 - <a href="mailto:info@transitionnayland.co.uk">info@transitionnayland.co.uk</a> - <a href="http://www.transitionnayland.co.uk">www.transitionnayland.co.uk</a>
Transition Nayland	Karen Elliott 263233 <a href="mailto:kazelli@btinternet.com">kazelli@btinternet.com</a>
First Response	Chair: Alan Edwards 262800 <a href="mailto:alan@edwards-online.net">alan@edwards-online.net</a>
Friends of St. James Church	Sec: Caroline Ross-Stewart 263701 <a href="mailto:wistonfriends@gmail.com">wistonfriends@gmail.com</a> Ch: Bill Stirling 262397 <a href="mailto:billstirling@hotmail.com">billstirling@hotmail.com</a>
Friends of Wiston Church	Father Peter Brett 01473 372703 <a href="http://www.sudburywithhadleigh.net">www.sudburywithhadleigh.net</a>
Roman Catholic Church	Tel: 01787 227233 <a href="http://www.chamberscoaches.co.uk">www.chamberscoaches.co.uk</a>
Chambers Buses	PC 1455 Matt Paisley Tel: 101 ( <i>non-emergency</i> ) number
Local Police	<i>Babergh East SNT</i> email: <a href="mailto:babergheast.snt@suffolk.pnn.police.uk">babergheast.snt@suffolk.pnn.police.uk</a>
Police Safer Neighbourhood Team	Tel: 01473 822801 (Main Switchboard) Corks Lane, Hadleigh, IP7 6SJ <a href="http://www.babergh.gov.uk">www.babergh.gov.uk</a>
Babergh District Council	Melanie Barrett <a href="mailto:melanie.barrett@babergh.gov.uk">melanie.barrett@babergh.gov.uk</a> 01787 211126
District Councillor	James Finch <a href="mailto:James.Finch@suffolk.gov.uk">James.Finch@suffolk.gov.uk</a> 263649 Rose Cottage, 5 Fen Street CO6 4HT
Suffolk County Councillor	<a href="mailto:james.cartlidge.mp@parliament.uk">james.cartlidge.mp@parliament.uk</a> 0207 219 4875 House of Commons, London SW1A 0AA
James Cartlidge MP	

PARISH COUNCIL	COMMUNITY COUNCIL	VILLAGE HALL COMMITTEE
<b>Clerk:</b> Debbie Hattrell 01787 378649 <a href="mailto:pc@naylandwithwissington.suffolk.gov.uk">pc@naylandwithwissington.suffolk.gov.uk</a> 5 Churchill Drive, Sudbury CO10 1NZ <b>Chairman</b> Mary George <b>Vice Chairman</b> - <b>Councillors:</b> Russell Badrick, Gerald Battye, Martyn Booth, Kathleen Cannings, Patricia Fuller, Ian Harris, Graham Walker. <b>Parish Recorder</b> Wendy Sparrow <b>Tree Warden</b> Terry Bannister <b>Footpath Warden</b> Sally Bartrum <i>Meetings: 7.30pm second Wednesday of month in the Village Hall Committee Room</i> <i>Minutes: PC notice board in High Street</i>	<b>Chairman</b> Neil Barbrook 263619 <b>Secretary</b> Lorraine Brooks <b>Treasurer</b> Maggie Ryan <b>President</b> Ken Willingale <b>Vice-President</b> Bryan Smith <b>Vice-Chairman</b> Colin Ramsell <b>Executive:</b> Tricia Hall, Julie Clark, <b>Individual:</b> Claire Buller, Vicki Sargent, John Parsonson, Rachel Hitchcock, Colin Moule, Iain Wright <i>Meetings: 6 July, 7 September, 31 October, 9 January, 6 March AGM 8pm Church Hall (Exec 7.30)</i>	<b>Chairman:</b> Iain Wright 263657 <b>Secretary</b> Chris Thompson <b>Treasurer</b> Peter Mann <b>Vice Chairman</b> ( <i>vacancy</i> ) <b>Bookings Sec.</b> Sara Strover  <b>Committee:</b> Nick Moriarty, Tricia Fuller, Will Hitchcock  <i>Meetings: first Monday every month (except Bank Holidays: second Monday) 7.45pm Village Hall Committee Room</i>
<b>CHURCH</b> <a href="http://www.suffolkbenefice.org">www.suffolkbenefice.org</a> <b>Priest in charge</b> ( <i>five ecclesiastical parishes</i> ) Revd Mark Woodrow 262150 <a href="mailto:revdmarkwoodrow@gmail.com">revdmarkwoodrow@gmail.com</a> The Vicarage, Bear Street CO6 4LA <b>Benefice Administrator:</b> Nicola Thorogood 262453 <a href="mailto:nicola.church@yahoo.com">nicola.church@yahoo.com</a> <b>Clergy:</b> Revd Valri Armstrong 262814 <b>Licensed Reader:</b> David Rowe <b>Reader Emeritus:</b> Ken Willingale 262531 <b>Lay Elders</b> David Pryor 262303 & Kathy Hunt 262014 <b>Bell Ringers</b> Captain: Chris Hunt 262014	<b>Organists:</b> St James: James Finch St Mary's: Catherine Johns <b>St James Choir:</b> James Finch 262993 <b>Church Wardens</b> St James: James Carver 262970 <a href="mailto:carversnayland@talktalk.net">carversnayland@talktalk.net</a> or Kathy Hunt 262014 St Mary's: Nicola Thorogood 262453 <a href="mailto:thorogood.nicola@gmail.com">thorogood.nicola@gmail.com</a> or Gerald Knox 262224 <b>Deanery Synod Reps</b> St James: James Carver 262970 Helen Schalin St Mary's: Rosemary Knox 262224, John Branfield 845107	<b>Parochial Church Council</b> <u>St James</u> Lay Chairman: John Baker, Treasurer: James Carver 262970, Sec: Michael George 07557 998325 25 Laburnum Way CO6 4LG <a href="mailto:68michaelgeorge@gmail.com">68michaelgeorge@gmail.com</a> Com: Chris Hunt & Kathy Hunt, David Pryor & Sandra Pryor, Alex Murrison, Anita George, Helen & Gustaf Schalin <b>St Mary's</b> Treasurer: Gerald Knox 262224, Secretary: John Branfield 845107 George & Fiona Storey, Suki Cohen, Derek Johns, Tibby Mimpriss

COMMUNITY WEBSITE - [www.naylandandwiston.net](http://www.naylandandwiston.net)Webmaster: Graham W Griffiths – Tel: 262132 - e-mail: [webmaster@naylandandwiston.net](mailto:webmaster@naylandandwiston.net)



## VILLAGE DIARY

<b>July</b> 29th	Village Cinema: <i>'Eddie the Eagle'</i> 8pm doors open 7.30pm Village Hall <i>page 30</i>	
<b>August</b> 6th 10th 11th 13th 15th 21st 26th	Nayland Flower Show 2-5pm Village Hall <i>page 12 , 14 &amp; 23</i> Parish Council Summer Meeting ( <i>only if urgent matters arise</i> ) 7.30pm Village Hall Committee Room <i>page 47</i> Over 60s: meeting at Parker's Way Community Centre 2.30pm <i>page 30</i> Farmers' Market: 9.30am-1pm Village Hall <i>page 41</i> Women's Institute: Afternoon Garden Tea Party <i>page 19</i> Country Music Club: <i>'Jonny &amp; Lynnette'</i> 7.30 Village Hall <i>page 13</i> Village Cinema: <i>'A Bigger Splash'</i> 8pm doors open 7.30pm Village Hall <i>page 10 &amp; 30</i>	
<b>September</b> 4th 5th 7th 7th 8th 10th 13th 14th 14th 19th 19th 23rd 25th 26th 27th 30th	HortSoc: Outing to Wrest Park & Hopley Plants Gardens <i>page 20 &amp; 23</i> Village Hall Management Committee AGM 8pm Village Hall <i>page 33 &amp; 47</i> Art Group: Autumn term begins <i>page 28</i> Community Council: meeting 8pm Church Hall ( <i>Exec 7.30</i> ) <i>page 8 &amp; 47</i> Over 60s: visit to Stonham Barns <i>page 30</i> Farmers' Market: 9.30am-1pm Village Hall <i>page 41</i> Conservation Society: visit to Columbine Hall <i>page 13 &amp; 26</i> Royal British Legion: visit to Brightlingsea <i>page 12 &amp; 22</i> Parish Council Meeting 7.30pm Village Hall Committee Room <i>page 47</i> St Mary's Wiston: Fun Ladies Tennis Tournament & Lunch 9am <i>page 13</i> Women's Institute: Jayne Lawson & Alison Bradshaw <i>Flower Arranging Demo Village Hall 7.30pm page 27</i> St James' & St Mary's Harvest Supper 7 for 7.30pm Village Hall <i>page 11 &amp; 38</i> Country Music Club: <i>'Best Of Friends'</i> 7pm for 7.30 Village Hall <i>page 13</i> Royal British Legion: meeting Anchor Inn 7.30 for 8pm <i>page 22</i> Luncheon Club for over 60s: Church Hall <i>page 3 &amp; 30</i> Village Cinema: <i>'A Walk in the Woods'</i> 8pm doors open 7.30pm Village Hall <i>page 10 &amp; 30</i>	
<b>October</b> 7th 8th 10th 17th 18th 19th 22nd 23rd 25th 26th 28th 29th	Community Council: <b>Fun Village Quiz</b> 7.30pm Nayland Village Hall <i>page 3, 8 &amp; 15</i> Woodland Corner: Cake Stall outside Kerridges, Court Street 8.30am <i>page 11</i> Conservation Society: Dr Tim Dennis <i>'Court Knoll'</i> 7.15 for 7.30pm Village Hall <i>page 13 &amp; 26</i> Women's Institute: Jaqueline Grant <i>Physiotherapy</i> 7.30pm Village Hall <i>page 27</i> Hortsoc: <i>'Highlights of Chelsea &amp; Hampton Court'</i> Simon White 7.40 for 8pm Church Hall <i>page 11 &amp; 23</i> Village Lunch: <i>The Lost City of Dunwich</i> Mark Mitchels <i>page 11 &amp; 27</i> Scottish Dancing Evening 6-9pm Village Hall Country Music Club: <i>'Kevin Barry'</i> 7pm for 7.30 Village Hall <i>page 13</i> Luncheon Club for over 60s: Church Hall <i>page 3 &amp; 30</i> Royal British Legion: visit to Sizewell Nuclear Power Station <i>page 22</i> Village Cinema: 8pm doors open 7.30pm Village Hall <i>page 10 &amp; 30</i> St James Churchyard Working Party 9am-12 noon <i>page 20</i>	
<b>Forward Planner</b>	5th November 11 November 14th November 19 November 1-3 December 3rd December	Community Council: Bonfire & Fireworks <i>page 8</i> Fundraisers: Flower Arranging Demonstration & Lunch <i>page 28</i> HortSoc & Conservation: Edward Martin <i>'The Lost Gardens of Suffolk'</i> <i>page 23</i> Village Hall garden Working Party from 9am <i>page 20</i> Village Players: Pantomime <i>'Cinderella'</i> <i>page 29</i> Community Council: Christmas Fayre <i>page 8</i>

Thank you for your contributions – if you have any ideas or suggestions please contact the Editor

**DEADLINE** (subject to space) for receipt of copy in the **OCTOBER** issue is 3pm on: **20th SEPTEMBER**

CONTACT		ADVERTISING COSTS		
The Editor: Lorraine Brooks Tel: 262807 E-mail: <a href="mailto:naylandcc@yahoo.co.uk">naylandcc@yahoo.co.uk</a> <b><a href="http://www.naylandcommunitycouncil.org.uk">www.naylandcommunitycouncil.org.uk</a></b> Copy can be posted in the Community Times Box in Nayland Post Office To ensure contributions can be accommodated in the space available it is advisable that space for promotion or large articles is reserved with the editor.		Six issues for the Price of Five – get one advert <b>FREE</b>		
		Size	Dimensions	Cost
		$\frac{1}{16}$ page portrait	6.3cm H x 4.4cm W	£5
		$\frac{1}{8}$ page landscape	6.3cm H x 9cm W	£10
		$\frac{1}{4}$ page portrait	13cm H x 9cm W	£17.50
		$\frac{1}{4}$ page landscape	6.2cm H x 18.4cm W	£17.50

All monies raised from the Community Times go to good causes within the community. The Editor and Community Council may not be held responsible for the accuracy of articles or any other claims made by any advertiser in the Community Times.

The Editor and Community Council reserves the right to alter, shorten or refuse any items submitted for publication.

The Community Times is produced and distributed by the **Nayland-with-Wissington Community Council**

Registered Charity No.304926

The Community Times can also be viewed / downloaded from: **[www.naylandcommunitycouncil.org.uk](http://www.naylandcommunitycouncil.org.uk)**