



# NAYLAND<sup>WITH</sup>WISSINGTON COMMUNITY TIMES

YOUR LOCAL MAGAZINE FOR NEWS AND VIEWS



## NAYLAND POST OFFICE

The Community Council were delighted to hear, at its recent meeting that the Post Office will be remaining open for the foreseeable future as the postmistress, Patsie Ford, now has the help of Sylvia Bond working full-time and Kathy Hunt will be working alongside her in the shop on Fridays.

Residents have expressed their pleasure and relief at the news; they had been very concerned how they could access the services provided if it had closed.

Patsie said she is pleased that, with the help of the community, this has been possible but stressed their ongoing support of the Post Office is very important.

The Post Office has immense value to our community and to neighbouring parishes. It provides a service far beyond the sale of stamps, vehicle tax discs and cash withdrawals; it is invaluable in its support of village groups and activities, it collects and distributes information and provides a meeting place for a chat... it is a hub of our community and in turn something we must continue to treasure!

## CALENDAR PHOTOGRAPHIC COMPETITION



Many thanks to all who entered this year's calendar competition and helped provide an very colourful and interesting display for visitors on 4th May. *Full details of the competition can be found on pages 30 & 31.*

Now that summer is here, don't forget to keep your cameras to hand to capture scenes for next year's competition.

**NAYLAND WITH WISSINGTON PARISH COUNCIL**  
**Would YOU be interested in becoming a Co-opted Councillor?**

See page 10

**JUNE 2015**

**No: 155**

### SPECIAL INTEREST

Nayland Open Gardens

School Summer Fete

Charity Bingo Night

HortSoc Garden Party

Nayland Flower Show

Test Pit Dig Update

Village Players: Auditions

Wiston Tennis Tournament

RBL Outing: Bletchley Park

HortSoc Outing: Hatfield House

New Nayland History Book

### THIS ISSUE

Village Players: *Dead Ringer*

Street Fayre 2016

Over 60s Luncheon Club

Country Music Club

### REGULARS

Community Council News

Parish Council Notes

Village Hall Meetings

Society News

Church Services

Garden Notes

Village History

### PLUS

Dates for your Diary

Local Information

Contact Details

*(on back pages)*

View the CT in colour on: [www.naylandandwiston.net](http://www.naylandandwiston.net) or [www.naylandcommunitycouncil.org.uk](http://www.naylandcommunitycouncil.org.uk)

# NAYLAND WITH WISSINGTON PARISH COUNCIL

## Notes on Meeting: 8th April 2015

(Minutes available on PC notice board in High Street or [www.naylandandwiston.net](http://www.naylandandwiston.net) after the next meeting)

### PLANNING

There were no current applications to be considered.

Permission had been granted for the upper 2m section of lattice mast, to replace 2 antennas with 3 and replace 1 cabinet at Hilltop Farm, Harpers Hill - B/14/01039/FUL/JP.

Permission had been granted for a single storey side extension in between house and garage at 30 Newlands Lane - B/15/00074/FHA/AT.

### HIGHWAYS

Between meetings members had reviewed the signage in the village and all agreed that some signage should be considered for removal. This includes the road narrow signs near the war memorial just past the White Hart. This does not seem necessary and affects the appearance of the grade I listed wall and memorial seat. Members would also like to seek views from County Highways on the necessity to have a 30 mph sign at Anchor bridge in such close proximity to the advisory 20 mph.

A report had been received of concrete dumped on the nature reserve. It was agreed to report to the District Council in the first instance. The Chairman explained the verbal request for a bench seat on the top of Gravel Hill. Members were happy for matters to proceed with the identification of a potential location for approval by County Highways. The Chairman will progress further and once a suitable location is found will provide details to the Clerk for the enquiry to County Highways.

It was noted that an enquiry was made to the District Council on whether the entrance to the footpath at the end of the Recreation Ground and next to the Burial Ground would be a suitable location to empty a dog bin. It was agreed for the Clerk to keep the resident informed of progress – A further request has been made for a feed/drink station to be set up in the village to support the ultra marathon in the summer.

### STREET LIGHTING

It was reported that unit 84 on Bear Street opposite Parkers Way was not going out at night. The progress report from the County Councillor in relation to our upgrade work was formally noted and it was agreed to check the work is completed as

agreed. It was noted that payment of the power and maintenance costs is being withheld currently until the County Council credit power savings.

### FOOTPATHS

The Footpath Warden, Sally Bartrum, continues to chase for a resolution to the damaged bridges.

### ALLOTMENTS

The Annual Meeting with the Allotment Holders and the Parish Council was scheduled for 15<sup>th</sup> April in the Committee Room of the Village Hall. Mrs Knox advised she would not be standing for the Election, however, was happy to show the Allotment judge around again this year.

### VILLAGE HALL

The drains have been cleared and will need to be monitored after heavy rainfall. Discussion with Transition Nayland regarding a new boiler for the Village Hall is on-going and needs to go to Committee. It was noted that a new representative from the Parish Council would need to be appointed to attend the Village Hall Committee Meetings. A gardening session at the Village Hall was scheduled for the coming Saturday.

### COMMUNITY AWARD

The Chairman confirmed that she attended the Babergh Community Achievement Awards Evening where very deserving recipients from the village were recognised.

### ANNUAL PARISH ASSEMBLY

The Parish Assembly will take place on 27<sup>th</sup> April in the Village Hall. Inspector Danny Cooper will represent the Police. Simon Amstutz, the guest speaker will start.

### BURIAL GROUND

The Chairman agreed to include the review of the Burial fees at the first meeting of the new Council.

Before closing the Chairman thanked all members for all their support during the last term.

## NAYLAND LITTER VOLUNTEERS

Nayland Litter Volunteers are pleased to report that the litter situation around the village is much improved following publicity of the problem.

Evidence of discarded dog poo bags and general litter has decreased significantly since we urged people to use the bins provided and walkers take a bag (or two) and clear up when out and about.

Thank you very much for helping to improve our local environment and please keep it up!

## APPEAL FOR RETURN OF HISTORIC STONE

When walking our footpaths do you ever think about why they were first formed? I have walked daily Kingsland Lane and wondered about the generations before us. In early April, a 15" round stone, covered in ancient lichens was stolen from its home. Too heavy for one person to lift. Situated 20ft in from Cawley Road, it would have been visible only to walkers, riders and cyclists. Was it taken for profit? Was it taken to make a garden feature? What a selfish and greedy person we have in our neighbourhood. Likely to be a member of the Leavenheath and Nayland community, why not replace this ancient stone for us all to enjoy?

## NAYLAND WITH WISSINGTON PARISH COUNCIL

### Annual Parish Assembly: 27th April

Unfortunately a report on the Parish Assembly was not available. The minutes will be available to view on the Parish Council notice board in the High Street and on [www.naylandandwiston.net](http://www.naylandandwiston.net)

## Are the reports on Parish Council meetings of interest to you?

You may be unaware that traditionally the reports on PC meetings have been an independent record of discussions and not produced by the Parish Council.

### Could YOU help ?

In order for them to continue a volunteer to share this task (on every other month) of attending the meeting and writing the report for the Community Times. The meetings are held on the second Wednesday of each month at 7.30pm.

If you can help please contact Lorraine Brooks on [Lorraine.nayland@btinternet.com](mailto:Lorraine.nayland@btinternet.com) or 262807

# NAYLAND WITH WISSINGTON PARISH COUNCIL

## Report on the Annual Meeting: 13th May 2015

(Minutes available on PC notice board in High Street or [www.naylandandwiston.net](http://www.naylandandwiston.net) after the next meeting)

### ELECTION OF PARISH COUNCILLORS

Following the Parish Council elections, Mary George was re-elected as Chair with Gerry Battye, Tricia Fuller, Ian Harris and Graham Walker continuing as councillors. Through the Community Times (see page 10), other local magazines and via leafleting, the PC will invite applications for four new Parish Councillors to be co-opted. Interested persons could observe a meeting in June and their applications should be in by 7 July.

### POLICE REPORT

No crimes were reported in the parish since the last meeting.

### PLANNING

Councillors had no objections to an application for the erection of a single storey extension to link an existing detached annexe, plus internal and external alterations at **Old Maltings Farmhouse, Bures Road** or at **43 Bear Street** for alterations to existing flat roof extensions to the barn, replace doors and windows and to replace the metal garage door with wooden doors.

Councillors agreed to consider two new planning applications in Nayland before the next PC meeting. They are: erection of single-storey side extension, conversion of loft into additional living accommodation and two dormer windows at **Perry Farmhouse** and erection of single storey front extension and one and a half storey side extension plus window and door opening alterations at **24 Stoke Road**.

### RECREATION AND OPEN SPACES

Decomposing garden waste has been cleared from the Mill Stream near the bridge by the Environment Agency (EA). They tested for oxygen levels as they were concerned about a possible threat to river life. The PC will incorporate evidence from the EA into a letter addressed to south side Bear Street residents, requesting them not to dump garden waste into the Mill Stream.

Mary George volunteered to replant the Horse trough.

### HIGHWAYS

The Conservation Society is in support of a reduction of street sign 'clutter' in Nayland.

Mary George reported several incidents of large HGVs trying to go up Gravel Hill, mounting pavements and even reversing into Mill Street. In one incident, a double-decker was forced to reverse up Gravel Hill. Cars have backed up Stoke Road and also mounted pavements to avoid the HGVs. Residents are encouraged to report traffic incidents directly to Suffolk Highways via [www.suffolk.gov.uk/environment-and-transport/highways/traffic-management-and-road-safety/lorry-management](http://www.suffolk.gov.uk/environment-and-transport/highways/traffic-management-and-road-safety/lorry-management)

Following the Annual Parish Assembly, a resident is in discussion with the Police about implementing *Speedwatch* which allows the public to get involved with monitoring traffic speed through their neighbourhood.

Cawley Road in Wiston is being resurfaced.

### STREET LIGHTING

Councillors plan to complain to Suffolk County Council as the new street lighting in Nayland is far from complete and the deadline has passed. They will call for an urgent site meeting.

### FOOTPATHS

Merles Bridge is scheduled to be repaired by the end of May.

A resident had complained of an aggressive horse on a section of footpath 4 (leading north from the Cemetery) where there is no separation from livestock. Suffolk CC plan no action as the aggressive behaviour is 'intermittent'. Tricia Fuller felt this was an unsatisfactory response; councillors advised that walkers can complain directly to Suffolk CC online in order to accrue evidence.

### ALLOTMENTS

At a recent meeting with councillors, allotment holders felt that clearing hedges and ditches to facilitate parking was inadequate. Tree roots needed to be removed to widen access. Councillors considered various surfaces that improve parking while allowing grass to grow through. Allotment holders will be asked not to drive their cars on to the allotment field from November to February.

Councillors discussed the allotment field (beyond the allotments) and how it might be an even greater amenity, mentioning the possibility of it becoming a Conservation area. There was concern that some dog walkers still did not clear up after their dogs and the field was becoming contaminated.

Councillors agreed that the allotment field required a considered management plan and a councillors' online comments form will be set up.

Allotment holders will be sent details of the Best Kept Allotment competition 2015 shortly.

### BURIAL GROUND

The Five Year Plan has just been completed with the Jane Walker memorial plaque renovations the only outstanding task. Graham Walker reminded the council that the rows of crosses in the cemetery mark the graves of some of the patients from the hospital. It was agreed that the Jane Walker memorial plaque would be an agenda item for a summer meeting.

### MATTERS ARISING FROM ANNUAL PARISH ASSEMBLY

The PC will respond to the Dedham Vale Management Consultation through the Chair. Councillors were invited to add their own individual comments.

### RECYCLING WASTE

Residents were not happy that there was no toxic paint or glass collection, that Babergh charges for collecting garden rubbish and that kitchen waste collection was dismissed as 'uneconomic';

### BICYCLE RACK

Installing a bicycle rack near the bus stop at the entrance to Parker's Way. Councillors discussed the suitability of the land near the surgery. The Parish Clerk pointed out that having a bike rack more centrally would be attractive to tourists.

### Nayland Over 60s

## LUNCHEON CLUB

A Monthly Lunch for Senior Citizens  
Church Hall ~ 12.00 noon for 12.30 pm ~ £3

**26 May - 30 June**

**21 July Summer : Tea Party**

(No lunch in August)

Come along and join the friendly atmosphere for a chat with friends, old and new.

If you would like to join us for lunch just come along. If transport down to the Church Hall is difficult telephone Olga Alexander on 263923 to see if we can collect you.

## VILLAGE NOTICE BOARDS

When using notice boards around the village to promote your Nayland with Wissington community event please be considerate to other users by using drawing pins to put your posters up and **NOT staple guns**.

Some notice boards clearly request that staple guns are not used as they damage the boards and make use difficult for others.



## Office Matters

Comprehensive  
**WORDPROCESSING**  
Service

(Inhouse cover also provided)

Please contact

**Margarette**  
on

**01473 822860** or

**07863 560945**

to discuss your particular  
requirement

[margarette@officematters.org](mailto:margarette@officematters.org)

**Professional and Confidential**

## INDOOR TENNIS COURT

at Newtons Farm,  
Wissington, Nr Nayland

"PAY AND PLAY"

NO MEMBERSHIP FEE  
PARKING & TOILET FACILITIES

Further

details:

**01206**

**262453**

[www.indoortenniscourt.co.uk](http://www.indoortenniscourt.co.uk)



## Learn to drive

with your local driving school



**Rob Austin D.O.T.A.D.I.**

Fully qualified

12 years experience

Dual controlled car

Learn at your own pace

1st 2 hour lesson £25

£19 per hour there after

For more information or to book  
lessons call Rob on:

**01206 262106**

or: **07946 085338**

## TOWN PRINTS

**General  
Picture Framing**

Also a selection of  
antique engravings  
of Colchester and District.

Foster Jones  
Longwood Cottage,  
Fen Street, Nayland,  
CO6 4HT

**Tel: 01206 262483**

## D S Clarke

*Building Services*

For professional - high quality work

General building work including:-

Extensions - Renovations - Brickwork

Landscaping - Roofing- Kitchens - Tiling

Plastering - Carpentry - Decorating etc

For a free, no obligation estimate,  
contact David Clarke on:

**Tel: 01787 227943**

**Mb: 07867 851 137**

[dsclarkebuilding@yahoo.co.uk](mailto:dsclarkebuilding@yahoo.co.uk)

7 Claypits Ave, Bures, CO8 5DA

## Lower Dairy Farm

Traditionally Reared

**BEEF**

Free Range Pork

Wild Venison

Preserves & Chutneys



Lower Dairy Farm Shop

Water Lane, Little Horkesley

CO6 4JS Tel: 01206 262314

[www.lowerdairyfarm.co.uk](http://www.lowerdairyfarm.co.uk)

## Fix-A-Lock

Locksmith - available 24/7

- Emergency LOCKSMITH -
- Wooden and UPVC doors
- All window & door repairs -
- handles/hinges/mechanisms/etc
- Replacement sealed units
- UPVC window & door specialist
- UPVC window & door installations
- CRB checked



**Ted Blanchette**

**07836 551 032**

[tedblanchette@tiscali.co.uk](mailto:tedblanchette@tiscali.co.uk)

## Stour Valley Landscapes

*Gardening*

*Fencing*

*Landscaping*

*Tree & Hedge work*

*Handyman jobs*

*For a local, friendly &  
reliable service:*

**Tel: 01206 263629**

**Mob: 07801 430751**

## TRG PEST CONTROL

Rabbits, Moles, Rats,  
Mice, Wasps, etc

Efficient and  
Economical Service

For Further  
information call

**Terry Gowing**

**Tel: 01206 322776**

**Mobile: 07990 954192**

Colchester's Premier Roofing Specialist

Established  
over 20  
years

## EXTERIOR CARE

FLAT ROOFING - TILING & SLATING  
New Roofs & Repairs - Chimney Work  
- Leadwork

An Established Local Family Business  
QUALITY WORKMANSHIP GUARANTEED  
FREE ESTIMATES & ADVICE

For Quality, Reliability & Service Please Call

**01206 272453**

MOBILE 07970 016234

5 Brook Cottages, Boxted, Colchester CO4 5TW

## Karen Bromley Swim School

BABIES  
TODDLERS  
TEENS  
ADULTS  
SMALL GROUPS  
POOLS IN YOUR AREA  
FULLY QUALIFIED TEACHER  
STA & ASA



TAKING BOOKINGS NOW  
**07841 483515**

[kbswimschool@yahoo.co.uk](mailto:kbswimschool@yahoo.co.uk)

[KbSwimSchool.com](http://KbSwimSchool.com)

## TO ADVERTISE IN THE COMMUNITY TIMES

Contact:

Editor: Lorraine Brooks

**Tel: 262807**

E-mail:

[naylandcc@yahoo.co.uk](mailto:naylandcc@yahoo.co.uk)

## Computer Care

**"NEW" HOUSECALL REPAIR SERVICE**

**COMPUTER VIRUS REMOVED!!**

**BY V-EXTERMINATOR LTD SINCE 2003**

**NOW £45.00 WITH FIRST HOUR INCLUDED !!**

**TEL: 01787 370397**

## Evolve LANDSCAPES

Landscape design & build

- › Landscape Design
- › Construction work
- › Paving / driveways / patios / paths
- › Fencing / decking / garden walls
- › Pruning / hedge cutting
- › Tree felling / clearance
- › Regular garden maintenance



**T: 01206 263813 M: 07841 625358**

**E: [info@evolve-landscapes.co.uk](mailto:info@evolve-landscapes.co.uk)**

[www.evolve-landscapes.co.uk](http://www.evolve-landscapes.co.uk)



## JP Services

Fencing - Horticultural Woodwork - Paving  
**07970 559251** [www.jpsservices.co](http://www.jpsservices.co)

- Fencing, Rustic Structures - Rose arches, Pergolas etc
  - Sheds & greenhouses erected and repaired - bases laid
  - Raised Beds, Traditional Window Boxes & Planters
  - Hedge laying
  - Patios and Paving
  - Artificial grass installed
  - Grass cutting
  - Gardens cleared, Waste removed - EA registered waste carrier
  - NPTC chainsaw certification held
  - Oak tubs/barrels and steel drums supplied
  - And much more
- Also, Flat pack Furniture constructed



So Much More Than a Dance Class  
 No partners required  
 Any age & ability  
 All are very welcome

### "Strictly" style Dance-a-cise Classes

Nayland Village Hall

every Wednesday morning

spaces are limited - to reserve yours

**Call Janet on  
 07506 350 455**

classes also held in:

- Capel St Mary
- East Bergholt
- Hadleigh
- Nayland
- Stratford St Mary

[janet@fundancing.co.uk](mailto:janet@fundancing.co.uk)  
[www.fundancing.co.uk](http://www.fundancing.co.uk)



## Country Cars Private Hire

Personal & Professional Service Polstead Based

Local & Long  
 Distance

Airports - Theatres  
 Weddings - Hospitals



Contact Dave Howard

**01206 262196 07767 076976**

## Mike Freeman's Window Cleaning Residential and Commercial



For an honest, fully  
 insured, experienced  
 window cleaning  
 service, please call  
**Mike: 01206 503814  
 or 07590 396781**

Facia's, Gutters, Frames, Cladding - all undertaken

32 Maidenburgh Street, Colchester CO1 1UB

## DAWN DALE

### BEAUTY & RELAXATION THERAPY

AUSSER HOUSE • POLSTEAD STREET • STOKE BY NAYLAND

OFFERING: MANICURE INC GELCOLOR BY OPI,  
 PEDICURE, WAXING, AROMATHERAPY,  
 BODY TREATMENTS, FACIALS,  
 EYE TREATMENTS, MASSAGE  
 LADIES ONLY

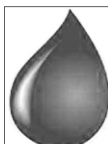
OPEN: TUESDAY-SATURDAY 9AM-5.30PM

GIFT VOUCHERS AVAILABLE

PLEASE PHONE DAWN:

**01206 262 118**

[dawncdale@gmail.com](mailto:dawncdale@gmail.com)



## STOURVALLEY

HEATING & DOMESTIC SERVICES LTD

- OIL CENTRALHEATING INSTALLATION & MAINTENANCE
- COMMISSIONING
- HOT WATER STORAGE INSTALLATION
- UNDERFLOOR HEATING INSTALLATION
- WATER SOFTENER INSTALLATION
- FULL BATHROOM DESIGN & INSTALLATION
- DOMESTIC PLUMBING SERVICES

Local experienced established registered installer  
 For advice or a free estimate call MARK WARREN  
 on Tel 01473 312047 or Mobile 07968 586613



## SHORT COURSES at ASSINGTON MILL

Beekeeping for beginners  
 Jam, jellies & juice making  
 Birds of Prey, working with  
 Hen keeping in your garden  
 Chain-sawing for amateurs  
 Clay ovens - how to make one  
 Bricklaying for amateurs  
 Plumbing basics for amateurs  
 Ballroom dancing for novices  
 Wooden spoon carving  
 Sheep for Smallholders

Bread-making  
 Foraging for food  
 Wild game butchery  
 Dog psychology  
 Tortoise ownership  
 Natural Skin Care  
 Fruit tree pruning  
 Stained glass  
 Silver clay jewellery  
 Willow plant supports  
 Cyder-making

Fly Fishing  
 Scything  
 Mosaic  
 Badgers  
 Upholstery  
 Storytelling  
 Hedgelaying  
 Felt-making  
 Signwriting  
 Pig-keeping  
 Calligraphy

Contact Anne Holden: **01787 229955**

[info@assingtonmill.com](mailto:info@assingtonmill.com)

[www.assingtonmill.com](http://www.assingtonmill.com)

## MAKING YOUR WILL

Retired solicitor Trevor Dodwell is local and  
 Through his business he writes  
 Wills and Lasting Powers of Attorney.  
 He offers a home visit service, thoughtful and friendly  
 client care, with career-long advisory experience.  
 The fees are surprisingly affordable.

Please call **01206 263420**

or email me at: [trevordodwell@aol.com](mailto:trevordodwell@aol.com)

**[www.thewillbusiness.com](http://www.thewillbusiness.com)**

## COMMUNITY COUNCIL REPORT

AGM: 6th May 2015

Chairman: Neil Barbrook

[www.naylandcommunitycouncil.org.uk](http://www.naylandcommunitycouncil.org.uk)

Neil Barbrook welcomed members to the meeting.

**Executive Committee:** Colin Moule was welcomed to the CC Exec. Bryan was thanked for his time as Treasurer and Iain for stepping forward to fill the post. There have been delays in completing the bank mandate and paperwork for the changeover. Lorraine will now collect monies for CT advertising and calendar sponsorship and the Calendar Team for calendar sales. We would like to remind all village groups that the CC is there to support them; their reciprocation by having representatives at our meeting is much appreciated. Individuals are also most welcome to come along to our meetings.

**Fundraising Activities:** A Grand Draw would be organised for the Street Fayre in 2016 but it was decided not to include one at the Christmas Fayre. Ideas for fundraising are always welcome.

**Nayland Post Office:** Members were delighted to hear that our Post Office will be remaining open; Patsie now has the help of Sylvia Bond working full-time and Kathy Hunt will cover Friday afternoons.

**Village Hall:** Neil thanked those who helped tidy the village hall gardens on 11th April.

**CC History & Website:** Lorraine Brooks said she is continuing to collect information relating to the history of the CC and would be grateful for any details, memorabilia or photos which could be copied or photographed.

The CC's website, [www.naylandcommunitycouncil.org.uk](http://www.naylandcommunitycouncil.org.uk) is up to date. Please get in the habit of taking photos of CC activities, events, grant outcomes, etc for inclusion.

**CC Asset List:** Claire had been in contact with the School regarding the Father Christmas costume. The CC had replaced the lost beard this year and agreed they would store the costume, which they paid for some 10 years ago, for use by village groups. It was felt the ideal place to store the costume was with the Village players costumes.

Iain said there are some CC items in the outside store of the Village Hall. We have unused Father Christmas presents. Please let Lorraine know of other items.

### Grants & Donations:

• **Village Stiles:** Neil Barbrook said the project for replacement of stiles on the footpath northwards from Bear Street was completed without a financial contribution from the CC. Consideration is being given to replacing another stile, located after the footbridge turning right towards Gravel Hill.

• **Village Hall:** The grant of £1,000 to their Endowment Fund for the long term future of the Hall has been paid.

• **Table Tennis Group:** Neil Barbrook gave thanks on behalf of the group for the grant of £250 for a new table tennis table.

### TREASURER'S REPORT

Iain Wright read Bryan Smith's Report:

The Community Times continues to be our largest revenue earner and already shows a profit of £1111.80. Grant payments were made to: Bowls Club £353.92, Village Hall Endowment £1,000, Table Tennis Group £250. We hold £646.67 for First Response and £185 for the Services Fund, Grants not yet paid: Conservation Soc. Book £500.

Therefore **unencumbered assets are £19,246.98**

**COMMUNITY TIMES:** Lorraine Brooks said advertising has increased, both for yearly subscriptions and single issue bookings. She expressed thanks to Jean and Roy Evans who have retired as distributors after 25 years of delivering in Laburnum Way and The Westerings and to Kathrine Spencer for joining the team. Another distributor may be needed for the central area of The Heights. A volunteer to write reports on alternate Parish Council meetings is still required; the meetings are on the second Wednesday of the month.

A new Nayland history book is available at local shops; written

by Wendy Sparrow it contains the articles she has written for the CT over the past 10 years.

**VILLAGE CALENDAR:** Lorraine Brooks thanked all those who entered the photography competition. There was a good display of photographs and it was a pleasant afternoon with visitors stopping to chat and have refreshments.

There were some very good photos entered and the calendar is now coming together; it will be available to buy at the Flower Show on 8th August. Wissington will be represented by three pages this year as the number of entries for that area were higher than previously.

Lorraine thanked the calendar team and helpers for their commitment and to Hazel Gardiner for providing refreshments.

Members were reminded to keep their cameras handy to take photos during the year. With all the attractive scenes within the parish, aspects of village life and variations in weather, seasons, etc the scope for capturing different compositions is huge.

### FORTHCOMING ACTIVITIES:

• **Picnic in the Park - Sunday 19th July:** Iain Wright is leading with Mandy Cook organising the music schedule. There will be a Pimms stall and ice creams may be available if a volunteer to lead comes forward. The Duck Race will start at 1pm then there will be music and entertainment on Webb's Meadow.

• **2015 Dates:** Quiz 2nd October, Fireworks Thursday 5th November, Christmas Fayre 6th December.

• **Street Fayre - July 2016:** Claire Buller will lead on the event. The first meeting to form a sub-committee to plan the Fayre, which will celebrate the 50th anniversary of the Community Council, will be held on 17th June, 7.30pm at 107 Bear Street - those interested in helping please attend the meeting. It is hoped all societies will participate at the event. The theme will be 1960s as the CC was founded in 1966.

### SOCIETY REPORTS

**Art Group:** Colin Ramsell said the group is at full compliment. They are planning a visit to the Munnings Gallery at Dedham on 17th June and, although nothing to do with art, out for a cream tea at Newton Green Golf Club on 15th July.

**Conservation Society:** John Partridge said Open Gardens will be on 14th June and anyone willing to open their should contact Andora Carver on 262970.

**Royal British Legion:** Alex Murrison said the outing to the Tower of London and the St George's Day Lunch at the Anchor Inn were very successful and enjoyed by all. An outing is planned to Bletchley Park is being planned - contact Andrew Gowen on 262534 if interested. Their next branch meeting is on 18th May at the Anchor Inn.

**Woodland Corner:** Tricia Hall said they were looking forward to their Barn Dance fundraiser this Saturday.

**HortSoc:** Lorraine Brooks said they have had a busy spring; a very interesting talk 'An Incitement to Early Marriage: A Social History of the Allotment' by Twigs Way, the colourful and fragrant Spring Show was successful and almost 40 members attended the AGM & Fun Quiz.

The next events are the Morning Market on 16th May, an outing to the Savill Garden and Thames cruise in June and the Summer Garden Party for members at Parkers in July.

**Village Players:** Bryan Smith thanked the enthusiastic audience for their support for their last production 'Dead Ringer'.

Their next production will be 'The Woman in White' by Constance Cox. Auditions for 4 female and 6 male roles will be on 12th and 15th July (5pm & 7.30pm respectively) at the Church Hall.

**Women's Institute:** In April, Dudley Chignall, spoke about *Beatrix Potter - her art and inspiration*. In May they have an outing to Norwich and their AGM followed by a talk with Gemma Ninnmey, a vet from the Highcliff Veterinary Practice in Hadleigh.



Wendy Sparrow is presenting part three of a *Walk Around Nayland* on 15th June. The National WI is 100 years old, and there are special celebrations being organised; in September Nayland branch will hold its own celebration and they hope the village will join them.

**Village Hall:** Iain Wright thanked the CC for the grant for the Endowment Fund. He said they have recently been replacing crockery. The kitchen will be upgraded over the next year and a hot cupboard installed.

**Book Club:** The club run by Stephanie Deering read a variety of books; 'Elizabeth is Missing' by Emma Healey is their current book. They are also planning their first outing as a group - a trip to the theatre.

**Table Tennis Group:** Neil Barbrook thanked the CC for the grant. They have a good numbers attending and three tables but have not arranged any friendly matches yet.

**DATE OF NEXT MEETING:** will be **Wednesday 1st July** in the Church Hall at 8pm (*Exec at 7.30pm*)

## The history of the Community Council,

1966 to present is being collated to  
Celebrate its 50th Anniversary

### Do you have any information that could be included?

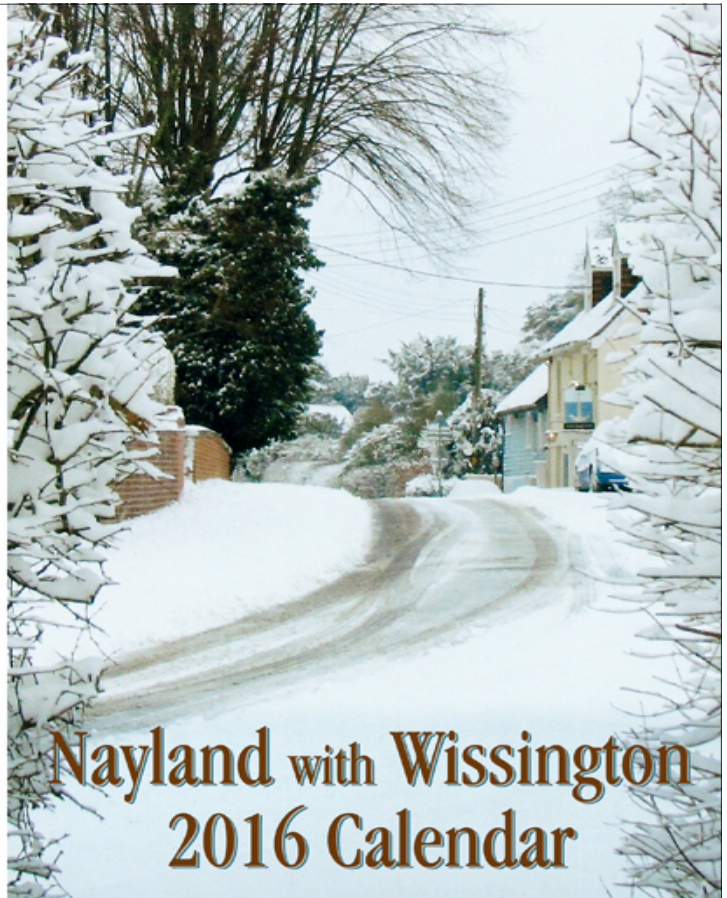
We would love to hear from you with any information, memories, or if you have any documents, photographs or souvenirs of events held, which we could copy  
Please contact Lorraine Brooks on 262807

# Nayland with Wissington 2016 Calendar

Fantastic new views of the parish  
accompanied by historic views and notes  
Still priced at just £5 !  
They make ideal gifts

Calendars will be on sale from  
8th August at the  
Nayland Flower Show  
(2pm-5pm Village Hall)

After this they will be on sale at various village events,  
the Post Office, Blue Owl, Hatten's Stores and Forget-Me-Not



## Nayland with Wissington 2016 Calendar

## CHARITY RACE NIGHT

On Saturday 21<sup>st</sup> March at Nayland Village Hall, a Race Night was held to raise funds for 'WomenVCancer Cycle Africa 2015 Challenge'.

The event was well supported and greatly enjoyed by eighty people and a tasty fish and chip supper was cooked on site by 'Smallfry' a mobile business from Bungay, which was followed by delicious ice-cream from Aldeburgh.

Gill Dutton would like to thank everyone who supported the event, purchased and named horses and the six businesses who kindly sponsored a race each: *Hadleigh Kitchens, The Travel Stop, and The Kings Head, Beaumont, Seymour Accountants, HSJ Dental, Colchester, and Mike Hatton of BFP Wealth Management of Sudbury.*

She would also like to thank Avis Printers who printed and donated stunning Race Cards!

A dozen businesses generously donated superb prizes for the prize draw and each winning horse owner was presented with a bottle of 'Bubbly'. The total amount raised on the night was an amazing £2,035.





# Nayland Street Fayre 2016

In order to celebrate the 50th anniversary of  
Nayland with Wissington Community Council a  
Street Fayre will be held in the High Street in July 2016.

We are looking for volunteers to be part of the organising committee.

If you would like to join us to help plan this exciting Street Fayre please contact  
Claire Buller at [clairejbuller@gmail.com](mailto:clairejbuller@gmail.com) or on 263344. Anyone welcome.  
The first planning meeting will be held on 17th June 7.30pm at 107 Bear street.

I look forward to hearing from all and seeing you on 17th June. #



**The Community Council's**  
**Picnic in the Park**  
**Sunday 19th July**

Webb's Meadow, next to the Village Hall - 1pm till 5pm - Free Entry

Enjoy a lazy Sunday afternoon with friends and neighbours  
See the famous Duck Race in Fen Street at 1pm  
(gather at 12.45, ducks £1 on the day)

Bring your garden chairs, rugs, picnic and drinks for lunch/tea together  
Delicious Pimms and Children's Punch available  
A wonderful variety of music and entertainment from:  
*Nayland School Choir & Drama Group*  
*Nayland Choir, members of the Village Players*  
*Gifted young singers, pianists and guitarists*

~ ~ We look forward to seeing you there ~ ~  
In the Village Hall in case of bad weather



[www.naylandcommunitycouncil.org.uk](http://www.naylandcommunitycouncil.org.uk)

## PICNIC IN THE PARK VOLUNTEERS

A few more volunteers are needed to help for a short while with various tasks, such as; clearing Mill Stream of weeds for the Duck Race in advance of the event, erecting the marquee at 10.30am on the day and clearing up afterwards.

If you can help please contact Iain Wright on 263657 or email [iain.wright@iwaltd.co.uk](mailto:iain.wright@iwaltd.co.uk)

Nayland-with-Wissington Conservation Society  
Registered Charity no 268104

# Village Players AUDITIONS



for the 19<sup>th</sup> - 21<sup>st</sup> Nov 2015 production  
**'The Woman in White'**  
by Constance Cox adapted from the  
novel by Wilkie Collins

**Acting roles for four  
female and six male  
actors of mixed ages**

Auditions will be held  
in the Church Hall,  
Bear Street, Nayland

Sunday 12<sup>th</sup> July at 5.00pm  
Wednesday 15<sup>th</sup> July at 7.30pm

All welcome on either day

Further information: Mary Moriarty 01206 262808  
[marymoriarty@btinternet.com](mailto:marymoriarty@btinternet.com)

[www.villageplayers.co.uk](http://www.villageplayers.co.uk)

# NAYLAND OPEN GARDENS

SUNDAY  
JUNE 14<sup>th</sup>

2-6 pm

Tickets from Gardens & Hall  
£5- children free

**TEAS**  
IN THE VILLAGE HALL

[www.naylandconservation.org.uk](http://www.naylandconservation.org.uk)

## Nayland with Wissington Conservation Society

Registered Charity No 268104

**Tuesday 30th June**

**Professor Jules Pretty**  
will be talking about his book

**'The Edge of Distinction:  
Travels with Enduring People  
in Vanishing Lands'**

7.40 for 8pm Nayland Village Hall

Open meeting, all are most welcome

[www.naylandconservation.org.uk](http://www.naylandconservation.org.uk)

action medical research  
for children



Nayland Village Hall

**Friday 3<sup>rd</sup> July**

**'Eyes down' 7pm-9.30pm**

Wine, Refreshments, Nibbles (free tea & coffee!)

Tickets £10 in advance\*

£12 on the door

(Includes 6 games)

**CASH PRIZES!**

\*Tickets on sale at

Nayland Post Office & Nayland Primary School

All proceeds will go towards vital research into the  
treatment of children with brain tumours.



## NAYLAND WITH WISSINGTON PARISH COUNCIL

### Do you live or work in Nayland or Wiston?

Would you like a new challenge?  
Are you concerned about the local community  
and environment?  
Do you enjoy working as part of a team?

### Would YOU be interested in becoming a Co-opted Councillor?

The recent Parish Council elections were uncontested and there are now four vacancies. Please apply by letter or email by the end of June 2015 and let us know what qualities and skills you can offer the community. Applications will be considered by Council and an appointment made in July 2015. You can find out more by speaking to a Parish Councillor or by contacting the Parish Clerk at:

[pc@naylandwithwissington.suffolk.gov.uk](mailto:pc@naylandwithwissington.suffolk.gov.uk)

CHARIS, Upsher Green, Gt. Waldingfield, SUDBURY.  
Tel: 01787 880935



Nayland & District  
Horticultural Society

# SUMMER GARDEN PARTY

**FOR MEMBERS**

**Friday 17th July**

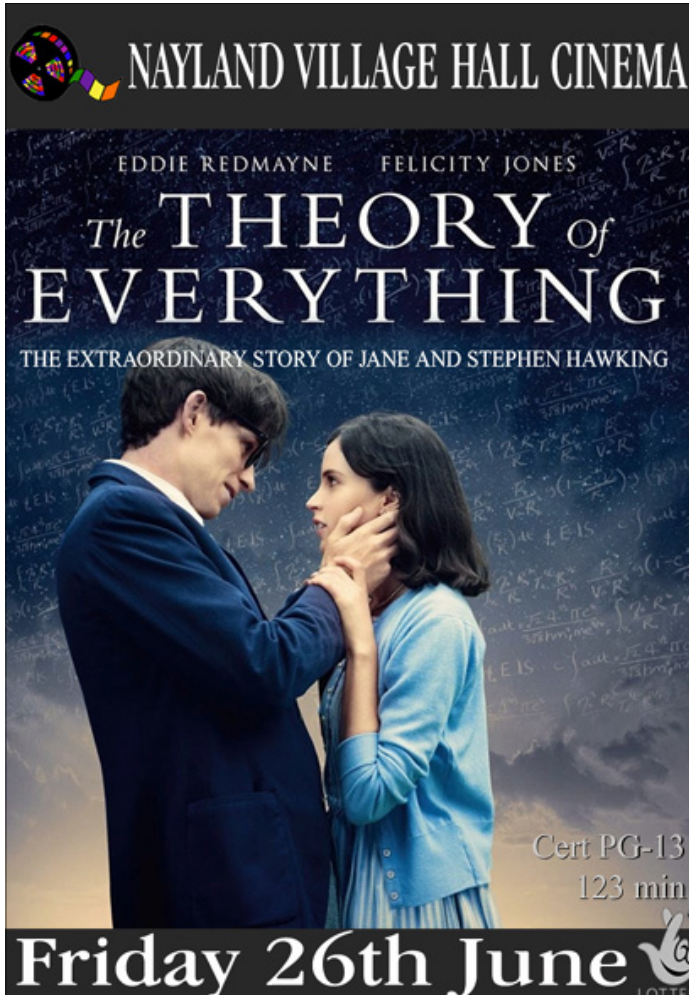
7.30pm at Parkers, Bear Street

For your free ticket please contact Lorraine  
01206 262807 or [lorraine.nayland@btinternet.com](mailto:lorraine.nayland@btinternet.com)

In case of inclement weather we need to restrict numbers  
so please book early to avoid disappointment

- Tour of the lovely gardens
- Refreshments and buffet
- Free ticket draw

[www.naylandhortsoc.org.uk](http://www.naylandhortsoc.org.uk)



**NAYLAND VILLAGE HALL CINEMA**

EDDIE REDMAYNE FELICITY JONES

## The THEORY of EVERYTHING

THE EXTRAORDINARY STORY OF JANE AND STEPHEN HAWKING

Cert PG-13  
123 min

**Friday 26th June**



**Start 8pm Bar open at 7.30pm**

Tickets £5 (inc tea/coffee and biscuits) Ice cream available  
available from the Post Office (afternoons) or on the door

JUDI DENCH MAGGIE SMITH BILL NIGHY  
DEV PATEL CELIA IMRIE PENELOPE WILTON RONALD PICKUP  
WITH DAVID STRATHAIRE AND RICHARD GERE

## THE SECOND BEST EXOTIC MARIGOLD HOTEL

Cert 13A : 122 min

**Friday 24th July**





NAYLAND PRIMARY SCHOOL HSA

# Summer Fete

Saturday 20th June 2015  
11am-1pm

**TUCK SHOP • RAFFLE • BOUNCY CASTLE  
TOMBOLA • HUMAN FOOTBALL  
JENNY'S ARK • REFRESHMENTS  
FACE PAINTING AND TATTOOS  
..... PLUS LOTS MORE TO BE ANNOUNCED**

KEEP THE DATE IN YOUR DIARY

## NEW! Greetings Card *Floods near Nayland c. 1950*



by *Sir Alfred Munnings*

Estate of Sir Alfred Munnings. All rights reserved, DACS  
2015. Photo credit: The Munnings Art Museum

**Price: 60p each & £3 for 6  
incl. envelopes**

Available from:  
*Forget Me Not, The Blue Owl  
& committee members*

[www.naylandconservation.org.uk](http://www.naylandconservation.org.uk)



# Royal British Legion

outing to

# Bletchley Park

Home of the Codebreakers

## Wednesday 15th July

Leaving Nayland Surgery at 8.30am and departing  
Bletchley at 3pm. The cost will be about  
£35 per person which will not include lunch.  
The outing is open to all.  
Please contact Andrew Gowen  
[parkersag@yahoo.co.uk](mailto:parkersag@yahoo.co.uk) or 01206 262534




# STOUR BORDER Country Music Club

Nayland Village Hall 7.30 - 10.30  
Admission, usually £4, doors open 7pm  
No bar – please bring your own drinks.  
Tea/coffee & light refreshments available

**SUNDAY 28TH JUNE**  
**'Kenny Paul'**  
*A welcome return for this solo act from Ireland*

**SUNDAY 26TH JULY**  
**'Declan Gaynor'**  
*First time here for this solo act from Ireland*

**SUNDAY 23RD AUGUST**  
**'Brian's Country'**  
*A popular return for Brian Mann from Ipswich*

**SUNDAY 27TH SEPTEMBER**  
**'Best of Friends'**  
*A welcome return for this duo, the voice of country*



*Nayland:  
A Bird's Eye View*



*Wendy Sparrow  
Parish Recorder*

**A NEW HISTORY BOOK**  
on sale now

**Nayland: A Bird's Eye View**

A collection of articles written over the past ten years for the Nayland with Wissington Community Times.

Available at the Post Office,  
the Village Stores, Forget-me-not  
and 17 Court Street, Nayland

Price £7.00



*The old Higgs Cottages*

Not a lot is known of the early history of the cottages but we know that Dan and Laura Spooner bought them in 1900. Dan was a farmer, well known for horse dealing and the breeding of fox hounds for which he won many trophies. He was also well remembered for home slaughtering and previously lived and farmed at Farthing Hall, later taking over the Anchor for a few years. The cottages were at that time divided into six dwellings, the rent ranging from 1s to 2s 6d per week. Dan also bought two adjacent cottages which were more modern and these were reconstructed to form a house called The Hollies. The 1901 census shows Dan and his wife living at The Hollies and six other families living in the adjoining cottages.

After being damaged at the end of the Second World War, The Hollies was rebuilt and then eventually demolished in the 1960s as it stood in the direct line of the new bypass. Old maps cannot always be relied on for complete accuracy and on the 1836 Tithe Map for Nayland, Higgs Cottages and The Hollies are shown as being one long terrace divided up into three properties. The cottages had no name at that time but were shown as being opposite Higgs Barn and Yard (Higgs Corner) which at that time were owned by Sir Joshua Henslow.

(Sources: Nayland Log Book)

August 2011

**BETHAN JERVOIS**

Former Nayland resident Bethan Jervois, who helped raise thousands of pounds for the parish church, has died. She was 82.

Mrs Jervois moved to Leavenheath with her husband John in 1976 after 10 years in Nayland and always maintained strong links with the village.

Over the years she made hundreds of jars of jam to sell at the so-called annual JAMborees organised by the Friends of Nayland Church.

Born and raised in Wales, she worked as a home service advisor and also briefly in advertising. For many years she ran the highly successful gift stall at Nayland Church fete and was a member of the Nayland Fundraising Committee.

Apart from her husband Mrs Jervois leaves a son, daughter and five grandchildren.

Following a private cremation a memorial service was held at St James's Church, Nayland on April 24.



*Bethan and John Jervois at the Christmas Fayre 2014*

*Nayland & District*  
**Horticultural Society**

**SUMMER FLOWER SHOW**

**Saturday 8th August**

2pm-5pm Nayland Village Hall - Admission 50p

Produce Stall, Teas, Raffle, Nayland Calendar 2016





Classes for: Vegetables, Fruit, Flowers, Flower Arranging, Cookery, Preserves, Art & Craft, Photography, plus Children's & Family's Sections - open to non-members - entries by 5th August

*Show schedules available at Nayland shops, Lorraine 262807 or [www.naylandhortsoc.org.uk](http://www.naylandhortsoc.org.uk)*



**Nayland with Wissington  
Conservation Society**  
*Registered Charity No 268104*

**Tuesday 23rd June**

**Dr Carenza Lewis**  
will review the results of the  
**Follow-Up Test Pit Dig**  
held in September 2014

**7.30pm Nayland Village Hall**  
**All are most welcome**

[www.naylandconservation.org.uk](http://www.naylandconservation.org.uk)

**Save the Date!!**

**Fun Ladies Tennis Tournament  
And Lunch**

In aid of The Friends of Wiston Church  
To be played on various courts in Wiston.

**Monday 21<sup>st</sup> September 2015**

9.00 for 9.30am start.

More details will be advertised nearer the time.

All enquiries Caroline Ross-Stewart  
[WistonFriends@gmail.com](mailto:WistonFriends@gmail.com)



*Nayland & District Horticultural Society*

Coach outing to

**Hatfield House & Gardens**

**Sunday 6th September**

Coach leaving Nayland 9am, return from Hatfield House 4.30pm. The cost will be £29 to include travel and entry to house and garden. Open to non-members. Stable yard shops and coach house restaurant.

This is a very popular venue so please book early to avoid disappointment. Please complete the booking form below and send, with your payment to:  
L Brooks, 50 Gravel Hill, Nayland CO6 4JB or  
place in the Community Times box in the Post Office.

Cheques payable to *Nayland & District Horticultural Society*.

For more information or a cash payment please ring Lorraine on 262807 or email: [lorraine.nayland@btinternet.com](mailto:lorraine.nayland@btinternet.com), or visit [www.naylandhortsoc.org.uk](http://www.naylandhortsoc.org.uk)

*Hatfield House in Hertfordshire is a grand Jacobean country house, steeped in history and home of the Cecil family for 400 years. Visitors can enjoy the peace of the West Garden with its scented garden and fountains, and view the famous knot garden adjoining the Tudor Old Palace where Elizabeth I spent much of her childhood or venture out into the deer park. Superb examples of Jacobean craftsmanship and many momentos collected over the centuries can be seen displayed throughout the house which was splendidly decorated for entertaining the Royal Court.*

**Hatfield House and Gardens Booking Form**

You will receive an acknowledgement of booking.

I would like to book ..... seat(s)

Payment attached: £.....

Name: ..... Tel: .....

Address: .....

Email: .....

Names of Guest/s: ..... Where boarding coach: Stoke Rd / Parkers Wy / Harpers Est



# HARE & HOUNDS LEAVENHEATH

traditional country freehouse with 3+ real ales  
pool table - open fire - beer garden & patio - play area

## upcoming events

**Fathers Day - "Pie and Mash"**

Sunday 21st June

Book now to secure your place and treat  
your dad to lunch

Don't forget we have a large, family friendly beer  
garden so when the sun comes out why not come  
and give it a try!

**Summer Beer Festival**

Thurs 6<sup>th</sup> - Sun 9<sup>th</sup> August

10+ real ales and ciders, BBQ food

Live Band 8th August - "Flaming Llamas"

### OPENING HOURS

tuesday, wednesday, thursday 12 - 3pm & 5 - 11pm

friday & saturday 12 - 11pm

sunday 12 - 10pm

closed all day monday

### FOOD IS AVAILABLE

tuesday - saturday 12 - 2pm & 6 - 9pm

sunday 12 - 3pm



[www.hareandhoundsleavenheath.co.uk](http://www.hareandhoundsleavenheath.co.uk)



01787 212396

# M & J REGAN

## Building Contractors

A local family company who have been trading  
in the area for over 35 years.

01206 264019

07803 604254

[m.regan3@sky.com](mailto:m.regan3@sky.com)

GARDEN DESIGN  
BORDER DESIGN  
PLANT SOURCING  
GARDEN  
OVERHAUL  
GARDEN  
GIFT VOUCHERS



Call Angela for a consultation:

01787 212264

07974 375254

**Give your garden the  
makeover it deserves!**

We are a local garden design  
company and can offer a  
complete design, construction  
and maintenance package  
or just a planting plan for a  
single border.

[WWW.ZINNIADDESIGN.CO.UK](http://WWW.ZINNIADDESIGN.CO.UK)



# Nayland House

Off Bear Street

Nayland CO6 4LA

**We offer long and  
short term care for elderly  
and dementia residents  
in our beautiful home set  
in the heart of the village**

**You are very welcome to  
visit – come and see our  
excellent facilities**

**For more information  
please telephone:  
01206 263199**

# TURNER & MAY LIMITED

*Plumbing and Heating Engineers*

[www.turnerandmaylimited.co.uk](http://www.turnerandmaylimited.co.uk)

General Plumbing  
Central Heating Installation  
Energy Efficiency Boiler Installation  
Boiler Maintenance  
Underfloor heating  
Water Softeners  
Bathroom Design & Installation  
Free Estimate

*We offer a fully comprehensive range  
of domestic plumbing and central heating services.*

*Excellent local reputation*

*Over 25 years of experience*

Tel/Fax: 01206 263392

Mobile: 07966 286603 / 07885 075031

Email: [brian@turnerandmaylimited.co.uk](mailto:brian@turnerandmaylimited.co.uk)



# N.P. & S.G. Evans Plumbing & Heating

Hill Farm, Wiston, Nayland, Colchester CO6 4NL  
npsgevens@gmail.com

**Tel: 01206 262091 Mob: 07979 535670**

For all your plumbing & heating requirements.  
Most makes of oil boiler serviced.  
Also guttering maintenance & replacement.



**Water Lane ARCHITECTS**  
An RIBA Chartered Practice

- Architectural services for new and existing buildings
- Houses, schools, commercial and development schemes
- Designs for greater sustainability — AECB member

Chris Exley, RIBA, AECB  
info@waterlanearchitects.co.uk 01206 890178  
www.waterlanearchitects.co.uk  
Water Lane, Little Horkesley 07827 414847



**Decorating, Glass & Building Centre**

Layer Road, Colchester CO2 9JY  
01206 216000  
www.kentblaxill.co.uk

@KentBlaxill find us on Facebook

Pick up a landscape catalogue in-store or download at  
www.kentblaxill.co.uk



**Paving • Fencing • Decking • Furniture**

**Nayland Dental and Cosmetic Clinic**



18 High Street, Nayland, Suffolk, CO6 4JF

**Family Dentist Teeth whitening**  
**Children welcome Hygienist**

**PRIVATE DENTISTRY AT AFFORDABLE PRICES**  
Free examination for children of school age with full paying adult

**DENPLAN AVAILABLE**  
**FREE SMILELIGN CONSULTATIONS**  
**FACIAL REJUVENATION TREATMENTS**  
**TEETH WHITENING - only £149 for June/July**

**Early Morning & Late Evening Appointments Available**  
**FREE ORAL CANCER SCREENING GIVEN WITH EXAMINATION**

Call us to book an appointment or request an information pack **01206 262262**



**Blue Owl**  
Ceramics Studio & Gift Shop

**We are open: Monday - Saturday 9.30am - 5pm**



We have a wide range of gifts and cards for all ages, including toys, scarves, jewellery, candles, home gifts and more.  
You can also come in for coffee and cake at anytime - craft activities are optional!



**www.blue-owl.co.uk**  
Tel: 01206 263350  
The Mill, Mill Street, Nayland, CO6 4HU.



## PETER MOSS & SONS

Providing all aspects of  
vehicle maintenance



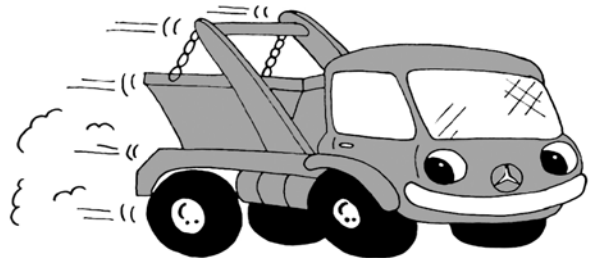
**68 Bear Street  
Nayland  
Tel: 01206 262866**

**SERVICING ■ REPAIRS**

## BUGG SKIP HIRE

**For All Your Waste  
Disposal Requirements**

- Excellent Service
- Lowest Prices
- Various Sizes to Suit Every Situation



**Tel: 01206 262605**

**[www.buggskiphire.co.uk](http://www.buggskiphire.co.uk)**

The Woodyard, Gravel Hill, Nayland, CO6 4JB



*Gladwins Farm*

*Harpers Hill*

*Nayland*

*Suffolk CO6 4NU*

*Tel: (+44) 01206 262261*

*Fax: (+44) 01206 263001*

*E-mail: [GladwinsFarm@aol.com](mailto:GladwinsFarm@aol.com)*

*[www.gladwinsfarm.co.uk](http://www.gladwinsfarm.co.uk)*

- Award-winning self-catering cottages – sleeping 2–8 people. Charming conversions of period farm buildings, some are designed to be accessible by accompanied disabled visitors, some luxury cottages with private hot tubs.
- Moving house? Longer tenancies in the Winter period can be arranged.
- Keep fit in our swimming pool – open to non-residents on a contract basis, shared and sole use times.
- Swimming lessons throughout the week. Fully air-conditioned in a lovely building. Available for childrens' parties.
- Guests have the use of the pool, sauna, hard tennis court and playground. The lake is stocked with coarse fish. Pets welcome.

*Brochure and details available from Stuart and Susie Bradshaw. 01206 262261*

*[www.gladwinsfarm.co.uk](http://www.gladwinsfarm.co.uk)*






**The Quay School of Theatre Dance**

Classes held in Sudbury  
and  
Ixworth nr Bury St. Edmunds  
Pupils accepted from 3 years to adult

**EXAMS • SHOWS  
SUMMER WORKSHOPS**

For further details please contact:  
Mrs Marie Morris A.I.S.T.D. Dip. C.D.E.  
Telephone: 01359 271057  
Mobile: 07766 290161  
email: quaydance@hotmail.co.uk  
www.quaydance.co.uk



*Ballet - Modern - Jazz  
Tap - Street - Fitsteps*

 Quay Dance

**IMPERIAL SOCIETY OF TEACHERS OF DANCING**

*Matthew Gough*  
MPTA, Btec, HND, C&G Pts 1&2

**PIANO TUNING  
PIANO SALES AND HIRE**



- PIANO TUNING,  
REPAIRS AND  
FULL RENOVATIONS
- QUALITY PIANOS  
INCLUDING YAMAHA MODELS  
FOR SALE OR MONTHLY HIRE!
- VARIOUS MONTHLY RATES  
A GREAT WAY TO TRY A QUALITY  
PIANO BEFORE YOU BUY

Frinton-on-Sea

*Established since 1988 and Fully Qualified  
Covering the Nayland area for over 25 years*

**mpgpianos.com**  
**01255 670780**



## BARNEY THE DECORATOR

### YOUR LOCAL PAINTER & DECORATOR

Quality Decorating Applied To Last!

**Fully Insured - Friendly Professional Service  
No Job too Big or Too Small**

Call Barney for your free quote: 01206 264116    07856 540664  
or email: barneyjhp@gmail.com    2 Laburnum Way, Nayland CO6 4LG

## PRINCIPLE HEATING SOLUTIONS

Proactive from conception to completion

e: daren@principleheatingsolutions.co.uk  
w: principleheatingsolutions.co.uk



**t: 07976 151595**

**oil**

**biomass**

servicing  
installation



Comfortable  
heating with wood

**Recommended Installer**

**Wood  
burners**

chips  
logs  
pellets



Registered  
Business

**Renewable Heat Incentive (RHI)  
Grants available**

Supply and installation of wood burning  
stoves and boilers

Oil boiler servicing and installation

Supply and installation of oil tanks

**Please call or email for your free  
no obligation quote**



**74 HUNGERDOWN LANE  
LAWFORD  
COLCHESTER  
ESSEX  
CO11 2LX**





# Nayland & District Horticultural Society

# CHILDREN'S & FAMILY'S CLASSES

# NAYLAND FLOWER SHOW

**Saturday 8th August**  
**2pm-5pm Nayland Village Hall**

An animal or person made from vegetables and/or fruit  
 Cardboard Creation  
 'I grew this myself'  
 Jar of named wild flowers  
 Decorated cresshead  
 Garden-on-a-plate  
 Photo: 'I took this photo myself'  
 Decorated fairy cakes



Entries in by 5 August. Children's classes are free to enter. Youngsters can also enter other classes for: Vegetables, Fruit, Flowers, Flower Arranging, Cookery, Preserves, Art, Craft & Photography  
 Show schedules available at local shops, Lorraine 262807 or [www.naylandhortsoc.org.uk](http://www.naylandhortsoc.org.uk)

## Summer Craft Fair

30 handcrafted gift stalls

**Nayland Village Hall, CO6 4JH**  
**Saturday 27<sup>th</sup> June 2015**

**10am to 4pm**

**Free Entry**

[info@simpleevents.me](mailto:info@simpleevents.me)  
[www.simpleevents.me](http://www.simpleevents.me)



A huge thank you to everyone who helped at this year's Church Fete on 25<sup>th</sup> May, especially to those who had not been involved before. It is wonderful that so many people rally round, come rain or shine, to make this such a special afternoon. The success of the Fete is dependent on what we have to sell, how many visitors turn up and the weather, which we can do nothing about. It is lovely to welcome our loyal supporters who come year after year.

Thanks also to our sponsors, Buggs Skip Hire, David Burr, Gladwins Farm, Reeman Dansie as well as to the generous providers of raffle prizes, including, The Anchor, Blue Owl, David Burr, Colchester Wine Company, The Crown and Stoke Golf Club. The Lion, Leavenheath also generously donated a sideshow prize. We are very grateful to Arthritis Research, Colchester, for taking the leftover items and books.

The Classic Cars made a spectacular display thanks to all the owners who brought along their precious vehicles. We much appreciate having the Nayland Fire Service in attendance once again. Last but not least I would like to give very special thanks to the Committee who worked extremely hard over several months to ensure everything ran smoothly on the day.

Next year's fete will be on **Monday 30<sup>th</sup> May 2016**. If you have ideas for improvements and different stalls or sideshows, please let us know.

**Andora Carver, Chairman, Fete Committee**





# Nayland with Wissington Society News



## ROYAL BRITISH LEGION

Secretary: Andrew Gowen 262534 parkersag@yahoo.co.uk Chairman: Alex Murrison 262369

We are very grateful to Roy Chapman and the staff of the Anchor for organising a memorable St George's Day lunch. Everything went very well.

There are still a few vacancies for our trip to Bletchley Park on 15<sup>th</sup> July. Contact the Secretary as soon as possible if you are interested.

We are still hoping to resolve the positioning in the Church of the two Ceramic Poppies purchased from the Tower of London display.

At our meeting on 18 May, Ken Willingale, our President, gave us an interesting talk on the Preparations for 'D' Day. We are hoping to include a talk by one of our members at all future meetings.

Our next meeting is at the Anchor Pub on 20 July and we hope members will come at 7.30pm to have a drink or two before the meeting starts at 8pm.



## NAYLAND CINEMA

Chris Thompson Secretary V.H.M.C.

On **22nd May** we showed ***The Imitation Game*** the film about the cracking of the enigma code in World War Two.

On Friday **26th June** we will be showing ***The Theory of Everything*** the film about the life of the scientist, Stephen Hawking.

On Friday **24th July** we will be showing ***The Second Best Marigold Hotel***. This film, set in India, is a sequel to the highly popular *The Best Marigold Hotel* and has a stellar cast. These films have had excellent reviews.

All films start at 8pm. We have a bar from 7.30pm and an interval for tea and coffee and ice creams. Tickets cost £5 either from the Post Office or on the door. All profits go towards the maintenance of the Village Hall.



## BOOK CLUB

Stephanie Deering 264126 slouisethorne@aol.com

Our book club has just finished reading *Elizabeth is Missing* by Emma Healey and our current book is *Summer at the Villa Rosa* by Nicky Pellegrino.

We will also be enjoying our first outing as a group - a trip to the Mercury Theatre to see *The BalletBoyz*; a contemporary dance group.



## NAYLAND AND DISTRICT WOMENS INSTITUTE

Secretary: Jeannette Finch 262993

We celebrated the 58th Birthday of our branch in March with a very enjoyable meal at the Angel in Stoke by Nayland. Our April speaker, Dudley Chignall, spoke about *Beatrix Potter - her art and inspiration*, and showed beautiful slides of the Lake District in which Jemima Puddle Duck and the Kittens kept appearing.

Many of our ladies enjoyed a coach trip to Norfolk firstly to a very good garden centre where you could have coffee or a light lunch then on to Norwich to visit the Van-Dal shoe factory where you could take a tour and see the work in progress, some of the ladies also purchased shoes.

Our AGM takes place on 18th May, with a vote on the Resolution that will go to the National AGM at the Albert Hall in June followed by a talk with Gemma Ninnmey, a vet from the Highcliff Veterinary Practice in Hadleigh.

Wendy Sparrow is presenting part three of a *Walk Around Nayland* on 15th June, please come and join us.

On 20th July the subject of Bryan Thurlow's talk will be *The Perennial Mr Potter*, who was a true man of Suffolk, complete with authentic Suffolk accent, and tales of his working life as a gardener in a big Suffolk garden where he started work in the summer of 1913 and remained working there until 1963.

The National WI is 100 years old, and there are special celebrations being organised; Buckingham Palace have invited representatives from branches to attend a Royal Garden Party and Pat Bradford will represent Nayland and Jeannette Finch is off to the Albert Hall, for the National AGM, which will be attended by the Queen, Princess Anne and the Duchess of Wessex.

In September Nayland branch will hold its own celebration and we hope the village will join us!! More detail next issue.

We meet in the Village Hall on the second Monday of the month at 7.30pm, guests are always welcome.



## NAYLAND FIRE STATION

Watch Commander Tony Gardner,  
Suffolk Fire and Rescue Service,  
Fire Station, Bear Street, Nayland

On the 22nd of January as mentioned in the Last issue I was presented with this certificate by Deputy District Commander Chris Gibbs. As I said then this was a complete surprise to me although I knew that I had completed 40 Years in the Fire Service; it has been enjoyable as well as challenging and I would like to thank all the people I have served with over the years.

Among the fires that Nayland have attended recently was a thatch fire at Langham in Essex.



## HORTICULTURAL SOCIETY

Sec: Lorraine Brooks 262807  
lorraine.nayland@btinternet.com

[www.naylandhortsoc.org.uk](http://www.naylandhortsoc.org.uk)  
Chair: Trevor Smy 262022



Trevor Smy welcomed 37 members to the **Annual General Meeting and Fun Quiz** evening on 21st April. He thanked Ken Willingale for auditing the accounts, Pat Bray for her press coverage, Andrew and Sue Gowen for hosting the summer party and the committee for their support. He expressed thanks to those who are not on the committee but offer invaluable help with various tasks during the year and those who donate plants, produce, cakes, raffle prizes for events. Last but certainly not least he thanked all our members for their support in making our activities so successful and enjoyable.

Officers re-elected were Trevor Smy (chair), Lorraine Brooks (sec), Anne Spencer, Hazel Gardiner, Colin Ramsell, Helen Gladwell, Sheila Wildish and Sylvia Bond (committee). Margaret Smy was elected as Treasurer to replace Sylvia who has stepped down from that role.

Following the fairly brief formalities members settled down to find the solutions to the fun quiz with horticulture in mind. The literary work in which Peter, Benjamin and the gang drove the gardener, Mr MacGregor, hopping mad had slipped some minds and who recorded the album *The Joshua Tree* produced quite a variety of answers! The winners were 'The Wallflowers' on 55 points followed by 'The Cabbages' on 51 points, who were just half point ahead of 'Bowhitspa'.

The **Morning Market** held on Saturday 16th May was very busy as visitors snapped up the array of bedding, vegetable and perennial plants, delicious cakes and preserves or had a flutter on the raffle. As usual there was a very happy atmosphere to relax and enjoy refreshments with friends. We are very grateful to everyone who supported the market by donating items for sale or for the raffle, helping us man the stalls or coming along on the day. This is our main fundraising event which helps generate funds for our activities.

We are hoping for good weather for our coach outing to the **Savill Garden**, which is part of the Royal Landscape, and a cruise on the River Thames in the shadow of Windsor Castle on 10th June and our annual **Summer Garden Party** on 17th July by kind invitation of Andrew and Sue Gowen.

We are now taking bookings for the coach outing on Sunday 6th September to **Hatfield House and Gardens** in Hertfordshire, see booking form on page 13. This is open to non-members and the cost is £29, for travel and entry.

Our annual **Flower Show** is fast approaching.... on **8th August** and will be preceded by the Hanging Basket competition which will be judged in situ with results revealed at the show. Schedules are available from the Post Office, Kerridge's, Blue Owl, the Village Stores, Forget Me Not, on our website or from Lorraine or Trevor.

Subjects for the **photography** so don't forget to be '**Herbaceous Border**' and '**Horsepower**', and in the children's section '**I took this photograph myself**' you don't have to get out and about with your cameras soon to capture some colourful shots. You will see new classes being introduced for: '**Non-alcoholic Country Drink**' which encompasses cordial, lemonade, ginger beer, honey drink, sparkling elderflower, etc and '**Any Other preserve**' which covers piccalilli, pickled vegetable/s, bottled fruit, etc. So we look forward to some interesting new exhibits this year.



Thinking caps on at HortSoc's AGM & Fun Quiz





## VILLAGE PLAYERS

[www.villageplayers.co.uk](http://www.villageplayers.co.uk)

Chair: Gale Scott 01206 262061

Membership: Jill Fernandez jillyfern@gmail.com

The Village Players enter a temporary lull after the much enjoyed performances of Dead Ringer and the commencement of auditions for Woman in White on 12th and 15th July. At the AGM on Wednesday 29th April Justin Dowding was elected Vice-Chairman. The membership fees have gone up this year as a result of increased costs across the board and we hope for your understanding. Whilst the Village Players are not a profit making organisation per se, we do have a lot of expenses to cover and making a loss overall is not a good plan.

We thank you, dear Nayland, for supporting us so enthusiastically at every performance and promise you many more treats in store.



## NAYLAND WITH WISSINGTON CONSERVATION SOCIETY

Hon. Secretary: Andora Carver 262970  
carversnayland@tiscali.co.uk

[www.naylandconservation.org.uk](http://www.naylandconservation.org.uk)  
Chairman: Mr J Alexander 262676

This year our annual footpath walk took on a successful new format when a group of about twenty seven members and friends (including people from Leavenheath, Little Horkesley and Wormingford) walked from Arger Fen to the Chapel Barn, Bures and then on to Bevills for a look at the gardens and tea. Thanks to Mike Hunter for organising such an enjoyable afternoon.

The following day, twenty members had a private tour of the Munnings Art Museum at Castle House, Dedham, followed by tea in the Garden Café. This too was a very informative and interesting outing arranged by Andora. One of the pictures on view was *Floods near Nayland c. 1950* which the Society has had permission to reproduce as a greetings card (*details on page 11*).

Preparations for Open Gardens on Sunday 14<sup>th</sup> June are well under way. Please contact Jill Slater (262145) with offers of cakes, help on the teas, or if you would like to open your garden.

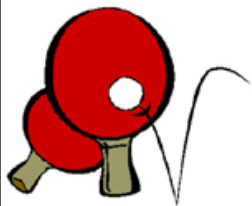
The results of the Follow-Up Nayland Test Pit Dig in September 2014 will be revealed by Dr. Carenza Lewis on Thursday 23<sup>rd</sup> June at 7.30pm in the Village Hall. All welcome. We hope she will also be returning some of the Finds.

Professor Jules Pretty will talk about his latest book *"The Edge of Extinction – Travels with Enduring People in Vanishing Lands"* at our next Open Meeting on Tuesday 30<sup>th</sup> June.

Finally, thank you to all our members who have recently renewed their annual membership, become life members and to those who have joined the Society.



*May Walk: viewing the carved effigies of the Earls of Oxford in St Stephens Chapel*



## TABLE TENNIS CLUB

Neil Barbrook 263619 or 07817 449920 nbarbrook@hotmail.com

We now have three table tennis tables thanks to a recent grant from the Nayland with Wissington Community Council, which means we can play singles and doubles in a light hearted friendly environment. Nayland Table Tennis Club meets on Monday afternoons at the Village Hall from 2pm-3.30pm.





## NAYLAND ART GROUP

Daphne Berry 262641

The Art Group continues to work a full capacity, with a trip to the Munnings Collection at Dedham using the local Community Transport Scheme bus, scheduled for Wednesday 17th June.

Vernon Lever our tutor returns to the hall on the 20th May to help us put the finishing touches to our "Hare & Sailing Barges" sketches that he left us to partially complete after his last session.

Finally our Summer Afternoon Cream Tea has come round already and as usual it will be held on the 15th July at the ever friendly Newton Green Golf Club.

*Colin Ramsell*



## OVER 60s CLUB

Secretary: Barbara Smith 501492

President: Eva Rolfe 263151

Our May meeting took the form of a look round Fillpots Nursery and a meal which was enjoyed by those attending. We meet on the second Thursday of each month, our next meeting will be on 11th June and 19th July at the Community Centre in Parkers Way at 2 30pm. The July meeting will be on 21st July when we will be joining the Nayland Over Sixties Luncheon Club for Tea at Longwood Barn.

New members are always very welcome to come along.

*Diana Whiting*



## NAYLAND LUNCHEON CLUB FOR OVER 60S

A Monthly Lunch for Senior Citizens ~ Church Hall ~ 12.00 noon for 12.30pm ~ £3  
Olga Alexander on 263923

The next monthly luncheon in the Church Hall will be held on Tuesday 30th June and the summer Tea Party will be on 21st July at Longwood Barn. There will be no luncheon in August but they will resume on Tuesday 29th September. Make a note of the dates in your diary and come along and join the friendly atmosphere for a chat with friends, old and new.

If you would like to join us for lunch just come along. If transport down to the Church Hall is difficult telephone Olga Alexander on 263923 to see if we can collect you.



## BOWLS CLUB

Secretary: Eva Rolfe 263151

The last four games of the winter league certainly boosted our morale. Sproughton came to us on 25th March the result being 8-2 to us. On the 31st we went to Belstead where although we only managed to draw one game that gave us 1 point, which is more than a lot of teams score there. Old Felixstowe came to us on 1st April we only managed to win one game scoring 2 points, our last match of the league was at home to Copdock we again managed an 8-2 victory. So in the last 4 games we had scored 19 points, nearly as many as we had scored in the previous 12 matches altogether unfortunately this did not improve our position at the bottom of the division. The summer league has now started both our games against Stratford St Mary and Burstall were at home and both resulted in 6-4 wins. Lets hope we can continue this form or perhaps improve!!

Fixtures - June: 3rd Polstead home, 10th Bramford away, 22nd Burstall away

July: 1st Bramford home, 8th Hintlesham away, 15th Sproughton away, 29th Sproughton home.

On Sunday May 10th Nayland Bowls Club held their annual charity tournament inviting 20 local clubs who each play 4 games. Unfortunately one club had pull out due to illness with no replacement available so four of the Nayland players were drawn to play in their place. After two games several teams including Nayland had won both games, after the third session some teams lost a game. Nayland drew their game and so did one other club. In their last game Nayland had to play Copdock who at that point had not lost a game, it was a tough match after 6 ends it was 4 all. Copdock managed to get on the jack first in the last end with only one wood left for each of the skips. The Nayland skip managed to knock the jack across to 2 of their woods however there was still a draw shot open for the Copdock skip. Fortunately for Nayland he fell short. Nayland now had 7 points, so had one other club but as Nayland had scored more shots they were victorious in their own competition. Thanks to all the club members who gave up their day we raised in the region of £500 from which a donation will be made to the East Anglian Air Ambulance.

*Triumphant Four: Diana Whiting, Chris Everitt, Sylvia Bond & Eva Rolfe*

*Sylvia Bond*







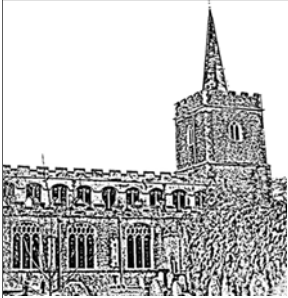
## THE VILLAGE LUNCH

Jo Murrison 262369

The last Village Lunch held on 29th April was very successful. The speaker was Phillip Wise, Curator of Ipswich and Colchester Museums, who gave a very interesting talk about the "Refurbishment of the Colchester Castle exhibition and the Fenwick Treasure uncovered on the Williams and Griffin construction site.

The next Village Lunch will be held on Wednesday 21st October; the speaker will be announced in the next issue of the Community Times.

Thank you to all our helpers and all those who support our lunches. Since 2001 we have raised a total of £9,452 for equipment and maintenance in the Village Hall.



## THE FRIENDS OF ST. JAMES' CHURCH, NAYLAND

Registered Charity Number 1052641

Chairman: Alan Edwards 262800

At the Annual General meeting, it was announced that the Friends, having investigated the practicalities, and in view of their strong financial position, had agreed in principle with the Parochial Church Council that the next project within St. James' should be the construction of a Lavatory, small Kitchen and a parish office. Discussions about an acceptable way of achieving this have already taken place with the Diocese.

The Friends are delighted that the P.C.C. - who also are now in a strong financial position - have given their support to the project, which will no doubt be a considerable and welcome improvement to our Church.

Because there will need to be consultation with many expert organisations, it will be some time before a plan can be produced: However, it is to be hoped that the P.C.C. will press on with this scheme with a view to completing it within the next 3 years. Full details will, of course, be published as soon as they become available.

The Friends are extremely grateful to John Jervios and family for their donation of £800 from the collection at the memorial service of Bethan Jervios.



## NAYLAND FUNDRAISING COMMITTEE

Secretary: Caroline Lowe 263852

We were very pleased with the result of our Spring Fair in the Village Hall on Saturday 25<sup>th</sup> April as we raised £2600 for the PSP - Progressive Supranuclear Palsy. This relatively unknown illness is a Parkinson's-like neurological condition caused by the progressive death of nerve cells in the brain.

There were a variety of different stalls at the Fair. This included stalls such as The Great Horkesley Gift Room, Blue Owl, Cluck Cluck, Vintage China, Mrs Bennett's Pickles, Stella and Dot jewellery and homemade cushions as well as our usual popular cakes and plants. Face painting and a Balloon artist were also available for the children.

We would like to thank the large number of people who made cakes for us as the stall made £462.00! A ploughman's and soup lunch was also served. Thank you to everyone who made donations helped on the day or attended the Fair. Your support is very much appreciated.



## NAYLAND SURGERY NEWS

[www.northhillsurgery.co.uk](http://www.northhillsurgery.co.uk)

Rachel Beales, Practice Manager 578070

In common with other GP Practices, North Hill Medical Group (NHMG) with its local Surgeries in Nayland, West Bergholt and North Hill Colchester, established a Patient Reference Group (PRG) around four years ago. These groups, sometimes known as Patient Participation Groups, are being developed to seek the views of patients to enable GP Practices to gather patient feedback on the services they deliver, with a view to improving the experience patients have of what their Practices have to offer.

Belonging to the PRG gives you the opportunity to have your say directly through regular meetings and through a 'virtual' email group. To encourage as much participation as possible NHMG and its PRG are working together to enlarge the Patient Group. We want to recruit a good cross section of the community we serve, cutting across all age groups and targeting the whole range of needs including those of carers. If you currently have no medical needs and are lucky enough not to need a doctor very often we still want you - you are able to give us your personal view (and the views of your friends and neighbours) of the wider picture.

To obtain more information about how you can get involved you can pick up one of leaflets 'Patient and Public Involvement' from the reception team at 93 Bear St, Nayland, or one of the other surgeries. Alternatively you can browse through the Practice website: [northhillsurgery.co.uk](http://northhillsurgery.co.uk). Please join us to work towards making our local patient experience even better!

**Mark Tatham, Chairman NHMG Patient Reference Group**



## NAYLAND MOTHER & TODDLER GROUP

Leaders: Michelle Plumb 264116 michelleplumb11@gmail.com  
Alice Palmer 263629 alice\_brown42@hotmail.com

Nayland Mother and Toddler Group meet every Friday in term time at Nayland Village Hall from 9:45 til 11:45. Its a friendly group with lots of toys for your little ones to enjoy. Tea and coffee is available to mums, dads and carers and juice and biscuits for the children. Its a great place for new mums to meet people and make friends! First visit to us is free! Then its £3 per mother and child(ren). Look forward to seeing you there!



## MESSY CHURCH AT PENTACORD BENEFICE

**Churches of Nayland, Wiston, Leavenheath, Polstead, Stoke by Nayland**  
For children and parents: Activities, crafts, worship followed by afternoon tea.



For further information: 01206 262719.

At April's Messy Church (at the time of writing May's Messy Church is yet to take place!) the Emmaus story set the theme of new life and the children made an Easter pilgrimage around the church culminating in the story of the resurrection. This was followed by an Easter Egg hunt in the Churchyard. Other activities included making pompom chicks and rabbits and our own version of Faberge's famous eggs!

Next Messy Church – Sunday 28th June, St Mary's Church, Stoke by Nayland – 4pm – 6pm. Please come along and enjoy more art and craft activities (including flag making and fort building) for children and families based around informal worship and afternoon tea. There is no Messy Church in July.



## FRIENDS OF WISTON CHURCH

*Registered Charity No 1158565*

Secretary: Caroline Ross-Stewart 263701 wistonfriends@gmail.com

Chairman: Bill Starling 262397 billstarling@hotmail.com

The new membership brochure for the Friends is now available and we hope you will join us in helping preserve this wonderful building. Please look out for the brochure at all the usual places around the village. Please look too, for details of our next concert. Unfortunately the

double Grammy-nominated guitarist, Berta Rojas, has had to cancel her European tour due to illness so she will not be performing in June as planned. We wish Berta a speedy recovery and hope to see her later in the year and are currently in the process of booking another artist for the concert.

The Trustees would like sincerely to thank Tibby Mimpriss, who is standing down as Secretary, for the tremendous contribution that she and her husband, Peter, have made to the founding of the new Friends charity.

Please note our new email address - wistonfriends@gmail.com. We would love to hear from you with any enquiries about membership etc or perhaps suggestions as to how we might continue to raise funds. Please see page 13 for information regarding the tennis tournament now being planned.

## ROGATION PROCESSION

On Sunday 10<sup>th</sup> May, some thirty parishioners and children joined the annual Rogation Procession by tractor and trailer from Nayland to Wiston.

On the way we blessed the crops and animals, and gave thanks for our villages and communities. The service was led by David Pryor, Lay Elder. We finished at Wiston Mill for a wonderful tea laid on by Suki Cohen and her team.







## NAYLAND PRIMARY SCHOOL : YEAR SIX, THE EAGLES & YEAR FIVE, THE KESTRELS

Mrs Kennedy & Mrs Pettman, Year 6 class teachers  
Kathi Brandon, Year 5 Teacher



### Music Exam Successes!

Pupils from the Eagle (Year 6) and Kestrel (Year 5) classes were successful in passing music exams. Kayleigh Bishop (trombone), Eloise Bozwood-Davies (French horn) and Evie Hughes (French horn) gained their grade one, whilst Charlie Walder (French horn) gained his grade two. Well done everyone!

### A trip to The Globe Theatre, London

The Eagle and Kestrel Classes thoroughly enjoyed their joint trip to the Globe Theatre. The children are currently studying Tudor Nayland during its wool trading heyday. No study of this period would be complete without learning about one of the most influential writers in the English language – Shakespeare. The Eagle class are to perform an adaptation of 'A Midsummer Night's Dream' at the end of term and are now eager to put into practice some of the ideas they learned whilst on their visit to the Globe.



## Woodland Corner

Administrator: Caroline Keep 263054  
e-mail: woodlandcorner@outlook.com

Manager: Sue Clarke 263054  
<http://woodlandcornernayland.blogspot.com>

behind Nayland Primary School, Bear Street,  
Nayland, Colchester, CO6 4HY

Registered Charity  
No. 1035330

### OFSTED

Following our recent Ofsted inspection on 24<sup>th</sup> March, Woodland Corner is very proud to announce that we received an overall rating of 'Good' with an 'Outstanding' for the Well-being of Children, demonstrating the strength and quality of our provision.

### HIGH QUALITY CHILDCARE ON YOUR DOORSTEP

We will have spaces available for Playgroup sessions in September and will shortly be allocating places. If you are looking for childcare, please contact us to arrange a visit to look round. We have a very strong ethos of learning through play and provide a safe and happy environment where children can flourish.

We also offer affordable and flexible Breakfast and After School Clubs from 8 am to 6 pm for older children. These can be booked either as a regular booking or on an ad hoc basis. Breakfast and tea are provided depending on your booking. Further details are available on our blog under 'Sessions and Fees'. Children attending can choose from a wide range of fun activities to suit their interests.

### BARN DANCE

A great night out was had by all, young and old(er) at our very successful Barn Dance. The live band, Most Unexpected, were fantastic and had everyone on the floor dancing. We raised an amazing £460 towards Woodland Corner funds. This will go towards providing additional equipment and resources for the children to use at Woodland Corner. A huge thank you to everyone who supported us on the night and to everyone who worked so hard behind the scenes to make it such an enjoyable and successful evening.





## ST JAMES' CHURCHYARD WORKING PARTY



This year's Spring Working Party was again well supported and the weather was good which enabled us to achieve all our objectives.

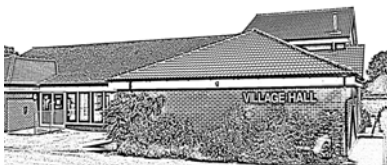
My grateful thanks to all who helped make our churchyard so attractive at this time of year.

**James Carver**

## MAY DAY WALK

The Conservation Society guided footpath walk on the first May Bank Holiday was blessed with fine weather and an interesting amble for the 27 members and friends who took part.

On reaching St Stephens Chapel the party had an opportunity to look across the valley to the magnificent Bures Dragon, which has been cut into the hillside opposite by the Probert family and friends to celebrate the Queen's Diamond Jubilee. Moving into the Chapel those members who hadn't visited before were amazed to find four wonderfully carved effigies of the Earls of Oxford, one of whom had fought at Agincourt.



## VILLAGE HALL MANAGEMENT COMMITTEE

Registered Charity No 304 928

Chairman: Iain Wright 263646

Secretary: Christine Thompson 262825



### APRIL COMMITTEE MEETING

Mary Knapp was welcomed onto the committee.

A presentation was made to Rosemary Knox to thank her for her practical help and wise advice during her time on the VHMC. It is hoped that the PC will be able to allocate a representative.

#### TREASURER'S REPORT

- COIF Endowment £13500, COIF £13,885, Bank £6,662, Cash £188, Debtors £0, Assets £4,513.71.

#### MATTERS ARISING & HOUSEKEEPING BOOK

- There were no new comments in the housekeeping book.
- The changing rooms have been steam cleaned but the shower heads still need cleaning.
- The firm of Edward Hyde has repaired the surface coating of the flooring. However the floor under the stage needs inspecting as some of the boards are stuck together.
- Gary Napper will be able to paint the barge boards in June.
- Mortimers will be asked to quote for tackling the thistles around the field.
- The damaged loudspeaker socket has been repaired.
- The ladies who organise the village lunch were thanked for their time spent on obtaining new crockery for the kitchen.
- It is hoped to also provide a hot cupboard for the kitchen. This will involve moving some units and will cost £1500-£2000.
- The cause of the smell in the kitchen has been rectified, however, a new base needs to be fitted to one of the kitchen units. David Hewitt will be asked to do this.

#### MAINTENANCE

- It was agreed that the chairs needs cleaning again. The firm who completed this work previously will be contacted.
- Brian May will be asked to look at the heating system as it is losing pressure.
- Nick Moriarty will take over as fire warden for the time being.
- A quotation will be sought for the repainting of some of the interior.
- The roof tiles will need replacing in 2 years time. While this work is being done, extractor fans can be placed in the roof to remove hot air in summer and circulate air in winter. Also improvements can be made to the roof insulation.

#### BOOKINGS

- The additional premium to cover the hirers of the Hall for public liability is £41.87. It was agreed to go ahead. However this only covers non commercial events. It is assumed that businesses will have their own cover. The Terms and Conditions will be reworded accordingly.
- Stoke by Nayland FC wish to use our field and changing rooms. An inspection of the changing rooms will be made each time to ensure they are kept clean.
- The T&C's for the footballers will be amended to include insurance.
- The inventory needs updating to include the new crockery.
- Some ballroom dancing workshops will take place in Sept/Oct.
- A hip hop workshop session will be trialled.
- Trot on Fit, yoga based exercise class for riders have been approached to start a class on Tuesday evening.
- Three helium canisters were found on the field. Hirers will be reminded that no helium balloons are allowed in the Hall.
- Two licences were signed.
- The Art club have been cold in the Hall. The heating time clock needs to be overridden by the class to ensure that the central heating is on.
- There might be the need for 3 dustbins as some hirers generate a great deal of rubbish

#### CINEMA

- Dates for 2015: 22 May 'The Imitation Game', 26 June 'The Theory of Everything', 24 July 'The Second Best Marigold Hotel', 25 September, 30 October, 27 November.
- For the next film the subtitles will be added.

#### AOB

- Should we have a defibrillator in the Hall? First Response will be consulted about this as we would need to have people who know how to use it.
- It was agreed to purchase two new signs to indicate the location of the upstairs meeting room and to renew any damaged signs.
- A wooden wedge will be found for the bar.
- The next meeting will be **Monday 1st June** at 7.45pm.



## SEE IT, SNAP IT, SEND IT...



'Bottoms Up', synchronised swimming by Nayland's resident swans at Lock Pool. Thanks to Trevor Smy for sending this photo.

If you have a snapshot taken in the parish to feature in a future issue please send it to [lorraine.nayland@btinternet.com](mailto:lorraine.nayland@btinternet.com)

### NAYLAND MOBILE LIBRARY

#### Route 20 : High Street P.O.

Saturdays at 10am-11.15am, every four weeks

**30 May - 27 June - 25 July**

#### Route 9 : Parkers Way

Saturdays at 3.55pm-4.30pm, every four weeks

**13 June - 11 July - 8 August**

Tel: 01473 263838 [www.suffolklibraries.co.uk](http://www.suffolklibraries.co.uk)

### Leavenheath Open Gardens#

#### MAGNA CARTA SCARECROW TRAIL#

**Sunday 14th June 11:00am – 5:00pm**

Gardens open, Craft Fair village hall, Magna Carta exhibition, Music- Choir singing period music, Men of Straw- folk/country duo, Medieval stocks & games, Visit a Medieval house, Apple bobbing, Lucky dip, Magna Carta clues to solve Entrance via Village Hall £4 adults, Children under 14 free In aid of The East Anglia's Children's Hospice & Leavenheath Beavers/Cubs & Scouts [www.leavenheath.org](http://www.leavenheath.org)

### Wheelers Wine Cellar Roadshow

is coming to a venue near you!

Join the Wheelers Wine Cellar team this summer for an evening of wine tasting, nibbles and champagne at a venue near you – The Fleece Hotel in Boxford. The Wheelers Wine Cellar Roadshows offer exceptional value for money and are the best way to discover new and interesting wines from their vast portfolio in a very relaxed, informal setting.

Taste over 20 exceptional wines, all differing in style, from around the globe, a glass of champagne and a selection of seasonal nibbles – a wonderful opportunity to try before you buy. All the wines shown will be available at heavily discounted prices for attendees, and wine experts will be on hand to share a glass and offer advice and guidance on the world of wine.

Tickets are just £12 per person, or 4 for £40 or 6 for £50.

Visit [www.wheelerswine.co.uk](http://www.wheelerswine.co.uk) or call **01206 713560** for further information and to book.

## NAYLAND WITH WISSINGTON PARISH COUNCIL

### DEBRIS IN MILLSTREAM

Recently the Environment Agency cleared the millstream of a large amount of debris trapped beside the Mill Street bridge. Most of this appeared to be garden waste.

The Parish Council would like to remind residents that they should not dispose of any garden waste in the waterways. The rights and responsibilities associated with living beside a waterway are set out in the Environment Agency booklet *Living on the Edge*, available online at [www.gov.uk/government/publications/riverside-ownership-rights-and-responsibilities](http://www.gov.uk/government/publications/riverside-ownership-rights-and-responsibilities) or by post.

**Mary George, Chairman**

### HEAVY LORRIES TRAVELLING THROUGH VILLAGE

There have been several incidents within the village involving large lorries being misdirected by sat nav, trying to turn into or reverse on junctions such as the T-junction of Mill Street/Bear Street, or travelling along pavements. Some of these incidents have caused damage to property.

If you see lorries causing problems anywhere in the parish it is possible to report directly to Suffolk Council by using the online HGV Incident reporting system.

Alternatively, contact the Parish Clerk at: CHARIS, Upsher Green, Gt. Waldingfield, Sudbury CO10 0TT Tel: 01787 880935 [pc@naylandwithwissington.suffolk.gov.uk](mailto:pc@naylandwithwissington.suffolk.gov.uk) with full details including name of company and vehicle registration.

The Suffolk Highways link is: [www.suffolk.gov.uk/environment-and-transport/highways/traffic-management-and-road-safety/lorry-management](http://www.suffolk.gov.uk/environment-and-transport/highways/traffic-management-and-road-safety/lorry-management)

**Mary George, Chairman**

### Sunday 7th June: Boxford Open Gardens

11am-5pm. Over 20 gardens open in Boxford, Groton and Edwardstone. Coffee, cakes, ploughman's lunches and cream teas in the Village Hall. Plant and cake stalls

Church Tower open for breathtaking views

FREE Shuttle bus from the village centre

Look out for the Garden Open signs and pay £5 (children under 16 free) at the first one you come to!

Further details Angela Tolputt 01787 212264

### A.J. Gardner Car Repairs

- Friendly reliable Service
- Repairs to cars and light vans, New or Old
- Very reasonable rates.
- M.O.T. preparation and repairs
- Servicing
- No V.A.T on Labour

Still Trading at  
Ricklands Farm, Crawley Road, Wiston  
Tel 01206 262172 Mob 07970 421626

# Garden Notes

by The Old Muckspreader



*Paeonia Lutea Ludlowii*

At the tie of writing the weather is still treacherous with cold nights restricting the growth and flowering of many plants, especially the tender ones which can normally be planted out at this time of year; furthermore very few of those on the Church Fete Plant Stall will be in flower. Meanwhile a lot of work is involved bringing tender subjects back into frames and greenhouses overnight. However, perhaps we should be thankful at least that the spring drought appears to be over, and a decent amount of rain has descended.

Looking back at last June's article, the OM/S mentioned a dwarf Lilac which he had reduced in height by careful pruning over two seasons. He can now see how successful the operation was, since it is covered in flower.

Now is the best time to insert stakes or even brushwood into clumps of perennials to give them support; at the same time some, such as autumn flowering Asters (Michaelmas Daisies) will benefit by being subjected to the Chelsea Chop, which will shorten plants which are otherwise inclined to become leggy and top heavy when in flower.

One of the plants in this garden which often attracts notice is the Tree Peony. There are several species of this plant but the most common is *Paeonia Lutea Ludlowii*, with large yellow flowers and attractive foliage; the seed pods that follow contain shiny brown seeds about the size of large peas. When planted they will produce roots only in their first year, with no visible growth until the second year; after that it is very slow going, but if you are patient after about five years you might have a flowering plant. Ours here is about six feet high, and about the same in extent; not one for the small garden. There are several other species some of which have exotic flowers which can be obtained at considerable cost from specialist nurseries.

At long last we seem to have succeeded in enticing some Goldfinches onto our feeder, so perhaps they are also nesting nearby. The Swallows have returned once more. Unfortunately the unwelcome wildlife, such as rabbits, squirrels, and the occasional Muntjac also appear to be flourishing. Presumably one cannot expect to get one lot without the other.

## WORDSEARCH: Summer Plants

## ANAGRAMS: Plants for Bees & Butterflies

E	A	V	A	D	I	C	T	A	M	N	U	S	X	S	A
N	S	S	C	J	W	O	I	Q	O	B	A	S	I	G	D
O	O	E	I	E	O	T	R	U	S	S	S	R	W	Y	R
R	I	U	N	O	N	S	P	I	I	O	I	E	T	E	A
S	B	N	O	A	P	E	T	L	T	P	L	A	D	J	N
E	A	A	R	R	N	T	A	E	A	U	A	M	A	U	O
T	C	T	E	P	E	C	Z	G	P	K	T	O	H	H	M
O	S	G	V	T	O	A	S	I	H	R	I	T	L	A	M
A	W	Y	S	R	J	W	N	A	A	K	G	U	I	L	U
T	T	E	E	O	E	O	R	R	W	S	I	A	A	B	I
S	Z	M	U	I	N	I	H	P	L	E	D	O	U	V	L
O	E	O	B	A	S	T	E	G	R	U	O	N	E	R	L
H	O	N	E	Y	S	U	C	K	L	E	S	E	P	X	A

ALLIUM

DIGITALIS

LUPIN

AQUILEGIA

GAURA

MONARDA

ASTRANTIA

HEMEROCALIS

ROSA

DAHLIA

HOSTA

SCABIOSA

DELPHINIUM

HONEYSUCKLE

SEDUM

DICTAMNUS

IRIS

VERONICA

1 GELAQAIUI

2 SYEKOHLNUCE

3 DEVALREN

4 DEBALUDI

5 ABSICUSO

6 AMORSYRE

7 LOFEVOXEG

8 RWLOLLWAFE

9 WORRFONLEC

10 LORFBTIRTOFEDOSI

11 TEHEHAR

12 OSTOEHCUN

13 ITENTGSNENIGTL

Wordsearch words may be horizontal, vertical, or diagonal and forward or backwards

**Solutions on page 42**





*Nurse Mary Kirkby surrounded by "her babies"*

In the early part of the twentieth century the District Nurse was a familiar and respected figure in the community. There must have been very few people who were not glad of her services at some time in their lives. Most babies were born at home and the sight of the Nurse pedalling through the village on her bicycle at top speed often meant that a new baby was about to enter the world. Here in Nayland anyone born between 1927 and 1947 was almost certainly delivered by Nurse Mary Kirkby who was employed in the area until she retired in 1947, a year before the creation of the National Health Service.

Before the NHS came into being local District Nursing Associations were responsible for employing District Nurses, paying their salaries and providing them with accommodation. They ran provident schemes which people were encouraged to join, paying a small regular subscription in order to receive nursing if and when the need arose. The very poor and old age pensioners did not pay but it was only after the NHS began in 1948 that universal health care became free. Home nursing was paid for by National Insurance contributions, district nurses then being employed by local authorities.

I have been given copies of two Annual Reports for the *Nayland and Stoke District Nursing Association* for the years 1925 and 1929. In 1925, the Committee included the Reverend Cliff, Mr Brooks Mills, Nayland school's headmaster, Captain and Mrs Walsh of Stourbank and Miss Cuddon of the brewery family. While the Committee reported the continued success of the Association in Nayland and Wiston, they warned expenses were increasing and hoped that new subscribers would come forward to support this excellent institution. There were at that time nearly 40 subscribers paying 10/- or more and 115 paying less than 10/-. The District Nurse was not named but lived at The Ferns, Back Hill, Stoke by Nayland. She made a total of 877 visits for the year to Nayland, 1,192 to Stoke, 23 to Leavenheath and 65 to Wiston, including Maternity and Surgical and Medical cases.

In the Seventh Annual Report of 1929 the District Nurse was shown as Nurse Kirkby who lived in one of the Churchyard Almshouses at Stoke-by-Nayland. The Committee had found it necessary to provide the Nurse with a small motor car to enable her to carry on her beneficent work which of course entailed extra expense to the Association. "The number of visits paid by Nurse Kirkby during the year showed how very highly her services are appreciated and bear eloquent testimony to her valuable work." Nurse Kirkby had made a staggering number of 6,719 visits for the year of which General Nursing Cases were 253, Midwifery and Maternity 14, Infant Health 408, General Nursing Visits 4,742 and Casual visits 1,569.

From the report it is obvious that Nurse Kirkby worked very hard in this area. She was clearly highly regarded and when she retired in October 1947 the community showed their appreciation

with a special event which was described in the Parish Magazine of that date:

"A very pleasant and interesting ceremony took place in the grounds of Wiston Hall, very kindly lent by Mrs Ward. Two hundred people partook of her hospitality to tea, which was tastefully served in this beautiful setting, and generously given by her. The occasion was a presentation to Nurse Mary E Kirkby who has served this district so well and faithfully for 20 years. She was the recipient of a chimney clock and a pair of Glastonbury boots, and a cheque. The presentation was made by Mrs Gray who made reference to the sterling worth of Nurse Kirkby's work and sacrifice. Nurse Kirkby, in a well chosen speech, made grateful reference to the work of the [Nursing Association] Committee and the collectors which had made this happy occasion possible. She thanked all kind friends who had so generously subscribed to her presentation and made it such a memorable occasion."

One Nayland baby delivered by Nurse Kirkby was Adrian Amos who was born in the 1930s, in part of what is now Church Mews, and was later told by his parents about his arrival. When it became obvious his birth was imminent Adrian's father ran out of the house to the public telephone and Nurse Kirkby hurried down from Stoke on her bicycle to deliver Adrian. He arrived safely but when he was a few days old he was dangerously ill and Nurse Kirkby was called for again. It seems she must have been very concerned about him as Adrian was told that she took him round the corner to the Sacred Heart Church for a blessing. Thankfully he survived to tell the tale!

Edna Hammond was another Nayland baby delivered by Nurse Kirkby. Edna's mother Ethel was a member of the Littlebury family who kept the Post Office for many years. Edna had a sister Margaret who was five years old when she was born. Margaret remembers that Nurse Kirkby held a party every Christmas for her babies and she very kindly showed me a lovely note written to her by Nurse Kirkby on the birth of her baby sister Edna, as follows:

"Received from Miss Margaret Hammond Nayland, the sum of 26 farthings in return for one extra large baby sister, weight 10 lb 2 oz, complete with much dark hair 'curly' with two arms two legs fingers and toes complete. Signed Mary E Kirkby (Nurse). October 24<sup>th</sup> 1937."

Joyce Fullbrook tells me she was also delivered by Nurse Kirkby at her family's home in Birch Street as was Monica Halls in Fen Street. If there is anyone else who was born in Nayland before 1947 who can remember Nurse Kirkby I would be pleased to hear from them.

**Wendy Sparrow, Parish Recorder**

[Sources: [www.districtnursing150.org.uk/history](http://www.districtnursing150.org.uk/history)]



# Calendar

The photographic competition to generate images for the 2016 Nayland with Wissington Calendar was held on 4th May. There were 124 beautiful scenes submitted for judging, making selection of just twelve scenes very difficult indeed.

The judge, Geoff Meadowcroft, felt the quality of entries continues to improve and was impressed by the marvellous variety of village activities and picturesque views that had been represented and the interesting compositions captured.

The photographs selected were submitted by Graham Wiles, Nigel Evans, Anne Spencer, Trevor Smy, Hazel Gardiner, Mike Hunter, Lorraine Brooks, Antony Day, Wendy Sparrow and Oliver Hughes, one of our young photographers.

You will have to wait for the calendar to see the selected entries but shown here are an example of the delightful images submitted and on show at the exhibition. As hoped entries represented the different seasons with our range of weather conditions, from glorious sunshine to snow and flood. Locations ranged from village activities and events like the Church Fete, Open Gardens, Flower Show and Remembrance services, to parish landmarks, such as St James and St Mary's Churches and Jane Walker at Wiston. There were a variety of street scenes, views of the meandering river Stour, the countryside and farming views and some interesting architectural features including mill stones and mill wheels. Several people managed to capture spur of the moment scenes, such as a wedding bus in the High Street, a snow plough clearing Horkesley Road and fascinating scenes of traffic negotiating floods on the by-pass.



Churchyard working party, Andora Carver



Birch Street, Colin Ramsell



Caley Green, David Green



Nayland Flower Show, James Maguire

## A.S. Ironing Services

All your ironing needs  
Occasional or weekly  
Free collection and delivery  
Fully insured  
Established 2004

**Tel: 01787 228036** after 4pm  
or **Mob: 07790 344090**  
**Annette Southernwood**

## PROFESSIONAL JET WASHING SERVICE



**DRIVEWAYS & PATHS  
BLOCK PAVING  
PATIOS**

**DOES YOUR HOME EXTERIOR NEED SPRUCING UP?  
SLIPPERY OR UNSIGHTLY DRIVE, PATIO OR PATHWAY?  
CALL NOW FOR A NO OBLIGATION QUOTE**

**07557 998325 - aneat@icloud.com**  
**A NEAT SERVICE - KEEPING YOUR HOME NEAT & TIDY**



# Competition

The images selected for inclusion in the calendar have been matched up with interesting old images of the village and historic detail is being added by Wendy Sparrow. The village calendar will be on sale at the Flower Show in the Village Hall on 8th August – don't miss out!

In the meantime, don't forget to keep your cameras to hand to capture scenes for next year's competition.

View these images in the colour version of the *Community Times* at [www.naylandcommunitycouncil.org.uk](http://www.naylandcommunitycouncil.org.uk) on the *Community Times* page.

NAYLAND WITH WISSINGTON COMMUNITY TIMES



St Mary's Church, Wiston, Sandra Gibbons



Suffolk Punches behind the Anchor, Pat Bray



Wiston Mill, Suki Cohen



Near Court Knoll, Julie Clark



Wedding bus in High Street, Mike Almond

## Jane Walker, Independent Safari Consultant

Photographic, walking, bird-watching, horse-riding. Bookings ATOL / AITO bonded.



Farthing Hall, Nayland with Wissington  
[woodbridgesafaris.co.uk](http://woodbridgesafaris.co.uk) / [horsebacksafaris.co.uk](http://horsebacksafaris.co.uk)  
01206 262352, [janew@safariconsultantuk.com](mailto:janew@safariconsultantuk.com)



# VILLAGE PLAYERS' DEAD RINGER

The Village Players marked the 2015 general election campaign with a presentation of *Dead Ringer*, Charles Ross's mystery-cum-satire. The play reminds us that in politics, things are not always as they seem. When a charismatic prime minister dies shortly before an election, his desperate colleagues arrange for a stand-in to act his part, but the actor grows into the role rather too well for the real politicians' liking. But when it becomes clear that the original prime minister's death was deliberate the question arises: who is tricking whom? The audience is invited to think that whoever is pulling the strings, the electorate is rather left hanging.

The 1980s setting for the play helps give the feeling that it's a mix of *Yes Minister* and an Agatha Christie, and as ever the Players provide a brilliant set, including a red telephone to the US president and an upmarket drinks trolley that looked extremely serious but was the setting for a fine running joke. But it was the actors that made the play come alive. Justin Dowding had the complex task of playing the prime minister, the actor, and showing the actor-as-prime-minister; he had to create different styles for each. Intriguingly, the actor was probably the most appealing of his characters which is perhaps a reference to Ronald Reagan's success. Emma Wallis and John McCarroll's characters Frances and Dick had to show that they had the gravitas of senior politicians, but their place at the heart of the whodunit made them more nuanced characters. By contrast, the 'real' politician, Nick Moriarty's Ray seemed slower and less glamorous in the first act but provided a moral bedrock as the play moved towards its denouement. Sam Pentney as Nigel and Lucy Bartlett as Eva reminded us that among the plotting were real people, civilians caught in the crossfire. And Jim Bond's Colonel Hardacre showed the 1980s Establishment spook.



**A NEAT SERVICE - PET VISITING**  
 Keeping your pets .... happy & content!  
 Dog Walking? Holiday?  
 Let us feed your pets  
 An alternative to Boarding  
 Tailored to suit you  
 Contact Michael 07557 998325



**JMAC INTERIORS**  
 Specialist Painters & Decorators  
 Est. 1997



- ✗ All Interior and Exterior Work Undertaken
- ✗ Specialist in Period & Listed Properties
- ✗ Wallpaper Hanging to the Highest Standards
- ✗ Restoration of Ornate Cornices & Ceiling Roses
- ✗ References Available
- ✗ Fully Insured



Contact: Jeff Macdonald  
 Tel: 07778 031505 - 01787 224674  
 jmacinteriors@aol.com





## Dedham Vale AONB and Stour Valley Conference Balancing Priorities in the Stour Valley

We would like to invite you to the AONB and Stour Valley Forum Conference at Shrubs Farm, Lamarsh, CO8 5EA on Thursday 25 June. The event will include presentations on the work of the AONB and Stour Valley team and from partner organisations about their work in the area.

- Robert Erith TD DL, Chairman of the Partnership: A look at the topics of interest in the AONB and Stour Valley over the last 12 months.
- Cllr Nigel Chapman, Chairman, Joint Advisory Committee: The needs of business, the environment, residents & visitors.
- Ian Williams, Anglian Adventures Ltd: Can the AONB and Stour Valley help the development of a business?
- Neil Catchpole, AONB Countryside Officer: What have we got, why it's important and what we can do to support it.
- Mary Tebje, Visit Essex: How we can enhance the visitor experience
- Question & Answer session followed by Buffet Lunch and networking opportunity.
- In the afternoon there will be an opportunity to undertake site visits or to take part in a work shop.

More information for Simon Amstutz AONB manager 01394 384948 or [simon.amstutz@suffolk.gov.uk](mailto:simon.amstutz@suffolk.gov.uk) or the website: <http://www.dedhamvalestourvalley.org/about-us/events/dedham-vale-aonb-and-stour-valley-forum-conference/>

### ALLOTMENTS AT ASSINGTON MILL

Six raised beds (10 x 4ft each) are available at Assington Mill.

Rabbit-proof fencing, good quality soil and water nearby. Please contact Anne Holden on 01787 229955 for information.



### 'See It, Hear It, Report It'.....

Detectives are appealing to local communities to help them put an end to a series of 80 burglaries across Suffolk and south Norfolk by launching the 'See it, Hear it, Report it' campaign.

The campaign is being supported by a retired couple from a village near Bury St Edmunds, who were victims of a burglary and have spoken about the effect it had on them.

Operation Domain was launched by Suffolk Constabulary in response to the break-ins, which currently number 68 in Suffolk and 12 in Norfolk, dating back to November 2014. These have predominantly taken place in the Babergh and Mid Suffolk districts, with St Edmundsbury and Suffolk Coastal the other areas most affected.

The burglaries are being linked by police due to the similarities in their nature and forensic evidence that has been obtained from the crime scenes. The typical features of these break-ins is that they occur in rural areas, usually in the afternoon or early evening, involve forced entry to the property and with jewellery the main target for the criminals. Although officers are following a number of leads in pursuit of the burglars, police are appealing for local communities to be on the look-out for any suspicious behaviour in their villages and not to disregard persons or vehicles that appear unusual or out of place.

As the majority of the burglaries in this series involve houses being entered by force rather than because of insecurities, detectives are asking people to be their 'eyes and ears' and help catch those responsible for these crimes.

The 'See it, Hear it, Report it' campaign runs alongside the well-known burglary prevention message 'Close it, Lock it, Check it',

## DEDHAM VALE (AONB) AND STOUR VALLEY

### Management Plan Consultation



Can we improve the way we look after the Dedham Vale AONB and Stour Valley landscape?

Are we getting the balance right between people, the environment and economic development in the area?

We need your views on the new management plan.



Visit [www.dedhamvalestourvalley.org](http://www.dedhamvalestourvalley.org) by 3 June 2015 and follow link to online survey and draft plan, or submit comments to us at the AONB office, Highways Depot, Dock Lane, Melton, IP12 1PE

Stoke by Nayland WEA presents its Annual Day School  
Saturday 18 July 2015, Stoke by Nayland Village Hall 10.30am

### '200 YEARS OF LOCAL COUNTRYSIDE HISTORY'

An illustrated talk by Ashley Cooper following the fluctuating fortunes of local agriculture and village life through farm diaries, letters, reports from learned societies, and human memories looking at the land, those who worked it and lived around it, from about 1730 to 1940.

Total cost is just £14 including coffee on arrival, morning lecture, lunch, and a visit to Hill Farm, it's Museum and Roman Villa in Gestingthorpe (CO9 3BL). Places at the Museum in the afternoon are limited to 25 so early booking is recommended.

To book please contact: Sue Whiteley on 01787 210945 or email: [whiteleysa@hotmail.co.uk](mailto:whiteleysa@hotmail.co.uk)

but places an extra emphasis on the importance of community intelligence in providing crucial leads to apprehend the offenders.

Neighbourhood Watch schemes are a vital element of the local intelligence picture, and residents are encouraged to join their local scheme if one exists, or set one up if their village or community does not have one.

Members of the public can also sign-up to the Police Connect messaging service, which will provide them with direct updates by phone or email about crime in their area. Further information can be found on the Suffolk Constabulary website <http://www.suffolk.police.uk/>

Detective Inspector Nick Power, of Bury St Edmunds CID who is leading Operation Domain, said: "This is an alarming amount of burglaries, causing misery and distress to a vast number of individuals and families across Suffolk and also into Norfolk.

"My direct appeal to local communities is to not just ignore something you see or hear that seems out of place. This could include a suspicious vehicle outside your neighbour's house or hearing the sound of glass smashing nearby.

"Note down the car registration number or description of any suspicious persons you may have seen and report it to us if you believe it to be unusual. These criminals may present themselves as genuine callers, so if their behaviour seems odd then let us know."

"I would also urge people to get involved with Neighbourhood Watch as this is a vital resource for preventing crime and helps to foster community relations. The mere presence of Neighbourhood Watch signs are known to act as a deterrent to criminals, as they are a strong warning that they are entering an area where people look out for one another."

**Mandy, PCSO 3108 Coleman, Babergh Easy SNT**  
Tel: 101, Email: [babergheast.snt@suffolk.pnn.police.uk](mailto:babergheast.snt@suffolk.pnn.police.uk)

## FUNDANCING IN NAYLAND



FunDancing is held in Nayland Village Hall each Wednesday from 10-11am. During our recent charity week which had a 1950s theme and coffee morning following the class we raised over £2,000 for Age UK Suffolk.

FunDancing's next Charity Week (raising funds for Age UK Suffolk) starts on Monday 22nd June 2015 (in all classes). Finishing on Saturday 27th June 2015 with **"How To Style Yourself: A Fashion Show With a Difference"** for details please go to [www.style.fundancing.co.uk](http://www.style.fundancing.co.uk)

## TASTE OF SUDBURY FOOD & DRINK FESTIVAL

### 14<sup>th</sup> June 2015 – 11am to 6pm

Taking over the Market Hill in Sudbury and St. Peter's on Sunday 14<sup>th</sup> June, the Taste of Sudbury Food & Drink Festival will be the perfect summer treat for all food lovers. Local restaurants, eateries and food producers come together to celebrate the fabulous diverse range of food available on the Suffolk/Essex border.

The event will be opened by Lesley Dolphin of BBC Radio Suffolk and there will be cooking demonstrations by local chefs on the stage outside compered by Mark David and inside the church there will be cooking demonstrations by Neff Appliances organised by KSL Sudbury.

Regis Crepy from The Great House, Lavenham who has done

cooking demonstrations at the previous two festivals said last year: 'Once again it was a great food festival. The best in Suffolk'.

Sudbury has free parking throughout the day, free park & ride from Delphi Car Park and free entry into the festival, the only money spent will be on the goodies to buy. Whether you know what food you like or are a culinary adventurer, this is a foodies paradise with local produce to delights from around the world.

New for 2015, is the Scutcher's of Long Melford pop up restaurant, make sure your book early to ensure a table.

Organised by the Sudbury Town Team, a voluntary and non-profit making group representing the interests of local business, many of which have sponsored the event. For up to date information on exhibitors, sponsors, demonstrations keep checking the website at [www.tasteofsudbury.co.uk](http://www.tasteofsudbury.co.uk).

For up to date information and a review of the 2013 and 2104 events visit [www.tasteofsudbury.co.uk](http://www.tasteofsudbury.co.uk).

## Annual Report from James Finch - Your Stour Valley County Councillor

### SCC FREEZES COUNCIL TAX

SCC's share of council tax is to be frozen for a fifth year in a row, which means that Suffolk residents will not pay any more than they did in 2010/11. The council has successfully delivered savings in excess of £130m over the last four years. However, with the government's deficit reduction programme set to continue until at least 2018/19, there is a forecast of a further £120m budget shortfall that will need to be addressed over the next three years.

### SUFFOLK SCHOOLS' LEAGUE TABLES

Figures out last month confirmed the trend of improvement in Suffolk's relative position in educational attainment. In data released by the government in January, Suffolk has climbed 12 places in the national league table for GCSE results since the previous year; from 137<sup>th</sup> to 125<sup>th</sup> out of 151 local authorities. This means we are getting ever closer to bridging the gap between ourselves and the national average.

### BETTER BROADBAND BDUK PROGRAMME

Plans to extend the roll-out of super-fast broadband to more households and business were signed October. Along with other commercial and existing programmes, the contract aims to extend the coverage of fibre broadband to 95% of homes and businesses in Suffolk. The £15m capital grant from BDUK will be locally matched by £5m from the New Anglia LEP's Local Growth Fund and £10m from SCC. The roadside fibre broadband cabinets that are being connected to the network serve very localised areas, so not all parts of the towns and villages where they are located will be able to receive fibre broadband initially. As the service becomes increasingly available, people should use the 'Better Broadband for Suffolk' website ([www.betterbroadbandsuffolk.com](http://www.betterbroadbandsuffolk.com)) to check to see if their home or business can receive faster broadband services.

### INVESTMENT IN SKILLS SECURED

Businesses and local councils are joining forces with the government to invest more than £18 million in equipping people with the skills local businesses need. This will be used to fund projects set out in the Greater Ipswich City Deal including a new youth employment centre in Ipswich and an incentive scheme to encourage businesses to invest in training. The money will fund employer-designed projects that will aim to halve youth unemployment in the Greater Ipswich area over the next two years.

### YOUTH EMPLOYMENT CENTRE OPENS IN SUFFOLK

The MyGo centre will offer all 16-24 year olds in Ipswich and the surrounding area free training, career and employment support.

### DRIVE TO CREATE 5,000 NEW APPRENTICESHIPS

A £1.5million campaign aimed at doubling the number of apprenticeships in Suffolk and creating thousands of new jobs and training opportunities for young people was launched.

### SUFFOLK'S WASTE CREATES ENERGY IN BLAKENHAM

£8million a year is the expected amount to be saved for Suffolk's tax payers by diverting Suffolk's waste from Landfill to this plant. This is now working to capacity with SCC committed to sending 196,000 tonnes for treatment.

### PLEDGE TO TACKLE MENTAL HEALTH

In February this year, Suffolk County Council have signed the Time to Change Organisational Pledge. The pledge is a public statement of aspiration that as an organisation, Suffolk County Council with the NHS in Suffolk will tackle mental health stigma and discrimination.

**James Finch, Suffolk County Councillor, Stour Valley Division**  
 Assington, Boxford, Bures St Mary, Edwardstone, Groton, Leavenheath, Lindsey,  
 Little Cornard, Milden, Nayland with Wissington, Newton, and Stoke by Nayland  
 Tel 01206 263649 Mobile 07545 423796



## SUE EASTALL PERSONAL CATERING

Imaginative and  
Corporate Catering

Receptions - Parties  
Weddings - Dinner Parties

**Tel: 07715 671894**  
eastallsue@gmail.com



WHEELERS  
Wine Cellar

# NOW OPEN

WHEELERS  
Wine Cellar

Shop open  
Wednesday to Saturday  
**10am - 6pm**

Come and visit our specialist wine cellar

Telephone: 01206 713560 | www.wheelerswine.co.uk

Birchwood Farm, Dedham, Essex CO7 6HX

## Would you like to find a way to deal with the problems of Pain? Sleep? Stress?

Find out how with a fast acting, non-invasive, drug free treatment that soothes aches, pains, stress and helps with sleep problems.

You'll receive a series of magnetic pulses from a hand held device. These pulses help to:

- release mental and emotional stress and tension
- stimulate cellular repair on injured body tissue
- reduce inflammation and promote relaxation



"I don't know how  
it works but it was  
like magic!"  
- M/s RV, Manager

**Call Paula Ruane  
now on  
07803 07210 to:**  
Reduce pain  
release stress  
improve sleep



**RUANE BIOENERGETICS**  
Rapidly reducing the effects of stress

paula.ruane@ruanebioenergetics.com www.RuaneBioEnergetics.com  
Mill Street, Nayland CO6 4HU



## The 2015 Taste of Sudbury FOOD & DRINK FESTIVAL

Promoting Local Produce & Local Restaurants

FRUIT & VEG • CHEESES  
ICE CREAMS • SPIRITS  
CHAMPAGNE • BEERS  
JUICES • BAKERY  
MEATS & FISH  
COOKERY DEMOS  
& LOTS MORE!

Market Hill & St Peter's, Sudbury  
**From 11am to 6pm - Sunday 14th June**  
**FREE ENTRY • FREE PARKING • FREE TASTERS**

enquiries@tasteofsudbury.co.uk  
www.tasteofsudbury.co.uk

Contact Jane Hatton  
01787 468634



# CHURCH SERVICES: JUNE & JULY 2015

Nayland, Wiston, Leavenheath, Stoke by Nayland & Polstead

Date	Time	Venue	Service	Priest / Leader	Time	Venue	Service	Priest / Leader
31 <sup>st</sup> May <i>Trinity Sunday</i>	10.30 am	Hadleigh	Deanery Serv.	Very Revd M. Thrower	4.00pm	Stoke	Messy Ch.	Val and Team
7 <sup>th</sup> June <i>Trinity 1</i>	8.00am	Stoke	HC 2	Revd John Fowler	11.00am	Polstead	HC 2	Jim Sephton
	9.30am	Nayland	HC 1	Revd Jackie Sephton	6.30pm	Stoke	Evensong	Jane Addis
	10.00am	Leavenheath	First Sunday	Revd Val Armstrong				
14 <sup>th</sup> June <i>Trinity 2</i>	9.30am	Leavenheath	HC 1	Revd Val Armstrong	11.00am	Stoke	HC 2	J Addis/Revd J Sephton
	9.30am	Nayland	Café Church	Congregation	11.00am	Wiston	MW	Derek Johns
	11.00am	Polstead	MW	Congregation	6.30pm	Nayland	Evensong	K Hunt/D Pryor
21 <sup>st</sup> June <i>Trinity 3</i>	9.30am	Leavenheath	MP	David Rowe	11.00am	Stoke	MP	David Rowe
	9.30am	Nayland	HC 1	Revd Jackie Sephton	11.00am	Wiston	HC1tr	Revd Jackie Sephton
	11.00am	Polstead	HC by ext	J Sephton/V Watling	6.30pm	Leavenheath	Ev Praise	The Team
28 <sup>th</sup> June <i>Trinity 4</i>	8.00am	Nayland	HC 2	Revd John Fowler	11.00am	Polstead	FS	Revd Val Armstrong
	9.30am	Leavenheath	HC 2	Revd Val Armstrong	11.00am	Stoke	HC 1	Revd John Fowler
	9.30am	Nayland	MP	K Hunt/D Pryor	4.00pm	Stoke	Messy Ch.	Val and Team
					6.30pm	Wiston	Evensong	K Hunt/D Pryor
5 <sup>th</sup> July <i>Trinity 5</i>	8.00am	Stoke	HC 2	Revd John Fowler	3pm	Polstead	Gospel Oak	Jim Sephton
	9.30am	Nayland	HC 1	Revd Jackie Sephton	6.30pm	Stoke	Evensong	Jane Addis/June Smith/ A Sedgewick
	10.00am	Leavenheath	First Sunday	Revd Val Armstrong				
12 <sup>th</sup> July <i>Trinity 6</i>	9.30am	Leavenheath	HC 1	Revd Val Armstrong	11.00am	Stoke	HC 2	Revd Val Armstrong
	9.30am	Nayland	Café Church	Congregation	11.00am	Wiston	MW	D Pryor/K Hunt/D Johns
	11.00am	Polstead	MW	Congregation	6.30pm	Nayland	Evensong	K Hunt/D Pryor
19 <sup>th</sup> July <i>Trinity 7</i>	9.30am	Leavenheath	MP	David Rowe	11.00am	Stoke	MP	David Rowe
	9.30am	Nayland	HC 1	Revd Jackie Sephton	11.00am	Wiston	HC by ext	K Hunt/D Pryor
	11.00am	Polstead	HC 1	J Sephton/V Watling	6.30pm	L'heath VH	Ev Praise	The Team
26 <sup>th</sup> July <i>Trinity 8</i>	8.00am	Nayland	HC 2	Revd John Fowler	11.00am	Polstead	FS	Revd Jackie Sephton
	9.30am	Leavenheath	HC 2	Revd Val Armstrong	11.00am	Stoke	HC 1	Revd John Fowler
	9.30am	Nayland	MP	K Hunt/D Pryor	6.30pm	Wiston	Evensong	K Hunt/D Pryor
2 <sup>nd</sup> August <i>Trinity 9</i>	8.00am	Stoke	HC 2	TBA	11.00am	Polstead	HC 2	TBA
	9.30am	Nayland	HC 1	TBA	6.30pm	Stoke	Evensong	TBA
	10.00am	Leavenheath	First Sunday	TBA				

Key: FS : Family Service, FC : Family Communion, HC 1 / 2 : Holy Communion 1 or 2, PC : Parish Communion, MP : Morning Prayer, MW : Morning Worship, EP : Evening Prayer, Ev Praise : Evening Praise, B : Baptism, *Worship leaders are subject to change.*

## Weekday Services and Groups

Bible Study	18 Laburnum Way ( <i>Rita Dibble 262580</i> ): Mondays 11am 1st & 15th June, 6th & 20th July, 3rd & 17th August
Parkers Way	Communion: Tuesdays 10.15am 16th June, 21st July & 18th August ( <i>3<sup>rd</sup> Tuesday of month</i> )
Parkers Way	Prayer & Praise Service: Wednesdays 3pm 3rd June, 1st July & 5th August ( <i>1<sup>st</sup> Wednesday of month</i> )
Nayland House	Holy Communion: Every Wednesday 10.45am
Messy Church	Sundays 4pm until 6pm: 31st May, 28th June (no meeting in July) at St Mary's Stoke by Nayland ( <i>last Sunday of month</i> )

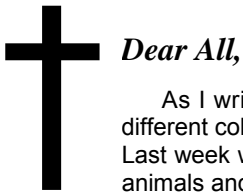
## Other Dates for your Diary

Monday 25 May	Nayland Church Fete 2-4pm Webb;s Meadow
Thurs 4 June	Archdeacon's Visitation Service, St Mary's Hadleigh, 7.30pm
Friday 18th Sept	Harvest Supper in Nayland Village Hall
Sunday 27th Sept	Wiston Harvest Festival at 6.30pm
Sunday 4th October	Nayland Harvest Festival at 9.30am

## Weekday Prayer

<u>Monday</u>		
Morning Prayer	9.00 am	Nayland
<u>Tuesday</u>		
Morning Prayer	8.30 am	Leavenheath
<u>Wednesday</u>		
Morning Prayer	9.00 am	Polstead
<u>Thursday</u>		
Morning Prayer	9.00 am	Stoke





*Dear All,*

As I write this the sun is shining after a rain shower; everything in the countryside is looking fresh, with all the different colours of the new growth demonstrating the power of God to sustain us from year to year.

Last week we undertook the annual Rogation Procession from Nayland to Wiston, when we blessed the crops and animals and gave thanks for all God's goodness to us.

Now that we are into the period of interregnum, and with plans afoot for the re-organization of our deanery, we look forward to a time of potentially major changes, when it will become even more important for our church communities to pull together to shape and safeguard our future.

Tomorrow is the Institution and Induction of Rev. Adrian Mason in his new benefice in South Lincolnshire. I am sure that all will join with me in wishing him well in this next stage in his spiritual life; we will miss him greatly.

By the time this appears in print the Nayland Church Fete will have been and gone; let's hope for the usual wonderful team spirit from our community, a spirit that keeps our church and village community such a vibrant one.

Every blessing,

*David Pryor, Lay Elder*

## Church News



### Christian Aid Week: 10-16 May

A large thank you to all the collectors and the donors for all your support - more details in the next issue.

*Nicola Thorogood Local Organiser*

## REV ADRIAN MASON

A large congregation attended the final service conducted by priest-in-charge, the Rev Adrian Mason, at St Mary's, Stoke by Nayland on April 26.

After the service Rev Mason and his wife Maria were presented with an engraved decanter, glasses, flowers and a cheque.

The couple are moving to south Lincolnshire to be closer to Mrs Mason's parents.

Rev Mason was priest-in-charge of the Leavenheath, Nayland, Polstead, Stoke by Nayland and Wiston benefice for four years.

## THANK YOU

Please accept our grateful thanks for all your good wishes for our move to Lincolnshire, to all of you who attended the final service in Stoke by Nayland Church on April 26 and for your great generosity with the wonderful gifts presented to us at that service. We have been deeply moved by the multitude of gifts and good wishes that you have showered upon us. Thank you indeed.

Thank you also for the privilege of being able to work amongst you all for the past four years. It has been a joy and I am immensely grateful for all the help and support you have given me and the ongoing support so many of you show to the five churches.

As I have said before, if you are in Lincolnshire, do look us up.

As ever, with every blessing,

*Adrian and Maria Mason*

## PARISHES' PLANNED REORGANISATION

Plans have been announced for the reorganisation of 22 parishes that make up the Church of England's Hadleigh Deanery. Rural Dean The Very Reverend Martin Thrower addressed an audience of parish council members and deanery synod representatives gathered in St Mary's on 18 May to present details about how the 2014 Deanery Plan will be implemented.

At the heart of this reorganisation is the introduction of new 'clusters' of parishes to replace the present parish benefice structure.

The parishes of Stoke-by-Nayland, Leavenheath, Polstead, Nayland and Wiston, led until recently by Revd Adrian Mason, will be joined by Higham and Stratford St Mary to make up one of four new clusters announced. Nayland rectory is to be sold and the new cluster based at Stoke.

Radical change has been forced on the deanery by a continuing fall in numbers of stipendiary clergy – now 4.5 full time equivalent posts for all 22 parishes – and a financial crisis. Postholders will work as a team although some may not be full-time appointments

or ordained. Local worship will be planned and overseen by a cluster priest, with preaching and teaching organised across the deanery to maximise resources.

Sunday worship will also change.

Revd Thrower described the current pattern as 'unrealistic and unsustainable'. From January 2016 one cluster communion service will be offered on the fourth Sunday of each month; a fifth Sunday deanery communion for all parishes will be offered in Hadleigh. Parishes are free to offer other forms of worship at other times. Parish governance – how Parochial Church Councils function – is to be simplified and streamlined. In a parallel move, clergy administration is to be centred on Hadleigh as the first point of contact for arranging baptisms, weddings, and funerals.

Taken together, these sweeping changes are described as a Minster Model. Revd Thrower stressed that the Plan was 'not about closing churches' but developing a new Diocesan Growth Strategy, empowering every church to take a positive new approach within 'one missionary unit'. Final decisions on approving the reorganisation will be sought at the Hadleigh Deanery Synod meeting on 17 June.

## CHURCH CONTACT DETAILS ON PAGE 43

*The Benefice is now in interregnum. Either call Nicola, the benefice administrator, the clergy named on page 43 or the Rural Dean, Revd Martin Thrower at St Mary's Hadleigh on 01473 822218 email: office@stmaryshadleigh.co.uk*

## FROM THE REGISTERS

### FUNERALS

Iris Gladwell  
(Margaret) Bethan Jervois  
Jean Basham

### BAPTISM

Poppy Mitchell



## WISTON CHURCH PORCH BOOKS

Fancy a walk on the footpath in Wiston past St Mary's Church? Do call into the church porch and browse through the selection of second-hand books - autobiographies, cookery, children's, fiction, and non-fiction.

# Ela's Little Flower

Florist in Wissington  
inviting everyone who needs flowers.

Wedding flowers  
Babies Birth  
Funeral Tributes  
Bouquets  
Baskets  
Flower Displays  
Weekly Flowers  
Arrangements for:  
Offices, Halls, Receptions, Churches



Friendly prices. First order 15% off.  
We deliver flowers to your door.  
Open Monday to Saturday 10am-5pm



Just order by phone

**01206 262462**

or mobile **07783 305250**

# Nayland Farmers' Market

Saturday June 13<sup>th</sup>

Saturday July 11<sup>th</sup>

9.30am – 1pm

Nayland Village Hall

It is summer time and we've got fresh strawberries joining us from Lindsey & beautiful cut flowers from Leavenheath plus organic home grown herbs, delicious chocolate and lemon tarts, locally grown vegetables, award winning wine, amazing jams, chutneys and jellies and lots more.

Please support your fantastic, thriving, local Farmers' Market in Nayland Village Hall on the second Saturday of every month.

Further info from Justine Paul on 07704 627973

[www.suffolkmarketevents.co.uk](http://www.suffolkmarketevents.co.uk)

[justine@suffolkmarketevents.co.uk](mailto:justine@suffolkmarketevents.co.uk)



Saturday Schools | Holiday workshops  
Birthday Parties | After School Clubs  
Summer Schools | Preschool Classes

act, sing, dance, perform!

## Theatricool in Nayland

Theatricool weekday classes - Mondays at Church Hall, Bear Street

Diddly Dance and Diddly Drama fun classes for accompanied tots aged 2-4. 2.10 - 3.15pm.

After school drama club great fun, games and activities for ages 5-10. 3.30-4.30pm

Theatricool summer school 3rd - 7th August

Week of performing arts, fun and games and new friends. Ages 4-16 years. 10am - 4pm each day.

£140 for the week. Littlegarth School, Horkesley Park.

Theatricool Saturday School - starts in September at Littlegarth School. FREE taster session available!

[www.theatricool.co.uk](http://www.theatricool.co.uk)

07736 713909

[sally@theatricool.co.uk](mailto:sally@theatricool.co.uk)



## A.D.J Design

## Architectural Services

### Planning & Building Regulations

Architectural plans drawn for new homes, extensions, loft conversions & alterations.

Extensive local portfolio of design and building projects.

Ashlaburn  
Coach Road  
Gt Horkesley  
Colchester  
Essex  
CO6 4AS

**Tel: 01206 271163**

[www.adjdesign.co.uk](http://www.adjdesign.co.uk)





## ANCHOR INN NAYLAND



### Save 10% when you dine at the Anchor

Enjoy delicious, locally sourced food, fine wines and cask ales at the pub by the Stour.

Quote code: **ANCH10** when booking to claim your discount\*

**Book now: 01206 262313**

\*Offer valid to 24th July 2015. Advance booking only. Cannot be used in conjunction with any other offer or promotion.

The Anchor Inn, 26 Court Street, Nayland, CO6 4JL

**www.anchornayland.co.uk**

MARY - ANNE  
MORRISON  
M I L L I N E R Y



01206 262391 | 07850 571879  
www.mamorrison.co.uk | hats@mamorrison.co.uk

## BURES IT

### FRIENDLY COMPUTER & MAC REPAIR IN BURES.

We are a friendly computer repair company based in Nayland Road Bures. We are open 6 days a week, and can normally come and see your machine the same day, for no extra charge.

We can also help with a whole number of other problems for more information call us on 07817980538.



COMPUTER &  
MAC REPAIRS



COMPUTER  
UPGRADES



COMPUTER  
CHECK UP



VIRUS  
REMOVAL

### SPECIAL OFFER!

SUPER QUICK DESKTOP PC  
CORE i3 £325  
3 YEAR WARRANTY



01787 227351 - 07817 980538 - info@bures.co

## Matthew Douglas

### Independent Financial Advisers

*Do you need your savings to work harder?  
Is your income sustainable for the long term?  
Are your assets risk controlled?  
Are they tax efficient?  
Would you like some confidential advice?*

**"Money matters made Simple"**

Telephone, e-mail or just drop in to arrange a free, no obligation consultation with a professionally qualified independent adviser.

**4 Church Mews  
High Street  
Nayland CO6 4JF**

Telephone: 01206 265904

Email: info@matthewdouglas.co.uk

Website: www.matthewdouglas.co.uk

Matthew Douglas Limited is authorised and regulated by the Financial Conduct Authority.



**We are very busy in your area**

**Boydens**  
SALES & LETTINGS

## The final piece...

- Chartered surveyors & estate agents
- Residential & commercial
- Lettings & management
- Block management
- Suitably qualified and experienced staff
- Local knowledge
- Unique service - available to all who seek professional guidance
- Four generations family business building on over 150 years' in the Colchester area.

**Call or visit us at:**  
**Aston House**  
**57-59 Crouch Street**  
**Colchester CO3 3EY**  
**Tel: 01206 762244**

Branches in:  
 Braintree, Kelvedon, Sudbury  
 Frinton-on-Sea & Ipswich



**www.boydens.co.uk**

RICS AEA NAEA ARMA

## Harris Building Co. Ltd

### Building Contractors & Designers



Established Suffolk Building Company with many years experience working on country houses and cottages

Preparation and submission of drawings for Planning and Listed Building applications.

Wide ranging general building and maintenance particularly to Historic and Listed Buildings.

Bespoke joinery for new and refurbishment projects.

**Tel: 01206 263632**

  
 Member No. GO33

**Good Move**

## MAKE IT A GOOD MOVE



### ASK US FOR ADVICE ON MOVING

- UK door to door
- Storage services
- Commercial archive storage
- European door to door
- Commercial office moves
- Packing materials included

**Good Move Removals & Storage**  
 Unit 1, Holly Lodge, Holly Lane, Great Horkesley, Colchester CO6 4AW

**Colchester 01206 272780**  
**Ipswich 01473 288110**

Email [guy@goodmove.org.uk](mailto:guy@goodmove.org.uk) Website [www.goodmove.org.uk](http://www.goodmove.org.uk)

## WHITTLES

CHARTERED ACCOUNTANTS



### Count on us to help you with your tax returns

Business advisory, tax, audit and accounting services for companies, charities, trusts and individuals

Century House South, North Station Road, Colchester CO1 1RE  
 Telephone: **01206 762200**

15 High Street, West Mersea CO5 8QA  
 Telephone: **01206 385049**

**www.whittles.co.uk**



## SMALL ADVERT COLUMN

Nayland and Wiston residents may place free adverts for items valued at under £50. Items £50 and over incur a charge of £5.

### FOR SALE:

**GIRL'S BIKE** - Sweetie Apollo 12" Pink. Age 2-4.

Stabilisers. Bag on front, doll carrier on back. Hardly used, excellent condition. £30. Tel: 01206 262331

**BOSCH ELECTRIC 'ART EASY TRIM' STRIMMER**

£11. In good condition. Tel: 01206 262566

### ROMAN CATHOLIC CHURCH

Nayland and Wiston are part of the Hadleigh Parish

**Father Peter Brett 01473 372703**

[www.sudburywithhadleigh.net](http://www.sudburywithhadleigh.net)

NAYLAND WITH WISSINGTON COMMUNITY TIMES

### TO ADVERTISE CONTACT:

Lorraine Brooks 262807 [Lorraine.nayland@btinternet.com](mailto:Lorraine.nayland@btinternet.com)

### FREE:

#### BAGS OF SHREDDED PAPER

Available from Matthew Douglas, 4 Church Mews (opposite Post Office) between 9-5, or telephone 265904.

### WANTED:

**WANTED CHIPBOARD FURNITURE** any condition will collect. 01787 211975

**POSTAGE STAMPS** for East Anglian Air Ambulance. Please leave them in box in the Post Office.

**UNWANTED BICYCLES** for Re-cycle Bicycles to Africa, [www.re-cycle.org](http://www.re-cycle.org). Contact Iris Sebba 262632 or take them to the Re-Cycle Depot: Unit 8 The Grove Estate, Colchester Road, Wormingford CO6 3AJ Tel: 01206 617 865

**BATTERY RECYCLING** – box in the Post Office.

## Hunnaball of Colchester

Family Funeral Service



York House, 41 Mersea Road  
Colchester, CO2 7QT

01206 760049

[www.hunnaball.co.uk](http://www.hunnaball.co.uk)



## Personalised Playing Cards

**Spingold**  
Design & Print



### Ideal for:

- ♠ Special Events
- ♥ Corporate Gifts
- ♣ Birthday Presents
- ♦ Promotional Material
- ♠ Wedding Favours/Gifts



### Personalised Backs

**1** custom image on the card backs, with standard playing card faces.

### Personalised Fronts & Backs

**54** different images on the faces of the cards, plus a back image.

Number of Packs	Single Sided Personalisation	Double Sided Personalisation
1 Pack (per pack)	£18.00	£33.00
2 Packs (per pack)	£13.20	£20.40
5 Packs (per pack)	£9.00	£10.80

*Please enquire for details on larger quantities, orders of 100+ packs can have a bespoke printed box too!*

[www.spingold.co.uk](http://www.spingold.co.uk)

**01206 262751**

Spingold Design & Print Ltd.  
The Studio | Harpers Hill | Nayland  
Colchester | Essex | CO6 4NT

## ST. JAMES' CHURCH HALL HIRE CHARGES

<b>Monday – Friday</b> (Hourly Rates)	£5.00
<b>MINIMUM CHARGE</b> (2 hours)	£10.00
<b>Weekends</b> (Hourly Rates)	£6.00
<b>MINIMUM CHARGE</b> (2 hours)	£12.00

During Winter: Heating Vouchers @ £1 each

Bookings: online at [www.naylandandwiston.net](http://www.naylandandwiston.net)  
or Anna Boon 262780 [annaboone@btinternet.com](mailto:annaboone@btinternet.com)  
Collect Key from 43 Bear Street

## NAYLAND VILLAGE HALL HIRE CHARGES (from 1 April 2014)

Inc: Hall, Stage, Kitchen & Bar - Changing Rooms: £20 extra per session  
Licence to provide Alcohol £20 extra

Sunday – Friday Hourly Rates	Residents	Non Residents
9am – 6pm (April-Sept)	£10.00	£13.50
9am-6pm (Oct-March)	£11.00	£15.50
6pm-midnight (April-Sept)	£11.00	£15.50
6pm-midnight (Oct-March)	£12.00	£17.50

**MINIMUM HIRE: 2 HOURS RESIDENTS – 3 HOURS NON RESIDENTS**

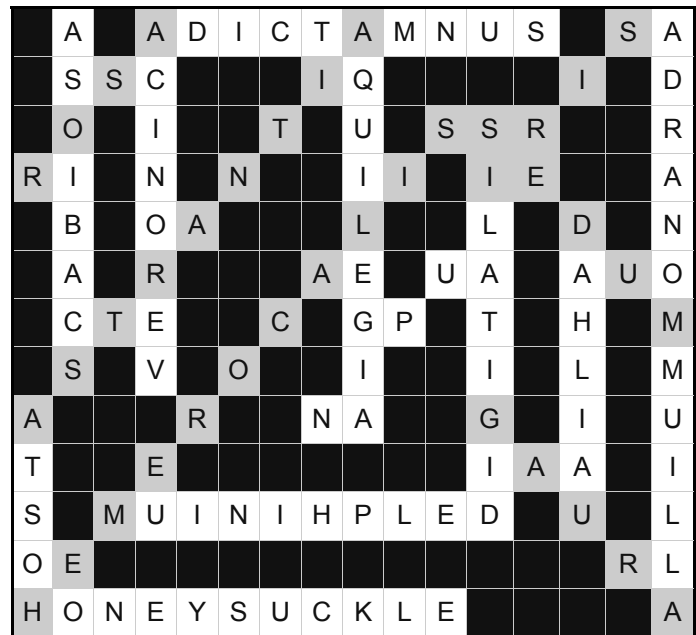
### Saturday

Daytime until 6pm	Hourly Rates as above	
Evening 6pm-midnight	£140.00	£210.00
All day until 6pm	£90.00	£110.00
All day until 6pm with playing field	£140.00	£160.00
Playing Field only	£50.00	£50.00
Playing Field & Changing Rooms	£70.00	£70.00
Meeting Room only (3 hour session)	£15.00	£21.00

Reduced terms for use of the hall over a period can be negotiated  
with the Treasurer, Peter Mann on 262830

Bookings: online at [www.naylandandwiston.net](http://www.naylandandwiston.net) or  
**Sara Strover 07748 953175 [naylandvillagehall@yahoo.co.uk](mailto:naylandvillagehall@yahoo.co.uk)**

## WORDSEARCH



## ANAGRAM SOLUTION

1 Aquilegia, 2 Honeysuckle, 3 Lavender, 4 Buddleia,  
5 Scabious, 6 Rosemary, 7 Foxglove, 8 Wallflower,  
9 Cornflower, 10 Birdsfoot Trefoil, 11 Heather, 12 Ceonothus,  
13 Stinging Nettle



**CHEAPER  
HEATING OIL  
& COAL**

*Together We Save on*  
***horkesleybuyers.com***  
Join us and start saving on your fuel

## SCHOOL TERM DATES 2015

May half term: 25 May - 29 May

Summer term begins: 14 April, term ends: 21 July

## BUS TIMETABLES Service 84 (NS = Not Saturdays, Sch = Schooldays only, SHol = Saturdays & weekdays during School Holidays only)

From September 2014

Sudbury – Newton Green – Assington – Leavenheath – Stoke by Nayland – Nayland – Gt Horkesley – General Hospital – Colchester

Monday to Saturday	NS	Sch	SHol					Sch	SHol		
Sudbury, Tesco	.....	.....	.....	0845	1015	1145	1315	.....	1445	.....	1615
Sudbury, Bus Station	0650	0705	0720	0910	1040	1210	1340	1410	1505	1550	1640
Nayland, Doctors Surgery	0731	0742	0759	0949	1119	1249	1419	1449	1549	1629	1719
Colchester General Hospital	0744	.....	0814	1004	1134	1304	1424	1504	1604	1644	.....
Colchester Bus Station	0755	0815	0825	1015	1145	1315	1445	1515	1616	1655	.....
Norman Way Schools	.....	0825	.....	.....	.....	.....	.....	.....	.....	.....	1840
Monday to Saturday	Sch	NS	Sch					SHol	Sch		
Norman Way Schools	.....	.....	.....	.....	.....	.....	.....	.....	.....	1545	.....
Colchester Stanwell Street	0735	0755	0755	0850	1020	1150	1320	1510	1510	1610	1735
St Helena School	.....	.....	.....	.....	.....	.....	.....	.....	1520	.....	.....
Colchester General Hospital	0748	.....	0808	0903	1033	1203	1333	1523	1533	1623	1748
Nayland, Doctors Surgery	0801	0819	.....	0916	1046	1216	1346	1536	1546	1636	1801
Thomas Gainsborough School	0840	.....	0840	.....	.....	.....	.....	.....	.....	.....	.....
Sudbury, Bus Station	0845	0855	0845	0955	1125	1255	1425	1615	1625	1715	1840
Sudbury, Bus Station	0900	0900	.....	1000	1150	1300	1430	.....	.....	1720	.....
Sudbury, Tesco	0915	0915	.....	1015	1145	1315	1445	.....	.....	1735	.....

For more information: **Chambers Coaches**

Tel: 01787 – 375360

[www.chamberscoaches.co.uk](http://www.chamberscoaches.co.uk)



Mobile Library  
Post Office  
Doctors Surgery

Parkers Way  
Primary School  
Home School Association  
Nayland Playgroup  
Woodland Corner  
Primary School Choir  
Nayland Toddler Group  
Village Hall  
Church Hall  
Royal British Legion  
Royal British Legion (Women's)  
Womens Institute  
Over 60's Club  
Bowls Club  
Nayland Art Club  
Horticultural Society  
Conservation Society  
1st Scouts & Cubs  
1st Nayland Guides & Brownies  
Village Players  
Nayland Choir  
Transition Nayland  
First Response  
Friends of St. James Church  
Friends of Wiston Church  
Chambers Buses  
Local Police  
Police Safer Neighbourhood Team  
Babergh District Council  
District Councillor  
Suffolk County Councillor  
Roman Catholic Church

Saturdays 4-weekly alternating between: High Street & Parkers Way. *See page 27 for details*  
High Street Tel: 262210 Early Closing on Wednesday  
93 Bear Street Tel: 262202 (*out of hours emergency 01206-578070 or NHS 111*)  
Surgery hours: Mon-Fri 8am-6pm (*telephone service until 6.30*) [www.northhillsurgery.co.uk](http://www.northhillsurgery.co.uk)  
Scheme Manager: Ellen Salmon, 15 Samford Close, Holbrook Tel 01473 328458  
Head Teacher: Raegan Delaney Tel: 262348  
Sec: Ronnie Egan 01787 210046 [rontone01@sky.com](mailto:rontone01@sky.com), Chair: Lindsey Regan 264019  
Manager: Sue Clarke 263054 <http://woodlandcornernayland.blogspot.com>  
Administrator: Caroline Keep 263054 e-mail: [woodlandcorner@outlook.com](mailto:woodlandcorner@outlook.com)  
Jayne Kennedy 263207  
Michelle Plumb 264116 Alice Palmer 263629 - Fridays 9.30-11.30am Village Hall  
Bookings: Sara Strover 07748 953175 Caretaker: Mrs Y. Spooner 262691  
Bookings: Anna Boon 262780. [stjameschurchhall@yahoo.com](mailto:stjameschurchhall@yahoo.com)  
Hon Sec. Andrew Gowen 262534  
Sec: Kath Hunt 262014 - 2nd Tuesday each month Church Hall 2.30pm  
Sec: Lorna Rumsey 01787 211975 - 3rd Monday each month 7.30pm Village Hall  
Sec: Barbara Smith 501942 President: Mrs Eva Rolfe 263151 - 2nd Thursday each month  
Sec: Mrs Eva Rolfe 263151  
Daphne Berry 262641 Liz Thorne 262664 - Wednesdays 2-4pm (*term times*)  
Sec: Lorraine Brooks 262807 Chair: Trevor Smy 262022  
Hon Sec Andora Carver 262970 Chair: Mr. J Alexander 262676  
Mr M Macbeth 01473 827239  
Julie Mansfield 01787 211554 Tuesdays 5.30-7pm  
Chair: Gale Scott 262061 Membership Sec: Jill Fernandez [jillyfern@gmail.com](mailto:jillyfern@gmail.com)  
Sec: Cathy Allen [cathyallen@talktalk.net](mailto:cathyallen@talktalk.net) Ch: Rob Swan 242319 [rob.swan@wbergholt.onmicrosoft.com](mailto:rob.swan@wbergholt.onmicrosoft.com)  
Will Hitchcock 263169 - [info@transitionnayland.co.uk](mailto:info@transitionnayland.co.uk) - [www.transitionnayland.co.uk](http://www.transitionnayland.co.uk)  
Karen Elliott 263233 [kazelli@btinternet.com](mailto:kazelli@btinternet.com)  
Chair: Alan Edwards 262800  
Sec: Caroline Ross-Stewart 263701 [wistonfriends@gmail.com](mailto:wistonfriends@gmail.com) Ch: Bill Starling 262397 [billstarling@hotmail.com](mailto:billstarling@hotmail.com)  
Tel: 01787 227233 [www.chamberscoaches.co.uk](http://www.chamberscoaches.co.uk)  
PCSO 3108 Mandy Coleman & PC 1455 Matt Paisley Tel: 101 (*non-emergency*) number  
*Babergh East SNT* email: [babergeast.snt@suffolk.pnn.police.uk](mailto:babergeast.snt@suffolk.pnn.police.uk)  
Tel: 01473 822801 (Main Switchboard) Corks Lane, Hadleigh, IP7 6SJ [www.babergh.gov.uk](http://www.babergh.gov.uk)  
Melanie Barrett [melanie.barrett@babergh.gov.uk](mailto:melanie.barrett@babergh.gov.uk) 01787 211126  
James Finch [James.Finch@suffolk.gov.uk](mailto:James.Finch@suffolk.gov.uk) 263649 Rose Cottage, 5 Fen Street CO6 4HT  
Father Peter Brett 01473 372703 [www.sudburywithhadleigh.net](http://www.sudburywithhadleigh.net)

PARISH COUNCIL	COMMUNITY COUNCIL	VILLAGE HALL COMMITTEE
<p><b>Clerk:</b> Debbie Hattrell 01787 880935 <a href="mailto:pc@naylandwithwissington.suffolk.gov.uk">pc@naylandwithwissington.suffolk.gov.uk</a> Charis, Upsher Green, Gt Waldingfield CO10 0TT</p> <p><b>Chairman</b> Mary George <b>Vice Chairman</b> -</p> <p><b>Councillors:</b> Gerald Battye, Patricia Fuller, Ian Harris, Graham Walker,</p> <p><b>Parish Recorder</b> Wendy Sparrow <b>Tree Warden</b> Terry Bannister <b>Footpath Warden</b> Sally Bartrum</p> <p><i>Meetings: 7.30pm second Wednesday of month in the Village Hall Committee Room</i> <i>Minutes: PC notice board in High Street</i></p>	<p><b>Chairman</b> Neil Barbrook 263619 <b>Secretary</b> Lorraine Brooks <b>President</b> Ken Willingale <b>Vice-President</b> Bryan Smith <b>Vice-Chairman</b> Colin Ramsell <b>Treasurer</b> Iain Wright <b>Executive:</b> Tricia Hall, Julie Clark, <b>Individual:</b> Claire Buller, Vicki Sargent, John Parsonson, Colin Moule</p> <p><i>Meetings: 1 July, 2 September, 28 October, 11 January 2016 8pm (Exec 7.30) Church Hall</i></p>	<p><b>Chairman:</b> Mr Iain Wright 263657 <b>Secretary</b> Chris Thompson <b>Treasurer</b> Peter Mann <b>Vice Chairman</b> Mike Hunter <b>Bookings Sec.</b> Sara Strover</p> <p><b>Committee:</b> Nick Moriarty Mary Knapp</p> <p><i>Meetings: 7.30pm first Monday every month (except Bank Holidays: second Monday) 8.30pm Village Hall</i></p>
CHURCH	<p><b>Organists:</b> St James: James Finch St Mary's: Catherine Johns <b>St James Choir:</b> James Finch 262993 <b>Church Wardens</b> St James: James Carver 262970 <a href="mailto:carversnayland@tiscali.co.uk">carversnayland@tiscali.co.uk</a> or Kathy Hunt 262014 St Mary's: Nicola Thorogood 262453 <a href="mailto:thorogood.nicola@gmail.com">thorogood.nicola@gmail.com</a> or Gerald Knox 262224 <b>Deanery Synod Reps</b> St James: James Carver 262970 Margaret Geater St Mary's: Rosemary Knox 262224, John Branfield 845107</p>	<p><b>Parochial Church Council</b> <u>St James</u> Lay Chairman: John Baker, Treasurer: James Carver 262970, Sec: Michael George 07557 998325 25 Laburnum Way CO6 4LG <a href="mailto:68michaelgeorge@gmail.com">68michaelgeorge@gmail.com</a> Com: Chris Hunt, David Pryor, Margaret Geater, Alex Murrison, Jane Gordon-Chauvet, Roy Evans, Chris Hunt, Rod Pawsey <u>St Mary's</u> Treasurer: Gerald Knox 262224, Secretary: John Branfield 845107 Tom Gibbons, George &amp; Fiona Storey, Suki Cohen, Derek Johns, Tibby Mimpriss</p>

## COMMUNITY WEBSITE - [www.naylandandwiston.net](http://www.naylandandwiston.net)

Webmaster: Graham W Griffiths – Tel: 262132 - e-mail: [webmaster@naylandandwiston.net](mailto:webmaster@naylandandwiston.net)

## VILLAGE DIARY

<b>May</b>		
25th	Nayland Church Fete 2-4pm Webb's Meadow	
26th	Luncheon Club for over 60s: Church Hall <i>page 3 &amp; 22</i>	
<b>June</b>		
1st	Village Hall Management Committee AGM 8pm Village Hall <i>page 26 &amp; 43</i>	
10th	HortSoc coach outing to Savill Garden & Thames Cruise Windsor <i>page 20</i>	
10th	Parish Council Meeting 7.30pm Village Hall Committee Room <i>page 43</i>	
11th	Over 60s: meeting at Parker's Way Community Centre 2.30pm <i>page 22</i>	
13th	Farmers' Market: 9.30am-1pm Village Hall <i>page 38</i>	
14th	Conservation Society: Open Gardens 2pm-6pm <i>page 9 &amp; 21</i>	
15th	Women's Institute: <i>A Walk Around Nayland, part three</i> with Wendy Sparrow <i>page 19</i>	
17th	Art Group: outing to Munnings Gallery Dedham <i>page 22</i>	
17th	Community Council: Street Fayre planning meeting 7.30pm at 107 Bear Street <i>page 6 &amp; 8</i>	
20th	HSA: School Summer Fete 11am-1pm <i>page 11</i>	
23rd	Conservation Society: Dr Carenza Lewis <i>results of the Follow Up Test it Dig</i> 7.30pm Village Hall <i>page 13 &amp; 21</i>	
26th	Village Cinema: <i>'The Theory of Everything'</i> 8pm doors open 7.30pm Village Hall <i>page 10 &amp; 19</i>	
27th	Summer Craft Fair 10am-4pm Village Hall <i>page 18</i>	
28th	Country Music Club: <i>'Kenny Paul'</i> 7pm for 7.30 Village Hall <i>page 11</i>	
30th	Luncheon Club for over 60s: Church Hall <i>page 3 &amp; 22</i>	
30th	Conservation Society: Professor Jules Pretty <i>'The Edge of Distinction'</i> 7.40 for 8pm Village Hall <i>page 9 &amp; 21</i>	
<b>July</b>		
1st	Community Council: meeting 8pm Church Hall ( <i>Exec 7.30</i> ) <i>page 7 &amp; 43</i>	
2nd	Village Players: Drinks at the Anchor Inn	
3rd	Bingo Night Charity Fundraiser Village Hall 7pm <i>page 9</i>	
6th	Village Hall Management Committee AGM 8pm Village Hall <i>page 26 &amp; 43</i>	
8th	Parish Council Meeting 7.30pm Village Hall Committee Room <i>page 43</i>	
11th	Farmers' Market: 9.30am-1pm Village Hall <i>page 38</i>	
12th	Village Players: Auditions for <i>The Woman in White</i> 5pm Church Hall <i>page 9</i>	
14th	School Summer Concert Village Hall	
15th	Art Group: Afternoon Tea at Newton <i>page 22</i>	
15th	Royal British Legion: Outing to Bletchley Park <i>page 11 &amp; 19</i>	
15th	Village Players: Auditions for <i>The Woman in White</i> 7.30pm Church Hall <i>page 9</i>	
17th	HortSoc: Summer Garden Party 7.30pm <i>page 10 &amp; 20</i>	
19th	Community Council: <b>Picnic in the Park</b> 1pm-5pm Webb's Meadow <i>page 6 &amp; 8</i>	
20th	Women's Institute: <i>The Perennial Mr Potter</i> Bryan Thurlow <i>page 19</i>	
20th	Royal British Legion: meeting Anchor Inn 7.30 for 8pm <i>page 19</i>	
21st	Luncheon Club for over 60s: Summer Tea Party at Longwood Barn <i>page 3 &amp; 22</i>	
24th	Village Cinema: <i>'The Second Best Exotic Marigold Hotel'</i> 8pm doors open 7.30pm Village Hall <i>page 10 &amp; 19</i>	
26th	Country Music Club: <i>'Declan Gaynor'</i> 7pm for 7.30 Village Hall <i>page 11</i>	
<b>August</b>		
8th	HortSoc: Nayland Flower Show 2pm-4pm <i>page 12, 18 &amp; 20</i>	
15th	Farmers' Market: 9.30am-1pm Village Hall	
23rd	Country Music Club: <i>'Brian's Country'</i> 7pm for 7.30 Village Hall <i>page 11</i>	
<b>Forward Planner</b>	6th September	HortSoc: Outing to Hatfield House & Gardens <i>page 13 &amp; 20</i>
	18th September	Nayland Harvest Supper <i>page 36</i>
	21st September	Friends of Wiston Church: Fun ladies Tennis Tournament & Lunch <i>page 13 &amp; 24</i>
	2nd October	Community Council: Village Quiz <i>page 7</i>
	21st October	Village Lunch <i>page 23</i>

Thank you for your contributions – if you have any ideas or suggestions please contact the Editor

**FINAL DEADLINE FOR RECEIPT OF COPY IN THE AUGUST ISSUE IS 5PM ON: 20TH JULY**

CONTACT		ADVERTISING COSTS		
<p style="text-align: center;">The Editor: Lorraine Brooks Tel: 262807 E-mail: <a href="mailto:naylandcc@yahoo.co.uk">naylandcc@yahoo.co.uk</a> <b><a href="http://www.naylandcommunitycouncil.org.uk">www.naylandcommunitycouncil.org.uk</a></b> Copy can be posted in the Community Times Box in Nayland Post Office</p> <p>To ensure contributions can be accommodated in the space available it is advisable that space for promotion or large articles is reserved with the editor.</p>		Six issues for the Price of Five – get one advert <b>FREE</b>		
		Size	Dimensions	Cost
		$\frac{1}{16}$ page portrait	6.3cm H x 4.4cm W	£5
		$\frac{1}{8}$ page landscape	6.3cm H x 9cm W	£10
		$\frac{1}{4}$ page portrait	13cm H x 9cm W	£17.50
		$\frac{1}{4}$ page landscape	6.2cm H x 18.4cm W	£17.50

All monies raised from the Community Times go to good causes within the community. The Editor and Community Council may not be held responsible for the accuracy of articles or any other claims made by any advertiser in the Community Times.

The Editor and Community Council reserves the right to alter, shorten or refuse any items submitted for publication.

The Community Times is produced and distributed by the **Nayland-with-Wissington Community Council**

Registered Charity No.304926

The Community Times can also be viewed / downloaded from the Nayland Community Website: **[www.naylandandwiston.net](http://www.naylandandwiston.net)**