



# NAYLAND WITH WISSINGTON

## COMMUNITY TIMES

YOUR LOCAL MAGAZINE FOR NEWS AND VIEWS

\* \* \* SALC 'Newsletter of the Year' runner up 2013 \* \* \*

### PLAYGROUP CELEBRATES 40 YEARS

More than 150 children, parents and staff celebrated Nayland Playgroup's 40th anniversary with a tea party at Woodland Corner on May 10.

Many faces from the past joined current playgroup members to enjoy tea and cakes as well as fun activities.

A huge birthday cake took pride of place and a display of photographs from the past 40 years proved popular as parents saw pictures of themselves when they attended.

There was also a visit from Peppa Pig and commemorative money boxes were given to existing members.

Chair Rachel Hitchcock paid tribute to staff, the committee and everyone who has supported the group over the years including the local community who sponsored raffle prizes and helped towards the party.

Manager Sue Clarke, celebrating 20 years with the group, was given a special mention and presented with a gift.

Started in 1974 meeting three mornings a week in the village hall, the playgroup now has its own purpose-built premises in the primary school grounds and also offers breakfast, after school and holiday clubs to local children.

### CALENDAR & COMMUNITY TIMES DISPLAY

Villagers were treated to a dual display in Nayland church hall on Bank Holiday Monday when entries in the 2015 calendar competition were on show together with copies of the Community Times dating back 25 years.

Although there were fewer photographs this year those submitted included several unusual and original compositions and judge Geoff Meadowcroft was pleased with their overall standard.

Winners were: David Negus, Sandra Gibbons, Hazel Gardiner, Graham Wiles, Kathrine Maguire, Mike Hunter, Andora Carver, Nigel Evans, Drina May, Lorraine Brooks and Wendy Sparrow. See pages 32 & 33 for further details and photographs.

Alongside the calendar competition entries there was a display featuring every copy of the Community Times since it started in 1989.

Keith Worricker was the magazine's first editor until August 2002 when it was taken over by Sarah Fogarty. Current editor Lorraine Brooks has produced the newsletter for ten years.

From small beginnings the Community Times has gradually developed and now with plenty of advertising makes a sizeable profit for Community Council funds.

In 2013 it was named runner-up in SALC's Newsletter of the Year competition.

### NEW PERMISSIVE FOOTPATH

A new permissive footpath linking Nayland to Stoke by Nayland has been officially opened.

The route is a continuation of the Stoke Road footpath at Nayland and runs inside the hedges of the next three fields before crossing the road and joining the existing path to Stoke.

Initiated by Nayland with Wissington Conservation Society, the £2,000 project was financed by a 75 per cent grant from the Dedham Vale Sustainable Development Fund with the society contributing the remaining £500.

Villagers from both parishes gathered to watch as Hector Wykes-Sneyd, land agent for the Tendring Hall Estate, cut the tape on April 3.

Mr Wykes-Sneyd, who was deputising for the estate owner Emily Holden, said he had been a bit sceptical when the link was first suggested but was very pleased it was now complete and hoped it would be well used by walkers. He thanked Andora Carver, secretary of the conservation society, for her part in the project.

Mrs Carver said: "The creation of this permissive path will be of great benefit to the local community as well as to visitors and would not have been possible without the generosity of the Tendring Hall Estate and the Dedham Vale AONB Project."

Among those attending the ceremony were the chairmen of Nayland and Stoke by Nayland parish councils, Mary George and Una Oakes, and footpath wardens Sally Bartrum and Alan Shrosbery.

**JUNE 2014**

**No: 149**

### SPECIAL INTEREST

Nayland Open Gardens

Nayland Flower Show

Scarecrow Competition

School Summer Fete

Memory Lane Tea Dance

Cinema: *'The Invisible Woman'*

Conservation Soc. Anniversary

Picnic in the Park

Village Players' Auditions

### THIS ISSUE

Playgroup's 40th Anniversary

Parish Assembly

Village Players  
*'The Miracle Worker'*

Over 60s Luncheon Club

Country Music Club

### REGULARS

Community Council

Parish Council Report

Village Hall Meetings

Society News

Church Services

Garden Notes

Village History

### PLUS

Dates for your Diary

Local Information

Contact Details

(on back pages)

View the CT in colour on the **COMMUNITY WEBSITE: [www.naylandandwiston.net](http://www.naylandandwiston.net)**

# NAYLAND WITH WISSINGTON PARISH COUNCIL

## Planning Meeting: 9th April 2014

### POLICE REPORT

Mary George said there had been one incident in the last month; vandalism at Fairfield playing field. James Finch said there had been a robbery at the Rose and Crown in Great Horkesley.

### DISTRICT COUNCILLOR'S REPORT

Richard Cave drew councillor's attention to articles in the town and parish newsletter; council housing and consultation for a local validation list which aims to enhance the planning process.

### COUNTY COUNCILLOR'S REPORT

James Finch reported on; SCC's response to Ofsted findings, campaign to tackle under-aged smoking, New Anglia Strategic Economic Plan, Suffolk Police outperforms other forces in recent domestic-abuse inspection.

He advised vehicle activated speed signs, at a cost of £3,000, can be purchased by individual parish councils or shared between parishes.

### PARISH COUNCIL

Mary George said there has been no interest shown in the parish councillor vacancy. It was agreed to extend the deadline until after the Parish Assembly.

### PLANNING

Reviewing recent planning applications Mary George said consent had been granted at 78 Bear Street to pollard a Weeping Willow tree and at 20 Court Street to reduce the crown of an Oak tree covered by Tree Protection Order.

Councillors had no objections to an application for the pollarding of a Plane tree, subject of a TPO, at 100 Bear Street or to listed building consent at 52-54 Bear Street for replacement of existing rear windows, doors and screens.

Discussing an application at St George House, Wissington Uplands for the erection of a single-storey rear and side extension, erection of a two bay cart-lodge style extension to existing detached garage, construction of outdoor swimming pool with detached two-storey pool building to provide ancillary accommodation, pool plant room, changing facilities and associated works councillors had concerns regarding the pool house and would make an objection to aspects of that building but no objections to other aspects of the applications.

Councillors felt an application at Nags Corner for the erection of detached building for the purposes of offices together with car parking, landscaping, external lighting and signage and construction of new vehicular and pedestrian access off Harpers Hill would have a significant impact on the village. Concerns were raised regarding the size and height of the new office building, that some windows would affect the privacy of neighbours, landscaping, the safety of pedestrian access and vehicular access. Councillors agreed to look at previous plans before submitting their recommendations.

Further comments requested on the Horkesley Park planning appeal have been submitted.

Councillors should forward their comments for submission on the consultation for a new Local Validation List to Mary George by 8th May.

### STREET LIGHTING

Councillors were concerned that the 2013 phase of upgrading the street lights had not been completed. The Clerk and James Finch would query this with SCC.

James Finch said he had requested suggestions to make the street light in Newlands Lane more effective but asked the PC to remind SCC.

### HIGHWAYS

Richard Cave said road sweeping to all 30mph roads should have been completed but problems were encountered in some areas, such as Newlands Lane where access is difficult and sections of roads where cars are parked. He added a 'rural response team' are available to tackle this type of situation if the

PC reports a problem. Newlands Lane was cleaned last week.

Babergh have advised charges will be made in future for new street signs; this excludes replacement signs. Mary George added that it will soon be the 5th anniversary of the missing T junction sign at Bear/Birch/Mill Street.

Councillors have found the new online system for reporting pot holes to Highways to be effective; it was agreed to report potholes as they see them in future and to notify the clerk.

### OPEN SPACES

Mary George said repairs following recent vandalism to fencing at Fairfield recreation ground will cost £40.

The playground equipment project committee are submitting applications for grants. The clerk agreed to supply a copy of the PC accounts to accompany them.

Parking on Fairfield recreation ground remained a problem despite the school requesting parents do not use the area; a further request will be made to the school. Access to the site is needed for funerals and visitors to the burial ground so fencing is not an option.

SCC will be reinstating Caley Green following work on tree damage caused by the St Jude storm. The PC contractors will not mow the grass in the area until this is completed.

The annual tree inspection by John Moore is scheduled for 14th April. Trees by Wiston Church will be included.

### FOOTPATHS

The footpath warden reminded Essex CC regarding the poor state of the non-slip strips and railings on the bridge at Popp's Piece and steps at Horkesley Lock. The footpath warden had reported fallen sign post at Star Alley to SCC, their response was work would be carried out 'when resources allow'.

Mary George said the new permissive footpath alongside the B1087 linking Nayland with Stoke has been opened. This provides a much safer route for walkers. Thanks are due to the Conservation Society for their hard work with this project.

### ALLOTMENTS

There is currently one person on the waiting list for a plot.

The annual meeting with allotment holders will be held on Monday 19th May at 7.30pm in the Church Hall.

Rosemary Knox would make arrangements for judging this year's allotment competition. She requested that numbers are fixed to the allotment gates. There was discussion about the parking area during winter and the hedge. Tom Gardiner suggested raising this at the allotment holders meeting.

### VILLAGE HALL

Rosemary Knox reported on a situation relating to the 1997 Lease and changes in the VH constitution. In order to avoid legal expenses the PC were asked to consider either varying the lease or formally confirming that the VH should continue to conduct themselves in accordance with a Charity Commission document.

The Youth Club is not currently running. There have been insufficient volunteers to provide the levels of supervision required at their sessions. Community Action Suffolk has been asked to mediate between the VHMC and the Youth Club Leader.

### Annual Parish Assembly

Flyers promoting the Parish Assembly on 12th May will be distributed. Printed reports will be arranged on the display boards. Verbal reports by councillors should be very brief and should focus only on immediately local issues. The meeting will conclude with recognition of the Community Council's Babergh Achievement Award.

### In Brief:

An emergency repair had been carried out to the tap at the burial ground; Babergh have stated it is not their responsibility.

Rosemary Knox, the temporary designated PC representative on the Community Council, will attend their next meeting on 7th May.

# NAYLAND WITH WISSINGTON PARISH COUNCIL

## Annual Meeting: 14th May 2014

Mary George was re-elected as chair and Matthew Pescott Smith as vice-chair. Representatives and committee members were agreed. A volunteer to join the Community Council did not come forward.

Mary George said there has been no interest shown in the parish councillor vacancy. It was agreed to extend the deadline until the next meeting.

Councillors to agreed to have a break from a full meeting in August. A meeting may be called to discuss urgent matters.

### PUBLIC FORUM

Mike Hunter and Lorraine Brooks felt involving children from the school to award red, orange or green stickers for the way cars were parked was a positive attempt in helping tackle the problems with parking in Bear Street.

A volunteer is needed to provide an independent report on parish council meetings to be published in the Community Times. Meetings are held on the second Wednesday of each month but the task could be shared. If anyone can help please contact Lorraine Brooks [lorraine.nayland@btinternet.com](mailto:lorraine.nayland@btinternet.com)

The history of the Community Council, 1966 to present, is being collated. If anyone can help with information, memories, photographs, etc please contact Lorraine Brooks on 262807 or [lorraine.nayland@btinternet.com](mailto:lorraine.nayland@btinternet.com)

### POLICE REPORT

Mary George said there had been two incidents in the last month; attempted burglary in Bear Street and power tools stolen from outbuilding on Harpers Hill.

### DISTRICT COUNCILLOR'S REPORT

Richard Cave drew councillor's attention to the broadening of criteria for granting section 106 funds. This now included certain maintenance projects which could benefit parish councils.

### PLANNING

Reviewing recent planning applications Mary George said consent had been granted at 100 Bear Street to pollard a Plane tree, subject of a TPO. An application at 33 Bear Street for the erection of a two-storey extension, internal alterations and a loft conversion had been withdrawn by the applicant.

Discussing an application at Ricklands Farm, Wissington for the erection of a two-storey detached dwelling following demolition of existing dwelling councillors had no objection to the demolition of the existing dwelling or re-siting a new dwelling further back on the site but they did object to the design of the proposed replacement dwelling.

### HIGHWAYS

Highways will be repairing Lade wall near Candy Lane. Potholes in Bear Street and Cawley Road/Burs Road junction have been reported.

Graham Walker said the potholes reported in Wiston had been filled but he had concerns regarding the standard of work by contractors.

Complaints have been received from residents regarding the poor state of the green in Stoke Road. Babergh carried out the work to hedges but have not reinstated the green. Richard Cave agreed to investigate at Babergh.

Will Hitchcock said the posts supporting railings on the Socket Alley bridge in Fen Street were rotten. Highways will be asked if this is their responsibility.

### OPEN SPACES

Mary George said the annual tree inspection had identified the need for tree maintenance. A chestnut tree on Webb's Meadow is diseased and requires felling, there is a lot of storm damage and pruning needed. Three itemised quotes will be obtained.

Gerry Battye said clearance of storm damaged trees on Caley Green had caused damage to the grass on Caley Green and despite remedial work the contractors are able to cut the grass. The situation will be monitored.

Mary George said grass cutting contractors had reported broken glass and stones covering Fairfield recreation ground

had required careful clearance prior to mowing. Councillors said the incidents of vandalism were a drain on council funds. This incident will be reported to the police.

Parking on Fairfield recreation ground remains a problem; a further request was made to the school to ask parents not use the area. The diocese, who have shared ownership of the drive, will be erecting a sign at the entrance.

### VILLAGE HALL

Rosemary Knox there was nothing to report on the Youth Club which was not currently running.

Following a request by Neil Barbrook it was agreed the new Table Tennis group could keep their table in the council's storage at the village hall.

### COMMUNITY COUNCIL

A volunteer is needed to become permanent designated PC representative on the CC executive committee. Rosemary Knox is the named representative in the interim.

Mary George said the Community Council has awarded the Parish Council a grant of £560 to pay off a loan taken with them in the 1970s.

### STREET LIGHTING

Following councillors concerns that the 2013 phase of upgrading the street lights had not been carried out the clerk has resubmitted the order.

Gerry Battye reported tape around a post on Heycroft Way following impact damage.

### FOOTPATHS

Essex CC will replace the non-slip strips and railings on the bridge at Popp's Piece and steps at Horkesley Lock.

### ALLOTMENTS

The annual meeting with allotment holders will be held on Monday 19th May.

Rosemary Knox had been unable to make contact with the judge to make arrangements for judging this year's allotment competition.

### ITEMS RAISED AT THE PARISH ASSEMBLY

Councillors will look into how Emergency Planning has been organised in other local villages, such as Bures and Lavenham, to gauge how a plan could be implemented in Nayland.

### IN BRIEF:

Pigeon Investment Management, who have bought Westwood Park and the greenhouses and land previously owned by Buntings in Great Horkesley, have requested an opportunity to discuss their proposals for the site at London Road with councillors. They will be asked to send information on their plans prior to a meeting.

A letter from a resident raising concerns about the trees in the school wood will be raised with the school.

## Are these reports on Parish Council meetings of interest to you?

You may be unaware the reports are an independent record of discussions at the meetings - they are not produced by the parish council

### Could you help ?

In order for them to continue a volunteer  
(or volunteers to share the task)

is needed to provide an independent report to be published in the Community Times. The meetings are held on the second Wednesday of each month at 7.30pm. If you can help please contact Lorraine Brooks on [lorraine.nayland@btinternet.com](mailto:lorraine.nayland@btinternet.com) or 262807



## Office Matters

Comprehensive  
**WORDPROCESSING**  
Service

(Inhouse cover also provided)

Please contact

**Margarette**

on

**01473 822860** or

**07863 560945**

to discuss your particular  
requirement

[margarette@officematters.org](mailto:margarette@officematters.org)

**Professional and Confidential**

## INDOOR TENNIS COURT

at Newtons Farm,  
Wissington, Nr Nayland

"PAY AND PLAY"

NO MEMBERSHIP FEE

PARKING & TOILET FACILITIES

Further

details:

**01206**

**262453**

[www.indoortenniscourt.co.uk](http://www.indoortenniscourt.co.uk)



## Learn to drive

with your local driving school



**Rob Austin D.O.T A.D.I.**

Fully qualified

12 years experience

Dual controlled car

Learn at your own pace

1st 2 hour lesson £25

£19 per hour there after

For more information or to book  
lessons call Rob on:

**01206 262106**

or: **07946 085338**

## TOWN PRINTS

**General  
Picture Framing**

Also a selection of  
antique engravings  
of Colchester and District.

Foster Jones  
Longwood Cottage,  
Fen Street, Nayland,  
CO6 4HT

**Tel: 01206 262483**

## D S Clarke

*Building Services*

For professional - high quality work

General building work including:-

Extensions - Renovations - Brickwork

Landscaping - Roofing - Kitchens - Tiling

Plastering - Carpentry - Decorating etc

For a free, no obligation estimate,  
contact David Clarke on:

**Tel: 01787 227943**

**Mb: 07867 851 137**

[dsclarkebuilding@yahoo.co.uk](mailto:dsclarkebuilding@yahoo.co.uk)

7 Claypits Ave, Bures, CO8 5DA

## Lower Dairy Farm

Traditionally Reared

**BEEF**

Free Range Pork

Wild Venison

Preserves & Chutneys



Lower Dairy Farm Shop

Water Lane, Little Horkesley

CO6 4JS Tel: 01206 262314

[www.lowerdairyfarm.co.uk](http://www.lowerdairyfarm.co.uk)

## Fix-A-Lock

24 HOUR LOCKSMITH -

Wooden and UPVC doors

ALL WINDOW/DOOR REPAIRS -

handles, hinges, mechanisms, etc

REPLACEMENT SEALED UNITS

UPVC DOOR &

WINDOW SPECIALIST

BURGLARY REPAIRS

CRB CHECKED



**Ted Blanchette**

**M: 07836 551 032**

E: [tedblanchette@tiscali.co.uk](mailto:tedblanchette@tiscali.co.uk)

## Stour Valley Landscapes

*Gardening*

*Fencing*

*Landscaping*

*Tree & Hedge work*

*Handyman jobs*

*For a local, friendly &  
reliable service:*

**Tel: 01206 263629**

**Mob: 07801 430751**

## TRG PEST CONTROL

Rabbits, Moles, Rats,

Mice, Wasps, etc

Efficient and

Economical Service

For Further

information call

**Terry Gowing**

**Tel: 01206 322776**

**Mobile: 07990 954192**

Colchester's Premier Roofing Specialist



Established  
over 20  
years

FLAT ROOFING - TILING & SLATING  
New Roofs & Repairs - Chimney Work  
- Leadwork

An Established Local Family Business  
QUALITY WORKMANSHIP GUARANTEED  
FREE ESTIMATES & ADVICE

For Quality, Reliability & Service Please Call

**01206 272453**

MOBILE 07970 016234

5 Brook Cottages, Boxted, Colchester CO4 5TW

## Country Cars Private Hire

*Personal & Professional Service*

*Polstead Based*

**Local & Long  
Distance**

*Airports - Theatres  
Weddings - Hospitals*



Contact Dave Howard

**01206 262196**

**07767 076976**

## Computer Care

**"NEW" HOUSECALL REPAIR SERVICE**

**COMPUTER VIRUS REMOVED!!**

**BY V-EXTERMINATOR LTD SINCE 2003**

**NOW £45.00 WITH FIRST HOUR INCLUDED !!**

**TEL: 01787 370397**

## Evolve LANDSCAPES

Landscape design & build

- › Landscape Design
- › Construction work
- › Paving / driveways / patios / paths
- › Fencing / decking / garden walls
- › Pruning / hedge cutting
- › Tree felling / clearance
- › Regular garden maintenance



T: 01206 263813 M: 07841 625358

E: [info@evolve-landscapes.co.uk](mailto:info@evolve-landscapes.co.uk)

[www.evolve-landscapes.co.uk](http://www.evolve-landscapes.co.uk)

# P.S. DAY Flooring Specialist

Over 35 years experience

**FREE ESTIMATES  
PLANNING & COLLECTION SERVICE**

**Tel: 01787 828237  
Mob: 07903 409 052**

NAYLAND WITH WISSINGTON COMMUNITY TIMES



So Much More Than a Dance Class  
No partners required  
Any age & ability  
All are very welcome

**"Strictly" style Dance-a-cise  
Classes**

**Nayland Village Hall**

every Wednesday morning

spaces are limited - to reserve yours

**Call Janet on  
07506 350 455**

classes also held in:

- Capel St Mary
- East Bergholt
- Hadleigh
- Nayland
- Stratford St Mary

janet@fundancing.co.uk  
www.fundancing.co.uk



## Nayland Private Hire

**Airport & Long Distance  
Six seater executive travel**



*Satellite navigation  
Air conditioning  
Leather interior  
Traffic master  
Advanced bookings advised*

**01206 262 049 or 07979 640 040**

## Mike Freeman's Window Cleaning Residential and Commercial



For an honest, fully  
insured, experienced  
window cleaning  
service, please call  
**Mike: 01206 503814  
or 07590 396781**

Facia's, Gutters, Frames, Cladding - all undertaken

32 Maidenburgh Street, Colchester CO1 1UB

## DAWN DALE

### BEAUTY & RELAXATION THERAPY

THATCHERS COTTAGE • SCOTLAND STREET • STOKE BY NAYLAND

**OFFERING: MANICURE INC GELCOLOR BY OPI,  
PEDICURE, WAXING, AROMATHERAPY,  
BODY TREATMENTS, FACIALS, EYE TREAT-  
MENTS, MASSAGE  
LADIES ONLY**

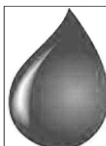
**OPEN MON-SAT & UNTIL 9PM TUE & THU**

**GIFT VOUCHERS AVAILABLE**

**PLEASE PHONE DAWN:**

**01206 262 118**

dawncdale@gmail.com



## STOURVALLEY

**HEATING & DOMESTIC SERVICES LTD**

- OIL CENTRALHEATING INSTALLATION & MAINTENANCE
- COMMISSIONING
- HOT WATER STORAGE INSTALLATION
- UNDERFLOOR HEATING INSTALLATION
- WATER SOFTENER INSTALLATION
- FULL BATHROOM DESIGN & INSTALLATION
- DOMESTIC PLUMBING SERVICES

Local experienced established registered installer  
For advice or a free estimate call MARK WARREN  
on Tel 01473 312047 or Mobile 07968 586613



## SHORT COURSES at ASSINGTON MILL

Beekeeping for beginners  
Jam, jellies & juice-making  
Willow plant supports.  
Birds of Prey, working with  
Hen keeping in your garden  
Chain-sawing for amateurs  
Clay ovens - how to make one  
Bricklaying for amateurs  
Plumbing basics for amateurs  
Photography: nature & landscape  
Ballroom dancing for novices  
Wooden spoon-carving

Bread-making  
Foraging for food  
Wild game butchery  
Dog psychology  
Tortoise ownership  
Natural Skin Care  
Fruit tree pruning  
Coracle making  
Celtic drawing  
Stained glass  
Silver clay jewellery  
Sheep for Smallholders

Fly Fishing  
Cyder-making  
Scything  
Mosaic  
Badgers  
Upholstery  
Storytelling  
Hedgelaying  
Felt-making  
Signwriting  
Pig-keeping  
Calligraphy

Contact Anne Holden: **01787 229955**  
info@assingtonmill.com www.assingtonmill.com

## MAKING YOUR WILL

I offer a home visit service for clients wishing to make their wills, lasting powers of attorney or advance decisions (to refuse medical treatment). As a retired solicitor I help my clients make well planned arrangements (including providing witnesses to ensure legal acceptance) at a very competitive price.

Please call 01206 263420

or email me at: [trevordodwell@aol.com](mailto:trevordodwell@aol.com)

**www.thewillbusiness.com**



## COMMUNITY COUNCIL REPORT

Meeting: 7th May 2014

Chairman: Neil Barbrook 263045

Neil Barbrook welcomed members to the meeting.

### MATTERS ARISING

**Executive Committee:** Neil Barbrook said further volunteers to join the CC executive would be welcome and there will be vacancy for Treasurer next year. He thanked Colin Ramsell for agreeing to take the position of Vice Chairman. Members were asked to encourage others to join.

**Fundraising Activities:** Organisation of the monthly Farmers Market has changed hands. They include their own free raffle (a ticket is given for each purchase) so it is not known whether selling CC raffle tickets would be welcome. We will review next meeting.

Other ideas for fundraising would be welcome.

**Babergh Achievement Award:** Jenny Smith said the awards evening had been very pleasant. The CC's award will be unveiled at the Parish Assembly; the glass award will be placed in the Village Hall trophy cabinet and the framed certificate displayed on the wall.

Neil congratulated all those who have contributed to the CC over the years in gaining this award.

### TREASURER'S REPORT

Income included: Community Times £1,340, Calendar £105. Grants included: Village Hall £1,000, Nayland Choir £500. Grants agreed but not yet paid include: Conservation Society Book £500 and Dig £500, Parish Council Playground Project £1,000. The Community Council's unencumbered assets are £16,788.02.

A loan was made to the Parish Council many years ago from which the CC derives just 0.5% interest a year and they pay off the capital at just 5% a year. It was agreed the outstanding £560 should be written off in the form of a grant to the PC.

**COMMUNITY TIMES:** Lorraine Brooks said a volunteer is needed to attend Parish Council meetings and write the report for the Community Times. The job could be shared. Lorraine will not be able to continue doing this.

As part of the CT 25th anniversary celebrations there was a display of all back issues, refreshments and display of CC activities at the Calendar Photo competition on 5th May. It had been a very pleasant afternoon with a steady stream of visitors. Thanks to the calendar team and Denise Drury for their help.

It was agreed to have 2 pairs of A4 pages in colour print (costing approx £100) for the October issue.

**VILLAGE CALENDAR:** Lorraine Brooks said the Calendar photo competition display was held on 5th May. The calendar is now being put together and scheduled to go to print as usual in June, it will be on sale from 2nd August. Twelve sponsors have agreed to support the calendar.

Framed enlarged prints of photos featured in past calendars are available to be hung in The village hall. They were produced to promote that enlarged unframed A4 prints can be purchased for £10.

### FORTHCOMING ACTIVITIES

**Picnic in the park - Monday 25th August:** Iain Wright is leading. It was felt opening with the duck race helped attract attendance.

**Fun Village Quiz - Friday 3rd October:** Rachel Hitchcock is leading and welcomes ideas. Members thought more 'fun' rounds could be added. Ideas included: identifying objects in a sock, a taste round (identifying the flavour of crisps or chocolate), a sound round, identifying artefacts.

**Bonfire Night - Wednesday 5th November:** Dynamic Fireworks' half day pyrotechnics training course at Mersea is on Sunday 14th September. Tony Boon has volunteered to attend, another volunteer would be welcome.

Neil will liaise with Bryan regarding ordering the fireworks and with Claire for necklaces/sparklers. Claire will lead on the BBQ and hot chocolate, Jenny & Tricia on mulled wine. More

helpers are required especially for the gate.

It was noted that the bonfire site was not completely cleared and this it has led residents to think they can put their rubbish on the bonfire site - this is not permitted.

**Christmas Fayre - Sunday 7th December 12-2pm:** Neil Barbrook is co-ordinator. It was noted £1 is charged to visit Santa, this doesn't cover the cost but it is a community activity and won't be increased. There was a shortage of stalls by village groups last year. Neil suggested the CC consider what else the CC could do to raise funds. The CC will sell hot chocolate.

**Street Fayre - July 2016:** Claire Buller agreed to co-ordinate this event which will celebrate the 50th anniversary of the Community Council.

### AOB

**Village Hall Garden:** The CC missed participating in the Village Hall garden morning. We will tend our section of the garden on Saturday 7th June at 9am.

**Parish Assembly:** Neil Barbrook agreed to attend the Parish Assembly on 12th May to answer any questions and say a few words if required. Bryan, Jenny and Colin would also attend.

**Community Council Records:** The whereabouts of historic paperwork relating to the CC was not known by those present. Lorraine, Bryan and Claire will investigate. Lorraine hopes to collate some information and highlights for the CCs 50th anniversary.

### SOCIETY REPORTS

**Art Group:** Colin Ramsell said their visit to Kersey Mill didn't quite go as expected but a 'plan B' resulted in an enjoyable outing. They will visit a studio at Woodbridge on 18th June and on 23rd July will enjoy cream tea at Newton Green.

**Conservation Society:** John Partridge said their grant applications for a second test pit dig have been successful and would take place in September. The new permissive footpath between Nayland and Stoke has been opened. It was commented that this is very useful to residents.

**Woodland Corner:** Rachel Hitchcock reported a positive year was highlighted at their AGM, they were hoping for good weather for their 40th anniversary celebration on Saturday and the anniversary is the theme for summer activities.

**Playground Project:** Rachel Hitchcock reported grant applications have been submitted and they are hopeful of achieving the £25,000 target this summer. An exciting range of equipment for a wider age range of children than are currently catered for is proposed. Fingers are now crossed that their hard work for the lottery bid pays off.

**HortSoc:** Lorraine Brooks said their spring events; a talk on 'Through the Year with a Horticultural Photographer', the Spring Show and the AGM & Fun Quiz had been very successful. The Morning Market, a sale of plants, cakes, preserves, refreshments etc, is on 17th May. They have a coach outing to Kew Gardens on 11th June and summer garden party on 11th July. The Scarecrow and Hanging Basket Competitions are on 12th & 25th July and the Flower Show on 2nd August.

**Village Players:** Jenny Smith said their last play *The Miracle Worker* had been successful and they are appreciative of audiences support. They are having a little break from performances but have some social activities planned including a guided walk with Chris Hunt. Auditions for the pantomime 'Jack and the Beanstalk', directed by Nick Moriarty, will be held in July.

**Choir:** Ian McKay said rehearsals are going well for the second concert of their anniversary year, on 28th June in the village hall, followed by a barbecue. They hope to see some new faces in the audience and good weather!

**Transition Nayland:** Julie Wooding said they had attended Hadleigh Fair, they had a successful spring solstice walk and a

summer solstice walk is planned.

**Table Tennis Group:** Neil Barbrook reported there are 12 members of this new light-hearted group - more would be welcome. They meet on Mondays at 2-3.30pm at the Village Hall. They borrow the Youth Club's table, a second table would be available if it can be stored at the hall. Claire said the CC's storage area may be suitable. It was also suggested that an outdoor table tennis table may be a useful facility - Neil will investigate.

**New Book Club:** Neil Barbrook said there was a new book club run by Stephanie Deering. The first book had been Daphne du Maurier's *Rebecca*, the next an Agatha Christie novel.

**DATE OF NEXT MEETING:** will be **Wednesday 2 July** in the Church Hall at 8pm with Exec at 7.30pm. Meetings for 2014/15: Wednesday 3 September, Wednesday 29 October, Monday 12 January 2015 and Wednesday 4th March 2015 the AGM.

## The history of the Community Council,

1966 to present, is being collated to celebrate its 50th Anniversary.

Do you have any information that could be included?

We would love to hear from you with information, memories, or if you have any documents or photographs which we could copy please contact Lorraine Brooks on 262807 or [lorraine.nayland@btinternet.com](mailto:lorraine.nayland@btinternet.com)

# Picnic in the Park



**1pm till 5pm on Webb's Meadow**  
(next to the Village Hall)

The Community Council invites you and your family to enjoy a lazy Monday afternoon with friends and neighbours and see the Famous Duck Race in Fen Street at 1pm (gather at 12.45, ducks £1 on the day)

**Food:** Bring your garden chairs, rugs, picnic and drinks for lunch together in the open air. Tasty BBQ and delicious Pimms available.

**Music:** Open mic and piano provided so don't forget your guitar, harmonica, banjo or anything else you can carry and play or sing a song!

Musicians aged 8 to 80 will play from classical, pop and rock so all tastes catered for. Other bookings to be announced...

**Sunshine:** Here's hoping it's a sunny day as last year but (apart from the Duck Race!) the event will take place in the Village Hall in case of bad weather.

~~~We look forward to seeing you there~~~





# NAYLAND WITH WISSINGTON PARISH COUNCIL

## Annual Parish Assembly: 12th May 2014

Mrs Mary George, who had taken over as Chair the previous October from Gerry Battye, welcomed about 35 members of the public to the meeting in the Village Hall. County Councillor James Finch, District Councillor Richard Cave and seven Parish Councillors were present.

### POLICE REPORT:

PCSO Mandy Coleman reported there had been 38 crimes last year, 6 of which had been detected. These included 6 burglaries, 6 cases of criminal damage, 18 thefts mainly from dwellings and motor vehicles, one drugs case and 3 assaults. To try and improve school parking problems PCSO Coleman said she would be putting coloured stickers on cars parked badly, an idea to involve children and their parents. Mr Amos asked why offenders were not prosecuted, PCSO Coleman said that not all poor parking was an offence and handing out tickets didn't work, the same applied to speeding. Mrs Munson thought one day there would be an accident on Anchor Bridge where cars parked. Mrs George said the Council had had site meetings with Highways and police but it was up to individual drivers. PCSO Coleman said the Anchor were trying to sort out the parking.

### COUNTY COUNCILLOR:

James Finch's full report can be found on *page 34*.

Mrs Wade asked who was responsible for Parkers Way residents, some were left with no lighting or heating for 36 hours in recent power cuts. Mr Finch said this was a difficult area but the community shared responsibility with district and county councils, village life was about helping others. Richard Cave said that the district's proposed emergency plan should improve the situation.

Mr Finch believed that in the winter storms the emergency process had worked very well, roads were open within 24 hours although clearing up took longer. Mrs Stiles was concerned about the dangerous potholes in Fen Street, and Mr Finch said that Highways were aware of the problem.

### DISTRICT COUNCILLOR:

Richard Cave said Council Tax was not expected to be raised for the next two years. The amalgamation of Babergh and Mid Suffolk Councils was under way but the whole organisation had to change. They were putting their planning teams together and hoped to speed up planning applications. It was planned to install solar panels on over 2,000 council properties in the district in the energy saving programme and some Nayland properties could be affected. 80,000 households were being consulted about anticipated future demand for housing in the district.

### PARISH COUNCIL: FINANCES.

Mrs George said there had been a small increase of 1.9% in the parish precept element of Council Tax, representing 0.01% increase per household which was within national guidelines. Sources of income had reduced, partly because of reduced government grants. DeFRA grants for the allotment field had been halved and there was a 25% decrease in the parish grant from Babergh. Updating some street lights and turning them off at night had saved almost £500, despite increased charges. The next phase of new lights had been planned for 2013/14 but the contractors had not yet carried out the work. There had been unexpected expenditure due to several cases of criminal damage at the playing field; 2 trees in the Burial Ground had been lost in winter storms and had to be cleared, 6 others were pollarded. Following a tree specialist report, damaged trees on parish land will need attention this year. The County Council was responsible for trees on Caley Green, so there was no expense to the Parish for tree work next to the river.

### VILLAGE HALL:

Mrs George said the Management Committee was disappointed the Council did not transfer some of its income to the endowment fund. However, it does put £1,000 a year into a capital investment fund for the future and it can make grants for major items for the hall. Ten to 20% of the Council's

precept goes on the hall and playing field trees and grasscutting. It was still repaying £2,000 annually off long term loans towards the land and millennium extensions to the hall.

### LOVE CALEY WALSH TRUST:

Mrs Knox reminded the public that this charity provided an annual Christmas payment to Over 80s but there was no official way of finding out who they were. If anyone knew of any eligible residents, either living in their own homes or in a care home, would they please let her or the other trustees know.

### EMERGENCY PLANNING:

Mrs George and Mrs Fuller had attended a workshop at Babergh about emergency planning. Questions raised were: Could the parish identify its own risks, were there any volunteers like First Response, do we know where all the vulnerable people are around the village? If there was a major disaster in the area a formal plan was needed to set up a network with emergency services so that everyone could come together quickly. The plan would have to be made known to the whole community and a lot of input would be needed by the community.

Mr Finch said residents were good at looking after each other but Parkers Way and Nayland House needed close vigilance. The village was well served by the Fire Station but Mrs George pointed out that medieval houses burn quickly. We don't have serious flooding but this could change.

C Hunt said it was important to see what we already had. Mrs Munson, suggested supplying Parkers Way residents with gas fires and candles. Mrs George showed the meeting a helpful leaflet which could be fixed to the fridge. She said there would be funds for basic kit for the volunteers.

Mr Amos asked about sandbags. Mrs George said she had been told that they were known to be toxic waste and had to be properly disposed of. There are now other bags which store flat and absorb water but 16 bags are needed to protect one doorway.

Mr Gowen asked about the Parkers Way warden. Mr Finch said the warden was no longer resident but attended 2-3 hours a morning for 3 days a week, otherwise was contactable by telephone.

### PRESENTATION:

Mrs George thanked councillors for their support, including Mark Burbidge who had resigned in January, but she said one particular councillor needed rather more thanks. Gerry Battye had served as chairman for 25 years and had been a Councillor for 30 years, definitely above the call of duty. The other councillors were relieved that he had stayed on the back benches. He was presented with wine and a book and thanked the Council.

Mrs George appealed for applications for the Council vacancy which would be until the next election. She thanked the Clerk who had just returned after serious illness, the Tree and Footpath Wardens, Rachel Hitchcock and her group for the work they were doing on a scheme to update playground, the Village Hall Management Committee and Andrew Gowen who was no longer on the team but had looked after the finances so efficiently for many years. Graham Griffiths was thanked for running the Community Website which was 10 years old this year.

Lorraine Brooks, Secretary of the Community Council and Editor of the Community Times, was thanked for all her hard work and congratulated on being the runner up for the Suffolk Newsletter of the Year. However, as she is unable to continue attending Parish Council meetings to report for the Community Times and press, a volunteer is needed to do this.

The Community Council had received a Babergh Community Achievement Award for all their work for the parish for nearly 50 years. The award would be kept in the cabinet in the foyer of the Village Hall and the framed certificate displayed on the wall.

The Chairman of the Community Council, Neil Barbrook, thanked Mrs George and the Parish Council for all the work they do and asked for everyone's support for the Community Council's forthcoming events.



## BABERGH ACHIEVEMENT AWARDS: COMMUNITY COUNCIL



Jenny Smith, Tricia Hall and Claire Buller. They are seen photographed receiving the award from BDC chairman Nick Ridley and Robert Audley, chairman of sponsor Prolog.

Kate Lowe, Babergh communities officer, said: "The awards ceremony was a fantastic opportunity for us to say thank you to those who make an exceptional contribution to our district.

"The evening demonstrated how lucky we are to have so many outstanding groups and individuals that enrich our communities."

Clubs, village organisations and community helpers have been rewarded and recognised for their selfless service to others.

This year's Babergh Community Achievement Awards saw 20 winners congratulated and thanked for their contribution to community life at a ceremony at Stoke-by-Nayland Hotel.

The awards, run for 20 years, highlight the work of people and groups who make a difference by giving up their time for the benefit of their local schools and communities.

The Nayland with Wissington Community Council, made up of volunteers from the village who fundraise, give grants and support village events were represented at the ceremony by Bryan and



### PARISH COUNCIL: GERRY BATTYE

In recognition of his dedicated service for thirty years, 25 years of that as chairman, Mary George, the current chair, presented Gerry Battye with wine and a book by the artist Glenn Thomas at the parish assembly on 12 May.

Gerry remains a valued member of the Council but stepped down as Chairman at the September meeting.

### YOGA CLASSES

**Mondays 10am-11.30am**  
Stoke-By-Nayland Village Hall

For more details please contact

**Marianne Marshall** (BWY)

[marianmarshall@fastmail.fm](mailto:marianmarshall@fastmail.fm)

**01787 210323**

### A.J. Gardner Car Repairs

- Friendly reliable Service
- Repairs to cars and light vans, New or Old
- Very reasonable rates.
- M.O.T. preparation and repairs
- Servicing
- No V.A.T on Labour

Ricklands Farm, Corley Road, Wiston  
Tel 01206 262172 Mob 07970 421626

**JMAC INTERIORS**  
Specialist Painters & Decorators  
Est. 1997



- All Interior and Exterior Work Undertaken
- Specialist in Period & Listed Properties
- Wallpaper Hanging to the Highest Standards
- Restoration of Ornate Cornices & Ceiling Roses
- References Available
- Fully Insured



07778 031505 – 01787 224674  
[jmacinteriors@aol.com](mailto:jmacinteriors@aol.com)







## 1<sup>st</sup> NAYLAND SCOUTS



Are you aged 10½ to 14 years ?  
Would you like something to do on Thursday evenings?  
Why not come along to join the Scouts?



**Our activities include:**  
camping,  
hiking,  
canoeing,  
cooking on wood fires  
and stoves,  
map and compass,  
learning to tie knots,  
sleeping out in shelters  
made of natural materials,  
wildlife watching  
and much more...

We meet at the Scout hut  
at 7pm-9pm on  
Thursday evenings

For more information contact  
Malcolm on 01473 827239





Nayland Primary School HSA  
invites you to their

# Summer Ball

*at Le Talbooth, Dedham*  
*Friday 11th July 2014*

Reception Drinks  
Three Course Dinner  
Disco  
Auction & Grand Raffle  
Photographer  
£55 per person  
Arrival: 7.15pm Carriages: 12.30am  
Dress Formal/Black Tie

For more information contact:  
Emily 07891 502052  
or Lindsey 07960 637772

Sponsored by: GLADWINS FARM,  
JC BRADSHAW BUILDING SERVICES LTD  
and PUSH ENERGY

Thanks to: CHEWTON ROSE, XAV MARSEILLE, SPINGOLD,  
FUN AND GAMES, SIGNS MADE EASY,  
TALKING TABLES, CLARE FLOREST






Nayland & District  
Horticultural Society

## SCARECROW COMPETITION

Why not join the friendly rivalry?  
This is a fun competition.  
The family can work together.  
The whole community enjoys seeing  
these new residents popping up  
in front or back gardens and allotments.

**Winner receives £10**  
Entry costs just 10p  
Open to residents of Nayland & Wiston  
Scarecrow to be made by the entrant/s

Closing date for entries  
**Saturday 5th July**  
Judging takes place in situ on  
**Saturday 12th July**

Entry forms are available in the Show schedules  
or from the Post Office, Kerridges  
on [www.naylandhortsoc.org.uk/SummerShow](http://www.naylandhortsoc.org.uk/SummerShow)  
or from Lorraine 262807 or Trevor 262022.





# Nayland & District Horticultural Society CHILDREN'S & FAMILY'S CLASSES NAYLAND FLOWER SHOW

**Saturday 2nd August**  
2pm-5pm Nayland Village Hall

An animal or person made from vegetables and/or fruit  
'I grew this myself'  
Cardboard Creation  
Jar of named wild flowers  
Decorated cresshead  
Garden-on-a-plate  
Photo: 'I took this myself'  
Decorated fairy cakes



Entries in by 30 July. Children's classes are free to enter. Youngsters can also enter other classes for: Vegetables, Fruit, Flowers, Flower Arranging, Cookery, Preserves, Art, Craft & Photography  
*Show schedules available at local shops, Lorraine 262807 or [www.naylandhortsoc.org.uk](http://www.naylandhortsoc.org.uk)*



NAYLAND PRIMARY SCHOOL H&A

## Summer Fete

Saturday 21st June 2014  
11am-1pm

**TUCK SHOP • RAFFLE • BOUNCY CASTLE  
CROCKERY SMASH • TOMBOLA • STOCKS  
JEWELLERY • BOOKS • PLANTS  
ICE LOLLIES • BBQ & REFRESHMENTS  
PHOTOGRAPHER • PENALTY SHOOT OUT  
FACE PAINTING AND TATTOOS**

..... PLUS LOTS OF CHILDRENS STALLS .....




Woodland Corner

## FUNSHINE SUMMER HOLIDAY CLUB

**4 – 11 YEAR OLDS**  
**Monday 28th July - Friday 1st August**  
**Tuesday 26th August - Friday 29th August**

We are now booking for our  
Summer Holiday Funshine Club.  
Book early to avoid disappointment!  
Booking forms and further details available  
from Woodland Corner.

<http://woodlandcornernayland.blogspot.com>  
Tel: 01206 263054  
Email: [enquiries\\_wc1@btconnect.com](mailto:enquiries_wc1@btconnect.com)

Woodland Corner, in the grounds of Nayland School,  
Bear Street, Nayland, Colchester CO6 4HY



# NAYLAND CHOIR PRESENTS

## Old, new, borrowed and blue

Gilbert and Sullivan **Trial by Jury**, plus  
**old favourites** and **new surprises**

**Nayland Village Hall**  
**Saturday 28 June 2014**

Bar opens 5.30pm

**Concert starts 6.00pm**

followed by our

**20th anniversary barbecue**

**Tickets £15 including BBQ (U16s £5)**  
available from **choir members**  
or from **Nayland Post Office**

For more details visit [naylandchoir.org](http://naylandchoir.org)  
Follow us on Twitter @[naylandchoir](https://twitter.com/naylandchoir)

Nayland with Wissington Conservation Society  
Registered Charity No 268104

## 40<sup>th</sup> ANNIVERSARY CELEBRATION

MEMORIES of  
**NAYLAND & WISTON**  
Reflections on the last 60 plus years  
by some of those who were there

1974 — DISPLAY — 2014

**FRIDAY 27<sup>th</sup> JUNE 7-30<sup>pm</sup>**

**NAYLAND VILLAGE HALL**  
Wine and light refreshments

All are most welcome ~



[www.naylandconservation.org.uk](http://www.naylandconservation.org.uk)

# NAYLAND VILLAGE HALL CINEMA

## Friday 20th June

RALPH FIENNES FELICITY JONES KRISTIN SCOTT THOMAS TOM HOLLANDER

Charles Dickens was  
the most famous  
writer in the world.  
His greatest story  
was the one he  
could never tell.

## The INVISIBLE WOMAN

Cert R

**Starts 8pm Bar open at 7.30pm**  
Ice cream available

**Tickets £5 (inc tea/coffee and biscuits)**  
available from the Post Office (afternoons) or on the door



LOTTERY FUNDED



Nayland with Wissington Conservation Society  
Registered Charity No 268104

# NAYLAND OPEN GARDENS

SUNDAY  
JUNE 8<sup>th</sup>

2-6 pm

Tickets from Gardens & Hall

£5 - children free

TEAS  
IN THE VILLAGE HALL  
CAR PARKING

[www.naylandconservation.org.uk](http://www.naylandconservation.org.uk)

## Nayland with Wissington 2015 Calendar

Fantastic new views of the parish  
accompanied by historic views and notes

Still priced at just £5 !

They make ideal gifts

Calendars will be on sale from  
2nd August at the  
Nayland Flower Show  
(2pm-5pm Village Hall)

After this they will be on sale at various village events  
and at the Post Office, Hatten's Stores and Forget-Me-Not



Photograph: Mike Hunter

Sponsor: Transition Nayland

October 2015

|       |        |
|-------|--------|
| 1 Wed | 17 Fri |
| 2 Thu | 18 Sat |
| 3 Fri | 19 Sun |
|       | 20 Mon |



# HARE & HOUNDS LEAVENHEATH

A TRADITIONAL COUNTRY PUB WITH FINE ALES  
WE HAVE A LARGE, FAMILY FRIENDLY BEER GARDEN

SATURDAY 14TH JUNE - OUR FIRST BIRTHDAY PARTY  
WITH LIVE MUSIC FROM L.A.M.Z AND A HOG ROAST

SUMMER BEER FESTIVAL 7 - 10TH AUGUST  
WITH LIVE MUSIC ON 9TH AUGUST AT 9PM

|                    | OPENING HOURS         | FOOD SERVED        | WE ALWAYS HAVE                                    |
|--------------------|-----------------------|--------------------|---------------------------------------------------|
| MONDAY             | CLOSED ALL DAY        | CLOSED ALL DAY     | DOOM BAR AND GREENE                               |
| TUESDAY - THURSDAY | 12 - 3PM & 5PM - 11PM | 12 - 2PM & 6 - 9PM | KING IPA ON TAP                                   |
| FRIDAY & SATURDAY  | 12PM - 11.30PM        | 12 - 2PM & 6 - 9PM | WITH 1 OR 2 GUEST ALES                            |
| SUNDAY             | 12 - 10PM             | 12 - 3PM           | WE NOW STOCK ADNAMS "DRY HOPPED LAGER" ON DRAUGHT |



## M & J REGAN

### Building Contractors

A local family company who have been trading  
in the area for over 35 years.

01206 264019

07803 604254

[m.regan3@sky.com](mailto:m.regan3@sky.com)

GARDEN DESIGN  
BORDER DESIGN  
PLANT SOURCING  
GARDEN  
OVERHAUL  
GARDEN  
GIFT VOUCHERS

**Give your garden the  
makeover it deserves!**

We are a local garden design  
company and can offer a  
complete design, construction  
and maintenance package  
or just a planting plan for a  
single border.

[WWW.ZINNIADDESIGN.CO.UK](http://WWW.ZINNIADDESIGN.CO.UK)



Call Angela for a consultation:

**01787 212264**

**07974 375254**



## Nayland House

Off Bear Street  
Nayland CO6 4LA

We offer long and  
short term care for elderly  
and dementia residents  
in our beautiful home set  
in the heart of the village

You are very welcome to  
visit – come and see our  
excellent facilities

For more information  
please telephone:  
**01206 263199**



**"Award Winning  
Professional Company  
Throughout  
Essex and Suffolk."**

Providing exceptional quality home care services to  
support you with independent living, from assistance  
with personal care to administering of medications

All staff are subject to references and CRB  
clearance at enhanced level and are fully trained in  
all aspects of care

If you would like a free no obligation appointment to  
discuss your required level of support we will arrange  
for one of our trained assessors to visit you in the  
comfort of your own home.

Please call us on **01473 231444**

Email: [admin@naylandcare.com](mailto:admin@naylandcare.com)

[www.naylandcare.com](http://www.naylandcare.com)

Registered with the Care Quality Commission and  
members of the United Kingdom Homecare Association.  
Business Award Winners 2003 2004 2005 2009



## N.P. & S.G. Evans Plumbing & Heating

Hill Farm, Wiston, Nayland, Colchester CO6 4NL  
npsgevs@gmail.com

**Tel: 01206 262091 Mob: 07979 535670**

For all of your plumbing & heating requirements.  
Also guttering maintenance & replacement.



## Water Lane ARCHITECTS

An RIBA Chartered Practice

- Architectural services for new and existing buildings
- Houses, schools, commercial and development schemes
- Designs for greater sustainability — AECB member

Chris Exley, RIBA, AECB  
info@waterlanearchitects.co.uk 01206 890178  
www.waterlanearchitects.co.uk  
Water Lane, Little Horkesley 07827 414847



## Sanderson Little Greene

— PAINT & PAPER 1773 —

## FARROW & BALL

Manufacturers of Traditional Papers and Paint

PAINT & PAPER LIBRARY

## earthborn® ZOFFANY

DESIGNERS GUILD

**Designer Paint & Wallpaper Studio**

- Wallpaper selection area
- Stockists of Farrow & Ball, Little Greene and Paint Library designer paints
- Paint matching and mixing service, 1000s of colours to choose from
- You can order on-line
- Professional & DIY decorators welcome

Decorating, Glass & Building Centre  
Layer Rd, Colchester CO2 9JY  
01206 216000

Decorating & Glass Centre  
Martins Road,  
Chilton Ind. Est. Sudbury  
01787 372241

Find us on Facebook  
@KBDecorating

**KB Kent Blaxill**

Farrow & Ball can be purchased online at [www.kentblaxill.co.uk](http://www.kentblaxill.co.uk)

## A.D.J Design Architectural Services

### Planning & Building Regulations

Architectural plans drawn for new homes, extensions, loft conversions & alterations.

Extensive local portfolio of design and building projects.

Ashlaburn  
Coach Road  
Gt Horkesley  
Colchester  
Essex  
CO6 4AS

**Tel: 01206 271163**

[www.adjdesign.co.uk](http://www.adjdesign.co.uk)

## Nayland Dental and Cosmetic Clinic



18 High Street, Nayland, Suffolk, CO6 4JF

Family Dentist Teeth whitening  
Children welcome Hygienist

### PRIVATE DENTISTRY AT AFFORDABLE PRICES

Free examination for children of school age with full paying adult

**DENPLAN NOW AVAILABLE**

**SLEEPWELL ANTI SNORING AIDS  
ALSO AVAILABLE**

Early Morning & Late Evening Appointments Available

**FREE ORAL CANCER SCREENING  
GIVEN WITH EXAMINATION**

Call us to book an appointment or request an  
information pack **01206 262262**

## PETER MOSS & SONS

Providing all aspects of  
vehicle maintenance



68 Bear Street  
Nayland  
Tel: 01206 262866

**SERVICING ■ REPAIRS**

## BUGG SKIP HIRE

**For All Your Waste  
Disposal Requirements**

- Excellent Service
- Lowest Prices
- Various Sizes to Suit Every Situation



**Tel: 01206 262605**

[www.buggskiphire.co.uk](http://www.buggskiphire.co.uk)

The Woodyard, Gravel Hill, Nayland, CO6 4JB



*Gladwins Farm*

*Harpers Hill*

*Nayland*

*Suffolk CO6 4NU*

*Tel: (+44) 01206 262261*

*Fax: (+44) 01206 263001*

*E-mail: [contact@gladwinsfarm.co.uk](mailto:contact@gladwinsfarm.co.uk)*

*[www.gladwinsfarm.co.uk](http://www.gladwinsfarm.co.uk)*

- Award-winning self-catering cottages – sleeping 2–8 people. Charming conversions of period farm buildings, some are designed to be accessible by accompanied disabled visitors, some luxury cottages with private hot tubs.
- Moving house? Longer tenancies in the Winter period can be arranged.
- Keep fit in our swimming pool – open to non-residents on a contract basis, shared and sole use times.
- Swimming lessons throughout the week. Fully air-conditioned in a lovely building. Available for childrens' parties.
- Guests have the use of the pool, sauna, hard tennis court and playground. The lake is stocked with coarse fish. Pets welcome.

*Brochure and details available from Stuart and Susie Bradshaw. 01206 262261*

*[www.gladwinsfarm.co.uk](http://www.gladwinsfarm.co.uk)*



# The 2014 Taste of Sudbury FOOD & DRINK FESTIVAL

Promoting Local Produce & Local Restaurants

FRUIT & VEG • CHEESES  
ICE CREAMS • SPIRITS  
CHAMPAGNE • BEERS  
JUICES • BAKERY  
MEATS & FISH  
COOKERY DEMOS  
& LOTS MORE!

Market Hill & St Peters Church, Sudbury  
From 11am to 6pm - Sunday 22nd June  
FREE ENTRY • FREE PARKING • FREE TASTERS

enquiries@tasteofsudbury.co.uk  
www.tasteofsudbury.co.uk

Contact Jane Hatton  
01787 468634

*Matthew Gough*  
MPFA, Dip. HND, CAG PB 1&2

## PIANO TUNING PIANO SALES AND HIRE



• PIANO TUNING,  
REPAIRS AND  
FULL RENOVATIONS

• QUALITY PIANOS  
INCLUDING YAMAHA MODELS  
FOR SALE OR MONTHLY HIRE!

• VARIOUS MONTHLY RATES  
A GREAT WAY TO TRY A QUALITY  
PIANO BEFORE YOU BUY

Frinton-on-Sea

*Established since 1988 and Fully Qualified  
Covering the Nayland area for over 25 years*

# 01255 670780

www.mpgpianos.com



## BARNEY THE DECORATOR YOUR LOCAL PAINTER & DECORATOR

Quality Decorating Applied To Last!

Fully Insured - Friendly Professional Service  
No Job too Big or Too Small

Call Barney for your free quote: 01206 264116 07856 540664  
or email: barneyjhp@gmail.com 2 Laburnum Way, Nayland CO6 4LG

## PRINCIPLE HEATING SOLUTIONS

Proactive from conception to completion

e: daren@principleheatingsolutions.co.uk  
w: principleheatingsolutions.co.uk

t: 07976 151595



oil Wood  
biomass burners  
servicing  
installation logs chips  
pellets



Recommended Installer



Renewable Heat Incentive (RHI)  
Grants available

Supply and installation of wood burning  
stoves and boilers

Oil boiler servicing and installation

Supply and installation of oil tanks

Please call or email for your free  
no obligation quote



74 HUNGERDOWN LANE  
LAWFORD  
COLCHESTER  
ESSEX  
CO1 2LX

## ST JAMES CHURCHYARD SPRING



Very many thanks to all those who turned out for this most successful churchyard working party. One of the participants wrote: "We had a lovely morning clearing the garden up. Everyone agreed how lovely and tidy it looked afterwards so we all must have done a jolly good job. A nice mix of pruned beds and natural areas. Everyone worked so hard, including some new faces there."

**James Carver**

## NAYLAND MOBILE LIBRARY

### Route 20 : High Street P.O.

Saturdays at 10am-11.15am,  
every 4 weeks:  
31 May  
28 June  
26 July  
23 August

### Route 9 : Parker's Way

Saturdays at 3.55pm-4.30pm,  
every 4 weeks:  
14 June  
12 July  
9 August

Tel: 01473 584563  
[www.suffolklibraries.co.uk](http://www.suffolklibraries.co.uk)



## Nayland & District Horticultural Society

Coach outing to

## Peter Beales Roses & Bressingham Steam & Gardens

### Monday 8th September

coach leaving Nayland 9am - leaving Bressingham 4.30pm

This is open to non-members and the cost is £25

If you wish to book a seat please complete the booking form below and send, with your payment to: Mrs L Brooks, 50 Gravel Hill, Nayland CO6 4JB or place in the Community Times Box in the Post Office (cheques payable to Nayland & District Horticultural Society). We will run a reserve list so if anyone who has booked finds they cannot come we will hopefully be able to sell their ticket. For more information or cash payment please ring Lorraine on 262807 or email: [lorraine.nayland@btinternet.com](mailto:lorraine.nayland@btinternet.com)

## Peter Beeales & Bressingham Gardens Booking Form

You will receive an acknowledgement of booking.

I would like to book ..... seat(s)      Payment attached: £.....

Name: ..... Tel: .....

Address: .....

Email: .....

Names of Guest/s: ..... Where boarding coach: Harpers Est / Parkers Wy / Stoke Rd



NAYLAND WITH WISSINGTON PARISH COUNCIL

## Do you live or work in Nayland or Wiston?

Would you like a new challenge?  
Are you concerned about the local  
community and environment?  
Do you enjoy working as part of a team?

### Would YOU be interested in joining the Parish Council as a Co-opted Member?

If so, please apply by letter by 10 June 2014 and let us know what qualities and skills you can offer the community. Applications will be considered by Council and an appointment made in July 2014. You can find out more about this vacancy by speaking to a Parish Councillor or by emailing the Parish Council at:

[pc@naylandwithwissington.suffolk.gov.uk](mailto:pc@naylandwithwissington.suffolk.gov.uk)  
CHARIS, Upsher Green, Gt. Waldingfield, SUDBURY  
Tel: 01787 880935



A huge thank you is due to everyone who helped at this year's Church Fete on 26<sup>th</sup> May. We had more volunteers than ever before and more items to sell. Hopefully this will be reflected in the final surplus.

However this is also dependent on the weather which we can do nothing about! Thanks also to our sponsors and to Arthritis Research for taking the leftover items and books. The Classic Cars made a spectacular display and we are very grateful to all the owners for bringing their precious vehicles. Last but not least I would like to give special thanks to the Committee who worked extremely hard over several months to ensure everything ran smoothly on the day.

Next year's fete will be on Monday 25<sup>th</sup> May 2015. If you have ideas for improvements and different stalls or sideshows, please let us know.

*Andora Carver, Chairman, Fete Committee*

Nayland & District  
Horticultural Society

# SUMMER FLOWER SHOW

Saturday 2nd August  
2pm-5pm Nayland Village Hall - Admission 50p  
Produce Stall, Teas, Raffle, Nayland Calendar 2015

Classes for: Vegetables, Fruit, Flowers, Flower Arranging, Cookery, Preserves, Art & Craft, Photography, plus Children's & Family's Sections - open to non-members - entries by 30th July  
Show schedules available at local shops, Lorraine 262807 or [www.naylandhortsoc.org.uk](http://www.naylandhortsoc.org.uk)



# Memory Lane Tea Dance



**Wednesday  
18th June**



**Nayland Village Hall  
2 pm to 4 pm**

**Free Entry & Afternoon Tea**  
All ages welcome, especially those over 60

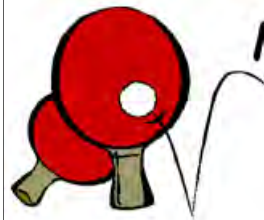
**Social dancing to favourite dance band sounds,**  
Afternoon Tea provided and so much more ...

Rural Coffee Caravan invites you to meet some  
of the agencies that provide services, benefits  
and information you may need from them.

For more information and transport enquiries  
please call Rural Coffee Caravan  
(Ann) on 01379 855 338  
or FunDancing (Janet) on 07506 350 455

Rural Coffee Caravan Information Project, registered  
charity no 1125748, [www.ruralcoffeecaravan.org.uk](http://www.ruralcoffeecaravan.org.uk)  
FunDancing - [www.fundancing.co.uk](http://www.fundancing.co.uk)

# Come and Play Table Tennis



**Monday afternoons**

**2pm - 3.30pm**

**Nayland Village Hall**

All ages welcome - Equipment provided

**Come and give it a try**



Contact Neil Barbrook  
263619 or  
07817 449920

# Nayland with Wissington Conservation Society

Registered Charity No 268104

# LIMITED EDITION 40TH ANNIVERSARY TEA TOWEL



Price £5.50 each or £10 for two  
Available at Forget Me Not  
or from Committee Members



# STOUR BORDER Country Music Club

Nayland Village Hall 7.30 - 10.30  
Admission, usually £5, doors open 7pm  
No bar – please bring your own drinks.  
Tea/coffee & light refreshments available

**SUNDAY 22ND JUNE**

**'Best of Friends'**

Popular return for one of the top duos on the circuit

**SUNDAY 27TH JULY**

**'Brian's Country'**

Welcome return of Brian Mann radio DJ

**SUNDAY 24TH AUGUST**

**'Campbell's Country'**

First time here for this duo

**SUNDAY 25TH SEPTEMBER**

**'Spinning Wheel'**

First time here for this duo



## NAYLAND PLAYGROUP'S 40th BIRTHDAY CELEBRATIONS



Over 150 people attended a tea party at Woodland Corner to celebrate 40 years of Nayland Playgroup. Many faces from the past, joined current playgroup children for this very special occasion to enjoy tea and cakes and catching up with old and new friends whilst the children had great fun playing on the bouncy castle and zippy dipper (in between the rain showers!). A huge birthday cake took pride of place and a display of photographs spanning the generations from the past 40 years proved very popular – especially as there were a number of photos which included parents of children currently attending playgroup! There was also a visit from Peppa Pig and commemorative money boxes for all of the existing playgroup children.

The weather provided challenges but these were overcome in true Nayland style! A brief storm did nothing to dampen spirits and only added to the excitement. As the heavens opened and the assembled guests held onto tent poles against the gusts of wind, Chair, Rachel Hitchcock, paid tribute to the staff and committee and everyone who has supported Playgroup over the years and also to the local community who had sponsored raffle prizes and helped so generously towards the party. There was a special mention and presentation to Manager Sue Clarke who celebrates 20 years at Playgroup this year. Rachel thanked her for her hard work and dedication and commented on the fact that so many people who become involved in Nayland Playgroup and Woodland Corner remain involved for many years which is a real credit to all involved.

As we mentioned in the previous Community Times, Nayland Playgroup has come a long way from its beginnings a few mornings a week in the village hall via a portacabin in the grounds of the school to our own Woodland Corner building that now houses, not just Playgroup, but Breakfast, After School and Holiday Clubs for the older children. The ethos, however, remains the same – a real community organisation supporting local families.

Special thanks to everybody who worked so hard to make the event such a success and to all those in the local community who supported us; Ailsa Clarke who designed our birthday logo, Debbie Lock at Little Barn Cakes, Mrs Bennett's Chutneys, Forget-Me-Not, Kerridges Butchers, The Anchor Inn, SVC Group, The Stoke-by-Nayland Club, The Cutting Room Colchester, Gladwins Farm, John Elkin & Down To Earth, The Wine Company, Ruby's Vintage Tea Party, Leavenheath Scout Group, Nayland Primary School, M J Regan Builders, the Buntings, the army of tent transporters, erectors and dismantlers, the cake bakers, the sandwich makers, the ladies in the kitchen, the staff and committee and, last but not least, Peppa Pig!

And here's to the next 40 years!

*Clockwise: manager Sue Clark and former playgroup leader Tricia Hall, Peppa Pig, some old faces reminiscing, some new faces*





# Nayland with Wissington Society News



## NAYLAND CINEMA

Chris Thompson *Secretary V.H.M.C.*

On Friday 20<sup>th</sup> June we will be showing **The Invisible Woman** a film about the relationship between the writer, Charles Dickens and his mistress, the actress Nelly Ternan. The film stars Ralph Fiennes as Dickens, Kristen Scott Thomas as Nelly's mother and Felicity Jones as Nelly.

We have recently improved the sound quality thanks to Nick Moriarty.

All films start at 8pm. We have a bar from 7.30pm and an interval for tea and coffee. Tickets cost £5 either from the Post Office or on the door. All profits go towards the maintenance of the Village Hall.



## ROYAL BRITISH LEGION

Secretary: Andrew Gowen 262534 parkersag@yahoo.co.uk Chairman: Ken Willingale 262531

At our meeting on 19 May the plans to commemorate the start of the 1<sup>st</sup> World War were discussed and agreed. On 4<sup>th</sup> August we shall start with a short service at 7pm around the war memorial in which the names of those that were to be killed in the war will be remembered. We shall then process into the Church for readings and music avoiding anything that might indicate celebration which it is not. Both the village players and the Nayland Choir will be major participants and we shall be sending an invitation to all the Parishes in the Benefice to encourage others to join us.

We are planning a trip to the Cold War Museum near Woodbridge provisionally on 22<sup>nd</sup> October; again it will be open to all comers. Details have yet to be worked out.

The meeting ended with a short talk from Gerald Knox on his Naval career which included serving a short time in a submarine and his involvement in the Suez operation amongst many other things. It was a very enjoyable session and much appreciated by us all.

Our next meeting will be in the Anchor starting with a pre-meeting drink at 7.30pm on 21 July at the Anchor Inn.



## VILLAGE PLAYERS

[www.villageplayers.co.uk](http://www.villageplayers.co.uk)

Chair: Gale Scott 01206 262061

Membership: Emma Wallis 01206 271366

In April, Bryan and Jenny Smith's production of *The Miracle Worker* was extremely well received by both audiences and adjudicators. This complex and moving play had many reaching for their tissues and congratulations to all involved.

At our AGM, Bryan Smith stood down after many years of committed service, and we were joined by Jill Fernandez. Nick Moriarty is commencing his production of *Jack and the Beanstalk* for which auditions will be held on 13th July 5pm - 7pm and 16th July 7.30pm - 9.30pm both in the Church Hall, Nayland. The performances will be 5th/6th/12th/13th December with matinees on the Saturdays as well as evenings.



## BOWLS CLUB

Secretary: Eva Rolfe 263151

Our last game of the winter league at the end of March was at home against Bealings. We knew we really needed to win and for once we won three games convincingly and held on to a healthy shot lead; this gave us 8 points which was enough to put us in a clear third place in the first division a very good result for the first season back at that level.

Our summer league started on May 14th with a home game against Polstead. In the first two games one team won and the other managed a draw the second session however saw both teams get off to good starts which they both carried through to good wins, so a 9-1 victory. This is a pleasing result as this is the league where we try to get our more inexperienced bowlers to take part to get practice in matches.

One of our pairs qualified for the finals day at Needham Market where they finished as runners up in their group; a slightly disappointing result as they did not loose a game all day, but the team who won the group were happy to get a draw against them knowing that they would then have one point more than us. Never mind, at least we had one team there.

Fixtures

June: 5th Hadleigh away, 11th Bramford away, 18th Tithe Barn home, 30th Burstall away.

July: 16th Polstead away, 23rd Stratford St Mary home

*Sylvia Bond*





## HORTICULTURAL SOCIETY

Sec: Lorraine Brooks 262807  
lorraine.nayland@btinternet.com

[www.naylandhortsoc.org.uk](http://www.naylandhortsoc.org.uk)  
Chair: Trevor Smy 262022



The good old British weather always provides unpredictability for our **Spring Show**, but this year the early warmth enabled a delightful display. Unlike last year, which saw one of the coldest, longest winters and a blizzard on show day, there were no winter woollies needed! A steady stream of visitors popped in to enjoy refreshments and a chat in the colourful and fragrant atmosphere provided by the displays. HortSoc would like to thank the judges, our helpers, those who donated prizes or cakes, the entrants and visitors for their support. You all make this a great start to our horticultural year.

Our youngest exhibitor, Michael Fryer age 8 (pictured), gained prizes for his vase of *Sophora tetraptera* (an exotic looking shrub native of New Zealand) and a dish of floating *Camellia* blooms. Jeans Evans, a more experienced entrant, won with her magnificent houseplant, a *Clivia miniata*, for the second year running. Shirley Whitnell was successful with her beautiful vase of Tulips and pot of *Primula* and Rob Sherriff with an impressive vase of mixed flowering shrubs and *Hellebores*. There were 75 entries in the 17 classes and the Olive Noakes Cup for the most successful exhibitor went to Lorraine Brooks.

The full results were: Vase flowers/shrubs: Rob Sherriff, Sheila Sessions, Hazel Gardiner; Vase Hyacinths: Lorraine Brooks, Hazel Gardiner, Sheila Sessions; Vase flowering shrub/tree: Michael Fryer, Trevor Smy, Sheila Sessions; Vase Tulips: Shirley Whitnell, Rob Sherriff; Vase *Camellia*: Tom Gardiner, Sheila sessions, Jackie Grant; Vase assorted Daffodil/Narcissus: Liz Thorne, Jackie Grant, Hazel Gardiner; Vase miniature Daffodil/Narcissus: Lorraine Brooks, Sheila Wildish, Sheila Sessions; Vase specimen Daffodil/Narcissus: Colin Ramsell, Jackie Grant, Lorraine Brooks; Pot Spring Bulbs: Lorraine Brooks, Sheila Wildish; Pot Daffodil/Narcissus: Lorraine Brooks; Pot miniature Daffodil/Narcissus: Trevor Smy, Lorraine Brooks; Pot Polyanthus/Primula: Lorraine Brooks, Shirley Whitnell, Sheila Sessions; Flowering houseplant: Jean Evans, Lorraine Brooks, Ann Channon; Three floating blooms: Jackie Grant, Michael Fryer, Shirley Whitnell; Flower Arrangement: Daffodil/Narcissus - , Rob Sherriff; Flower Arrangement 'Spring Fever': Hazel Gardiner, Lorraine Brooks, Liz Thorne; Rhubarb: Trevor Smy, Jackie Grant, Hazel Gardiner.

The chairman welcomed 36 members to the Annual General Meeting and Fun Quiz evening on 15th April. He thanked Ken Willingale for auditing the accounts, Pat Bray for her press coverage, Andrew and Sue Gowen for hosting the summer party and the committee for their support. He expressed thanks to those who are not on the committee but offer invaluable help with various tasks during the year and those who donate plants, produce, cakes, raffle prizes for events. Last but certainly not least he thanked all our members for their support in making our activities so successful and enjoyable.

Tom Gardiner kindly chaired the election of officers and committee members. He began by saying the small committee underplay their achievements but he often witnesses the effort they put into organising activities. Officers re-elected were Trevor Smy (chair), Lorraine Brooks (sec), Sylvia Bond (Treasurer), Anne Spencer, Hazel Gardiner, Colin Ramsell, Helen Gladwell and Sheila Wildish (committee).

Following the fairly brief formalities members settled down to the fun quiz with horticulture in mind. The winners were 'The Garden Pests' with 'Autumn Leaves' just a few points behind and 'Mai Gold' and 'The Vegetables' were in joint third place.

We are very grateful to everyone who supported the **Morning Market** on 17th May. It was a busy morning and a very happy atmosphere to relax and enjoy refreshments with friends and was successful in raising just over £320.

We are hoping for good weather for our coach outing to the Royal Botanic Gardens Kew in June and our summer Garden Party in July.

Schedules for our 33rd<sup>1</sup> annual **Flower Show on 2nd August** are available. The **Hanging Basket and Scarecrow Competitions** will be judged in situ on the days shown below – why not make it family fun and enter as a family or group. It would be delightful to see many 'new residents' popping up all round the village!

We are starting to take bookings for the coach outing on Monday 8th September to Peter Beale's Roses and Bressingham Steam and Gardens; there is a booking form on page 18 and more details available on our website or from the secretary. This is open to non-members and the cost is £25, for travel and entry to both venues.

Forthcoming activities:

|                           |                                                                                                                  |
|---------------------------|------------------------------------------------------------------------------------------------------------------|
| 11 <sup>th</sup> June     | coach outing to <b>Royal Botanic Gardens Kew</b> [fully booked]                                                  |
| 11 <sup>th</sup> July     | <b>Summer Garden Party</b> for members [details page 13]                                                         |
| 12 <sup>th</sup> July     | Judging of the <b>Scarecrow Competition</b> [details page 9]                                                     |
| 26 <sup>th</sup> July     | Judging of the <b>Hanging Basket Competition</b>                                                                 |
| 2 <sup>nd</sup> August    | <b>Annual Flower Show</b> 2pm Village Hall - schedules available in local shops or on our website [page 11 & 19] |
| 8 <sup>th</sup> September | Coach outing to <b>Peter Beales Roses &amp; Bressingham Steam &amp; Gardens</b> [page 18]                        |





## NAYLAND WITH WISSINGTON CONSERVATION SOCIETY

Hon. Secretary: Andora Carver 262970  
carversnayland@talktalk.net

[www.naylandconservation.org.uk](http://www.naylandconservation.org.uk)  
Chairman: Mr J Alexander 262676

Our 40<sup>th</sup> Anniversary year is proving to be one of our busiest ever. The new **footpath link** to Stoke was successfully opened in early April and is regularly used. We are grateful to the Tendring Hall Estate for enabling this project to go ahead, and to the Dedham Vale and Stour Valley AONB Project Sustainable Development Fund for part funding of the groundwork involved.

The Annual Early **May footpath walk** was led by Martin Wright. The weather was good and the walkers thoroughly enjoyed seeing the countryside between Wiston and Arger Fen.

### Open Gardens:

About 18 gardens are expected to be open on Sunday June 8<sup>th</sup> and we are, as ever, extremely grateful to the owners who put in so much hard work to prepare their gardens. The tea helpers, cake makers and ice cream servers also work hard to make the day such a pleasant and relaxing village event. Very many thanks to everyone involved. Funds raised this year will go towards the second Nayland Test Pit Dig in September and the good news is that the Dedham Vale AONB SDF has approved our grant application for £3,750 towards the £8,000 cost of 16 pits. This means that the current funding shortfall is only £1,250 because the Community Council has given us a grant of £500 and last year's Open Gardens surplus of £2,500 also went towards the project. Most of the pit sites are now confirmed and if anyone would like to join the volunteer diggers over the weekend of 20<sup>th</sup> and 21<sup>st</sup> September, please contact the Hon. Secretary.

### 40<sup>th</sup> Anniversary:

June 27<sup>th</sup> is the date of our major celebration which starts at 7.30pm in the Village Hall. All members and friends are invited for a glass of wine, light refreshments and to hear about times gone by from a group of distinguished Nayland and Wiston residents. There will also be a display of the Society's achievements and activities since 1974.



*Photos top: Hector Wykes-Sneyd, land agent for the Tendring Hall Estate, opened the new permissive path, Below: Sean Norfolk and James Brewer replacing rotten poles and broken wire fencing on Nayland Meadow*



## NAYLAND AND DISTRICT WOMENS INSTITUTE

Secretary: Lorna Rumsey 01787 211975

President: Jeannette Finch 262993

Our May meeting is our Annual Meeting, followed by a Resolution Meeting to discuss which Resolution is put forward for The National Federation AGM in Leeds, which is in June.

We are walking around Nayland in June with Wendy Sparrow, who is an expert on local History.

In July we are talking about Gem Stones. For further information look at our notice board, in the centre of the village, we love to have visitors, and perhaps new members, so do come along.



## THE FRIENDS OF ST. JAMES' CHURCH, NAYLAND

Registered Charity Number 1052641

Chairman: Alan Edwards 262800

Please don't save Jam Jars for the moment as there will not be a full scale JAMBoree this year. Instead, we plan to have a Sale of Jams and Preserves at the Christmas Fayre. If you want any jars in the meantime, please leave a message on 262800 and we will sort some out for you.





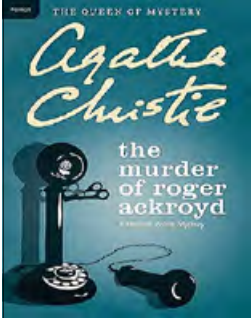
## THE VILLAGE LUNCH

Jo Murrison 262369

At our spring lunch on 7th May Jules Pretty gave an extremely interesting and informative talk on 'The Luminous Coast', which was enjoyed by 75 people and raised £503. Jules kindly didn't charge a fee for the talk but £50 was donated to St Helena Hospice.

The next lunch is planned for Wednesday 29th October when Dr Patrick Thompson will give a talk on 'Catering The Royal Way'. The lunch will be held in the Village Hall, 11.45 am for 12 noon, with lunch at 1pm.

Thank you for your continuing support.



## BOOK CLUB

Stephanie Deering 264126 slouisethorne@aol.com

Our first meeting was held after we had all read our first title, Rebecca, by Daphne Du Maurier. It was well received and enjoyed by all who had joined.

Our next book is quite different, *The Murder of Roger Ackroyd*, by Agathe Christie. We will be discussing this in early June.



## NAYLAND ART GROUP

Daphne Berry 262641

The proposed visit to Kersey Mill was enjoyed by all despite the fact that the owner of the Art Studio on site had suddenly decided to close it down and move it to another location unknown to us. Plan B was put in place by calling in at Hollow Trees Farm shop followed by a further stop at the Corn Dolly outlet before heading for home, thus completing an unexpected outing for all concerned.

This coming Wednesday we have our visiting tutor Vernon Lever back to help us complete our Teddy Bear pencil / ink sketches with water colour paint finish.

On the 18th June we are heading out again to the Woodbridge Tide Mill to investigate its Art related activities and then finally on the 25th July we end this session with our usual afternoon Cream Tea at the Newton Green Golf Club .

**Colin Ramsell**



## OVER 60s CLUB

Secretary: Barbara Smith 501492

President: Eva Rolfe 263151

We are now holding our meetings at the Community Centre at Parkers Way. This venue has proved more convenient to members and attendance has increased. We are hoping to arrange an outing for later in the year.

More members would be very welcome. We meet on the second Thursday of the month at 2.30pm; the next meetings are 10th June and 8th July.

**Diana Whiting**



## NAYLAND CHOIR

Secretary Cathy Allen  
cathyallen@talktalk.net

[www.naylandchoir.org](http://www.naylandchoir.org)

Chair: Ian McKay 01206 242223  
dougimckay@btopenworld.com

### SOMETHING FOR EVERYONE AT NAYLAND CHOIR'S SUMMER CONCERT

Nayland Choir have announced their summer concert, *Old, new, borrowed and blue*, to be held on 28 June from 6pm onwards at Nayland Village Hall. With a selection of traditional and modern favourites, and the comic Gilbert and Sullivan operetta *Trial by Jury*, the emphasis is on family entertainment. And the concert will be followed by a barbecue to celebrate the choir's twentieth anniversary, to round off an enjoyable day of celebration.

The choir, which includes singers from West Bergholt, Leavenheath and Stoke as well as Nayland itself, has performed in recent months at the Royal Albert Hall and St Edmundsbury Cathedral.

'Over the last two decades we've brought serious and light music to the Stour Valley villages,' says choir chairman Ian McKay. 'We're excited about our June concerts which includes some old favourites and some surprises too.' Tickets are £15 (U16s £5) including barbecue. Visit [naylandchoir.org](http://naylandchoir.org) for more information.

Nayland Choir rehearses at Nayland School on Thursday evenings from 8pm. New members are always welcome.



## NAYLAND SURGERY NEWS

[www.northhillsurgery.co.uk](http://www.northhillsurgery.co.uk)

Rachel Beales, Practice Manager 578070

We are pleased to welcome two new clinicians to our team, Dr Katherine Daniels who will be based at West Bergholt and our new advanced nurse practitioner Ms Thurlwell who will be part of our duty team.

Dr Sinha has recently left our practice completing her GP training and Dr Suresh is due to finish her training at the end of May. I am sure you will join us in wishing them all the best in their future careers.

Please do not forget to re-order your repeat prescriptions in plenty of time over the bank holiday weekend at the end of May, our dispensary require 48 hours from receipt of prescription until it is able to be dispensed to you.



**MEDECINS SANS FRONTIERES**  
**DOCTORS WITHOUT BORDERS**

## NAYLAND FUNDRAISING COMMITTEE

Secretary: Caroline Lowe 263852

We are delighted to announce that our coffee morning held on 26<sup>th</sup> April in the Church Hall raised in excess of £680.00. The event was held to raise funds for Médecins Sans Frontières.

We would like to thank everyone who helped, gave donations, provided cakes, plants, raffle prizes and gifts and especially to those of you who came along on the day and supported us in aid of this vital organisation.



## NAYLAND OVER 60S LUNCHEON CLUB

A Monthly Lunch for Senior Citizens ~ Church Hall ~ 12.00 noon for 12.30pm ~ £3  
Olga Alexander on 263923

Please note another date change - the next luncheon will be held on Thursday 26th June (not Tuesday 24th). The summer tea party will be held on Tuesday 15th July at Longwood Barn. There will be no luncheon in August; they resume on Tuesday 23rd September. Make a note of these dates in your diaries and come along and join the friendly atmosphere for a chat with friends, old and new.

If you would like to join us for lunch just come along. If transport is difficult telephone Olga Alexander on 263923 to see if we can collect you.



## NAYLAND MOTHER & TODDLER GROUP

Leaders: Michelle Plumb 264116 [michelleplumb11@gmail.com](mailto:michelleplumb11@gmail.com)  
Alice Palmer 263629 [alice\\_brown42@hotmail.com](mailto:alice_brown42@hotmail.com)

Nayland Mother and Toddler Group meet every Friday in Term time at Nayland Village Hall from 9:45 til 11:45. It's a friendly group with lots of toys for your little ones to enjoy. Tea and coffee is available to mums, dads and carers and juice and biscuits for the children. Its a great place for new mums to meet people and make friends! First visit to us is free! Then its £2.50 per mother and child(ren). Look forward to seeing you there!

The Toddler group's last day before the summer holidays is Friday 18th July and resumes again on Friday 5th September.



## PRAM & TODDLERS IN CHURCH

ST JAMES' CHURCH NAYLAND

SECOND FRIDAY OF THE MONTH AT 2pm

SUMMER: 13 JUNE; 11 JULY; 8 AUGUST

SHORT INFORMAL SERVICE WITH SINGING, INSTRUMENTS, STORY AND PRAYER  
FOLLOWED BY DRINKS, BISCUITS AND TOYS

DO JOIN US - ALL WELCOME

For further information contact Rachel Hitchcock on 01206 263169/07788 954309



## Nayland Youth Club

Leader: Emma 07887 296409 [naylandyouthclub@hotmail.co.uk](mailto:naylandyouthclub@hotmail.co.uk)



Nayland Youth Club meets on Tuesdays evenings during term time.

Please contact Emma for further information.





## 1<sup>st</sup> NAYLAND SCOUTS

Scout Leader: Malcolm Macbeth 01473 827239

Since the Easter holidays unfortunately no scouts have turned up at the meetings. Unless there are any 10½ to 14 year olds interested in coming along on a Thursday evening 7pm-9pm in the next month I will be closing down the troop. Some of the activities we have done in the past include: camping, cooking on wood fires and stoves, map and compass, learning to tie knots, hiking, canoeing, sleeping out in shelters made of natural materials, and wildlife watching.

If you would like more information contact Malcolm on 01473 827239



## NAYLAND PRIMARY SCHOOL HOME SCHOOL ASSOCIATION

Sec: Ronnie Egan 01787 210046 or 07713337791 E: [rontone01@sky.com](mailto:rontone01@sky.com)

Chair: Lindsey Regan 264019 E: [m.regan3@sky.com](mailto:m.regan3@sky.com)

Vice chairman: Drina May 01206 262464 E: [drinamay41@gmail.com](mailto:drinamay41@gmail.com)

### SUMMER FETE

The annual School Summer Fete is on Saturday 21st June 2014 from 11am-1pm at Nayland Primary School. Lots of activities and entertainment are planned for both children and adults to enjoy. All are welcome, especially any new children due to start in September. We are looking for donations of broken/chipped crockery for our Crockery Smash. Donations can be left at the school week commencing 16th June.

### SUMMER BALL

The Ball is on Friday 11th July at Le Talbooth, Dedham. 7pm-1am. Evening consists of Reception drinks, 3 course meal, disco, auction and raffle. Tickets are £55 and a few are still available from Lindsey or Drina.



### Churches of Nayland, Wiston, Leavenheath, Polstead, Stoke by Nayland

For children and parents: Activities, crafts, worship followed by afternoon tea.

Rev. Val Armstrong introduced the theme of Mothering Sunday by telling the children the well known Biblical story of Moses in the bulrushes. The children enjoyed the story and it helps to remind us all of the unconditional love parents show to their children as exemplified by Mary the mother of Christ.

The children enjoyed celebrating their achievements as part of the time for worship before sitting down to tea.

**Next Messy Church is on the 27th July at Stoke by Nayland Church from 4pm until 6pm.**

All children, parents and grandparents are very welcome to join us.



## Woodland Corner

HIGH QUALITY CHILDCARE ON YOUR DOORSTEP

In the grounds of Nayland Primary School, Bear Street, Nayland, Colchester, CO6 4HY

Administrator: Caroline Keep 263054

e-mail: [enquiries\\_wc1@btconnect.com](mailto:enquiries_wc1@btconnect.com)

Playgroup Leader: Sue Clarke 263054

<http://woodlandcornernayland.blogspot.com>

Registered Charity  
No. 1035330

### Playgroup

Celebrations have been the focus of the last half term and the children have been doing all sorts of exciting activities around this theme as we looked forward to our 40<sup>th</sup> Anniversary. And there is much more planned over the next couple of months! We will be enjoying our usual summer sports day and beach trip which are always well supported and a highlight for children and parents alike. And on a slightly different note we are currently experimenting and exploring and finding out how and why things happen with some pre-school science. We will of course also be focussing on transition activities for those children who will be going up to school in September to help prepare them for their exciting move.

Our Playgroup sessions this term are now completely full so please do contact us now if you are interested in your child starting Playgroup in September when some of our older children will be going up to school.

### Breakfast and After School Club

Breakfast and After School Club children continue to have a great time up at Woodland Corner at the beginning and end of the school day. Whether you are at work; or your child has siblings participating in school clubs; or you simply have a day out planned – Breakfast and After School Club can provide the perfect childcare solution. And again if you are interested in your child joining us at Breakfast or After School Club from September, please do get in touch as a number of our older children will be leaving us in the summer as they go up to senior school.

Woodland Corner offers daily Playgroup sessions for children from age two as well as Breakfast and After School and Holiday Clubs for school age children in its own purpose built building in the grounds of Nayland Primary School. Please call: 01206 263054 or e-mail: [enquiries\\_wc1@btconnect.com](mailto:enquiries_wc1@btconnect.com) for bookings, general enquiries and information or visit our website at: <http://woodlandcornernayland.blogspot.com>



## NAYLAND PRIMARY SCHOOL : YEAR SIX, THE EAGLES

*Mrs Kennedy & Mrs Pettman (Year 6 Class teachers)*

This term our learning theme is Central and South America. We will be learning about the physical and human geography of this fascinating and huge continent, which of course includes the River Amazon and the Amazon Basin. Investigating food webs and adaptation in this the most bio-diverse environment on earth, means there will be plenty of things to discover.

Our recent trip to Colchester Zoo, which included a very informative presentation about Rainforests and the animals found there, certainly inspired us to find out more about the amazing creatures and plants that can be found in the Amazon. In a link to PSHE we will also be learning about: what we can do to help to protect this environment; understanding the needs of the local and indigenous peoples of the Amazon and how looking after our own environment is just as important.

After half term the children will start to focus on the modern and historical aspects of the continent. Fortunately this links in well with a certain popular, sporting event taking place in June... The children will also explore the fascinating culture of the Maya, including of course their use of chocolate!

As the first Year 6 Class at Nayland School, it was with some excitement (and a little trepidation) that the Eagle class sat the end of Key Stage 2 Statutory Assessment Tests – or SATs! The Eagles were well prepared, and so although some children had to sit up to 11 tests in four days, they remained calm and focussed throughout and were a credit to themselves.

An important focus of this term will be preparing the Eagles for their transition from Primary to Secondary School. As well as spending time in their new schools, the Eagles will assume more independence in their learning and this will particularly be the case in their final class collaboration of a musical based on this term's topic.

Still so much to learn and only 7 weeks to do it!!



## NAYLAND FIRE STATION

Watch Commander Tony Gardner, Suffolk Fire and Rescue Service, Fire Station, Bear Street, Nayland

Nayland Fire Station held a charity car wash on the 29th of March in aid of the Fire Fighters Charity. We raised £272 which was very good and I would like to thank everyone who had their cars cleaned and for all the hard work from the fire crew on the day. We intend to hold another Car wash in September.

A charity cycle ride will be setting off from Holbrook Fire Station on the 1st of June in aid of the Fire Fighters Charity. This will pass through Nayland so if you see them could you please give them a wave and show your support.

We have recently been called out to a few local thatch roof fires. If you live in a thatch property and would like some advice about fire prevention, type in [suffolk.gov.uk/11396](http://suffolk.gov.uk/11396) into an internet search engine, e.g. Google, and download the pamphlet "Protecting your thatched property from fire". Suffolk Fire and Rescue Service can also offer other fire safety advice if required.

Nayland fire engine and crew will be at Nayland church fete on 26th of May. This year we will also be bringing along our Fire Experience Unit. Come along and say hello!



## TRANSITION NAYLAND

[www.transitionnayland.co.uk](http://www.transitionnayland.co.uk)

Will Hitchcock T: 263169 M: 07768 435719 E: [info@transitionnayland.co.uk](mailto:info@transitionnayland.co.uk)

On March 29<sup>th</sup>, we had a stall at the Hadleigh Green Fair, alongside our friends at Transition Lavenham. It was a beautiful sunny day at the Guild Hall, with local craftspeople selling their wares, locally brewed beers on offer and lots of children's activities. We talked to people about energy efficiency, growing vegetables and how to support local farmers and other local producers. Following the fair we held our annual spring walk which followed the old railway line through Hadleigh. We were guided, as always, by Suffolk historian Chris Hunt and it was a lovely afternoon. Big thanks to Chris for another interesting walk.

In April, Simon and Will, on behalf of Green Energy Nayland, took part in the Community Energy Seminar, run by Essex County Council. The aim was to bring together speakers from community energy projects. Several topics were discussed including funding options, incentives for renewable energy technologies and how communities can be transformed through social investment. Community energy is clearly seen as having a significant part to play in the future of UK energy security and GEN and TN are proud to have played their part in this.

We had a lovely sunny afternoon for the launch of Seasonal Suffolk's foraging shop, at the Dedham Vale Vineyards. Steve, Will, Michaela and Hector ran the (very, very busy!!!) BBQ. If you haven't done so already, get down to Seasonal Suffolk's shop on a Fresh Friday. You can buy all sorts of fresh products including fresh double yoker eggs, raw milk, the freshest fish and Carl's famous Beastburgers.

In May, Michaela and Will visited a new Transition group, Sustainable Bury, who held an Energy Information evening. Will did a presentation and talked to people about how to set up a community energy company. Transition Cambridge and Transition Lavenham were also there and gave interesting presentations on energy efficiency in the home and energy security.

Also in May, Will opened his home in Nayland as part of a month of Green Open Homes, a national network of low carbon homes. Volunteers around the country, who have made significant low carbon improvements to their homes, open their doors to visitors to share their knowledge and experiences. It's a great way of demonstrating the benefits of low-carbon renovations such as solar panels, solid wall insulation and draught-proofing.

May 1<sup>st</sup> saw the latest edition of the Transition Free Press (TFP) arrive on our doorsteps. The TFP is produced by a not-for-profit collective. Michaela is Education Editor for the newspaper and TN act as one of over a hundred distributors in the UK. This colourful, grassroots newspaper is sold in shops, cafes, at community events, food festivals and farmers markets up and down the country. The latest edition has stories on rekindling democracy, alternative economies, neighbourhood re-skilling and community supported agriculture schemes as well as an article about the fantastic 'green' achievements of Nayland Primary school, written by TNs Emma Bishton. Thank you to everyone that has supported the TFP, we had pre-sold almost all of our copies before they had even been delivered.



# Village Players AUDITIONS

for the December 2014 pantomime  
'Jack and the Beanstalk'

There are roles for 12 adults of mixed  
ages for character parts and a small  
young chorus of ages 10-21 yrs

Two auditions will be held in the Church Hall,  
Bear Street, Nayland, open to all on either day:-

Sunday 13<sup>th</sup> July 2014 at 5.00pm and  
Wednesday 16<sup>th</sup> July 2014 at 7.30pm

Enquiries: Nick Moriarty 01206 262808  
Emma Wallis 01206 271366

## Nayland Over 60s LUNCHEON CLUB

A Monthly Lunch for Senior Citizens  
Church Hall ~ 12.00 noon for 12.30 pm ~ £3

Thursday 26 June (*not Tuesday 24*)

Tuesday 15 July :

*Summer Tea Party at Longwood Barn*

No August meeting

Tuesday 23 September

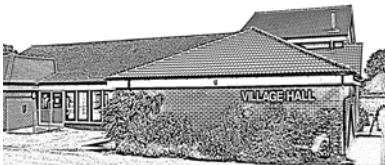
Come along and join the friendly atmosphere for a chat  
with friends, old and new.

If you would like to join us for lunch just come along.  
If transport down to the Church Hall is difficult telephone  
Olga Alexander on 263923 to see if we can collect you.

## FOUND: SET OF HOUSE KEYS

in Nayland on 20th May

Contact 01206 - 262587



## VILLAGE HALL MANAGEMENT COMMITTEE

Registered Charity No 304 928

Chairman: Iain Wright 263646

Secretary: Christine Thompson 262825



## MARCH COMMITTEE MEETING

### MATTERS ARISING AND HOUSEKEEPING BOOK

- A fence that had been erected across an access point to the field and considered unsafe has, at the VHMC's request, been removed by the owners of 32 Newlands Lane.
- Maria Mason is now the administrator for the V.H. Facebook page. She needs the password to access the page.
- A cubicle is needed for the referees' shower.
- It was decided not to box in the sound system.
- An external maintenance check will be carried out by Iain Wright and Mike Hunter.
- The comments book had received no new feedback.
- A new blind has been fixed to the Meeting Room window.
- Rosemary Knox will ask the Parish Council if a report from the VHMC is required for the Parish assembly.

### CONSTITUTION

Mike Hunter has reviewed the Constitution. There are two action points:

- The terms of the Constitution do not match those of the lease. This will be raised this with the Parish Council.
- The VHMC can have more elected members from the societies that use the Hall. Any nominations for representatives would be very welcome.

### YOUTH CLUB

At our request Community Action Suffolk has been asked to mediate between the VHMC and the Youth Club Leader. In the meantime, an undertaking to use best endeavours to manage the Youth Club and its environs has been requested from the Youth Club leader but has not been forthcoming. The VHMC is therefore unwilling to permit the Youth Club to continue until the undertaking is received. Maria Mason will contact the mediator to expedite matters.

### TREASURER'S REPORT

- COIF Endowment £11439, COIF £10826, Debtors £850, Bank £5393, Cash £63, Assets £5957
- The Insurance premium of £1405, the oil bill of £1102 and the Council Tax of £590 have been paid.
- The Youth Club still owe fees for hiring the Hall.

### CINEMA

- Dates for 2014 are: 30 May *Gravity*; 20 June *The Invisible Woman*; 26 September; 31 October and 28 November.
- Nick Moriarty has taken steps to improve the sound system for the cinema.

### BOOKINGS

- Alan Titchmarsh's talk was a great success
- The Suffolk Bridge Association will book the Hall in 2016
- The Essex and Suffolk Hunt are proposing a 60's and 70's disco and a Cheese and Wine Evening with Oz Clark
- Emma Elkin will be contacted about the cancellation of the Youth Club bookings.

### LICENSING

- One licence was signed

### FIRE MATTERS

- The monthly fire check will be carried out.

### VILLAGE HALL ACTION PLAN

- The manual is still being put together; details regarding the lighting are yet to be finalised.

### MAINTENANCE

- The external maintenance requirements for next year will be decided at the next meeting
- The high level barge boards will be painted in the spring.
- Iain Wright will replace the missing ridge tile.
- There are seven outside lights which need replacing. Iain Wright will action.

**NEXT MEETING: Monday 2nd June at 7.30pm.**

# Garden Notes

by The Old Muckspreader



*Tulipa Sprengeri*



*Syringa Palibiniana*

In the back yard at M/S Hall there is a row of outbuildings, one of which was the old kitchen of the house. Since therein is a bread oven, and an open grate with a flue and a chimney. It now serves as a tool shed, potting shed and general gardener's haven. The OM/S spends a good deal of time there, and a few days ago was sawing a piece of wood when he spotted movement; he looked down and spotted a hen chaffinch hopping around on the brick floor, looking for spilled birdseed. He stopped sawing and the bird came within a few inches of his feet. He now makes a point of scattering on the floor regularly and the chaffinch continues her daily visits. The cock chaffinch comes to the adjacent bird table, but is nowhere near so tame. This has never happened before, and we have never attempted to tame chaffinches.

Next door is an open-fronted shed containing our oil tank, where we keep wheelbarrows, wheelie bins and so forth. There is usually a swallows nest in the rafters and they are back again.

The pheasants have lost interest and are presumably nesting somewhere; unlike previous years, they showed no interest in our two drifts of Fritillaries.

Often with the passing of time trees and shrubs grow too tall for their situations. Where this has occurred it's best not to attempt any reduction in size at one go, but rather to cut back a third to a half of the taller branches first and leave the remainder for a subsequent year. Here we are performing this operation on a dwarf Korean Lilac (*Syringa Palibiniana* now called *S. Meyeri Palibin*) We cut the first long branches down last year, and the rest will come down after the flowers have died. In this way the appearance is maintained.

Undoubtedly this is an excellent shrub for a small garden, but is difficult to propagate from cuttings. Occasionally it is possible to detach a small sucker from the base with a bit of root. The OM/s' bush came from his parents' garden many years ago and a skilled gardener in Nayland successfully performed this operation in his garden.

Looking back at his June 2013 article the OM/S saw he made a list of reliable self-seeders; there was however one notable omission, and surprisingly it's a Tulip.

*Tulipa Sprengeri*, the last species to flower, and now just coming out, is a vivid red with golden backed petals and grows to about 1½ feet; it subsequently sets large pods in Autumn each containing hundreds of seeds. The first year's seedlings look like blades of grass, but if undisturbed will gradually increase in size in about 5 years. Few nurseries sell the bulbs, and those that do charge £4 each and upwards. The reason is that the shallow depth of soil in Holland prevents the Dutch from growing them. Here they have spread all over the place, even growing in gravel paths, but are awkward to dig up in Autumn since they descend to 12 inches or so, and often invade herbaceous clumps.

By the time this appears another Church Fete will be over and the plant stall, now into its forty-something year will have disposed of a few hundred plants. That supposes decent weather. Here's hoping.

P.S. Anyone who asks can have *Tulipa Sprengeri* seed, and perhaps a bulb or two in the Autumn. The OM/S' cover must by now have been blow, as they say in the best spy novels, otherwise he is confident that the editor will pass on requests.

## WORDSEARCH: Vegetables

ASPARAGUS

BEANS

BEETROOT

BROCCOLI

CARROT

COURGETTE

LEEK

MARROW

SWEDE

SWEETCORN

SWEETPOTATO

TOMATO

|   |   |   |   |   |   |   |   |   |   |   |   |   |
|---|---|---|---|---|---|---|---|---|---|---|---|---|
| V | C | A | R | R | O | T | W | E | D | E | W | S |
| N | S | P | E | P | T | E | S | U | N | U | U | E |
| R | S | W | Y | T | A | N | W | N | H | G | Y | T |
| O | O | T | E | W | M | O | J | A | A | P | E | O |
| C | X | E | P | E | O | X | H | R | L | E | H | X |
| T | M | O | N | E | T | U | A | K | B | V | B | U |
| E | W | S | E | P | U | P | W | S | K | E | E | L |
| E | O | B | A | S | S | G | O | Z | E | P | E | S |
| W | O | R | R | A | M | N | W | T | X | B | A | O |
| S | H | W | A | L | O | N | R | V | A | P | E | X |
| L | I | L | O | C | C | O | R | B | H | T | N | U |
| A | S | U | N | U | O | C | S | E | P | U | O | W |
| N | W | E | T | T | E | G | R | U | O | C | Y | O |

## ANAGRAMS: Recipes using Elder flowers/berries (to name just a few!)

1 GEPAHCNMA

2 RSPUY

3 RLACIOD

4 TERRSTIF

5 LEJLY

6 EMCCAIEER

7 NEIW

8 URQSILUE

9 AJM

10 SFINMUF

Wordsearch words may be horizontal, vertical, or diagonal and forward or backwards

**Solutions on page 42**



# The Nayland Record

Above: Front page heading of the *Nayland Record*

Below: Blair Lees in 1987

2014 is a year when several long standing organisations in Nayland will be celebrating significant milestones in their histories. It is also the anniversary of the creation 40 years ago of a history journal called *The Nayland Record* which had a major impact on the village we know today, despite the fact that this unique publication was produced for only ten years.

The creator and Editor of *The Nayland Record* was Blair Lees who came to Nayland with his family in 1949 where they lived at Stour House in Court Street. In the 1980s Blair moved to Stourbank Cottage in Bear Street where he lived until he died in 1989. He spent most of his later working life, until he retired, in the British Museum to where he commuted from Nayland. He came to know and love Nayland well and was appointed Parish Local History Recorder in 1973. As a way of fulfilling this role he had the idea of producing a journal of historical and topical items of interest.

The Local History Recorders' Scheme was created by the Suffolk Local History Council which was founded 60 years ago and today most villages in Suffolk have their own Recorder. Its purpose is to establish a network of people across the county to ensure the survival of valuable material for future local historians. Recorders are asked to see that the present is recorded at local level but also to be on the look-out for items of historical interest which might be overlooked or lost for ever.

There had been Recorders in Nayland before Blair Lees but it was he who put Nayland on the map with *The Nayland Record*. Friends in the Anchor Inn in the early 1970s, where we all gathered in the days when John Curtis was the landlord, will remember Blair's enthusiasm for Nayland and its history. When he had the idea of a journal I offered to help him with the practical side of its production which involved typing on old fashioned wax stencils and printing off copies on a Gestetner ink duplicator - a far cry from today's technology!

The first edition of the *Record* was produced in the Spring of 1974 and was just a single sheet explaining its purpose and that future editions would be published quarterly at a cost of 5p. Blair and I put a copy of this through every letterbox in the village.

The contents of the *Record* were mainly historical and Blair also reported on his activities as Parish Recorder. Current events in the village were included and quite a few residents responded to an appeal for contributions on such subjects as nature conservation and the environment; some village groups reported on their activities and all this added to the overall interest. The journal was particularly enjoyed by former residents and our mailing list included people in far flung places at home and abroad. Mr Peter Northeast, Chairman of the Suffolk Local History Council, was full of praise for the journal as it was a good example of what Parish Recorders could do. We were invited to a meeting of the Council where Blair talked about it to fellow Recorders from all over Suffolk.

Despite its brief history the *Record* left its mark in the village in two ways: In the first edition the Editor wrote about "the changing face of Nayland". Before coming to Nayland I had been a secretary for the Colchester Civic Society whose aim was to preserve Colchester's historic buildings at a time of



considerable redevelopment, and in our discussions about the *Record* Blair and I agreed it would be a good idea to have something similar in Nayland. An invitation to attend an inaugural meeting was therefore made in the *Record* to residents who might be interested in forming a "Preservation Society", with the aim of protecting the historic buildings and environment of Nayland. There was a good response to the idea and the Nayland with Wissington Conservation Society was subsequently founded a few months later in the summer of 1974, Blair Lees being its first Chairman. Joan Moore was our first Secretary, Francis Fowke the Treasurer, John Randall and I were Committee members and we were later joined by Fred Hammond and Roy Berry.

The second way in which *The Nayland Record* made an impact on the village was in the creation of the *Community Times* which is celebrating its 25<sup>th</sup> anniversary this year. It could be said *The Nayland Record* was the forerunner to the *Community Times* which was first published in 1989 by the Community Council. The first editor, Keith Worricker, became Parish Recorder after Blair Lees had resigned through ill health. Keith chose not to continue his predecessor's *Nayland Record* which had ceased a few years earlier, but he and others were aware that there was a need for another regular magazine for the village and so began the *Community Times*.

Despite the somewhat ephemeral nature of his journal I am sure that Blair Lees would have been pleased that two important features of our village which were inspired by *The Nayland Record* are still in existence today.

**Wendy Sparrow, Parish Recorder**



# Calendar

The photographic competition to generate images for the 2015 Nayland with Wissington Calendar was held on 5th May. It was wonderful to see new interest in the competition; this year there were 80 beautiful images submitted by 20 photographers, once again making selection of just twelve scenes very difficult indeed.

The judge, Geoff Meadowcroft, was impressed by the marvellous variety of views and community activities that had been represented. He was particularly encouraged that two young residents, 11 year old Rosie Maguire and 12 year old Oliver Hughes, were taking good compositions.

The photographs selected were submitted by Sandra Gibbons, Graham Wiles, Mike Hunter, David Negus, Drina May, Andora Carver, Nigel Evans, Kathrine Maguire, Lorraine Brooks, Hazel Gardiner and Wendy Sparrow.

A steady stream of visitors popped in to the view the display; those of you who did not will have to wait for the calendar to see the selected entries. However, shown here are a few of the delightful images submitted and on show at the exhibition. As hoped entries represented the different seasons with our range of weather conditions, and once again night scenes were included. Subjects ranged from village activities and events, such as the Church Fete, Open Gardens, Scarecrow Competition, to parish landmarks, such as Wiston Mill and Nayland Post Office. There were a variety of street scenes, views of the meandering river Stour, the countryside and farming views. There were also some interesting natural and architectural features including St James' clock face and Popp's Bridge.



*St James' churchyard, Oliver Hughes (age 12)*



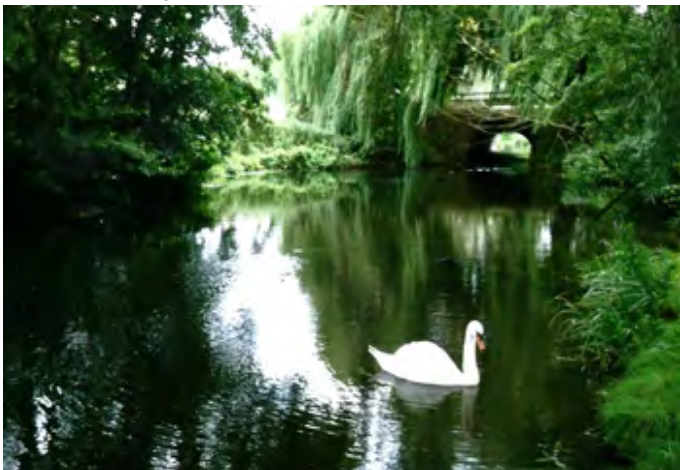
*Mill Lade, Rosie Maguire (age 11)*



*Church Passage, Mike Almond*



*Socket Alley, Trevor Smy*



*River Stour, Mike Hunter*



*St James Churchyard Garden Party, Andora Carver*



# Competition

Another online digital photo album will be produced with this year's stunning competition entries and it will be available to view on [www.naylandandwiston.net](http://www.naylandandwiston.net), village calendar page.

The images selected for inclusion in the calendar will be matched up with interesting old images of the village and historic detail will be added by Wendy Sparrow. A limited edition of the village calendar will be on sale at the Flower Show in the Village Hall on 2nd August – don't miss out!

View these images in the colour version of the Community Times at [www.naylandandwiston.net](http://www.naylandandwiston.net), Community Times page.



*Fen Street, Antony Day*



*Rainbow over Anchor Inn, Claire Buller*



*Post Office, David Negus*



*View of St James from Stoke Road, Jane Lane*



*Court Street at night, David Rowe*



*View of Nayland Meadow, Anne Spencer*



*Rush hour at Nags Corner, Graham Wiles*



## VILLAGE PLAYERS' THE MIRACLE WORKER



The Village Players' latest production, *The Miracle Worker* by William Gibson, was a triumph, underlined by the remarkable performances of the two leading characters.

Based on the true story of Helen Keller - blind, deaf and dumb - and her teacher and governess Annie Sullivan, the play, staged at Nayland village hall, was both moving and inspiring.

Sixteen-year-old Kate Edwards was a delight as Annie, slowly teaching Helen words by way of hand signals and how to relate to her parents who had previously allowed her to run wild.

Although she had no words, 13-year-old Vhari Lane's interpretation of Helen was quite exceptional. The strong cast all did well, notably Jim Bond as Helen's blustering father and Sharon Pentney as her caring mother.

The stage was cleverly divided to represent the Kellers' home, an outside area, an institute for the blind, a railway station and the Kellers' garden house.

Directed by Bryan and Jenny Smith, this absorbing play was much appreciated by audiences and is another memorable production for the group.



## Jane Walker, Independent Safari Consultant

Photographic, walking, bird-watching, horse-riding. Bookings ATOL / AITO bonded.



Farthing Hall, Nayland with Wissington  
[woodbridgesafaris.co.uk](http://woodbridgesafaris.co.uk) / [horsebacksafaris.co.uk](http://horsebacksafaris.co.uk)  
 01206 262352, [janew@safariconsultantuk.com](mailto:janew@safariconsultantuk.com)





## BERYL NEVARD

A former long-standing and much respected Nayland resident, Beryl Nevard, died on March 24 aged 96.

Born in Harwich, she began her working life at the Co-op and was made manager of the drapery department. She also helped run the Girl Guides and Rangers and in the evenings did her bit for the war effort by becoming a fire officer.

Mrs Nevard married her late husband George in 1948 and the couple moved to Nayland in 1950 where she became an active member of the community. She was a founder member of Nayland Women's Institute and also belonged to the Mothers' Union, horticultural society and the parochial church council. Her keen interest in being a member of the church congregation led her to help with the Sunday School as well.

Despite her busy community life she also found time to join an art club. Knitting was another skill and she produced a plethora of jumpers to send to a mission in Africa along with numerous patchwork blankets.

Her husband died in 1990 and eight years ago, unable to cope on her own, Mrs Nevard moved into Hazell Court in Sudbury.

She leaves two children, Margaret and Edward, four grandchildren and six great-grandchildren.

The funeral at St James's Church on April 10 was conducted by the Rev Adrian Mason.

## Feedback from James Finch - Your Stour Valley County Councillor

During April and May I have been addressing all my parish annual meetings as I did in Nayland on 12<sup>th</sup> May. For those who were unable to attend I list five of the key achievements of your County Council this last year which were part of my presentation.

### SCC DELIVERS ON COUNCIL TAX FREEZE PLEDGE

SCC's portion of council tax will be frozen at its 2010/11 level for the fourth year in a row, after the council voted through its budget proposals for 2014/15 in February this year. The council will be saving £38.6million over the next year to meet a budget gap caused by on-going reductions in government grant and increased demand for services. This is the first part of plans to save £156million over four years. Despite the tough financial climate, the council will be pushing ahead with important projects, such as 'Raising the Bar' (driving up attainment levels in education), the roll-out of super-fast broadband across the whole of Suffolk, investing in apprenticeships, and supporting the development of 10 new, state-of-the-art care homes for older people. At the same time, the road maintenance budget – used for fixing potholes – has been protected from cuts. With plans to freeze council tax each year up to 2017, **this will mean seven years with no increase.**

### RAISING THE BAR IN EDUCATION

A report which produced a series of recommendations aimed at driving up educational standards in Suffolk was endorsed by the county council in July last year.

The report was produced by the RSA, under the auspices of the county council's 'Raising the Bar' initiative. Raising the Bar was launched last year, as a major project to improve attainment levels and build a stronger aspirational culture around education in Suffolk. The RSA's report, 'No School is an Island', contained 20 recommendations. Among these was the idea that small rural schools with fewer than 100 pupils should enter a federation with others to maximise resources. We are extremely lucky in Nayland to have a primary school that is outstanding which can contribute to the betterment of other schools less fortunate than ours.

It is also pleasing to report that those GCSE and A levels results are improving. However I do recognise that there is still work to be done to continue to improve our standards which is a joint responsibility of all involved in the education of our children.

### GREATER IPSWICH CITY DEAL SIGNED

Local councils and businesses have signed the deal with the Government which will bring in £millions of new investment for the local economy.

The Greater Ipswich City Deal will see thousands of people supported into work and millions invested in Ipswich and the surrounding Babergh area which includes Nayland.

### CEREMONY MARKS 1<sup>ST</sup> YEAR OF CARE-HOME PARTNERSHIP

In December, the first anniversary of the partnership between Suffolk County Council and Care UK – which is building state-of-the-art care homes across the county – was marked with a topping-out ceremony. This new care home and wellbeing centre, at the site of the former Davers Court in Shakers Lane, is part of a £60million three-year plan for 10 similar new developments. In December last year Care UK began operating SCC's 16 care homes and eight wellbeing centres.

One year on, construction of seven of the 10 new developments is under way as part of the phased modernisation programme.

### EXTRA BROADBAND FUNDING CONFIRMED

Suffolk is being given an extra £5million from the government to help make high-speed fibre broadband available to the hardest-to-reach communities.

The news comes as Suffolk's Better Broadband programme passes the 27,000 property mark. Last month's announcement about new funding means that the Better Broadband for Suffolk programme, currently working to make superfast speeds (24 megabits per second (mbps) or more) available to **85% of the county, can start working towards a higher coverage target of up to 95%.** Every three months between now and to the end of the project, a further 10,000 properties should receive access to broadband. The programme is on schedule to provide Nayland with Superfast Broadband in the first quarter of 2015.

### MY COUNTY COUNCIL ROLE IN 2014 – 15

I am honoured to have been asked to continue to chair the County Council Scrutiny Committee. Our most recent meeting has been reviewing the Kier MG contract and seeking improvements in this service for our communities. In addition I have been given the responsibility for the County Council Farms Estate and developing a programme more suited for those wanting to access the farming industry and providing better value for the residents of Suffolk. I also represent the County on our Dedham Vale AONB and Stour valley project.

*If you require more information on any of these programmes please do not hesitate to ask.*

**James Finch - Suffolk County Councillor -  
Stour Valley Division**

*Assington, Boxford, Bures St Mary, Edwardstone, Groton, Leavenheath, Lindsey, Little Cornard, Milden, Nayland with Wissington, Newton, and Stoke by Nayland*

**Tel 01206 263649 Mobile 07545 423796**

## SEE IT, SNAP IT, SEND IT...



Hail storm in Mill Street, taken by Andora Carver. There may not have been any snow this year but our weather in the past year has provided variety and the odd dusting of white!

If you have a snapshot taken in the parish to feature in a future issue please send it to [lorraine.nayland@btinternet.com](mailto:lorraine.nayland@btinternet.com)



## FREE PARK & RIDE for the TASTE OF SUDBURY FOOD & DRINK FESTIVAL 22<sup>nd</sup> June 2014

There will be a free park and ride from the Delphi Car Park, Newton Road, Sudbury CO10 2RR starting at 10.45am and the free bus will leave every 15 minutes. The bus with wheelchair access will drop visitors off outside the Town Hall where the last bus will leave at 6pm. Please note that no bus will be running between 2pm and 3pm. The event has free entry and all car parks are free in Sudbury on the day.

The Taste of Sudbury Food & Drink Festival promotes the best food and drink provided by local and national producers, growers and restaurants on the Suffolk/Essex border in the historic market town of Sudbury. Lesley Dolphin of BBC Radio Suffolk will open the event and Mark David from the Cooking Experience will comper the cookery demonstrations which will take place throughout the day by top local chefs.

For up to date information on the event visit [www.tasteofsudbury.co.uk](http://www.tasteofsudbury.co.uk).

## Old Nayland Classmates

I am trying to locate old classmates from the Nayland area who were in my class, 1948 - 1953, at Sudbury Grammar School. If anyone has any information them or their contact details I would be grateful if they would contact me.

Their names are: John Ashworth (Assington), David Britton (Leavanheath) and Philip Raynham (Assington)

**Charlie Barber,**

01449 721848 Or [cwbarber01@hotmail.com](mailto:cwbarber01@hotmail.com)

## Nayland Fundraising Committee

A coffee morning held by the Nayland Fundraising Committee at the church hall on April 26 raised more than £680 for Medecins sans Frontieres (MSF or Doctors without Borders).

Secretary Caroline Lowe thanked everyone who gave donations or came and supported the event.



Welcome to this month's Police news item.

### DISTRACTION THEFTS at SUPERMARKET

Suffolk Constabulary are asking members of the public to be aware of Distraction Thefts at large Supermarkets across Suffolk and to assist the police in preventing distraction thefts at these premises.

Since 1<sup>st</sup> October 2013, there have been 19 offences reported to police where shoppers at supermarkets have been distracted by someone when they left the store or returned their trolley to the trolley park.

The offenders are known to target older people or people parked in disabled parking areas.

Known to work in pairs or more, it is thought the organised groups identify their victim and follow them whilst shopping, taking note of their PIN at the check-out.

The victim is then approached either at the till, at their vehicle whilst unloading or when returning their trolley, by someone advising they have dropped some money, have a nail in their tyre or asking for directions.

Whilst the victim is distracted a second person will steal their bank card from their pocket, car or trolley.

The offenders leave without being noticed and the bank card is often used within a few minutes to withdraw money from a nearby ATM using the PIN number seen at the check-out.

**ARE YOU BEING SCAMMED?** People are watching people for their PIN numbers and then stealing their debit/credit card. Elderly or vulnerable people are being targeted please be vigilant.

What to look for:

- People who are likely to be observing customers/shoppers and may not appear to be shopping themselves
- One offender often loiters around the bagging side of checkouts. They will use a seat if available and will observe customers/shoppers
- The offender will loiter on the store side of the checkouts and will join the queue directly behind potential victim who is usually elderly
- This offender will stand close to the victim as they enter their PIN and may attempt to distract the cashier by asking questions
- The victim will then be approached in the car park and their bank card will be stolen

#### WHAT TO DO:

- Call 999 immediately if a crime is in progress otherwise call 101
- Observe offenders – Make a note of their description and any vehicles they use including:
  - ~ Vehicle – registration/make/model/colour/occupants/damage/stickers
  - ~ People – clothing/tattoos/scars/hairstyle and colour
- Speak to the victim and ask them to return to the store

#### HOW DISTRACTED ARE YOU?

Distraction thefts have occurred recently in supermarket car parks.

#### PROTECT YOURSELF BY:

- Taking care when entering your PIN number. Cover the pad and don't let anyone see it.
- Don't keep your PIN in the same place as your cards.
- Put your purse or wallet straight back into a zipped bag across your body or zipped pocket.
- Be cautious and don't be distracted if anyone approaches you.

**Mandy, PCSO 3108 Coleman**





## CHURCH SERVICES: JUNE & JULY 2014

Nayland, Wiston, Leavenheath, Stoke by Nayland & Polstead

| Date                   | Time    | Venue       | Service              | Priest / Leader      | Time    | Venue       | Service      | Priest / Leader      |
|------------------------|---------|-------------|----------------------|----------------------|---------|-------------|--------------|----------------------|
| 25 <sup>th</sup> May   | 8.00am  | Nayland     | NO SERVICE           | -                    | 11.00am | Stoke       | HC 2         | Rev'd John Fowler    |
| Easter 5               | 9.30am  | Leavenheath | HC 1                 | Rev'd Jackie Sephton | 11.00am | Polstead    | HC 1         | Rev'd Jackie Sephton |
| Rogation               | 9.30am  | Nayland     | MP                   | David Pryor          | 3.00pm  | Nayland     | Ride & Tea   | -                    |
| 1 <sup>st</sup> June   | 8.00am  | Stoke       | HC 2                 | Rev'd John Fowler    | 11.00am | Polstead    | MW           | Rev'd Jackie Sephton |
| Ascension 1            | 9.30am  | Nayland     | HC 1                 | Rev'd Jackie Sephton | 11.00am | Wiston      | HC by ext    | David Pryor          |
|                        | 10.00am | Leavenheath | First Sunday         | Rev'd Val Armstrong  | 6.30pm  | Stoke       | Evensong     | Jane Addis           |
| 8 <sup>th</sup> June   | 9.30am  | Leavenheath | MP                   | David Rowe           | 11.00am | Polstead    | HC 2         | Rev'd Adrian Mason   |
| Whit Sunday            | 9.30am  | Nayland     | FC                   | Rev'd Adrian Mason   | 6.30pm  | Nayland     | Evensong     | Kath Hunt            |
| aka Pentecost          | 11.00am | Stoke       | MP                   | David Rowe           |         |             |              |                      |
| 15 <sup>th</sup> June  | 8.00am  | Polstead    | HC 2                 | Rev'd Adrian Mason   | 11.00am | Polstead    | FS & Baptism | Rev'd Jackie Sephton |
| Trinity Sunday         | 9.30am  | Leavenheath | HC 2                 | Rev'd Adrian Mason   | 11.00am | Wiston      | HC 1tr       | Rev'd Val Armstrong  |
|                        | 9.30am  | Nayland     | HC 1                 | Rev'd Val Armstrong  | 6.30pm  | Leavenheath | Evening Pr   | Rev'd Adrian Mason   |
|                        | 11.00am | Stoke       | HC 1                 | Rev'd Adrian Mason   |         |             |              |                      |
| 22 <sup>nd</sup> June  | 8.00am  | Nayland     | HC2                  | Rev'd Adrian Mason   | 11.00am | Stoke       | HC 2         | Rev'd John Fowler    |
| Trinity 1              | 9.30am  | Leavenheath | HC 1 VH              | Rev'd Adrian Mason   | 11.00am | Polstead    | HC 1         | Rev'd Jackie Sephton |
|                        | 9.30am  | Nayland     | MP                   | David Pryor          | 6.30pm  | Wiston      | Evensong     | David Pryor          |
| 29 <sup>th</sup> June  | 10.30am | Nayland     | Benefice Service HC1 | Rev'd Adrian Mason   |         |             |              |                      |
| St Peter               |         |             |                      |                      |         |             |              |                      |
| 6 <sup>th</sup> July   | 8.00am  | Stoke       | HC 2                 | Rev'd Adrian Mason   | 11.00am | Polstead    | MW           | Jim Sephton          |
| Trinity 3              | 9.30am  | Nayland     |                      | Rev'd Adrian Mason   | 11.00am | Wiston      | HC           | Rev'd Adrian Mason   |
|                        | 10.00am | Leavenheath | First Sunday         | Rev'd Val & team     | 6.30pm  | Stoke       | Evensong     | Jane Addis           |
| 13 <sup>th</sup> July  | 9.30am  | Leavenheath | MP                   | Rev'd Adrian Mason   | 4.00pm  | Polstead    | Gospel Oak   | Rev'd Jackie Sephton |
| Trinity 4              | 9.30am  | Nayland     | HC1                  | Rev'd Val Armstrong  | 6.30pm  | Nayland     | Evensong     | DP/KH                |
|                        | 11.00am | Stoke       | MP                   | Rev'd Adrian Mason   |         |             |              |                      |
| 20 <sup>th</sup> July  | 8.00am  | Polstead    | HC2                  | Rev'd John Fowler    | 11.00am | Stoke       | HC 1         | Rev'd Adrian Mason   |
| Trinity 5              | 9.30am  | Leavenheath | HC2                  | Rev'd Val Armstrong  | 11.00am | Polstead    | FS           | Jim Sephton          |
|                        | 9.30am  | Nayland     | HC1                  | Rev'd Adrian Mason   | 11.00am | Wiston      | HC1tr        | Rev'd John Fowler    |
|                        |         |             |                      |                      | 6.30pm  | Leavenheath | Evening Pr   | tbc                  |
| 27 <sup>th</sup> July  | 8.00am  | Nayland     | HC2                  | Rev'd Adrian Mason   | 11.00am | Stoke       | HC 2         | Rev'd Adrian Mason   |
| Trinity 6              | 9.30am  | Leavenheath | HC 1                 | Rev'd Adrian Mason   | 11.00am | Polstead    | HC1          | Rev'd Jackie Sephton |
|                        | 9.30am  | Nayland     | MP                   | DP/KH                | 4.00pm  | Stoke       | Messy Ch     | VA/JS & Team         |
|                        |         |             |                      |                      | 6.30pm  | Wiston      | Evensong     | DP/KH                |
| 3 <sup>rd</sup> August | 8.00am  | Stoke       | HC 2                 | tba                  | 11.00am | Polstead    | MW           | tba                  |
| Trinity 7              | 9.30am  | Nayland     | HC 1                 | tba                  | 11.00am | Wiston      | HC           | tba                  |
|                        | 10.00am | Leavenheath | First Sunday         | tba                  | 6.30pm  | Stoke       | Evensong     | tba                  |

Key: FS : Family Service, FC : Family Communion, HC 1 / 2 : Holy Communion 1 or 2, PC : Parish Communion, MP : Morning Prayer, MW : Morning Worship, EP : Evening Prayer, EPraise : Evening Praise, B : Baptism, *Worship leaders are subject to change.*

### Weekday Services and Groups

|                        |                                                                                                              |
|------------------------|--------------------------------------------------------------------------------------------------------------|
| Bible Study            | 18 Laburnum Way (Rita Dibble 262580): Mondays 7.30pm 2nd June, 16th June, 30th June, 14th July & 28th July   |
| Latin American Pr. Grp | 18 Laburnum Way (Rita Dibble 262580): 7.30pm Monday 11th August                                              |
| Parkers Way            | Communion: Tuesdays 10.15am 17th June & 15th July (3 <sup>rd</sup> Tuesday of month)                         |
| Parkers Way            | Prayer & Praise Service: Wednesdays 3pm 4th June, 2nd July & 6th August (1 <sup>st</sup> Wednesday of month) |
| Nayland House          | Holy Communion: Every Wednesday 10.45am                                                                      |
| Pram & Toddler Service | St. James Church: 2 pm 13th June & 11th July (2 <sup>nd</sup> Friday of month - Rachel Hitchcock 263169)     |
| Messy Church           | Sunday 27th July at St Mary's Church, Stoke by Nayland 4pm until 6pm                                         |

### Other Dates for your Diary

Monday 26th May Nayland Church Fete 2pm-4pm Webb's Meadow

Sunday 28th Sept Early warning for Harvest Festival - St Mary's Wiston at 6.30pm



*Dear all,*

Saint Roch was born in France in 1295 and he died in 1327. On a pilgrimage to Rome he ministered to many suffering from the plague and during that time he was attacked and injured in his thigh. It is reputed that he survived because a dog licked his wounds and brought him food. During his life many miracles of healing are attributed to Saint Roch and if you travel through France you may well see statues of him. They take the form of him standing up holding a staff and bleeding from a wound in the thigh. There is usually a dog sitting at his feet. I write this from Baska Voda which is a beautiful seaside village on Croatia's Adriatic coast. Yesterday we walked up to Bast an ancient village set about 3 kilometres from the coast. I was surprised to find that a very old church in the village was dedicated to Saint Roch and wondered what the connection between the Saint and the church was.

Just as Saint Roch travelled as a pilgrim Saint Cedd travelled from Northumbria and is thought to have preached under an ancient Oak in the grounds of Polstead Hall and as I thought of travel and pilgrimage the poem **Footprints** came to mind. It was written in 1936 by a Canadian Mary Stevenson. She had been walking along a lake in the moonlight with her boyfriend who had proposed that they get engaged and that night unable to sleep she wrote **Footprints**.

One night I had a dream. I dreamed I was walking along the beach with God and across the sky flashed scenes from my life. I noticed two sets of footprints in the sand, one belonged to me and the other to God.

When the last scene of my life flashed before us I looked back and saw only one set of footprints in the sand.

I noticed that at times along the path of life there was only one set of footprints. I also noticed that it happened at the very lowest and saddest times of my life. This really bothered me and I questioned God about it.

"God you said that once I decided to follow You, You would walk with me all the way but I noticed that during the most troublesome times in my life when I needed You most, You would leave me?"

God replied "My precious, precious child I love you and would never, never leave you during your times of trials and suffering. When you see only one set of footprints in the sand it was then that I carried you."

I pray that as you read this poem you too will feel the presence and love of God and that it will bring You peace.

*Every Blessing, Jim Sephton*

## Church News

### ST MARY'S, WISTON - BOOKS FOR SALE

Take a walk on the footpath which runs past St Mary's Church, Wiston, and call in to look at the second hand books for sale in the church porch - cookery, biographies, children's, fiction, etc. Last year's book sales paid for the electricity used in the church. If anyone has any books to donate please leave them at the back of the church, they will be gratefully accepted. Thank you.



### Christian Aid Week 11-17 May

A large thank you to all the collectors and the donors for all your support - more details in the next issue.

**Nicola Thorogood Local Organiser**

## CHURCH CONTACT DETAILS ON PAGE 38

### Weekday Services

#### Monday

|                |         |         |
|----------------|---------|---------|
| Morning Prayer | 9.00 am | Nayland |
| Evening Prayer | 5.00 pm | Nayland |

#### Tuesday

|                |         |             |
|----------------|---------|-------------|
| Morning Prayer | 8.30 am | Leavenheath |
| Evening Prayer | 5.00 pm | Nayland     |

#### Wednesday

|                |         |          |
|----------------|---------|----------|
| Morning Prayer | 9.00 am | Polstead |
| Evening Prayer | 5.00 pm | Wiston   |

#### Thursday

|                |         |         |
|----------------|---------|---------|
| Morning Prayer | 9.00 am | Stoke   |
| Evening Prayer | 5.00 pm | Nayland |

## ST JAMES' ANNUAL PAROCHIAL MEETING

Nayland St James Annual Parochial Church Meeting was held in the Church Hall on Monday 7<sup>th</sup> April. It was attended by members of the PCC and a small number of parishioners. Revd Adrian Mason chaired the meeting. Kathy Hunt and James Carver were re-elected Churchwardens and John Baker was re-elected as Lay Chair of the Council and Deputy Churchwarden. Existing PCC members wishing to continue on the Council were re-elected unopposed; Mrs Margaret Geater was elected onto the PCC and appointed Deanery Synod Representative along with James Carver. Anita Connor-Hughes was appointed Secretary to the PCC, having been elected onto the PCC last year and appointed Joint Minutes Secretary along with Jane Gordon-Chauvet who was also elected onto the PCC last year. James Finch has stood down from the PCC. Sandra Pryor was elected onto the PCC. Lists of all appointments will be posted on the church notice board in due course. The new Electoral Roll stands at 70 names.

The PCC annual report was presented by Revd Mason alongside reports covering many aspects of church business and activity. Alex Murrison (Chair, Fabric Committee) reported on the lengthy progress involved in obtaining planning permission for the gate on the north east side of the churchyard leading to the Village Hall. A report from Andora Carver on behalf of the Nayland Fete Committee stated that the 2013 event had raised £13,471, the highest surplus ever achieved and paid tribute to the hard work of the committee and the strength of support from the local community. Other reports identified the contributions made by the church bell ringers, the church choir and visiting musicians, church cleaners, members of the flower rota, those who manage the church hall, and to all the volunteers who make up the Churchyard Working Party and the volunteers on the churchyard mowing rota.

Revd Mason recorded his thanks for the continuing work of the PCC, members of the congregation and of the local community in their support for the Church and its Ministry.

## FROM THE REGISTERS



### FUNERAL

Doris Emily Green  
Olive Beryl Nevard  
Norman Walton

### BAPTISM

Lizzie Skells

### MARRIAGE

Ross Thompson & Hannah Wilkinson  
Jonathan Hawkes & Rebecca Baker  
Miles Dagnall & Elizabeth Cash



**We are very busy in your area**

**Boydens**  
SALES & LETTINGS

## The final piece...

- Chartered surveyors & estate agents
- Residential & commercial
- Lettings & management
- Block management
- Suitably qualified and experienced staff
- Local knowledge
- Unique service - available to all who seek professional guidance
- Four generations family business building on over 150 years' in the Colchester area.

**Call or visit us at:**  
Aston House  
57-59 Crouch Street  
Colchester CO3 3EY  
Tel: 01206 762244

Branches in:  
Braintree, Kelvedon, Sudbury  
Frinton-on-Sea & Ipswich



[www.boydens.co.uk](http://www.boydens.co.uk)

RICS AIFA NAEA ARHA



**14-15 JUNE** ...don't forget it's Father's Day on the 15th!

## SUMMER BEER FESTIVAL

**FREE ENTRY**

A great selection of regional cask ales  
Live music  
Delicious food  
Family fun entertainment

Check out all of our Summer events at  
[www.anchornayland.co.uk](http://www.anchornayland.co.uk)

The Anchor Inn, 26 Court Street, Nayland, CO6 4JL  
[www.anchornayland.co.uk](http://www.anchornayland.co.uk) | 01206 262313

**MARY - ANNE MORRISON**  
MILLINERY



+44 (0) 1206 262391 +44 (0) 7850 571879  
[hats@mamorrison.co.uk](mailto:hats@mamorrison.co.uk)  
[www.mamorrison.co.uk](http://www.mamorrison.co.uk)

# Matthew Douglas

## Independent Financial Advisers

*Do you need your savings to work harder?  
Is your income sustainable for the long term?  
Are your assets risk controlled?  
Are they tax efficient?  
Would you like some confidential advice?*

**"Money matters made Simple"**

Telephone, e-mail or just drop in to arrange a free, no obligation consultation with a professionally qualified independent adviser.

**4 Church Mews  
High Street  
Nayland CO6 4JF**

Telephone: 01206 265904  
Email: [info@matthewdouglas.co.uk](mailto:info@matthewdouglas.co.uk)  
Website: [www.matthewdouglas.co.uk](http://www.matthewdouglas.co.uk)

Matthew Douglas Limited is authorised and regulated by the Financial Services Authority.





Member No. GO33



## MAKE IT A GOOD MOVE



### ASK US FOR ADVICE ON MOVING

- UK door to door
- Storage services
- Commercial archive storage
- European door to door
- Commercial office moves
- Packing materials included

#### Good Move Removals & Storage

Unit 1, Holly Lodge, Holly Lane, Great Horkesley, Colchester CO6 4AW

**Colchester 01206 272780**

**Ipswich 01473 288110**

Email [guy@goodmove.org.uk](mailto:guy@goodmove.org.uk) Website [www.goodmove.org.uk](http://www.goodmove.org.uk)

## WHITTLE & CO.

Chartered Accountants



## Let us put you in the picture

Business advisory, tax, audit and accounting services for companies, charities, trusts and individuals.

Century House South, North Station Road,  
Colchester CO1 1RE. Telephone: 01206 762200.

15 High Street, West Mersea, CO5 8QA.  
Telephone: 01206 385049.



[www.whittles.co.uk](http://www.whittles.co.uk)



## Ian Harris Ltd

### design and building services

*We are an established Suffolk building company with many years experience working on country houses and cottages*

#### DESIGN AND PLANNING

We will discuss your requirements, design and prepare drawings for Planning and Listed Building applications.

#### GENERAL BUILDING

We undertake all aspects of general building to include new build, conversions, extensions, alterations and maintenance. Our speciality is for carrying out work to all types of period buildings with a particular understanding of the needs of historic and Listed Buildings.

#### JOINERY

We have our own joinery workshop working alongside the general building works designing, making and fitting purpose-made joinery such as windows, doors, stairs, frames and fitted furniture for any part of the house.

Contact us by phoning on:

**01206 263632**

Or e-mail us on [ian@ianharris.ltd.uk](mailto:ian@ianharris.ltd.uk)

Campions Hill Barn, Wissington, Nayland CO6 4NL



## SMALL ADVERT COLUMN

Nayland and Wiston residents may place free adverts for items valued at under £50. Items £50 and over incur a charge of £5.

### FOR SALE:

**MAXI COSI PRIORI XP CAR SEAT** for child 9-18kg. Reclines for sleeping position. Fits to seat belt. Was £110 new. Sell for £30. 01206 262331

**PRAM 'OUTLOOK' SUN CANOPY** fits all types of pram. Pocket sized when folded. Was £25. Sell for £5. 01206 262331

### FREE:

#### BAGS OF SHREDDED PAPER

Available from Matthew Douglas, 4 Church Mews (opposite Post Office) between 9-5, or telephone 265904.

### WANTED:

**POSTAGE STAMPS** for East Anglian Air Ambulance. Please leave them in box in the Post Office.

**UNWANTED BICYCLES** for Re-cycle Bicycles to Africa, [www.re-cycle.org](http://www.re-cycle.org). Contact Iris Sebba 262632 or take them to the Re-Cycle Depot: Unit 2 Gunfleet Business Park, Brunel Way (off Wyncolls Rd), Colchester CO4 9QX Tel: 01206 841268

**BATTERY RECYCLING** – box in the Post Office.

## TO ADVERTISE:

Contact Editor: Lorraine Brooks Tel: 262807

E-mail: [naylandcc@yahoo.co.uk](mailto:naylandcc@yahoo.co.uk)



## Nayland Farmers Market is UNDER NEW MANAGEMENT

### 2nd SATURDAY OF EVERY MONTH

10am -1pm

Nayland Village Hall

### 2024 Dates:

SATURDAY 14th JUNE

SATURDAY 12th JULY

SATURDAY 9th AUGUST

SATURDAY 13th SEPTEMBER

SATURDAY 11th OCTOBER

SATURDAY 8th NOVEMBER

SATURDAY 13th DECEMBER

### FREE ENTRY

Come along and support your local economy!

[www.suffolkfarmersmarkets.org.uk/nayland](http://www.suffolkfarmersmarkets.org.uk/nayland)

## Personalised Playing Cards

**Spingold**  
Design & Print

### Ideal for:

- ♠ Special Events
- ♥ Corporate Gifts
- ♣ Birthday Presents
- ♦ Promotional Material
- ♠ Wedding Favours/Gifts



### Personalised Backs

**1** custom image on the card backs, with standard playing card faces.

### Personalised Fronts & Backs

**54** different images on the faces of the cards, plus a back image.

| Number of Packs    | Single Sided Personalisation | Double Sided Personalisation |
|--------------------|------------------------------|------------------------------|
| 1 Pack (per pack)  | £18.00                       | £33.00                       |
| 2 Packs (per pack) | £13.20                       | £20.40                       |
| 5 Packs (per pack) | £9.00                        | £10.80                       |

*Please enquire for details on larger quantities, orders of 100+ packs can have a bespoke printed box too!*

[www.spingold.co.uk](http://www.spingold.co.uk)

**01206 262751**

Spingold Design & Print Ltd.  
The Studio | Harpers Hill | Nayland  
Colchester | Essex | CO6 4NT

## ST. JAMES' CHURCH HALL HIRE CHARGES (from 1 April 2014)

|                                       |        |
|---------------------------------------|--------|
| <b>Monday – Friday</b> (Hourly Rates) | £5.00  |
| <b>MINIMUM CHARGE</b> (2 hours)       | £10.00 |
| <b>Weekends</b> (Hourly Rates)        | £6.00  |
| <b>MINIMUM CHARGE</b> (2 hours)       | £12.00 |

During Winter: Heating Vouchers @ £1 each

Bookings: online at [www.naylandandwiston.net](http://www.naylandandwiston.net)  
or Anna Boon 262780 [annaboone@btinternet.com](mailto:annaboone@btinternet.com)  
Collect Key from 43 Bear Street

## NAYLAND VILLAGE HALL HIRE CHARGES (from 1 April 2014)

Inc: Hall, Stage, Kitchen & Bar - Changing Rooms: £20 extra per session  
Licence to provide Alcohol £20 extra

| Sunday – Friday Hourly Rates | Residents | Non Residents |
|------------------------------|-----------|---------------|
| 9am – 6pm (April-Sept)       | £10.00    | £13.50        |
| 9am-6pm (Oct-March)          | £11.00    | £15.50        |
| 6pm-midnight (April-Sept)    | £11.00    | £15.50        |
| 6pm-midnight (Oct-March)     | £12.00    | £17.50        |

**MINIMUM HIRE: 2 HOURS RESIDENTS – 3 HOURS NON RESIDENTS**

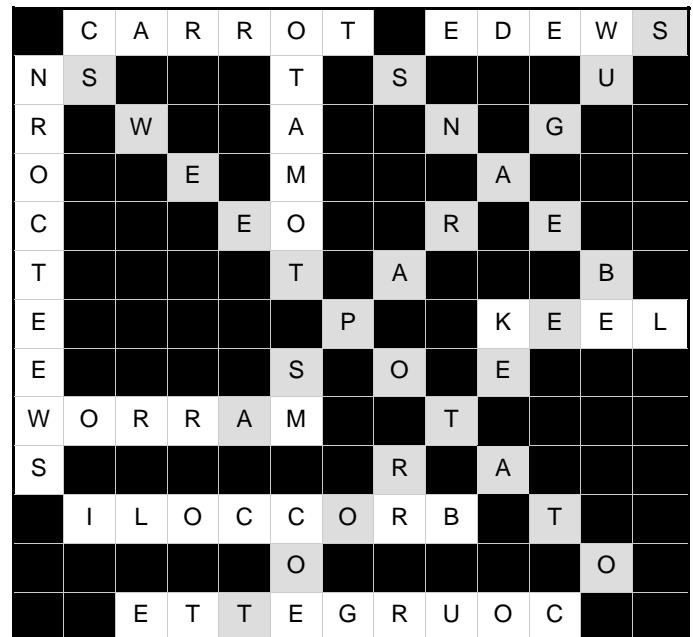
### Saturday

| Daytime until 6pm                    | Hourly Rates as above |         |
|--------------------------------------|-----------------------|---------|
| Evening 6pm-midnight                 | £140.00               | £210.00 |
| All day until 6pm                    | £90.00                | £110.00 |
| All day until 6pm with playing field | £140.00               | £160.00 |
| Playing Field only                   | £50.00                | £50.00  |
| Playing Field & Changing Rooms       | £70.00                | £70.00  |
| Meeting Room only (3 hour session)   | £15.00                | £21.00  |

Reduced terms for use of the hall over a period can be negotiated  
with the Treasurer, Peter Mann 01206 262830

Bookings: online at [www.naylandandwiston.net](http://www.naylandandwiston.net) or  
**Sara Strover 07748 953175** [naylandvillagehall@yahoo.co.uk](mailto:naylandvillagehall@yahoo.co.uk)

## WORDSEARCH



## ANAGRAM SOLUTION

1. Champagne, 2. Syrup, 3. Cordial, 4. Fritters, 5. Jelly,
6. Ice Cream, 7. Wine, 8. Liqueurs, 9. Jam, 10. Muffins



**CHEAPER  
HEATING OIL  
& COAL**

**Together We Save**  
on  
***horkesleybuyers.com***

Join us and start saving on your fuel

## BUS TIMETABLES Service 84 (NS = Not Saturdays, Sch = Schooldays only, SHol = Saturdays & weekdays during School Holidays only) From 2nd September 2013

| Sudbury – Newton Green – Assington – Leavenheath – Stoke by Nayland – Nayland – Gt Horkesley – General Hospital – Colchester |       |       |       |       |       |       |       |       |       |       |       |       |       |       |
|------------------------------------------------------------------------------------------------------------------------------|-------|-------|-------|-------|-------|-------|-------|-------|-------|-------|-------|-------|-------|-------|
| Monday to Saturday                                                                                                           | NS    | Sch   | SHol  |       |       |       |       |       |       |       | Sch   | SHol  |       |       |
| Sudbury, Bus Station                                                                                                         | 0650  | 0705  | 0720  | 0845  | 0945  | 1045  | 1145  | 1245  | 1345  | 1415  | 1505  | 1550  | 1625  | 1735  |
| Nayland, The Forge                                                                                                           | 0728  | 0739  | 0757  | 0922  | 1022  | 1122  | 1222  | 1322  | 1422  | 1452  | 1548  | 1627  | 1717  | 1812  |
| Nayland, Doctors Surgery                                                                                                     | 0731  | 0742  | 0759  | 0924  | 1024  | 1124  | 1224  | 1324  | 1424  | 1459  | 1549  | 1629  | 1719  | 1814  |
| Colchester General Hospital                                                                                                  | 0744  | ..... | 0814  | 0939  | 1039  | 1139  | 1239  | 1339  | 1439  | 1514  | 1604  | 1644  | 1734  | 1829  |
| Colchester Stanwell St                                                                                                       | 0755  | 0815  | 0825  | 0950  | 1050  | 1150  | 1250  | 1350  | 1450  | 1525  | 1616  | 1655  | 1744  | 1840  |
| Norman Way Schools                                                                                                           | ..... | 0825  | ..... | ..... | ..... | ..... | ..... | ..... | ..... | ..... | ..... | ..... | ..... | ..... |
| Monday to Saturday                                                                                                           | Sch   | NS    | Sch   |       |       |       |       |       |       |       | SHol  | Sch   |       |       |
| Norman Way Schools                                                                                                           | ..... | ..... | ..... | ..... | ..... | ..... | ..... | ..... | ..... | ..... | ..... | ..... | 1545  | ..... |
| Colchester Stanwell St                                                                                                       | 0735  | 0755  | 0755  | 0855  | 0955  | 1055  | 1155  | 1255  | 1355  | ..... | 1510  | 1510  | 1610  | 1735  |
| Colchester Head Street                                                                                                       | 0738  | 0758  | 0758  | 0858  | 0958  | 1058  | 1158  | 1258  | 1358  | ..... | 1513  | 1513  | 1613  | 1738  |
| St Helena School                                                                                                             | ..... | ..... | ..... | ..... | ..... | ..... | ..... | ..... | ..... | ..... | ..... | 1520  | ..... | ..... |
| Colchester General Hospital                                                                                                  | 0748  | ..... | 0808  | 0908  | 1008  | 1108  | 1208  | 1308  | 1408  | ..... | 1523  | 1533  | 1623  | 1748  |
| Nayland, Doctors Surgery                                                                                                     | 0801  | 0819  | ..... | 0921  | 1021  | 1121  | 1221  | 1321  | 1421  | ..... | 1536  | 1546  | 1636  | 1801  |
| Nayland, The Forge                                                                                                           | 0802  | 0820  | ..... | 0922  | 1022  | 1122  | 1222  | 1322  | 1422  | ..... | 1537  | 1547  | 1637  | 1802  |
| Thomas Gainsborough School                                                                                                   | 0840  | ..... | 0840  | ..... | ..... | ..... | ..... | ..... | ..... | ..... | ..... | ..... | ..... | ..... |
| Sudbury, Bus Station                                                                                                         | 0845  | 0855  | 0845  | 1000  | 1100  | 1200  | 1300  | 1400  | 1500  | ..... | 1615  | 1625  | 1715  | 1840  |

**For more information: Chambers Coaches Tel: 01787 – 375360 [www.chamberscoaches.co.uk](http://www.chamberscoaches.co.uk)**



Mobile Library  
Post Office  
Doctors Surgery

Parkers Way  
Primary School  
Home School Association  
Nayland Playgroup  
Woodland Corner  
Primary School Choir  
Nayland Toddler Group  
Village Hall  
Church Hall  
Royal British Legion  
Royal British Legion (Women's Sec.)  
Womens Institute  
Over 60's Club  
Bowls Club  
Nayland Art Club  
Horticultural Society  
Conservation Society  
1st Scouts & Cubs  
1st Nayland Guides & Brownies  
Nayland Youth Club  
Village Players  
Nayland Choir  
Transition Nayland  
First Response  
Friends of St. James Church  
Friends of St. Mary's Church  
Chambers Buses  
Local Police  
Police SNT  
Babergh District Council  
District Councillor  
Suffolk County Councillor

Saturdays fortnightly alternating between: High Street & Parkers Way. See page 33 for details  
High Street Tel: 262210 Early Closing on Wednesday  
93 Bear Street Tel: 262202 (out of hours emergency 01206-578070)  
Surgery hours: Mon-Fri 8am-6pm (telephone service until 6.30) www.northhillsurgery.co.uk  
Scheme Manager: Ellen Salmon, 15 Samford Close, Holbrook Tel 01473 328458  
Head Teacher: Raegan Delaney Tel: 262348  
Sec: Ronnie Egan 01787 210046 rontone01@sky.com, Chair: Lindsey Regan 264019  
Manager: Sue Clarke 263054 http://woodlandcornernayland.blogspot.com  
Administrator: Caroline Keep 263054 e-mail: enquiries\_wc1@btconnect.com  
Jayne Kennedy 263207  
Michelle Plumb 264116 Alice Palmer 263629 - Fridays 9.30-11.30am Village Hall  
Bookings: Sara Strover 07748 953175 Caretaker: Mrs Y. Spooner 262691  
Bookings: Anna Boon 262780. stjameschurchhall@yahoo.com  
Hon Sec. Andrew Gowen 262534  
Sec: Kathy Hunt 262014 - 2nd Wednesday each month 3pm Parkers Way Common Room  
Sec: Lorna Rumsey 01787 211975 - 3rd Monday each month 7.30pm Village Hall  
Sec: Barbara Smith 501942 President: Mrs Eva Rolfe 263151 - 2nd Thursday each month  
Sec: Mrs Eva Rolfe 263151  
Daphne Berry 262641 Liz Thorne 262664 - Wednesdays 2-4pm (term times)  
Sec: Lorraine Brooks 262807 Chair: Trevor Smy 262022 www.naylandhortsoc.org.uk  
Hon Sec Andora Carver 262970 Chair: John Alexander 262676 www.naylandconservation.org.uk  
Mr M Macbeth 01473 827239 - Thursdays 7pm  
Julie Mansfield 01787 211554 Tuesdays 5.30-7pm  
Leader: Emma Elkin 07887 296409 naylandyouthclub@hotmail.co.uk Tuesdays 7-9pm  
Chair: Gale Scott 262061 Membership Sec: Emma Wallis 271366  
Sec: Cathy Allen cathyallen@talktalk.net Chair: Ian McKay 242223 dougiemckay@btopenworld.com  
Will Hitchcock 263169 - info@transitionnayland.co.uk - www.transitionnayland.co.uk  
Karen Elliott 263233 kazelli@btinternet.com  
Chair: Alan Edwards 262800  
Sec: Tibby Mimpriss 263450 emimpriss@btinternet.com Ch: Bill Starling 262397 billstarling@hotmail.com  
Tel: 01787 227233 www.chamberscoaches.co.uk  
PCSO 3108 Mandy Coleman & PC 1455 Matt Paisley Tel: 101 (non-emergency) number  
Babergh East SNT email: babergh-east.snt@suffolk.pnn.police.uk  
Tel: 01473 822801 (Main Switchboard) Corks Lane, Hadleigh, IP7 6SJ www.babergh.gov.uk  
Richard Cave richardcave@talktalk.net 262146  
James Finch James.Finch@suffolk.gov.uk 263649 Rose Cottage, 5 Fen Street CO6 4HT

| PARISH COUNCIL                                                                                                                                                                                                                                                                                                                                                                                                                                                                                                                                                                 | COMMUNITY COUNCIL                                                                                                                                                                                                                                                                                                                                                                                                                                                                                                                                   | VILLAGE HALL COMMITTEE                                                                                                                                                                                                                                                                                                                                                                                 |
|--------------------------------------------------------------------------------------------------------------------------------------------------------------------------------------------------------------------------------------------------------------------------------------------------------------------------------------------------------------------------------------------------------------------------------------------------------------------------------------------------------------------------------------------------------------------------------|-----------------------------------------------------------------------------------------------------------------------------------------------------------------------------------------------------------------------------------------------------------------------------------------------------------------------------------------------------------------------------------------------------------------------------------------------------------------------------------------------------------------------------------------------------|--------------------------------------------------------------------------------------------------------------------------------------------------------------------------------------------------------------------------------------------------------------------------------------------------------------------------------------------------------------------------------------------------------|
| <p><b>Clerk:</b> Debbie Hattrell 01787 880935<br/>pc@naylandwithwissington.suffolk.gov.uk<br/>Charis, Upsher Green, Gt Waldingfield, CO10 0TT</p> <p><b>Chairman</b> Mary George<br/><b>Vice Chairman</b> Matthew Pescott Frost<br/><b>Councillors:</b> Patricia Fuller, Rosemary Knox, Gerald Battye, Tom Gardiner, Will Hitchcock, Graham Walker</p> <p><b>Parish Recorder</b> Wendy Sparrow<br/><b>Tree Warden</b> Terry Bannister<br/><b>Footpath Warden</b> Sally Bartrum</p> <p><i>Meetings: 7.30pm second Wednesday of month in the Village Hall Committee Room</i></p> | <p><b>Chairman</b> Neil Barbrook 263045<br/><b>Secretary</b> Lorraine Brooks<br/><b>Treasurer</b> Bryan Smith<br/><b>President</b> Ken Willingale<br/><b>Vice-President</b> Bryan Smith<br/><b>Vice-Chairman</b> Colin Ramsell</p> <p><b>Executive:</b> Tricia Hall, Jenny Smith, Iain Wright, Julie Wooding, Karen Elliott<br/><b>Individual:</b> Claire Buller, Vicki Sargent, John Parsonson</p> <p><i>Meetings: 8pm (Exec 7.30) Church Hall on 7 May, 2 July, 3 September, 29 October, 12 January 2015, 4 March 2015 AGM (Village Hall)</i></p> | <p><b>Chairman</b> Iain Wright 263657<br/><b>Secretary</b> Chris Thompson<br/><b>Treasurer</b> Peter Mann<br/><b>Vice Chairman</b> Mike Hunter<br/><b>Bookings Sec.</b> Sara Strover</p> <p><b>Committee:</b> Rosemary Knox, Nick Moriarty, Maria Mason</p> <p><i>Meetings: 7.30pm first Monday every month (except Bank Holidays: second Monday)<br/>The AGM will be on 5 March 2014</i></p>          |
| CHURCH                                                                                                                                                                                                                                                                                                                                                                                                                                                                                                                                                                         | Organists: St James: James Finch, St Mary's: Catherine Johns<br>St James Choir: James Finch 262993<br>Church Wardens<br>St James: James Carver 262970 carversnayland@talktalk.net or Kathy Hunt 262014<br>St Mary's: Nicola Thorogood 262453 nicola_thorogood@hotmail.com or Gerald Knox 262224<br>Deanery Synod Reps<br>St James: Alex Murrison 262369, James Carver 262970<br>St Mary's: Rosemary Knox 262224, John Branfield 845107                                                                                                              | Parochial Church Council<br>St James<br>Lay Chairman: John Baker<br>Treasurer: James Carver 262970<br>Secretary: James Finch 262993<br>Rose Cott, 5 Fen Street CO6 4HT james@jfassocs.co.uk,<br>Committee: Chris Hunt<br>St Mary's<br>Treasurer: Gerald Knox 262224<br>Secretary: John Branfield 845107<br>Committee: Rosemary Knox, Suki Cohen, Tom Gibbons, Fiona Storey, George Storey, Derek Johns |

COMMUNITY WEBSITE - [www.naylandandwiston.net](http://www.naylandandwiston.net)

Webmaster: Graham W Griffiths – Tel: 262132 - e-mail: webmaster@naylandandwiston.net

## VILLAGE DIARY

|                        |                                                                                                                                                                                                                                                                                                                                                                                                                                                                                |
|------------------------|--------------------------------------------------------------------------------------------------------------------------------------------------------------------------------------------------------------------------------------------------------------------------------------------------------------------------------------------------------------------------------------------------------------------------------------------------------------------------------|
| <b>May</b>             |                                                                                                                                                                                                                                                                                                                                                                                                                                                                                |
| 26th                   | Nayland Traditional Church Fete: 2pm-4pm Webb's Meadow                                                                                                                                                                                                                                                                                                                                                                                                                         |
| 29th                   | Luncheon Club for over 60s: Church Hall                                                                                                                                                                                                                                                                                                                                                                                                                                        |
| 30th                   | Village Cinema: 'Gravity' 8pm doors open 7.30pm Village Hall <i>page 22</i>                                                                                                                                                                                                                                                                                                                                                                                                    |
| <b>June</b>            |                                                                                                                                                                                                                                                                                                                                                                                                                                                                                |
| 2nd                    | Village Hall Management Committee Meeting 7.30pm Village Hall <i>page 43</i>                                                                                                                                                                                                                                                                                                                                                                                                   |
| 8th                    | Conservation Society: Open Gardens 2pm-6pm <i>page 13 &amp; 24</i>                                                                                                                                                                                                                                                                                                                                                                                                             |
| 10th                   | Over 60s: meeting 2.30pm Parkers Way community centre <i>page 25</i>                                                                                                                                                                                                                                                                                                                                                                                                           |
| 11th                   | HortSoc: Outing to Kew Gardens, leaving Nayland 8.45am <i>page 23</i>                                                                                                                                                                                                                                                                                                                                                                                                          |
| 11th                   | Parish Council Meeting 7.30pm Village Hall Committee Room <i>page 43</i>                                                                                                                                                                                                                                                                                                                                                                                                       |
| 12th                   | Over 60s Club: meeting                                                                                                                                                                                                                                                                                                                                                                                                                                                         |
| 14th                   | Farmers' Market : 10am-1.30pm Village Hall <i>page 41</i>                                                                                                                                                                                                                                                                                                                                                                                                                      |
| 16th                   | Women's Institute: <i>Walk Around Nayland &amp; Quiz</i> with Wendy Sparrow <i>page 24</i>                                                                                                                                                                                                                                                                                                                                                                                     |
| 18th                   | Art Group: outing to Woodbridge                                                                                                                                                                                                                                                                                                                                                                                                                                                |
| 18th                   | Memory Lane Tea Dance 2pm-4pm Village Hall <i>page 20</i>                                                                                                                                                                                                                                                                                                                                                                                                                      |
| 20th                   | Village Cinema: <i>"The Invisible Woman"</i> 8pm doors open 7.30pm Village Hall <i>page 12 &amp; 22</i>                                                                                                                                                                                                                                                                                                                                                                        |
| 21st                   | Primary School: Summer Fete 11am-1pm <i>page 11 &amp; 27</i>                                                                                                                                                                                                                                                                                                                                                                                                                   |
| 22nd                   | Country Music Club: <i>'Best of Friends'</i> 7.30pm Village Hall <i>page 20</i>                                                                                                                                                                                                                                                                                                                                                                                                |
| 26th                   | Luncheon Club for over 60s: Church Hall <i>page 26 &amp; 29</i>                                                                                                                                                                                                                                                                                                                                                                                                                |
| 27th                   | Conservation Society: 40th Anniversary Celebration 7.30pm Village Hall <i>page 12 &amp; 24</i>                                                                                                                                                                                                                                                                                                                                                                                 |
| 28th                   | Nayland Choir: Concert & Barbecue 6pm Village Hall <i>page 12 &amp; 25</i>                                                                                                                                                                                                                                                                                                                                                                                                     |
| <b>July</b>            |                                                                                                                                                                                                                                                                                                                                                                                                                                                                                |
| 2nd                    | Community Council Meeting 8pm Church Hall ( <i>Exec 7.30</i> ) <i>page 6 &amp; 38</i>                                                                                                                                                                                                                                                                                                                                                                                          |
| 7th                    | Village Hall Management Committee Meeting 7.30pm Village Hall <i>page 43</i>                                                                                                                                                                                                                                                                                                                                                                                                   |
| 8th                    | Over 60s: meeting 2.30pm Parkers Way community centre <i>page 25</i>                                                                                                                                                                                                                                                                                                                                                                                                           |
| 9th                    | Parish Council Meeting 7.30pm Village Hall Committee Room <i>page 43</i>                                                                                                                                                                                                                                                                                                                                                                                                       |
| 10th                   | Over 60s Club: meeting                                                                                                                                                                                                                                                                                                                                                                                                                                                         |
| 11th                   | HortSoc: Garden Party for members <i>page 13 &amp; 23</i>                                                                                                                                                                                                                                                                                                                                                                                                                      |
| 12th                   | HortSoc: Scarecrow Competition <i>page 10 &amp; 23</i>                                                                                                                                                                                                                                                                                                                                                                                                                         |
| 12th                   | Farmers' Market : 10am-1.30pm Village Hall <i>page 8</i>                                                                                                                                                                                                                                                                                                                                                                                                                       |
| 13th                   | Village Players: Auditions <i>'Jack and the Beanstalk'</i> 5pm Church Hall <i>page 22</i>                                                                                                                                                                                                                                                                                                                                                                                      |
| 15th                   | Luncheon Club for over 60s: Summer Tea Party Longwood Barn <i>page 26 &amp; 29</i>                                                                                                                                                                                                                                                                                                                                                                                             |
| 16th                   | Village Players: Auditions <i>'Jack and the Beanstalk'</i> 5pm Church Hall <i>page 22</i>                                                                                                                                                                                                                                                                                                                                                                                      |
| 21st                   | Women's Institute: <i>Let's Talk Gem Stones</i> Rowley Collier <i>page 24</i>                                                                                                                                                                                                                                                                                                                                                                                                  |
| 23rd                   | RBL: meeting at the Anchor Inn 7.30pm <i>page 22</i>                                                                                                                                                                                                                                                                                                                                                                                                                           |
| 25th                   | Art Group: Tea at Newton Green                                                                                                                                                                                                                                                                                                                                                                                                                                                 |
| 26th                   | HortSoc: Hanging Basket Competition <i>page 12 &amp; 23</i>                                                                                                                                                                                                                                                                                                                                                                                                                    |
| 27th                   | Country Music Club: <i>'Brian's Country'</i> 7.30pm Village Hall <i>page 20</i>                                                                                                                                                                                                                                                                                                                                                                                                |
| <b>August</b>          |                                                                                                                                                                                                                                                                                                                                                                                                                                                                                |
| 2nd                    | Nayland Flower Show 2pm-5pm Village Hall <i>page 11, 19 &amp; 23</i>                                                                                                                                                                                                                                                                                                                                                                                                           |
| 4th                    | RBL: Commemorating WW1 7pm at War Memorial <i>page 22</i>                                                                                                                                                                                                                                                                                                                                                                                                                      |
| 25th                   | Community Council: Picnic in the Park 1pm-5pm Webb's Meadow <i>page 7</i>                                                                                                                                                                                                                                                                                                                                                                                                      |
| <b>Forward Planner</b> | 8th September Hortsoc; outing to Peter Beale's Roses & Bressingham Steam & Gardens <i>page 18 &amp; 23</i><br>22nd October RBL outing to Cold War Museum near Woodbridge ( <i>provisional date</i> ) <i>page 22</i><br>18 October Race Night in aid of Shelly Centre for Therapeutic Riding<br>29th October Village Lunch: 'Catering the Royal Way' Dr Patrick Thompson <i>page 25</i><br>Early December Village Players' Panto <i>'Jack and the Beanstalk'</i> <i>page 22</i> |

Thank you for your contributions – if you have any ideas or suggestions please contact the Editor

**DEADLINE FOR RECEIPT OF COPY IN THE AUGUST ISSUE IS 5PM ON: 20TH JULY**

| CONTACT                                                                                                                                                                                                                                                                                                                                                           |  | ADVERTISING COSTS                                             |                    |        |
|-------------------------------------------------------------------------------------------------------------------------------------------------------------------------------------------------------------------------------------------------------------------------------------------------------------------------------------------------------------------|--|---------------------------------------------------------------|--------------------|--------|
| The Editor: Lorraine Brooks Tel: 262807<br>E-mail: <a href="mailto:naylandcc@yahoo.co.uk">naylandcc@yahoo.co.uk</a><br><br>Copy can be posted in the Community Times Box in Nayland Post Office<br><br>To ensure contributions can be accommodated in the space available it is advisable that space for promotion or large articles is reserved with the editor. |  | Six issues for the Price of Five – get one advert <b>FREE</b> |                    |        |
|                                                                                                                                                                                                                                                                                                                                                                   |  | Size                                                          | Dimensions         | Cost   |
|                                                                                                                                                                                                                                                                                                                                                                   |  | 1/16 page portrait                                            | 6.3cm H x 4.4cm W  | £5     |
|                                                                                                                                                                                                                                                                                                                                                                   |  | 1/8 page landscape                                            | 6.3cm H x 9cm W    | £10    |
|                                                                                                                                                                                                                                                                                                                                                                   |  | 1/4 page portrait                                             | 13cm H x 9cm W     | £17.50 |
|                                                                                                                                                                                                                                                                                                                                                                   |  | 1/4 page landscape                                            | 6.2cm H x 18.4cm W | £17.50 |

All monies raised from the Community Times go to good causes within the community. The Editor and Community Council may not be held responsible for the accuracy of articles or any other claims made by any advertiser in the Community Times.

The Editor and Community Council reserves the right to alter, shorten or refuse any items submitted for publication.

The Community Times is produced and distributed by the **Nayland-with-Wissington Community Council**

Registered Charity No.304926

The Community Times can also be viewed / downloaded from the Nayland Community Website: [www.naylandandwiston.net](http://www.naylandandwiston.net)