



# NAYLAND<sup>WITH</sup>WISSINGTON COMMUNITY TIMES

YOUR LOCAL MAGAZINE FOR NEWS AND VIEWS

## Celebrating a Decade of Our Community Website

[www.naylandandwiscon.net](http://www.naylandandwiscon.net)

**"HAPPY BIRTHDAY TO YOU,** Yes, the Nayland and Wiston website is 10 years old.

We must start with a very big Thank You to Graham Griffiths for all of his hard work getting it set up 10 years ago, and his continued support in keeping it updated and looking better now than I think we could ever have expected. The addition of access to the Community Times to the site allows so much information to be shared to all on the World Wide Web.

The Community Council would like to thank Graham and all of the other contributors to the site for all their hard work, and let's keep going for another 10 years."

**Alex Badman, Chairman, Nayland with Wissington Community Council**

"The website now forms a crucial source of information and focus for the village. It is a time consuming task and all the village organisations are grateful for the work put into the website. The site was recognised and praised by Jonathan Free, Babergh's Head of Communities, in his talk to our Annual Parish Assembly in April. On it we can all see the colour version of our superb Community Times. All our thanks go to Graham for sticking with this project."

**Gerry Battye, Chairman, Nayland with Wissington Parish Council**

A special Nayland and Wiston Website Quiz to celebrate this milestone and more congratulations can be found on page 7

## SEE IT, SNAP IT, SEND IT...

We are introducing this new feature in the Community Times. Keep your cameras handy and record what you see happening in Nayland with Wissington. If you would like your photo to be considered to feature in future issues please send it to [lorraine.nayland@btinternet.com](mailto:lorraine.nayland@btinternet.com).

## VILLAGE CALENDAR COMPETITION



The photographic competition and exhibition held on 6th May was once again very successful and thirteen splendid photographs were selected to be included in the 2014 calendar which will be on sale from 3rd August at the Flower Show. *More details and a selection of images are shown on pages 30 & 31.*

Thank you to all who entered. It was a truly delightful display and so enjoyed by all who came.

**The Calendar Team, Nayland with Wissington Community Council**

**JUNE 2013**

**No: 143**

### SPECIAL INTEREST

Nayland Open Gardens

Nayland Flower Show

Scarecrow Competition

HortSoc Film

'Digging For Victory'

Village Cinema 'Argo'  
& 'Quartet'

Conservation Society  
'Farming in the Stour Valley'

Village Players' Auditions

Concert: Tinuke & Paul

Youth Club Snail Race Night

### THIS ISSUE

Parish Assembly

Test Pit Dig – The Results

Village Players 'Hay Fever'

Over 60s Luncheon Club

Country Music Club

### REGULARS

Community Council Notes

Parish Council Report

Society News

Church Services

Garden Notes

Village History

### PLUS

Dates for your Diary

Local Information

Contact Details

(on back pages)

View the CT in colour on the **COMMUNITY WEBSITE: [www.naylandandwiston.net](http://www.naylandandwiston.net)**

# NAYLAND WITH WISSINGTON PARISH COUNCIL

Meeting: 11th April 2013

## POLICE REPORT

PCSO Mandy Coleman stated there had been five incidents reported in the last month; two thefts of fence panels in Wiston Road, theft of heating oil in High Street, daytime burglary in Bear Street where the intruder was interrupted by the homeowner and fled with some cash, and theft of a catalytic converter from a motor vehicle in Wiston Road.

In the Babergh area the main crimes occurring are daytime dwelling burglaries, outbuilding burglaries, catalytic converter and heating oil thefts. There have been reports of 'builders' knocking on doors apologising for the noise they are causing at neighbouring properties where a dwelling burglary has occurred, these may be innocent but may be worth reporting.

## DISTRICT COUNCILLOR'S REPORT

Richard Cave reported that the Babergh and Mid Suffolk have combined resources on community engagement and have produced a leaflet.

## COUNTY COUNCILLOR'S REPORT

James Finch advised there had been some mis-representation of facts regarding the sale of Stoke by Nayland School. The Larchcroft Education Trust has made an offer which has been provisionally agreed subject to a number of conditions. A request has also been received for an option to purchase part of the site by the Lady Ann Windsor Trust for Alms Houses which is being considered.

He reported there would no increase in the county's share of council tax, SCC's preferred bidder for the highways services contract is now MGWSP (a collaboration between May Gurney Ltd and WSP UK Ltd).

All comments regarding dangerous potholes should be reported in the normal manner. They will be prioritised based on their severity and risk to safety of motorists.

## ALLOTMENTS

Councillors discussed an enquiry regarding keeping chickens at the allotments and some concerns were raised, particularly that of attracting vermin. It was noted that an informal enquiry regarding keeping bees had been raised previously. It was felt this matter should be discussed at a meeting with allotment holders to be arranged in the near future.

Councillors were asked to give thought to a solution for reducing the rabbit population.

The water to the extension pipes will be turned on this week.

A grant application for permanent grassland has been submitted to Natural England.

It was agreed to get quotes to erect a post and rail fence and wide pedestrian access gate to prevent vehicles entering the meadow.

## STREET LIGHTING

Debbie Hattrell said there had been no news from SCC regarding financing a five year plan for upgrading all the PC's lights. James Finch said interest rates for the project had come back higher than expected so they are looking for the best alternative option.

A new unit had been installed at the end of Bear Street but some adjustment is required.

James Finch suggested the light on Newlands Lane was ineffective. Councillors would review this later in the upgrade plan.

## JOHN KENT MEMORIAL BENCH

Tricia Fuller is liaising with the owner of Bear House and the Kent family to identify a suitable position for the bench to be fixed. SCC Highways will be contacted for official approval.

## PLANNING

Reviewing recent planning applications Gerry Battye said permission had been granted at Clare Cottage, 6 Bear Street for the demolition and reconstruction of ridge stack and internal and external alterations.

Councillors had no objections to the trimming of two silver birch trees at 20 Fen Street but they felt the Arboricultural Officer should inspect the Yew tree which has a TPO. They had no

objections to the erection of a shed and listed building consent and external and internal alterations of outbuilding to facilitate use as additional living accommodation at 18 Birch Street subject to approval of the Conservation Officer.

Councillors agreed not to object to an application at Harpers Hill Farm for erection of a new Class B8 commercial storage building (two units) for local business use but would raise concerns regarding the intensification of buildings on the site within an AONB.

It was agreed to object to an application at 19 Stoke Road for demolition of boundary wall to allow erection of detached outbuilding, off street parking bay and new vehicular access on the grounds that demolition of the Victorian wall and replacement with a willow fence would be inappropriate in this setting and detrimental to the existing streetscape. SCC Highways should be consulted and the conservation officer should be involved as the property is on the local list, in a Conservation Area and AONB.

Colchester Borough Council have advised they are undertaking a focused review of its planning policies which is intended to ensure that policies are up-to-date, appropriate, and comply with the National Planning Policy Framework (NPPF). The consultation period on the Focused Review will run until 5pm on 29 April 2013.

Councillors will look at the application for a Tesco stores at Hadleigh on the Babergh and Suffolk Preservation Society websites to consider what local impact it may have.

## RECREATION AND OPEN SPACES

Debbie Hattrell said Rachel Hitchcock will be leading the initial meeting for the project for new play equipment for the village using 106 Recreation grants. This sub-committee of the PC will include Rosemary Knox, Mark Burbidge and other volunteers. It was felt the new equipment should be placed within the constraints of the fenced off area of Fairfield Recreation Field.

## FOOTPATHS

Sally Bartrum's report on footpaths has reminded SCC of two stiles which are rotten on footpath 4, to the rear of the scout hut, which was reported a year ago, a fallen footpath post on path 16 at the northern junction with Campion Hill and a fallen finger post on footpath 7 on the road to Wormingford. No response had been received from SCC following her offer to put up way-marking signs. James Finch agreed to pursue these issues.

## PARISH ASSEMBLY

The Parish Assembly will be held on Monday 22<sup>nd</sup> April at 8pm and Jonathan Free, Head of Communities at Babergh has agreed to speak on *'What do we want as a community and how do we achieve this?'* followed by questions including questions to parish, district and county councillors. There will be no reports but district and county councillors will have printed handouts available.

Gerry Battye agreed to put a few promotional posters on the main notice boards.

## IN BRIEF:

Following recommendation from contractors it was agreed to mount the Jane Walker memorial plaque in the burial ground on a wooden plinth instead of a brick plinth as previously agreed.

Provision of an additional grit bin at the top of Heycroft Way would be progressed at the September meeting.

It was noted **Suffolk ACRE** has been merged with other groups and will be known as Community Action Suffolk.

## NAYLAND FUNDRAISER

A coffee morning held by the Nayland Fundraising Committee at the church hall raised £500 for the Shelley Centre for Therapeutic Riding (Riding for the Disabled). Chairman Jane Lane expressed her thanks to everyone who supported the event or gave donations.

# NAYLAND WITH WISSINGTON PARISH COUNCIL

## Annual Meeting: 8th May 2013

### ELECTIONS

Gerry Battye was re-elected chairman and Mary George elected as vice-chairman.

### POLICE REPORT

PCSO Mandy Coleman's report stated there had been eight incidents reported in the last month; daytime dwelling burglary in Bures Road, theft from a dwelling in Harpers Estate, two thefts of fence panels in Wiston Road, theft of heating oil in Larch Grove, theft of vehicle number plates in Parkers Way, drink-drive incident on Harpers Hill, common assault in Wiston Road.

### DISTRICT COUNCILLOR'S REPORT

Richard Cave reported that the Babergh and Mid Suffolk continue working on the constitution. The strategy committees, consisting nine members for each district, would delegate lead members.

### ALLOTMENTS

A meeting with allotment holders would be scheduled. Items for discussion would include an enquiry on keeping chickens at the allotments. Judging for the best kept allotment competition would be arranged.

Quotes were being obtained to erect a post and rail fence and wide pedestrian access gate to prevent vehicles entering the meadow. It was noted the path has been used by a mobility buggy.

The stewardship grant application to Natural England for permanent grassland has been successful.

### STREET LIGHTING

Debbie Hattrell said SCC had confirmed loan terms for the five year plan for upgrading the PC's lights had not been acceptable so they are looking for the best alternative option. The supplier had agreed to hold the price of equipment for 5 years which will provide a saving.

The next phase of the project, for further along Bear Street, can go ahead.

A new unit installed at the end of Bear Street has teething problems.

### JOHN KENT MEMORIAL BENCH

SCC Highways have given approval for the bench to be sited opposite 30 Bear Street and are organising the license. Installation should take place in mid June.

### PLANNING

Reviewing recent planning applications Gerry Battye said listed building consent had been granted at 18 Birch Street

for erection of shed and conversion of outbuilding to additional living accommodation and permission given at 20 Fen Street to shape and trim two silver birch trees and reduce the width of a yew tree with a TPO.

Councillors had no objections an application for a first floor extension at Sargent's Farm, Wiston.

Matthew Pescott Frost, Tom Gardiner and Tricia Fuller agreed to draft objections to the Planning Inspectorate for the Appeal in relation to Horkesley Park.

### RECREATION AND OPEN SPACES

Rachel Hitchcock will co-ordinate the project for new play equipment for of Fairfield Recreation Field. Neil Barbrook has come forward as a volunteer. The first step will be researching for available grants.

The gate post to the recreation field was reported broken but the spring closing gate is still working. Before discussing options for repair or replacement councillors will visit the site.

### FOOTPATHS

SCC have responded to reports of maintenance to footpaths; a fallen finger post on footpath 7 on the road to Wormingford is on the works list and they will investigate a fallen footpath post on path 16 at the northern junction with Campion Hill. The clerk will provide details of the landowners where two stiles are rotten on footpath 4, to the rear of the scout hut.

They are happy for the footpath warden to put up way-marking signs and will provide more on request.

They advised the first annual footpath cut will commence 8th May and be completed within 6 weeks, a second cut will take place in August.

### HIGHWAYS

Pot holes in Wiston and Mill Street have been reported to Highways.

Concern was raised that trees and shrubs were overhanging pavements and obstructing pedestrians in some locations. A note would be included in the Community Times reminding property owners to keep growth trimmed.

Concern was raised that in some areas kerbs had weeds and moss growing. It was noted that the Parish Council is responsible for litter picking, Babergh performs quarterly road sweeping on behalf of SCC Highways. Mary George will identify the problem areas for Debbie to forward to Babergh.

### BURIAL GROUND

Pollarding of the Lime trees will take place in May.

It was agreed that the 2014 tree inspection would include St Mary's churchyard although it is not Parish council land and any work needed would not be the council's responsibility.

### PARISH ACCOUNTS

Debbie Hattrell reported on the council's end of year accounts which had a closing balance of £38,694.50p which included £9,000 of earmarked reserves. The end of year accounts and submission for audit were approved.

### ITEMS RAISED AT THE PARISH ASSEMBLY

Councillors felt the speaker had been controversial but had achieved getting people talking and asking questions.

It was felt the possibility of developing a neighbourhood plan and registering community amenities on the asset register needs researching. It was agreed to invite Jonathan Free back to an open meeting to further discuss these issues. Mary George agreed to look into the possibility of developing an asset register.

Discussing the A134 junction with Bear Street and Wiston Road councillors felt the right of way priority was confusing. At present statistics only included accidents reported by the police where injury occurred. Councillors felt it would be helpful to build up statistics of all incidents. A safety review of the junction would be requested and the rationale of the current right of way design would be queried.

### Nayland Over 60s

## LUNCHEON CLUB

A Monthly Lunch for Senior Citizens  
Church Hall ~ 12.00 noon for 12.30 pm ~ £3

30 May  
13 June

11 July: Summer Tea Party, Longwood Barn  
(August : No Meeting)

Come along and join the friendly atmosphere for a chat with friends, old and new.

If you would like to join us for lunch just come along.  
If transport down to the Church Hall is difficult telephone Olga Alexander on 263923 to see if we can collect you.



## Office Matters

### Comprehensive WORDPROCESSING Service

(Inhouse cover also provided)

Please contact

**Margarette**

on

**01473 822860** or

**07863 560945**

to discuss your particular  
requirement

[margarette@officematters.org](mailto:margarette@officematters.org)

**Professional and Confidential**

## INDOOR TENNIS COURT

at Newtons Farm,  
Wissington, Nr Nayland

"PAY AND PLAY"

NO MEMBERSHIP FEE

PARKING & TOILET FACILITIES

Further

details:

**01206**

**262453**

[www.indoortenniscourt.co.uk](http://www.indoortenniscourt.co.uk)



## BED & BREAKFAST

1 Blacksmiths Cottages, Wiston



Small friendly B&B offering one twin-bedded  
room with private facilities &  
separate entrance, two miles from Nayland,  
overlooking the peaceful Stour Valley.  
£30 per person per night.

Telephone: Anne Townshend

**01206 262927**

## TOWN PRINTS

### General Picture Framing

Also a selection of  
antique engravings  
of Colchester and District.

Foster Jones  
Longwood Cottage,  
Fen Street, Nayland,  
CO6 4HT

**Tel: 01206 262483**

## DS Clarke Building Services

For professional - high quality work

General building work including:-

Extensions - Renovations - Brickwork  
Landscaping - Roofing - Kitchens - Tiling  
Plastering - Carpentry - Decorating etc

For a free, no obligation estimate,  
contact David Clarke on:

**Tel: 01787 227943**

**Mb: 07867 851 137**

[dsclarkebuilding@yahoo.co.uk](mailto:dsclarkebuilding@yahoo.co.uk)

7 Claypits Ave, Bures, CO8 5DA

## Lower Dairy Farm Traditionally Reared BEEF

**Hannah & Humphrey Taylor**

**Lower Dairy Farm,**

**Water Lane,**

**Little Horkesley**

Please call in

or phone **01206 262314**

or **07810 330089**

[www.lowerdairyfarm.co.uk](http://www.lowerdairyfarm.co.uk)

## Private Tutor

**Primary** - Maths,  
English, Reasoning,  
11+ entrance preparation

Friendly approach!

CRB checked.

Contact **Emily Fletcher**

(BA Hons, PGCE) to

discuss your child's  
needs: 07970 678404 /  
[emthomas77@hotmail.com](mailto:emthomas77@hotmail.com)

## Stour Valley Landscapes

*Gardening*

*Fencing*

*Landscaping*

*Tree & Hedge work*

*Handyman jobs*

*For a local, friendly &  
reliable service:*

**Tel: 01206 263629**

**Mob: 07801 430751**

## TRG PEST CONTROL

Rabbits, Moles, Rats,  
Mice, Wasps, etc  
Efficient and  
Economical Service

For Further  
information call

**Terry Gowing**

**Tel: 01206 322776**

**Mobile: 07990 954192**

Colchester's Premier Roofing Specialist

Established  
over 20  
years

## EXTERIOR CARE

FLAT ROOFING - TILING & SLATING  
New Roofs & Repairs - Chimney Work  
- Leadwork

An Established Local Family Business  
QUALITY WORKMANSHIP GUARANTEED  
FREE ESTIMATES & ADVICE

For Quality, Reliability & Service Please Call

**01206 272453**

**MOBILE 07970 016234**

5 Brook Cottages, Boxted, Colchester CO4 5TW

## Fix-A-Lock

24 HOUR LOCKSMITH -  
Wooden and UPVC doors

ALL WINDOW/DOOR REPAIRS -  
handles, hinges, mechanisms, etc

REPLACEMENT SEALED UNITS

UPVC DOOR &

WINDOW SPECIALIST

BURGULARY REPAIRS

CRB CHECKED



**Ted Blanchette**

**M: 07836 551 032**

[E:tedblanchette@tiscali.co.uk](mailto:E:tedblanchette@tiscali.co.uk)

Learn to drive  
with your local driving school



**Rob Austin D.O.T A.D.I.**

Fully qualified

12 years experience

Dual controlled car

Learn at your own pace

1st 2 hour lesson £25

£19 per hour there after

For more information or to book  
lessons call Rob on:

**01206 262106**

or: **07946 085338**

## Country Cars Private Hire

Personal & Professional Service Polstead Based

Local & Long  
Distance

Airports - Theatres  
Weddings - Hospitals



Contact Dave Howard

**01206 262196**

**07767 076976**

## BOBBY WATSON

OFTEC Registered Oil Technician

- Plumbing and Heating
- Boiler replacement, servicing & commissioning
- Oil Tank replacements
- Bathrooms and Wet rooms
- Tiling

**Tel: 01376 326773**

or Mobile: **07905 265567**

# P.S. DAY Flooring Specialist

Over 35 years experience

FREE ESTIMATES  
PLANNING & COLLECTION SERVICE

Tel: 01787 828237  
Mob: 07903 409 052

NAYLAND WITH WISSINGTON COMMUNITY TIMES



Shimmy, Shake,  
Wiggle & Giggle  
to Dance Fitness Fun

www.fundancing.co.uk

janet@fundancing.co.uk

f FunDancing.Suffolk

Fun\_Dancing

So Much More Than a Dance Class  
No partners required, any age and ability are very welcome

## "Strictly" style Dance-a-cise Classes

60 minute class only £5.50

in  
Nayland's Village Hall  
every  
Wednesday morning

Spaces are limited - to reserve yours  
Call Janet on 07506 350 455

Classes also in:  
Brantham, Capel St Mary, East Bergholt,  
Great Waldingfield, Hadleigh & Stratford St Mary

## Nayland Private Hire

Airport & Long Distance  
Six seater executive travel



Satellite navigation  
Air conditioning  
Leather interior  
Traffic master  
Advanced bookings advised

01206 262 049 or 07979 640 040



## STOURVALLEY

HEATING & DOMESTIC SERVICES LTD

- OIL CENTRAL HEATING INSTALLATION & MAINTENANCE
- COMMISSIONING
- HOT WATER STORAGE INSTALLATION
- UNDERFLOOR HEATING INSTALLATION
- WATER SOFTENER INSTALLATION
- FULL BATHROOM DESIGN & INSTALLATION
- DOMESTIC PLUMBING SERVICES

Local experienced established registered installer  
For advice or a free estimate call MARK WARREN  
on Tel 01473 312047 or Mobile 07968 586613



## DAWN DALE

### BEAUTY & RELAXATION THERAPY

THATCHERS COTTAGE • SCOTLAND STREET • STOKE BY NAYLAND

OFFERING: MANICURE INC GELCOLOR BY OPI,  
PEDICURE, WAXING, AROMATHERAPY,  
BODY TREATMENTS, FACIALS, EYE  
TREATMENTS, MASSAGE  
LADIES ONLY

OPEN MON-SAT & UNTIL 9PM TUE & THU

GIFT VOUCHERS AVAILABLE

PLEASE PHONE DAWN:

01206 262 118

dawncdale@gmail.com

## MAKING YOUR WILL

I offer a home visit service for clients wishing to make their wills, lasting powers of attorney or advance decisions (to refuse medical treatment). As a retired solicitor I help my clients make well planned arrangements (including providing witnesses to ensure legal acceptance) at a very competitive price.

Please call 01206 263420

or email me at: [trevordodwell@aol.com](mailto:trevordodwell@aol.com)

[www.thewillbusiness.com](http://www.thewillbusiness.com)

## JOHN TOKELY

### Painter and Decorator

Interior and Exterior Work Undertaken  
Free estimates

No job too large or too small

9 Nayland Road, Colchester CO4 5EG

Telephone: 01206 845665

Mobile: 07976 848310



## SHORT COURSES at ASSINGTON MILL

Beekeeping for beginners  
Birds of Prey, working with  
Hen keeping in your garden  
Historic timber-framed buildings  
Chain-sawing for amateurs  
Clay ovens - how to make one  
Bricklaying for amateurs  
Plumbing basics for amateurs  
Photography: nature & landscape  
Decorative rope-work  
Ballroom dancing for novices  
Family history research

Cooking for Health  
Food for free  
Natural Skin Care  
Fruit tree pruning  
Coracle making  
Celtic drawing  
Stained glass  
Silver clay jewellery  
Sheep for Smallholders  
Pig-keeping  
Bread-making  
Ghost stories at Halloween

Fly Fishing  
Cyder-making  
Coppicing  
Dowsing  
Scything  
Mosaic  
Badgers  
Upholstery  
Storytelling  
Hedgelaying  
Felt-making  
Signwriting

Contact Anne Holden: 01787 229955  
[info@assingtonmill.com](mailto:info@assingtonmill.com)

[www.assingtonmill.com](http://www.assingtonmill.com)



## COMMUNITY COUNCIL REPORT

Meeting: 1st May 2013

Chairman: Alex Badman 262994

Iain Wright, acting chairman, welcomed members to the meeting.

### MATTERS ARISING

**Village Christmas Tree:** The fixing will go ahead now the weather has improved. It was felt the drum currently used should be kept for the time being.

**Notice Boards:** The Community Council notice board in High Street has been repaired by Roy Norfolk. He has begun constructing a replacement board to be put on the Old Forge, next to Forget Me not.

**Parish Council Representative:** Gerry Battye said the PC is now at full compliment and he hopes a member of the PC will be named as representative for the CC Executive later this month.

**Executive Committee Vacancies/Responsibilities:** It was felt a stronger executive was needed and word of mouth was the best way to recruit new members. Claire Buller suggested the Quiz may provide a good opportunity to ask for volunteers to join the CC exec.

**Grants:** There were no new grant applications.

### RECENT ACTIVITIES

**AGM:** The next AGM will be on the same evening as the VPMC's AGM. It was suggested making it more of a social event may attract more people to attend. Having a speaker, a wine tasting or cheese and wine evening were mentioned, the latter being favoured.

### TREASURER'S REPORT

Bryan Smith's report stated income totalled £1,510.90 which included Community Times £1,227.50 and Calendar £245. Expenditure totalled £1,589.50 which included Community Times £402 and grant to Village Hall £1,000. Unencumbered assets stood at £17,055.60.

### COMMUNITY TIMES

Lorraine Brooks said including a 'see it snap it' photo in each issue has been suggested - please submit photos of things spotted in the parish. The first photo will be of St George's flag being raised on St James Church.

### VILLAGE CALENDAR

Lorraine Brooks said the photographic competition for next year's calendar will be held on Bank Holiday, 6th May from 1.30pm-4pm in the Church Hall. There have been just over 90 entries, slightly down on last year probably due to the weather not providing good scenes.

It was agreed to order 300 copies of the Calendar, costing just over £600. Sponsorship had produced £300 income.

### FORTHCOMING ACTIVITIES

**Fundraising activities for 2013:** Ideas mentioned included street fayre, music festival and coffee morning. It was felt the committee is not currently strong enough or has sufficient volunteers to hold a fayre or festival. It was felt a coffee morning would be asking societies to repeat what they already do for their own societies.

It was felt the most viable suggestions were: a live band in the village hall, a barn dance or a Valentines dance.

Holding a raffle at the monthly Farmers market was suggested.

**Village Quiz - Friday 4<sup>th</sup> October:** Rachel Hitchcock would be leading in a similar way to last year. Alex Badman will liaise regarding appealing for questions from societies.

**Bonfire Night - Tuesday 5<sup>th</sup> November:** Alex will increase the order of fireworks ordered this year. Alex will liaise with Claire Buller regarding the order for sparklers and glow-necklaces. The hall/playing field are booked. A volunteer for

pyrotechnic training is required; it involves one Sunday at Mersea learning safe use of fireworks and first aid.

**Christmas Fayre - Sunday 1<sup>st</sup> December 12-2pm:** A volunteer is needed to help co-ordinate the Fayre.

### SOCIETY REPORTS

**Village Players:** Their production, *Hay Fever*, was very successful. Auditions for their next production, *Murdered To Death*, will take place in July.

**Youth club:** They are grateful for support of the Table Top Sale, another will be held in September. They are holding a Snail Race Night on 21st June, tickets are available from the Post Office and Youth Club.

**HortSoc:** Lorraine Brooks said they are delighted their events have been very well supported; the Talk on Dahlias and AGM and Quiz evening, the Spring Show went very well despite it snowing on the day.

The Morning Market will be on 18th May, the coach outing is full to Sissinghurst Castle Garden on 11th June, there will be a film screening of *Digging For Victory* about Capel St Mary allotments and their produce show on 18th June.

The scarecrow and hanging baskets competitions will take place in July and the show in August.

**Conservation Society:** Jill Badman said about 100 people attended the Test Pit Dig results talk by Carenza Lewis. Another smaller dig may be arranged if funding to pay the team at Cambridge can be found.

They have a footpath walk on 6th May, Open Gardens on 9th June and John Rix will be talking about *Farming in the Stour Valley* on 24th June.

**Nayland Fundraising Committee:** Jill Badman said the their Coffee Morning went very well raising £450 plus for the Shelley Centre for Therapeutic Riding.

Their next event will be a Cabaret Evening in aid of Ovarian Cancer.

**Women's Institute:** Wendy Sparrow said Charlie Haylock's talk on *An Eccentric Look at Suffolk* had been fun. Their annual meeting will be held on 20th May.

**Choir:** Richard Fernandez said they are rehearsing Verdi's Requiem for their performance with Bury Bach Choir at Bury Cathedral on 18th May and are looking forward to their participation at the Albert Hall on 7th July.

**Art Group:** Colin Ramsell said they are planning a outing to Christchurch Mansion and looking forward to another tutorial with Keith Whitlock.

**Woodland Corner:** Rachel Hitchcock said they had a very positive AGM and the of children attending has risen this term. They aim to keep fees which cover running costs as low as possible, their fundraising income purchases equipment. They will be holding a ladies evening again.

**Parish Council:** Gerry Battye said they were progressing with their programme of street lighting upgrades and he asked for feedback following the Parish Assembly.

Members felt the speaker had been rather controversial and negative and didn't go down well, some felt local reports were wanted, some felt discussion of a local issue is the best way of attracting people to attend.

### NEXT MEETING

The next meeting will be on **Wednesday 3rd July 2013**, Church Hall, 8pm with Exec at 7.30pm.

Future meetings are scheduled on Wednesday 4th September, Wednesday 30th October, Monday 13th January 2014 & Wednesday 5th March 2014 the AGM.



# COMMUNITY NAYLAND and WISTON WEBSITE

[Home](#) [Latest News](#) [What's On](#) [Feedback](#) [Usage](#) [About](#)

## CELEBRATING A DECADE OF OUR COMMUNITY WEBSITE

[www.naylandandwiscon.net](http://www.naylandandwiscon.net)

Home  
Churches  
Church Hall  
Classified Ads  
Community Times  
Directory  
Events  
History  
Links  
Local Services  
Map  
Memorabilia  
News and Notices  
Organisations  
Parish Records  
Village Calendars  
Village Hall  
Village Past Events  
Village Views  
War Memorials  
Guest Book  
Site Usage  
About This Site

Site Hits  
Total: 774412

"We are very fortunate in having one of the best Village websites in the country. It is easy to use; informative and allows others to have an insight into the organisation and activities in our Village. Not surprisingly this has been picked up by a national newspaper that has identified Nayland as one of the most popular villages in which to live. Unfortunately many of our residents are unaware of this marvellous facility, perhaps those who have not done so should log on to find out what they are missing. It allows people to book our village and church halls. We are very fortunate to have Graham Griffith's expertise." **Andrew Gowen, VHMC & Church Hall**

"As Parish Recorder, appointed by the Suffolk Local History Council, the most important part of my role is to try and record as much information as I can about the present everyday life and events in Nayland and Wiston for future generations. From my point of view I think the Community Website is also a most valuable way of doing this and between us I hope we are fulfilling this function. I would personally like to congratulate Graham Griffiths on completing his first ten years as Webmaster and to thank him for taking on this role back in 2003. He certainly helped to put Nayland and Wiston on the map." **Wendy Sparrow**

"The community website is a wonderful facility. Not only it is vital for promotion for the village calendar and Community Times to the world it enables me to keep my finger on the pulse of what is happening in the community. It is also a fantastic platform to record past village activities for all to see. Thank you Graham for providing this valuable asset." **Lorraine Brooks, Community Times**

"The Village Players would like to congratulate and thank Graham Griffiths for his first 10 years at the helm of the Community Website. We find it an invaluable tool when planning the timing of our productions, consulting the Events Village Calendar, to ensure we are not clashing with other village activities. Further it is always our first call in our efforts to publicise our productions and our society." **Bryan Smith, Village Players publicity**

## Quiz: How well do you know YOUR community website?

**First Prizes: £20 & £10 for aged 12 & under. Open to all.**

The questions are shown below but the quiz entry sheet is available on the home page of [www.naylandandwiston.net](http://www.naylandandwiston.net). Closing date is Friday 28th June.

**The answers to all these questions can be found easily on the website.**

Once you have answered the questions and completed a tie breaker, "*What I like about Nayland with Wissington*" in no more than 15 words, submit the form by email, post or via the Community Times box in the Post Office. The winners will be revealed at the Community Council meeting on 3rd July and prizes will be sent to them.

- 1 How many hits has the website received (at the time of the Community Times going to print)?
- 2 What is the approximate population of Nayland with Wissington as stated by the Parish Council?
- 3 What is the capacity of the Church Hall for a closely seated audience?
- 4 When was the first issue of the Community Times available on the website?
- 5 What were the names of the five servicemen from Wiston who died in WW1?
- 6 Who took the photograph of the footbridge over River Stour tributary (flood channel)?
- 7 In which year was the book 'Memories of Nayland in the Twentieth Century' published?
- 8 What play was the first production of the Village Players performed in 1977?
- 9 The Nayland and District branch of the Women's Institute was founded in what month and year?
- 10 Who was the candidate in the 2003 Parish Council elections with the highest number of votes?
- 11 In 2004 the Conservation Society purchased Nayland Meadow. What size is the field?
- 12 Who took the aerial view photograph (No 6) of North East of Nayland Village with Gravel Hill?
- 13 What is the U.S. Army Air Forces ID number of 1st Lt. Charles F. Gumm Jr.?
- 14 On what date in October 2013 will the Village Cinema be held?
- 15 On what date was the Nayland & District Horticultural Society page last updated?
- 16 Who is membership secretary for the Village players?
- 17 On what dates in 2008 was the Village Festival held?
- 18 Who was the first person to comment in the Guest Book?
- 19 What is the registered charity number of the Friends of St James Church?
- 20 Who is the author of the online book '*The Cuddons of Nayland - An Ancient Suffolk Family*'?
- 21 What is the capacity of the Village Hall for dancing only?
- 22 On what date in 2005 was the annual meeting of the Parish Council held?
- 23 During the 2012 Jubilee celebration who won a prize for the best window display?
- 24 Who are the current members of the village calendar committee?
- 25 In what year was the Community Council established?

# NAYLAND WITH WISSINGTON PARISH COUNCIL

## Annual Parish Assembly: 22nd April 2013

Parish Council Chairman, Gerry Battye, welcomed about 30 members of the public to the meeting in the Village Hall. County Councillor James Finch, District Councillor Richard Cave, and all nine members of the Parish Council were present. The Chairman introduced the guest speaker, Jonathan Free, Head of Communities at Babergh District Council.

Mr Free explained that he was a joint appointee for Babergh and Mid Suffolk councils and his role was to support communities which involved anti social behaviour issues, grants and community funding, open spaces and countryside services and support for the arts. Changes now taking place included new community rights, neighbourhood planning, assets in the communities and the right of communities to challenge to run services for themselves.

He praised the Community Council and the village website which showed that the parish was clearly an attractive place in which to live but there had not been a lot of growth recently. As far as planning was concerned there had only been a small amount of development over the past 5 years. There was clearly a real interest in preserving the quality of life in the community but Mr Free said this could cause us hiccups.

With caps on public spending, there was a shift towards localism. The 2011 Localism Act included a raft of new community rights. There were changes in planning policy, the recent National Planning Policy Framework (NPPF) presumes in favour of development. Babergh was in the middle of a 4 year funding period and it was losing 40% of its revenue from central government. This reduction would have a major effect on delivering services.

The New Homes Bonus meant that every new house would bring in funding and some business rates being retained would give incentive to stimulate business. Babergh's spatial plan core strategy would be in place at the end of the summer. Nayland was designated a core village.

### NEIGHBOURHOOD PLANS.

Mr Free said that a Neighbourhood Plan gave a community an opportunity to develop its own plan for the area. If developed successfully it would be adopted and become part of the planning authority's planning policy. If there was no plan the NPPF assumes in favour of development. However, for Nayland that risk would be mitigated because of a footnote in the NPPF about the AONB which would put it in a different position.

Mrs Carver asked how much a Neighbourhood plan would cost. Mr Free said that after the community had submitted its proposals the district would organise and pay for an independent inspection. If this was successful a referendum, also paid for by the district, would be held in the community. If 51% were in favour the plan would be adopted by the District Council. The Government had a fund which parishes could apply to if they wished to employ a consultant to do all the work but this could cost £40,000. If a community had volunteers it may not need consultants.

Ray Spencer asked about housing needs. Mr Free said the plan would include all kinds of homes but the target was for 35% of new development. At the moment there were problems getting that amount from developers because of the cost of land.

B Smith asked where the development benefit would go if the village had a plan. Mr Free said at present Section 106 draws contributions from developers for things in the community but the District Council were working on moving away from this. With a plan the community would keep 25% for its infrastructure, 75% would go to highways, schools, etc.

A Murrison asked if the Parish Council would take over the plan operation. Mr Free replied that after adoption a plan becomes part of the formal planning policy and the District Council implements the decisions. Mr Murrison said that in the past there had been difficulty in amateur volunteers being accepted and that a lot of money would be wasted if a plan failed. Mr Free stressed effective community engagement throughout

was essential. G Battye commented that from past experience getting volunteer help had not been easy and to get 51% in a referendum would mean a lot of work.

J Cohen queried whether Enforcements ensuring developments were built according to plan would still rest with the local authority or would be transferred to the neighbourhood. Mr Free said at present this was still the local authority but the neighbourhood would have the right to challenge.

### COMMUNITY ASSETS

Mr Free explained that where there is an amenity the community wants to keep, e.g. open spaces, the parish have an opportunity to apply to the district saying they want it to be considered an asset. If this is agreed then that property goes on to an asset register. If that property ever comes up for sale the parish can say they want to buy it. This puts a moratorium on the property. The community had 6 months to buy it to stop private individuals.

### RIGHT TO CHALLENGE

With the serious reduction in funds Mr Free said the District Council would not be able to deliver all the services as previously. Some would be stopped and some scaled back. If a parish could run a service better than the district it could bid to run that service. There was a shift towards communities doing more for themselves and to attract funding for growth. If Nayland wanted to stay as it was and the district stopped services this could be difficult. Would the community take over these services? Local Government research showed that at the end of the decade there would only be enough money for social care and waste collection and nothing else.

R Spencer suggested Mr Free was scaremongering but he said that bigger reductions in the next two budgets were forecast.

County Councillor J Finch confirmed the 40% cuts and that there were more to come. The County Council must save £150m and there was a need to do things differently. Priorities were disadvantaged children and care of the growing adult population. However, not one library had closed because the community had taken up the challenge and costs had reduced. The library service would be reduced gradually but not stopped. B Smith referred to an attempt 12 years previously to have a library in the Village Hall when the County had insisted it would have to be run by a professional but they could not afford this. J Finch replied that circumstances had changed. District Councillor R Cave commented that 70 services are statutory and finance would have to be found for these.

Andrew G queried whether the rates and waste collection for the Village Hall would continue to rise. Mr Free said there was a cap on Council Tax but he didn't know which services would cease. Most were under extreme pressure but money had to be saved where possible. Staffing levels will fall but the district councils were trying to keep the front line.

### FURTHER QUESTIONS AND COMMENTS

**A134 junction:** N Barton asked if there were any plans to improve safety at the A134/Bear Street junction. J Finch said this was an ongoing issue. The key problem was speed which he and the Parish Council were discussing with police and highways. Mrs George commented that there had been numerous site meetings with all parties over more than 30 years. Everyone agreed it was not a straightforward junction.

**Potholes:** Mrs Stiles spoke about the potholes in Fen Street and elsewhere and Mr Finch said the County were doing what they could.

**Village Hall:** A Gowen said the Hall had a surplus of £2,000 but only because of fundraising by the committee. More money had to be put aside for the cost of future maintenance which was greater every year. There was £10,300 in the endowment fund set up a few years ago which included contributions from the Community Council. He appealed to residents to remember the hall in their wills. The Village Hall was a valuable asset and must be looked after.



# NAYLAND PRIMARY SCHOOL SUMMER FETE

11am – 1pm

**Saturday 15th June 2013**

**LOTS OF FUN FOR ALL INCLUDING:**

**DONKEY RIDES**

**FACE PAINTING**

**FOOTBALL COMPETITION**

**BOUNCY CASTLE, COCONUT SHIE**

**HOOK-A-DUCK**

**JEWELLERY, CARDS, SWEETS,**

**TOYS, BOOK & ECO STALLS**

**TOMBOLA - RAFFLE**

**TEAS, COFFEES, CAKES & ICE LOLLIES**

**REFRESHMENTS, WINE, BARBECUE**

**ENTRANCE: 50P PER ADULT**

**CHILDREN FREE**



## Nayland & District Horticultural Society SCARECROW COMPETITION

Why not join the friendly rivalry?

This is a fun competition.

The family can work together.

The whole community enjoys seeing these new residents popping up in front or back gardens and allotments.

**Winner receives £10**

Entry costs just 10p

Open to residents of Nayland & Wiston

Scarecrow to be made by the entrant/s

Closing date for entries

**Saturday 6th July**

Judging takes place in situ on

**Saturday 13th July**

Entry forms are available in the Show schedules

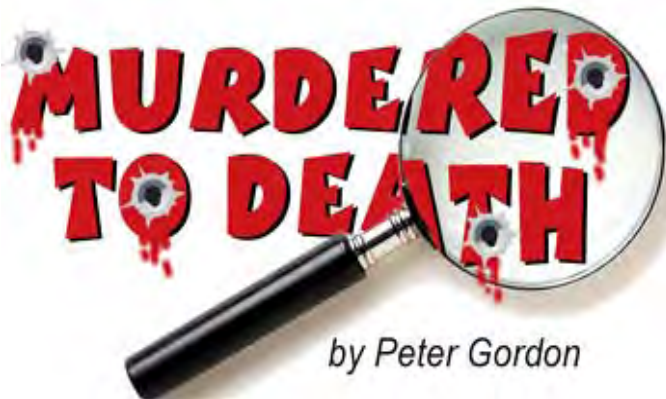
or from the Post Office, Kerridges

on [www.naylandhortsoc.org.uk/SummerShow](http://www.naylandhortsoc.org.uk/SummerShow)

or from Lorraine 262807 or Trevor 262022.



The Village Players are presenting  
the very amusing play



**between 5th-7th December**

There are lots of parts for many adult ages  
as well as backstage crew needed.

## AUDITIONS

are on Wednesday 17 July at 8pm  
and Sunday 21 July at 5pm  
in the Nayland Church Hall.

Ring Jim on 01206 262535  
for more information



## STOUR BORDER Country Music Club

Nayland Village Hall 7.30 - 10.30

Admission, usually £4, doors open 7pm

No bar – please bring your own drinks.

Tea/coffee & light refreshments available

**SUNDAY 26TH MAY**

**'Best of Friends'**

*A great return for this top duo from Nottingham*

**SUNDAY 23RD JUNE**

**'Kenny Paul'**

*A welcome return for this solo act from Ireland*

**SUNDAY 21ST JULY**

**'Brian's Country'**

*A welcome return for Brian Mann radio DJ*

**SUNDAY 18TH AUGUST**

**'Bob Keeley'**

*First time here for this up and coming solo star*



## SEE IT, SNAP IT, SEND IT...



NAYLAND WITH WISSINGTON COMMUNITY TIMES

Mike Hunter took this photo of James Carver changing the Union Jack flying from St James church to St George's Flag for 23rd April.

*If you have a snapshot taken in the parish to feature in future issues please send it to [lorraine.nayland@btinternet.com](mailto:lorraine.nayland@btinternet.com)*

## ROGATION SUNDAY



A crowd of parishioners marked Rogation Sunday by taking part in a trailer ride around the village to Wiston. Starting from St James's Church, the tractor and trailer travelled up Gravel Hill to Shaddelows Farm then back through the village finishing at Wiston Mill for tea. Along the way they stopped at various places for prayers to bless the crops and hymns led by the Rev Adrian Mason.



## NAYLAND VILLAGE HALL CINEMA

Start 8pm Bar open at 7.30pm

Tickets £5 (inc tea/coffee and biscuits) Ice cream available available from the Post Office (afternoons) or on the door

MAGGIE SMITH TOM COURTENAY BILLY CONNOLLY  
PAULINE COLLINS MICHAEL GAMBON

## QUARTET



## ARGO

BASED ON THE DECLASSIFIED TRUE STORY

Friday 28th June



Friday 26th July



Nayland - with - Wissington Conservation Society

Registered Charity No 268106

# NAYLAND OPEN GARDENS

SUNDAY  
JUNE 9<sup>th</sup>

2-6 pm

Tickets from Gardens & Hall  
£5- children free

TEAS  
IN THE VILLAGE HALL

CAR PARKING

[www.naylandconservation.org.uk](http://www.naylandconservation.org.uk)

## Nayland with Wissington 2014 Calendar

Fantastic new views of the parish  
accompanied by historic views and notes

Still priced at just £5 !

They make ideal gifts

Calendars will be on sale from  
3rd August at the  
Nayland Flower Show  
(2pm-5pm Village Hall)

After this they will be on sale at various village events  
and at the Post Office, Hatten's Stores and Forget-Me-Not



Photography: Catherine Bishopp Source: Tradition Nayland

### September 2014

1 Mon	16 Tue
2 Tue	17 Wed
3 Wed	18 Thu
4 Thu	19 Fri





Nayland – with – Wissington Conservation Society

Registered Charity No 268104

# FARMING in the STOUR VALLEY



A Talk by ~

Approx. 8-30

**JOHN RIX**

**MONDAY JUNE 24<sup>th</sup>**  
**NAYLAND VILLAGE HALL**

7-40 for 8 pm

~ALL VERY WELCOME

Nayland & District  
Horticultural Society

Film screening

## Digging For Victory

Directors: Darius G Lows & Nick Woolgar  
Cert U - 60 mins

**Tuesday 18th June**

7.30 for 7.45pm

Church Hall, Bear Street, Nayland  
Refreshments, Free Entry, All welcome

In the run up to the Annual Flower & Produce Show in Copel St Mary, some of the most passionate growers around prepare their crops to see just who can grow the biggest pumpkin. Digging for Victory is the charming story of a Suffolk village allotment and the dedicated growers, enthusiasts and contenders who tend to their fruit and vegetables. With a diverse cast of characters and a quirky yet affectionate style, this is a warm and nostalgic look at this most British of past-times. A feel-good film guaranteed to entertain and inspire.

[www.naylandhortsoc.org.uk](http://www.naylandhortsoc.org.uk)

**Nayland Youth Club**  
in partnership with Nayland Primary School  
and Woodland Corner

## Snail Race Night



**Friday 21 June**

Nayland Village Hall starting at 6 pm

**First Snail Race at 7.30pm**

The evening will include:

**BBQ • Licensed Bar • Tuck Shop  
Bouncy Castle • Outdoor Games • Raffle  
Six Snail Races**

**A fun night for all the family**

**Tickets £2.50 per adult  
Children and Young People Free**

Available from: Nayland Youth Club,  
Nayland School, Woodland Corner,  
Post Office, Nayland Church



**Come and Visit  
Nayland School's**

## Outstanding Duckling Class

**Parent Drop-in**

Friday 14th June 9.15 to 10.30am

**Drop-in and Play**

For parents and children  
Thursday 6th June 12-1pm

**Ducklings September 2013 - July 2014**

Applications welcomed for children  
who are 4 years between  
1st September 2013 and 31st August 2014







# Nayland & District Horticultural Society CHILDREN'S & FAMILY'S CLASSES NAYLAND FLOWER SHOW

**Saturday 3rd August**  
2pm-5pm Nayland Village Hall

An animal or person made from vegetables and/or fruit  
'I grew this myself'  
Cardboard Creation  
Jar of named wild flowers  
Decorated cresshead  
Garden-on-a-plate  
Photo of a 'My Favourite Toy'  
Decorated fairy cakes



Entries in by 31 July. Children's classes are free to enter. Youngsters can also enter other classes for: Vegetables, Fruit, Flowers, Flower Arranging, Cookery, Preserves, Art, Craft & Photography  
*Show schedules available at local shops, Lorraine 262807 or [www.naylandhortsoc.org.uk](http://www.naylandhortsoc.org.uk)*

★ ★ ★ ★ ★

## Songs from the Shows

★ ★ **Tinuke Olfimihan** ★ ★  
**Paul McGrath**

**Sunday 28th July**

★ 5.30pm in the Village Hall ★

Tinuke and Paul are again playing a concert on 28th July at 5.30pm in the Village Hall.

They will be choosing from 'Songs from the Shows' for a relaxed and convivial evening.

There will also be 'The Three 'Erberts' group, comprising Etienne, Rafael and Tilly singing some original as well as traditional songs.

Tickets from Nayland Post Office (afternoons) from 1st July or at the door.  
Doors and Bar open at 5pm




Woodland Corner

## FUNSHINE SUMMER HOLIDAY CLUB

**4 – 11 YEAR OLDS**  
**29th July – 2nd August 2013**  
**27th – 30th August 2013**

We are now booking for our Summer Holiday Funshine Club.  
**Book early to avoid disappointment!**  
Booking forms and further details available from Woodland Corner.

<http://woodlandcornernayland.blogspot.com>  
Tel: 01206 263054  
Email: [enquiries\\_wc1@btconnect.com](mailto:enquiries_wc1@btconnect.com)

Woodland Corner, in the grounds of Nayland School,  
Bear Street, Nayland, Colchester CO6 4HY





**THE HARE  
& HOUNDS**



LEAVENHEATH

**INVITATION**  
from  
*'Your Local'*

16th June: Fathers Day Lunch

23rd June: Leavenheath Open Gardens  
Scarecrow's Platter, BBQ,  
Guest Ale, Bouncy Castle

Sunday 21 July: Summer Quiz (6pm)



**01787 212396**  
[www.hareandhoundsleavenheath.co.uk](http://www.hareandhoundsleavenheath.co.uk)

**Colin's Holistic Therapies**  
within Nayland Dental and Cosmetic Clinic

**Every Tuesday and Thursday**





**Holistic, Deep Tissue and Lymphatic Drainage  
Massage Therapies**  
1 x hour appointment £40.00 or 1.5 x hour appointment £55.00

**Hopi ear candling**  
1 session £30.00 or 3 sessions £75.00

**Special Offer**  
**1 x hour holistic massage and  
1 Hopi ear candling treatment**  
Reduced from £70.00 to £55.00

Call 01206 262262 or 07737 337 806  
for details or to book  
Email: [colinasmassagetherapy@gmail.com](mailto:colinasmassagetherapy@gmail.com)  
Website: [colinsholistictherapies.co.uk](http://colinsholistictherapies.co.uk)

**Nayland House**  
Off Bear Street  
Nayland CO6 4LA

**We offer long and  
short term care for elderly  
and dementia residents  
in our beautiful home set  
in the heart of the village**

**You are very welcome to  
visit – come and see our  
excellent facilities**

**For more information  
please telephone:  
**01206 263199****






**NAYLAND CARE AGENCY LTD**  
Award Winning Professional Company Throughout Essex and Suffolk.

Providing exceptional quality home care services to  
support you with independent living, from assistance with  
personal care to administering of medications  
All staff are subject to references and CRB clearance at  
enhanced level and are fully trained in all aspects of care

If you would like a free no obligation appointment to discuss  
your required level of support we will arrange for one of our  
trained assessors to visit you in the comfort of your own home.

**Please call us on  
01473 231444**

Email: [admin@naylandcare.com](mailto:admin@naylandcare.com)  
[www.naylandcare.com](http://www.naylandcare.com)

Registered with the Care Quality Commission and members of the United Kingdom  
Homecare Association.  
Business Award Winners 2003 2004 2005 2009



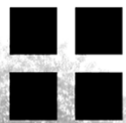
## JMAC INTERIORS

### Professional Painter & Decorator

- All Interior & Exterior Work Undertaken
- Wallpaper Hanging to the Highest Standards
- Approved Dulux Select Decorator and Government Trustmark Approved
- Fully Insured
- References Available



Contact: Jeff Macdonald  
Tel: 01787 224674 – Mobile: 07778 031505  
Email: jmacinteriors@aol.com



## Water Lane ARCHITECTS



An RIBA Chartered Practice

- Architectural services for new and existing buildings
- Houses, schools, commercial and development schemes
- Designs for greater sustainability — AECB member
- Working with clients' budgets, timescales and aspirations

Chris Exley, RIBA, AECB  
info@waterlanearchitects.co.uk  
www.waterlanearchitects.co.uk

07827 414847  
01206 890178

## A.D.J Design

### Architectural Services

### Planning & Building Regulations

Architectural plans drawn for new homes, extensions, loft conversions & alterations.

Extensive local portfolio of design and building projects.

Ashlaburn  
Coach Road  
Gt Horkesley  
Colchester  
Essex  
CO6 4AS

**Tel: 01206 271163**

**www.adjdesign.co.uk**

## Nayland Dental and Cosmetic Clinic



18 High Street, Nayland, Suffolk, CO6 4JF

Family Dentist  
Children welcome  
Teeth whitening

Hygienist  
Facial Rejuvenation  
Lip Enhancement

### Private Dentistry at Affordable Prices

Teeth Whitening for £199  
Lip volume & refresh from £225  
Dermal Fillers per syringe £250  
Wrinkle & line softening 3 areas £215  
All treatments carried out by an experienced qualified Dental Practitioner: Dr D G Figaji B.CH.D (STEEL)



Call us to book  
an appointment  
or request an  
information pack

**01206 262262**

info@naylanddentalclinic.co.uk

beautiful  
Eye Brows  
are NOW yours



Now  
Available

**bdb**  
billion  
dollar  
brows

Simply Skin  
within

Nayland Dental and Cosmetic Clinic  
High Street Nayland, CO6 4JG

Tel: 01206 530 259

## PETER MOSS & SONS

Providing all aspects of  
vehicle maintenance



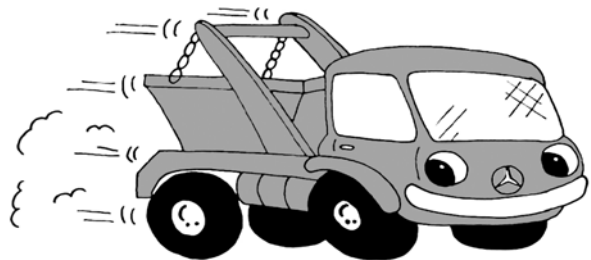
**68 Bear Street  
Nayland  
Tel: 01206 262866**

**SERVICING ▪ REPAIRS**

## BUGG SKIP HIRE

**For All Your Waste  
Disposal Requirements**

- Excellent Service
- Lowest Prices
- Various Sizes to Suit Every Situation



**Tel: 01206 262605**

**[www.buggskiphire.co.uk](http://www.buggskiphire.co.uk)**

The Woodyard, Gravel Hill, Nayland, CO6 4JB



*Gladwins Farm*

*Harpers Hill*

*Nayland*

*Suffolk CO6 4NU*

*Tel: (+44) 01206 262261*

*Fax: (+44) 01206 263001*

*E-mail: [contact@gladwinsfarm.co.uk](mailto:contact@gladwinsfarm.co.uk)*

*[www.gladwinsfarm.co.uk](http://www.gladwinsfarm.co.uk)*

- Award-winning self-catering cottages – sleeping 2–8 people. Charming conversions of period farm buildings, some are designed to be accessible by accompanied disabled visitors, some luxury cottages with private hot tubs.
- Moving house? Longer tenancies in the Winter period can be arranged.
- Keep fit in our swimming pool – open to non-residents on a contract basis, shared and sole use times.
- Swimming lessons throughout the week. Fully air-conditioned in a lovely building. Available for childrens' parties.
- Guests have the use of the pool, sauna, hard tennis court and playground. The lake is stocked with coarse fish. Pets welcome.

*Brochure and details available from Stuart and Susie Bradshaw. 01206 262261*

*[www.gladwinsfarm.co.uk](http://www.gladwinsfarm.co.uk)*



We are based in Myland in Colchester and offer a wide range of services to include:

- All aspects of carpentry including Kitchens, Storage Solutions, Wardrobes, Hanging Doors, Shelving
- Laying wood & laminate flooring
- Tiling walls and floors
- Painting & decorating
- Fencing, Decking, Pergodas, Sheds

We will also do all those small jobs such as assembling Flatpacks etc

Please visit our website to view our work and to see full range of our services:

**www.colchestercarpenter.com**

References available

Please call for a free quotation on

**07527 427788 or 07779 621892**

**01206 842835**

*Matthew Gough*  
MPTA, Btec, HND, C&G Pts 1&2

## PIANO TUNING PIANO SALES AND HIRE



- PIANO TUNING, REPAIRS AND FULL RENOVATIONS

• **QUALITY BRAND NEW AND YAMAHA PIANOS FOR SALE OR MONTHLY HIRE!**

• **HIRE FROM ONLY £75 PER MONTH A GREAT WAY TO TRY A QUALITY PIANO BEFORE YOU BUY**

Frinton-on-Sea

*Established since 1988 and Fully Qualified  
Covering the Nayland area for 25 years*

**01255 670780**

www.second-hand-pianos.co.uk

## PLUMB & SON LTD YOUR LOCAL PAINTER & DECORATOR

- Property Maintenance
- Project Management
- Inside & Out

**Fully Insured - Friendly Professional Service  
No Job too Big or Too Small**

Call Barney for your free quote: **01206 264116 07856 540664**  
or email: [plumbandsonltd@gmail.com](mailto:plumbandsonltd@gmail.com) 2 Laburnum Way, Nayland CO6 4LG



## PRINCIPLE HEATING SOLUTIONS

Proactive from conception to completion

e: [daren@principleheatingsolutions.co.uk](mailto:daren@principleheatingsolutions.co.uk)  
w: [principleheatingsolutions.co.uk](http://principleheatingsolutions.co.uk)

t: 07976 151595



oil Wood  
biomass burners  
servicing logs chips  
installation pellets



Recommended Installer



**Renewable Heat Incentive (RHI)  
Grants available**

Supply and installation of wood burning stoves and boilers

Oil boiler servicing and installation

Supply and installation of oil tanks

**Please call or email for your free  
no obligation quote**



74 HUNGERDOWN LANE  
LAWFORD  
COLCHESTER  
ESSEX  
CO1 2LX



## Nayland with Wissington Parish Council Are You Cutting Back?

Do you walk in the village with a buggy, pram or push-chair? Do you go to the Post Office or Hall using a walking aid? You will be aware of the problem created by overhanging bushes, climbers etc. hanging over walls and narrowing the width of the footway in the village centre. Perhaps **your** tree shades a public street light? I thank those residents who have already cut back their trees and bushes that overhang the pavement or mask a street light in front of their house. I now plead that we all check that overhanging ivy on walls, bushes, plants, trees etc. do not overhang or impede. Plant and bush growth caught many of us out last autumn and this spring. Elderly pedestrians and parents with prams who have contacted me about this problem, would be delighted and would feel safer in being able to use the whole width of the pavement. Can I also plead that **home-owners check** whether their foliage masks the full beam of the street lights in front of their houses and attend to their pruning preventing other reminders being issued. This will make Nayland a safer place. **Many thanks for contributing to the community spirit!**

**Gerry Battye, Chairman**



**Churches of  
Leavenheath,  
Nayland, Wiston  
Polstead and  
Stoke by Nayland**

For children and parents  
1<sup>st</sup> Sunday, every two months  
4pm until 6pm  
Activities, crafts, worship  
followed by afternoon tea.

**May 5<sup>th</sup> Polstead Church, -  
Pentecost party**

**July 7<sup>th</sup> Leavenheath Village Hall  
Peter and Paul**

**Sept 8<sup>th</sup> Nayland Village Hall  
Harvest extravangza**



**Nayland & District  
Horticultural Society**

Coach outing to

**RHS Wisley  
Garden & Autumn Show  
Sunday 8th September**

coach leaving Nayland 9am - leaving Wisley 4.30pm

This is open to non-members and the cost is £16

If you wish to book a seat please complete the booking form below and send, with your payment to: Mrs L Brooks, 50 Gravel Hill, Nayland CO6 4JB or place in the Community Times Box in the Post Office (cheques payable to Nayland & District Horticultural Society). We will run a reserve list so if anyone who has booked finds they cannot come we will hopefully be able to sell their ticket. For more information or cash payment please ring Lorraine on 262807 or email: [lorraine.nayland@btinternet.com](mailto:lorraine.nayland@btinternet.com)



## RHS Wisley Garden & Autumn Show Booking Form

You will receive an acknowledgement of booking.

I would like to book ..... seat(s) No. of Nat. Trust Members ..... Payment attached: £.....

Name: ..... Tel: .....

Address: .....

Email: .....

Names of Guest/s: ..... Where boarding coach: Harpers Est / Parkers Wy / Stoke Rd





## St James Church Kneeler Projects Book

Jeanette Finch, Vivien Turnbull, Peter and Anna Mann and Lorraine Brooks have produced a book featuring the Kneelers which have been crafted in the last 16 years by so many volunteers. The spiral bound book has full colour pictures of all the Kneelers, each accredited to the person who made it, and is a beautiful record for the future.

If you would like your own copy, please phone Alan on 262800, who can supply one for £12.50. If you would like to see a copy first, there is, of course, a copy in St. James' Church.



A huge thank you to everyone who helped at the Fete this year, both on the day and in advance. However, the event also depends on the generosity of all those people who give us items to sell for which we are extremely grateful. Sponsorship from Boydens, Reemans, Gladwins Farm and Buggs Skips enables us to offer a generous raffle prize and to reduce the Fete expenses. All of these ingredients go towards making our Church Fete one of the most successful locally, or even, dare we say it, in East Anglia!

Well done to everyone and thank you again for all your support for me and the committee of Terry Bannister (sports), Nathan Crame (field set up), Annie Elston (stalls), Anna Mann (gate), Gill Stanton (Raffle) and James Carver (notices).

We are especially grateful to Nicola Thorogood, Iain Wright, Paul and Clemency Doxey, Will and Angie Pavry and Dawn Kendall for the loan of their tents.

Last but not least a special thank you to Jane Gray for taking on the tea organisation and to those who "volunteered" to help on the day and to everyone who made so many delicious cakes.

This note is written before the Fete takes place and the result is not known, but whatever happens on the day, it will be another great community event and hopefully much enjoyed by many hundreds of local people and visitors.

The leftover items are given to Arthritis Research in Colchester and the books go towards the NSPCC giant book fair at Holmwood House School

*Andora Carver, Chairman, Fete Committee*

Nayland & District  
Horticultural Society



# SUMMER FLOWER SHOW

Saturday 3rd August

2pm-5pm Nayland Village Hall - Admission 50p

Produce Stall, Teas, Raffle, Nayland Calendar 2014



Classes for: Vegetables, Fruit, Flowers, Flower Arranging, Cookery, Preserves, Art & Craft, Photography, plus Children's & Family's Sections - open to non-members - entries by 31st July  
Show schedules available at local shops, Lorraine 262807 or [www.naylandhortsoc.org.uk](http://www.naylandhortsoc.org.uk)





# Nayland with Wissington Society News



## NAYLAND & DISTRICT EMERGENCY FIRST RESPONSE TEAM

Co-ordinator: Karen Elliott on 01206 263233 or kazelli@btinternet.com

### We need your help...

Nayland First Responders are a team of volunteers who attend medical emergencies within the local area. We are looking for more volunteers so that we can provide as much cover as possible.

The group have monthly training meetings and duties are very flexible to fit in with other commitments. Are you are interested in joining us, or perhaps know a friend who may be?

If so, please contact Karen Elliott on (01206) 263233 or email kazelli@btinternet.com



## ROYAL BRITISH LEGION

Secretary: Andrew Gowen 262534 parkersag@yahoo.co.uk

Chairman: Ken Willingale 262531

The visit to the Combined Services Museum at Maldon and subsequent lunch at the Queen's Head on Maldon Quay on 24<sup>th</sup> April was most enjoyable and rated a great success by all those that took part. We strongly recommend the Combined Services Museum to you all. Very few of us had heard of it before we went and it is an ideal visit for the family of all ages. It has masses of material on the wartime spies and details of the real spy who Fleming used as his model for James Bond. There is also much much more to see. Strongly recommended.

Our visits are not restricted to Royal British Legion Members and we welcome anybody who wants to join us. We are visiting Boxted Airfield Museum during the evening of 17 July and will finish up at a pub and we are having a day visit to Martlesham Airfield Museum on the 16<sup>th</sup> October. John Partridge is organising these visits so let him know on 263733 if you are interested.

We are still trying to sort out our Christmas present distribution and will let you know the outcome. We have been doing it for years and do not want to stop this if at all possible.

The Suffolk Royal Legion HQ is moving to new accommodation (Unit 2, Hill Farm Barns, Ashbocking Road, Henley, Ipswich IP6 0SA on 1 June. Telephone not yet sorted out but the email remains the same: sbromley@britishlegion.org.uk. It is a bit out in the Sticks!!

Our next meeting is at the Anchor on 22<sup>nd</sup> July from 7.30pm.



*Twenty-nine members visited the Combined Military Services Museum at Maldon on 24th April and then went on to a Pub on Maldon Quay*



## NAYLAND AND DISTRICT WOMENS INSTITUTE

Secretary: Jeannette Finch 262993

For our 56<sup>th</sup> Birthday celebration on 18th March, we all enjoyed a delicious lunch at The Hare and Hounds at Leavenheath, which was well supported. At our April meeting we had an amusing talk by Charlie Haylock on *An Eccentric Look at Suffolk*. He was very entertaining with his different dialects and we were told you have to shape your mouth and put your tongue in different positions.

We continue to enjoy coffee mornings in different members houses each month.

May 20th will bring changes to the Committee as we have our Annual Meeting, and also Resolutions to discuss. On 17th June Wendy Sparrow will be leading a guided walk in Nayland and John Stewart will be talking about St John Ambulance on 15th July. We would love to have some visitors, so come along for 7 30pm.





## PRAM & TODDLERS IN CHURCH

ST JAMES' CHURCH NAYLAND

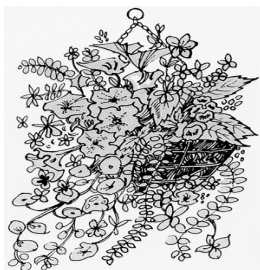
SECOND FRIDAY OF THE MONTH AT 2pm

SUMMER: 14 JUNE; Thursday 11 JULY (Thursday for one month only); 9 AUGUST

SHORT INFORMAL SERVICE WITH SINGING, INSTRUMENTS, STORY AND PRAYER  
FOLLOWED BY DRINKS, BISCUITS AND TOYS

DO JOIN US - ALL WELCOME

For further information contact Rachel Hitchcock on 01206 263169/07788 954309



## HORTICULTURAL SOCIETY

Sec: Lorraine Brooks 262807  
lorraine.nayland@btinternet.com

[www.naylandhortsoc.org.uk](http://www.naylandhortsoc.org.uk)  
Chair: Trevor Smy 262022

Snow and bitterly cold winds did not dampen our spirits for our fourth annual Spring Show on the 23rd March. A steady stream of visitors popped in to enjoy refreshments and a chat in the colourful and

fragrant atmosphere provided by the displays. We were delighted to see them and very grateful they ventured out in such conditions.

The show attracted just over 60 entries, from 10 entrants and the judges felt the quality of the exhibits were a credit to exhibitors, particularly bearing in mind the terrible weather conditions this spring, which had seen the coldest March 50 years.

HortSoc would like to thank the judges, our helpers, those who donated prizes or cakes, the entrants and visitors for their support. You all make this a great start to our horticultural year.

This was the first year that the Olive Noakes Trophy has been awarded for the highest number of points in the show. Olive's daughter Val presented the trophy to Lorraine Brooks who gained 25 points. Trevor Smy was not far behind with 20 points.

The full results were: Vase mixed flowers/flowering shrubs : Barry & Elizabeth Wakefield, Trevor Smy, Sheila Sessions; Vase flowering shrub or tree : Hazel Gardiner, Trevor Smy, Peggy Shreeve; Vase hyacinths : Lorraine Brooks; Vase 3 Tulips : Hazel Gardiner; Vase 1 Camellia : *No entries*; Vase 6 assorted Daffodil/Narcissus : Trevor Smy, Lorraine Brooks, Hazel Gardiner; Vase 6 Miniature Daffodil/Narcissus : Hazel Gardiner, Trevor Smy, Lorraine Brooks; Vase 3 specimen Daffodil/Narcissus : Trevor Smy, Hazel Gardiner; Flower arrangement of Daffodil/Narcissus : *No entries*; Flower Arrangement 'Spring Fever' : Lorraine Brooks, Hazel Gardiner, Barry & Elizabeth Wakefield; Pot of bulbs, corms or tubers : Lorraine Brooks, Barry & Elizabeth Wakefield, Helen Gladwell; Pot of 5 Daffodil/Narcissus bulbs : Lorraine Brooks, Helen Gladwell, Hazel Gardiner; Pot miniature Daffodil/Narcissus bulbs : Lorraine Brooks, Barry & Elizabeth Wakefield, Trevor Smy; Pot of Polyanthus/Primula : Lorraine Brooks, Trevor Smy, Sheila Sessions; Flowering Houseplant : Jean Evans, Lorraine Brooks, Sheila Sessions; 3 blooms floating in a dish of water : Lorraine Brooks, Trevor Smy, Barry & Elizabeth Wakefield; Rhubarb: 3 stalks : Trevor Smy.

The Church Hall was full as the chairman welcomed members to the Annual General Meeting and Fun Quiz evening on 16th April. He thanked Ken Willingale for auditing the accounts, Pat Bray for her press coverage, Andrew and Sue Gowen for hosting the summer party and the committee for their support. But most of all he thanked members for their support in attending and participating in our activities.

Tom Gardiner, who conducted the election of officers, said "The small committee should be congratulated on the number and quality of events that are organised." He urged everyone to visit the website which contains interesting news, information and past activities. Officers re-elected were Trevor Smy (chair), Lorraine Brooks (sec), Sylvia Bond (Treasurer), Anne Spencer, Hazel Gardiner, Colin Ramsell, Helen Gladwell and Sheila Wildish (committee).

Following the fairly brief formalities members settled down to find the solutions to the fun quiz with horticulture in mind. The winners were 'Green Grocers' with 'Botosh' just a few points behind.

Despite our concerns that the cold weather had not brought some plants forward regardless of our nurturing efforts the **Morning Market** on 18th May was successful in raising just over £260. It was a busy morning and a very happy atmosphere to relax and enjoy refreshments with friends. We are very grateful to everyone who supported the market.

In addition to our planned schedule of events we are planning the screening of **'Digging for Victory'** on **Tuesday 18th June**, 7.30 for 7.45pm in the Church Hall. Filmed at Capel St Mary, it is a charming story of a Suffolk village allotment and the dedicated growers, enthusiasts and contenders who tend to their fruit and vegetables. With a diverse cast of characters and a quirky yet affectionate style, this documentary is a warm and nostalgic look at this most British of past-times.

Schedules for our 32nd<sup>1</sup> annual **Flower Show on 3rd August** are available. The **Hanging Basket and Scarecrow Competitions** will be judged in situ on the days shown below – why not make it family fun and enter as a family or group. It would be delightful to see many 'new residents' popping up all round the village!

Forthcoming events include:

11 <sup>th</sup> June	Coach outing to <b>Sissinghurst Castle Garden &amp; Marle Place Garden &amp; Gallery</b> [fully booked]
18 <sup>th</sup> June	Film screening <b>'Digging for Victory'</b> [details page 12]
19 <sup>th</sup> July	Summer Garden Party for members [details page 10]
13 <sup>th</sup> July	Judging of the <b>Scarecrow Competition</b> [details page 9]
27 <sup>th</sup> July	Judging of the <b>Hanging Basket Competition</b>
3 <sup>rd</sup> August	Annual <b>Flower Show</b> 2pm Village Hall - schedules available in local shops or on our website [page 13 & 19]
8 <sup>th</sup> September	Minibus outing for members to <b>RHS Wisley Gardens</b> and <b>Autumn Flower Show</b> [page 18]





## NAYLAND WITH WISSINGTON CONSERVATION SOCIETY

Hon. Secretary: Andora Carver 262970  
carversnayland@talktalk.net

[www.naylandconservation.org.uk](http://www.naylandconservation.org.uk)  
Chairman: Mr J Alexander 262676

We were delighted to welcome Dr. Carenza Lewis back to Nayland on April 29<sup>th</sup> when she told us about the results of the Nayland Test Pit Dig last October. Almost 100 people from the village and beyond were there to hear her tell us that Nayland has one of the highest incidences in East Anglia of late medieval pottery (1350-1550). 72% of the 33 pits dug showed evidence of pottery of this period. The average is 19%. This confirms that Nayland was not affected by the Black Death in 1387-8. We already know that the main timber framed buildings in the village are of this period, so this discovery proves an interesting point.

The general feeling of the meeting was that we should arrange another smaller dig in the future to advance our knowledge of the origins of the village. Some field walking might also be done near to Court Knoll.

More detailed reports can be found on page 33 of the Community Times and our website [www.naylandconservation.org.uk](http://www.naylandconservation.org.uk).

Open Gardens are almost upon us once again (Sunday 9<sup>th</sup> June) and if anyone would like their garden included on the list, there is still time. Please contact Jill Badman or Andora Carver. It is easy to put up a "late garden open notice" on the day.

In view of the success of the Nayland Test Pit Dig, we are pleased to announce that since the meeting on April 29<sup>th</sup>, plans have been made with Carenza Lewis for a second Dig to take place in early September 2014 and the Committee have agreed that the proceeds of Open Gardens this year and possibly next year too, will go towards the £7,-8,000 required to finance a project involving 15 pits.

Mike Hunter and Martin Wright led the May Bank holiday footpath walk which this year started from the Village Hall and took a circular route to Stoke via the Rowley Wood. Next year a more extended walk at Wiston is planned.

John Rix will speak about Farming in the Stour Valley at our next Open Meeting on 24<sup>th</sup> June. This is a very topical and interesting subject and everyone is most welcome to come. 7.40pm for 8pm in the Village Hall.



## NAYLAND OVER 60S LUNCHEON CLUB

A Monthly Lunch for Senior Citizens ~ Church Hall ~ 12.00 noon for 12.30pm ~ £3  
Olga Alexander on 263923



The next luncheons will be on Thursdays; 30<sup>th</sup> May and 13<sup>th</sup> June in the Church Hall and on 11<sup>th</sup> July the Summer Tea Party will be held at Longwood Barn - make a note of the dates in your diaries and come along and join the friendly atmosphere for a chat with friends, old and new. There is no lunch in August.

If you would like to join us for lunch just come along. If transport down to the Church Hall is difficult telephone Olga Alexander on 263923 to see if we can collect you.

## BOWLS CLUB

Secretary: Eva Rolfe 263151



The last time you read my report you may remember we had three away games and one home game left. The first away game against East Bergholt, who have a terrible floor, was a minor disaster and we only managed to score 3 of the 10 points. The following Monday we went to Brantham this was a slightly better result, we managed to share the games and we managed to just get the shot advantage giving us a 6-4 win. We really needed to take this form to Bramford. Two weeks later when we did go to Bramford our luck deserted us, the first two games we lost one only by one shot and the other by five shots the second session one team lost by eight shots and the other won by eight shots, so with only six shots between us we only managed to score two points. With only the home game left things did not look hopeful. By the time Burstall came to us on April 3<sup>rd</sup>, the whole club had worked out that we needed to score 8 of the 10 points to secure promotion. At the end of the first two games one team lost by five shots and the other won by five shots so we could not afford a second loss. The second session started in Nayland's favour with both teams winning the first two ends, one team never lost control of their game winning 18-4, the other team had a much closer game but kept their nerve and won 12-9. So after a tough season we finally achieved the result that we had fought hard for all winter, and are promoted to the first division.

Thanks to all the players who gave up some of their other leisure pursuits to enable us to field a full team most of the time, against all the odds and all the illness we managed to secure our goal. For the summer league we aim to give our newer bowlers as much match experience as possible so we have a wider net to draw from in the winter.

### Fixtures

June: 5<sup>th</sup> Polstead home, 10<sup>th</sup> Burstall away, 12<sup>th</sup> Stratford St Mary home, 19<sup>th</sup> Tithe Barn home, 26<sup>th</sup> Hadleigh home.  
July: 18<sup>th</sup> Stratford St Mary home, 24<sup>th</sup> July Tithe Barn away.

*Sylvia Bond*





## THE VILLAGE LUNCH

Jo Murrison 262369

The Village Lunch held on Wednesday 17th April was attended by 72 people and raised £475 for Village Hall funds. The speaker was Ray Burman who gave a most interesting and amusing talk entitled "Dixon of Dock Green to The Bill". His police career over 30 years started 'on the beat' progressing to detective, Protection Officer and finally retiring as Chief Superintendant at the Metropolitan Police. Since retirement Ray has been an active Rotarian and in 2011/12 was President of Rotary International, the fee for his talk being donated to this charity.

Our next village lunch will be held on **Wednesday 30th October** when local historian Patrick Denney will be talking on **'To Fetch a Pail of Water'**. The lunch will be held in the Village Hall, 11.45 am for 12 noon, with lunch at 1pm. Tickets, priced £10, will be available from 30th September to 26th October unless previously sold at Nayland Post Office (afternoons only). Tickets are limited.



## NAYLAND FUNDRAISING COMMITTEE

Secretary: Jill Badman 262994

We are delighted to announce that our coffee morning held on 27<sup>th</sup> April in the Church Hall raised the magnificent sum of £500, which has been sent to The Shelley Centre for Therapeutic Riding (Riding for the Disabled). A very big 'Thank You' to everyone who helped, donated cakes, plants, raffle prizes and gifts and especially to those of you who came along on the day and supported us in aid of this wonderful organisation.

Our next event is a **Cabaret Evening on Saturday 5<sup>th</sup> October at Littlegarth School**. There will be fantastic entertainment and a delicious meal and lots, lots more. The evening is to raise funds for the local Motor Neurone Disease Association and Ovarian Cancer support. Please tell your friends and make sure you keep the date free. Further details will be circulated shortly.



## VILLAGE PLAYERS

[www.villageplayers.co.uk](http://www.villageplayers.co.uk)

Chair: Gale Scott 01206 262061

Membership: Emma Wallis 01206 271366

As Gale, our chairman is on a well deserved holiday I've been asked to write this on behalf of the Village Players.

Our most recent production Noel Coward's 'Hay Fever' was seen by around 280 people over the 3 nights and at each performance there was a lovely atmosphere of genuine enjoyment in the hall. I particularly noticed that everyone seemed to be smiling – including myself! (Which is always a bonus for a director..)

Our lively AGM later in April was well attended and our next production is to be 'Murdered to Death' by Peter Gordon directed by Jim Bond. (5<sup>th</sup>, 6<sup>th</sup> and 7<sup>th</sup> December 2013) a very entertaining spoof of the classic 1930's murder mystery. (See page 9 for more details and audition dates).

The Village players meet in the Anchor Pub at 8pm on the first Thursday of every other month – anyone interested in finding out more about us would be very welcome. The next meeting will be Thursday 4<sup>th</sup> July.

**Mary Moriarty**

## Bettina's Tea Room, Nayland House - NOW OPEN

This is the newly opened tea room which was opened by James Finch and named by him after his mother Bettina. She used to insist on having her meals in this room where the team room is now located and so how appropriate. Emma the manager and all the staff at Nayland House invite all in the village to come and have tea or coffee to meet as a group in a quiet peaceful setting in the house and at the same time take the opportunity of chatting to some of residents. All refreshments are free.

Lets make an effort and welcome them into our community.

## Suffolk Historic Churches Trust

A Spring Field Day was arranged by the Suffolk Historic Churches Trust on Saturday 11<sup>th</sup> May. About 25 people from far and wide met in the morning at The Priory, by kind permission of the Englehearts.

On the visit to four churches they were accompanied by Roy Tricker who gave an entertaining view on each church. First was Polstead church, where the visitors were shown the astonishing Norman arch which is totally hidden by the tower built over it in the Middle Ages. Then onto Shelley church, and after a picnic lunch back at The Priory, to Nayland church and finally to Wiston church, where tea was served.

An very interesting day was had by all.

**Nicola Thorogood**



## NAYLAND CINEMA

Chris Thompson Secretary V.H.M.C.

The new James Bond "Skyfall" was very much enjoyed by our audience.

Our next film on **Friday 28<sup>th</sup> June** will be "**Argo**". This film has been well reviewed as an edge of the seat thriller. It is set in Iran at the time of the Iranian hostage crisis. Six diplomats escape to the Canadian embassy. A plan for them to pretend to be a Canadian film crew is hatched in order to leave Iran but will the subterfuge be successful?

On **Friday 26<sup>th</sup> July** we will be showing the comedy-drama film **Quartet** starring Maggie Smith, Billy Connolly, Tom Courtenay, Pauline Collins and Michael Gambon and directed by Dustin Hoffman.

We have an interval for drinks and ice creams and an opportunity to chat to your neighbours. The bar is also open at 7.30pm before the films which start at **8pm**. Do join us for these events and help support your Village Hall. All profits go towards the upkeep of the Hall.



## OVER 60s CLUB

Secretary: Barbara Smith 501492

President: Eva Rolfe 263151

We are pleased to know Eva is making progress after her stay in hospital, we look forward to having her back with us soon.

Our meetings over the last few months have been very poorly attended, it is hoped that with the better weather this will improve. Our next meeting will be on 13 June at 2.30pm in the Church Hall. We are hoping to go for a meal at the Hare and Hounds on 18 July, members wishing to attend should be at our June meeting so that arrangements can be made.

New members are always welcome.

*Diana Whiting*



## Nayland Youth Club

Leader: Emma 07887 296409 naylandyouthclub@hotmail.co.uk  
Chair: Maria Mason 01206 263471 mrs.maria.mason@gmail.com.



Find us at the village hall each Tuesday 7pm to 9pm during term time. Regular activities include table tennis, swing-ball, table football and pool. There is also a rota of cooking and craft activities and competitions. As soon as the evenings become brighter we will once again be able to use the field to play football, rounders etc.

New members are always welcome.



## TRANSITION NAYLAND

[www.transitionnayland.co.uk](http://www.transitionnayland.co.uk)

Will Hitchcock T: 263169 M: 07768 435719 E: [info@transitionnayland.co.uk](mailto:info@transitionnayland.co.uk)

Transition Nayland's battery box in Nayland Post Office is very well used, and every month or so we take a full box of batteries to the tip for recycling. We wanted to make it easier for people to recycle batteries for two reasons: firstly, batteries contain heavy metals such as mercury and cadmium which are harmful to the environment and secondly, 95% of battery components can be recycled.

Without looking very far around me as I type, I can see many devices – remote controls, clocks, keyboards – which require batteries. (And that's before I've looked at the various gadgets and toys in the children's bedrooms!) So it's not surprising that in the UK we dispose of around 600,000,000 batteries each year – about 24 per household on average (the majority of which are not recycled).

Useful though it is, recycling batteries doesn't address the problem that producing batteries is a very wasteful process. The energy needed to make a battery is on average fifty times the amount of energy the battery delivers when you use it and that doesn't take account of the energy involved in packaging, storing and shipping it. (Imagine if you had to buy 50 gallons of fuel for every gallon you put in your tank!)

So – as well as continuing with the Post Office battery box – we would like to encourage people to use rechargeable batteries. Rechargeable batteries have significantly improved performance in recent years, and rechargers have become cheaper and faster to use.

Recharging batteries not only prevents toxic metals entering the waterways, it's also cheaper: the energy required to recharge four AAA batteries costs about 2p at average domestic rates, so they will quickly repay the higher purchase cost, and high-performance rechargeables can be recharged a thousand times before they need replacing. (The only thing you shouldn't use a rechargeable battery in is a smoke detector).

At the next Nayland Farmer's Market (8<sup>th</sup> June) Transition Nayland will have some rechargers and batteries on display with information about different battery types and best uses. Please visit us to find out more!





## NAYLAND PRIMARY SCHOOL : UKULELE ORCHESTRA

Jayne Kennedy

### Nayland School Ukulele Orchestra Perform at Snape Maltings

We were thrilled when the Ukulele Orchestra were selected to perform at the annual Celebration of Schools' Music at the prestigious Snape Maltings. This year's theme asked contributors to include references to Benjamin Britten whose centenary anniversary is this year.

The 'Ukes' of Nayland took the audience on a journey from a river's source to the sea incorporating many well known river related songs including a snippet of the Young Person's Guide to the Orchestra as a 'nod' to Britten on the way. The children sang in rounds, as soloists and in parts all of course accompanied by ukuleles. The 22-strong orchestra spent the afternoon rehearsing hard and, along with six other Suffolk schools, learned a new, complex piece of Britten's songs for the finale.

Performing at Snape Maltings, with its huge intimidating stage, whilst a privilege was nevertheless quite daunting; however the 'Ukes' did themselves and the school very proud by their performance. Many thanks to Mrs Leahy for her expertise and hard work in helping to run the after school Ukulele Club.

### International Soul Singer at Nayland

Following the exciting performance at London's O2 in January Nayland School Children Choir and Nayland Youth Choir were keen to invite Randolph Matthews to Nayland School. Randolph is soul singer with an international reputation and so it was a long shot that he would be able to come to Nayland. Imagine the excitement and surprise the children had when Randolph turned up to spend the day in school!! Each class had time with Randolph learning how to experiment with their voices, beat-boxing and soul singing. At the end of the day the whole school came together to celebrate their learning.

The children have continued to use the elements Randolph shared with us, for example the Year 5 class recently included beat-boxing in their group compositions. To listen to Randolph and find out more go to [www.randolphmatthews.net](http://www.randolphmatthews.net)



## NAYLAND PRIMARY SCHOOL: ECO TEAM

Michaela Woollatt

We have had a very exciting term!

First gaining the Green Flag in January and then in March being awarded the prestigious "Greenest School in Suffolk" award. Mrs Symons and Emma went to Bury St Edmunds and attended the award ceremony at the Apex but they really weren't expecting to have won! It was a surprise but when we think about all the eco work and learning we have done over the last few years, we did deserve it. The rather special glass award is in our front entrance, near to our Eco wall where we tell everyone how to be green.

We have now started to think about saving water in our school. Also litter picks are happening regularly as we can eat our lunches outdoors.

The after school Nature Club will meet again after half term for the Year 2 children to enjoy our learning spaces outside. The pond area is looking good- plants are growing, the pond is filling with little creatures and we will be watching out for butterflies and birds visiting. We hope to plant more things later.

The whole school are going to be involved in our Gardening week, starting May 20<sup>th</sup>. Every class will be outside, tidying up, collecting litter and planting new flowers into our newly bought tubs. We are really looking forward to spending time in the reading garden, outside the library, as we have bought very eco friendly chairs and benches to sit on. We have our fingers crossed that the sun will arrive for us to enjoy the last months of this school year!

**Karon Symons**



## Woodland Corner

Administrator: Caroline Keep 263054  
e-mail: [enquiries\\_wc1@btconnect.com](mailto:enquiries_wc1@btconnect.com)

Playgroup Leader: Sue Clarke 263054  
<http://woodlandcornernayland.blogspot.com>

Registered Charity  
No. 1035330

### ACTIVITIES THIS TERM

#### After School Club

The After School children have seized on the recent good weather with huge enthusiasm spending lovely afternoons outside playing every conceivable sport! We have also been tapping into our creative skills with junk modelling sculptures that would make the Tate Modern envious. This term we will be reviewing our tea menus in consultation with the children.

#### Playgroup

This term we are exploring the wonderful world of Minibeasts. We will be learning through singing, book sharing and storytelling, as well as observing, in order to find out about Insects and their habitats. We will be investigating through first-hand experiences in our beautiful natural environment and by using resources such as, books, the Internet and visits from Insect experts. We will be also be learning to move like insects through music, movement, dance and instruments. The children will be taking part in some wonderful, colourful craft activities too.

#### HOLIDAY CLUBS

Our Easter Holiday Club was a great success, please see advert elsewhere in the Community Times for more details of our summer holiday club which will be running on 29<sup>th</sup> July – 2<sup>nd</sup> August and 27<sup>th</sup> – 30<sup>th</sup> August.



## NAYLAND MOTHER & TODDLER GROUP

Leader: Liz Huggins 263438

Nayland Mother and Toddler Group meet every Friday in term time at Nayland Village Hall from 9:45 till 11:45. Its a friendly group with lots of toys for your little ones to enjoy. Tea and coffee is available to mums, dads and carers and juice and biscuits for the children. It is a great place for new mums to meet people and make friends! First visit to us is free! Then its £2.50 per mother and child(ren). Look forward to seeing you there!

There will be **no** Toddler Group on 31st May (Half Term Week)

The last Toddler group of term will be 19th July to return on the 6th September after the Summer Holidays.



## 1<sup>st</sup> NAYLAND SCOUTS

Scout Leader: Malcolm Macbeth 01473 827239

Over the May Day bank holiday weekend three Nayland Scouts and I joined 320 Scouts and Cubs, plus leaders and helpers, from groups in the Sudbury district at a camp in Boxford to celebrate 100 years of Scouting in the district. We pitched our tents on Friday evening, in a sub-camp with Boxford and Leavenheath.

On Saturday after breakfast and flag break each sub-camp split into smaller groups for activities in the camp field and spinney. We began with BMX biking for 45 minutes and then moved on to pioneering, lashing wood poles together with ropes to make an A frame. Then it was 45 minutes of orienteering, finding hidden sheets of paper in the wood and working out the anagrams on them. The final activity that morning was the traverse wall – climbing round a room using climbing hand and foot holds.

After lunch the group headed to the air rifle shooting and an assault course before taking on the challenge of the cannon race. A cannon was pulled to a marked area, dismantled, carried in pieces around an obstacle course and then rebuilt. The day's activities concluded with 45 minutes of canoeing. We had a cooked meal and the sub-camps gathered together for a campfire sing along.

After Sunday flag break we began with games on the camp field followed by crafts in the marquee and time on the bouncy castle. In the afternoon we were in the spinney for a muddy and wet time on the waterslide – those who dared to go on it!! Then it was the aerial runway, grass sledging, archery and cooking on a wood fire before the final activity, the tug of war. (We did not have time for tree climbing, abseiling, the cave simulator or body zorbing which were also on offer.) After our meal we had a sub group game in the wood.

We took our tents down after flag break on Monday and were home by about 11 o'clock. It was a very good camp.

Unfortunately, on returning to our Scout hut after the break we discovered it had been broken into. A window had been pulled out and the door handle broken off. An indoor football had gone missing.

The 1<sup>st</sup> Nayland scout group is still in need of a treasurer to keep our small amount of funds in order.

Please contact Malcolm Macbeth 01473 827239

Scouts meet at the scout hut on Thursday evenings at 7-9pm (10.5 – 14 yr olds)

I have some rolls of good condition second hand wire netting available for a donation to 1st Nayland scout group. Suitable for use in gardens/allotments, they are approx. 20 feet long and 3 or 4 feet wide.



## NAYLAND PRIMARY SCHOOL : YEAR FIVE, THE KESTRELS

*Kathi Brandon, Year 5 Teacher*

The Kestrels are learning about the Tudors and the way they lived including the clothes they wore, what they ate, and even the type of music they played and the dances they liked. We actually made up some of our own dances and practiced our writing skills by writing out instructions for them. You can see us performing our dances at the Nayland Primary School Fete on Saturday 15<sup>th</sup> June – we will be accompanied by some of the Kestrels who will be playing Tudor music on their instruments. Don't miss it! As part of our project we also found out information about the Kings and Queens in Tudor times including Henry VIII, Queen Elizabeth I, King Edward VI and many more. We painted their pictures and even tried to find a new wife for Henry VIII by writing an advert – we decided this was quite hard as he had already divorced four wives and beheaded two others!

The Kestrels are also half way through doing a 500 word project which challenges us to write a story with 500 words or under. We are trying to make our stories exciting and dramatic by using tons of description because we are holding a competition and the best stories will be awarded 1<sup>st</sup>, 2<sup>nd</sup> and 3<sup>rd</sup> prize. We are working very hard to try, and impress our mystery judge.

Finally we have been analysing data using pizzas in our maths by planning to make pizzas to sell to the school to raise money for Kiva. Kiva is a charity where you lend money to people in developing countries who want to start a business. When their business is up and running they repay you and when you get the money back you can either keep it or lend it to another person. We went around the school in groups and asked all of the classes (even the teachers) what their favourite pizza was. There was the choice of margarita (cheese and tomato), Hawaiian (pineapple and ham) and loads more. We have not sold or made the pizzas yet so we are looking forward to that. We have also researched on supermarket websites the prices of the ingredients to find the cheapest price.





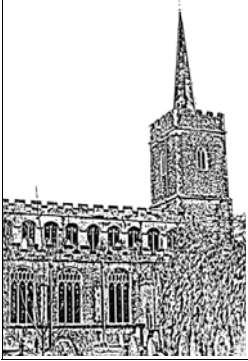
## NAYLAND ART GROUP

Daphne Berry 262641

At the next meetings of the Art Group we hope to schedule a visit, organised by Daphne, to Christchurch Mansions in Ipswich to view their collection of Constable paintings, using the local authority's Community Transport facility.

We are also looking forward to another visit from one of our regular tutors, Keith Whitlock, always a source of new ideas, methods and types of painting to challenge us all.

**Colin Ramsell**



## THE FRIENDS OF ST. JAMES' CHURCH, NAYLAND

Registered Charity Number 1052641

Chairman: Alan Edwards 262800

Jeanette Finch, Vivien Turnbull, Peter and Anna Mann and Lorraine Brooks have produced a book featuring the Kneelers which have been crafted in the last 16 years by so many volunteers. The spiral bound book has full colour pictures of all the Kneelers, each accredited to the person who made it, and is a beautiful record for the future.

If you would like your own copy, please phone Alan on 262800, who can supply one for £12.50. If you would like to see a copy first, there is, of course, one in St. James'.

The JAMBoree will be on 19th October. We would very much appreciate donations of sugar (if you can't make JAM!) and clean, lidded, small, jars. Please leave them at the back of 15 Birch Street.



## NAYLAND FIRE STATION

Watch Commander Tony Gardner, Suffolk Fire and Rescue Service, Fire Station, Bear Street, Nayland

The fire crew at Nayland continue to provide fire cover for the local community and also to support colleagues at large incidents across the County. This year has seen, a fire in a light fitting in Boxford, a chimney fire in Assington, a thatched roof fire in Nedging Tye, a chimney in a thatched property in Leavenheath, a road traffic collision in Kersey, a domestic fire alarm in Polstead and a thatched roof fire in Rattlesden.

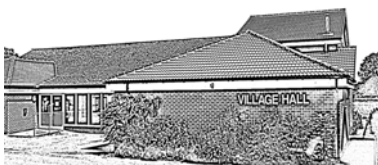
More recently Nayland attended a Bungalow Fire in Leavenheath, when the crew arrived the roof was well alight. Breathing apparatus was quickly donned, so two crew members could enter the building and fight the fire from inside. Outside a hose was used to fight the Fire. When other crews arrived one of the officers in charge congratulated them on what a good job they had done in stopping the Fire.

Unfortunately there are times where the fire engine has not been available because there are not enough people who are able to leave their place of work or home during the day time to be part of the crew. Nayland currently have vacancies for firefighters and the crew would appreciate you taking the time to think about whether this is something that you would like to find out more about.

The role of an on call firefighter is rewarding and varied - you work as part of a close-knit and highly trained team providing a vital service to your community.

You are welcome to drop into the fire station in Bear Street on a Thursday evening between 1900 and 2100 during the weekly training session, to observe and ask questions. We will be holding an open event on 20th June - watch local noticeboards for details. Alternatively information can be found on the Suffolk Fire and Rescue Service section of the Suffolk County Council website following the links for on call recruitment.

Please consider whether you can directly serve your community in this way. We look forward to hearing from you.



## VILLAGE HALL MANAGEMENT COMMITTEE

Registered Charity No 304 928

Chairman: Iain Wright 263646

Secretary: Christine Thompson 262825

### APRIL COMMITTEE MEETING

At the April meeting, the Bookings Secretary reported that the Farmers Markets have been a great success. The Treasurer presented a Housekeeping Book in which defects found in the Hall can be reported. There will be quarterly inspections of the Hall. These are part of the Village Hall Action Plan.

Those villagers who helped with the garden clear up were thanked. The chairman is completing a survey of the Hall doors, some of which will soon need replacing. Mike Hunter presented the index for the new Hall Manual to which some more categories were added. It was decided to create the new position of Vice Chairman to which Mike Hunter was unanimously elected.

### MAY COMMITTEE MEETING

At the May meeting it was with great regret that the VPMC accepted the resignation letter from Andrew Gowen, the Treasurer. His resignation will take effect at the end of the year and we will be seeking a replacement. Andrew was thanked for all that he does for the Hall and its users.

The first quarterly inspection of the Hall will be carried out this month. Some minor repairs will also be carried out.

# Garden Notes

by The Old Muckspreader



Cyclamen Hederifolium



Eryngium Giganteum



Lathyrus Vernus

It is now more or less time to review the damage caused by a) marauding wildlife and b) the severe winter.

a) Several quite large holly bushes appear to have been killed from loss of bark, and two small apple trees are also dead, but our big Newton Wonder is covered with blossom. The OM/S recommends those readers with gardens that are small enough to wire to ensure that their defences are intact, at least against rabbit.

b) Weather damage has been quite severe here, and two large Clematises, theoretically hardy, are dead, while an old Bay is badly scorched on its North side. Several smaller shrubs which appeared dead are showing signs of life by shooting from their bases. The standard advice here is not to give up hope until the end of June.

Muckspreader Hall ceased to be a working farm in the 1950s, so our grassland, comprising a small paddock, orchard, and a few odd patches here and there escaped the wholesale spraying of weedkiller which came into fashion soon after. As a result we have quite a decent showing of wildflowers, and this year the cowslips and primroses are outstanding; they also appear in borders whence they can be dug up and given away or sold at the Church Fete Plant Stall.

This leads on to the subject of those plants that self-seed. Those gardeners who want a super-tidy garden need not read any further, but those of us who don't can benefit enormously from a large range of plants.

The following are a selection:

- Most of the Poppy family, especially Meconopsis Cambrica, the Welsh Poppy: if needing to be moved seedlings should be moved when small, as they develop a tap root.
- Most of the hardy Geraniums, which will hybridise with each other, as well as coming true.
- Hellebores, which seed prolifically immediately round the base of the parent.
- Centranthus Ruber; Valerian
- Eryngium Giganteum (Miss Willmott's Ghost)
- Lunaria Annuua; Honesty
- Most Campanulas, especially C. Persicifolia
- Most of the small spring bulbs such as Scillas, Chionodoxas, Eranthus (Winter Aconite), Fritillaria Meleagris
- Cyclamen Hederifolium
- Most of the Corydalis family but unfortunately not the beautiful blue species.
- Finally, one of the OM/S' favourites, Lathyrus Vernus, the Spring Pea. In flower now, it dies down in Summer, to reappear next Spring.

There's nothing like free plants.

## WORDSEARCH: Self-seeding Flowering Plants

## ANAGRAMS: Annual Flowers

N	E	M	A	L	C	Y	C	S	V	I	Z	B	M	B	A
I	D	P	E	O	L	W	I	A	O	A	E	U	A	A	I
S	C	R	S	C	R	T	B	A	L	N	M	D	I	U	G
I	V	M	E	R	O	B	E	L	L	E	H	C	K	O	E
S	O	A	U	S	O	N	L	W	H	B	N	V	N	T	L
S	A	I	O	I	B	A	O	T	A	R	H	D	A	C	I
B	U	Y	I	L	N	R	N	P	U	E	E	Z	U	A	U
A	M	H	S	A	E	A	B	A	S	V	L	A	T	L	Q
U	Z	E	I	D	S	W	R	V	O	I	W	B	I	U	A
O	A	L	S	Y	W	O	V	E	R	E	S	R	A	M	E
T	B	W	R	R	Q	S	D	I	G	I	T	A	L	I	S
O	R	H	E	O	U	J	A	J	G	L	W	E	E	R	A
R	C	A	L	C	H	E	M	I	L	L	A	S	N	P	I

1 AWTESEPE 2 words

2 NIPFACNOPROIPLAY  
2 words

3 LEWNOSRUF

4 PRKALRUS

5 LIGLANE

6 NOWOFCRLE

7 NUHISDTA

8 OBASISUC

9 TAGIODE

10 PSOCOIRSE

The words may be horizontal, vertical, or diagonal and forward or backwards

**Solutions on page 37**

ALCHEMILLA  
AQUILEGIA  
CALENDULA  
CHRYSANthemUM  
CORYDALIS

COSMOS  
CYCLAMEN  
DIGITALIS  
GERANIUM  
HELLEBORE

KNAUTIA  
MECONOPSIS  
MYOSOTIS  
PRIMULA  
VERBENA



## Mrs Violet Walsh

One of Nayland's most important houses is about to have a new owner. Renamed The Bear in 1977 and later Bear House, many people still call it by its earlier name, Stourbank. This imposing house in Bear Street has been occupied by many families since it was built in the fifteenth century and it was just over one century ago, in March 1912, that Captain Bernard Walsh and his wife Violet took up residence at Stourbank following their marriage in London that year.

Captain Walsh was born in 1863 in Surrey. He was a retired Major of the Oxford and Bucks Light Infantry and married Violet Jennie Pearson who came from a prominent Suffolk family. Some years after their arrival in Nayland, in the August 1923 edition of the Nayland Parish Magazine, the Reverend Marsh offered hearty congratulations to Captain and Mrs Walsh on the birth of their son and heir, Bernard David James Walsh.

From the moment they arrived Captain and Mrs Walsh became involved with the community.

They soon became well known and respected for their interest in the village and for their generous support of many of its activities. They held many fetes, sales and other functions at Stourbank in aid of the Church, the old people and schoolchildren and, during the 1914-18 war, for the Suffolk Prisoners of War Help Fund. An old poster survives announcing that a Grand Fete in aid of the Suffolk POW Fund would be held on 7<sup>th</sup> September 1917 in Stourbank Gardens and Mr Norfolk's Meadow and the band of 6<sup>th</sup> Battalion Durham Light Infantry would be playing.

Both Captain and Mrs Walsh were on the committee of the Nayland and Stoke District Nursing Association which operated in the 1920s. They always responded willingly to appeals for funds for many various causes, including the erection of the War Memorial, for which Mrs Walsh acted as Treasurer. Over 3 years £259 19s 11d was collected for the village and church memorials and the High Street memorial was unveiled in 1921. Their ongoing generosity was acknowledged in the Parish magazine of March 1924 when the vicar wrote: "Captain and Mrs Walsh are always to the front in every good work and their benevolence has left marks in Nayland that cannot be effaced."

After the death of her husband in 1928 Mrs Walsh continued to take a lively and practical interest in the people of Nayland. For very many years, until incapacitated by ill-health, she provided hot soup every week for the old and poor people of the village, for whom she always bore a special affection.

She was founder and President of the Nayland Old Timers' Club, arranging many functions and outings for the pensioners. She remembered them in her will, bequeathing a sum of money to the Parish Council which they were required to invest and to pay the income therefrom in December each year to certain elderly of the parish as the Council thought fit. This gift was to be known as The Walsh Trust and has duly been paid by the Trustees every year since 1973.

Mrs Walsh was active too in support of both the Church and Congregational Chapel and held garden fetes at Stourbank in support of them. Captain Walsh had been a Parish Councillor in Nayland before his death and in 1942 Mrs Walsh succeeded the Reverend Cliff as a member of the Melford Rural District Council, representing Nayland with Wiston. She served in that capacity until 1964 when, on her retirement, she presented the Chairman's chain of office to the Council.

During the 1939-45 war Mrs Walsh gave much valuable public service of all kinds on behalf of Nayland and Wiston. She was appointed Steward for the National Salvage Campaign, storing tons of waste paper at Stourbank, and also organising the Village Dump of iron and steel scrap for the war effort. She ran a canteen with several lady volunteer helpers upstairs in the then unoccupied mill in Mill Street for the troops stationed at Horkesley Park, where you could buy a cup of tea or coffee for 1d a cup and such delights as rabbit or sausage pie. She organised a Warship Week and the Nayland Spitfire Fund, and



played a prominent part in the Welcome Home Fund for returning Nayland servicemen. There seemed to be no limit to her generosity, as shown by a surviving letter to her in 1944 when she was even thanked "for her kindness in allowing the men of this Battery to have baths in your house".

Stourbank has always had a lovely garden and not surprisingly Captain Walsh had been a Vice President of the Horticultural Society. Mrs Walsh also took an interest in the village allotments, providing a cup to be awarded for the best allotment. In her will she left a further sum of money to the Parish Council to invest, stipulating that the income from this was to be used as a prize to be presented each year to the holder of the best kept allotment, together with the silver cup which the holder may keep for one year. Thanks to Mrs Walsh the Allotment Competition is an established annual event in the village.

Following the death of her husband, Mrs Walsh had the tower of St James' re-pointed and the church clock re-gilded in his memory in 1955 (see wall plaque in the south aisle). She continued to live at Stourbank until 1970 when ill health compelled her to enter a London nursing home where she died 40 years ago in May 1973. Today there are still several people in the village who personally remember Mrs Walsh in her later years for her generosity and many kindnesses to people in every section of the community. There is no doubt that she and her husband made an enormous contribution to the life of the village, the effects of which are still with us today, and they have both become an important part of the history of Stourbank and of Nayland.

**Wendy Sparrow, Parish Recorder**

*[With many thanks to Mrs Walsh's granddaughters for supplying much of the above information and also more about the history of Stourbank which will be the subject of a future article]*



# Calendar



*Kenny Norman and his home grown produce, Wendy Sparrow*



*Jubilee Party, Mike Almond*



*St James Church, Ian McKay*



*Sunset over Nayland Meadow, Margaret Amos*

The photographic competition to generate images for the 2014 Nayland with Wissington Calendar was held on 6th May. It was wonderful to see new interest in the competition; this year there were 93 beautiful images submitted by 21 photographers, making selection of just twelve scenes very difficult indeed.

The judge, Geoff Meadowcroft, felt the quality of entries improves each year and he was impressed by the marvellous variety of views and community activities that had been represented. He was particularly taken by an interesting composition of Anchor Bridge taken by 11 year old Oliver Hughes.

The photographs selected were submitted by Graham Wiles, Nicola Thorogood, Catherine Burbidge, Trevor Smy, Mike Hunter, Antony Day, David Negus, Lorraine Brooks and Hazel Gardiner.

A steady stream of visitors popped in to the view the display; those of you who did not will have to wait for the calendar to see the selected entries. However, shown here are a few of the delightful images submitted and on show at the exhibition. As hoped entries represented the different seasons with our range of weather conditions, and for the first time night scenes were included. Subjects ranged from village activities and events, such as the Jubilee Celebrations, Open Gardens, Scarecrow Competition, to parish landmarks, such as Wiston Mill and the Bear Street Telephone Kiosk. There were a variety of street scenes, views of the meandering river Stour, the countryside and farming views. There were also some interesting natural and architectural features including Anchor Bridge and a snowman at the Post Office.



*Cattle at Candy Land, David Negus*



*Village Players, Nick Moriarty*



# Competition

Another online digital photo album will be produced with this year's stunning competition entries and it will be available to view on [www.naylandandwiston.net](http://www.naylandandwiston.net), village calendar page.

The images selected for inclusion in the calendar will be matched up with interesting old images of the village and historic detail will be added by Wendy Sparrow. A limited edition of the village calendar will be on sale at the Flower Show in the Village Hall on 4th August – don't miss out!

View these images in the colour version of the Community Times at [www.naylandandwiston.net](http://www.naylandandwiston.net), Community Times page.



*Anchor Bridge, Oliver Hughes (aged 11)*



*Nayland Allotments, Julie Wooding*



*Snowman at the Post Office, Mary Battye*



*'A couple of relics found at the Test Pit Dig', Andrew Gowen*



*Swans on the Stour, Graham Wiles*



*Sunrise over the River Stour, Tony Frearson*



*View over Rushbanks, Frances Bates*



## VILLAGE PLAYERS' HAY FEVER

**COMEDY CLASSIC:** The Village Players' latest production, *Hay Fever* by Noel Coward, was a delight, providing audiences in Nayland village hall with an amusing and enjoyable evening.

Described as a "cross between high farce and a comedy of manners," the play was first staged in 1925 and focuses on four members of the eccentric Bliss family and their bizarre behaviour when they each invite a guest for the weekend to their country house.

Making her first appearance with the Players, Lucinda Bartlett dominated the stage, delivering a brilliant portrayal of a retired West End actress who enjoys turning everything into a melodrama. Justine Garnes and Samuel Pentney gave spirited performances as her offspring while Nick Moriarty was suitably tetchy as her author husband, coming into his own in the second act.

Lured into party games, the four guests were ably played by Emma Wallis as a glamorous society vamp, John McCarroll an uptight diplomat, Rebecca Ennion an innocent flapper and Chris Baalham a handsome hunk. Either ignored or passed round like objects by the Blisses, they rapidly became disenchanted with their weekend and left the house together, unnoticed by their so-called hosts. Jenny Smith completed the first-rate cast as the family's put-upon housekeeper.

Directed by Mary Moriarty, the play prompted ripples of laughter throughout, scoring another success for the group. Their next production will be *Murdered to Death* by Peter Gordon in December.





**WE ARE MACMILLAN. CANCER SUPPORT**

**BE PART OF THE WORLD'S BIGGEST COFFEE MORNING**

**Saturday 28th September**

Church Hall, Bear Street, Nayland

9.30 am - 12 noon

**Cake Stall**

If you can donate a cake please contact  
Jenny Smith on 262430

Every cup will help improve the lives of people affected by cancer

Macmillan Cancer Support, registered charity in England and Wales (261017) Scotland (SC039907) and the Isle of Man (604). MAC12413 March 2009

*Zoë Brown*

**Picture Framing**

**01206 271 722**  
**07815 571839**

*Complete in House  
Picture Framing Service  
Artwork, Medals, Cross Stitch, Photos  
Engravings, & Much More*

Dairy Farm  
Little Horkesley  
Colchester CO6 4DP



## NAYLAND TEST PIT DIG

Detailed results of a community archaeological project were revealed at a well-attended meeting in Nayland village hall on April 29.

The test pit excavations took place over three days in October and were organised by Dr Carenza Lewis of Access Cambridge Archaeology.

Nayland was one of six locations selected for digs in the area and metre-square pits were dug in 33 gardens and open spaces all over the village from Bear Street to the Anchor Bridge. Dr Lewis said there was a limit to what could be done in three days but a huge amount was achieved and the finds were all taken back to the university to process.

Focusing on pottery, she gave full details of the hundreds of objects found at all the digs, showing maps of each site with analysis of the fragments. Many dated back to early medieval times and there were also Roman and late Anglo-Saxon traces but no pre-historic pottery. Other finds included several coins, two possibly-forged Elizabethan pennies at Bear House, and a range of bottles and medications unearthed at a site in Court Street.

Dr Lewis said the finds were far more than expected and it was possible to see where the core of the village was founded. Overall the project had generated huge enthusiasm



*Dr Carenza Lewis informing the meeting in the Village Hall*

and justified all the hard work.

"People felt very engaged working as a team and turned it into a real community event," she added. She thanked Andora Carver, secretary of Nayland with Wissington Conservation Society, who had approached her at a similar event in Bures last year and suggested a dig at Nayland.

The project was part of the lottery-funded Managing a Masterpiece programme designed to engage the public in the heritage of the Stour Valley.

## THE GUILD AT WILSON MARRIAGE CENTRE

Come and join the Guild on a Friday morning from 10.30am to 12 noon at the Wilson Marriage Adult Education Centre in Colchester.

There is a weekly talk on every possible subject, a free car park and coffee with biscuits.

You would be most welcome and the company is convivial. Hope to see you there.

**Yvonne Swane**

*To join, contact membership secretary Marion Cumming on 01206 330019.*



## PARISH ASSEMBLY

Parish Council Chairman, Gerry Battye, welcomed about 30 members of the public to the meeting in the Village Hall and introduced the guest speaker, Jonathan Free, Head of Communities at Babergh District Council. *Report on the meeting on page 8.*

## ST JAMES' CHURCH MEETING

**Meeting of Parishioners and Annual Parochial Church Meeting on 9 April 2013**

St James' Nayland Meeting of Parishioners and the Annual Parochial Church Meeting were held in the church from 7.30 p.m. on Tuesday 9 April, attended by members of the PCC and a small number of parishioners. Revd Adrian Mason chaired the meetings. Kathy Hunt and James Carver were re-elected as churchwardens and John Baker re-elected as Lay Chair of the Council and deputy churchwarden. Existing PCC members wishing to continue on the Council were re-elected unopposed; Mr R Evans and Mr J Branfield stood down. Lists of all appointments will be posted on the church notice board in due course. The new Electoral Roll stands at 70 names.

The PCC annual report was presented by Revd Mason alongside reports covering many aspects of church business and activity. James Carver (Treasurer) drew attention to the

continuing pressures on the parish to meet its Parish Share target. Alex Murrison (Chair, Fabric Committee) reported on the essential maintenance work completed during the year and outlined a major refurbishment project for the church building scheduled for 2014 and with support from the Friends of St James (Chair, Alan Edwards). Andora Carver reported on behalf of the Nayland Fete Committee and was pleased to announce that the 2012 event had raised £10,951.43, the third highest surplus ever raised and a tribute to the hard work of the committee and the strength of support from the local community. Other reports identified the contributions made by the church bellringers, the church choir and visiting musicians, church cleaners, members of the flower rota, those who manage the church hall, and to all the volunteers who make up the Churchyard Working Party.

Revd Mason recorded his thanks for the continuing work of the Council, members of the congregation and of the local community in their support for the church and its ministry.

## Feedback from James Finch - Your Stour Valley County Councillor

It was good to meet so many of you during this last election campaign. May I thank many of you for voting for me to be your Suffolk Councillor. For those who could not quite bring themselves to, may I remind you that I am very eager to represent you and your views as well.

My main means of feedback to and from you has been via your parish councils and this will continue to be so. In fact I encourage all of you to share your views via them as I do have regular contact with them. However during the election I met many of you who do not use this route but do still have important views for me to address on your behalf which sometimes do go unnoticed and not acted upon for far too long.

To solve this, I am considering some additional opportunities for us to meet and be in contact:-

- Having some local clinics in your village at times convenient to you (and me!) – probably on Saturday mornings - the venues and times of which will be published in this magazine.
- To have a regular column in this your local parish news / magazine to keep you updated on council activity.

I would appreciate **your** feedback to me on these ideas none of which will replace my availability to you by telephone or email or via the web.

I will continue to pursue vigorously on your behalf the priorities of the Stour Valley which include freezing your council taxes, faster rural broadband, the new travel card for young people (similar to the "Oyster Card" run by London transport), the "dreaded potholes", highway maintenance, traffic speed in our rural lanes and the protection of our mediaeval villages in our AONB and beyond.

I look forward to working with you all over the next four years and thank you again for your support and encouragement.

**James Finch - Suffolk County Councillor -  
Stour Valley Division**

*Assington, Boxford, Bures St Mary, Edwardstone,  
Groton, Leavenheath, Lindsey, Little Cornard, Milden,  
Nayland with Wissington, Newton, and Stoke by Nayland  
Tel 01206 263649 Mobile 07545 423796*

### OPEN FARM SUNDAY - 9<sup>th</sup> JUNE

**Lower Dairy Farm, Water Lane, Lt Horkesley CO6 4JS  
9<sup>th</sup> June. 11am – 4pm. Free entry.**

Farms across the country are opening their gates to the public for LEAF's Open Farm Sunday.

The Taylor family of Lower Dairy Farm, Nayland, are inviting you to come and discover life on their farm. Explore the farm on a self-guided walk with views across the Stour Valley. Along the way learn more about the crops, animals, and history of this very special area. Then join us in the barn and treat yourself to a slice of homemade cake! For more information visit [www.lowerdairyfarm.co.uk](http://www.lowerdairyfarm.co.uk)

### artists around SUDBURY



**Local artist Anna Boon**

**will be opening her Nayland studio to visitors on**

**Saturday 22nd and Sunday 23rd June,**

**11.00 to 4.00**

**18 Heycroft Way**

*Mixed media paintings and sculpture on show*

*A great chance to discuss techniques and find out what inspires her.*

*Eight other Artists Around Sudbury are also opening their studios this weekend so why not make a day of it?*

*Find out more at [www.suffolkopenstudios.org/artist-trails](http://www.suffolkopenstudios.org/artist-trails)*



Welcome to this month's Police news item.

#### **What to do if you hear emergency sirens whilst driving**

You should look and listen for ambulances, fire engines, police or other emergency vehicles using flashing blue, red or green lights, headlights. Remember loud music in vehicles may prevent you from hearing emergency service vehicles approaching you.

When an emergency vehicle approaches, do not panic. Try to consider the route of the emergency vehicle and take appropriate action to let it pass. If necessary, pull to the side of the road and stop, but do not endanger other road users. Do not pull over or slow down on a bend. Think about logical overtaking spaces. If you would not think of overtaking, we won't either! Always indicate your intentions to the driver of the emergency service vehicle.

Finally, make your movements definite. In an ideal world, we would like to see drivers pull over to the side of the road and stop when safe to do so. Remember if one emergency vehicle passes you, more vehicles maybe following immediately behind. Fire engines may be en-route to a road traffic crash so prepare yourself in case you are approaching the incident.

When passing the scene of an accident do not be distracted or slow down unnecessarily (for example if an accident is on the other side of a dual carriageway). This may cause another accident if you slow down to look. Although firefighters and other emergency services need to get to an incident quickly, getting there safely is most important to us all.

#### **Lost Property...**

Whilst the station operates limited opening hours, we do still receive a large number of lost and found property. Officers also find the odd item whilst on patrol, not to mention the many pedal cycles that are abandoned or miss placed.

If you lose something please do consider us as you may be pleasantly surprised as to what is handed in. Currently we have a quantity of jewellery with an animal theme that was found in Whatfield, two fairly new expensive mobile phones, a pricey alarm car key fob for a high-end vehicle, and other jewellery.

Much of what we have is easily identifiable so we can reunite the item with the owner when they come forward. Remember, after 30 days the finder can lay claim to the item. If the finder does not want the item, all police found property is then listed for auction at [www.bumblebeeauctions.co.uk](http://www.bumblebeeauctions.co.uk). This site is definitely worth a look and will list all property listed by Police Services all over the Country.

#### **'TWITTER' & Facebook**

As from the 20<sup>th</sup> May Babergh Safer Neighbourhood Teams, will be up and running with a 'Twitter account', so if you would like up to date information as to what is going on within the Babergh area follow us @BaberghPolice.

We are on Facebook, at Suffolk Constabulary.

**Mandy, PCSO 3108 Coleman  
Babergh East SNT**

**Tel: 101, Email: [babergh-east.snt@suffolk.pnn.police.uk](mailto:babergh-east.snt@suffolk.pnn.police.uk)**



# The 2013 Taste of Sudbury FOOD & DRINK FESTIVAL

Promoting Local Produce & Local Restaurants

FRUIT & VEG • CHEESES  
ICE CREAMS • SPIRITS  
CHAMPAGNE • BEERS  
JUICES • BAKERY  
MEATS & FISH  
COOKERY DEMOS  
& LOTS MORE!

Market Hill & St Peters Church, Sudbury  
Starts from 12 noon - Sunday 23rd June  
FREE ENTRY

info@tasteofsudbury.co.uk  
www.tasteofsudbury.co.uk

Contact Jane Hatton  
01787 468634



**ANCHOR INN**  
NAYLAND

Welcome to The Anchor, our idyllic riverside inn  
serving traditional hearty pub food...



NEW PUB CLASSICS MENU NOW AVAILABLE



**SPRING BEER FESTIVAL**

SATURDAY 15TH & SUNDAY 16TH JUNE

Selection of cask ales   Live bands  
Hog Roast   Family fun

The Anchor Inn, 26 Court Street, Nayland, CO6 4JL  
www.anchorinnayland.co.uk | 01206 262313

## Tiny Tables & Chairs



- \* Create a stylish look for your next party by hiring range of good quality kid's party tables and chairs
- \* Suitable for all ages up to 8 years
- \* Sturdy tables seat up to 10 children each
- \* Chairs supplied in a variety of bright colours
- \* Acrylic Drinks dispensers and drink stands also available for hire

**Contact Santel on 07894 069 765**

Ashlaburn, Coach Road, Great Horkesley CO6 4AS  
info@tinytablesandchairs.co.uk  
www.tinytablesandchairs.co.uk



*Dovecote Flowers*

Dovecote Flowers is delighted  
to offer a local florist service:

*Floral Bouquets & Baskets*

*Flowers for the weekend*

*Funeral Tributes*

*Planted Arrangements & pot plants*

*Freelance & Contract work*



Contact Alice Owen  
to discuss your requirements  
07798 907552



## CHURCH SERVICES: JUNE & JULY 2013

Nayland, Wiston, Leavenheath, Stoke by Nayland & Polstead

Date	Time	Venue	Service	Priest / Leader	Time	Venue	Service	Priest / Leader
26 <sup>th</sup> May <i>Trinity Sunday</i>	8.00am	Nayland	HC 2	Revd John Fowler	11.00am	Polstead	HC 1	Revd Jackie Sephton
	9.30am	Leavenheath	HC 1	Revd Jackie Sephton	11.00am	Stoke	HC 2	Revd John Fowler
	9.30am	Nayland	MP		6.30pm	Wiston	Evensong	Miss Kathy Hunt
2 <sup>nd</sup> June <i>Trinity 1</i>	8.00am	Stoke	HC 2	Revd John Fowler	11.00am	Polstead	MW	Jim Sephton
	9.30am	Nayland	HC 1	Revd John Fowler	11.00am	Wiston	HC	Revd John Fowler
	10.00am	Leavenheath	First Sunday	Revd Jackie Sephton	6.30pm	Stoke	Evensong	Jane Addis
9 <sup>th</sup> June <i>Trinity 2</i>	9.30am	Leavenheath	MP	David Rowe/Revd John Fowler	11.00am	Stoke	MP	Jane Addis
	9.30am	Nayland	HC 1	John Fowler	6.30pm	Nayland	Evensong	D Prior/K Hunt
	11.00am	Polstead	HC 2	Revd John Fowler				
16 <sup>th</sup> June <i>Trinity 3</i>	8.00am	Polstead	HC 2	Revd Adrian Mason	11.00am	Polstead	FS	D Rowe / L Bartlett
	9.30am	Leavenheath	HC 2 by ext	J Bond/V Watling	11.00am	Stoke	HC 1	Revd Adrian Mason
	9.30am	Nayland	FC	Revd Adrian Mason	11.00am	Wiston	HC by ext	D Prior/K Hunt
					6.30pm	Leavenheath	EPraise	The Team
23 <sup>rd</sup> June <i>Trinity 4</i>	8.00am	Nayland	HC 2	Revd Adrian Mason	11.00am	Polstead	HC 1	Revd Jackie Sephton
	9.30am	Leavenheath	HC 1	Revd Adrian Mason	11.00am	Stoke	HC 2	Revd Adrian Mason
	9.30am	Nayland	MP	Mr David Prior	6.30pm	Wiston	Evensong	Miss Kathy Hunt
30 <sup>th</sup> June <i>Trinity 5</i>	10.30am	Polstead	Benefice Eucharis	Ministry Team				
			Benefice Service					
7 <sup>th</sup> July <i>Trinity 6</i>	8.00am	Stoke	HC 2	Revd Adrian Mason	11.00am	Wiston	HC	Revd Adrian Mason
	9.30am	Nayland	HC 1	Revd Adrian Mason	3.30pm	Polstead	Gospel Oak	Revd Jackie Sephton
	10.00am	Leavenheath	First Sunday	Revd Valri Armstrong	4.00pm	Leavenheath	Messy Church	Revd Valri Armstrong
	11.00am	Polstead	MW	Revd Jackie Sephton	6.30pm	Stoke	Evensong	Jane Addis
14 <sup>th</sup> July <i>Trinity 7</i>	9.30am	Leavenheath	MP	David Rowe	11.00am	Polstead	HC 2	Revd Adrian Mason
	9.30am	Nayland	FC	Revd Adrian Mason	11.00am	Stoke	MP	David Rowe
					6.30pm	Nayland	Evensong	Mr David Prior
21 <sup>st</sup> July <i>Trinity 8</i>	8.00am	Polstead	HC2	Revd Adrian Mason	11.00am	Polstead	FS	Revd Jackie Sephton
	9.30am	Leavenheath	HC2	Revd Adrian Mason	11.00am	Stoke	HC 1	Revd Adrian Mason
	9.30am	Nayland	MP	Mr David Prior	11.00am	Wiston	HC 1 tr	Revd John Fowler
					6.30pm	Leavenheath	E Praise	The Team
28 <sup>th</sup> July <i>Trinity 9</i> <i>St James</i>	8.00am	Nayland	HC 2	Revd Adrian Mason	11.00am	Polstead	HC1	Revd Jackie Sephton
	9.30am	Leavenheath	HC 1	Revd Valri Armstrong	11.00am	Stoke	HC2	Revd Adrian Mason
	9.30am	Nayland	FC	Revd Adrian Mason	6.30pm	Wiston	Evensong	Miss Kathy Hunt
4 <sup>th</sup> August <i>Trinity 10</i>	8.00am	Stoke	HC 2	TBA	11.00am	Polstead	MW	TBA
	9.30am	Nayland	HC 1	TBA	11.00am	Wiston	HC	TBA
	10.00am	Leavenheath	First Sunday	TBA	6.30pm	Stoke	Evensong	TBA

**Key:** FS : Family Service, FC : Family Communion, HC 1 / 2 : Holy Communion 1 or 2, PC : Parish Communion, MP : Morning Prayer, MW : Morning Worship, EP : Evening Prayer, EPraise : Evening Praise, B : Baptism, *Worship leaders are subject to change.*

### Weekday Services and Groups

Bible Study	18 Laburnum Way ( <i>Rita Dibble 262580</i> ): Mondays 7.30pm 3rd & 17th June, 1st & 15th July, 5th August
Latin American Pr.Grp	18 Laburnum Way ( <i>Rita Dibble 262580</i> ): 7.30pm Monday 12th August
Parkers Way	Communion: Tuesdays 10.15am 18th June & 16th July ( <i>3<sup>rd</sup> Tuesday of month</i> )
Parkers Way	Prayer & Praise Service: Wednesdays 3pm 5 <sup>th</sup> June, 3rd July & 7th August ( <i>1<sup>st</sup> Wednesday of month</i> )
Nayland House	Holy Communion: Every Wednesday 10.45am
Pram & Toddler Service	St. James Church: 2 pm 14th June & <u>Thursday</u> 11th July ( <i>usually 2<sup>nd</sup> Friday of month - Rachel Hitchcock 263169</i> )
Messy Church	Leavenheath Village Hall Sunday 7th July 4pm-6pm inc tea

### Other Dates for your Diary

Monday 27<sup>th</sup> May Nayland Church Fete 2pm-4pm Webb's Meadow

Sunday 30<sup>th</sup> June Benefice Service, 10.30am at Polstead





*Dear all,*

One of the many privileges of my job is meeting with parties of children and showing them around our glorious church buildings. They come with a sense of enthusiasm and awe, which probably we adults take for granted. They are inquisitive and usually not afraid to ask questions. They particularly wish to ask "why" and have a desire to know what different things are for. They get right into all of the symbolism which exists in our church buildings and catch a little of the faith of the builders. These are all things which we adults tend to take for granted, or even not bother about.

Our church buildings are steeped in history and prayer. They are full of symbolism – things which speak of the Christian Faith. The font is close to the door of the building, symbolic of Baptism being the entrance to the faith. We stand in the body of the church and see at its zenith the Communion table, the altar, drawing us into the shared feast of the Holy Communion, the Eucharist, which we celebrate regularly and often, at the command of Jesus, in remembrance of him. The stained glass windows remind us and refresh our minds about the bible and the cycle of life, death and resurrection.

During this post Pentecost period, otherwise known as Ordinary Time, take a few minutes to go into one of our churches with fresh young eyes. Go when there is nobody else there and the building is quiet. Go when the building is full and vibrant. Perhaps take one of your children, or grandchildren with you. The churches are usually open during the day. Breathe in the atmosphere, the symbolism, the history, the faith and the prayer. Add some of your own and know the risen Jesus present with you. Know God, Father Son and Holy Spirit afresh in your lives.

With every blessing,

*Adrian*

## ST MARY'S, WISTON - BOOKS FOR SALE

Take a walk on the footpath which runs past St Mary's Church, Wiston, and call in to look at the second hand books for sale in the church porch - cookery, biographies, children's, fiction, etc. Last year's book sales paid for the electricity used in the church. If anyone has any books to donate please leave them at the back of the church, they will be gratefully accepted. Thank you.

## ROGATION SUNDAY

Fine weather prevailed for the tractor and trailer ride on Sunday 5th May. Kind thanks to John Rix for providing and driving the tractor and trailer around Nayland and Wiston. At various stops the crops were blessed and hymns sung. Tea was enjoyed in the wonderful surroundings at Wiston Mill and thanks go to Jeremy and Suki Cohen for once again hosting this.

## Volunteers Needed...

### Fair Trade

It probably only takes 5 hours a year. You could do it! Please be a co-ordinator for our Fair Trade Annual Event. If you feel you could do this really fulfilling and beneficial task please let us know.  
fr.adrian.mason@gmail.com or administrator@pentaccord.org.uk

### Choir

Can you sing? Would you like to praise God regularly with that great gift? Come and join St James' Church Choir it is growing fast. Interested? Contact James 01206 262993 james.finch@jfassoc.co.uk Or Adrian 01206 269471 fr.adrian.mason@gmail.com

## St James Patronal Festival Weekend

Gift Day for Christian Charity Saturday 27 July 10am– 12 noon  
Festival Eucharist in St James Sunday 28 July 9.30 am



## Christian Aid Week 12-18 May

A large thank you to all the collectors and the donors for all your support - more details in the next issue.

## Early warning for... Harvest Festivals

Sunday 29th Sept	St Mary's Wiston at 6.30pm
Sunday 15th Sept	St James Nayland at 9.30am
Friday 20th Sept	Harvest Supper Nayland Village Hall at 7pm for 7.30

## CHURCH CONTACT DETAILS ON PAGE 38

### Weekday Services

#### Monday

Morning Prayer	9.00 am	Nayland
Evening Prayer	5.00 pm	Nayland

#### Tuesday

Morning Prayer	8.30 am	Leavenheath
Evening Prayer	5.00 pm	Nayland

#### Wednesday

Morning Prayer	9.00 am	Polstead
Evening Prayer	5.00 pm	Wiston

#### Thursday

Morning Prayer	9.00 am	Stoke
Evening Prayer	5.00 pm	Nayland

## FROM THE REGISTERS



### FUNERALS

Irene Nicholls  
Olive Warner

### BAPTISM

Bella Louise Rudderham  
Mia Marie Lewin



Sound & Vision UK Ltd  
are specialised in digital TV aerial,  
satellite systems, installations.

From Domestic to communal.

Reliable & trustworthy engineers  
with the best quality.

For a free quotation call our team  
Tel: 01206 262951/Fax: 01206 262953  
Email: soundvisionukltd@aol.com

## V-EXTERMINATOR LTD COMPUTER CARE SERVICES



IS YOUR WEBSITE ON PAGE ONE ??  
GOOGLE - YAHOO - MICROSOFT  
STAY AHEAD OF THE COMPETITION

QUALIFIED SEARCH ENGINE OPTIMISATION

E-COMMERCE WEBSITE DESIGN

BESPOKE SOFTWARE DEVELOPMENT

MICROSOFT CERTIFIED SUPPORT & REPAIRS

DELL DESKTOP & LAPTOP COMPUTERS

SUDBURY - BOXFORD - STOKE-BY-NAYLAND  
LEAVENHEATH - POLSTEAD - NAYLAND  
& SURROUNDING DISTRICTS

**Microsoft**  
**CERTIFIED**  
*IT Professional*

ENTERPRISE SUPPORT TECHNICIAN

23 BRANDESTON CLOSE SUDBURY SUFFOLK CO10 0XY  
TELEPHONE: 01787 370397  
[www.v-terminator.co.uk](http://www.v-terminator.co.uk)

WHITTLE & CO.  
Chartered Accountants



Can't sleep with worrying  
over your tax returns.  
*Let us help you count your sheep!*



Business advisory, tax, audit and  
accounting services for companies,  
charities, trusts and individuals.

Century House South, North Station Road,  
Colchester CO1 1RE. Telephone: 01206 762200.

15 High Street, West Mersea, CO5 8QA.  
Telephone: 01206 385049.

[www.whittles.co.uk](http://www.whittles.co.uk)



**There.**  
When you need legal  
and financial advice



T: 01206 217300  
[WWW.BIRKETTLONG.CO.UK](http://WWW.BIRKETTLONG.CO.UK)

Colchester Chelmsford Basildon

Authorised and regulated by the Solicitors Regulation Authority (Authorisation No: 488404)  
Authorised and regulated by the Financial Services Authority (Authorisation No: 481245)

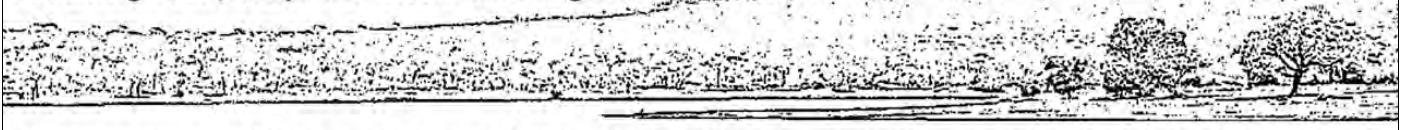


## Jane Walker, Independent Safari Consultant

[www.woodbridgesafaris.co.uk](http://www.woodbridgesafaris.co.uk) / [www.horsebacksafaris.co.uk](http://www.horsebacksafaris.co.uk)

01206 262352, [jane@woodbridgesafaris.co.uk](mailto:jane@woodbridgesafaris.co.uk)

Farthing Hall, Nayland with Wissington



Photographic, walking and bird-watching. Horse-riding a speciality. Bookings ATOL / AITO bonded.



## GENERAL MAINTENANCE & CARPENTRY



Stour Valley Carpentry

Stour Valley Carpentry  
Unit 4, Nags Corner,  
Nayland, Colchester,  
Essex CO6 4LT

Tel: 01206 262117  
Fax: 01206 263744



Over 20 years Experience  
Quality Work from Local Builder

Contact: Jane Matthews  
Tel: 01206 262117 9am-5pm  
or E-Mail: [jmatthews@svcarpentry.co.uk](mailto:jmatthews@svcarpentry.co.uk)

Bespoke headwear and  
accessories for every occasion



07850 571879/01206 262391  
[www.fabulousfascinators.co.uk](http://www.fabulousfascinators.co.uk)  
[mam@maryannemorrison.co.uk](mailto:mam@maryannemorrison.co.uk)

## Matthew Douglas

Independent Financial Advisers

*Do you need your savings to work harder?  
Is your income sustainable for the long term?  
Are your assets risk controlled?  
Are they tax efficient?  
Would you like some confidential advice?*

**"Money matters made Simple"**

Telephone, e-mail or just drop in to arrange a free,  
no obligation consultation with a professionally  
qualified independent adviser.

**4 Church Mews  
High Street  
Nayland CO6 4JF**

Telephone: 01206 265904  
Email: [info@matthewdouglas.co.uk](mailto:info@matthewdouglas.co.uk)  
Website: [www.matthewdouglas.co.uk](http://www.matthewdouglas.co.uk)

Matthew Douglas Limited is authorised and  
regulated by the Financial Services Authority.





Member No. GO33



**MAKE IT A GOOD MOVE**



**ASK US FOR ADVICE ON MOVING**

- UK door to door
- Storage services
- Commercial archive storage
- European door to door
- Commercial office moves
- Packing materials included

**Good Move Removals & Storage**

Unit 1, Holly Lodge, Holly Lane, Great Horkesley, Colchester CO6 4AW

**Colchester 01206 272780**

**Ipswich 01473 288110**

Email [guy@goodmove.org.uk](mailto:guy@goodmove.org.uk) Website [www.goodmove.org.uk](http://www.goodmove.org.uk)

# **Fresh 'n' Easy**

Your local specialist for all types of

## **Carpet, Upholstery & Leather Cleaning**

Call for a free no obligation quote

- Professional fully trained technician
- Stain/soil removal & protection for carpet, upholstery, rugs & leather
- Weekend & evening appointments available
- Courteous service
- Fully insured
- Competitive prices

**phone: 01206 842458**

**mobile: 07814 576252**

**[www.fresh-n-easy.co.uk](http://www.fresh-n-easy.co.uk)**

4 Cuckoo Cottages, Boxted Road, CO4 5HH



## **Ian Harris Ltd**

**design and building services**

*We are an established Suffolk building company with many years experience working on country houses and cottages*

**DESIGN AND PLANNING**

We will discuss your requirements, design and prepare drawings for Planning and Listed Building applications.

**GENERAL BUILDING**

We undertake all aspects of general building to include new build, conversions, extensions, alterations and maintenance. Our speciality is for carrying out work to all types of period buildings with a particular understanding of the needs of historic and Listed Buildings.

**JOINERY**

We have our own joinery workshop working alongside the general building works designing, making and fitting purpose-made joinery such as windows, doors, stairs, frames and fitted furniture for any part of the house.

Contact us by phoning on:

**01206 263632**

Or e-mail us on [ian@ianharris.ltd.uk](mailto:ian@ianharris.ltd.uk)

Champions Hill Barn, Wissington, Nayland CO6 4NL



## SMALL ADVERT COLUMN

Nayland and Wiston residents may place free adverts for items valued at under £50. Items £50 and over incur a charge of £5.

### FREE:

#### BAGS OF SHREDDED PAPER

Available from Matthew Douglas, 4 Church Mews (opposite Post Office) between 9-5, or telephone 265904.

### WANTED:

**POSTAGE STAMPS** for East Anglian Air Ambulance. Please leave them in box in the Post Office.

**UNWANTED BICYCLES** for Re-cycle Bicycles to Africa, [www.re-cycle.org](http://www.re-cycle.org). Contact Iris Sebba 262632 or take them to the Re-Cycle Depot: Unit 2 Gunfleet Business Park, Brunel Way (off Wyncolls Rd), Colchester CO4 9QX Tel: 01206 841268

**BATTERY RECYCLING** – box in the Post Office.

## LIVE RADIO 3 CHORISTER SOLO

Congratulations to Aron Jordan from Wiston who recently appeared with the City of London Symphonia on their Requiem Tour. Aron, a chorister at Ely, performed Faure's 'Pie Jesu' at the concert on 6 May, which was broadcast live on BBC Radio 3 from the Cathedral. The programme included works by Thomas Tallis, Ralph Vaughan Williams and Francis Poulenc along with a new commission by Gabriel Jackson and was conducted by renowned choral director Stephen Layton.

*Karen Elliott*

We are very busy  
in your area



## The final piece...

- Chartered surveyors & estate agents
- Residential & commercial
- Lettings & management
- Block management
- Suitably qualified and experienced staff
- Local knowledge
- Unique service - available to all who seek professional guidance
- Four generations family business building on over 150 years' in the Colchester area.

Call or visit us at:

Aston House  
57-59 Crouch Street  
Colchester CO3 3EY  
Tel: 01206 762244

Branches in:  
Braintree, Kelvedon, Sudbury  
Frinton-on-Sea & Ipswich



[www.boydens.co.uk](http://www.boydens.co.uk)



The Studio | Harpers Hill | Nayland  
Colchester | Essex | CO6 4NT

## Personalised Playing Cards

Ideal for:

- ♠ Special Events
- ♥ Corporate Gifts
- ♣ Birthday Presents
- ♦ Promotional Material
- ♠ Wedding Favours/Gifts



### Personalised Backs

**1** custom image on the card backs, with standard playing card faces.

### Personalised Fronts & Backs

**54** different images on the faces of the cards, plus a back image.

[www.spingold.co.uk](http://www.spingold.co.uk)

01206 262751

## ST. JAMES' CHURCH HALL HIRE CHARGES

<b>Monday – Friday</b> (Hourly Rates)	£4.00
<b>MINIMUM CHARGE</b> (2 hours)	£8.00
<b>Weekends</b> (Hourly Rates)	£5.00
<b>MINIMUM CHARGE</b> (2 hours)	£10.00

During Winter: Heating Vouchers @ £1 each

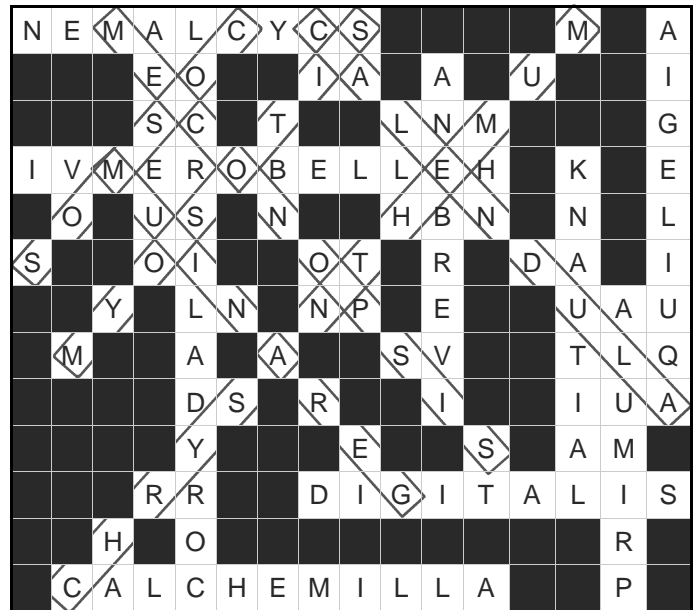
Bookings: online at [www.naylandandwiston.net](http://www.naylandandwiston.net)  
or Anna Boon 262780 [stjameschurchhall@yahoo.com](mailto:stjameschurchhall@yahoo.com)  
Collect Key from 43 Bear Street

## NAYLAND VILLAGE HALL HIRE CHARGES

Inc: Hall, Stage, Kitchen & Bar - Changing Rooms: £10 extra per session  
Licence to provide Alcohol £20 extra - not always available

Sunday – Friday Hourly Rates	Residents	Non Residents
9am – 6pm (May-Sept)	£9.00	£12.50
9am-6pm (Oct-April)	£10.00	£14.50
6pm-midnight (May-Sept)	£10.00	£14.50
6pm-midnight (Oct-April)	£11.00	£16.50
<b>MINIMUM HIRE: 2 HOURS RESIDENTS – 3 HOURS NON RESIDENTS</b>		
<b>Saturday – Sessional rates on Saturday unless stated</b>		
Daytime until 6pm	Hourly Rates as above	
Evening 6pm-midnight	£130.00	£190.00
All day	£160.00	£240.00
All day with playing field	£185.00	£260.00
Playing Field only	£40.00	£40.00
Playing Field & Changing Rooms	£50.00	£50.00
Meeting Room only (3 hour session)	£12.00	£18.00
Reduced terms for use of the hall over a period can be negotiated with the Treasurer, Andrew Gowen on 262534		
Bookings: online at <a href="http://www.naylandandwiston.net">www.naylandandwiston.net</a> or Sara Strover Tel: 07748 953175		

## WORDSEARCH



## ANAGRAM SOLUTION

1 Sweet Pea, 2 Californian Poppy, 3 Sunflower, 4 Larkspur, 5 Nigella, 6 Cornflower, 7 Dianthus, 8 Scabious, 9 Godetia, 10 Coreopsis

## Ipswich School & Ipswich High School - Travel

Do you have a child attending either of the above schools? If so you may be interested to know that there is a **direct bus** from Bures via Assington, Leavenheath, Nayland, Stoke by Nayland, Thorington Street, Higham, Stratford St Mary and Capel St Mary to each school (the girls no longer have to travel via Ipswich School). Our bus meets with an Ipswich High School bus at Copdock and High School pupils transfer to this ensuring an early arrival time at both schools. There is a similar return journey each afternoon.

The Bures/Nayland Bus Club is a non-profit making, parent run bus club. If you are interested in a place for your child or for further information please contact Charlotte Bond at [bondbusclub@hotmail.com](mailto:bondbusclub@hotmail.com) or telephone Jill Badman on 01206 262994.

## BUS TIMETABLES Service 84 (NS = Not Saturdays, Sch = Schooldays only, SHol = Saturdays & weekdays during School Holidays only)

Sudbury – Newton Green – Assington – Leavenheath – Stoke by Nayland – Nayland – Gt Horkesley – General Hospital – Colchester													
Monday to Saturday	NS	Sch	SHol							Sch	SHol		
Sudbury, Bus Station	0650	0705	0720	0845	0945	1045	1145	1245	1345	1415	1545	1550	1735
Nayland, The Forge	0728	0739	0757	0922	1022	1122	1222	1322	1422	1452	1630	1627	1812
Nayland, Doctors Surgery	0731	0742	0759	0924	1024	1124	1224	1324	1424	1459	1631	1629	1814
Colchester General Hospital	0744	.....	0814	0939	1039	1139	1239	1339	1439	1514	1644	1644	1829
Colchester Bus Station	0755	0815	0825	0955	1055	1155	1255	1355	1455	1525	1655	1655	1840
Norman Way Schools	.....	0825	.....	.....	.....	.....	.....	.....	.....	.....	.....	.....	.....
Monday to Saturday	Sch	NS	Sch							SHol	Sch		
Norman Way Schools	.....	.....	.....	.....	.....	.....	.....	.....	.....	.....	1545	.....	.....
Colchester Bus Station	0745	0755	0800	0855	0955	1055	1155	1255	1355	1510	1510	1610	1735
Colchester Head Street	0748	0758	0803	0858	0958	1058	1158	1258	1358	1513	1513	1613	1738
St Helena School	.....	.....	.....	.....	.....	.....	.....	.....	.....	.....	1520	.....	.....
Colchester General Hospital	0758	.....	0813	0908	1008	1108	1208	1308	1408	1523	1533	1623	1748
Nayland, Doctors Surgery	0811	0819	0826	0921	1021	1121	1221	1321	1421	1536	1546	1636	1801
Nayland, The Forge	0812	0820	.....	0922	1022	1122	1222	1322	1422	1537	1547	1637	1802
Stoke by Nayland Mid Sch	.....	.....	0840	.....	.....	.....	.....	.....	.....	.....	1600	.....	.....
Nayland, Doctors Surgery	.....	.....	.....	.....	.....	.....	.....	.....	.....	.....	1620	.....	.....
Sudbury, Bus Station	0853	0855	0915	1000	1100	1200	1300	1400	1500	1615	1655	1715	1840

For more information: Chambers Coaches

Tel: 01787 – 375360

[www.chamberscoaches.co.uk](http://www.chamberscoaches.co.uk)



## LOCAL INFORMATION

## NAYLAND WITH WISSINGTON COMMUNITY TIMES

Mobile Library  
Post Office  
Doctors Surgery

Parkers Way  
Primary School  
Home School Association  
Nayland Playgroup  
Woodland Corner  
Primary School Choir  
Nayland Toddler Group  
Village Hall  
Church Hall  
Royal British Legion  
Royal British Legion (Women's Sec.)  
Womens Institute  
Over 60's Club  
Bowls Club  
Nayland Art Club  
Horticultural Society  
Conservation Society  
1st Scouts & Cubs  
1st Nayland Guides & Brownies  
Nayland Youth Club  
Village Players  
Nayland Choir  
Transition Nayland  
First Response  
Friends of St. James Church  
Friends of St. Mary's Church  
Chambers Buses  
Local Police  
Police Safer Neighbourhood Team  
Babergh District Council  
District Councillor  
Suffolk County Councillor

Saturdays fortnightly alternating between: High Street 10am-11.15am, Parkers Way 3.30pm -4.30pm  
High Street Tel: 262210 Early Closing on Wednesday  
93 Bear Street Tel: 262202 (*out of hours emergency 01206-578070*)  
Surgery hours: Mon-Fri 8am-6pm (*telephone service until 6.30*) [www.northhillsurgery.co.uk](http://www.northhillsurgery.co.uk)  
Scheme Manager: Ellen Salmon, 15 Samford Close, Holbrook Tel 01473 328458  
Head Teacher: Raegan Delaney Tel: 262348  
Sec: Cheryl Leeks 272993 [c.leeks@talk21.com](mailto:c.leeks@talk21.com) Chair: Emma Wallis 271366  
Manager: Sue Clarke 263054 <http://woodlandcornernayland.blogspot.com>  
Administrator: Caroline Keep 263054 e-mail: [enquiries\\_wc1@btconnect.com](mailto:enquiries_wc1@btconnect.com)  
Jayne Kennedy 263207  
Elizabeth Huggins 263438 - Fridays 9.30-11.30am Village Hall  
Bookings: Sara Stover 07748 953175 Caretaker: Mrs Y. Spooner 262691  
Bookings: Anna Boon 262780. [stjameschurchhall@yahoo.com](mailto:stjameschurchhall@yahoo.com)  
Hon Sec. Andrew Gowen 262534  
Sec: Kathy Hunt 262014 - 2nd Wednesday each month 3pm Parkers Way Common Room  
Sec: Mrs Jeannette Finch 262993 - 3rd Monday each month 7.30pm Village Hall  
Sec: Barbara Smith 501942 President: Mrs Eva Rolfe 263151 - 2nd Thursday each month  
Sec: Mrs Eva Rolfe 263151  
Daphne Berry 262641 Liz Thorne 262664 - Wednesdays 2-4pm (*term times*)  
Sec: Lorraine Brooks 262807 Chair: Trevor Smy 262022 [www.naylandhortsoc.org.uk](http://www.naylandhortsoc.org.uk)  
Hon Sec Andora Carver 262970 Chair: John Alexander 262676 [www.naylandconservation.org.uk](http://www.naylandconservation.org.uk)  
Mr M Macbeth 01473 827239 - Thursdays 7pm  
Julie Mansfield 01787 211554 Tuesdays 5.30-7pm  
Leader: Emma Elkin 07887 296409 Tuesdays 7-9pm Chair: Maria Mason 263471  
Chair: Gale Scott 262061 Membership Sec: Emma Wallis 271366  
Sec: Cathy Allen [cathyallen@talktalk.net](mailto:cathyallen@talktalk.net) Chair: Ian McKay 242223 [dougiemckay@btopenworld.com](mailto:dougiemckay@btopenworld.com)  
Will Hitchcock 263169 - [info@transitionnayland.co.uk](mailto:info@transitionnayland.co.uk) - [www.transitionnayland.co.uk](http://www.transitionnayland.co.uk)  
Karen Elliott 263233 [kazelli@btinternet.com](mailto:kazelli@btinternet.com)  
Chair: Alan Edwards 262800  
Chair: Bill Starling 262397 [billstarling@hotmail.com](mailto:billstarling@hotmail.com)  
Tel: 01787 227233 [www.chamberscoaches.co.uk](http://www.chamberscoaches.co.uk)  
PCSO 3108 Mandy Coleman & PC 1455 Matt Paisley Tel: 101 (*non-emergency*) number  
*Babergh East SNT* email: [babergheast.snt@suffolk.pnn.police.uk](mailto:babergheast.snt@suffolk.pnn.police.uk)  
Tel: 01473 822801 (Main Switchboard) Corks Lane, Hadleigh, IP7 6SJ [www.babergh.gov.uk](http://www.babergh.gov.uk)  
Richard Cave [richardcave@talktalk.net](mailto:richardcave@talktalk.net) 262146  
James Finch [James.Finch@suffolk.gov.uk](mailto:James.Finch@suffolk.gov.uk) 263649 Rose Cottage, 5 Fen Street CO6 4HT

PARISH COUNCIL	COMMUNITY COUNCIL	VILLAGE HALL COMMITTEE
<p><b>Clerk:</b> Debbie Hattrell 01787 880935 email: <a href="mailto:pc@naylandwithwissington.suffolk.gov.uk">pc@naylandwithwissington.suffolk.gov.uk</a> - by post: Charis, Upsher Green, Gt Waldingfield, CO10 0TT</p> <p><b>Chairman</b> Gerald Battye <b>Vice Chairman</b> Mary George</p> <p><b>Councillors:</b> Patricia Fuller, Rosemary Knox, Tom Gardiner, Matthew Pescott Frost, Will Hitchcock, Mark Burbidge, Graham Walker</p> <p><b>Parish Recorder</b> Wendy Sparrow <b>Tree Warden</b> Terry Bannister <b>Footpath Warden</b> Sally Bartrum</p> <p><u>Meetings:</u> 7.30pm second Wednesday of month in the Village Hall Committee Room</p>	<p><b>Chairman</b> Alex Badman 262994 <b>Secretary</b> Lorraine Brooks <b>President</b> Ken Willingale <b>Vice-President</b> Bryan Smith <b>Vice-Chairman</b> Jenny Smith <b>Treasurer</b> Bryan Smith</p> <p><b>Executive:</b> Tricia Hall, Colin Ramsell, Iain Wright, Karen Elliott <b>Individual:</b> Claire Buller, Vicki Sargent</p> <p><u>Meetings:</u> 3 July, 4 Sept, 30 Oct, 13 Jan 2014, AGM 5 March 8pm (Exec 7.30) Church Hall</p>	<p><b>Chairman:</b> Iain Wright 263657 <b>Vice Chairman:</b> Mike Hunter <b>Treasurer</b> Andrew Gowen <b>Secretary</b> Chris Thompson <b>Bookings Sec.</b> Sara Stover</p> <p><b>Committee:</b> Rosemary Knox, Nick Moriarty, Maria Mason, Peter Mann</p> <p><u>Meetings:</u> 7.30pm first Monday every month (except Bank Holidays: second Monday)</p>
CHURCH	Organists: St James: James Finch, St Mary's: Catherine Johns	Parochial Church Council
<p><b>Priest in charge</b> (<i>Five Villages</i>) Revd Adrian Mason 263471 The Vicarage, Bear Street CO6 4LA</p> <p><b>Benefice Administrator:</b> Nicola Thorogood 262453 <a href="mailto:administrator@pentaccord.org.uk">administrator@pentaccord.org.uk</a></p> <p><b>Clergy:</b> Revd Valri Armstrong 262814 Revd Jackie Sephton 01473 810072</p> <p><b>Licensed Reader:</b> David Rowe <b>Reader Emeritus:</b> Ken Willingale 262531</p> <p><b>Lay Elders</b> David Pryor 262303 &amp; Kathy Hunt 262014 <b>Bell Ringers</b> Captain: Chris Hunt 262014</p>	<p><b>St James Choir:</b> James Finch 262993</p> <p><b>Church Wardens</b> St James: James Carver 262970 <a href="mailto:carversnayland@tiscali.co.uk">carversnayland@tiscali.co.uk</a> or Kathy Hunt 262014 St Mary's: Nicola Thorogood 262453 <a href="mailto:nicola_thorogood@hotmail.com">nicola_thorogood@hotmail.com</a> or Gerald Knox 262224</p> <p><b>Deanery Synod Reps</b> St James: Alex Murrison 262369, James Carver 262970 St Mary's: Rosemary Knox 262224, John Branfield 845107</p>	<p><b>St James</b> Lay Chairman: John Baker, Treasurer: James Carver 262970, Secretary: James Finch 262993 Rose Cott, 5 Fen Street CO6 4HT <a href="mailto:james@jfassocs.co.uk">james@jfassocs.co.uk</a>, Chris Hunt, Rod Pawsey</p> <p><b>St Mary's</b> Treasurer: Gerald Knox 262224, Secretary: Suki Cohen 262219, John Branfield, Tom Gibbons, Fiona Storey George Storey</p>

## COMMUNITY WEBSITE - [www.naylandandwiston.net](http://www.naylandandwiston.net)

Webmaster: Graham W Griffiths – Tel: 262132 - e-mail: [webmaster@naylandandwiston.net](mailto:webmaster@naylandandwiston.net)

## VILLAGE DIARY

<b>May</b>		
27th	Nayland Church Fete 2pm-4pm Webb's Meadow <i>page 19</i>	
30th	Luncheon Club for over 60s: Church Hall <i>page 3 &amp; 22</i>	
<b>June</b>		
3rd	Village Hall Management Committee Meeting 7.30pm Village Hall <i>page 43</i>	
9th	Open Farm Sunday: Lower Dairy Farm, Water Lane 11am-4pm entry free <i>page 34</i>	
9th	Conservation Society: Open Gardens 2pm-6pm <i>page 11 &amp; 22</i>	
11th	HortSoc: coach outing Sissinghurst Castle Garden & Marle Place Gardens, leaving Nayland 9am	
12th	Parish Council Meeting 7.30pm Village Hall Committee Room <i>page 43</i>	
13th	Luncheon Club for over 60s: Church Hall <i>page 3 &amp; 22</i>	
13th	Over 60s Club: meeting 2pm Church Hall <i>page 24</i>	
15th	Primary School Fete 11am-1pm <i>page 9</i>	
17th	Women's Institute: Wendy Sparrow A <i>Guided Walk in Nayland</i> <i>page 20</i>	
18th	HortSoc: Film <i>'Digging For Victory'</i> 7.30pm for 7.45pm Church Hall <i>page 12 &amp; 21</i>	
21st	Youth Club, Primary School & Woodland Corner: Snail Race Night 6pm Village Hall <i>page 12</i>	
23rd	Country Music Club: <i>'Kenny Paul'</i> 7.30pm Village Hall <i>page 9</i>	
24th	Conservation Society: John Rix: <i>'Farming in the Stour Valley'</i> 7.40 for 8pm Village Hall <i>page 12 &amp; 22</i>	
28th	Nayland Cinema: <i>'Argo'</i> 7.30 for 8pm Village Hall <i>page 10 &amp; 24</i>	
<b>July</b>		
1st	Village Hall Management Committee Meeting 7.30pm Village Hall <i>page 43</i>	
3rd	Community Council Meeting 8pm Church Hall ( <i>Exec 7.30</i> ) <i>page 6 &amp; 38</i>	
10th	Parish Council Meeting 7.30pm Village Hall Committee Room <i>page 43</i>	
11th	Luncheon Club for over 60s: Summer Tea Party at Longwood Barn <i>page 3 &amp; 22</i>	
13th	HortSoc: Scarecrow Competition judging day ( <i>closing date 6 July</i> ) <i>page 9 &amp; 21</i>	
15th	Women's Institute: John Stewart <i>St John Ambulance</i> <i>page 20</i>	
17th	RBL: outing to Boxted Airfield Museum <i>page 20</i>	
17th	Village Players: Auditions <i>'Murdered To Death'</i> 8pm Church Hall <i>page 9 &amp; 23</i>	
18th	Over 60s Club: outing, lunch at Hare & Hounds <i>page 24</i>	
19th	HortSoc: Summer Garden Party for members <i>page 11 &amp; 21</i>	
21st	Village Players: Auditions <i>'Murdered To Death'</i> 5pm Church Hall <i>page 9 &amp; 23</i>	
21st	Country Music Club: <i>'Brian's Country'</i> 7.30pm Village Hall <i>page 9</i>	
22nd	Royal British Legion: meeting 7.30pm at the Anchor <i>page 20</i>	
26th	Nayland Cinema: <i>'Quartet'</i> 7.30 for 8pm Village Hall <i>page 10 &amp; 24</i>	
27th	HortSoc: Hanging Basket Competition judging day <i>page 21</i>	
28th	Concert: Tinuke Olfimihan & Paul McGrath 5pm for 5.30 Village Hall <i>page 13</i>	
<b>August</b>		
3rd	HortSoc: Nayland Flower Show 2pm – 5pm Village Hall <i>page 13, 19 &amp; 21</i>	
18th	Country Music Club: <i>'Bob Keeley'</i> 7.30pm Village Hall <i>page 9</i>	
19th	Women's Institute: Afternoon Garden Tea Party <i>page 20</i>	
<b>Forward Planner</b>	8th September	HortSoc coach outing: RHS Wisley Autumn Show <i>page 18 &amp; 21</i>
	29th September	Macmillan Coffee Morning 9.30-12 noon Church Hall <i>page 32</i>
	4th October	Community Council: Annual Village Fun Quiz <i>page 6</i>
	5th October	Nayland Fundraising Com: Cabaret Evening <i>page 23</i>
	12th October	JAMBoree <i>page 27</i>
	16th October	RBL: outing to Martlesham Airfield Museum <i>page 20</i>
	30th October	Village Lunch: Patrick Denney <i>'To Fetch A Pail Of Water'</i> <i>page 23</i>

Thank you for your contributions – if you have any ideas or suggestions please contact the Editor

**DEADLINE FOR RECEIPT OF COPY IN THE AUGUST ISSUE IS 5PM ON:**

# 20TH JULY

CONTACT		ADVERTISING COSTS		
<p>The Editor: Lorraine Brooks Tel: 262807 E-mail: <a href="mailto:naylandcc@yahoo.co.uk">naylandcc@yahoo.co.uk</a></p> <p>Copy can be posted in the Community Times Box in Nayland Post Office</p> <p>To ensure contributions can be accommodated in the space available it is advisable that space for promotion or large articles is reserved with the editor.</p>		Six issues for the Price of Five – get one advert <b>FREE</b>		
		Size	Dimensions	Cost
		1/16 page portrait	6.3cm H x 4.4cm W	£5
		1/8 page landscape	6.3cm H x 9cm W	£10
		1/4 page portrait	13cm H x 9cm W	£17.50
		1/4 page landscape	6.2cm H x 18.4cm W	£17.50

All monies raised from the Community Times go to good causes within the community. The Editor and Community Council may not be held responsible for the accuracy of articles or any other claims made by any advertiser in the Community Times.

The Editor and Community Council reserves the right to alter, shorten or refuse any items submitted for publication.

The Community Times is produced and distributed by the **Nayland-with-Wissington Community Council**

Registered Charity No.304926

The Community Times can also be viewed / downloaded from the Nayland Community Website: [www.naylandandwiston.net](http://www.naylandandwiston.net)