



NAYLAND WITH WISSINGTON COMMUNITY TIMES

YOUR LOCAL MAGAZINE FOR NEWS AND VIEWS

OCTOBER 2012

No: 139

VILLAGE BONFIRE

It is with regret that we must insist that no garden waste or any other material is put on the bonfire this year. There are to be NO exceptions. This is due to non combustible and potentially dangerous items being put on in previous years. We are obliged, by our Insurance Company, to take appropriate action if anyone ignores this notice. Mr Bugg has again kindly offered to construct the bonfire for us and only materials supplied by him will be used.

Chairman, Community Council

FROSTY FUN FOR THE VILLAGE PLAYERS

A magical frozen land. An ancient legend of battles fought. A mighty Fire Queen and a powerful Ice Emperor....Take all these ingredients and the stage is set for the Village Players' winter fantasy **FIRE & ICE**....

A cast including loveable penguins, polar bears and even a reindeer and a moose make this a truly original musical show.

Fire and Ice is set in the village of Snowhaven in the mythical land of Ozonia, where humans and animals live together harmoniously. The history of Ozonia is one of an enduring battle across the ages with the forces of fire which are once again threatening to disturb the balance.

There is deception and peril as the drama plays out and what show would be complete without a love story and a surprise ending!

Written and Directed by Chris Hawley and Mandy Cook, the FIRE & ICE promises great family entertainment right on your doorstep....and a few surprises!

Performances are on November 30th evening, December 1st afternoon and evening, December 7th evening and December 8th afternoon and evening. *More details on page 9.*

Chris Hawley

BOOKING SECRETARY REQUIRED

We urgently need a Booking Secretary for the Church Hall.

The booking system is now working well on line and can be accessed through the Village website 'naylandandwiston.net' or just put 'Nayland Church Hall' into Google which will get you there. This means the Booking Secretary has little to do other than monitor/confirm the bookings; bill the hirers once or twice a year; and help those who cannot cope with the online booking system. Look it up and see how simple it is.

So please volunteer someone!!!

Andrew Gowen 262534, Treasurer

VILLAGE CALENDAR

Copies of the 2013 calendar, with new photographic views illustrating Nayland past and present accompanied with historical information, are now on sale at the Post Office, the Village Stores and Forget Me Not. They will also be available at various village events.

An album containing this year's entries for the calendar competition is circulating and will be on show at village events - or view the online album at www.naylandandwiston.net.

It has been remarked how truly lovely these photographs are. So now is your opportunity to go out and record something you find beautiful and memorable for the 2014 calendar. Do it while the remnants of summer are with us and the good light and colour make for delightful images. It would be nice to have new and more entrants in the next competition. The closing date for this will be towards the end of April 2013 - more details in later issues of the CT. Entries by children are very welcome.

Calendar Team, Community Council

COMMUNITY WEBSITE: www.naylandandwiston.net

SPECIAL INTEREST

The Village Quiz

Bonfire & Firework Night

Test Pit Dig in Nayland

Nayland Cinema

'Salmon Fishing in The Yemen'

'Tinker Tailor Soldier Spy'

A Night at The Races

JAMboree

Harvest Supper

Village Lunch

'The Lost Bands of Suffolk' Talk

'The Amateur Glasshouse' Talk

'Trees of the Stour Valley' Talk

Christmas Family Fayre

THIS ISSUE

Community Council

Nayland Flower Show

Over 60s Luncheon Club

Country Music Club

REGULARS

Parish Council News

Society News

Church Services

Garden Notes

Village History

PLUS

Dates for your Diary

Local Information

Contact Details

(on back pages)

NAYLAND WITH WISSINGTON PARISH COUNCIL

Meeting: 8th August 2012

COUNTY COUNCILLORS REPORT

Suffolk County Council has designated September as Suffolk Business Month; there will be a programme of events presenting and showcasing Suffolk as a great place to live and do business.

Responsibility for day-to-day running of the county's library services has been transferred to Suffolk's Libraries Industrial and Provident Society (IPS). This approach means all libraries have been kept open and the County is saving money.

DISTRICT COUNCILLORS REPORT

Richard Cave encouraged councillors, businesses and individuals to complete the questionnaire on community engagement which will help Babergh direct resources where they are most needed.

Alongside this the planning service is being looked at and Babergh require views on how the protection of communities can be maintained effectively at less cost. A representative will attend a parish meeting to explain the situation.

HIGHWAYS

Councillors had a site meeting with Steve Mary from Highways and James Finch to discuss several issues.

As a preventative measure against lorries hitting 46 Bear Street Highways have proposed footway realignment and placing a kerb across the Horse Watering. The work requiring traffic lights in Bear Street for four days would begin on 28 August.

Regarding permission for the Community Council to insert a permanent fixing for the village Christmas tree Highways queried ownership of the land but would check their records for any underground utilities.

There were problems with the drains at the A134 end of Bear Street which needed further investigation.

James Finch said he has requested data from the temporary speed activation sign in Horkesley Road.

A broken bollard on the corner of Church Lane and High Street has been reported to Highways.

Rosemary Knox said that during road works the ditches along Wiston Road had been deepened and no markers had been installed.

Mary George said it was three years since the direction sign to the church and village hall located at the Bear Street / Birch Street junction had been taken away for repair.

ALLOTMENTS

A meeting is scheduled with Charlotte Curtis of Natural England to discuss possible options and grants available for the allotment field when the current grants expire.

It was noted that not all allotments were being cultivated; a letter would be sent to allotment holders reminding them that they must be maintained.

Tom Gardiner agreed to organise placing identification numbers on each allotment.

The sorry state of Candy Lane was highlighted by an incident where the underneath of a car was damaged. Ownership of the lane was not certain but quotes for improvements would be obtained. The hedge on the village hall side was the council's responsibility and this area should be included in the annual management plan.

Mary George said Time Team archaeologists will be digging test pits in gardens and open spaces. To join in with the project the council's allotment committee would decide on a suitable location for a test pit on the allotment field.

PLANNING

Reviewing recent planning applications Mary George said those granted included the erection of a two-storey rear extension, single-storey side extension, construction of new roof to existing garage and construction of second access onto the highway at 25 Stoke Road. Conditions stated the new vehicular access must be completed in accordance with the approved drawing prior to any other part of the development taking place.

Permission was granted for installation of a Photovoltaic Tracker Arrays, erection of building to house Biomass Boiler, a

wood chip hopper and store at Gladwins Farm, Harpers Hill with various conditions imposed.

The Parish Council's application for removal of an apple and prunus tree and reduction of three further prunus trees in the village hall car park for Health and Safety reasons had been granted.

Permission had been refused on land west of Creems, Bures Road on the grounds change of use of agricultural land to a residential use with the construction of a new driveway, parking area and erection of garage would be contrary to various Policies and the Local Plan and would be a harmful intrusion into the agricultural field by virtue of its urbanizing impact which would erode the landscapes special character, compounded by its location on the valley side.

Concerns were raised on an application for listed building consent, erection of first floor side extension, a two-storey rear extensions and internal alterations at 52-54 Bear Street but it was agreed 3:1 the council would not object but would include a caution to protect the existing timbers as detailed in the Architectural History Report.

Considering Babergh's Development Framework Consultation on the main modifications to the Core Strategy councillors felt it only allowed a very limited response and did not cater for AONBs. It was felt the village should consider developing a Neighbourhood Plan which would help influence future planning decisions.

STREET LIGHTING

Councillors were happy with the appearance and effectiveness of the 2 new LED lights in Wiston Road and agreed to get quotes for the next stage; new units to replace 2 lights which are not compliant at the end of Bear Street, lights up to Parkers way which are compliant could have replacement bulbs. An application would be made for the Locality Budget to support this. Enquiries would be made regarding the options available for the Victorian lanterns.

OPEN SPACES

Babergh had requested information for their open spaces audit. It was not clear what should and should not be included so this would be queried with them.

During building work at the school the sign in Fairfield Playing Field has been removed for safe keeping. The gate onto the school playground needs fixing and there is a broken grating.

Landscaping work on the Horse Watering area will be postponed until Highways have finished work on the pavement.

VILLAGE HALL

Rosemary Knox said new locks had been fitted to the front door and the chairs had been cleaned at a cost of £250.

It had been hoped representatives of each village group who use the hall would join the committee but this had not happened.

Rabbits were causing problems and despite efforts the footballers needed to fill in holes before each game.

Tom Gardiner agreed to cut back brambles overhanging the drive from the Catholic Church garden.

PRIMARY SCHOOL TRAVEL PLAN

The travel plan, which was a requirement of planning permission to be submitted before the school broke up for summer, had been received but councillors were disappointed that data included was 4 years old. They felt this did not alleviate their concerns and the school should be asked if they are intending to compile an up-to-date plan in the new term.

BURIAL GROUND

The commemorative plaque for Jane Walker Hospital patients had disintegrated. This would be discussed at the next meeting.

A quote for cutting a path round the far end of the burial ground would be obtained from the grass cutting contractors.

IN BRIEF

A parish council representative was needed to attend community council meetings, the next meeting being 5th September.

The police reported one crime in the last month; criminal damage to a vehicle in Champions Hill.

NAYLAND WITH WISSINGTON PARISH COUNCIL

Meeting: 12th September 2012

POLICE REPORT

PCSO Amanda Coleman reported one crime in the last month; theft of a hedge cutter from the front of property in Champions Lane.

The Police can no longer supply traffic cones for use for village events.

Councillors reported concerns of illegal parking near the school; Amanda agreed to monitor the situation.

COUNTY COUNCILLOR'S REPORT

For this financial year SCC has been challenged to reduce their spend by £26.1m.

At the beginning of the school term, the children of Nayland school were able to use and enjoy two new classrooms which have been built at the rear of the school which was built on budget and on time.

HIGHWAYS

James Finch reported feedback is awaited on the data from Horkesley Road vehicle activation sign and drain clearance on the A134 / Bear Street junction will be re-done before the winter season. A request has been made for markers to identify the ditches in Wiston Road.

Measures to prevent damage by lorries to 46 Bear Street have been completed. Following concerns that the bollards may restrict access of emergency vehicles to Lock Cottage the Fire Service are satisfied this is not the case.

Following complaints regarding litter in the village, it was confirmed that road sweeping is done by Babergh DC and maintenance by Suffolk CC. The Parish Council's contractors do the litter-pick on rotation round the village which is regularly monitored. A letter will be sent to Babergh asking when the sweeper will be coming next.

Mary George said reports had been received of illegal parking and obstruction by parents near the school and the police will monitor the situation. During discussions the possibility of a footpath entrance from Parkers Way was raised.

Councillors repeated their concerns that the travel plan, which was a requirement of planning permission, had included data that was 4 years old.

Gerry Battye said councillors are still waiting for a response from SCC regarding management of Caley Green. Debbie Hattrell said Paul Gant of Highways has suggested hedges encroaching upon pedestrian access along Horkesley Road are the responsibility of Conservation Society and the Anchor but councillors queried this. It was agreed to contact Roger Troughton at SCC Property for a meeting to discuss both issues.

ALLOTMENT FIELD

Will Hitchcock reported on a meeting with Charlotte Curtis from Natural England. Two levels of stewardship are available; entry level stewardship which would produce £90 per year running for 5 years and high-level stewardship with criteria which we are unlikely to meet relating to wildflower, bird or archeological categories. It was agreed to go forward with Natural England.

The farmer would be contacted to ensure the hay is removed.

Volunteers are needed to participate in the test pit dig on the allotment field on 5-7 October.

Councillors will tidy their section of the village hall garden on another occasion as the working party on 6 October clashes with the dig.

CHRISTMAS TREE FIXING

James Finch reported Highways have checked for any utilities in the area of the proposed Christmas tree fixing. It was established that the triangular piece of land in front of the former Estate Office in High Street (including the milestone and trough) is owned by the PC. It is not part of the public highway so SCC have no concerns.

Alex Badman reported on the Community Council's plans for the proposed fixing which would be camouflaged by a recess box with cobblestones. Councillors agreed to grant permission.

PLANNING

Reviewing recent planning applications Mary George said an application for erection of a two-storey welfare building at Down To Earth Landscapes, Wiston Road had been withdrawn.

Applications granted by Babergh included: conversion of the Catholic Church of the Sacred Heart to a single dwelling with conditions relating to windows, driveway, access from the highway and no works commenced until detailed drawings had been approved; felling of an Ash Tree at 27 Fen Street; felling of 2 Oak trees covered by Tree Preservation Order at Oak Cottage, Breach Grove, Wiston - the PC had informed Babergh over a discrepancy in the address of the application.

Councillors had no objections to an extension to provide covered area over existing wash down and preparation area and extension to existing hard-standing at Anglia Grain Services Wiston Road.

The Parish Council has been notified on a consultation under the Town and Country Planning (Local Development) which lasts until 25 October and is available on the Essex CC website.

STREET LIGHTING

Councillors are awaiting hear from SCC with quotes to replace 2 lights which are not compliant at the end of Bear Street and replacement bulbs for lights up to Parkers way which are compliant and regarding options available for the Victorian lanterns.

RECREATION AND OPEN SPACES

The poster was approved for the campaign for new recreation equipment project.

The current notice board on Fairfield playing field is inadequate - it needs to be moved and should either be renovated or replaced. It was agreed that Gerry Battye should make investigations on style and cost and will report back.

Gerry Battye queried whether hedging had been planted on the boundary with Larch Grove.

Babergh had confirmed criteria for their open spaces audit, which applies to all areas of over 2,000 sq metres including allotments, burial grounds, etc.

VILLAGE HALL

Rosemary Knox reported on the problem with rabbits and possible solutions. Councillors were opposed to shooting with any weapon in an area surrounded by housing but agreed ferreting could take place on Webb's Meadow.

The Youth Club is releasing the committee room from their regular rental.

The guttering to the front of the hall is being patched for the time being as the cost of replacement is in the region of £5,000 to £6,000.

Mary George said it was difficult to judge how much pruning is required to two trees near the edge of the boundary but they will be added to the maintenance list. There is some debris on the ground and residents in Fen Street will be asked to help prevent this.

It was suggested in the public forum that minutes of VPMC meetings might be published to raise awareness of village hall matters and encourage interest.

COMMUNITY COUNCIL

A member of the PC is required to join the CC executive committee. Gerry Battye agreed to attend the next meeting on 12 November.

IN BRIEF:

Councillors agreed to move their insurance to 3 year term policy with Aviva who had quoted £584 per annum or £559 per annum for a three year term. Their existing insurers quoted £678.

A burial committee meeting will take place to discuss the tree maintenance plan for this winter.

Information on the Babergh Achievement Awards 2013 has been received.

The urgency of filling the vacancy for a Parish Councillor was discussed.

Office Matters

Comprehensive
WORDPROCESSING
Service

(Inhouse cover also provided)

Please contact
Margarette
on

01473 822860 or
07863 560945

to discuss your particular
requirement

margarette@officematters.org

Professional and Confidential

INDOOR TENNIS COURT

at Newtons Farm,
Wissington, Nr Nayland

"PAY AND PLAY"
NO MEMBERSHIP FEE
PARKING & TOILET FACILITIES

Further
details:

01206
262453

www.indoortenniscourt.co.uk



BED & BREAKFAST

1 Blacksmiths Cottages, Wiston



Small friendly B&B offering one twin-bedded room with private facilities & separate entrance, two miles from Nayland, overlooking the peaceful Stour Valley. Please enquire regarding self-catering. £30 per person per night.

Telephone: Anne Townshend

01206 262927

TOWN PRINTS

**General
Picture Framing**

Also a selection of
antique engravings
of Colchester and District.

Foster Jones
Longwood Cottage,
Fen Street, Nayland,
CO6 4HT

Tel: 01206 262483

D S Clarke

Building Services

For professional - high quality work

General building work including:-

Extensions - Renovations - Brickwork
Landscaping - Roofing - Kitchens - Tiling
Plastering - Carpentry - Decorating etc

For a free, no obligation estimate,
contact David Clarke on:

Tel: 01787 227943

Mb: 07867 851 137

dsclarkebuilding@yahoo.co.uk

7 Claypits Ave, Bures, CO8 5DA

Lower Dairy Farm

Traditionally Reared

BEEF

Hannah & Humphrey Taylor

Lower Dairy Farm,
Water Lane,
Little Horkesley

Please call in

or phone **01206 262314**

or **07810 330089**

www.lowerdairyfarm.co.uk

TO ADVERTISE IN THE COMMUNITY TIMES

Contact:

Editor: Lorraine Brooks

Tel: 262807

E-mail:

naylandcc@yahoo.co.uk

Stour Valley Landscapes

Gardening

Fencing

Landscaping

Tree & Hedge work

Handyman jobs

*For a local, friendly &
reliable service:*

Tel: 01206 263629

Mob: 07801 430751

TRG PEST CONTROL

Rabbits, Moles, Rats,
Mice, Wasps, etc
Efficient and
Economical Service

For Further
information call

Terry Gowing

Tel: 01206 322776

Mobile: 07990 954192

Colchester's Premier Roofing Specialist



Established
over 20
years

**EXTERIOR
CARE**

FLAT ROOFING - TILING & SLATING
New Roofs & Repairs - Chimney Work
- Leadwork

An Established Local Family Business
QUALITY WORKMANSHIP GUARANTEED
FREE ESTIMATES & ADVICE

For Quality, Reliability & Service Please Call

01206 618486

MOBILE 07970 016234

5 Brook Cottages, Boxted, Colchester CO4 5TW

Fix-A-Lock

Locksmith - available 24/7

LOCKS OPENED,
SUPPLIED & FITTED

UPVC DOOR &
WINDOW SPECIALIST

BURGLARY REPAIRS

CRB CHECKED



Ted Blanchette

M: 07836 551 032

E: tedblanchette@tiscali.co.uk

Learn to drive
with your local driving school



Rob Austin D.O.T A.D.I.

Fully qualified

12 years experience

Dual controlled car

Learn at your own pace

1st 2 hour lesson £25

£19 per hour there after

For more information or to book
lessons call Rob on:

01206 262106

or: **07946 085338**

Country Cars Private Hire

Personal & Professional Service

Polstead Based

**Local & Long
Distance**

Airports - Theatres

Weddings - Hospitals



Contact Dave Howard

01206 262196

07767 076976

BOBBY WATSON

OFTEC Registered Oil Technician

- *Plumbing and Heating*
- *Boiler replacement, servicing & commissioning*
- *Oil Tank replacements*
- *Bathrooms and Wet rooms*
- *Tiling*

Tel: 01376 326773

or Mobile: 07905 265567

P.S. DAY

Flooring Specialist

Over 35 years experience

**FREE ESTIMATES
PLANNING & COLLECTION SERVICE**

11 Wiston Road, Nayland, Colchester CO6 4LT

Tel: 07903 409 052

JOHN TOKELY

Painter and Decorator

Interior and Exterior Work Undertaken

Free estimates

No job too large or too small

9 Nayland Road, Colchester CO4 5EG

Telephone: 01206 845665

Mobile: 07976 848310



Nayland Private Hire

**Airport & Long Distance
Six seater executive travel**



Satellite navigation

Air conditioning

Leather interior

Traffic master

Advanced bookings advised

01206 262 049 or 07979 640 040



STOURVALLEY

HEATING & DOMESTIC SERVICES LTD

- OIL CENTRAL HEATING INSTALLATION & MAINTENANCE
- COMMISSIONING
- HOT WATER STORAGE INSTALLATION
- UNDERFLOOR HEATING INSTALLATION
- WATER SOFTENER INSTALLATION
- FULL BATHROOM DESIGN & INSTALLATION
- DOMESTIC PLUMBING SERVICES

Local experienced established registered installer

For advice or a free estimate call MARK WARREN

on Tel 01473 312047 or Mobile 07968 586613



Registered
Business
10784

DAWN DALE

BEAUTY & RELAXATION THERAPY

THATCHERS COTTAGE • SCOTLAND STREET • STOKE BY NAYLAND

**OFFERING: MANICURE, PEDICURE, WAXING
AROMATHERAPY, BODY TREATMENTS,
FACIALS, EYE TREATMENTS, MASSAGE
LADIES ONLY**

OPEN MON-SAT & UNTIL 9PM TUE & THU

GIFT VOUCHERS AVAILABLE

PLEASE PHONE DAWN:

01206 262 118

dawncdale@gmail.com

MAKING YOUR WILL

I offer a home visit service for clients wishing to make their wills, lasting powers of attorney or advance decisions (to refuse medical treatment). As a retired solicitor I help my clients make well planned arrangements (including providing witnesses to ensure legal acceptance) at a very competitive price.

Please call 01206 263420

or email me at: trevordodwell@aol.com

www.thewillbusiness.com

Mandy Cook

MUSIC LESSONS

Private piano, theory
& vocal tuition



EDITING SERVICES

Proofreading, editing & writing – online & print

01206 263210

www.mandycCook.co.uk

mirandajncCook@btinternet.com



SHORT COURSES at ASSINGTON MILL

Beekeeping for beginners
Birds of Prey, working with
Hen keeping in your garden
Historic timber-framed buildings
Chain-sawing for amateurs
Clay ovens - how to make one
Bricklaying for amateurs
Plumbing basics for amateurs
Photography: nature & landscape
Decorative rope-work
Ballroom dancing for novices
Family history research

Cooking for Health
Food for free
Natural Skin Care
Fruit tree pruning
Coracle making
Celtic drawing
Stained glass
Silver clay jewellery
Sheep for Smallholders
Pig-keeping
Bread-making
Ghost stories at Halloween

Fly Fishing
Cyder-making
Coppicing
Dowsing
Scything
Mosaic
Badgers
Upholstery
Storytelling
Hedgelaying
Felt-making
Signwriting

Contact Anne Holden: **01787 229955**

info@assingtonmill.com

www.assingtonmill.com

ROY CHAPMAN & SONS

Dear Community Council,

On behalf of my sons, Robert and John, and myself I would like to thank the Community Council most sincerely for the very kind message which was published in the August issue of the Community Times.

To think such kind remarks should be made about Estate Agents!! We genuinely tried to provide an efficient and personal service to the local villages but we live in such changed times and sadly had to conclude that it was no longer viable.

I am delighted that Robert has settled nicely with Carter Jonas, but by continuing to be associated with Nayland and the nearby

villages he will be able to continue to provide the same service to which you have become accustomed but backed up by a large national organisation.

John has never been happier. He has withdrawn from Estate Agency and is enjoying life gardening and dog caring – he is unbelievably busy.

As for me, my foot is off the accelerator and I am enjoying life interspersed with regular visits to the village – I cannot keep away!

Thank you again for your very kind remarks – they are much appreciated.

As ever,

Roy Chapman

Under the auspices of NAYLAND WITH WISSINGTON
COMMUNITY COUNCIL

The Ever Popular
VILLAGE QUIZ

Friday 5th October
Village Hall
7.30pm sharp start

£12 a table of Four
Bring your own refreshments

Further application forms in Forget Me Not, 2 Birch Sreet
or email rachel_hitchcock@hotmail.com
Further details from:
Rachel Hitchcock 263169

Don't worry if you are not a 4
let us know & we can pair you up

Application for the Village Quiz

Name:

Telephone:

Team Name:

Please submit in envelope with payment to: Forget Me Not Stores, 2 Birch Street or to 9 Bear Street

Jenny Smith, the Vice Chairman, welcomed 19 members to the meeting.

Village Christmas Tree: Highways will check their records for underground utilities near the site. The Parish Council hope to know more after their meeting on 12th September.

Parish Council Representative: There is still a vacancy on the executive committee for a representative of the Parish Council.

Correspondence: Roy Chapman has written, thanking the CC for their kind message in the Community Times. He says he is now enjoying retirement, John is very busy dog walking and gardening and Robert has settled with Carter Jonas. Roy added he still visits Nayland frequently – he can't keep away!

GRANTS:

Village Hall: The grant for improvement of external lighting; for additional floodlights on the rear wall and the side pathway, totalling £821.81 inc VAT has not yet been finalised. Work has been done on the rear wall but not the side wall. No invoice has been submitted to Bryan Smith.

Village Hall: Iain Wright said an application for a grant for the VHM Endowment Fund would be made. He outlined the VHM's maintenance funds.

He added additional shutters for the bar and kitchen areas were still required. After discussion members felt the VHM should establish what grants they require this year and put in a written application.

It was suggested that the additional shutters for the bar hatch and kitchen hatch might benefit some regular users of the hall who may be prepared to contribute to the cost. The cost would be £730 plus fitting (approx £225) plus VAT. Representatives were asked to take the proposal back to their societies and contact Bryan Smith if they could help.

Notice Board at The Forge: Members felt that it may benefit many in the village if the CC refurbished the notice board on the doors of the old Forge by Forget Me Not. Hazel agreed to contact Rachel and the new tenant.

Youth Club: A grant request had been received towards the cost of hiring the Village Hall for 37 weeks between 10th September 2012 and 16th July 2013. Members felt Bryan Smith should contact their Treasurer to answer some queries, including why the cost had increased from previous years, and to discuss their budget.

TREASURER'S REPORT:

Bryan Smith reported on finances. Income totalled £895 (*CT Adverts £595, Jubilee Mugs £40, Calendars £260*). Expenses totalled £1,929.02 (*Insurance £141, Lock Electrical VH Grant £205.62, Calendar Print £632.40, Fireworks £770, CT Print £180*). Assets totalled £16,069.44 (*Current Account £631.84, Deposit Account £15,212.34, Cash £225.26*). We hold First Response money of £1,347.67. Our assets are therefore £14,721.77.

We previously agreed to pay for the lighting improvement at the village hall, the original quote being £616.19. Our unencumbered assets are therefore £14,105.58.

COMMUNITY TIMES:

Lorraine Brooks said no volunteers had come forward to attend Parish Council Meetings and produce a report for the CT and for submission to the press.

Sadly the distribution team lost Olive Noakes who died on 31st July; she had been a valued member. Kathy Hunt has kindly joined the team and will deliver in Harpers Estate. Claire Buller will now cover Wiston Road and Harpers Hill.

Quotes for printing the CT were obtained: Spingold Graphics £180, 321 Print £256, Delta Print £345, DL Design £439, Smith & Watts £670. The Sixth Form College were unable to print the August issue because of building work so the job was given to Spingold on a trial basis. Members agreed the quality

had been better and that we should make the change to Spingold Graphics.

Space in the CT has been getting increasingly tight. Yearly adverts have increased, taking 10 pages (25% of the magazine) which is a reasonable balance with community news. Members agreed the limit on the number of ½ page adverts should remain. We now have the option to increase to 44 pages at a cost of £15 per issue. It was felt this should be used on an if and when needed basis.

VILLAGE CALENDAR:

Hazel Gardiner said calendars are on sale at the Post Office, Hatten's Stores, Forget Me Not and Gladwins Farm.

Ideas are needed for increasing sales opportunities and help is needed with selling them at village events. Please let Trevor Smy know on 262022 if you can help.

A photo album of all the entries in the calendar competition is available to borrow or can be viewed on the Nayland website. Start taking photos now ready for next year's competition.

FORTHCOMING EVENTS:

Village Quiz - Friday 5th October: The Quiz starts at 7.30pm sharp. Alex Badman has requested all village societies to submit ten questions for the quiz which he will collate. They have been received from: Bell Ringers, HortSoc, Conservation Society and Village Players.

Woodland Corner are organising the quiz and would like the questions in advance so they can check them. Jenny will have the prizes ready.

Bonfire Night - Monday 5th November: The fireworks have been ordered. Alex, Tom Gardiner and Jonathan Prescott-Smith are attending a pyrotechnic course on 16th September.

Fred Bugg has agreed to build the bonfire and remove the debris providing no-one else puts any rubbish on the bonfire. Warning porters will be displayed. Iain requested the bonfire debris was cleared before Christmas.

A £50 donation has been received by a Fen Street resident; Pam and the late Jock neighbour enjoyed watching the display from their bedroom for many years.

Christmas Fayre - Sunday 2nd December 12-2pm: The School Choir will be able to perform, Father Christmas will be attending, Transition Nayland will be doing the Soup Kitchen. Table/stall booking slips will be included in the October CT and should be submitted by 4th November.

Ken Willingale has expressed concerns that there is more than one raffle. It was pointed out that this was discussed in August 2010 and the solution at that time was that Lorraine would decorate the raffle table to make it more attractive. Also raffle type activities would be restricted to HortSoc and Woodland Corner's tombola as they have done these activities for many years. Since 2009 the CC raffle has done better. It was felt the restriction should be better applied to prevent further raffles.

SOCIETY REPORTS

RBL: David George said there are a few spaces left for the outing to British Resistance Museum at Parham 3rd October - contact Andrew Gowen if interested. They continue their medicine and hospital runs.

Art Group: Colin Ramsell said their autumn term begins on 12th September.

HortSoc: Trevor Smy said 60 members enjoyed the Summer Party in July. Exhibitor numbers were up for the Flower Show, which was dedicated to Olive Noakes who died on 31st July. The coach outing to RHS Hyde Hall and Ingatestone Hall & Garden on 16th September is full. Matthew Tanton Brown will give a talk on *The Amateur Glasshouse* on 16th October and Neil Catchpole will talk about *Trees and the Stour Valley* on 13th November at the meeting with the Conservation Society.

Conservation Society: Jill Badman said at a meeting last night Carenza Lewis from the Time Team outlined the procedures involved in test pit digging and showed examples of other projects. About 30 pit sites, including the school, allotment field, Court Knoll and private gardens would be involved in the test pit dig on 5-7 October. Volunteers to help dig and to make cakes for the display and tea party in Carvers Barn are required. On 9th October David Cawdell will talk about *'The Lost Bands of Suffolk'*.

Village Players: Jenny Smith said the cast will be rehearsing for the fantasy production, *Fire and Ice*. Performances will be on 30th Nov and 1st, 7th & 8th Dec.

They have received 12 nominations for the NETG awards to be held on 14th September.

Nayland Fundraising Committee: Jill Badman said they were planning a Race Night on 17th November to support Movember - the charity for testicular and prostate cancer.

Bowls: Sylvia Bond said they finished the summer league at the top of their division. The winter league starts on 1st October.

Youth Club: Maria Mason said their autumn term starts on 11th September.

Choir: Ian MaKay said their autumn concert, Faure's Requiem, would be held on 4th November, they were holding their annual quiz on 9th November.

Woodland Corner: Tricia Hall said the new flooring had been laid during the holidays and was so much better. They are holding their autumn cake sale on 29th September from 8.45am outside Kerridges.

Nayland Surgery: Vicki Sargent said she will not be at the practice after 18th September. A report for the CT will be compiled by someone else.

First Response: Karen Elliott said volunteers are needed to join the team.

Fire Service: A charity car wash would be held but the date is not yet known.

ANY OTHER BUSINESS:

School Parking: Problems were reported with parents parking on pavements and blocking the road for buses and larger vehicles. Concern was expressed that the situation could prevent emergency vehicles getting through. It was suggested a police presence was needed. Mary George said she would discuss this with the Parish Council.

Doctors Appointments: Concerns had been raised has over the delay to get an appointment with a doctor. It was pointed out that emergencies will be seen the same day. If anyone wishes to complain they should contact Mark Galloway.

Street Cleaning: Concerns were expressed regarding street cleaning. Mary George explained the contractor's rotation schedule. She added highways are the responsibility of Babergh and she will pass on concerns to the District Councillor.

Cinema Poster: Iain Wright asked if a poster for the village cinema could be displayed in the CC notice board.

School Open Afternoon: On 28th September from 2.30pm-4.30pm villagers are invited to the opening ceremony and to view the school facilities.

DATE OF NEXT MEETINGS:

He next meeting will be on **Monday 12th November 2012**, in the Church Hall at 8pm with Exec at 7.30pm. Meetings for rest of the year: 9th January 2013 and the AGM on 5th March.

COMMUNITY COUNCIL'S RAFFLE AT THE CHRISTMAS FAYRE

Donations of prizes for the Community Council's raffle at the Christmas Family Fayre - on Sunday 2nd December - would be very much appreciated and can be left at 20 Fen Street, Sergeants 70 Bear Street or brought along on the day.

Nayland with Wissington 2013 Calendar

Fantastic new
photographic views of the parish
accompanied by
historic views and notes

Calendars are on sale at various
village events and at the
Post Office, Hatten's Stores
and Forget-Me-Not

Still priced at just £5 !
They make ideal gifts



**NAYLAND COMMUNITY
COUNCIL**

BONFIRE AND FIREWORKS

NOVEMBER 5TH

**ON THE NAYLAND VILLAGE HALL
PLAYING FIELD**

6.45pm for 7.00 pm

**HOT DOGS * SOFT DRINKS * ADULTS DRINKS
SPARKLERS * LUMINOUS NECKLACES**

ADULTS £4 - CHILDREN £1

THE VILLAGE PLAYERS PRESENT...

Fire AND ICE

A frosty musical fantasy for all the family...

FRI NOV 30TH

SAT DEC 1ST

FRI DEC 7TH

SAT DEC 8TH

7:30PM

**PLUS MATINÉES
SATURDAYS 2:30PM**



**Nayland
Village Hall**
Church Lane, CO64JH

**Adults £6
Children £3**

Tickets available from Oct 2012
Nayland Post Office (pm only)
Or Tel. 01206 262808

Nayland with Wissington Parish Council Come & Join Us!

Even after much advertising and cajoling, we are still one councillor short. A real opportunity exists for somebody to make a difference to your Parish. At the moment, there's much happening and we are in the middle of deciding on future village lighting; additional play equipment (see advert elsewhere); how to use the large field surrounding the allotments as well as fulfilling our various other functions, including recommending Planning decisions. The Council is the only tier of Local Government that is solely concerned with our Parish and the people in it and has been since 1894! We are listened to and respected by bigger decision makers. We are a friendly bunch of people but are passionate and serious about making both Nayland and Wiston places that serve their community as a whole. The Council does make a difference. We earnestly welcome another voice round the table to bring some time & fresh ideas to influence things. Please e-mail/telephone the Clerk (Debbie Hattrell) on 01787 880935 or at pc@naylandwithwissington.suffolk or chat informally with the Chairman, Gerry Battye on 262929 or at gerry@naylandwithwissington.suffolk. Contact any Councillor to find out exactly what it entails. Ask any question you'd like. **Don't be shy or bashful.** If you **know** that you'd like to join us, please write to us via the Clerk (all addresses at rear of this magazine) explaining what you think you can offer your Parish.

Nayland with Wissington Community Council's

Christmas Family Fayre

Sunday 2nd December

12 noon until 2pm in the Village Hall

Fun for all the Family

Father Christmas & his Elf, Musical Entertainment by
Nayland Primary School, Traditional Stalls, Festive Goodies,
Children's Games, Raffle & Tombola, Mulled Wine,
Fabulous Food, Seasonal Sounds, Great Atmosphere

Christmas Tree Decoration Competition

Design something to go on the top of the tree - a Star, Fairy, Angel, etc
for age groups 6 years & under, and 7 to 14 years - Just bring your entry along on the day

(not to exceed 25cm/10" tall x 20cm/8" wide)

Application to take a table at the Christmas Family Fayre

The charge will be £5 per set of tables.

Please state what type of stall you would like to do, so
that we can make sure there is a good variety.

(Raffles/tombolas restricted: Community Council,
HortSoc & Woodland Corner only)

Please return the slip below, with payment, to:

Alex Badman at Sargeants, 70 Bear Street (262994),

by 4th November at the latest.

Limited space so book early to avoid disappointment

To Nayland with Wissington Community Council

Application for a Table at the Christmas Family Fayre

Name of Society

.....

No. of Tables

Type of Stall

Cash/Cheque £.....

Signed

Flowers in St James' Church



Would you like to help with
Church flower arranging ?

Find out how at

**A Coffee Morning
on 5th October**

at 10.30am

in St James' Church, Nayland

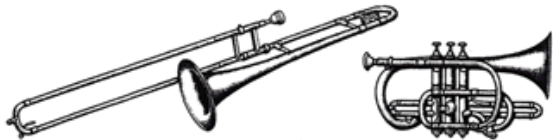
More details from

Hazel Gardiner 01206 262582

Nayland - with - Wissington Conservation Society

Registered Charity No. 268104

The LOST BANDS of SUFFOLK



Speaker ~

DAVID CAWDELL

TUESDAY OCT 9th
NAYLAND VILLAGE HALL
7-40 for 8 pm

ALL VERY WELCOME



THE ROYAL BRITISH
LEGION

ROYAL BRITISH LEGION



POPPY APPEAL

**An Event will be held on
Saturday 27th October**

9am – 12noon

Church Hall

Kathy Hunt 262014



NAYLAND CHOIR & FRIENDS

Emma Bishton, music director

IN PARADISUM

FAURÉ'S REQUIEM

and music by **FRANCK
& MENDELSSOHN**



with
NAYLAND YOUTH CHOIR
Elizabeth Pigram (violin)
Jeremy Hughes (cello)
Mary Anne Barclay (harp)
John Stafford (organ)

**SUNDAY
4 NOVEMBER
7PM**

**ST JAMES'S CHURCH
NAYLAND**

Tickets £10 (under-16s free)
available from
Nayland Post Office,
members of the choir,
or at the door.

THE NAYLAND FUNDRAISING COMMITTEE
present

A NIGHT AT THE RACES



SATURDAY 17th NOVEMBER

Nayland Village Hall - First Race 7.30pm prompt

Delicious 2-course supper - £15 per head - Bar & Raffle.

Further details from: Mrs Jill Badman 262994



To coincide with the 'Movember' campaign - the aim of which is to raise vital funds and awareness for men's health, specifically prostate cancer and other cancers that affect men - all proceeds from the evening will go to The ICENI Centre, Colchester General Hospital where they specialise in treating mens cancers. Moustaches are to be encouraged on the night!! (see the Movember website at uk.movember.com)

Test Pit Digging in Nayland 5th-7th October

So far just over 30 pit sites have been offered in the village for archaeological 'test pit' excavations to find out how the village developed over hundreds - even thousands - of years in the past.

We hope that the Primary School, Scouts and Youth Club will be among the volunteers to help with digging, sifting and recording the finds.

This is a once in a lifetime opportunity to push back the boundaries of Nayland's history.

If you would like to be involved on one or all of the days, please contact Andora Carver on carversnayland@tiscali.co.uk or 262970.

We urgently need volunteers from the village community to dig/ sift and log the finds.

No previous experience is necessary.

All ages welcome.

All the finds will be displayed at a tea party in Carvers' Barn on 7th October.

We would be grateful for donations of cakes and sandwiches for the tea.



This project is funded by the Heritage Lottery Fund in association with Managing a Masterpiece



Nayland & District Horticultural Society
Autumn speaker

Matthew Tanton Brown

returns to Nayland to talk about:

The Amateur Glasshouse

Matthew is a very interesting speaker who will pass on his knowledge and no doubt entertain us with his experiences on

Tuesday 16th October

7.40 for 8pm
Church Hall, Bear Street, Nayland
All welcome
www.naylandhortsoc.org.uk



The Village Lunch

Wednesday 17th October

11.45 am for 12 noon, Lunch at 1pm
Nayland Village Hall

An illustrated talk by **Mr & Mrs Haward**
from the Company Shed on

**'The History of West Mersea
Oysters & the Company Shed'**

Tickets: £10 available from
Nayland Post Office (afternoons only)

GENERAL KNOWLEDGE

QUIZ?

Join us for an evening
of **questionable** fun!

Friday 9 November • 8pm

Nayland Village Hall

teams of four: £5 per head

cash bar

all proceeds to Nayland Choir

to book/inquiries:
☎ 01206 262655

Nayland - with - Wissington Conservation Society

Registered Charity No. 268104

Nayland & District Horticultural Society

Open Meeting

Trees and the Stour Valley

A talk by Neil Catchpole

*Landscape & Biodiversity Officer,
Dedham Vale AONB Stour Valley Project*

Tuesday 13th November

Nayland Village Hall
7.40 for 8pm

All Welcome



**PRAM & TODDLERS
IN CHURCH**

**ST JAMES' CHURCH
NAYLAND**

SECOND FRIDAY OF THE MONTH
AT 2pm

AUTUMN:
14 SEPTEMBER; 12 OCTOBER;
9 NOVEMBER; 14 DECEMBER.

SHORT INFORMAL SERVICE
WITH SINGING, INSTRUMENTS,
STORY AND PRAYER
FOLLOWED BY DRINKS, BISCUITS
AND TOYS

DO JOIN US - ALL WELCOME

For further information contact
Rachel Hitchcock
on 01206 263169/07788 954309

St James' and St Mary's Churches



**Shared Harvest
Supper**

Friday 12th October

7pm for 7.30

in

Nayland Village Hall

*Please bring cold meats, quiches,
salads etc. and desserts to share*

Tickets £3 from
The Post Office

Children need a
'FREE' ticket



**STOUR BORDER
Country Music Club**

Nayland Village Hall 7.30 - 10.30
Admission, usually £4, doors open 7pm
No bar – please bring your own drinks.
Tea/coffee & light refreshments available

SUNDAY 14TH OCTOBER
'Spur'
welcome return for this duo from the West Country

SUNDAY 18TH NOVEMBER
'Kevin Barry'
a welcome return for this crowd pulling artist

SUNDAY 16TH DECEMBER
'Branded Country'
first time here for this trio

SUNDAY 31ST DECEMBER
New Year's Dance with party games
ticket only – from John Spooner 262691

Water Lane ARCHITECTS



An RIBA Chartered Practice

- Architectural services for new or historic buildings
- Houses, schools, commercial and development schemes
- Designs for sustainable buildings — AECB member
- Working with clients' budgets, timescales and aspirations

Chris Exley, RIBA, AECB - 07827 414847
cexley@waterlanearchitects.co.uk
www.waterlanearchitects.co.uk

HILL HOUSE

Bed & Breakfast

A delightful Tudor house
offering comfortable accommodation
set in a quiet position on the edge of the village.



Pauline Heigham
Hill House, Gravel Hill,
Nayland CO6 4JB
01206 262782
www.heighamhillhouse.co.uk

No time and want a beautiful home?

Churtons Curtains

Affordable Curtains and Roman Blinds
Cushions, bedspreads, valences,
design ideas
Repairs and alterations of clothing too.
12 years experience

Call Sarah Price
07914 413878 or 01449 740701



Shimmy, Shake,
Wiggle & Giggle
to Dance Fitness Fun

www.fundancing.co.uk

janet@fundancing.co.uk

Fun_Dancing

Fun_Dancing

So Much More Than a Dance Class
No partners required, any age and ability are very welcome

“Strictly” style
Dance-a-cise Classes

60 minute class only £5.50

in

Nayland's Village Hall
every

Wednesday morning

other venues & times available call for details

Spaces are limited - to reserve yours

Call Janet on 01473 356 582

text or call 07506 350 455

Nayland House

Off Bear Street Nayland CO6 4LA

Care Home for the elderly – we offer
long term convalescence, dementia
and respite care in our beautiful
home set in the heart of the village.

You are very welcome to visit –
come and see our excellent facilities
and enjoy a coffee in our conservatory.

For more information
please telephone:
Tel: 01206 263 199



NCA



NAYLAND CARE AGENCY LTD

Award Winning Professional Company Throughout Essex and Suffolk.

Providing exceptional quality home care services to
support you with independent living, from assistance with
personal care to administering of medications

All staff are subject to references and CRB clearance at
enhanced level and are fully trained in all aspects of care

If you would like a free no obligation appointment to discuss
your required level of support we will arrange for one of our
trained assessors to visit you in the comfort of your own home.

Please call us on
01473 231444

Email: admin@naylandcare.com
www.naylandcare.com

Registered with the Care Quality Commission and members of the United Kingdom
Homecare Association.

Business Award Winners 2003 2004 2005 2009

JMAC INTERIORS

Professional Painter & Decorator

- All Interior & Exterior Work Undertaken
- Wallpaper Hanging to the Highest Standards
- Approved Dulux Select Decorator and Government Trustmark Approved
- Fully Insured
- References Available



Contact: Jeff Macdonald
Tel: 01787 224674 – Mobile: 07778 031505
Email: jmacinteriors@aol.com



Fully Serviced Offices Meeting & Seminar Rooms
Weddings and Private Functions



Westwood Park, London Road, Little Horkesley, Colchester CO6 4BS
01206 272300 enquiries@westwoodpark.co.uk www.westwoodpark.co.uk

A.D.J Design

Architectural Services

Planning & Building Regulations

Architectural plans drawn for new homes, extensions, loft conversions & alterations.

Extensive local portfolio of design and building projects.

Ashlaburn
Coach Road
Gt Horkesley
Colchester
Essex
CO6 4AS

Tel: 01206 271163

www.adjdesign.co.uk



Forthcoming Events:

16 November: Music by the Fireside
with - 60's band - Tyler Kemp Duo
including chicken in a basket £5

Call for our: Christmas office party menu
Now taking bookings for Christmas Day

The Hare and Hounds at Leavenheath,
your refurbished 'family friendly' village Pub
offers a hearty welcome as a FREEHOUSE serving
a variety of beers, plus local 'guest' casked ales.

Proper Pub food served daily from £5.95

Sunday Roasts from £5.95

Family Platter from £19.95

(Serves two adults & two children)



01787 212396

www.hareandhoundisleavenheath.co.uk

V-EXTERMINATOR LTD

COMPUTER CARE SERVICES



IS YOUR WEBSITE ON PAGE ONE ??
GOOGLE - YAHOO - MICROSOFT
STAY AHEAD OF THE COMPETITION

QUALIFIED SEARCH ENGINE OPTIMISATION

E-COMMERCE WEBSITE DESIGN

BESPOKE SOFTWARE DEVELOPMENT

MICROSOFT CERTIFIED SUPPORT & REPAIRS

DELL DESKTOP & LAPTOP COMPUTERS

SUDBURY - BOXFORD - STOKE-BY-NAYLAND
LEAVENHEATH - POLSTEAD - NAYLAND
& SURROUNDING DISTRICTS

Microsoft
CERTIFIED
IT Professional

ENTERPRISE SUPPORT TECHNICIAN

23 BRANDESTON CLOSE SUDBURY SUFFOLK CO10 0XY
TELEPHONE: 01787 370397
www.v-exterminator.co.uk

PETER MOSS & SONS

Providing all aspects of
vehicle maintenance



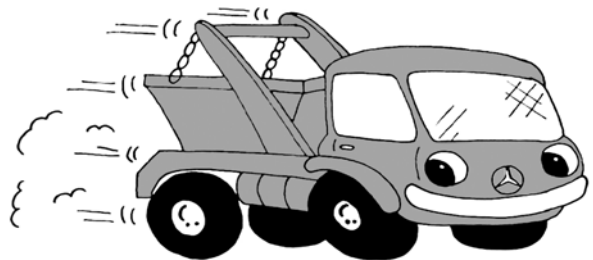
**68 Bear Street
Nayland
Tel: 01206 262866**

SERVICING ■ REPAIRS

BUGG SKIP HIRE

**For All Your Waste
Disposal Requirements**

- Excellent Service
- Lowest Prices
- Various Sizes to Suit Every Situation



Tel: 01206 262605

www.buggskiphire.co.uk

The Woodyard, Gravel Hill, Nayland, CO6 4JB



Gladwins Farm

Harpers Hill

Nayland

Suffolk CO6 4NU

Tel: (+44) 01206 262261

Fax: (+44) 01206 263001

E-mail: GladwinsFarm@aol.com

www.gladwinsfarm.co.uk

- Award-winning self-catering cottages – sleeping 2–8 people. Charming conversions of period farm buildings, some are designed to be accessible by accompanied disabled visitors, some luxury cottages with private hot tubs.
- Moving house? Longer tenancies in the Winter period can be arranged.
- Keep fit in our swimming pool – open to non-residents on a contract basis, shared and sole use times.
- Swimming lessons throughout the week. Fully air-conditioned in a lovely building. Available for childrens' parties.
- Guests have the use of the pool, sauna, hard tennis court and playground. The lake is stocked with coarse fish. Pets welcome.

Brochure and details available from Stuart and Susie Bradshaw. 01206 262261

www.gladwinsfarm.co.uk



We are based in Myland in Colchester and offer a wide range of services to include:

- All aspects of carpentry including Kitchens, Storage Solutions, Wardrobes, Hanging Doors, Shelving
- Laying wood & laminate flooring
- Tiling walls and floors
- Painting & decorating
- Fencing, Decking, Pergodas, Sheds

We will also do all those small jobs such as assembling Flatpacks etc

Please visit our website to view our work and to see full range of our services:

www.colchestercarpenter.com

References available

Please call for a free quotation on

07527 427788 or 07779 621892

01206 842835

^{local}
Your cure for all those
computer headaches!



Mac & PC hardware, software & support
01206 804428 • www.computergenic.net



Computergenic

Professional care for Mac & PC

✂ cut out and keep near your computer for when you need us!

PLUMB & SON LTD

YOUR LOCAL PAINTER & DECORATOR

10% DISCOUNT ON ALL INSIDE DECORATING

FROM 1st OCTOBER 2012 UNTIL 28th FEBRUARY 2013

Discount applies to labour only - quote 'Community Times' for Discount

Fully Insured - Friendly Professional Service

No Job too Big or Too Small

Call Barney for your free quote: 01206 264116 07856 540664

or email: plumbandsonltd@gmail.com 2 Laburnum Way, Nayland CO6 4LG



FRENCH & SPANISH LANGUAGE TUITION



Retiring abroad, going on holiday or interested in languages ?

Working towards GCSE, AS or A2 exams?

I have a first class degree in French and Spanish and
experience with both adult and teenage students.

No obligation



Call Paula Kleyn on 01206 808 323 (Nayland) paulakleyn@btconnect.com

ANNUAL FAIRTRADE COFFEE MORNING



Saturday 13th October

10am-12 noon Church Hall Bear Street Nayland

There will be craft items for sale as well as a good range of dried foodstuffs and a small selection of organic cotton clothes.

For those who wish to order in advance, catalogues and ordering details will be available from late September at the back of St James' Church.

Note this date in your diary - the same day as the JAMboree.

A co-ordinator for this event is urgently needed.

The job is not onerous; it has just one burst of activity each year. If you feel you could help with this please contact Fr. Adrian on 01206 263471 or email fr.adrian.mason@gmail.com.

THE FRIENDS OF ST. JAMES' CHURCH

ANNUAL

JAMboree

Saturday 13th October

10 am – 12 noon Carver's Barn, Mill Street

We shall have a variety of preserves - marmalade, jams, fruit jellies and chutneys.

All money raised will be for the enhancement of our ancient and beautiful parish church.



As usual, the Friends will welcome donations of sugar. If you can help, please leave it at the back of 15 Birch Street or call 262800 for collection.



CHURCHYARD AUTUMN WORKING PARTY



Saturday 27th October
from 9am – 12 noon

Please bring Gloves, Rakes, Secateurs, Wheelbarrows, etc

All welcome, no skill necessary.
Tea, coffee & biscuits provided.

James Carver 262970

VILLAGE HALL GARDEN WORKING PARTY



Saturday 6 October
from 9am

Please come along and join us
and make it a social occasion.

It will be useful to bring tools,
gloves, wheel barrows.

Andrew Gowen 262534

Nayland Over 60s LUNCHEON CLUB

A Monthly Lunch for Senior Citizens
Church Hall ~ 12.00 noon for 12.30 pm ~ £3

23 October
27 November
11 December Christmas Lunch

Come along and join the friendly atmosphere for a chat with friends, old and new.

If you would like to join us for lunch just come along. If transport down to the Church Hall is difficult telephone Olga Alexander on 263923 to see if we can collect you.



OLIVE NOAKES

Wendy, Alan and Val on behalf of John and the family would like to thank everyone who attended mums funeral and wish to express their heartfelt thanks to all those who made the church look so beautiful, the choir, organist and vicar who made the service so special, the wonderful ladies of the WI who provided the refreshments in the village hall, the HortSoc for adorning mums bicycle in such a fitting manner and everyone else for their love, support, kindness and thoughtful gestures during this very sad and difficult time.

Thank you all so much, and thank you for your generosity in raising £784.60p, in memory of Olive, for the St James Church Fabric Fund.

DO YOU THINK THAT NAYLAND AND WISSINGTON NEEDS SOME NEW PLAYGROUND EQUIPMENT?

**YOUR PARISH COUNCIL NEEDS YOU
TO HELP MAKE IT HAPPEN...!**

We recently sent round a questionnaire asking for opinions on the Nayland playground and it seems there is some desire to see it improved.

There is around £5000 available from Babergh funding as a starting point for this project and it may well be that there are other grants and match funding available to develop the playground for the community of Nayland and Wissington.



We are looking for a volunteer or group of volunteers to look into this - investigate funding - and take the project forward in partnership with the Parish Council. This has worked well

in other villages which have now got some really great playground facilities.

So if you use the village playground and would like to see it improved then this is a real opportunity. If you are interested in getting involved please contact the Clerk of the Parish Council, Debbie Hattrell on tel: 01787 880935, e-mail: pc@naylandwithwissington.suffolk.gov.uk

Do You Know Someone Eligible For The Walsh Trust Christmas Bonus?

Each Christmas the Walsh Trust, which has two parish council trustees and three others, gives out small cash bonuses to those over 80 who have lived in the village at least three years and who would welcome such a bonus. As the original charities were for providing food and fuel, the Trust gives a present to those who have previously had the bonus but are now in residential care. The income is very small and depending on how many are eligible the amount is normally around £20 for a single person and £25 for two people living in the same house. There is no official way we can find out who is over 80 so we rely on local knowledge and that means all of you.

So please let us know if you are going to be eighty or know someone who will be by Christmas. Contact Mr Battye, Mrs Rolfe, Mrs Mig Knight, Miss Kath Hunt or me, Mrs Knox, my number is 262224. If you already have the bonus and are still living in Nayland you will of course continue to get it and don't need to inform us. But because our income is so small once we have paid out for the year we simply do not have any money left to give late-comers so PLEASE let us know by the **1ST OF DECEMBER**.

Rosemary Knox

NAYLAND VILLAGE HALL CINEMA

EWAN MCGREGOR
EMILY BLUNT
KRISTIN SCOTT THOMAS
AMR WAKED

Cert 12A

**SALMON
FISHING
IN THE YEMEN**

DIRECTED BY
LASSE HALLSTRÖM

Friday 26th October



Start 8pm Bar open at 7.30pm

Tickets £5 (inc tea/coffee and biscuits) Ice cream available available from the Post Office (afternoons) or on the door

GARY OLDMAN BENEDICT CUMBERBATCH COLIN FIRTH
TOM HARDY JOHN HURT TOBY JONES MARK STRONG

**TINKER TAILOR
SOLDIER SPY**



Cert 15

Friday 23rd November



Nayland with Wissington Society News



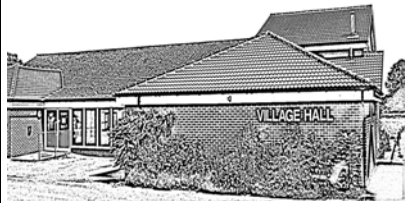
NAYLAND CHURCH HALL

Treasurer Andrew Gowen 262534

BOOKING SECRETARY VACANCY

We urgently need a Booking Secretary for the Church Hall.

The booking system is now working well on line and can be accessed through the Village website 'naylandandwiston.net' or just put 'Nayland Church Hall' into Google which will get you there. This means the Booking Secretary has little to do other than monitor/confirm the bookings; bill the hirers once or twice a year; and help those who cannot cope with the online booking system. Look it up and see how simple it is. **So please volunteer someone!!!**



NAYLAND WITH WISSINGTON VILLAGE HALL

Chairman: Iain Wright 263646

Secretary: Christine Thompson 262825

Babergh District Council has put back the rubbish collection charge until next year but we are still planning on reducing the number of Village Hall bins and padlocking them.

The **Village Hall Gardening morning will be from 9am on Saturday 6th October** and we hope that as many as possible will break away from their archaeological digs for a couple of hours to help us. The gardens give a good impression of our Hall to outsiders; many of whom hire the hall for their functions; an additional income that subsidises the cost of the Hall for our own use.



ROYAL BRITISH LEGION

Secretary: Andrew Gowen 262534

Chairman: Ken Willingale 262531

We have still got vacancies for our visit to the 390th Bomber Group Memorial Museum and the Museum of the British Resistance Organisation at Parham near Framlingham on Wednesday 3rd October starting at 9am from the Surgery. Names to the Secretary soonest. Leave a message if he is not in.

Our next meeting is the AGM in the Church Hall at 8pm on Monday 29th October. Air Commodore Bob Lightfoot will be giving us a talk on his career in the RAF at the start of the meeting and we welcome anybody to come along for his talk. We shall be having a few drinks from 7.30pm; so come along.

We are planning to organise a bus to go to Dover Castle next April; date not yet known. Anybody interested should contact the Secretary.

Members; please note that we are having our Joint Party with the Women's Section on 10 December 2012 in the Church Hall. Same procedure as last year; bring a plate of food and other refreshment.



NAYLAND AND DISTRICT WOMENS INSTITUTE

Secretary: Jeannette Finch 262993

We were very sad and shocked to hear of the death of Olive Noakes, an enthusiastic and friendly member for many years. We have many happy memories of Olive, especially for her love of flowers and riding her bicycle in all weathers.

Our members have enjoyed a very sociable Summer. We have had an outing to the Mercury Theatre, to see Doctor in the House. Both Kathleen Fehler and Barbara Miller held coffee mornings at their homes, and everybody loved sitting in their beautiful gardens in the sunshine. The next coffee morning is to be held by Ann Channon on 27th September.

The annual garden party on 20th August was held at the home of Jeannette Finch, it was a perfect summers day and the church bells rang in the distance, our members arrived in lovely hats and wearing red, white and blue, and they all looked very colourful and there was lots of laughter and chatting over a cup of tea. Delicious sandwiches and cakes were served.

Elizabeth Wakefield has started teaching crochet to an enthusiastic group of Ladies at her home on Tuesday mornings.

The Reverend John Eley "the Cooking Canon", our speaker booked for our September meeting, was unable to attend. At short notice Elizabeth Wakefield, read from a collection of her favourite poems, quotations and readings which kept us entertained.

The 15th October brings a talk by Mrs Katrina Myers about the *Colchester Owl Rescue Centre*, at the AGM on 19th November Irvine George will talk about *Body Language*, and on 17th December the subject of Nicola Snow's visit will be *Belly Dancing*.

Visitors and new members are always welcome to join us.

Pat Bradford



NAYLAND CINEMA

Chris Thompson Secretary V.H.M.C.

On **Friday 26th October**, we will be showing **Salmon Fishing in the Yemen**. This film is a British romantic comedy, starring Ewan McGregor and Emily Blunt.

On **Friday 23rd November** we will be showing **Tinker, Tailor, Soldier, Spy**. This film was due to be shown on the same night of the opening ceremony of the Olympics. When we realised that this was going to be an event that would draw a huge audience, we decided to postpone our film show. Apologies for having to make this cancellation.

The doors open at 7.30pm the film begins at 8pm. We have an interval for drinks and chat. Tickets cost £5. All profits go towards the upkeep of the Village Hall. Do make a date in your diaries for these events.



HORTICULTURAL SOCIETY

Sec: Lorraine Brooks 262807
lorraine.nayland@btinternet.com

www.naylandhortsoc.org.uk
Chair: Trevor Smy 262022

HortSoc was shocked and saddened by the death of Olive Noakes on 31st July. Olive had been an committed member of HortSoc since the mid 1880s and was our Treasurer for 16 years until 2007, when she retired from that role but remained very active on the committee. Known for her love of flowers and exceptional arranging skills, she was HortSoc's expert in this field, always taking an enthusiastic lead on organising our flower festivals.

Held just days after this sad news, this year's Flower Show was dedicated to Olive. The Committee will be purchasing an Olive Noakes memorial cup to award annually at the Spring Show. It will be a happy reminder of an enthusiastic, caring and valued friend.

Show day on 4th August saw a steady flow of visitors coming along to the 31st annual Flower Show – as reported on page 30. We can already reveal that the subject on the photography class at the 2013 show will be 'Autumn Colour' so get out and about with your cameras soon to capture some colourful shots. Those taken in Nayland and Wiston could be entered in the next calendar competition.

The weather was on our side for the coach outing on Sunday 16th September. First stop was **RHS Hyde Hall** with its famous hilltop garden and far reaching views. The climb, for those that didn't use the buggy, was certainly worth it; particularly spectacular were the herbaceous borders, modern roses, neat box hedges and the drought tolerant garden. There were plenty of resting places to relax and take in views of the ponds, the lush lawns and sculptures.

By contrast at **Ingatestone Hall** it was the magnificent 500 year old manor house containing paintings, furniture and memorabilia that stole the show. Built by Sir William Petre, Secretary of State to four Tudor monarchs, and occupied by 19 generations of his descendants there was an array of artefacts and features to explore; from impressive tapestries to a macabre bloodied tunic worn by the 4th Baron Petre at his execution at the Tower of London in 1684. There was also an interesting exhibition by the Heritage Centre Needlework Group including stitchwork, applique, patchwork and some fascinating embroidered postcards.

The ten acres of grounds included extensive lawns, walled garden and stew pond, an avenue of ancient lime trees, and a mulberry tree laden with tasty ripe fruit. It was as well we weren't asked to show our hands before leaving as stained fingers provided evidence of who had been tempted!

Once autumn is upon us activities will take shelter inside. On 16th October **Matthew Tanton Brown** will give an illustrated talk on **'The Amateur Glasshouse: it's structure and its uses'** at the Church Hall, Bear Street, at 7.40 for 8pm. Non-members are very welcome, entry is free.

Matthew, who is the manager at The Place For Plants at East Bergholt, is a popular and knowledgeable speaker on a variety of gardening topics and usually has a number of useful and amusing tips to pass on.

At the joint meeting with the *Conservation Society* on **Tuesday 13th November Neil Catchpole**, Landscape & Biodiversity Officer, Dedham Vale AONB Stour Valley Project, will be speaking about **'Trees and the Stour Valley'** at Nayland Village Hall 7.40 for 8pm. Non-members are very welcome, entry is free.

We will be having a stall at the Community Council's **Christmas Family Fayre** on Sunday 2nd December, 12 noon to 2pm in the Village Hall. As usual, donations of seasonal items for sale on the Hortsoc stall, or for our raffle, would be very much appreciated and can be brought along on the day or left with a committee member.

The committee has been busy planning the calendar of events for 2013 including the **Spring Show** which will be held on 23rd March, so bear this in mind when planting your bulbs this autumn. The schedule is now available and shown on page 27 and on the website.

We hope to have two coach outings again next year; in June a contender is Sissinghurst Castle Garden, and in September to RHS Wisley to view the garden in late summer and attend their Flower Show.

There will be more news in the next issue and the website is being updated as plans for 2013 progress.



Hyde Hall



NAYLAND WITH WISSINGTON CONSERVATION SOCIETY

Hon. Secretary: Andora Carver 262970
carversnayland@tiscali.co.uk

www.naylandconservation.org.uk
Chairman: Mr J Alexander 262676

One of the most exciting projects in Nayland for many years is the forthcoming Test Pit Excavation weekend from Friday 5th Oct to Sunday 7th October. Dr. Carenza Lewis, of TV's Time Team fame and Cambridge University, will be bringing her team of archaeologists to explore more of Nayland's history under the Managing a Masterpiece project which is funded by the Heritage Lottery Fund.

The object of the dig is to excavate a one metre square pit up to 1.2 metres deep by removing layers of soil 10cm at a time. These layers are recorded separately to build up a picture of the settlement pattern in the village. The records will be interpreted by Access Cambridge Archaeology and included in national records. The project will therefore be contributing to our country's history as well as that of the village.

Carenza will explain the results to us at a public meeting in Nayland after the finds have been analysed, and owners will be able to keep the finds from their gardens.

So far 36 pit sites have been offered with many offers of help from village residents and outside enthusiasts. However, as a minimum of 4 people are needed at each pit, we could do with even more help! Please contact me if you would like to be involved on any or all of the days. No experience is necessary, as you will be shown what to do. Sifting, cleaning and logging finds is a relatively light task which can be done sitting down!

The Lost Bands of Suffolk is the subject of a talk by David Cawdell at our next Open Meeting on Tuesday 9th October. (7.4pm for 8pm in the Village Hall.)

Constable Sketch: Some good quality postcards of the sketch are now available from Forget Me Not, 12 Mill St, and 17 Fen Street price 40p each or £3.50 for 10 cards.

The Joint Meeting with Nayland Hortsoc is on Tuesday 13th November when Neil Catchpole of the Dedham Vale and Stour Valley AONB Project will talk about Trees and the Stour Valley. We might even be able to persuade him to sing one or two of his famous Essex and Suffolk folksongs.

TELEPHONE KIOSK

The Wiston BT Kiosk which was adopted by the Conservation Society and moved to Bear Street earlier this year, has now been completely refurbished by John Padget. Grateful thanks are due to him for doing such an excellent job. We would also like to thank John Parsonson, who lives nearby, for all his help and advice. His expert knowledge of K6 Kiosks has been invaluable and without him the project would not have run so smoothly.

We would welcome ideas of what to put inside, such as a book exchange, magazine exchange or village information centre. Please let us know what you think.



BOWLS CLUB

Secretary: Eva Rolfe 263151

Following on from the last report, we went to Bildeston and managed an 8-2 win, a result that was repeated at Polstead, Hitcham, Stratford St Mary and at home when Elmsett came to us. At this point we were safe at the top of the group, with no one able to catch us so the last two games could be slightly more relaxed. When Stratford St. Mary came to us we managed a 6-4 win. Our last game away at

Whatfield was a very tight affair; in the first session one team won and one lost by a couple of shots, disappointing but not a disaster, in the second session one team took command and never looked back, the second team however just never seemed to be in control and lost heavily also losing us the shot advantage so for the only time this summer we lost 4-6.

On the 12 September came the league play-offs at Needham Market. The five group winners all have to play each other. Our two fours played Copdock and Belstead, we beat the Copdock team, but the Belstead game we lost heavily. After a refreshment break the two triples had to play Knodishall and Brockley. The game against Knodishall was a very tight with Nayland being 11-8 up with one end to play, the last end went against us, despite the efforts of the skipper who desperately tried to get a shot in where her team mates had failed. They went down 4 shots thereby losing 11-12. The team playing Brockley were never in command and again we lost heavily, so of the five clubs present we finished 5th, a disappointing end to an otherwise very good season, lets hope we can go through the Winter League with similar success.

Fixtures

October: 1st Hadleigh away, 4th Stanningfield away, 17th Stutton home, 24th Martlesham home, 27th HNS finals at home, 31st Bramford home.

November: 7th Brantham home, 12th Burstall away, 14th West Bergholt home (friendly), 21st Polstead home.

Sylvia Bond

NAYLAND FUNDRAISING COMMITTEE

Secretary: Jill Badman 262994

After our rest during the Summer we are back with **'A Night At The Races' on Saturday 17th November** at The Village Hall. For those of you who have never attended a race night before it consists of 8 races being shown on film and race goers betting on the winning horse. There is no skill or knowledge involved – you bet on a horse because you like its name or the colour of the jockey's racing silks! Stakes are kept low – as is the prize money! Tickets for the fun evening are £15 each to include a delicious 2-course supper.

The event coincides with the 'Movember' campaign – raising funds to research into male cancers. All proceeds from this evening will be donated to The ICENI Centre at Colchester General Hospital where they specialise in treating such cancers and training other specialists to do the same. Please see the Movember website for full details of the international month-long event – moustaches are to be positively encouraged on the night.

We will be looking for race sponsors and all the horses are available to be 'bought' and named – there will be a prize for the most inventive name suggested and for the best moustache (real or otherwise!). Please see the flyers coming through your door shortly. Further details from Pam Baker on 262518 or Jill Badman on 262994.



NAYLAND ART GROUP

Daphne Berry 262641

The first meeting of the Art Group's new term produced a capacity attendance which included at least 2 new members despite some of our Old Faithful's being unable to be there! Daphne feels that we will not therefore be able to accommodate any more new members and will start a waiting list from now on.

Discussions were held on what tutors (old and new) to invite for this term.

Daphne also mentioned that she is thinking about putting a list together of local art exhibitions which the group may want to visit and / or exhibit at some and would appreciate member's feedback.

Liz mentioned the group's finances could possibly be used to fund the purchase of a new overhead projector which would prove a useful tool to be used by our visiting tutors, she would contact them to find out their reactions before purchasing the item.

Colin Ramsell



THE VILLAGE LUNCH

Jo Murrison 262369

The next Village Lunch will be held on Wednesday 17th October. The talk by Mr & Mrs Haward from the Company Shed will be *'The History of West Mersea Oysters and the Company Shed'*.

The lunch will be held in the Village Hall, 11.45am for 12 noon for the talk and lunch at 1pm. Tickets, priced £10, will be available from mid September at Nayland Post Office (*afternoons only*). Thank you for your continuing support.

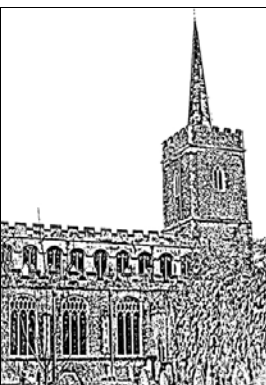


NAYLAND OVER 60S LUNCHEON CLUB

A Monthly Lunch for Senior Citizens ~ Church Hall ~ 12.00 noon for 12.30pm ~ £3

The next luncheons will be on 23rd October and 27th November in the Church Hall. The Christmas lunch will be on 11th December at Longwood Barn - make a note of them in your diaries and come along and join the friendly atmosphere for a chat with friends, old and new.

If you would like to join us for lunch just come along. If transport down to the Church Hall is difficult telephone Olga Alexander on 263923 to see if we can collect you.



THE FRIENDS OF ST. JAMES' CHURCH, NAYLAND

Registered Charity Number 1052641

Chairman: Alan Edwards 262800

The JAMboree will take place on Saturday 13th October, as usual in the Carver's Barn, Mill Street between 10am and 12 noon. We shall have a variety of delicious home-made preserves on sale - marmalades, jams, fruit jellies and chutneys.

Many thanks to the many people who donated sugar anonymously; it helped us greatly! All money raised will be for the enhancement of our ancient and beautiful parish church.

We look forward to welcoming everybody for the Annual Candlelit Carol Service of Carols and Lessons on Sunday 23rd December at 6.30pm in St James' Church. Following the candlelit Service enjoy a glass of wine and a mince pie before the journey home.



NAYLAND CHOIR

Secretary Cathy Allen
cathyallen@talktalk.net

Chair: Iain McKay 01206 242223
dougimckay@btopenworld.com

'In Paradisum' will be conducted on 4th November by Emma Bishton. The concert will include a new arrangement of the much loved Faure *Requiem* with harp, cello and violin. Also included Faure's *Cantique de Jean Racine* and Mendelssohn's *Verleich uns Freiden*. Senior choir members from Nayland School will join the choir to sing *Panis angelicus*. Please see posters for more details.

There will be a Nayland Choir Quiz on 9th November in the Village Hall. This almost annual fundraiser for choir is always great fun. Teams of four at £5 per head. There will be a cash bar on the night.

Look out for Nayland Choir Mincemeat at the Village Fair in December. Let your tastebuds sing!

Nayland Choir rehearses at Nayland School on Thursday evenings 8pm – 10pm. New members are always welcome. We do not hold auditions. If you want to sing, come along join us.

For more details contact Emma Bishton 01206 262655 or Iain McKay 01206 242223.

Teresa Moriarty



NAYLAND SURGERY NEWS

www.northhillsurgery.co.uk

We will be holding our annual flu immunisation clinic at Nayland Surgery on Saturday the 6th October 2012. We will be sending out letters to patients who are suitable for the vaccination. If you are unsure whether you are entitled to a flu vaccination please contact the surgery. If you are unable to make this date we are also holding clinics at West Bergholt Surgery on Saturday 29th September and at North Hill

Surgery on Saturday 13th October

Did you know you can order your repeat medication and find out about the practice by visiting our website www.northhillsurgery.co.uk.

We would also like to remind patients to allow 2 working days (excluding weekends) to process repeat prescription requests.

Victoria Hitchings MPharmS

Announcement from the partners

We are very sorry to announce that Victoria Hitchings will be leaving the practice with effect from 18 September 2012 on the grounds of redundancy.

The partners want to stress that the reasons for our decision are purely commercial ones, and not in any way due to any unhappiness with Vicki or the work that she undertook in the practice: she has always done an excellent job, and it is with great regret that we have reached the decision to make the pharmacist role redundant.

We did offer her the opportunity to stay on as Lead Dispenser, but she has understandably decided that this would not make the best use of her knowledge and skills as a pharmacist.

We are very sorry to see Vicki leave, and wish her all the very best for the future.

The Partners, Nayland Surgery, North Hill Medical Group



TRANSITION NAYLAND

www.transitionnayland.co.uk

Will Hitchcock T: 263169 M: 07768 435719 E: info@transitionnayland.co.uk

The 16th October is the day chosen by The Food and Agriculture Organisation of the United Nations to celebrate World Food Day. Such a day aims not only to increase awareness of the continued problem of global hunger, but also to promote and encourage the development of sustainable food sources within communities at a variety of levels when the world is facing growing populations and quite often a reduction in the availability of suitable agricultural land.

Over the past decade Britain has seen an increase in the number of people on waiting lists for allotment plots. Possibly as a result of the recession we have faced and the interest in not only trying to reduce supermarket bills, but also knowing the origin of our food supplies. The annual Transition Nayland Allotment Family BBQ in August allowed many to come together, enjoy remarkably dry weather (even though it had poured it down an hour before hand), share wonderfully home grown food and recipes and just appreciate how fortunate we are as a village to have such allotment provision. The children also took advantage of having plenty of room to play lots of games and the opportunity to see just how many toasted marshmallows could be eaten in one sitting!

Another form of food provision growing in recent times has been the formation of food co-ops and buying groups. The principles here being to pool buying power, thus reducing overall cost and working directly with local suppliers, supporting the local economy and reducing food miles.

Some food co-ops operate by collating orders in advance whilst others may run box schemes or sell the locally produced food via mobile stalls and outlets. Their main goals are to be an organisation run by community members for the local community on a non-profit basis.

If you are interested in finding out more about local food co-ops the following websites give further information and allow you to type in your post code to highlight what is happening in your local area:

<http://www.sustainweb.org/foodcoops/finder/>



VILLAGE PLAYERS

www.villageplayers.co.uk

Chair: Gale Scott 01206 262061

Membership: Emma Wallis 01206 271366

We had a most enjoyable Summer BBQ on September 2nd at Wiston Barn, by kind invitation of Leigh and Iris Sebba. The weather was kind, the chefs toiled unceasingly to produce excellent meats, the participants brought an array of tempting salads and puds, and best of all the company was excellent!

Rehearsals are now under way for Fire and Ice and already the talent for performance is showing itself with an especial mention for the young ones. I would remind you that performances are on November 30th evening, December 1st afternoon and evening, December 7th evening and December 8th afternoon and evening. Tickets will be available at the Post Office from mid October.

On Friday 14th September the annual North Essex Theatre Guild awards took place in Clacton. There are 43 amateur dramatic companies in this group, so competition is keen. The Players were delighted to receive a record number of nominations, 9 for Dick Turpin and 3 for Lady of Letters and Real Inspector Hound. Twenty two members attended the event and were delighted to be the recipients of two prestigious trophies.

Chrissie Cropper won the award for Best Actress in a Full Length Play for her remarkable performance in the Alan Bennett monologue Lady of Letters, and Mary Moriarty collected the Eric Dyster Cup for Best Pantomime for her production of Dick Turpin. Although several members of the cast and crew had received individual nominations, this was a fitting tribute to everyone who had worked so hard under Mary's guidance and musical direction by Mandy Cook. Congratulations to all concerned and the trophies will be displayed in the cabinet in the Village Hall.



Photo: The cast of Dick Turpin



OVER 60s CLUB

Secretary: Barbara Smith 501492

President: Eva Rolfe 263151

Unfortunately our last two meetings have had a poor attendance. Those of us that were at our meeting on September 12 were pleased to have Eva back with us.

New members would be welcome to come along and join us. We meet on the second Thursday of the month at 2.30pm in the Church Hall or contact Barbara on 501492 or Eva on 263151 or Diana on 262023.



Woodland Corner

Administrator: Caroline Keep 263054
e-mail: enquiries_wc1@btconnect.com

behind Nayland Primary School, Bear Street,
Nayland, Colchester, CO6 4HY

Playgroup Leader: Sue Clarke 263054
<http://woodlandcornernayland.blogspot.com>

Registered Charity
No. 1035330

HIGH QUALITY CHILDCARE ON YOUR DOORSTEP

"We provide high quality care for children in a safe, stimulating and fun environment. We give you peace of mind and your children a happy environment where they can flourish."

**Quality care for your child at our friendly Nayland Playgroup from 2 years
plus our very popular Breakfast and After School Club for 4-11 year olds**

PLACES

There are still Playgroup sessions available for this term and availability at most sessions for Extended Schools so don't miss out! If you have not used Woodland Corner before, please do come and visit us – we are very happy to show parents and children around, please just contact us to arrange an appointment. We are having an informal Open Afternoon on Friday 28 September from 2.30 to 4.30 pm. Please feel free to come along and see us in action!

A NEW TERM

Playgroup has welcomed 8 new children this term. We have been thinking about helping each other and the people that help us. We have also been baking delicious bread that we have shared with our families. After School Club has been enjoying the Bug Buster machine that was won by one of our children last term. The machine allows us to see just how clean (or not!) our hands are after we have washed them! We have never had so much enthusiasm for handwashing!

PLAYGROUP FUNDING

Remember there is now funding available for some children from age 2 – please contact us for more details. Funding is available for all children from the term after their 3rd birthday.

Please call: 01206 263054 or e-mail: enquiries_wc1@btconnect.com for bookings, general enquiries and information or visit our website at: <http://woodlandcornernayland.blogspot.com>



NAYLAND FIRE STATION

WC Tony Gardner Fire Station, Bear Street, Nayland

FIREFIGHTERS CAR WASH

Nayland Firefighters will be holding a car wash on the 6th of October from 10am until approximately 4pm. However, if the weather is unkind to us it may finish earlier.



1st NAYLAND SCOUTS

Scout Leader: Malcolm Macbeth 01473 827239

Some of the Scouts will be joining the Nayland archaeological dig on the weekend of 6th/7th October. We have been asked to help with a test pit on the allotment field.

Scouts meet in the scout hut on Thursdays at 7pm. (Age ten and a half to fourteen). More scouts are always welcome and we are still in need of a treasurer. Contact Scout Leader Malcolm Macbeth 01473 827239

See you with your trowel and sieve!



NAYLAND MOTHER & TODDLER GROUP

Leader: Liz Huggins 263438

First of all everyone at Nayland Mother and Toddler Group would like to welcome 2 new arrivals... Congratulations to Michelle on the birth of Harrison, a beautiful brother for Charlie, and also congratulations to Kim on the birth of Harry, a beautiful brother for Amy.

Nayland Mother and Toddler Group meet every Friday in Term time at Nayland Village Hall from 9:45 til 11:45. Its a friendly group with lots of toys for your little ones to enjoy. Tea and coffee is available to mums, dads and carers and juice and biscuits for the children. Its a great place for new mums to meet people and make friends! First visit to us is free! Then its £2.50 per mother and child(ren). Look forward to seeing you there!

There will be no group on 26th October and 2nd November as its half term week.

NAYLAND PRIMARY SCHOOL: ECO TEAM

Michaela Woollatt

With the start of the new term the Eco-team are very excited about the year ahead. Working towards the Eco-Schools Green Flag award, one of the first jobs for the team will be to carry out an environmental review of the school which will cover Energy, Waste and Biodiversity. The aim is to see if and how the school can become even more environmentally friendly and monitor and measure its progress.

To this end, in a joint venture between Nayland Primary, Rexel Senate and Transition Nayland, the school is having energy monitors installed which will be fitted into each classroom allowing the children to see how much energy each classroom is using. This will help the eco-team to look at ways of reducing overall energy use in school.

We are also excited about the start of a new afterschool nature club at school where children will get the opportunity to help look after the wildlife garden and observe nature in action over the seasons.



Nayland Youth Club

Leader: Adam White 07540 740259

Chair: Maria Mason on 01206 263471 mrs.maria.mason@gmail.com.

Nayland Youth Club meets each Tuesday during term time between 7pm and 9pm for children and young people aged 8 to 16 years. There is a charge of £2 per session and drinks, crisps and sweets are available for the young people to buy.

The club continues to attract approximately 20 young people each Tuesday and volunteers to help at sessions are needed. Training for volunteers is available.

If you would like to know more please contact the Chairperson Maria Mason on 01206 263471 or mrs.maria.mason@gmail.com.



Nayland & District Horticultural Society Spring Flower Show

on Saturday 23rd March 2013 in the Church Hall

- Classes:
1. Pot of spring bulbs, corms or tubers (other than Daffodil/Narcissus)
 2. Pot of 5 Daffodil/Narcissus bulbs any colour or variety
 3. Flower arrangement: Daffodils/Narcissus (min 12 of 1 variety, no foliage)
- moss, pebbles, etc, but not leaves, may be used to camouflage the oasis
 4. Pot miniature Daffodil/Narcissus bulbs
 5. Pot of Polyanthus or Primula (Primroses)
 6. Flowering Houseplant
 7. 3 blooms (any one variety) floating in a dish of water
 8. Flower arranging: 'Spring Fever' (max size 12" overall)
 9. Vase with 3 stems of hyacinths
 10. Vase of mixed flowers and/or flowering shrubs
 11. Vase of one kind of flowering shrub or tree
 12. Vase of 3 Tulips (any variety/varieties)
 13. Vase with 1 bloom Camellia
 14. Vase of 6 assorted Daffodil/Narcissus
 15. Vase of 6 Miniature Daffodil/Narcissus
 16. 3 specimen Daffodil/Narcissus blooms (any one variety)
 17. Rhubarb: 3 stalks, leaves trimmed, but if forced foliage should remain

This is an advance notice to enable you to plant up your entries!

More information will be available in later issues of the Community Times, or www.naylandhortsoc.org.uk or Lorraine 262807 lorraine.nayland@btinternet.com

IPSWICH SCHOOL & IPSWICH HIGH SCHOOL

Do you have a child attending either of the above schools?

If so you may be interested to know that there is a **direct bus from Nayland** to each school (the girls no longer have to travel via Ipswich School).

This is a non-profit making, parent run bus club which serves several villages including Stoke by Nayland, Thorington St, Higham and Stratford St Mary and then provides an individual service from Copdock on to each school and a similar return journey each afternoon. If there is sufficient interest an additional stop at Leavenheath could be considered.

For further details please contact Jill Badman on 01206 262994 or email jill@badman-consulting.co.uk

COFFEE MORNING

The Residents of Nayland House wanted us to write and thank those of you who made delicious cakes and provided prizes for the raffle, made yummy jams and brought books to sell for the Coffee Morning held on Saturday, 8th September in the Church Hall to raise funds for us to buy musical instruments.

We are very grateful to Hazel Gardiner whose idea it was and who put a lot of effort in getting the coffee morning organised. We would also like to thank Trevor and Margaret Smy and Mary Hussey for all their help. We had over 50 people attend on a beautiful summery day and made a wonderful profit of £270.

Thank you very much and with best wishes from Janice and Sara, Activities Co-ordinators, Nayland House.



An evening meeting and presentation for you to discover how local people have enabled Suffolk Wildlife Trust to create Arger Fen and Spouse's Vale nature reserve for the benefit of wildlife and local communities, and how you might benefit from the Trust's future efforts to extend and reconnect the nature reserve in to the surrounding landscape.

This free event starts at 7pm, Leavenheath Village Hall, Tuesday October 30th. Enquiries to Michael Strand on 01473 892427.



*Buddleia
Weyeriana*



Garden Notes

by The Old Muckspreader

A few months ago it wouldn't have seemed possible, but now we badly need some rain and the soil, especially where trodden on, is like concrete. As a result even those standbys of the season, the Michaelmas Daisies, are looking a bit sad, and can do with some help from a legally applied hose.

The OM/S was recently asked for advice on pruning a Buddleia which had finished flowering. Here are two possible courses of action:

1. It can be left as it is and then cut back hard next spring. It will then make strong new shoots with large flowers.
2. It can be pruned lightly in spring, or now if you prefer, and will then flower earlier but with smaller flowers.

The OM/S favours a Belt and Braces approach where some branches are pruned hard and some more lightly. This results in a longer flowering season, and is better for attracting butterflies. The best Buddleia for these, since it continues to flower for most of summer and autumn, is B. Weyeriana (a Hybrid of B. Davidii, the common purple one and B. Globosa, the Orange Ball Buddleia). It is rather curious, in that the buds appear to be purple, but on opening the flowers are yellow/orange.

Until this year the OM/S had never grown Sweet Peas, but having come by a few battered plants left over from the Church Fete plant stall he thought he might as well have a go. Not, however, being prepared to erect an elaborate structure, tie them in, disbud and do everything necessary for producing prize blooms for cutting, he planted eight small ones round the base of an old Viburnum Fragens, which had finished its

flowering, and apart from occasional watering let them get on with it. The result has been rather successful; no tying was needed, they climbed away and are still producing flowers; all that was needed was picking or dead-heading.

Growth on all shrubs this year has been incredible, and that means hedges too. In an abortive attempt to cut down on work we decided not to cut the Laurel hedges in spring, but to leave them until now, when they usually need a second cut anyhow. This was a grave error for in places they have made growth of nearly 5 feet, with some stems well over an inch thick, too much for shears or secateurs.

If we do get some decent rain in the next 2 months it will, once again be an opportunity for planting, moving and generally reorganising. It would be risky to gamble on another wet spring; this year was really unusual.

Finally, it's worth keeping an eye on the Sudbury Garden Centre's (formally Wyevale) bargains of cheap bulbs in a few weeks time.

WORDSEARCH: TREES

T	R	A	M	A	E	B	N	R	O	H	M	E	K	W	E
U	I	I	A	O	A	B	L	U	H	A	Z	E	L	O	U
N	C	V	W	C	N	M	J	B	P	L	P	A	J	D	N
T	H	E	B	E	H	K	V	L	S	C	I	U	E	O	R
S	Y	C	A	M	O	R	E	L	C	R	N	I	A	G	O
E	T	A	L	D	A	X	A	Y	R	I	E	L	A	M	H
H	K	H	E	T	K	R	Y	A	P	B	I	C	H	A	T
C	E	W	M	A	N	K	H	E	B	U	O	U	C	N	W
E	C	O	B	Y	E	A	R	H	R	L	Z	H	R	H	A
S	A	L	L	O	U	L	I	A	C	U	L	Z	A	S	H
R	A	L	P	O	P	Y	D	R	A	B	M	O	L	V	E
O	O	I	S	I	L	E	C	E	I	X	A	A	E	E	A
H	V	W	A	H	C	R	I	B	R	E	V	L	I	S	A

ASH
CEDAR
ELDER
HAWTHORN
HAZEL
HOLLY
HORNBEAM

HORSE CHESTNUT
JUNIPER
LARCH
LOMBARDY POPLAR
MAPLE
MONKEY PUZZLE
OAK

PINE
SILVER BIRCH
SYCAMORE
WILLOW
YEW

ANAGRAMS: TREES

- 1 CRESHVIBRIL
- 2 BURYRELM
- 3 LIKESHOANG
- 4 PLLABORPACK
- 5 STUREJADE
- 6 WILLYWUSSOP
- 7 BEERCEPHOP
- 8 CAPEBLARP
- 9 MADNOS
- 10 TESTESWETCHUN
- 11 PEWOWGLIWNILE
- 12 SPINITSEC

The words may be horizontal, vertical, or diagonal and forward or backwards

Solutions on page 37

Charles Edward Gowing

Handwritten personal accounts of everyday life in the past give us a valuable and unique insight into the way that people lived, and in Nayland we are fortunate that Charles Gowing sat down one day and wrote about his life and memories of the village in the mid-nineteenth and early twentieth centuries. His handwritten book is held in the County Record Office in Bury St Edmunds.

Charles Gowing is perhaps best remembered for his photography but he was a popular and much respected resident who played a very active part in the community during his lifetime. He was born in Nayland in 1846 and lived here all his life until he died in 1934, aged 88.

For 35 years he carried on a bakery and confectionery business in Birch Street before becoming a photographer. At the age of 11 he entered the service of the Congregational Church where his first duty was to attend to the oil lamps. He was for 50 years a Sunday School Teacher and Organist, Honorary Church Secretary and Treasurer and 50 years a Deacon. For this long service he was made a Life Deacon. He was also Librarian of the Reading Room [at what is now the Post Office], secretary and treasurer of Nayland Voluntary School. For 50 years he was Chairman of the Board School and later correspondent to several local county council schools. He was also a Parish Councillor, Charity Trustee and Clerk of the Nayland Charities - the list goes on.

Some of Charles's earliest memories were of the church and its school which closed when the school in Newlands Lane was built, where he attended until he was 12. As he was growing up he saw many industries and trades operating in the village. "I just remember the old flour mill and its being pulled down. This stood in Mill Street opposite the grocer's shop, Mr William Stammers being the proprietor. The mill race ran underneath the road, continued at the rear of the gardens in Birch Street and I well remember trying to fish with a bent pin in the garden of the cottage where our family were in residence. The new and larger mill abutting Mill and Fen Streets, was built by Mr Stammers who retired about the time the old mill fell into disuse, Mr Jeremiah Stannard being the proprietor. My father worked for each and was a flour dresser and I well remember him saying 'We have sent 1000 sacks of flour to London this week'. This was sent in barges, 3 always going to Mistley and from there to London by sailing vessels."

"In connection with the milling, Mr Stannard for a time ran a starch factory in the house next to the mill site in Fen Street. The large red brick building opposite the mill site was erected by Mr Stannard as a steam flour mill and was believed to be the first in England. I remember seeing the beam of the engine moving up and down as I went to school. In the flourishing time of country milling, Mr Stannard supplied mostly the entire district with flour. Later on and while I was in the baking and confectionery industry, there were as many as nine outside millers calling on me for an order of flour. The loss of this industry was a very great blow to the village as about 30 hands were engaged. I might add that frequently farmers' wagons, loaded with wheat, might be seen standing in Fen Street and as far as Alston Court in Town street [later renamed High Street], hailing from as far as Bildeston and intermediate districts, waiting for their turn to be unloaded at the mill."

Charles saw Leather Dressing going on at the foot of Gravel Hill which involved greasing, dyeing and shaving leather mainly for shoemakers. Mr Siggers was a Fellmonger in Birch Street, his work was tanning sheepskins for gloves, leggings and 'buskins' balls. "I with a boy companion used to help him make the balls, filling them with sawdust." (Does anyone know what buskins balls were?)

There was also a Straw Hat and Bonnet maker at the foot of Gravel Hill, a Velvet maker in Bear Street and a Barber in Birch Street. The Faiers family in Bear Street were Coopers and Skep, Hamper and Basket makers. Mr Mills was the Veterinary Surgeon in Bear Street and Mr Charles Bunn was the Chemist and Druggist in Town Street. Mr Bacon was an Ash Gatherer, the



Charles Gowing and his wife Mary Ann

wood ashes he gathered were used in soap making. The Soap Boiler and Candlemaker was Mr Winney at The Poplars in Bear Street [now Chandlers]. There were four Tailors at this time around the village and six Shoemakers. There were three Maltsters, one of whom (James Cuddon) also had a large Brewery in Church Lane, but William Barber brewed his own beer at home and at harvest time Charles Gowing said that farm workers came from Boxted for this, via a bridge over the river at the lower end of the Fens, now long gone. There were also two Watch and Clock cleaners, two Cabinet makers, a Saddler and Harness maker and at Stour House a Travelling Draper.

'Gog' Prestney was a Rock Maker in Town Street. What could this job have been?! Mr Thorpe was the Bell Man or Town Crier for the village.

One major industry in Nayland in the 1800s was Silk Winding which took place in a large building in Fen Street. Charles Gowing remembered that "For some considerable period there were just on 200 girls employed in winding silk onto the bobbins which were run by machinery. These young people were drawn from Nayland and surrounding villages. While at work they frequently enjoyed themselves in singing, often to the great amusement of the public. The Rev Williams conducted a weekly service in the large hall of the building". This business had its own gas works, the first in the village. Another gas works followed in Newlands Lane which provided gas for streetlighting.

Charles remembered that a church bell was rung at 8 o'clock in the evening during harvest time which meant that all gleaning was to cease. A church bell also rang on Sunday mornings at 8 o'clock when all work must cease on the allotment field. He described the old annual custom, which took place on 29th May, to commemorate the beheading of King Charles when local folk placed a large branch of oak at their front doors. All of these customs died out.

These days with television and technology no aspect of our lives escapes the microscope but there is still a place for personal accounts of events and everyday life. We need more people like Charles Gowing to sit down and write about their lives - what may appear mundane to us all today will be of great interest to future generations in these ever changing times.

Wendy Sparrow, Parish Recorder

Nayland Flower Show



NAYLAND WITH WISSINGTON COMMUNITY TIMES

Show day on 4th August saw a steady flow of visitors coming along to the 31st annual Flower Show. The show was dedicated to Olive Noakes who sadly died earlier that week. Olive will be missed by many in the village, especially HortSoc; she had been our Treasurer for 16 years and was a valued friend and member of the committee.

It was good to see a number of new exhibitors, taking numbers over our previous record of 48. Many of them, very happy with their successes and the good atmosphere of the day, say they look forward to returning next year.

The judges were impressed with the quality of exhibits despite the weather which never fails to provide a different challenge. This year the warm early spring brought some things on early, but the cold wet summer has not seen sufficient sunshine to ripen some produce in time for the show; but while fruit and vegetable entries were down entries in other classes increased resulting in higher entries overall than last year.

Jo Reed from Leavenheath, with 53 points, won the Creems Cup for the highest number of points in the show, ahead of Hazel Gardiner on 39 points and Trevor Smy on 31 points.

Section 1 (Open) Vegetables – (1st, 2nd, 3rd)

Five potatoes, white	Trevor Smy, Rob Sherriff, Jo Reed
Five potatoes, colour	Jo Reed, Trevor Smy, Andrew Gowen,
Five carrots	Sheila Wildish, Jackie Grant, -
Five carrots, short	Jackie Grant, Robert Freeth, -
Three beetroot	Rob Sherriff, Trevor Smy, John Middleditch
Six runner beans	Trevor Smy, Jo Reed, Will Hitchcock
Six French beans	Jo Reed, Trevor Smy, John Middleditch
Five onions, seed	Trevor Smy, Sheila Wildish, Jo Reed
Five onions, sets	Jo Reed, Trevor Smy, Hazel Gardiner
Nine shallots	Sheila Wildish, Trevor Smy, Rob Sherriff,
Two cabbage lettuce	<i>no entries</i>
Two cos lettuce	<i>no entries</i>
Two marrows	Sylvia Bond, -
Two cabbages	Rob Sherriff, Will Hitchcock, John Middleditch
Three courgettes	Jo Reed, Mike Hunter, Robert Freeth
Four tomatoes	<i>no entries</i>
Six tomatoes, small	Jo Reed, -
Cucumbers, ridge	Trevor Smy, Jo Reed, -
Cucumbers, frame	Rob Sherriff, Jo Reed, -
Any other vegetable	Hazel Gardiner, Tom Gardiner, Trevor Smy
Longest Runner Bean	Trevor Smy, Robert Freeth, Andrew Gowen,
Vegetable collection	Trevor Smy, -

Section 2 (Open) Fruit

Dish of soft fruit	Jo Reed, John Middleditch, Sheila Wildish
Dish of stone fruit	-, -, Jenny Smith
Dish of four apples	Colin Ramsell, Jo Reed, -
Any other fruit	Jo Reed, -
Fruit collection	Jo Reed, -

Flowers

Roses, 3 hybrid tea	Mary Husey, -
Roses, 1 specimen	Mary Hussey, Barry Wakefield, Jenny Smith
Roses, floribunda	Mary Hussey, -, Pinkle Werner
Single rose, for scent	Rob Sherriff, Jenny Smith, Lorraine Brooks
Perennials	Sheila Sessions, Lorraine Brooks, Vivien Turnbull
Annuals, 3 varieties	<i>no entries</i>
Annuals, 1 variety	Sylvia Bond, Jenny Smith, Hazel Gardiner
Pot plant, non-flowering	Lorraine Brooks, Barry Wakefield, -
Pot plant, flowering	Lorraine Brooks, Jean Evans, Jenny Smith
Fuchsia, bush	Lorraine Brooks, Jenny Smith, -
Sweet Peas	Sylvia Bond, Jenny Smith, Margaret Smy
Gladioli	Rob Sherriff, Frances Bates, Jackie Grant
Asters	Margaret Smy, -
Cactus or succulent	Mig Knight, Sheila Sessions, Penny Allen

CUP WINNERS

BERT HALLS MEMORIAL CUP - Trevor Smy

Highest points in Section 1 Vegetables (resident)

KENT BLAXILL CUP - Jo Reed

Highest points in Section 1 Vegetables (non-resident)

GEORGE GARDINER CUP - Trevor Smy

Best collection of vegetables

OLIVE WILLINGALE CUP - Lorraine Brooks

Highest points in Section 3 Flowers

WILLIAMS & GRIFFIN ROSE BOWL -

Barry Wakefield

Highest points in Section 5 Flower arranging

NORAH OWEN CUP - Rob Sherriff

Best Dahlia in show

JOHN OAKES CUP - Hazel Gardiner

Highest points in Section 6 Cookery

PETER SINGLETON TROPHY - Mary Hussey

Best rose in show

ELLEN DAWE CUP - Mike Hunter

Best photograph in Section 10 Photography

HUSSEY CUP - Rob Sherriff

Best Scented Rose in show

JOHN DYBLE MEMORIAL CUP - Lorraine Brooks

Best Fuchsia in show

KERRIDGE CUP - John Middleditch

Biggest home-grown disaster in the show

RHS BANKSIAN MEDAL - Rob Sherriff

Highest number of points in horticultural classes

CREEMS CUP - Jo Reed

Highest number of points in the show

SPENCER FAMILY CUP - The Gladwell Family

Highest number of points in the family section

GENT CUP - Edie Hughes

Highest number of points in the children's 8 & under section

SAWYER CUP - Laura Gladwell

Highest number of points in the children's 9-14 section

The competitions for best scarecrow and best hanging basket received some creative entries. The Gladwell family's scarecrow was the winner, followed by the Hitchcock family and Woodland Corner. Leo Baker won the hanging basket competition, ahead of Lorraine Brooks second and Sylvia Bond.

Prizes were presented to the winners of the Parish Council's best kept allotments competition, which was won by Trevor Smy, followed by Hazel Gardiner and Mike Hunter.

Our thanks go to Terry Bannister, who very kindly came along to present the trophies and to all our judges for returning once again. We are also grateful to all those who helped set up and dismantle the displays, Hazel Gardiner and Denise Drury for providing the teas, Anne Spencer, Colin Ramsell, Sheila Sessions and Pauline Horrell for manning the door and produce stall, Jo and Gareth Gipp for manning the raffle, the committee for their organisation skills and of course all the entrants who take the time and effort to take part and those coming along to support the show.

Dahlias

Cactus	Rob Sherriff, Jenny Smith, -
Ball or pom-pom	Rob Sherriff, Jenny Smith, -
Decorative blooms	Rob Sherriff, Sylvia Bond, Jenny Smith
Any varieties	Rob Sherriff, Hazel Gardiner, Barry Wakefield
Collection of veg, fruit & flowers	Jo Reed, Hazel Gardiner, -

Floral Arrangements

Small arrangement	Barry Wakefield, Anna Mann, Vivien Turnbull
Candlestick	Peggy Shreeve, Barry Wakefield, Pinkle Werner
Unusual container	Hazel Gardiner, Penny Allen, Elizabeth Wakefield
Herbs	Frances Bates, Susan Gowen & Mary Hussey, Jenny Smith
Dried flowers	- , Barry Wakefield
Foliage	Hazel Gardiner, Elizabeth Wakefield, Mary Hussey

Cookery

Marmalade	Jo Reed, Hazel Gardiner, Sheila Wildish
Jam	Frances Bates, Sheila Wildish, Jackie Grant
Fruit jelly	Hazel Gardiner, Jo Reed, Mig Knight
Chutney	Sheila Wildish, Hazel Gardiner, Julie Wooding
Boiled fruit cake	Jackie Grant, Emma Bishon, Claire Buller
Cherry/almond cake	Robert Watson, Jo Reed, Jackie Grant
Chocolate Sponge	Hazel Gardiner, Robert Watson, Sheila Sessions
Biscuits	Hazel Gardiner, Sheila Wildish, Mig Knight
Jam tarts	Mig Knight, Jo Reed, Emma Bishon
Home-made sweets	Jo Reed, Hazel Gardiner, -
Cheese scones	Elizabeth Wakefield, Mary Boreham, Peter Mann
White loaf	Tom Gardiner, Jo Reed, -
Naughty but nice	Hazel Gardiner, Sheila Wildish, Ann Channon

Crafts

Hand-knitting	Mig Knight, Jeannette Finch, -
Stitchcraft	Sheila Wildish, Elizabeth Wakefield, Penny Allen
Greeting card	Vivien Turnbull, Emma Gladwell, Hazel Gardiner
Drawing / painting	Vivien Turnbull, Sheila Sessions, Penny Allen

Photography

'Feature of Your Garden'	Mike Hunter, Lorraine Brooks, Jenny Smith
'Signs of Ageing'	Hazel Gardiner, <i>no further placings</i>

Fruit Liqueur

Julie Wooding, Trevor Smy, Sheila Wildish

Home Grown Disasters John Middleditch, Hazel Gardiner, Frances Bates

Family & Children's Section

Family Collage

The Gladwell Family, -

8 years & under

'I grew this myself':	Jacob Woollatt, Samuel Woollatt, -
Cardboard creation:	Evie Hughes, James Maguire, -
Jar named wild flowers:	<i>No entries</i>
Decorated Cresshead:	<i>No entries</i>
Digital invitation:	<i>No entries</i>
Decorated Fairy Cakes:	Chloe Hitchcock, Evie Hughes

9 – 14 years

'I grew this myself':	Sarah Gladwell, Laura Gladwell, -
Cardboard creation:	Laura Gladwell, Sarah Gladwell, -
Jar named wild flowers:	Laura Gladwell, Sarah Gladwell, -
Decorated Cresshead:	Laura Gladwell, Sarah Gladwell, -
Digital invitation:	<i>No entries</i>
Photo: 'Garden Feature'	Sarah Gladwell, Laura Gladwell, Rosie Maguire



OLIVE NOAKES

Known for her love of flowers and exceptional arranging skills, Olive Noakes, of Wiston Road, Nayland, died on July 31.

Mrs Noakes, who "lived life to the full," had been responsible for the floral decorations in St James's Church for 18 years. She not only organised the weekly flowers and those for church festivals but created arrangements for marriages and funerals making those events special.

A non-driver, she was a familiar sight in the village as she cycled to and from the church every day to check the flowers were in top condition.

Her efforts were acknowledged when she received a Babergh Community Achievement Award in 2009 after being nominated by the Community Council.

A dedicated committee member of Nayland and District Horticultural Society which she joined in the mid-80s, Mrs Noakes was treasurer for 16 years until 2007. She also belonged to the WI and swam regularly at Peake Fitness, Stoke by Nayland, to keep herself fit.

Her family said: "She loved being part of the village community and involved with things. The church was so important to her and she enjoyed every moment of her life. She was a great example of energy and enthusiasm, of faithfulness, tact and meticulous care."

Born and brought up in Ipswich, Mrs Noakes came to Nayland with her husband John about 45 years ago and the couple lived in several properties before moving to Wiston Road in 1986.

She leaves her husband, two daughters and a son, ten grandchildren and eight great-grandchildren.

A large congregation attended a thanksgiving service for Mrs Noakes's life at St James's Church on August 15.

In his address the Rev Adrian Mason described her as a very unassuming person who "brought real joy, beauty and creativity" to the community and would be missed by many on many levels.

She belonged to several village organisations but flowers were her greatest love and she had recently masterminded those for the Jubilee celebration.

He added he would miss her daily visits to the church to keep an eye on the flowers and thanked all those who had created the arrangements for the service to celebrate her life.

The service was followed by a private cremation.

Photos from top: at the Flower Festival in St James' Church 2010 with Trevor Smy & Hazel Gardiner; presentation at the Flower Show 2008 following her retirement as Treasurer of HortSoc with Joan Moore retiring Secretary, Olive receiving her Babergh Achievement Award 2009

OLIVE'S THOUGHTS

(attributed to a 17th century nun's prayer)

Lord, Thou knowest better than I know myself that I am growing older and crustier keep me from the fatal habit of thinking I must say something on every subject and on every occasion.

Release me from craving to straighten out everyone's affairs.

Make me thoughtful, but not moody: helpful but not bossy.

With my vast store of wisdom, it seems a pity not to use it all, but Thou knowest, Lord, that I shall need a few friends at the end.

Keep my mind free from recital of endless details and give me wings to come to the point. Seal my lips on my aches and pains; they are of no interest to others: and the love of rehearsing them becomes to me sweeter than honey as the years go by.

Grant me a lessening cock-sureness when my memory conflicts with the memory of others and teach me the glorious lesson that occasionally, I may be mistaken.

Keep me reasonably sweet, I do not want to be a saint, for saints are hard to live with: but a sour old person is the crowning accomplishment of the Devil.

Grant that I may see good in others and when I do, give me the grace to say so.



SaferNeighbourhoods

Making a difference... together

Welcome to this month's Police news item.

Suffolk Police is reminding people in Babergh to check their security after a recent spate of burglaries in the Babergh area. A number of different things are being stolen from houses, attached garages and side porches, items that have been stolen range from high value and amounts of jewellery, electrical items such as laptops, Ipads, Ipods, power tools, bikes to sweets.

Since the beginning of the year there have been 42 Dwelling Burglaries with in the Babergh East area compared to 59 last year. The reason I bring this to your attention is to try and prevent you becoming one of the statistics.

Many of the burglaries could have been prevented if a few simple steps to secure the property had been made. Police are urging all homeowners to take simple precautions in order to minimize the chances of homes being targeted. By leaving your home unlocked - during the day or night - and not checking your car is locked you make life easy for criminals. Breaking into a home or car often creates noise, usually takes longer and carries the risk of injury to the offender. It also increases the chances of them being caught, either in the act or through forensic traces.

The misery and distress caused by burglars cannot be underestimated. We are committed to finding those responsible and putting them before the courts.

Locking doors and windows is just one of the simple steps you can take to reduce the likelihood of being targeted by opportunist burglars and thieves.

Other things you can do include:

- Record serial numbers of valuable items and take photographs of them. This helps police to identify the items if they are recovered and can help prove cases of burglary, theft and handling stolen goods.
- Property mark your postcode onto all valuable items with a permanent marker, UV pen or with a property marking solution from companies such as Smartwater, SelectaDNA or Crimestoppers - digital cameras, videos, DVDs, camcorders, mobile phones, etc, can all be marked in this way.
- With the dark nights approaching make it look as though someone is home. Put your lights on timers, put a radio on

a talk station - both can make it appear as though more than one person is home and therefore makes your home a less appealing prospect for a burglar.

- Remember to lock all outbuildings. Shed alarms, along with property marking pens, can be purchased quite cheaply from all police stations and can provide a highly audible warning that can alert you to any break-in and make it uncomfortable for the burglar to continue.

- Consider installing obvious security measures - CCTV, alarms, security lighting can be effective deterrents and don't have to cost a fortune.

Anyone who would like more advice on protecting their home, vehicle and other property can contact their local Crime Reduction Officer at Suffolk Police by calling 101.

Police are also asking that you call if you see anyone acting suspiciously. Please try to note the description of the person you are suspicious of, including clothing, and then contact police immediately using 999.

Mandy, PCSO 3108 Coleman

BONFIRES



If you choose to have a bonfire please adhere to the guidelines:

- Check with your neighbours that it won't be a nuisance
- Avoid burning at weekends and on bank holidays when your neighbours have a right to enjoy their gardens
- Do not light a fire when weather conditions will cause problems. It is mistakenly thought that the evening is the best time for a bonfire; wrong, the atmospheric pressure keeps the smoke down. Also, don't light them while the weather is still and cold.

There is no law saying that bonfires are illegal. However, smoke and emissions from a bonfire (or any other process of burning) can be considered a Statutory Nuisance and as such can be dealt with under the Environmental Protection Act 1990. Environmental Health is responsible for investigating complaints.

The Annual
**CANDLELIT
CAROL SERVICE**

St James Church
Sunday 23rd December
at 6.30pm

Following the candlelit Service,
with traditional Carols and Lessons,
enjoy a glass of wine
and a mince pie
before the journey home!

**CAROLS AROUND
THE VILLAGE
CHRISTMAS TREE**

Wednesday 19th December
at 7.30pm
with Boxted Silver Band



CHURCH SERVICES: OCTOBER & NOVEMBER 2012

Nayland, Wiston, Leavenheath, Stoke by Nayland & Polstead

<i>Date</i>	<i>Time</i>	<i>Venue</i>	<i>Service</i>	<i>Priest / Leader</i>	<i>Time</i>	<i>Venue</i>	<i>Service</i>	<i>Priest / Leader</i>
7th October <i>Trinity 18</i>	8.00am	Stoke	HC 2	Revd Adrian Mason	11.00am	Polstead	MW	Revd Jackie Sephton
	9.30 am	Nayland	PC	Revd Adrian Mason	11.00am	Wiston	HC	Revd Adrian Mason
	10.00 am	Leavenheath	First Sunday	Revd Val Armstrong	6.30pm	Stoke	EP	Revd Jackie Sephton
14th October <i>Trinity 19</i>	9.30am	Leavenheath	MP	Mr David Rowe	11.00am	Stoke	Harvest MP	Revd Val Armstrong
	9.30am	Nayland	Harvest FC	Revd Adrian Mason	6.30pm	Nayland	Harvest EP	Revd Val Armstrong
	11.00am	Polstead	HC2	Revd Adrian Mason				
21st October <i>Trinity 20</i>	8.00am	Polstead	HC2	Revd Val Armstrong	11.00am	Polstead	FS	Revd Jackie Sephton
	9.30am	Leavenheath	HC2	Revd Jackie Sephton	11.00am	Stoke	HC1	Revd Val Armstrong
	9.30am	Nayland	PC	Revd Val Armstrong	11.00am	Wiston	HC (ext)	Mr David Pryor
					6.30pm	Leavenheath	Evening Praise	Revd Jackie Sephton
28th October <i>Ss Simon and Jude</i>	8.00am	Nayland	HC2	Revd Adrian Mason	11.00am	Polstead	HC1	Revd Jackie Sephton
	9.30am	Leavenheath	HC1	Revd Adrian Mason	11.00am	Stoke	HC2	Revd Adrian Mason
	9.30am	Nayland	MP	Revd Jackie Sephton	5.30pm	Wiston	EP	Mr David Pryor
4th November <i>4 before Ad-vent</i>	8.00am	Stoke	HC 2	Revd Adrian Mason	11.00am	Polstead	MW	Revd Jackie Sephton
	9.30am	Nayland	PC	Revd Adrian Mason	11.00am	Wiston	HC	Revd Adrian Mason
	10.00am	Leavenheath	First Sunday	Revd Val Armstrong	3.00 pm	Stoke	All Souls	Revd Val Armstrong
11th November <i>Remembrance Sunday</i>	9.30am	Leavenheath	Remembrance	Mr David Rowe	10.45am	Polstead	Remembrance	Revd Val Armstrong
	10.00am	Wiston	Remembrance	Revd Val Armsrtong	4.00pm	Nayland	EP + HC	Revd Adrian Mason
	10.45am	Nayland	Remembrance	Revd Adrian Mason				
18th November <i>2 before Ad-vent</i>	8.00am	Polstead	HC2	Revd Adrian Mason	11.00am	Polstead	FS	Mr Jim Sephton
	9.30am	Leavenheath	HC2	Revd Val Armstrong	11.00am	Stoke	HC1	Revd Adrian Mason
	9.30am	Nayland	PC	Revd Adrian Mason	11.00am	Wiston	HC	Revd Val Armstrong
					6.30pm	Leavenheath	Evening Praise	Revd Adrian Mason
25th November <i>Christ the King</i>	8.00am	Nayland	HC2	Revd Adrian Mason	11.00am	Polstead	HC1	Revd Jackie Sephton
	9.30am	Leavenheath	HC1	Revd Jackie Sephton	11.00am	Stoke	HC2	Revd Adrian Mason
	9.30am	Nayland	MP	Mr David Pryor	5.30pm	Wiston	EP	Revd Adrian Mason
2nd December <i>First Sunday in Advent</i>	8.00am	Stoke	HC 2	Revd Jackie Sephton	11.00am	Polstead	MW	Revd Jackie Sephton
	9.30am	Nayland	PC	Revd Adrian Mason	11.00am	Wiston	HC	Revd Adrian Mason
	10.00am	Leavenheath	First Sunday	Revd Val Armstrong	6.30pm	Stoke	EP	Revd Adrian Mason

Key: FS : Family Service, HC 1 / 2 : Holy Communion 1 or 2 , PC : Parish Communion, FC : Family Communion, MP : Morning Prayer, MW : Morning Worship, EP : Evening Prayer, B : Baptism, *Worship leaders are subject to change.*

Weekday Services and Groups

Bible Study	18 Laburnum Way (<i>Rita Dibble 262580</i>): Mondays 7.30pm 1 st & 15 th October, 5 th & 19 th November & 3 rd December
LAPS Group	18 Laburnum Way (<i>Rita Dibble 262580</i>): 7.30pm Monday 12 th November
Parkers Way	Communion: Tuesdays 10.15am 16 th October & 20 th November (<i>3rd Tuesday of month</i>)
Parkers Way	Prayer & Praise Service: Wednesdays 3pm 3 rd October, 7 th November & 5 th December (<i>1st Wednesday of month</i>)
Nayland House	Holy Communion: Every Wednesday 10.45am
Pram & Toddler Service	St. James Church: 2.00 pm 12 th October, 9 th November (<i>2nd Thursday of month - Rachel Hitchcock 263169</i>)



HARVEST FESTIVALS

This year's Harvest Festival at St. James falls on Sunday 14th October.
The service is at 9.30am.

Wiston's Harvest Festival will be in St. Mary's Church on 30th September,
starting at 5.30pm and followed by refreshments.

FROM THE REGISTERS



FUNERAL
Olive Noakes

BAPTISM
Laila Natalie Ghani

**Dear all**

For those of you who have read this far, I wonder what you are expecting. What would you like to see in the Vicar's "Dear All"?

I have to confess that I once wrote a completely spoof letter for a similar journal in another place. I was not convinced that anybody ever read it! One person asked me if it was a spoof and then the next month when I confessed two other people said they had wondered.

So what do you expect? Maybe a little scholarly insight into some part of the bible? Maybe a reflection on something that has happened or will happen? Maybe some teasing out of a deep theological argument such as how many angels one could balance on the point of a pin.

If you have strong feelings please do let me know.

In the meantime....

The Olympics and Paralympics have come to a close. As a non sports person, I thought I would not enjoy all that this would bring us. However, I have been drawn into all the happenings and have been thrilled by our teams' performances and achievements. I have been thrilled with more than that. The whole of the overall event was spectacular. We have put on a really good show – the opening and closing ceremonies – loads of volunteers – a peaceful outing for our armed forces. Above all there seems to have been a sort of uniting and healing of our nation at a time when things are tough for many people.

Thank God.

We live in times when the world can seem a rather manic and tough place in which to be. Life can seem meaningless and fruitless. As an old song put it "we continue to continue" and for what purpose.

I believe wholeheartedly that we do have a purpose. I believe that God puts us here for a reason.

As we leave the rather manic summer behind, we move into a period which can be very reflective. We have some times of remembrance coming up. After Halloween (All Hallows' Eve) we have All Saints and All Souls days in the church's calendar. These are times when we remember famous and personal people who have gone before and may have shaped our lives. Later in November we have Remembrance Sunday when we remember our war dead and think of our armed services. Even the Autumn weather can I feel make us reflective.

So let's take a little time out if we can. Let's remember. Let's give thanks for many good things that happen. Let's ponder (positively) the meaning of life and our part in it. Let's rejoice in our creation. Let's thank the God in whom we believe for it all.

With Every blessing,

WANTED: Reps for Fairtrade and Christian Aid

The people who have previously co-ordinated our activities for these two charities have retired and we need one or two people to take their places.

The job is not onerous, but each charity does have a burst of activity once each year. If you feel you could help with this please contact Fr. Adrian on 01206 263471 or email fr.adrian.mason@gmail.com.

Flowers in St James' Church Nayland

Would you like to help with Church flower arranging ?

Find out how at a Coffee Morning on 5th October
at 10.30am in St James' Church, Nayland

More details from Hazel Gardiner 01206 262582

CHURCH CONTACT DETAILS ON PAGE 38

Weekday Services

<u>Monday</u>		
Morning Prayer	9.00 am	Nayland
Evening Prayer	5.00 pm	Nayland
<u>Tuesday</u>		
Morning Prayer	8.30 am	Nayland
Evening Prayer	5.00 pm	Nayland
<u>Wednesday</u>		
Morning Prayer	9.00 am	Polstead
Evening Prayer	5.00 pm	Nayland
<u>Thursday</u>		
Morning Prayer	9.00 am	Stoke
Evening Prayer	5.00 pm	Nayland

Dates for your Diary

Sunday 30 th September	Harvest Festival: St. Mary's Wiston: at 5.30pm <i>[see page 36]</i>
Friday 12 th October	HARVEST SUPPER at 7pm for 7.30pm Nayland Village Hall <i>[see page 13]</i>
Saturday 13 th October	Jamboree 10am Carvers Barn
	Fairtrade Coffee Morning 10am Church Hall <i>Have a morning out. Stock up on preserves and pickles. Buy those presents for Christmas. Support the Friends of St James and Fairtrade. All in one go. [see page 18]</i>
Sunday 14 th October	Harvest Festival: St. James Nayland: at 9.30am <i>[see page 36]</i>
Saturday 27 th October	Churchyard Gardening Party at St James' Church 9am onwards <i>[see page 18]</i>
Wednesday 31 st October	Philomel ensemble: Awake! Awake! O England! 7.30pm St James Church <i>page 36</i>
Sunday 4 th November	Service for All Souls : The special service this year is in St. Mary Church, Stoke, at 3.00 pm <i>During the service we mention the names of all those who have died in our parishes during the last year or so, together with any others you would like included. For this purpose there will be lists in all churches. Please enter clearly the names of your loved ones and we will include them, whether or not you are able to attend the service. After the service there will be the opportunity for a cup of tea and a chat. Please let someone know if you will need a lift, and tell others about this service.</i>

Awake! Awake! O England!

Ballads & dances from Shakespeare's plays
& Playford's 'English Dancing Master'

Philomel

Philip Thorby, Emma Murphy,
David Hatcher and Alison Kinder
(recorders, viols, voice, crumhorns)
with Stewart McCoy (lute, guitar)

St James Church Nayland
High Street, Nayland, Suffolk, CO6 4JE
Wednesday October 31st
7.30pm

un-ticketed, retiring collection will be taken, please book on
07949 511619 or philomelensemble@gmail.com or on the door
www.philomel.moonfruit.co.uk



Awake! Awake! O England!

In 2012, the year of the London Olympics and the Queen's Diamond Jubilee, *Awake! Awake! O England!* joins in the patriotic spirit and celebrates all things English, with ballads and dances from the plays of Shakespeare, Playford dance tunes from the 'English Dancing Master', and consorts by some of the Royal court's most well known composers. Philomel designed this programme for the Royal Greenwich International Early Music Festival in London, where they will be performing in November. Their concert in Nayland will be the first chance to hear it!

Philomel is a new ensemble bringing together some of the country's leading performers of Renaissance music. Their diverse range of expertise allows them to enjoy the full richness of Renaissance repertoire, sacred and secular, popular and courtly, refined and rowdy! The diversity of Philomel's members means that programmes include viol consorts and consort songs, recorder consorts, and a great variety of broken consorts including crumhorns, racket, bagpipes, Renaissance violin and harp.

FOUND

OLD BLACK & WHITE WEDDING PHOTOGRAPH

Found at the Morning Market in the Church Hall on 26th May, an old black and white photograph taken at a wedding. A note on the reverse states "I think Dad was rolling a cigarette".
Contact Lorraine on 262807



Do you know
anyone who plays
an outstanding
part in their local
community or school?

If so
did you know you
can nominate them
for an award?

There are four categories of awards:

- outstanding contribution made by a young person or group of young people 18 years or under
- selfless service by an individual (over 18) to a voluntary body or to the community
- voluntary or community group that improves the quality of life for residents in our district
- outstanding business contribution to the well-being of the community

Nominations should be submitted via Parish Councils, Schools, Community Councils, and other recognised community/voluntary organisations. Nomination Forms are available at:
<http://www.babergh.gov.uk/your-community/babergh-community-achievement-awards-scheme/>
The closing date is 30th November.



While fireworks can be great fun for many they can cause distress to the elderly and to animals.

The biggest problem is not knowing when fireworks are going to be let off, and the loud noise from the fireworks. If a warning is given it allows opportunity to administer tranquillising drugs to minimise an animal's trauma – obviously once the fireworks have begun it is too late. So please consider buying the less noisy fireworks, and inform as many people as possible of your display.



ASSINGTON MILL NEWSLETTER

Rural Skills and Craft Courses

Our new brochure is out now and covers courses until May 2013. Have a look at the website, www.assingtonmill.com, where you will see all the courses on offer at present in much greater detail, plus potted biographies for the tutors.

New topics in the programme are:

- **The craft of the landscape painter**, with professional artist Roy Connelly (see more about his work online).
- **Hunting with Harris Hawks**, an unusual course for only six people. With one Harris hawk between two people, you will walk the fields and woodlands and see what the birds can find.
- **The night sky for beginners**, with Julie Franklin. Here at Assington Mill there is very little light pollution so, barring fog, you should have a good evening.
- **Dipped candle-making from beeswax**, with Clive de Bruyn, who is well-known in bee-keeping circles and advises people all over the world on how to get added value from keeping bees.
- **How to start a new business** with management consultant John Lawrence.
- **Bridge without fear** with Mike Taylor, who plays competitively but aims to encourage beginners to take up the game.
- **Picture framing – an introduction** with Glyn Jones. From being a keen photographer, Glyn decided to do his own framing as well.
- **Blacksmithing** with Nigel Barnett. You will learn the principles of the craft and come away with a small item that you will have made during the day.

We are now on Facebook, which may suit some of our students. Looking forward to seeing you in the forthcoming year.

Anne Holden, 01787 229955 info@assingtonmill.com



News from the Dedham Vale AONB and Stour Valley Project

Project staff continue to seek to 'conserve and enhance' the landscape in the Stour Valley.

The Partnership that oversees the work of the Project staff took a strong view on National Grid's proposals for strengthening the overhead power lines across the AONB and the recent planning application for the 'Visitor Centre at Horkesley Park'.

Project staff have been active on wildlife projects and we are delighted to say that 48 barn owl chicks have hatched in our boxes throughout the Stour Valley.

Our work on Non Native Invasive Plant species continues following the successful removal of Giant Hogweed and Himalayan Balsam in three locations and we will shortly be recruiting volunteers to help us with further surveys before targeting more areas for the removal of similar species.

Our Heritage Lottery Funded Managing a Masterpiece scheme continues to engage many people including the archaeological test pitting project in Nayland and the exhibition of panoramic photographs taken from the top of church towers that recently visited the church.

For more information on what the Project is doing in the Stour Valley see our website at www.dedhamvalestourvalley.org

NAYLAND TEST PIT DIG by Pat Bray



Nayland residents have been urged to take part in a community archaeological project designed to discover more about the village's early history.

Dr Carenza Lewis, originally from Channel 4's *Time Team*, is leading the event and gave full details at a well-attended meeting in the village hall on September 4.

She said she hoped to have at least 25 sites for test pits and after the meeting 31 had been offered.

"The idea is to get as many people as possible to dig one metre square excavations," she explained. "Then they dig down 1.2 metres in a series of 10 centimetre layers. The excavated spoil is sieved and any finds will be identified and dated."

She stressed the age of a house was no indicator of what might be found in its garden.

Digs have already taken place at Long Melford and Clare where there were 33 pits.

The project is planned for October 5-7 and Dr Lewis's team will be on hand to guide diggers as they work. Sites include two at the primary school, the allotments, Court Knoll and private gardens.

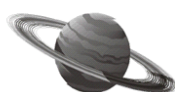
All the finds will be displayed at a tea party in Carvers' Barn on October 7.

John Constable, R.A - Altarpiece Sketch Postcards

Postcards of an original sketch by John Constable have been produced by the Conservation Society. The subject is a pencil drawing showing the reredos (decorated stone screen behind the altar) at St. James Church, Nayland indicating how the proposed altarpiece might look in situ.

It is inscribed 'Pray turn your Mind to some good subject soon' - a reference to the difficulty Constable encountered in deciding on a subject matter for the painting.

Postcards of the sketch are available at Forget Me Not or from the Hon. Secretary at 12 Mill Street, Nayland. Cost 40p each or 10 for £3.50.



SOUND & VISION UK

T.V. • SATELLITE • MULTI ROOM SOUND SYSTEMS • ELECTRONIC DOOR ENTRY



Sound & Vision UK Ltd
are specialised in digital TV aerial,
satellite systems, installations.

From Domestic to communal.

Reliable & trustworthy engineers
with the best quality.

For a free quotation call our team
Tel: 01206 262951/Fax: 01206 262953
Email: soundvisionukltd@aol.com

Steve Spalding Painter and Decorator



Exterior and interior painting undertaken.

Also, pressure cleaning of decking, paths,
driveways, patios etc.

For a professional and friendly service,
please call:

01473 429026 / 07988 981811



Be home soon

- Chartered Surveyors
- Estate Agents and Valuers
- Property Letting & Management

Colchester Tel: 01206 762244

Sudbury Tel: 01787 883700

Other Offices:
Frinton, Braintree, Kelvedon, & Ipswich.

www.boydens.co.uk



There.

When you need legal
and financial advice



T: 01206 217300
WWW.BIRKETTLONG.CO.UK

Authorised and regulated by the Solicitors Regulation Authority (Authorisation No: 488404)
Authorised and regulated by the Financial Services Authority (Authorisation No: 481245)

Jane Walker, Independent Safari Consultant

www.woodbridgesafaris.co.uk / www.horsebacksafaris.co.uk

01206 262352, jane@woodbridgesafaris.co.uk

Farthing Hall, Nayland with Wissington



Photographic, walking and bird-watching. Horse-riding a speciality. Bookings ATOL / AITO bonded.



GENERAL MAINTENANCE & CARPENTRY



Over 20 years Experience
Quality Work from Local Builder

Contact: Jane Matthews
Tel: 01206 262117 9am-5pm
or E-Mail: jmatthews@svcarpentry.co.uk

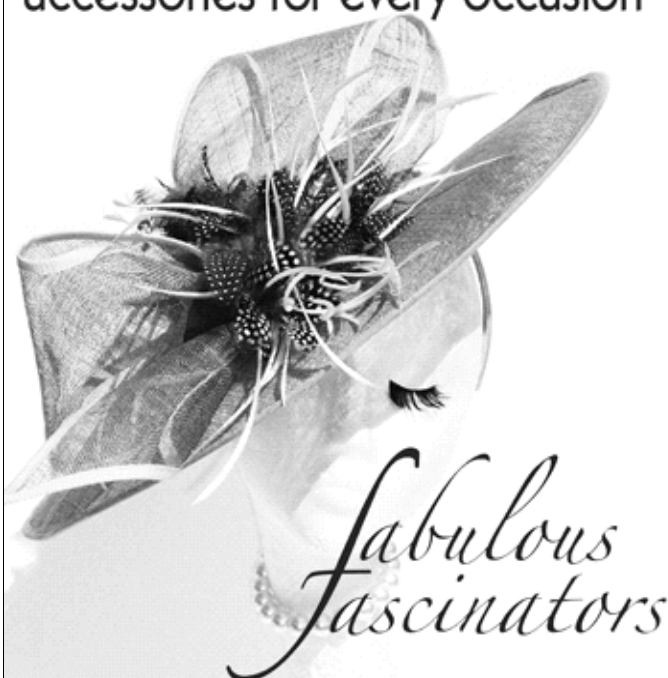


Stour Valley Carpentry

Stour Valley Carpentry
Unit 4, Nags Corner,
Nayland, Colchester,
Essex CO6 4LT

Tel: 01206 262117
Fax: 01206 263744

Bespoke headware and
accessories for every occasion



Fabulous Fascinators
07850 571879/01206 262391
www.fabulousfascinators.co.uk
mam@maryannemorrison.co.uk

Matthew Douglas

Independent Financial Advisers

*Do you need your savings to work harder?
Is your income sustainable for the long term?
Are your assets risk controlled?
Are they tax efficient?
Would you like some confidential advice?*

"Money matters made Simple"

Telephone, e-mail or just drop in to arrange a free,
no obligation consultation with a professionally
qualified independent adviser.

**4 Church Mews
High Street
Nayland CO6 4JF**

Telephone: 01206 265904
Email: info@matthewdouglas.co.uk
Website: www.matthewdouglas.co.uk

Matthew Douglas Limited is authorised and
regulated by the Financial Services Authority.





Member No. G033



MAKE IT A GOOD MOVE



ASK US FOR ADVICE ON MOVING

- UK door to door
- Storage services
- Commercial archive storage
- European door to door
- Commercial office moves
- Packing materials included

Good Move Removals & Storage

Unit 1, Holly Lodge, Holly Lane, Great Horkesley, Colchester CO6 4AW

Colchester 01206 272780

Ipswich 01473 288110

Email guy@goodmove.org.uk Website www.goodmove.org.uk

Fresh 'n' Easy

Your local specialist for all types of

Carpet, Upholstery & Leather Cleaning

Call for a free no obligation quote

- Professional fully trained technician
- Stain/soil removal & protection for carpet, upholstery, rugs & leather
- Weekend & evening appointments available
- Courteous service
- Fully insured
- Competitive prices

phone: 01206 842458

mobile: 07814 576252

www.fresh-n-easy.co.uk

4 Cuckoo Cottages, Boxted Road, CO4 5HH



Ian Harris Ltd

design and building services

We are an established Suffolk building company with many years experience working on country houses and cottages

DESIGN AND PLANNING

We will discuss your requirements, design and prepare drawings for Planning and Listed Building applications.

GENERAL BUILDING

We undertake all aspects of general building to include new build, conversions, extensions, alterations and maintenance. Our speciality is for carrying out work to all types of period buildings with a particular understanding of the needs of historic and Listed Buildings.

JOINERY

We have our own joinery workshop working alongside the general building works designing, making and fitting purpose-made joinery such as windows, doors, stairs, frames and fitted furniture for any part of the house.

Contact us by phoning on:

01206 263632

Or e-mail us on ian@ianharris.ltd.uk

Champions Hill Barn, Wissington, Nayland CO6 4NL



QualitySolicitors
FJG

For whatever life brings

- Academy Services
- Accident and Injury
- Agricultural and Rural
- Civil and Commercial Litigation
- Collaborative Law and Mediation
- Commercial and Commercial Property
- Crime
- Debt Collection
- Education
- Employment and Immigration
- Equity Release
- Family Law
- Wills / Probate / Inheritance Tax

t: 0845 543 5700

www.qsfjg.co.uk

Offices in Central London and throughout Essex
follow us on twitter @fjgsolicitors

SMALL ADVERT COLUMN

Nayland and Wiston residents may place free adverts for items valued at under £50. Items £50 and over incur a charge of £5.

FOR SALE:

HIGHCHAIR

Lovely, well made and solid wooden highchair with adjustable tray. Converts into chair and table for older child. In very good condition. £35. Tel: 01206 262331

ELECTRIC GUITAR & AMP

Excellent condition Johnson electric guitar & Dean amp. Complete with case, storage stand & strap. Ideal for beginners/improvers. £75 may split. 01206 262994

BLACK BIN

Very sturdy, height 27", diameter 18", excellent condition, £8. Tel: 01206 262610 (Nayland Heights)

FREE:

BAGS OF SHREDDED PAPER

Available from Matthew Douglas, 4 Church Mews (opposite Post Office) between 9-5, or telephone 265904.

WANTED:

POSTAGE STAMPS for East Anglian Air Ambulance. Please leave them in box in the Post Office.

UNWANTED BICYCLES for Re-cycle Bicycles to Africa, www.re-cycle.org. Contact 01206 863111 email info@re-cycle.org or take them to the Re-Cycle Depot: Unit 2 Gunfleet Business Park, Brunel Way (off Wyncolls Rd), Colchester CO4 9QX

BATTERY RECYCLING – box in the Post Office.

Spingold
GRAPHICS
DESIGN, PRINT, DISPLAY

The Studio | Harpers Hill | Nayland
Colchester | Essex | CO6 4NT

Stuck for present ideas this Christmas?

10% off

all Christmas orders placed
before 21st October



Calendars

Christmas Cards

Canvas Wraps

Playing Cards

www.spingold.co.uk

01206 262751

ST. JAMES' CHURCH HALL HIRE CHARGES

Monday – Friday (Hourly Rates)	£4.00
MINIMUM CHARGE (2 hours)	£8.00
Weekends (Hourly Rates)	£5.00
MINIMUM CHARGE (2 hours)	£10.00

During Winter: Heating Vouchers @ £1 each

Bookings: online at www.naylandandwiston.net
or Andrew Gowen 262534 parkersag@yahoo.co.uk
Collect Key from 43 Bear Street

NAYLAND VILLAGE HALL HIRE CHARGES

Inc: Hall, Stage, Kitchen & Bar - Changing Rooms: £10 extra per session
Licence to provide Alcohol £20 extra - not always available

Sunday – Friday Hourly Rates	Residents	Non Residents
9am – 6pm (May-Sept)	£9.00	£12.50
9am-6pm (Oct-April)	£10.00	£14.50
6pm-midnight (May-Sept)	£10.00	£14.50
6pm-midnight (Oct-April)	£11.00	£16.50

MINIMUM HIRE: 2 HOURS RESIDENTS – 3 HOURS NON RESIDENTS

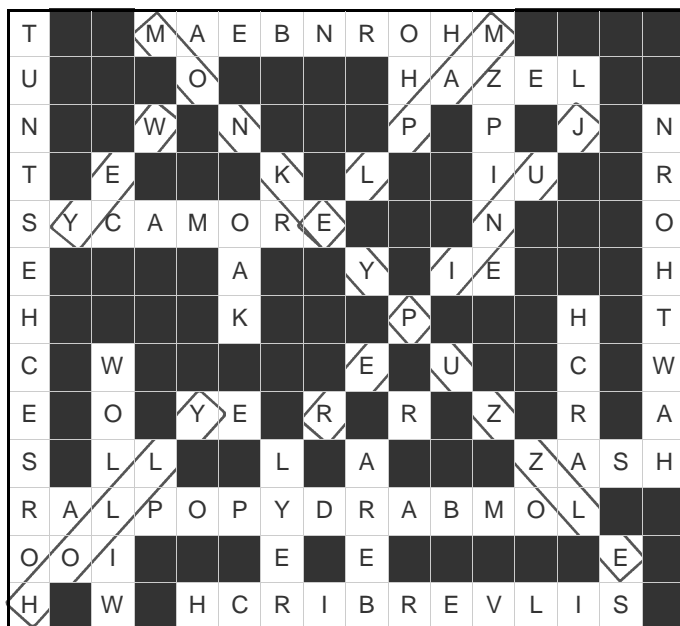
Saturday – Sessional rates on Saturday unless stated

Daytime until 6pm	Hourly Rates as above	
Evening 6pm-midnight	£130.00	£190.00
All day	£160.00	£240.00
All day with playing field	£185.00	£260.00
Playing Field only	£40.00	£40.00
Playing Field & Changing Rooms	£50.00	£50.00
Meeting Room only (3 hour session)	£12.00	£18.00

Reduced terms for use of the hall over a period can be negotiated
with the Treasurer, Andrew Gowen on 262534

Bookings: online at www.naylandandwiston.net
or Sara Strover Tel: 07748 953175

WORDSEARCH



ANAGRAM SOLUTION

1 Silver Birch, 2 Mulberry, 3 English Oak, 4 Black Poplar,
5 Judas Tree, 6 Pussy Willow, 7 Copper Beech,
8 Crab Apple, 9 Damson, 10 Sweet Chestnut, 11 Weeping
Willow, 12 Scots Pine



**CHEAPER
HEATING OIL
& COAL**

Together We Save
on
horkesleybuyers.com

Join us and start saving on your fuel

BUS TIMETABLES Service 84 (NS = Not Saturdays, Sch = Schooldays only, Sat/H = Sats & School Holidays, SchH = School Holidays only)

Sudbury – Newton Green – Assington – Leavenheath – Stoke by Nayland – Nayland – Gt Horkesley – General Hospital – Colchester

Monday to Saturday	NS	Sch	Sat/H							Sch	Sat/H	
Sudbury, Bus Station	0650	0705	0720	0850	0950	1050	1150	1250	1350	1420	1545	1735
Nayland, The Forge	0727	0739	0757	0927	1027	1127	1227	1327	1427	1457	1630	1812
Nayland, Doctors Surgery	0729	0742	0759	0929	1029	1129	1229	1329	1429	1459	1631	1814
Colchester General Hospital	0744	0944	1044	1144	1244	1344	1444	1514	1644	1829
Colchester Bus Station	0755	0815	0825	0955	1055	1155	1255	1355	1455	1525	1655	1840
Norman Way Schools	0825
Monday to Saturday	Sch/NS	Sch/NS	SchH/NS							Sat/H	Sch	Sat/H(Sch) *not Sch
Norman Way Schools	(1545)
Colchester Bus Station	0745	0755	0800	0845	0945	1045	1145	1245	1345	1510	1510	1610 *
Colchester Head Street	0748	0758	0803	0848	0948	1048	1148	1248	1348	1513	1513	1613
St Helena School	1520
Colchester General Hospital	0758	0813	0858	0958	1058	1158	1258	1358	1523	1533	1623
Nayland, Doctors Surgery	0811	0819	0826	0911	1011	1111	1211	1311	1411	1536	1546	1636
Nayland, The Forge	0812	0820	0912	1012	1112	1212	1312	1412	1537	1547	1637
Stoke by Nayland Mid Sch	0840	1600
Nayland, Doctors Surgery	1620
Sudbury, Bus Station	0850	0855	0915	0950	1050	1150	1250	1350	1450	1615	1655	1715

For more information: **Chambers Coaches**

Tel: 01787 – 227233

www.chamberscoaches.co.uk

Mobile Library
Post Office
Doctors Surgery

Parkers Way
Primary School
Home School Association
Nayland Playgroup
Woodland Corner
Primary School Choir
Nayland Toddler Group
Village Hall
Church Hall
Royal British Legion
Royal British Legion (Women's)
Womens Institute
Over 60's Club
Bowls Club
Nayland Art Club
Horticultural Society
Conservation Society
1st Scouts & Cubs
1st Nayland Brownies
1st Nayland Guides
Nayland Youth Club
Village Players
Nayland Choir
Transition Nayland
Friends of St. James Church
Friends of St. Mary's Church
Chambers Buses
Local Police
Police Safer Neighbourhood Team
Babergh District Council
District Councillor
Suffolk County Councillor

Saturdays alternating between: High Street 10am–11.15am, Parkers Way 3.30pm – 4.30pm
High Street Tel: 262210 Early Closing on Wednesday
93 Bear Street Tel: 262202 (*out of hours emergency 01206-578070*)
Surgery hours: Mon-Fri 8am-6pm (*telephone service until 6.30*) www.northhillsurgery.co.uk
Scheme Manager: Ellen Salmon, 15 Samford Close, Holbrook Tel 01473 328458
Head Teacher: Raegan Delaney Tel: 262348
Information on HSA not currently available
Manager: Sue Clarke 263054 <http://woodlandcornernayland.blogspot.com>
Administrator: Caroline Keep 263054 e-mail: enquiries_wc1@btconnect.com
Jayne Kennedy 263207
Elizabeth Huggins 263438 - Fridays 9.30-11.30am Village Hall
Bookings: Sara Strover 07748 953175 Caretaker: Mrs Y. Spooner 262691
Bookings: Andrew Gowen 262534
Hon Sec. Andrew Gowen 262534
Sec: Kath Hunt 262014 – 2nd Tuesday each month Church Hall 2.30pm
Sec: Mrs Jeannette Finch 262993 – 3rd Monday each month 7.30pm Village Hall
Sec: Barbara Smith 501942 President: Mrs Eva Rolfe 263151 - 2nd Thursday each month
Sec: Mrs Eva Rolfe 263151
Daphne Berry 262641 Liz Thorne 262664 - Wednesdays 2-4pm (*term times*)
Sec: Lorraine Brooks 262807 Chair: Trevor Smy 262022
Hon Sec Andora Carver 262970 Chair: Mr. J Alexander 262676
Mr M Macbeth 01473 827239 – Thursdays 7pm
Julie Mansfield 01787 211554 Tuesdays 5.30-7pm
Julie Mansfield 01787 211554 Tuesdays 7.30-9pm
Leader: Adam White 07540740259 Tuesdays 7-9pm Sec: Kate Bunting
Chair: Gale Scott 262061 Membership Sec: Emma Wallis 271366
Sec: Cathy Allen cathyallen@talktalk.net Chair: Ian McKay 242223 dougiemckay@btopenworld.com
Will Hitchcock 263169 - info@transitionnayland.co.uk - www.transitionnayland.co.uk
Chair: Alan Edwards 262800
Sec: Val Hopkins 263580 Chair: Bill Starling 262397
Tel: 01787 227233 www.chamberscoaches.co.uk
Hadleigh Tel: 101 *this is the new (non-emergency) number*
Babergh East SNT Tel: 01473 383115 email: babergheast.snt@suffolk.pnn.police.uk
Tel: 01473 822801 (Main Switchboard) Corks Lane, Hadleigh, IP7 6SJ www.babergh.gov.uk
Richard Cave richardcave@talktalk.net 262146
James Finch James.Finch@suffolk.gov.uk 263649 Rose Cottage, 5 Fen Street CO6 4HT

PARISH COUNCIL	COMMUNITY COUNCIL	VILLAGE HALL COMMITTEE
<p>Clerk: Debbie Hattrell 01787 880935 email: pc@naylandwithwissington.suffolk.gov.uk - by post: Charis, Upsher Green, Gt Waldingfield, CO10 0TT</p> <p>Chairman Gerald Battye Vice Chairman Mary George Councillors: Patricia Fuller, Rosemary Knox, Tom Gardiner, Matthew Pescott Frost, Will Hitchcock, Hector Bunting Parish Recorder Wendy Sparrow Tree Warden Terry Bannister Footpath Warden Sally Bartrum <i>Meetings: 7.30pm second Wednesday of month in the Village Hall Committee Room</i></p>	<p>Chairman Alex Badman 262994 Secretary Lorraine Brooks President Ken Willingale Vice-President Bryan Smith Vice-Chairman Jenny Smith Treasurer Bryan Smith Community Times Lorraine Brooks Executive: Tricia Hall, Hazel Gardiner, Colin Ramsell, Vicki Sargent, Iain Wright, Karen Elliott Individual: Claire Buller <i>Meetings: 12 November, 9 Jan 2013, AGM 5 March 8pm (Exec 7.30) Church Hall</i></p>	<p>Chairman: Mr Iain Wright 263657 Treasurer Andrew Gowen Secretary Chris Thompson Bookings Sec. Sara Strover</p> <p>Committee: Rosemary Knox, Nick Moriarty, Mike Hunter, Maria Mason</p> <p><i>Meetings: 7.30pm first Monday every month (except Bank Holidays: second Monday)</i></p>
CHURCH	<p>St James Choir: James Finch 262993 Bell Ringers Tower Captain: Chris Hunt 262014 Church Wardens St James: James Carver 262970 carversnayland@tiscali.co.uk or Kathy Hunt 262014 St Mary's: Nicola Thorogood 262453 nicola_thorogood@hotmail.com or Gerald Knox 262224 Deanery Synod Reps St James: Alex Murrison 262369, James Carver 262970 St Mary's: Rosemary Knox 262224, John Branfield 845107</p>	<p>Parochial Church Council St James Lay Chairman: John Baker, Treasurer: James Carver 262970, Secretary: James Finch 262993 Rose Cott, 5 Fen Street CO6 4HT james@jfassocs.co.uk, Minutes Sec: John Branfield Roy Evans, Chris Hunt, Rod Pawsey St Mary's Treasurer: Gerald Knox 262224, Secretary: Suki Cohen 262219, John Branfield, Tom Gibbons, Fiona Storey George Storey</p>

COMMUNITY WEBSITE - www.naylandandwiston.net

Webmaster: Graham W Griffiths – Tel: 262132 - e-mail: webmaster@naylandandwiston.net

VILLAGE DIARY

October	
1st	Village Hall Management Committee Meeting 7.30pm Village Hall <i>page 39</i>
3rd	RBL: outing to 390 th Bomber & British Resistance Museums <i>page 20</i>
5th	Coffee Morning 10.30am in St James for those interested in Flower Arranging <i>page 10 & 35</i>
5th	Nayland Village Quiz 7.30pm sharp Village Hall <i>page 6</i>
5th-7th	Conservation Society - Managing a Masterpiece: Test pit excavations, display on 7th <i>page 12 & 22</i>
6th	Village Hall Garden Autumn Working Party 9am <i>page 18 & 20</i>
6th	Nayland Firefighters Car Wash from 10am until approx 4pm <i>page 26</i>
9th	Conservation Society: David Cawdell <i>'The Lost Bands of Suffolk'</i> 7.40 for 8pm Village Hall <i>page 11 & 22</i>
10th	Parish Council Meeting 7.30pm Village Hall Committee Room <i>page 39</i>
12th	Harvest Supper: 7pm for 7.30 Village Hall <i>page 13 & 35</i>
13th	JAMboree 10am-12 noon Carver's Barn <i>page 18 & 23</i>
13th	Fairtrade Coffee Morning 10am-12 noon Church Hall <i>page 18 & 35</i>
14th	Harvest Festival at St James' Church at 9.30am <i>page 34</i>
14th	Country Music Club: <i>'Spur'</i> 7.30pm Village Hall <i>page 13</i>
15th	Women's Institute: <i>'Owl Rescue'</i> K Myers <i>page 20</i>
16th	Hortsoc: <i>'The Amateur Glasshouse'</i> Matthew Tanton Brown 7.40 for 8pm Church Hall <i>page 12 & 21</i>
17th	Village Lunch <i>'The History of West Mersea Oysters & the Company Shed'</i> 11.45am Village Hall <i>page 12 & 23</i>
23rd	Luncheon Club for over 60s: 12 noon Church Hall <i>page 18 & 23</i>
26th	Village Cinema: <i>'Salmon Fishing in the Yemen'</i> 8pm doors open 7.30pm Village Hall <i>page 19 & 21</i>
27th	RBL Poppy Appeal: an event in the Church Hall 9am-12noon <i>page 11</i>
27th	St James Churchyard Autumn Working Party 9am <i>page 18</i>
29th	Royal British Legion: AGM speaker Air Commodore Bob Lightfoot 7.30 for 8pm Church Hall <i>page 20</i>
31st	Philomel ensemble: <i>Awake! Awake! O England!</i> 7.30pm St James Church <i>page 36</i>
November	
4th	Nayland Choir: <i>In Paradisum</i> Fauré's Requiem 7pm in St James' Church <i>page 11 & 24</i>
5th	Bonfire & Fireworks 6.45 for 7pm Village Hall Playing Field <i>page 7 & 9</i>
9th	Nayland Choir: Fun Quiz 8pm Village Hall <i>page 12 & 24</i>
12th	Village Hall Management Committee Meeting 7.30pm Village Hall <i>page 39</i>
12th	Community Council Meeting 8pm Church Hall (Exec 7.30) <i>page 8 & 39</i>
13th	<i>Trees and the Stour Valley</i> Neil Catchpole - Conservation & Horticultural Society <i>page 13 & 22</i>
14th	Parish Council Meeting 7.30pm Village Hall Committee Room <i>page 39</i>
17th	Fundraising Committee: <i>A Night At The Races</i> Village Hall first race 7.30pm prompt <i>page 11 & 23</i>
18th	Country Music Club: <i>'Spur'</i> 7.30pm Village Hall <i>page 13</i>
19th	Women's Institute: AGM followed by <i>'Body Language'</i> Irvine George <i>page 20</i>
23rd	Village Cinema: <i>'Tinker Tailor Soldier Spy'</i> 8pm doors open 7.30pm Village Hall <i>page 19 & 24</i>
27th	Luncheon Club for over 60s: 12 noon Church Hall <i>page 18 & 23</i>
30th	Village Players: Fire & Ice 7.30pm Village Hall <i>page 9 & 25</i>
December	
1st	Village Players: Fire & Ice, 7.30pm Village Hall, Saturday matinee 2.30pm <i>page 9 & 25</i>
2nd	Nayland Christmas Family Fayre 12noon-2pm Village Hall <i>page 7 & 10</i>
7th & 8th	Village Players: Fire & Ice, 7.30pm Village Hall, Saturday matinee 2.30pm <i>page 9 & 25</i>
10th	Royal British Legion: Joint Christmas Party Church Hall <i>page 20</i>
11th	Luncheon Club for over 60s: Christmas Party Longwood Barn <i>page 18 & 23</i>
18th	Carols with the residents of Nayland House 7.30pm – all welcome
19th	Carols around the Christmas Tree 7.30pm High Street <i>page 33</i>
23rd	Candlelit Carol Service 6.30pm S James' Church <i>page 23 & 33</i>

Thank you for your contributions – if you have any ideas or suggestions please contact the Editor

DEADLINE FOR RECEIPT OF COPY IN THE DECEMBER ISSUE IS 5PM ON:

20TH NOVEMBER

CONTACT	ADVERTISING COSTS		
The Editor: Lorraine Brooks Tel: 262807 E-mail: naylandcc@yahoo.co.uk	Six issues for the Price of Five – get one advert FREE		
Copy can be posted in the Community Times Box in Nayland Post Office	Size	Dimensions	Cost
<u>PLEASE NOTE:</u> to ensure contributions can be accommodated in the space available it is advisable that space for promotion or large articles is reserved with the editor.	1/16 page portrait	6.3cm H x 4.4cm W	£5
	1/8 page landscape	6.3cm H x 9cm W	£10
	1/4 page portrait	13cm H x 9cm W	£15
	1/4 page landscape	6.2cm H x 18.4cm W	£15
	* 1/2 page landscape	13cm H x 18.4cm W	£30
* subject to space, not available yearly			

All monies raised from the Community Times go to good causes within the community. The Editor and Community Council may not be held responsible for the accuracy of articles or any other claims made by any advertiser in the Community Times.

The Editor and Community Council reserves the right to alter, shorten or refuse any items submitted for publication.

The Community Times is produced and distributed by the **Nayland-with-Wissington Community Council**

Registered Charity No.304926

The Community Times can also be viewed / downloaded from the Nayland Community Website: www.naylandandwiston.net